

**STANDARD LIGHTING LEGEND**

- M1** DIMMABLE (1) LED PAR 38 SINGLE HEAD RECESSED LIGHT FIXTURE.  
SPECIFICATION: CL-103-P38-NC-T  
(AVAILABLE EXCLUSIVELY BY: LUM RETAIL LIGHTING GROUP)
- M-3** DIMMABLE (3) LED PAR 38 MULTIPLE HEAD RECESSED LIGHT FIXTURE.  
SPECIFICATION: CL-105-P38-NC-T  
(AVAILABLE EXCLUSIVELY BY: LUM RETAIL LIGHTING GROUP)
- DIMMABLE LED PAR 38 RECESSED NEW CONSTRUCTION DOWN LIGHT.  
SPECIFICATION: CL-110-P38-NC-T  
(AVAILABLE EXCLUSIVELY BY: LUM RETAIL LIGHTING GROUP)
- ①** DIMMABLE DIRECTIONAL LED PAR 38 RECESSED NEW CONSTRUCTION DOWN LIGHT WITH NARROW SPOT.  
SPECIFICATION: CL-112-P38-NC-T  
(AVAILABLE EXCLUSIVELY BY: LUM RETAIL LIGHTING GROUP)
- LINE VOLTAGE MONORAIL TRACK LED TRACK LIGHTING.  
SPECIFICATION: CL-117-P20-PT  
(AVAILABLE EXCLUSIVELY BY: LUM RETAIL LIGHTING GROUP)

\*\*\*APPROVED DIMMER SWITCH\*\*\* = LUTRON CL DIGITAL DIMMER MAESTRO CL  
ONLY USE APPROVED DIMMERS WITH APPROVED FIXTURES. DO NOT MIX.

**STANDARD LIGHTING LEGEND**

- ADJUSTABLE UNDER CABINET LINEAR LED LIGHT FIXTURE.  
SPECIFICATION: CL-129-24  
(AVAILABLE EXCLUSIVELY BY: LUM RETAIL LIGHTING GROUP)

\*\*\*ONLY USE APPROVED DIMMERS WITH APPROVED FIXTURES\*\*\* DO NOT MIX.  
CONTACT LUM RETAIL LIGHTING GROUP FOR MORE DETAILS.

**ILLUMINATED DISPLAYS**

THESE DISPLAYS ARE DESIGNED TO PLUG DIRECTLY INTO A SWITCHED 20 AMP OUTLET. THEY CAN NOT BE DIMMED.

- LED** = LOW VOLTAGE LED LIGHTS.  
36 WATTS CONSUMED - @ 3 AMPS @ 120 VOLTS.

**DECOR LIGHTING LEGEND**

- XXXX PENDANT (XXXXXXX) LIGHT FIXTURE.  
SPECIFICATION: TBD  
(SUPPLIED BY: TBD)

\*\*\*APPROVED DIMMER SWITCH\*\*\*  
CONTACT DECORATIVE LIGHTING MANUFACTURER FOR APPROVED LIGHTING CONTROLS SPECS.

**PREMIUM LIGHTING LEGEND**

- 2'x2' DIMMABLE RECESSED LED DIRECT LIGHT FIXTURE.  
SPECIFICATION: ML-126  
(AVAILABLE EXCLUSIVELY BY: LUM RETAIL LIGHTING GROUP)
- 2'x4' DIMMABLE RECESSED LED DIRECT LIGHT FIXTURE.  
SPECIFICATION: ML-127  
(AVAILABLE EXCLUSIVELY BY: LUM RETAIL LIGHTING GROUP)

\*\*\*ONLY USE APPROVED DIMMERS WITH APPROVED FIXTURES\*\*\* DO NOT MIX.  
CONTACT LUM RETAIL LIGHTING GROUP FOR MORE DETAILS.

**EXAM ROOM LIGHTING PACKAGE**

- EI** (4) CL-110-P38-NC-T\_ROUND RECESSED DOWNLIGHT
- (1) CL-112-P38-NC-T\_ROUND ADJUSTABLE DOWNLIGHT
- (2) CL-155-T\_2 GANG SWITCH PLATE
- (1) CL-150-T\_WALL SWITCH ON/OFF
- (1) CL-151-T\_WALL DIMMER
- (1) CL-153-T\_ON/OFF WIRELESS REMOTE
- (1) CL-152-T\_DIMMER WIRELESS REMOTE
- (2) CL-154-T\_REMOTE ADAPTOR
- (1) CL-157-T\_ROOM SENSOR

**IMPORTANT NOTES:**

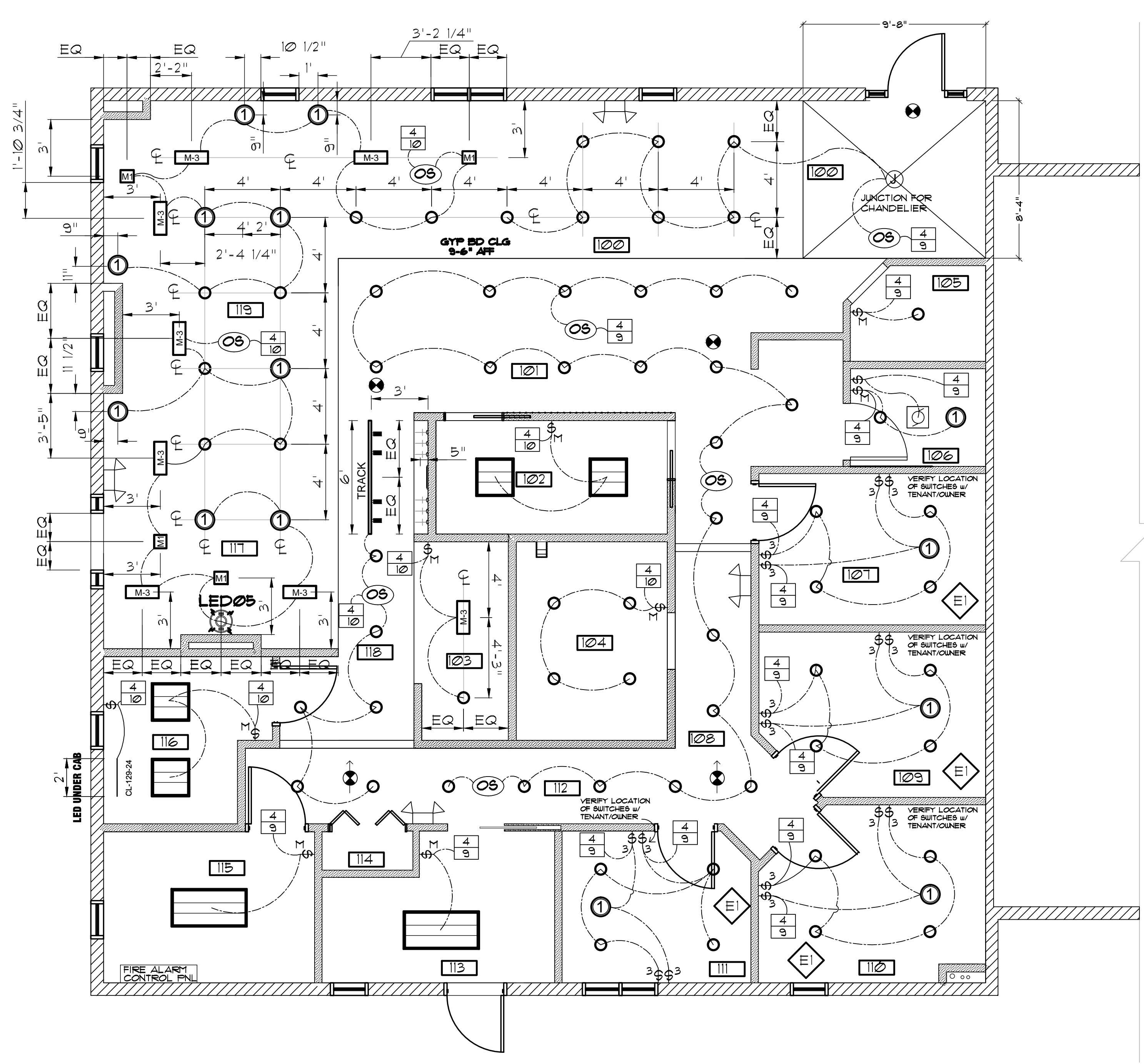
1) EYE DESIGNS ILLUMINATED DISPLAYS DO NOT HAVE ON/OFF SWITCHES, AND WILL NEED TO BE WIRED TO A SWITCH.

**LIGHTING LEGEND**

<b>J</b>	JUNCTION IN CEILING FOR FUTURE CHANDELIER WITH MAX. (5) 10W FLOOR BULB, TOTAL 50W
<b>□</b>	EXHAUST FAN - SEE MECH PLAN FOR SPECIFICATION
<b>OS</b>	CLG MTD OCCUPANCY SENSOR OCCUPANCY SENSORS AND MOTION SWITCHES SHOWN FOR THE BASIS FOR BIDDING. SUCCESSFUL CONTRACTOR SHALL SUBMIT SHOP DRAWINGS FOR SENSORS AND MOTION SWITCHES FROM MANUFACTURER USED. PRICE TO BE ADJUSTED AFTER SHOP DRAWING IS APPROVED BY THE ARCHITECT.
<b>\$M</b>	MIA-200 AUTOMATIC WALL SWITCH (TURNS LIGHTING ON/OFF BASED ON OCCUPANCY (UP TO 30 MINUTES) SENSOR RANGE 300')
<b>\$</b>	WALL SWITCH
<b>\$3</b>	3-WAY SWITCH
<b>⬇</b>	BATTERY PACK EMERGENCY HEAD FED FROM LIGHTING CIRCUIT IN AREA
<b>⊗</b>	EXIT SIGN WITH BATTERY BACKUP FED FROM LIGHTING CIRCUIT IN AREA
<b>—</b>	PANEL NO. CIRCUIT NO.

NOTE: SEE LIGHTING LEGEND FOR DIMMABLE FIXTURES THAT REQUIRED DIMMABLE SWITCHES

NOTE: CONTRACTOR CAN PROVIDE AN EQUAL LIGHTING PACKAGE



**LIGHTING PLAN**

SCALE: 1/4" = 1'-0"

2185 S.F.

LIGHTING POWER DENSITIES - EXAM ROOMS

- (63) RECESSED DOWN LIGHT FIXTURE, LED LIGHTS @ 20W = 1260W
- (15) RECESSED DIRECTIONAL DOWN LIGHT FIXTURE, LED LIGHTS @ 20W @ 300W
- (4) M-1 SINGLE HEAD RECESSED FIXTURE, LED LIGHTS @ 20W @ 80W
- (8) M-3 MULTI HEAD RECESSED FIXTURE, LED LIGHTS @ 60W (3 LIGHTS X 20W EACH) = 480W
- (1) CHANDELIER LED LIGHTS @ 100W @ 100W
- (4) 2'x2' DIMMABLE RECESSED LED DIRECT LIGHT FIXTURE @ 31.7W = 127W
- (2) 2'x4' DIMMABLE RECESSED LED DIRECT LIGHT FIXTURE @ 31.7W @ 64W
- (1) 2' LINEAR FIXTURE, LED LIGHT @ 35W @ 70W
- (1) LEDS, LOW VOLTAGE LED LIGHTS @ 36W @ 36W
- (6) MONORAIL TRACK LED LIGHTS @ 8W @ 48W

2502 WATTS DIVIDED BY 2185 SF = 1.1 (1.1 ALLOWED)



space planning and architecture

MB DESIGN ASSOCIATES, INC.  
FLORIDA LICENSE #: AA26000521  
P.O. Box 4376  
Tequesta, Florida 33469  
phone: (561) 222-2993  
email: tjmarist@aol.com

WILLIAM TRACY, #AR0014756

DATE:  
THE FOLLOWING CODES WERE USED IN THE DESIGN OF THIS PROJECT:  
2014 FLORIDA BUILDING CODE  
EXISTING BUILDING, BUILDING, PLUMBING, FUEL GAS, MECHANICAL, TEST PROTOCOLS FOR HIGH VELOCITY HURRICANE ZONES, ACCESSIBILITY AND ENERGY  
2011 NATIONAL ELECTRICAL CODE NFPA 70  
FLORIDA FIRE PREVENTION CODE, 5TH EDITION (INCLUDING NFPA 1, 2012 AND 101, 2012 EDITION) WITH FLORIDA AMENDMENTS

**PROJECT NAME/LOCATION:**

**ADVANCED VISION CARE**  
DR. AMIR CUKIERMAN, O.D.  
3893 MILITARY TRAIL  
SUITE #4  
ADMIRAL'S CROSSING  
JUPITER, FL

I (WE) HAVE REVIEWED THESE DRAWINGS, UNDERSTAND THE WORK OUTLINED THEREON, AND HEREBY APPROVE SAME FOR CONSTRUCTION.

BY:

DATE:

THESE DRAWINGS ARE BASED ON EXISTING DRAWINGS WHEN AVAILABLE. FIELD INSPECTION OF AS BUILT CONDITIONS AND OTHER INFORMATION FROM THE BUILDING OWNER, MAINTENANCE DEPARTMENT AND AS NOTED. INFORMATION WAS GATHERED WITHOUT "DESTRUCTIVE INVESTIGATION" CUTTING INTO EXISTING SURFACES TO REVEAL STRUCTURE, PIPING, DUCTWORK, ETC). CONTRACTORS AND SUBCONTRACTORS ARE TO BASE BIDS ON INFORMATION SHOWN. SHOULD CONSTRUCTION REVEAL THAT EXISTING CONDITIONS ARE NOT AS ANTICIPATED OR AS SHOWN ON THESE DRAWINGS THE CONTRACTOR AND/OR SUBCONTRACTORS WILL NOTIFY THE OWNER/TENANT OF THE DIFFERENCE AND THE PRICE WILL BE ADJUSTED UP OR DOWN TO REFLECT THE DISCREPANCY.

JOB #: DR CUKIERMAN  
DATE: 3/16/2016  
SCALE: VARIES  
DRAWN BY: JM

ISSUED:	REVISIONS:

SHEET NO:  
**E = 1**  
OF 2