

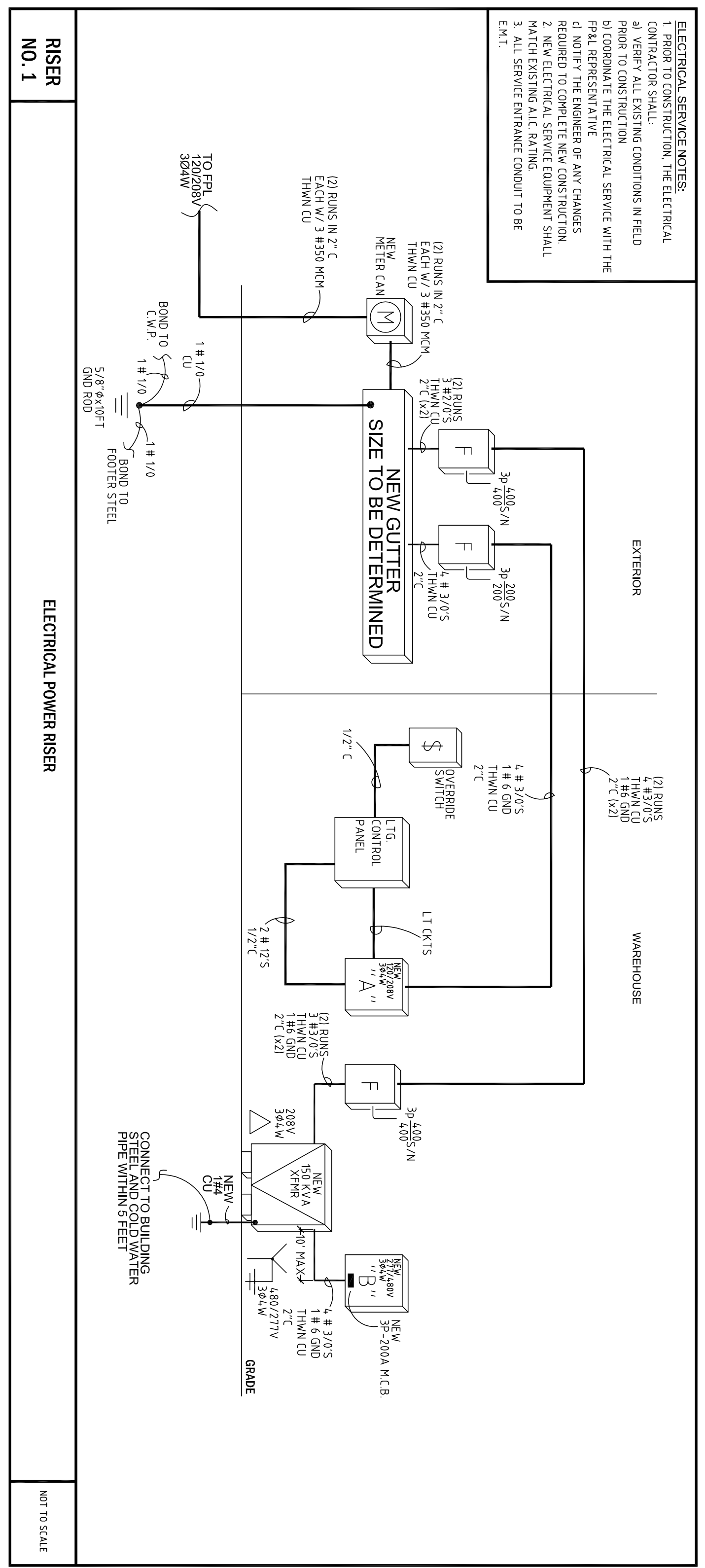
MFG. SERVICES OR EQUIV.		TYPE		LOAD CENTER		PANEL RATING		PANEL RATING		PANEL RATING	
VOLTS 277/480V 3Ø4W		PANEL "B" (FUTURE EQUIPMENT) ①		PANEL "A"		FOS 30		FOS 30		FOS 30	
A	B	C	LOAD	COND. SIZE	WIRE SIZE	POLE	AMPS	CKT.	BUS	CKT.	AMPS
-	-	-	FUTURE EQUIPMENT	-	-	-	-	1	4	2	-
-	-	-	FUTURE EQUIPMENT	-	-	-	-	3	4	4	-
-	-	-	FUTURE EQUIPMENT	-	-	-	-	5	7	6	-
-	-	-	FUTURE EQUIPMENT	-	-	-	-	7	8	8	-
-	-	-	FUTURE EQUIPMENT	-	-	-	-	9	10	10	-
-	-	-	FUTURE EQUIPMENT	-	-	-	-	11	11	12	-
-	-	-	FUTURE EQUIPMENT	-	-	-	-	13	14	14	-
-	-	-	FUTURE EQUIPMENT	-	-	-	-	15	16	16	-
-	-	-	FUTURE EQUIPMENT	-	-	-	-	17	18	18	-
-	-	-	FUTURE EQUIPMENT	-	-	-	-	19	20	20	-
-	-	-	FUTURE EQUIPMENT	-	-	-	-	21	22	22	-
-	-	-	FUTURE EQUIPMENT	-	-	-	-	23	24	24	-
-	-	-	FUTURE EQUIPMENT	-	-	-	-	25	26	26	-
-	-	-	FUTURE EQUIPMENT	-	-	-	-	27	28	28	-
-	-	-	FUTURE EQUIPMENT	-	-	-	-	29	30	30	-

REMARKS & KEY NOTES:
① PROVIDE NEW 3P-208A M.C.B.

ELECTRICAL A/C EQUIPMENT LEGEND									
UNIT NO.	PANEL FEED	V/PHZ	FEEDERS	CONDENSING UNIT	AIR HANDLER UNIT				
AHU-1 CU-1	"A"	AHU - 208/1/60	3 # 10'S THHN CU	C.B. (NEMA 3R)	C.B. (NEMA 1)				
AHU-2 CU-2	"A"	AHU - 208/1/60	3 # 10'S THHN CU	C.B. (NEMA 3R)	C.B. (NEMA 1)				
AHU-3 CU-3	"A"	AHU - 208/1/60	3 # 10'S THHN CU	C.B. (NEMA 3R)	C.B. (NEMA 1)				

MFG. SERVICES OR EQUIV.		TYPE		LOAD CENTER		PANEL RATING		PANEL RATING		PANEL RATING	
VOLTS 120/208V 3Ø4W		PANEL "A"		PANEL "A"		FOS 42		FOS 42		FOS 42	
A	B	C	LOAD	COND. SIZE	WIRE SIZE	POLE	AMPS	CKT.	BUS	CKT.	AMPS
0.9	-	-	WAREHOUSE RECEIPT	1/2"	1	20	1	1	2	20	1
1.2	-	-	GAZARIE DOOR OPERATOR	1/2"	1	20	3	4	20	1	12
2.4	-	-	BATHROOM (OPTIONAL)	1/2"	1	20	5	6	20	1	12
1.2	-	-	INSTA. HOT (OPTIONAL)	1/2"	1	20	7	8	20	1	12
1.4	-	-	WAREHOUSE LIGHTING	1/2"	1	20	9	10	20	1	12
0.5	-	-	WAREHOUSE LIGHTING	1/2"	1	20	11	12	20	1	12
-	-	-	WAREHOUSE LIGHTING	1/2"	1	20	13	14	20	1	12
-	-	-	WAREHOUSE LIGHTING	1/2"	1	20	15	16	20	1	12
5.0	-	-	SPACE	1/2"	2	40	17	18	20	1	12
5.0	-	-	SPACE	1/2"	2	40	19	20	20	1	12
5.0	-	-	SPACE	1/2"	2	40	21	22	20	1	12
5.0	-	-	SPACE	1/2"	2	40	23	24	20	1	12
5.0	-	-	SPACE	1/2"	2	40	25	26	20	1	12
5.0	-	-	SPACE	1/2"	2	40	27	28	20	1	12
0.4	-	-	LITG PANEL	1/2"	1	20	29	30	20	1	12
-	-	-	SPACE	-	-	-	31	32	20	1	12
-	-	-	SPACE	-	-	-	33	34	20	1	12
-	-	-	SPACE	-	-	-	35	36	20	1	12
-	-	-	SPACE	-	-	-	37	38	20	1	12
-	-	-	SPACE	-	-	-	39	40	20	1	12
-	-	-	SPACE	-	-	-	41	42	20	1	12

REMARKS & KEY NOTES:
① MAIN LUGS ONLY.
② LIGHTING CONTROL PANEL TO COMPLY WITH FLORIDA BUILDING CODE 2008 SECTION 507.2
③ NON-INCENDIANT LOADS PROVIDE "HAR" RATED BREAKERS



- ### ELECTRICAL SPECIFICATIONS
- DO NOT SCALE THE ELECTRICAL DRAWING. REFER TO THE ARCHITECTURAL PLAN AND ELEVATIONS FOR EXACT LOCATION OF ALL EQUIPMENT AND CONDUIT WITH OWNERS REPRESENTATIVES.
 - ALL WORK SHALL BE DONE IN ACCORDANCE WITH 2010 CIP 271 AND NEC 2008 AND GOVERNING MUNICIPAL, STATE AND LOCAL CODES. ALL MATERIAL SHALL BE NEW AND SHALL BEAR THE U.L. LABEL WHERE APPLICABLE.
 - UNLESS OTHERWISE NOTED, ALL CONDUITORS SHALL BE COPPER, WITH "THHN" INSULATION. FOR SIZE #10 AND SMALLER, CONDUITORS LARGER THAN #10 SHALL HAVE "THWN" INSULATION. ALL CONDUITORS #10 AND SMALLER MAY BE SOLID. ALL CONDUITORS #8 AND LARGER SHALL BE STRANDED. ALL CONDUITORS MUST COMPLY WITH ARTICLE 310 OF THE 2008 NEC.
 - OUTLET BOXES SHALL BE PRESSED STEEL IN DRY LOCATIONS, CAST ALLOY WITH THREADED HOLES IN WET LOCATIONS AND SPECIAL ENCLOSURES FOR OTHER CLASSIFIED AREAS.
 - DISCONNECT SWITCHES SHALL BE HP RATED HEAVY DUTY, QUICK MAKE QUICK BREAK, WITH ENCLOSURES AS REQUIRED BY EXPOSURE. MOTOR STARTERS SHALL BE INCULDED FOR ALL MOTORS EXCEEDING 1HP.
 - THESE PLANS DO NOT SHOW EVERY MINOR DETAIL OF CONSTRUCTION. THE CONTRACTOR IS EXPECTED TO FURNISH AND INSTALL ALL ITEMS FOR WHICH NO DETAIL IS SHOWN. THE CONTRACTOR SHALL BE RESPONSIBLE FOR OBTAINING ALL NECESSARY PERMITS AND APPROVALS FROM THE LOCAL JURISDICTION.
 - THE ELECTRICAL SYSTEM SHALL BE COMPLETELY AND EFFECTIVELY GROUND AS REQUIRED IN ARTICLE 250, NATIONAL ELECTRICAL CODE.
 - ALL MATERIALS SHALL BE NEW AND SHALL BEAR U.L. LABELS WHERE APPLICABLE.
 - ALL WORK SHALL BE PERFORMED BY A LICENSED ELECTRICAL CONTRACTOR IN A FIRST CLASS WORKMANSHIP PATTERN. THE COMPLETE SYSTEM SHALL BE FULLY OPERATIONAL AND ACCEPTANCE BY ENGINEER/ARCHITECT MUST BE A CONDITION OF THE SUBCONTRACTOR.
 - THE ELECTRICAL INSTALLATION SHALL MEET ALL STANDARD REQUIREMENTS OF POWER, LIGHT COMPANY AND TELEPHONE COMPANY. MOTORS OVER 1HP TO HAVE STARTERS AND BREAKERS.
 - CIRCUITS SHOWN ON PLANS ARE TO DETERMINE LOAD DATA AND PANEL SIZE. THE CONTRACTOR SHALL PROVIDE CIRCUITS TO SUIT JOB CONDITIONS.
 - SEE NOTES ON PLANS FOR OTHER REQUIREMENTS.
 - FURNISH AND INSTALL LIGHTING FIXTURES AND LAMPS AS CALLED FOR ON PLANS, OR AS SELECTED BY OWNER.
 - ALL WORK SHALL BE COORDINATED WITH OTHER TRADES TO AVOID INTERFERENCE WITH THE PROCESS OF CONSTRUCTION.
 - CORRECTION OF ANY DEFECTS SHALL BE COMPLETED WITHOUT ADDITIONAL CHARGE AND MAY BE DAWKED.
 - ALL REQUIRED INSURANCE SHALL BE PROVIDED FOR PROTECTION AGAINST PUBLIC LIABILITY OF PROPERTY DAMAGE FOR THE DURATION OF THE WORK.
 - CHECK ALL EQUIPMENT FOR PROPER VOLTAGE, PHASE, AND CURRENT BEFORE CONNECTION TO CIRCUITS.
 - ELECTRICAL CONTRACTOR SHALL CHECK AND VERIFY EQUIPMENT FURNISHED AGAINST THOSE SPECIFIED OR INTENDED AND REVERSE BRANCH CIRCUITS AS MAY BE REQUIRED WITH PRIOR APPROVAL OF ENGINEER/ARCHITECT.
 - MECHANICAL CONTRACTOR SHALL PROVIDE MOTOR STARTERS FOR ALL AIR CONDITIONING EQUIPMENT PER MANUFACTURERS SPECIFICATIONS.
 - AIR CONDITIONING EQUIPMENT INCLUDES CONDENSER, COMPRESSOR AND FAN, FAN COIL UNIT'S, ELECTRICAL STRIP HEATER, THERMOSTAT, ETC.

ELECTRICAL PANELS, RISER, & SPECS

NOT TO SCALE

FORMICAE ASSOCIATES, Inc.
Consulting Engineers

3600 N.W. Boca Raton Blvd.
Suite #711
Boca Raton, FL 33431

TEL: (561) 366-3611 FAX: (561) 366-4733
Robert F. Formica, P.E., License #19733
Email: bob@formicaengineering.com