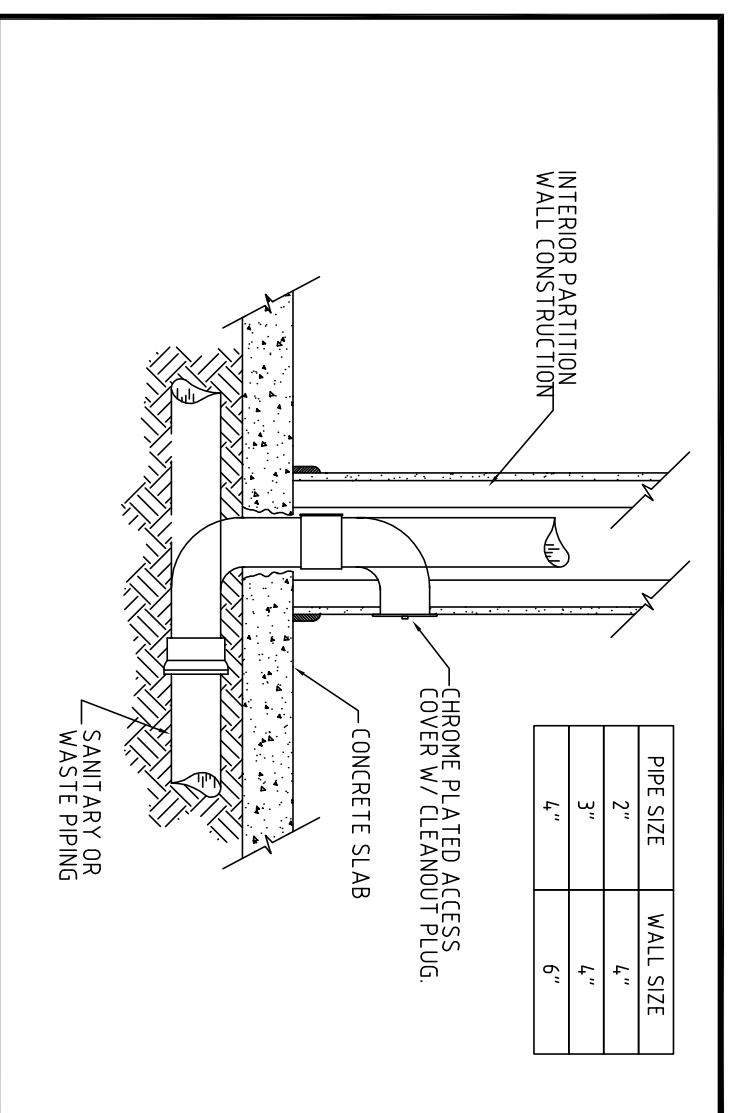
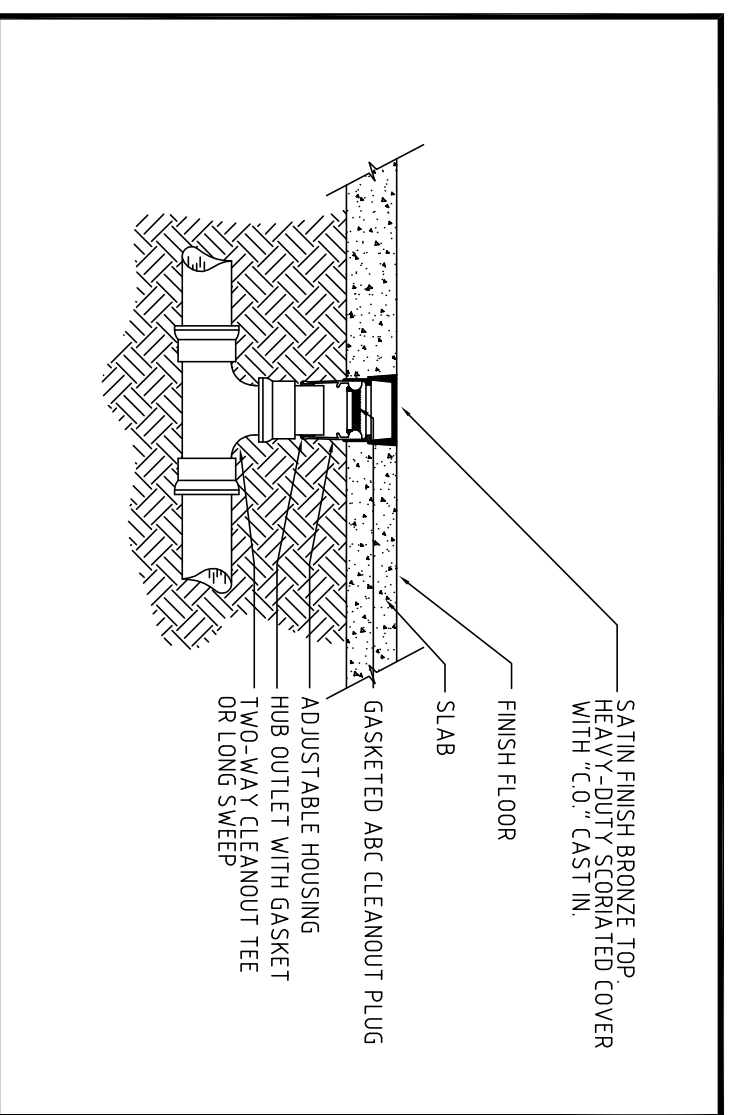


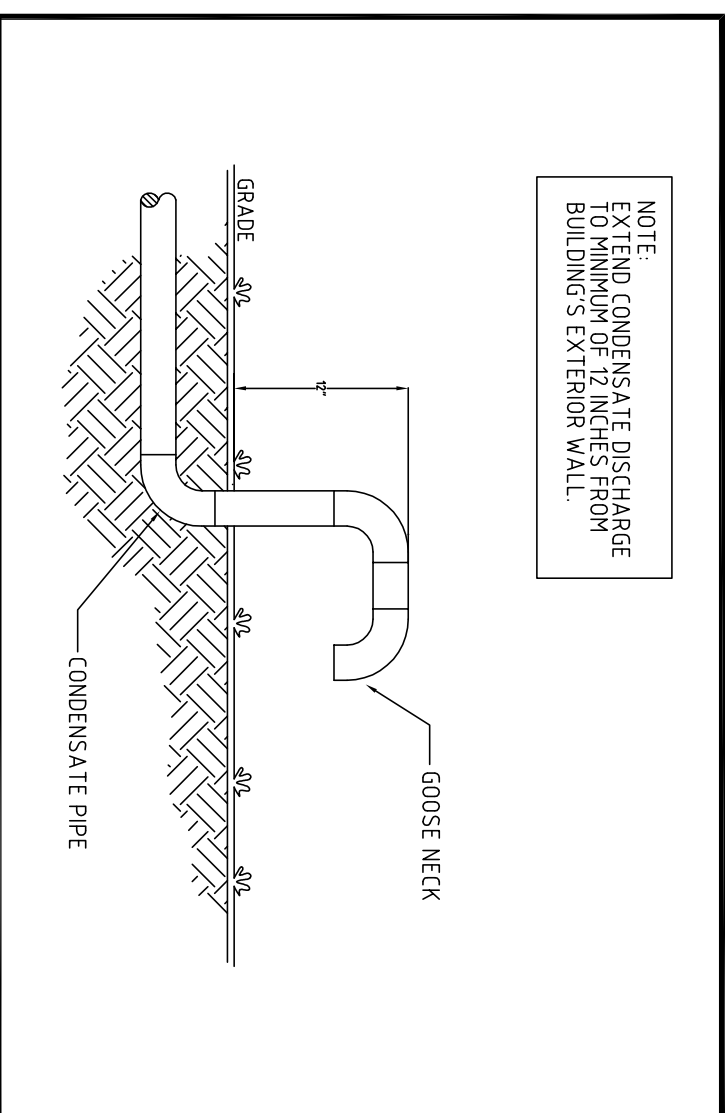
DETAIL NO. 1 PIPE SUPPORT NOT TO SCALE



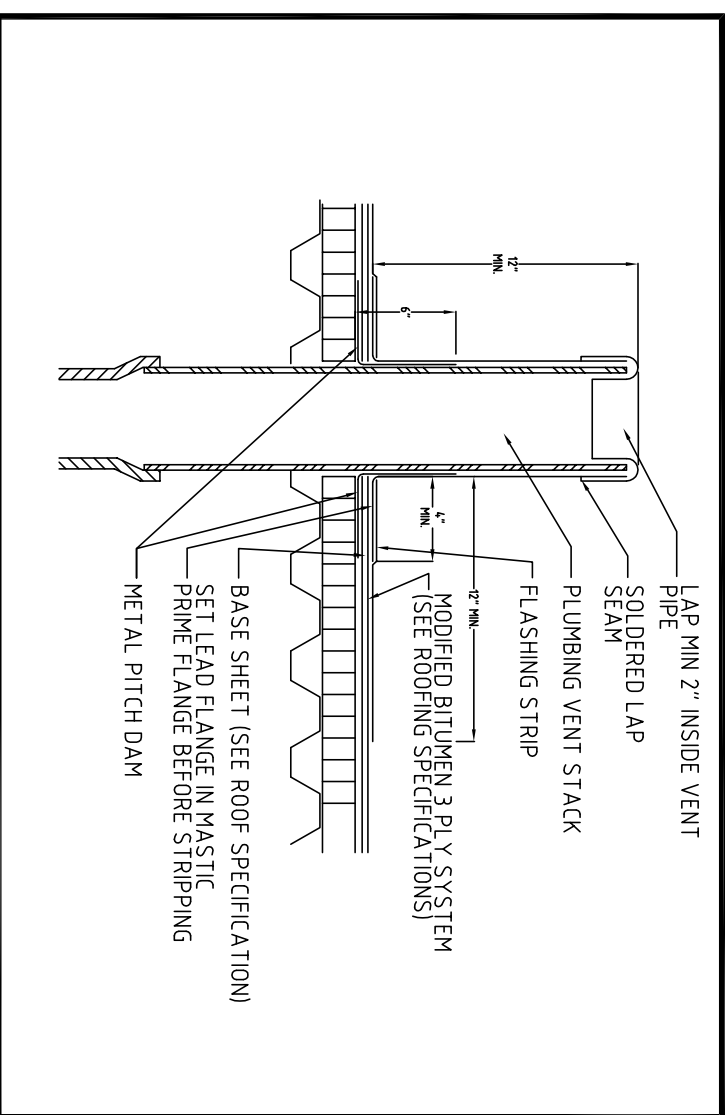
DETAIL NO. 2 WALL CLEAN-OUT NOT TO SCALE



DETAIL NO. 3 FLOOR CLEAN-OUT (FCO) NOT TO SCALE



DETAIL NO. 4 CONDENSATE DISCHARGE NOT TO SCALE



DETAIL NO. 6 VENT THROUGH ROOF NOT TO SCALE

PROJECT: STS INKS

SANITARY SIZING

FIXTURE TYPE	NO.	FLU/EGH	TOTAL	MIN. TRAP SIZE
LAVATORY	1	4.0	4.0	3"
LAVATORY	1	1.0	1.0	1 1/4"
NOF SINK	1	2.0	2.0	1 1/2"
TOTAL	9	-	19.0	-

TOTAL SANITARY FIXTURE UNITS: 19.0

MINIMUM SIZE SANITARY LINE @ 1/8" SLOPE: 3"

HOT & COLD WATER SIZING

FIXTURE TYPE	NO.	CMF/UEA	TOTAL	HW/FLUEA	TOTAL
WATER CLOSET	1	5.0	5.0	15	15
LAVATORY	1	1.5	1.5	2.25	2.25
NOF SINK	1	2.25	2.25	2.25	2.25
HOSE BIBB	4	3.0	12.0	-	-
TOTAL	5	-	20.75	-	3.75

TOTAL C.M.F.U. = 120.75 + 20.75 = 141.5

MINIMUM SIZE WATER SERVICE: 1"

MINIMUM SIZE WATER METER: 1"

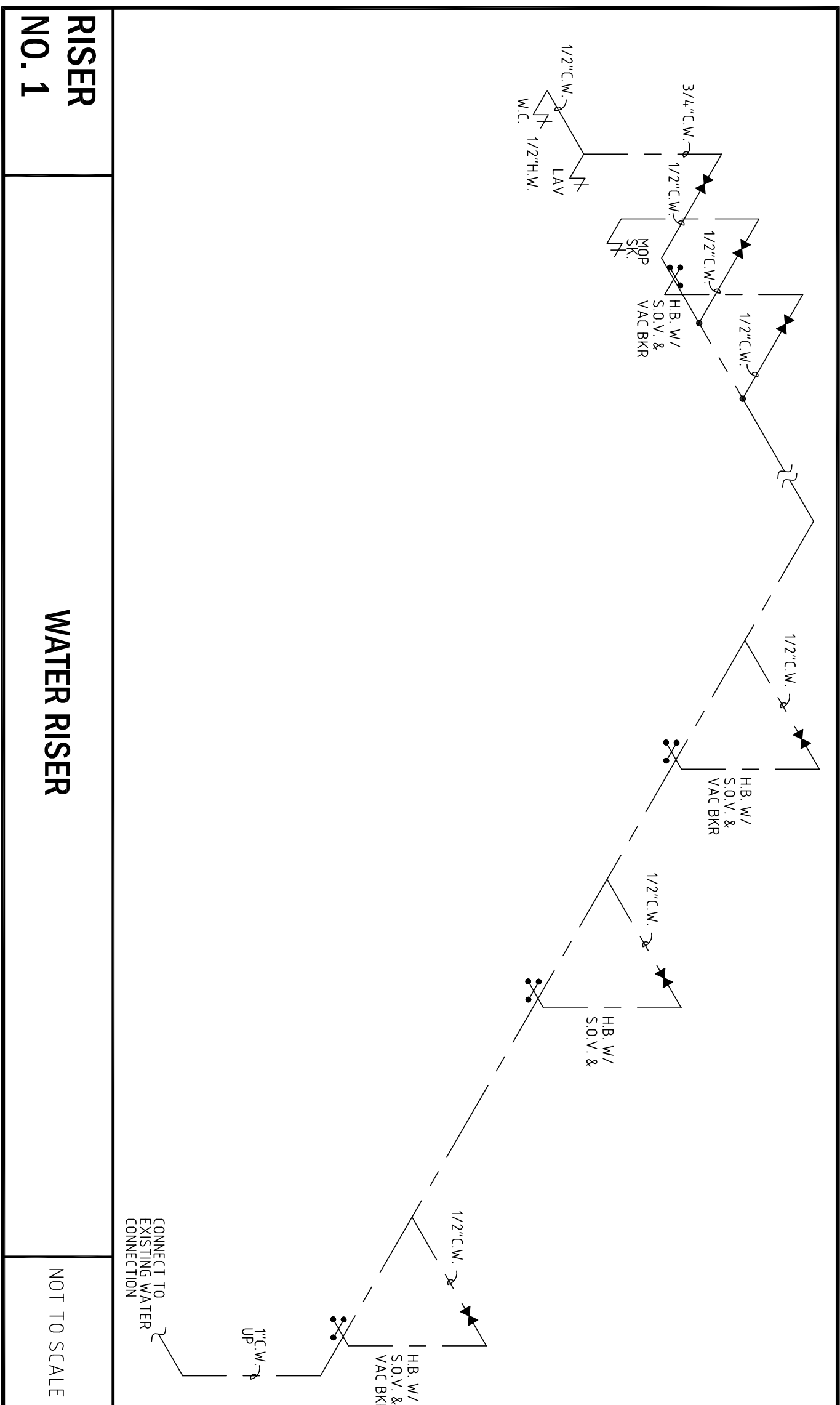
PLUMBING FIXTURES

- WATER CLOSET (HANDICAP) 10
- LAVATORY (HANDICAP) 10
- NOF SINK

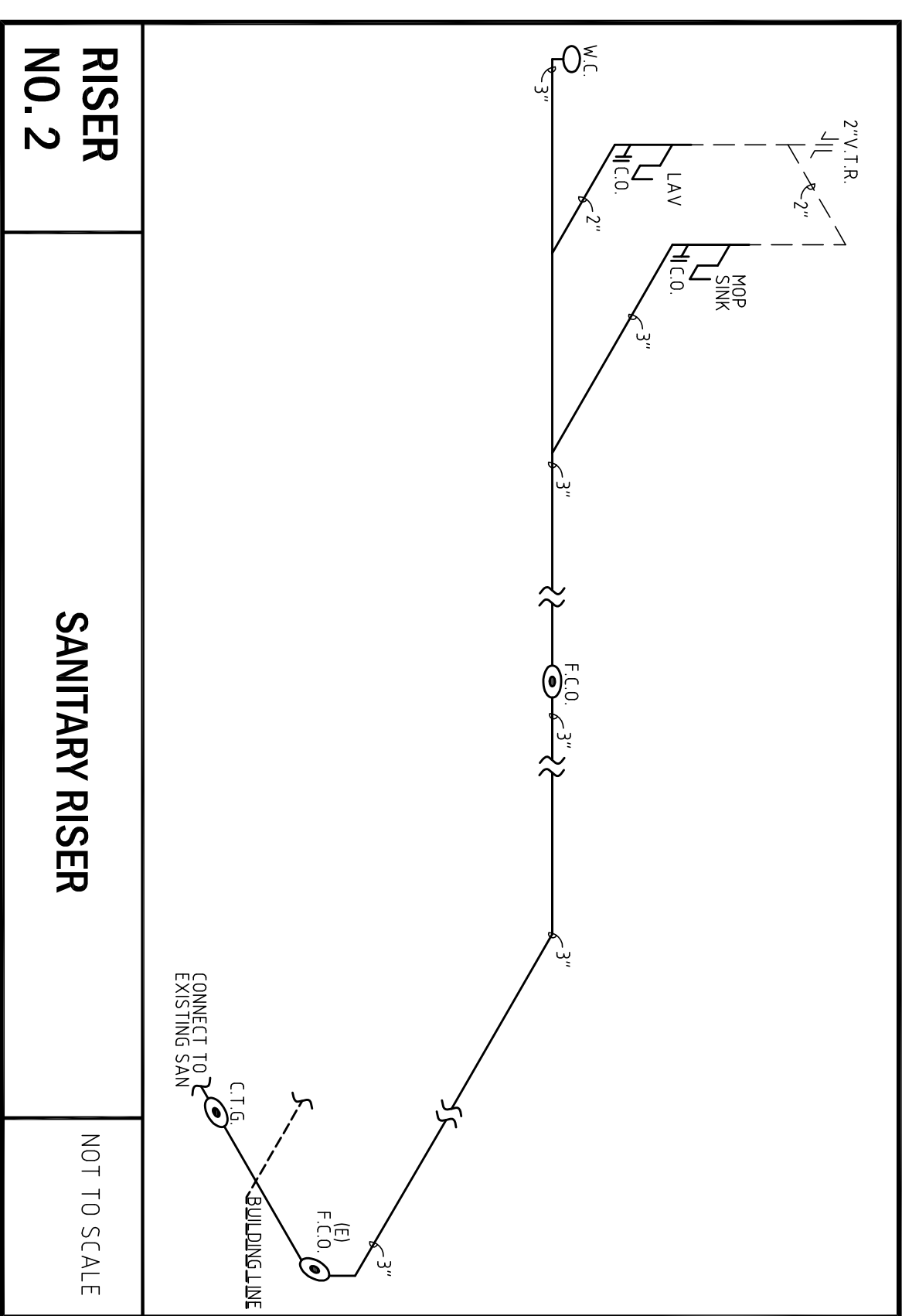
AMERICAN STANDARD "LEGNE" MODEL # 855507 COLOR WHITE "PAUCET" MODEL # 855510

AMERICAN STANDARD "LEGNE" MODEL # 855508 PAUCET SET #8340234 P-TRAP MODEL #7798175

1. MOUNTING HEIGHT PER ADA'S STANDARD INSULATE WATER AND DRAIN LINE
2. PROVIDE COUPLERS FOR ALL JOINTS WITH INSULATED JOINTS
3. PROVIDE COUPLERS FOR ALL JOINTS WITH INSULATED JOINTS
4. ALL WALL HUNG PLUMBING FIXTURES SHALL COMPLY WITH F.B.C. 2505.5.11, 2505.5.12 AND 2505.5.13



RISER NO. 1 WATER RISER NOT TO SCALE



RISER NO. 2 SANITARY RISER NOT TO SCALE

PLUMBING DATA, DETAILS, & RISERS
NOT TO SCALE

FORMICAE ASSOCIATES, Inc.
Consulting Engineers

3900 N.W. Boca Raton Blvd.
Suite #711
Boca Raton, FL 33431
TEL: (561) 368-3611 FAX: (561) 368-4733
Robert F. Formica, P.E., License #19733
Email: bob@formicaengineers.com

DATE: 03/11/15
SCALE: AS NOTED
CHECKED: RFF
APPROVED: RFF
DRAWN: -

NOTE: ANY DESIGN CHANGES TO THE SYSTEM COVERED BY THESE PLANS SHALL BE THE RESPONSIBILITY OF THE ENGINEER WHO PREPARED THESE PLANS. WILL NOT BE VALID UNLESS THEY ARE REVISIONS TO THE ORIGINAL DESIGN. ALL REVISIONS TO THESE PLANS SHALL BE THE RESPONSIBILITY OF THE COMPANY WHICH APPROVED THESE CHANGES. FINAL BID TO INCLUDE PERMIT COMMENTS.

TO THE BEST OF MY KNOWLEDGE, THE PLANS AND SPECIFICATIONS COMPLY WITH THE APPLICABLE REGULATORY REQUIREMENTS AND I AM NOT PROVIDING ANY WARRANTIES AS TO THE ACCURACY OF THE LOCAL AUTHORITY IN ACCORDANCE WITH THIS SECTION AND 633 F.L.A.S. STATUTES.

Architectural Seal