

Foundation Notes:

1. Provide concrete curb under masonry wall to provide a level base for cmu in accordance with ACI 530.1. If curb height exceeds 3", provide (2) #4 @ cont. All vertical reinforcing shall be set in footing and be continuous thru curb.
2. 'Chairs' are required for w.w.f. in concrete slab per: FBC.
3. Side forms shall be used in all footing unless soil is stable to maintain vertical integrity during construction.
4. Double w.w.f. 60" (5'-0") at perimeter of concrete slab.

Foundation Notes:

1. Indicates 8" reinforced masonry walls. Contractor shall reinforce walls with #5 vertical reinforcing bars in grouted cells at ends, corners, intersections and at 32" c/c maximum spacing. The location of reinforced cells at ends and corners only is shown on plan.
2. Indicates 8" stemwall under window openings. The top of the stemwall bottom of window opening shall be a minimum concrete cap reinforced with 2#4 horizontal; extend these bars into columns/filled cells at ends. For openings wider than 6'-6", the contractor shall provide #5 vertical reinforcing bars under openings @ 24" c/c maximum spacing in grouted cells.
3. Slab on grade contraction joints shall be tooled or sawcut (within 6 hours of pouring). Joint pattern shall be approximately square with no dimension exceeding 20'-0" in any direction and shall intersect at all re-entrant corners.
4. All steel members to be hot dipped galvanized (prior to welding). Field touch up welds and scratches with zinc-rich paint.
5. Refer to sheet A10 for structural notes.
6. Provide Isolation Joints (Exp.) at all exterior slabs against concrete block, min. of 1/2" felt paper.

Column Schedule:

MARK	TYPE	REINFORCING	CLOSED # 3 TIES
C1	Filled Cell Cell in 8' x 16' x 8' Block @ 48" OC.	1#5 Ø VERTICAL (see foundation notes for spacing)	
C2	Filled Cell in 8' x 16' x 8" Block per plan	2#5 Ø VERTICAL	Use 2#6Ø in lieu of 2#5Ø
C3	Poured Concrete	6#5 Ø VERTICAL	#3 Ø 12" o.c.
C4	T.S. 3 1/2" x 3 1/2" x 3/8"	ASTM 500 TYPICAL GRADE B	

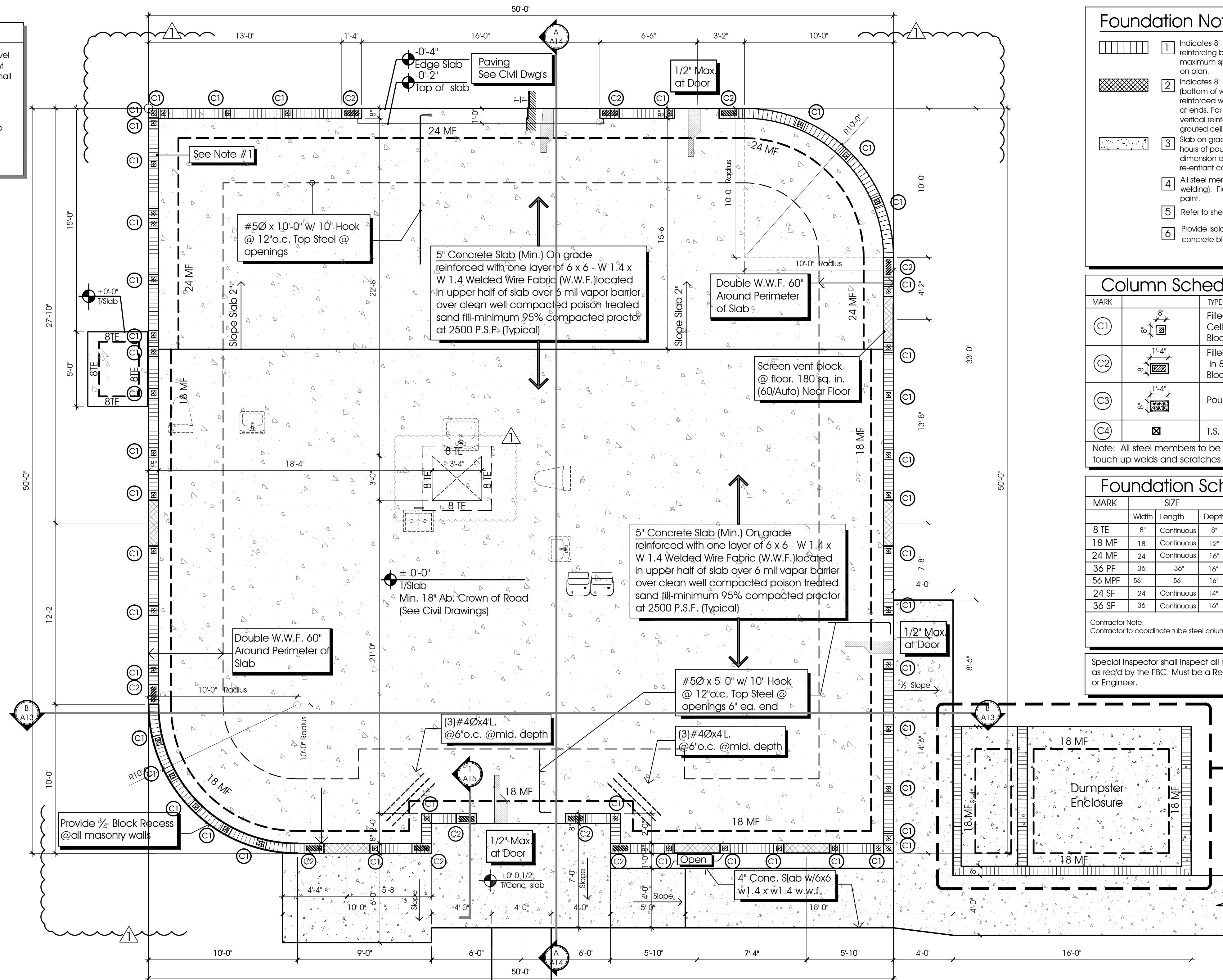
Note: All steel members to be hot dipped galvanized (prior to welding). Field touch up welds and scratches with zinc-rich paint.

Foundation Schedule:

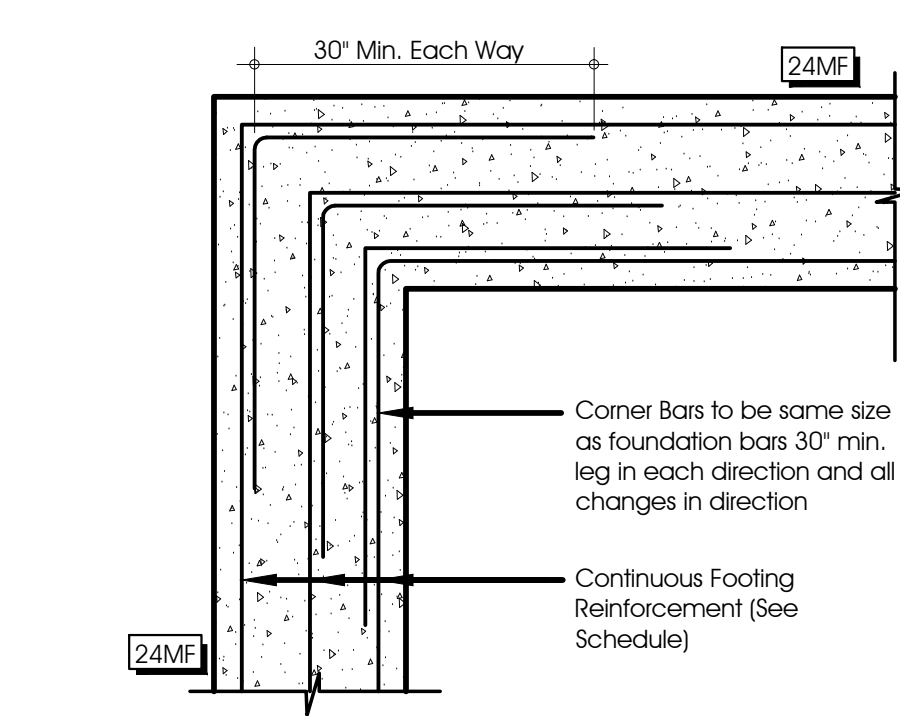
MARK	SIZE			TYPE	REINFORCING (CONTINUOUS : C)			REMARKS
	Width	Length	Depth		Bottom	Middle	Top	
8 TE	8"	Continuous	8"	Mono				Provide #5Ø Corner Bars @ All Corners, 48Ø Lap
18 MF	18"	Continuous	12"	Mono	2 #5Ø	1 #5Ø		
24 MF	24"	Continuous	16"	Mono	3 #5Ø			#5Ø @ 48" o.c. trans.
36 PF	36"	36"	16"	Pad	4 #5Ø each way			Top of footing -2'-0"
56 MPF	56"	56"	16"	Pad	6 #5Ø EACH WAY			6 #4Ø EACH WAY
24 SF	24"	Continuous	14"	Spread	3 #5Ø (C)			Top of footing -2'-0"
36 SF	36"	Continuous	16"	Spread	4 #5Ø (C)			#5Ø @ 24" o.c. trans.

Contractor Note: Contractor to coordinate tube steel column locations and sizes with foundation and floor plans.

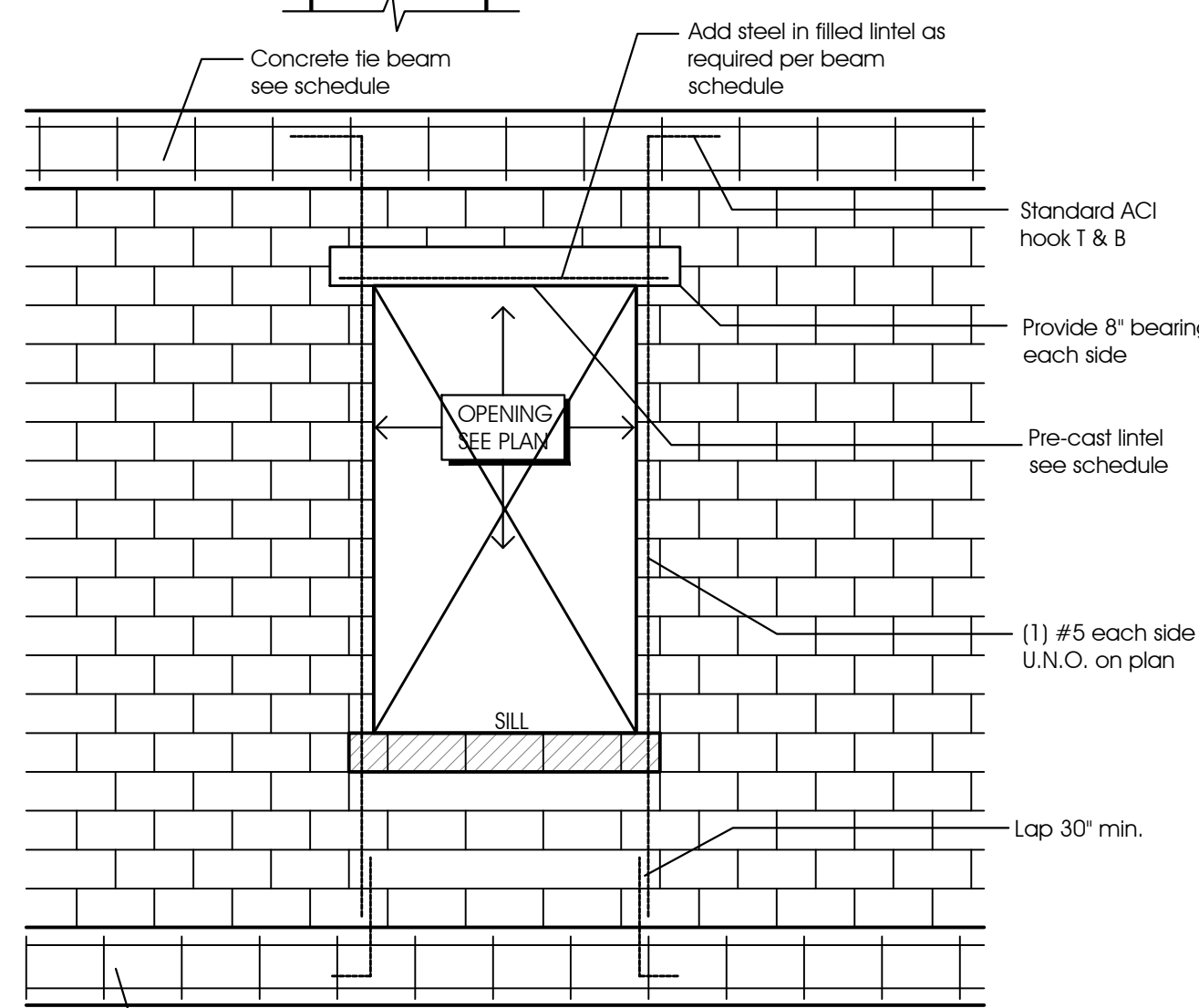
Special Inspector shall inspect all reinforced masonry as read by the FBC. Must be a Registered Architect or Engineer.



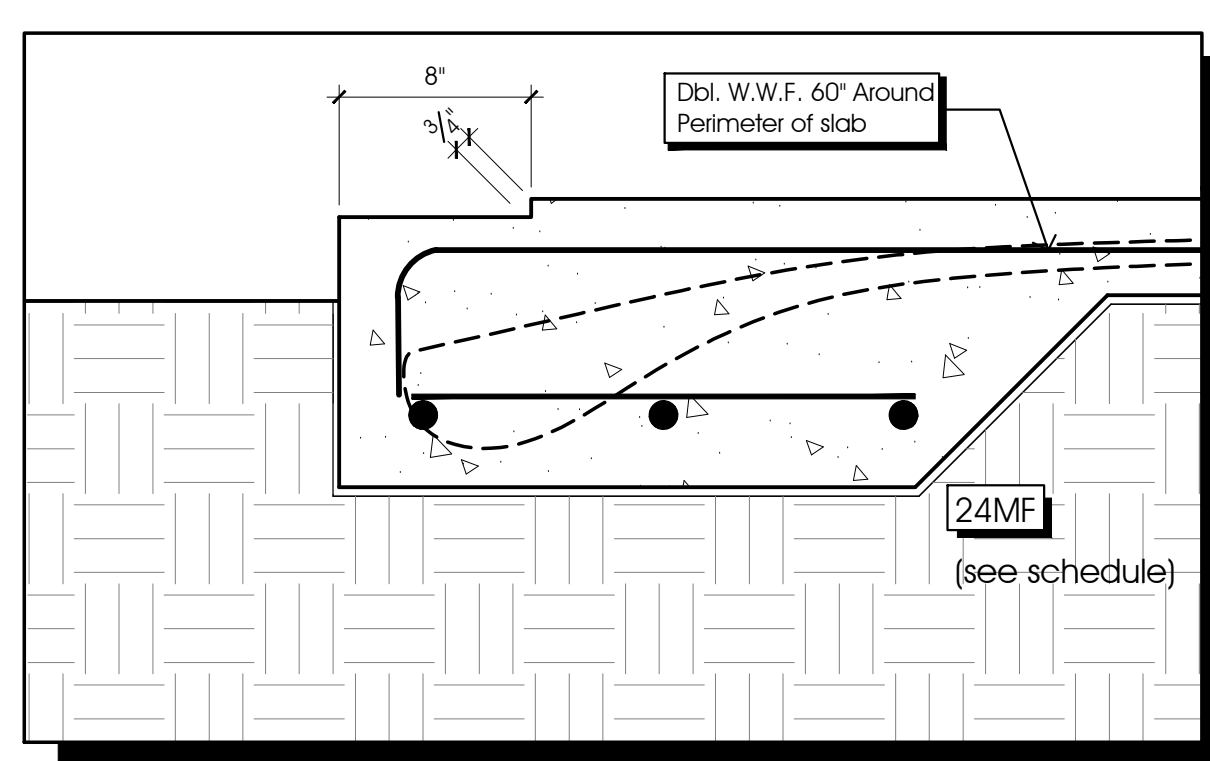
SEE CIVIL ENG. DWGS FOR EXT. CONCRETE SIDEWALK SLAB DETAILS
SEE CIVIL ENG. DWGS FOR EXT. SLAB ELEVATIONS & GRADES



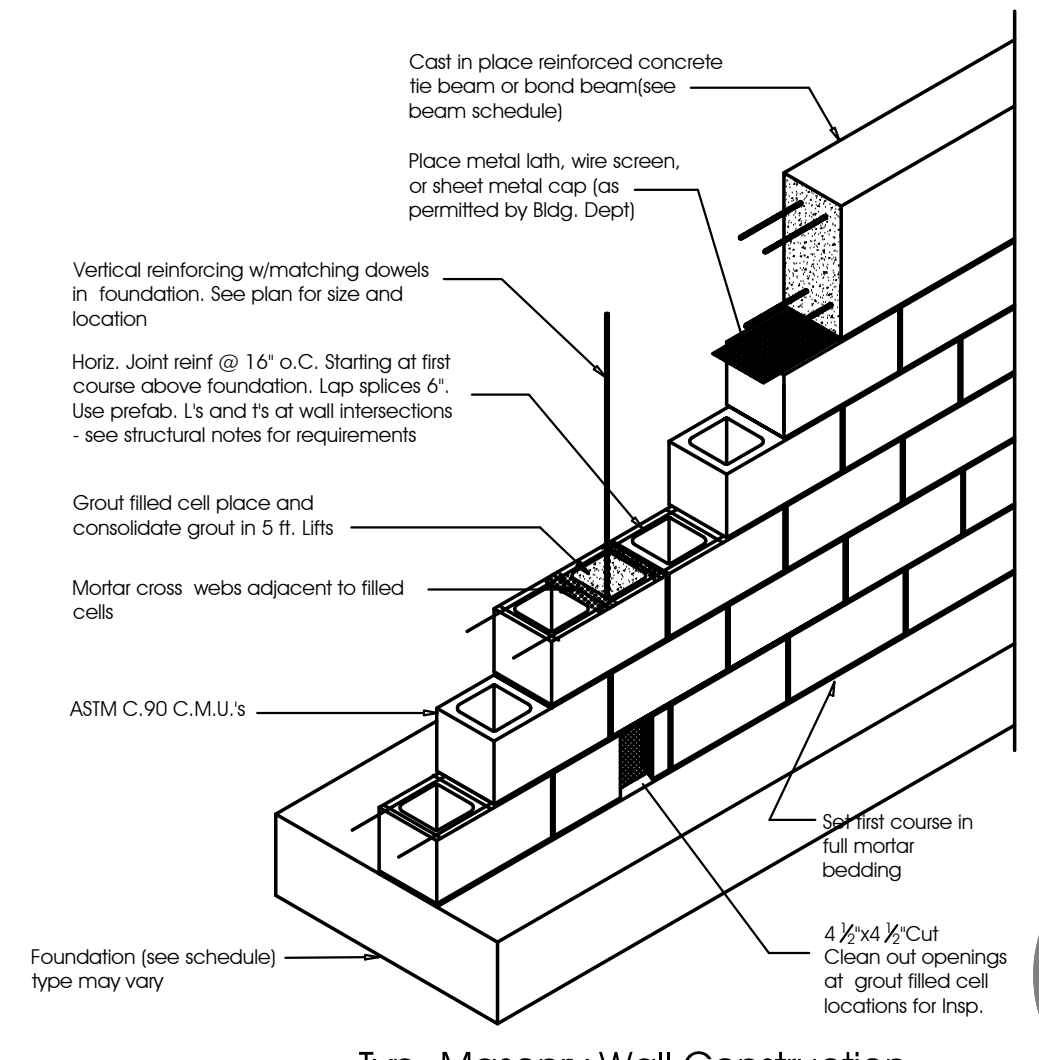
Typ. MF Corner Bar Detail
N.T.S.



Typ. Wall Opening @ Precast Lintel
N.T.S.



Typical Slab Recess
1 1/2\"/>



Typ. Masonry Wall Construction
N.T.S.

Foundation Plan
1/4" SC

Kelly Building for:
Schmidt Investment Properties, LLC
1302 Wallace Drive
Delray Beach, FL 33444

RBA.PN.13714.09

Issued Date
 ○ :Permit Set
 ○ :G.C. Bid Set
 ● 2-27-16:Owner Review Plan Set

ALL BEINGS, CONCEPTS, AND IDEAS CONTAINED AND REPRESENTED HEREIN ARE THE PROPERTY OF RICK BRAUTIGAN ARCHITECTURE, INC. AND MAY NOT BE ALTERED, CHANGED, MODIFIED OR COPIED WITHOUT THE PERMISSION OF RICK BRAUTIGAN ARCHITECTURE, INC. EXPRESSED IN WRITING. 1. DRAWINGS ARE NOT TO BE SCALED. WRITTEN DIMENSIONS HAVE PRECEDENCE OVER ALL SCALED DIMENSIONS. 2. CONTRACTOR TO VERIFY ALL DIMENSIONS AND ADVISE ARCHITECT OF ANY DISCREPANCIES. CONSTRUCTION SHALL NOT PROCEED UNTIL SAID DISCREPANCIES HAVE BEEN RESOLVED. 3. NO MATERIALS OR SYSTEMS ARE TO BE FABRICATED UNTIL ALL DIMENSIONS HAVE BEEN VERIFIED BY CONTRACTOR BY SHOP DRAWINGS HAVE BEEN REVIEWED AND ACCEPTED BY THE ARCHITECT.