

SPRAY FOAM INSULATION SCHEDULE (WALLS)			
INDICATION	TYPE	THICK	' R '
LDI - 3	Light Density spray foam Insulation	3"	11.1
LDI - 4	"	4"	15
LDI - 5	"	5"	18.5
LDI - 5 1/2	"	5 1/2"	20.3
MDI - 3	Medium Density spray foam Insulation	3"	18
MDI - 4	"	4"	24
Medium Density		MD-R-200	
Light Density		LD-C-50-V2	
Designation Based on Icynene			
ROOF/ EXTERIOR WALL SPRAY FOAM NOTE:			
Apply Min. 2" Med. Density SF to connection of all trusses/ studs to plywood sheathing followed by 5 1/2" of Light Density SF			

Occupancy Separation: Business (B) & Storage (S-1) (NOTE: 1 HR. Allowed due to Automatic Sprinkler System)				
Code	Table	Walls & Ceiling	Required	Provided
Florida Building Code Building	508.4	(N) No Separation Required	1 HR	1 hour
Florida Fire Prevention Code	6.1.14.4.1 (b)		1 HR	1 HR 1 hour
NFPA 101 Life Safety Code	6.1.14.4.1 (b)		1 HR	1 HR 1 hour

Wall Legend	
	8" exterior concrete block wall. See Sections for finishes
	New interior non-bearing 3-5/8" metal stud wall partition with 5/8" gyp. bd. See Interior Wall Type Section W1
	New interior non-bearing 1-HR Rated partition.

FBC CODE DATA	
Group B Occupancy	Business
Allowable Height/ Area Table:	503 FBC
Type v (B: Unprotected) - Non Sprinklered	
Allowable SF/ Floor:	9,000
This Bldg. is (1 Floor):	2,433
Allowable Height:	40
This Building:	21-1
Number of stories permitted:	2
Number of stories this bldg.:	1
Occupant Load	
Based on Table 1004.1.1 FBC	
Function: FA SF/ Occ. Load	
Business :	100 Gross
1,310 sf/ 100 =	14 occupants
Storage :	300 Gross
1,123 sf/ 300 =	4 occupants
Total Occupants	18 Occupants
Fire Restrictive Rating For Building Elements Table 601 FBC	
Type V (B) All Elements:	O-HRS

NFPA Interior Office Finish Schedule per section 38.3.3
 Floors: No Requirements
 Walls: Required: Class A, B, or C compliance
 Provided: Class A Drywall
 Ceiling: Required: Class A, B, or C compliance
 Provided: Class A Gypsum Board

NFPA Egress requirements:
 • 38.2.5.2 Dead-end corridors shall not exceed 20 ft.
 • 38.2.5.3 Common paths of travel shall not exceed 75 ft.
 • 38.2.6 Travel Distance to Exits. Travel Distance to exits, measured in accordance with Section 7.6 shall not exceed 200 ft.

Fire Extinguishers: F.E.
 Provide fire extinguishers with a minimum rating of 2-A, 10BC where indicated on plans. Extinguishers are to be located at each exit and with a maximum travel distance of 50'-0" between. Fire extinguishers are to be on site and at the locations shown from start of construction. Construction personnel shall be instructed in the set of the equipment.
 Provide 2-A, 10 BC fire extinguishers at locations determined by the Fire Marshall for light (low) hazard occupancy. Each corridor location shall also have a sign mounted above the fire extinguisher cabinet and perpendicular to the wall identified as 'extinguishers' per code and requirements of fire marshal.

ADA Access Note:
 Provide level transition at entrances to building in compliance with ADA. Verify all slopes leading up to entry comply.

Number of Exits Section 1015 FBC		
Occupancy	Exits required	Exits provided
B & S-1	1	2 (B) & 1(S-1)

NOTE: SEE DWG A5 FOR LIFE SAFETY PLAN

Minimum Number of Required Plumbing Fixtures

Classification	Occupancy	Water Closets	Lavatories	Bathtubs/ Showers	Drinking Fountain	Other
Business	B	1 Per 25 per the 1st 50	1 Per 40 per the 1st 80	—	1 Per 100	—
Storage	S-1	1 Per 100	1 Per 100	—	1 Per 1,000	1 Service Sink

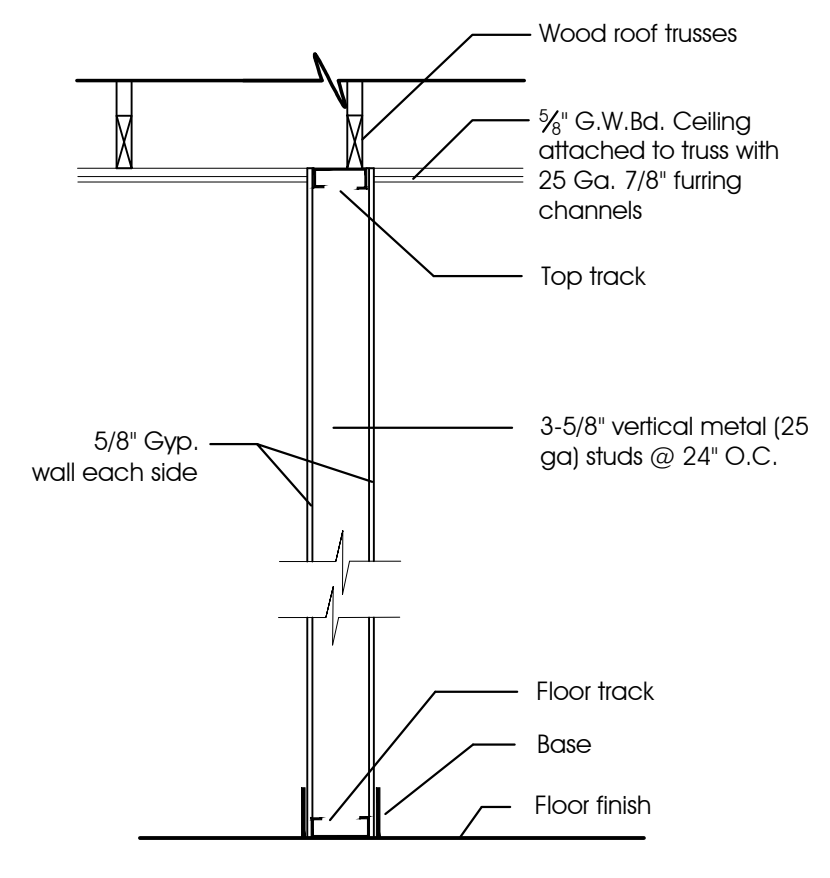
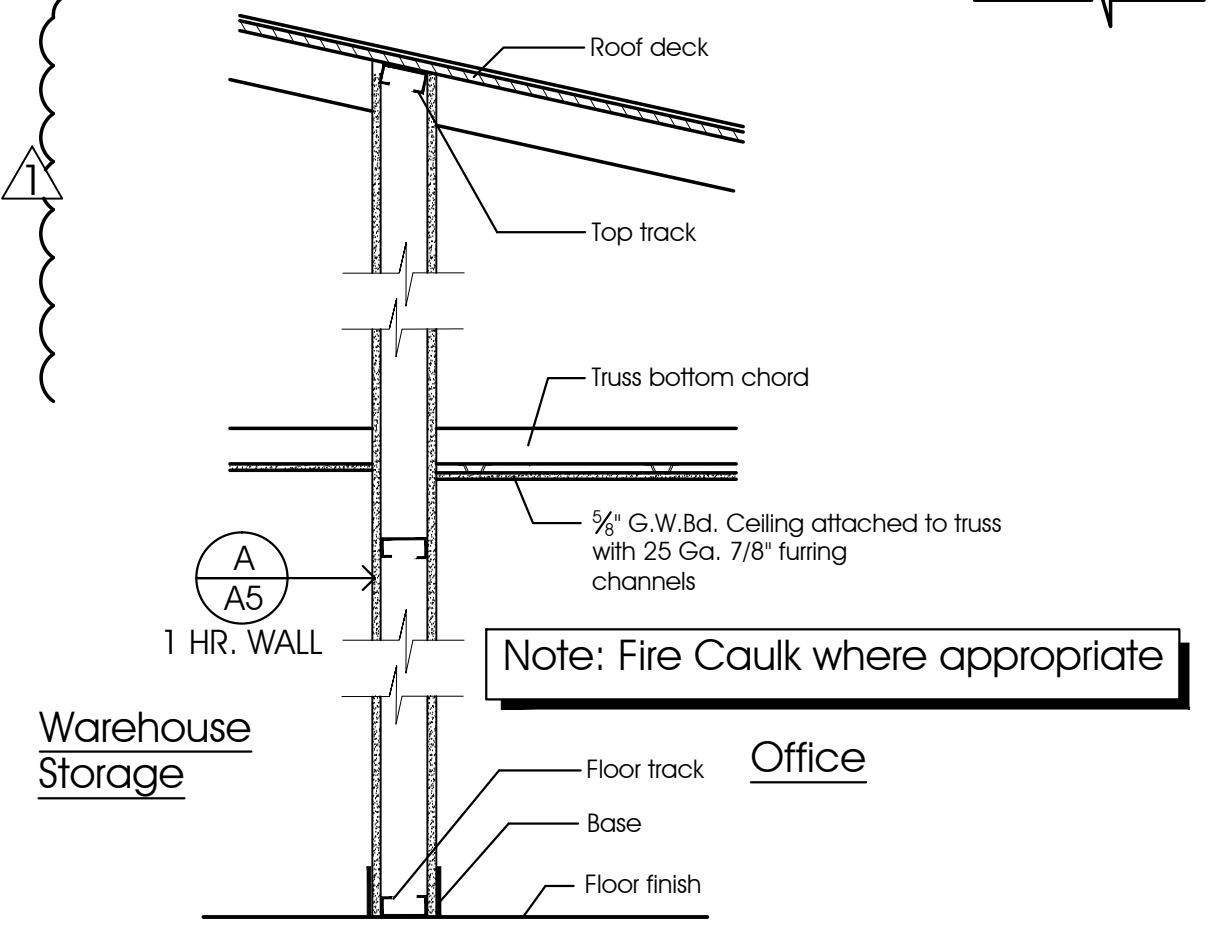
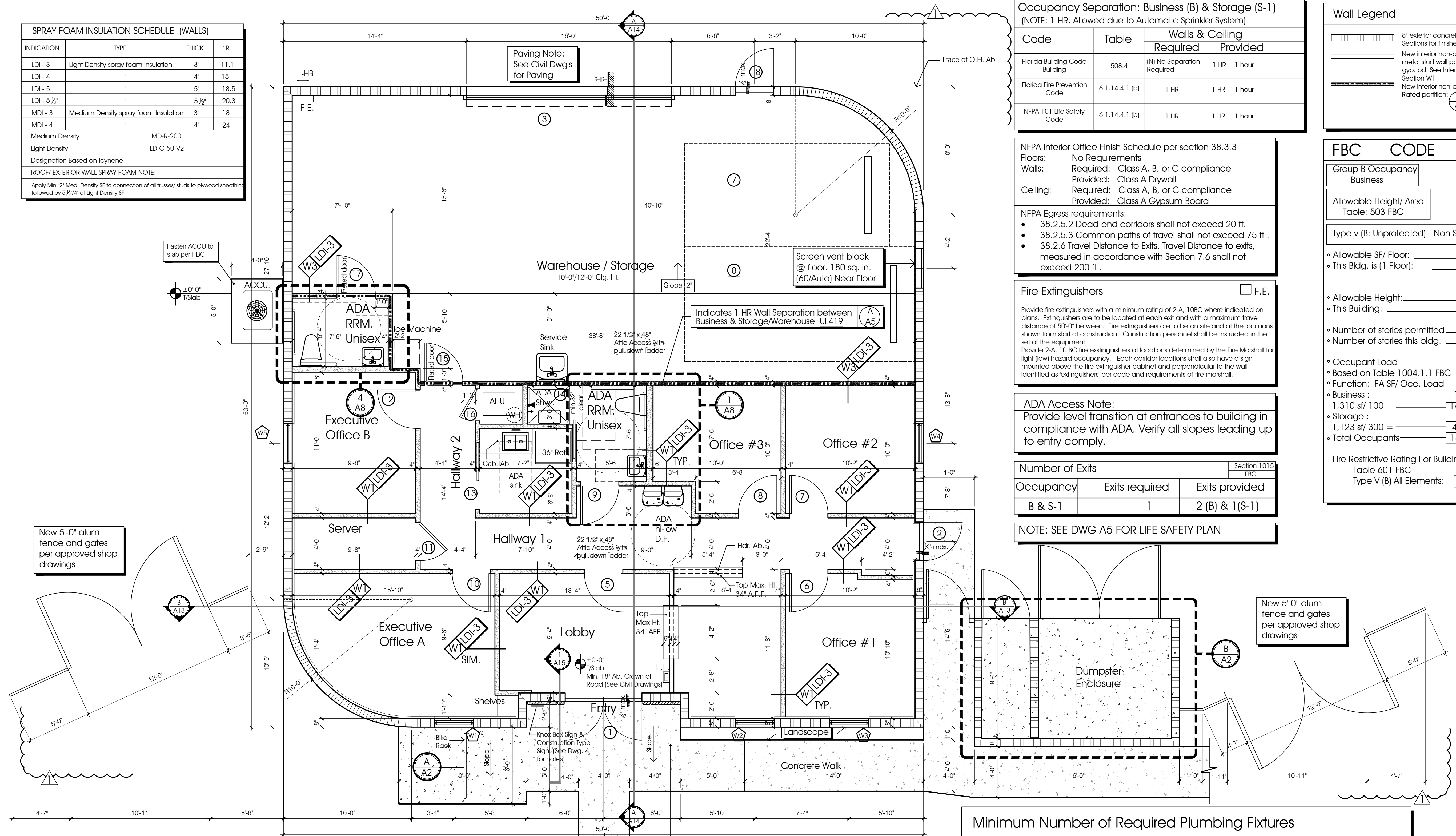
Toilet Room Calculations: Total of Occupants
 Required Plumbing Fixtures for Business Use (1,310 SF) under FBC Plumbing Table 403.1: **14 Total Occupants**

Provided:
 1 Water closet/
 1 Lavatory
 1 drinking fountain per 100 people. (H/L0)

As a Business under FBC Plumbing 403.2 Exception 2 separate facilities not required in Tenant space with less than 15 Occupants

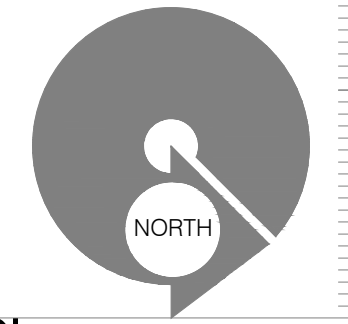
Required Plumbing Fixtures for Storage Use (1,123 SF) under FBC Plumbing Table 400.1: **4 Total Occupants**

Provided:
 1 Unisex Restroom with 1 WC & 1 Lav., each, One service sink



* Attach track runners in accordance with 2510.5 and 2510.6.
 1 Hour Rated Wall Assembly UL - [U419]

* Attach track runners in accordance with 2510.5 and 2510.6.



ALL DESIGN, CONCEPTS, AND IDEAS CONTAINED AND REPRESENTED HEREIN ARE THE PROPERTY OF RICK BRAUTIGAN ARCHITECTURE, INC. AND MAY NOT BE ALTERED, CHANGED, MODIFIED OR COPIED WITHOUT THE PERMISSION OF RICK BRAUTIGAN ARCHITECTURE, INC. EXPRESSED IN WRITING.
 1. DRAWINGS ARE NOT TO BE SCALED. WRITTEN DIMENSIONS HAVE PRECEDENCE OVER ALL SCALED DIMENSIONS. 2. CONTRACTOR TO VERIFY ALL DIMENSIONS AND ADVISE ARCHITECT OF ANY DISCREPANCIES. CONSTRUCTION SHALL NOT PROCEED UNTIL SAID DISCREPANCIES HAVE BEEN RESOLVED.
 3. NO MATERIALS OR SYSTEMS ARE TO BE FABRICATED UNTIL ALL DIMENSIONS HAVE BEEN VERIFIED BY CONTRACTOR. SHOP DRAWINGS HAVE BEEN REVIEWED AND ACCEPTED BY THE ARCHITECT.