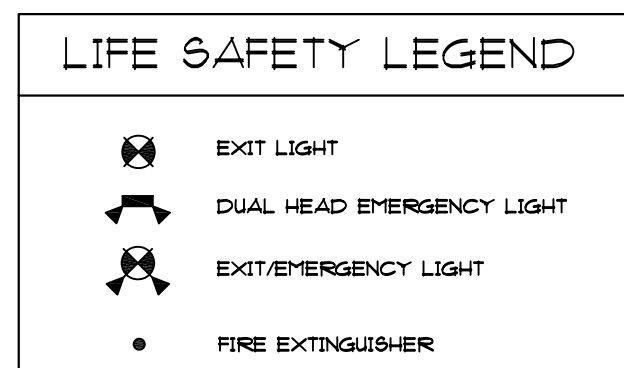


LIFE SAFETY PLAN
1/4" = 1'-0"

- LIFE SAFETY NOTES:**
- Exits calculated at 0.2" per occupant per 2010 FBC-B 1005.1. All doors are minimum 36" wide (34" clear). 34" X 0.2" = 231 occupants maximum permitted at 36" wide door. All egress doors are 36" wide units.
 - No fire alarm system at this project.
 - No fire sprinklers at this project.
 - All exterior door are flush with adjacent exterior walkway (no step).
 - Panic hardware not required at main entrance per 2014 FBC-B 1008.1.10 "Exception" in compliance with 1008.1.9.3 (Item #2).



PROJECT DATA AT THIS TENANT:

| | |
|-----------------------|---|
| CONSTRUCTION TYPE: | TYPE 5B, UNPROTECTED, UNSPRINKLED. |
| FLOOR AREA | = 2,680 S.F. |
| OCCUPANT LOAD = 80 | 7 - 1,364 S.F. KITCHEN (1/200 S.F.) 73 - 1,100 S.F. UNCONCENTRATED ASSEMBLY (1/115 S.F.) |
| OCCUPANCY | = ASSEMBLY (A-2) |
| EXITS | = TWO REQUIRED PER TABLE 1015.1 |
| FIRE RATED CORRIDORS | = N/A PER TABLE 1018.1 |
| MAXIMUM DEAD END | = 20 FEET PER TABLE 1018.4 |
| MAXIMUM TRAVEL | = 200 FEET PER TABLE 1016.2 |
| MAXIMUM COMMON TRAVEL | = 75 FEET PER 1014.3 |

CODE REFERENCES:

- 2014 Florida Building Code
- 2014 Florida Building Code - Existing Building
- 2014 Florida Building Code - Plumbing
- 2014 Florida Building Code - Mechanical
- 2014 Florida Building Code - Energy
- 2014 Florida Building Code - Accessibility
- 2012 NFPA 101
- 2011 NEC (NFPA 72)
- 2012 Florida Fire Prevention Code
- 2014 FLORIDA BUILDING CODE - LEVEL 3 ALTERATIONS

SEATING CAPACITY = 50

PUBLIC WATER & SEWER AT THIS PROJECT

System No. W-L-1054
F Ratings - 1 and 2 Hr (See Items 1 and 3)
T Rating - 0 Hr
L Rating At Ambient - Less Than 1 CFM/Sq Ft
L Rating At 400 F - 4 CFM/Sq Ft

1. Wall Assembly -- The 1 or 2 hr fire-rated gypsum wallboard/stud wall assembly shall be constructed of the materials and in the manner specified in the individual U300 or U400 Series Wall and Partition Designs in the UL Fire Resistance Directory and shall include the following construction features:
A. Studs -- Wall framing may consist of either wood studs or steel channel studs. Wood studs to consist of nom 2 by 4 in. lumber spaced 16 in. OC. Steel studs to be min 2-1/2 in. wide and spaced max 24 in. OC. When steel studs are used and the diam of opening exceeds the width of stud cavity, the opening shall be framed on all sides using lengths of steel stud installed between the vertical studs and screw-attached to the steel studs at each end. The framed opening in the wall shall be 4 to 6 in. wider and 4 to 6 in. higher than the diam of the penetrating item such that, when the penetrating item is installed in the opening, a 2 to 3 in. clearance is present between the penetrating item and the framing on all four sides.
B. Gypsum Board* -- 5/8 in. thick, 4 ft wide with square or tapered edges. The gypsum board type, thickness, number of layers, fastener type and sheet orientation shall be as specified in the individual U300 or U400 Series Design in the UL Fire Resistance Directory. Max diam of opening is 32-1/4 in. for steel stud walls. Max diam of opening is 14-1/2 in. for wood stud walls.
The F Rating of the firestop system is equal to the fire rating of the wall assembly.

HILTI FIRESTOP SYSTEMS
Reproduced by HILTI, Inc. Courtesy of Underwriters Laboratories, Inc. December 4, 2002
CLASSIFIED UL US
Page: 1 of 2

System No. W-L-1054
F Ratings - 1 and 2 Hr (See Items 1 and 3)
T Rating - 0 Hr
L Rating At Ambient - Less Than 1 CFM/Sq Ft
L Rating At 400 F - 4 CFM/Sq Ft

2. Through-Penetrants -- One metallic pipe, conduit or tubing to be installed either concentrically or eccentrically within the firestop system. The annular space shall be min 0 in. to max 2-1/4 in. Pipe may be installed with continuous point contact. Pipe, conduit or tubing may be installed at an angle not greater than 45 degrees from perpendicular. Pipe, conduit or tubing to be rigidly supported on both sides of wall assembly. The following types and sizes of metallic pipes, conduits or tubing may be used:
A. Steel Pipe -- Nom 30 in diam (or smaller) Schedule 10 (or heavier) steel pipe.
B. Iron Pipe -- Nom 30 in. diam (or smaller) cast or ductile iron pipe.
C. Conduit -- Nom 4 in diam (or smaller) steel electrical metallic tubing or 6 in. diam steel conduit.
D. Copper Tubing -- Nom 6 in. diam (or smaller) Type L (or heavier) copper tubing.
E. Copper Pipe -- Nom 6 in. diam (or smaller) regular (or heavier) copper pipe.
3. Fill, Void or Cavity Material -- Sealant -- Min 5/8 in. thickness of fill material applied within the annulus, flush with both surfaces of wall. At the point or continuous contact locations between pipe and wall, a min 1/2 in. diam bead of fill material shall be applied at the pipe wall interface on both surfaces of wall.
HILTI CONSTRUCTION CHEMICALS, DIV OF HILTI INC -- FS-One Sealant.
*Bearing the UL Classification Mark

HILTI FIRESTOP SYSTEMS
Reproduced by HILTI, Inc. Courtesy of Underwriters Laboratories, Inc. December 4, 2002
CLASSIFIED UL US
Page: 2 of 2

System No. W-L-2078
F Ratings - 1 & 2 Hr (See Item 1)
T Ratings - 1 & 2 Hr (See Item 1)

1. Wall Assembly -- The fire-rated gypsum board/stud wall assembly shall be constructed of the materials and in the manner specified in the individual U300 or U400 Series Wall and Partition Designs in the UL Fire Resistance Directory and shall include the construction features noted below. The hourly F Rating and T Rating of the firestop system is equal to the hourly fire rating of the wall assembly in which it is installed:
A. Studs -- Wall framing may consist of either wood studs or steel channel studs. Wood studs to consist of nom 2 by 4 in. lumber spaced 16 in. OC. Steel studs to be min 2-1/2 in. wide and spaced max 24 in. OC.
B. Gypsum Board* -- Nom 5/8 in. thick gypsum wallboard, as specified in the individual Wall and Partition Design. Max diam of opening is 7 in.
2. Through-Penetrants -- One nonmetallic pipe, conduit or tubing to be installed within the firestop system. The annular space between pipe and periphery of opening shall be min 0 in. (point contact) to max 1/2 in. Pipe or conduit to be rigidly supported on both sides of the wall assembly. The following types and sizes of nonmetallic pipes may be used:
A. Polyvinyl Chloride (PVC) Pipe -- Nom 6 in. diam (or smaller) Schedule 40 solid-core or cellular core PVC pipe for use in closed (process or supply) or vented (drain, waste or vent) piping system.
B. Chlorinated Polyvinyl Chloride (CPVC) Pipe -- Nom 6 in. diam (or smaller) SDR17 CPVC pipe for use in closed (process or supply) or vented (drain, waste or vent) piping systems.
C. Acrylonitrile Butadiene Styrene (ABS) Pipe -- Nom 6 in. diam (or smaller) Schedule 40 solid-core or cellular core ABS pipe for use in closed (process or supply) or vented (drain, waste or vent) piping systems.
D. Flame Retardant Polypropylene (FRPP) Pipe -- Nom 6 in. diam (or smaller) Schedule 40 FRPP pipe for use in closed (process or supply) or vented (drain, waste or vent) piping system.
E. Polyvinylidene Fluoride (PVDF) Pipe -- Nom 4 in. diam (or smaller) PVDF pipe for use in closed (process or supply) or vented (drain, waste or vent) piping system.
3. Firestop Device* -- Firestop Collar -- Firestop collar shall be installed in accordance with the accompanying installation instructions. Collar to be installed and latched around the pipe and secured to both sides of the wall using the anchor hooks provided with the collar. (Minimum 2 anchor hooks for 1-1/2 and 2 in. diam pipes, 3 anchor hooks for 3 and 4 in. diam pipes, and 4 anchor hooks for 6 in. diam pipes). The anchor hooks are to be secured to the surface of wall with 3/16 2-1/2 in. long toggle bolts along with washers.
HILTI CONSTRUCTION CHEMICALS, DIV OF HILTI INC -- CP 643 50/1.5N, CP 643 63/2N, CP 643 90/3N, CP 643 110/4N or CP 643 160/6N Firestop Collar
*Bearing the UL Classification Mark

HILTI FIRESTOP SYSTEMS
Reproduced by HILTI, Inc. Courtesy of Underwriters Laboratories, Inc. March 22, 2004
CLASSIFIED UL US
Page: 1 of 2

System No. W-L-2078
F Ratings - 1 & 2 Hr (See Item 1)
T Ratings - 1 & 2 Hr (See Item 1)

3. Firestop Device* -- Firestop Collar -- Firestop collar shall be installed in accordance with the accompanying installation instructions. Collar to be installed and latched around the pipe and secured to both sides of the wall using the anchor hooks provided with the collar. (Minimum 2 anchor hooks for 1-1/2 and 2 in. diam pipes, 3 anchor hooks for 3 and 4 in. diam pipes, and 4 anchor hooks for 6 in. diam pipes). The anchor hooks are to be secured to the surface of wall with 3/16 2-1/2 in. long toggle bolts along with washers.
HILTI CONSTRUCTION CHEMICALS, DIV OF HILTI INC -- CP 643 50/1.5N, CP 643 63/2N, CP 643 90/3N, CP 643 110/4N or CP 643 160/6N Firestop Collar
*Bearing the UL Classification Mark

HILTI FIRESTOP SYSTEMS
Reproduced by HILTI, Inc. Courtesy of Underwriters Laboratories, Inc. March 22, 2004
CLASSIFIED UL US
Page: 2 of 2

| REVISIONS | BY |
|-----------|----|
| | |
| | |
| | |
| | |

KUOPPALA & ASSOCIATES, P.A.
ARCHITECTS
FLORIDA ARCHITECT #01656
LICENSE #AAC-001656
(561) 682-1909 - OFF.
(561) 682-1975 - FAX.

ROBERT E. KUOPPALA
FLORIDA ARCHITECT #0481
925 SOUTH MILITARY TRAIL, SUITE D-10
WEST PALM BEACH, FLORIDA 33415

INTERIOR IMPROVEMENTS

FIRE UP PIZZA

8170 OKEECHOBEE BLVD. - SUITES 1 & 2
SEDONA COMMONS - BUILDING #7
WEST PALM BEACH, FLORIDA

| | |
|-----------|----------------|
| DRAWN | GUT |
| CHECKED | KUOPPALA |
| DATE | APRIL 21, 2016 |
| SCALE | AS NOTED |
| COMM. NO. | 16-07 |
| SHEET | A-4 |
| OF | 5 SHEETS |