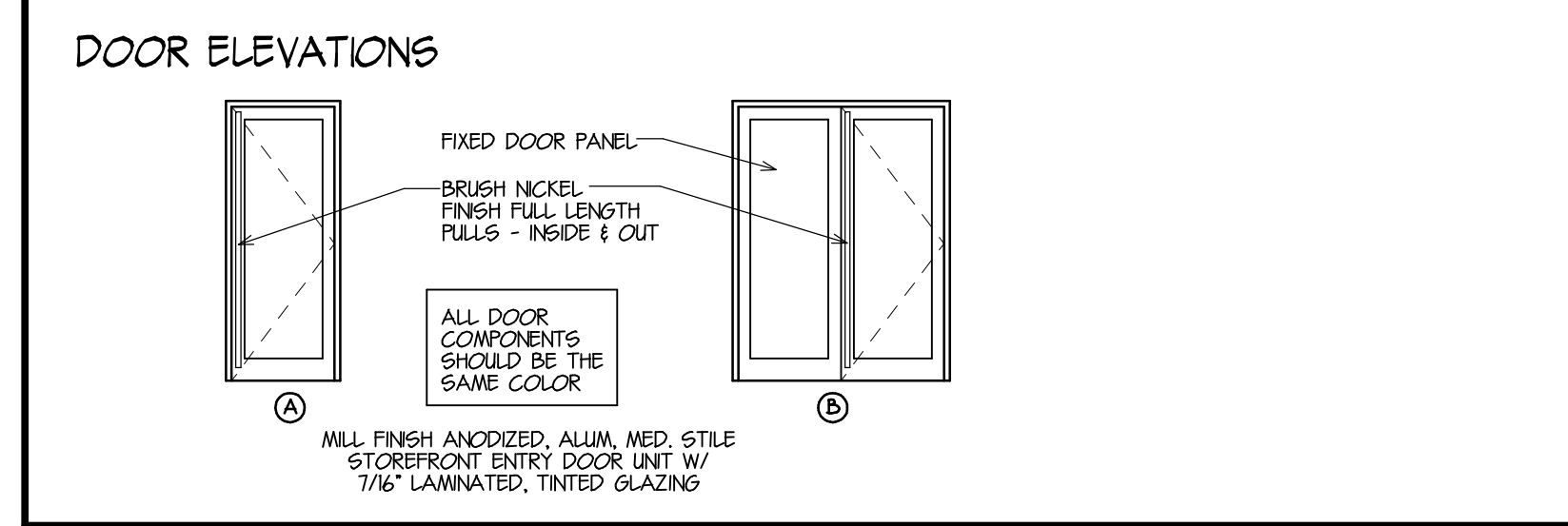


DOOR SCHEDULE

mark	door size	door		finish		frame details				notes	
		type	construction	primed / painted	factory finish	stained / sealed	head detail	jamb detail	sill detail		rating
1	3'-0" x 8'-0" x 1 3/4"	A	ALM/GL	O			1/A1	1/A1	2/2/A1		12,3,4,5
2	3'-0" x 8'-0" x 1 3/4"	A	ALM/GL	O			1/A1	1/A1	2/1/A1		12,3,4,5
3	3'-0" x 8'-0" x 1 3/4" (PAIR)	B	ALM/GL	O			1/A1	1/A1	2/1/A1		12,3,4,5,7,11
4											
5											

- KEYED DOOR NOTES:**
- STANDARD PUSH/PULL BAR OR HANDLE W/ CONCEALED 3 POINT KEYED CYLINDER LOCK ON ACTIVE LEAF & 2 POINT CONCEALED THUMB LATCH LOCK ON INACTIVE LEAF
 - FULL PERIMETER WEATHERSTRIP'G W/ BOTTOM DOOR SEAL, SWEEP AND DRIP
 - FULL PERIMETER WEATHERSTRIP'G W/ BOTTOM DOOR SEAL
 - ADA COMPLIANT ALUM THRESHLD
 - 2) PAIR 4 1/2" S.S. HINGES
 - 15) PAIR 4 1/2" S.S. HINGES
 - SURFACE MTD CLOSER
 - ADA COMPL. BRUSH'D ALUM LEVER TYPE KEYED CYLINDER OFFICE / STORAGE SET
 - ADA COMPL. BRUSH'D ALUM LEVER TYPE CYLINDER PASSAGE SET
 - ADA COMPL. BRUSH'D ALUM LEVER TYPE CYLINDER PRIVACY SET
 - IF LEFT PANEL IS FIXED
 - A FULL HEIGHT BRUSHED NICKEL VERTICAL FULL BAR

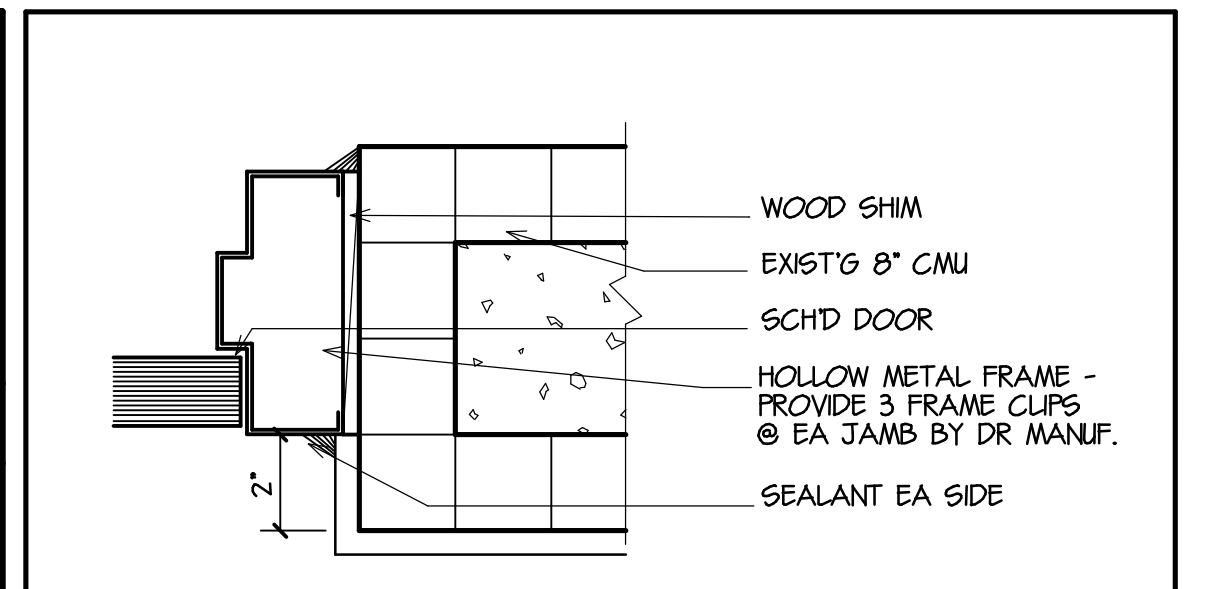
- GENERAL DOOR NOTES:**
- SEE SHEET CS FOR SCHED. MIN WIND PRESSURES
 - COORDINATE ROUGH OPENING DIMENSIONS WITH PRODUCT MANUF.
 - DOOR HARDWARE SHALL BE SCHLAGE PRODUCTS
 - LOCKS SHALL BE SCHLAGE W/ 6 PIN REMOVABLE CORE LOCK



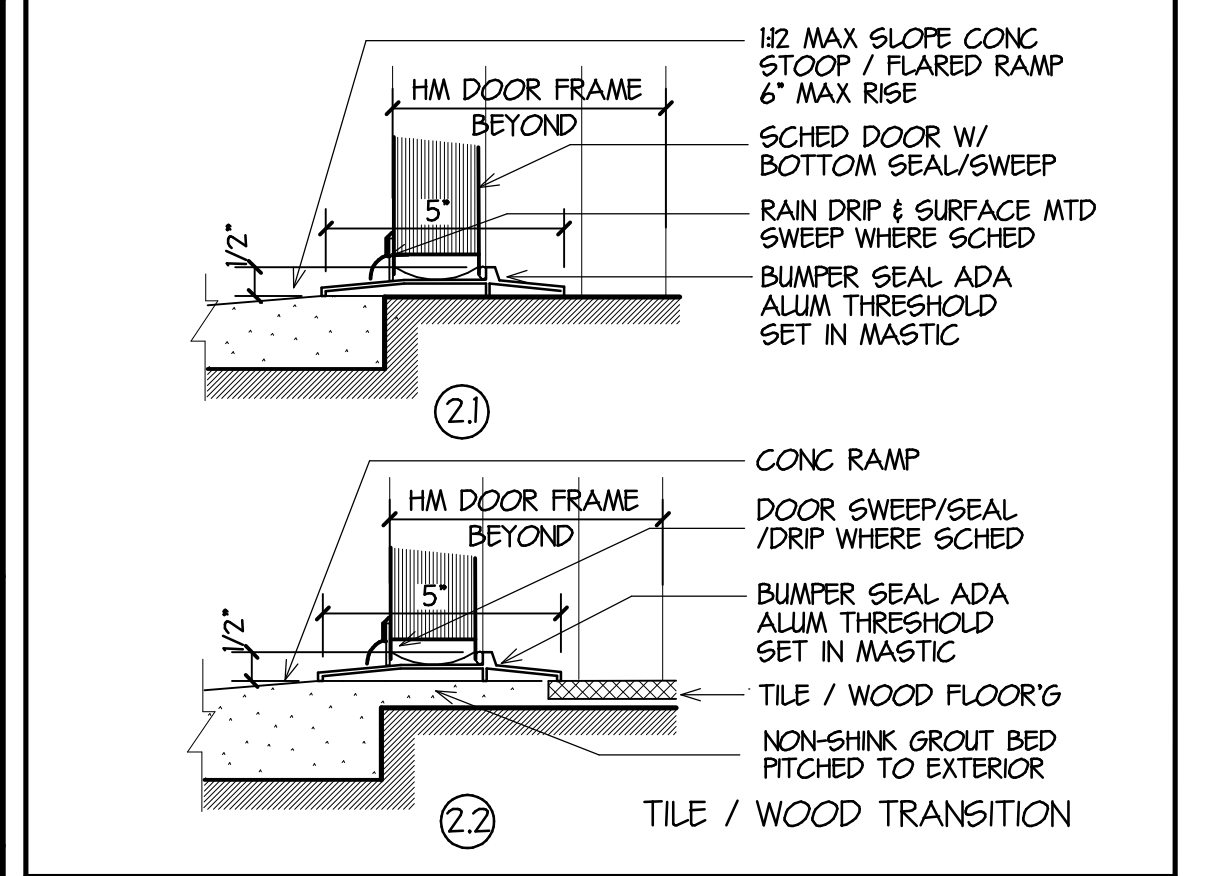
WINDOW SCHEDULE

mark	mdl #	r. o. size	type			finish		glass		frame details				notes				
			FIXED	ALUM.	STOREFRONT	ACRYLIC DOME SKYLIGHT	SINGLE HUNG	VINYL	FACTORY PAINT - BLACK	FACTORY GREY	NONE	1 1/4" INSL. LAM. TINTED	MIRRORED		NONE	head detail	jamb detail	sill detail
(A)		2'-8" x 5'-0"												3/A1	3/A1	4/A1	8'-0"	
(B)		NOT USED																
(C)																		

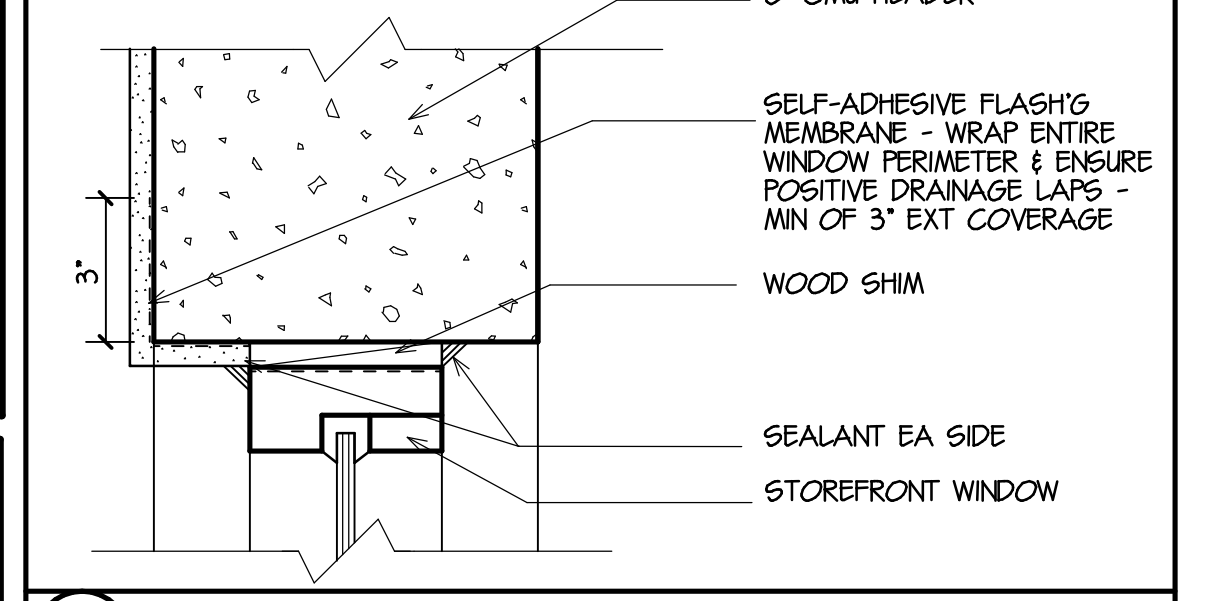
- GENERAL WINDOW NOTES:**



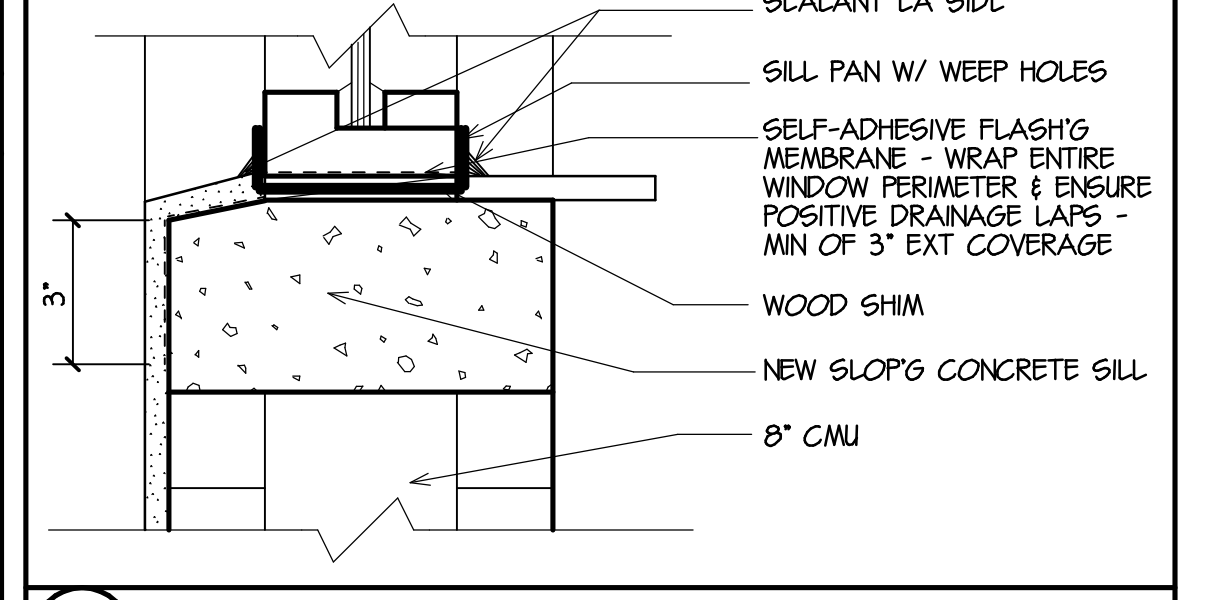
1 DOOR JAMB (HEAD SIM) 3'



2 ADA THRESHOLD 3'



3 WINDOW HEAD (JAMB SIM) 3'



4 WINDOW SILL 3'

COMMERCIAL - RESIDENTIAL - INSTITUTIONAL - EGRESS

DR. VAKANI ARCHITECTS

483 NE JENSEN BEACH BLVD
JENSEN BEACH, FLORIDA 34957
PHONE: 772-289-6032
FAX: 772-289-9850

PROPOSED ACCESSORY SHELL BUILDING FOR:

DR. VAKANI

2916 SW GATLIN BLVD
PORT ST. LUCIE, FLORIDA

SEAL

REVISIONS

BD SET NOT FOR CONSTRUCTION

JOB NO. 13-564A
DATE 5-4-16
DRAWN BY JB
CHECKED BY SMG

SHEET **A1** OF