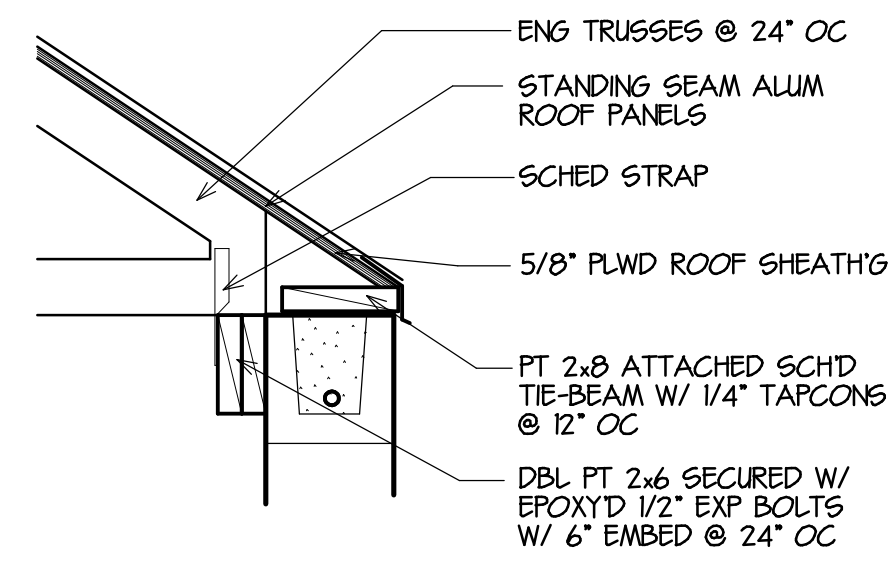
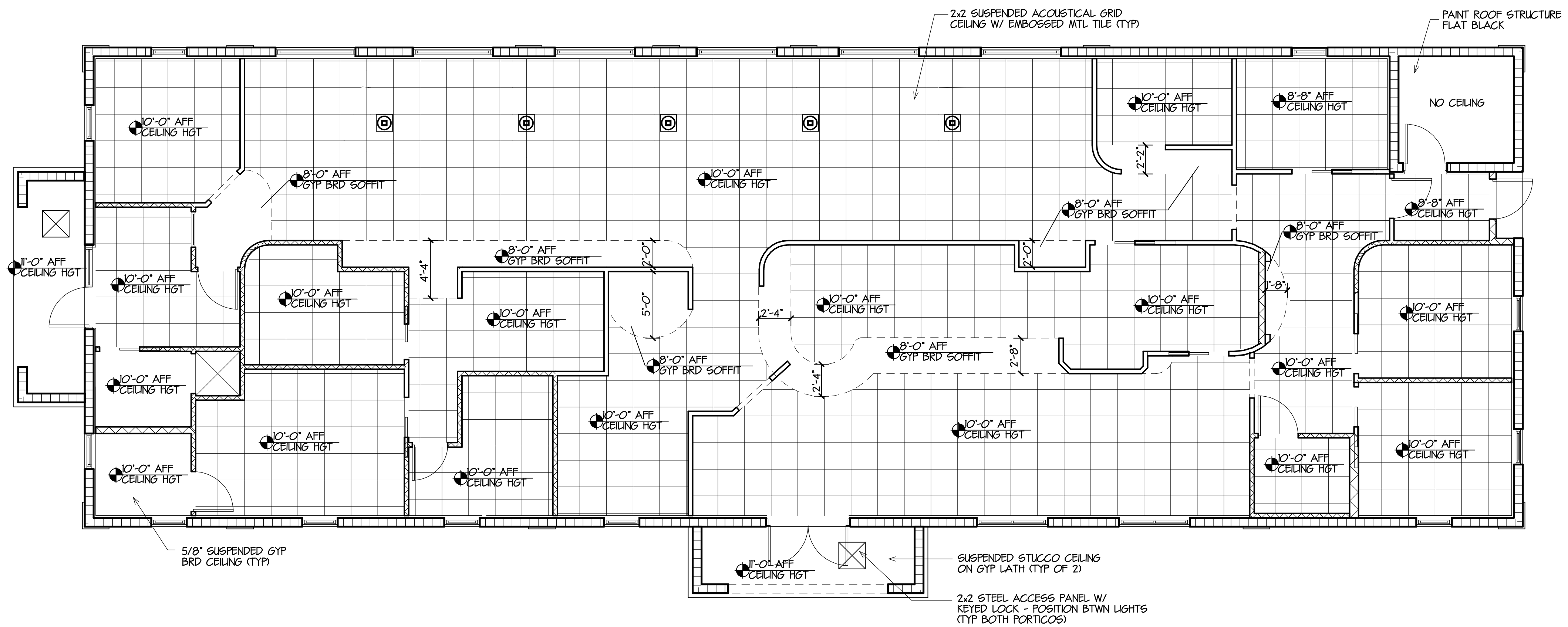


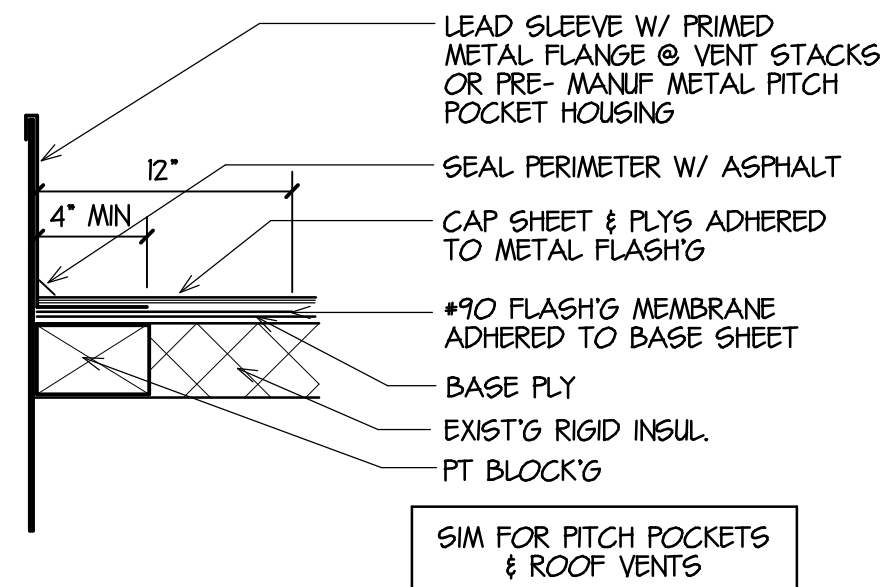
1 SCUPPER DETAIL



2 EAVE DETAIL

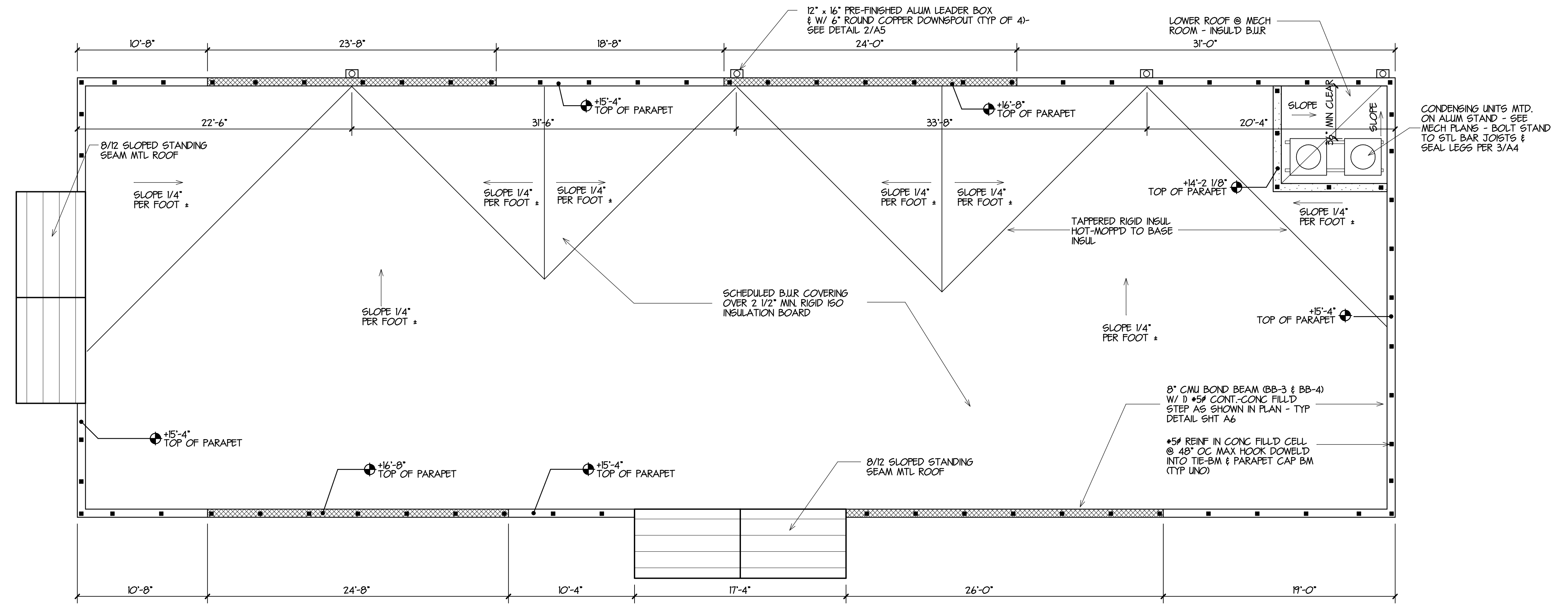


REFLECTED CEILING PLAN



3 SCUPPER DETAIL

ROOFING SPECIFICATION
FLAT DECK ROOFING - B.J.R
 MECHANICALLY FASTEN 2 1/2" RIGID ISO BASE INSULATION TO STEEL DECK W/ #12 - #14 STL DECK SCREWS W/ 3" WASHER @ 13.2 PER SQFT DENSITY - HOT MOP TAPERED INSULATION TO BASE INSUL.
 HOT MOP 1) LAYER #90 MODIFIED FIBERGLASS BASE SHEET TO INSUL. AT A RATE OF 20-40 LBS/SQUARE
 HOT MOP ADDITIONAL 2) LAYERS OF #40 MODIFIED FIBERGLASS PLY SHEETS AT A RATE OF 20-40 LBS/SQUARE
 TORCH APPLY #90 MODIFIED FIBERGLASS GRANULATED CAP SHEET.
 BASIS OF DESIGN: CERTAIN TEED - APP MODIFIED SYSTEM TYPE B0
SLOPED ROOFING - STANDING SEAM
 16" WIDE - 032" ALUM STANDING SEAM ROOF PANELS W/ FACTORY BLACK KYNAR FINISH, MECHANICALLY SEALED TO 6" LONG STEEL CLIPS @ 3" FROM EDGE & 8" OC W/ 4) #10x1" EA CLIP - OVER -
 #30 SELF ADHERE'G WATER SHIELD MEMBRANE SECURED TO #30 FELT BASE SHEET TIN TAGGED @ 6" OC EDGES / LAPS & 12" OC FIELD TO WOOD ROOF SHEATHING
 BASIS OF DESIGN: ENGLERT 1300 ALUMINUM ROOF PANELS, SYSTEM A0



ROOF PLAN

COMMERCIAL - RESIDENTIAL - INSTITUTIONAL - ERECTION
ARANFIELD ARCHITECTS
 483 NE JENSEN BEACH BLVD
 GREEN BEACH, FLORIDA 3457
 PHONE: 772-285-6032
 FAX: 772-285-9800

PROPOSED ORTHODONTISTS OFFICE FOR:
DR. VAKANI
 2801 SW GARDEN BLVD
 PORT ST. LUCIE, FLORIDA

SEAL

REVISIONS
 BD SET NOT FOR CONSTRUCTION

JOB NO. B-564
 DATE 5-4-16
 DRAWN BY JB
 CHECKED BY SMG

SHEET **A4** OF