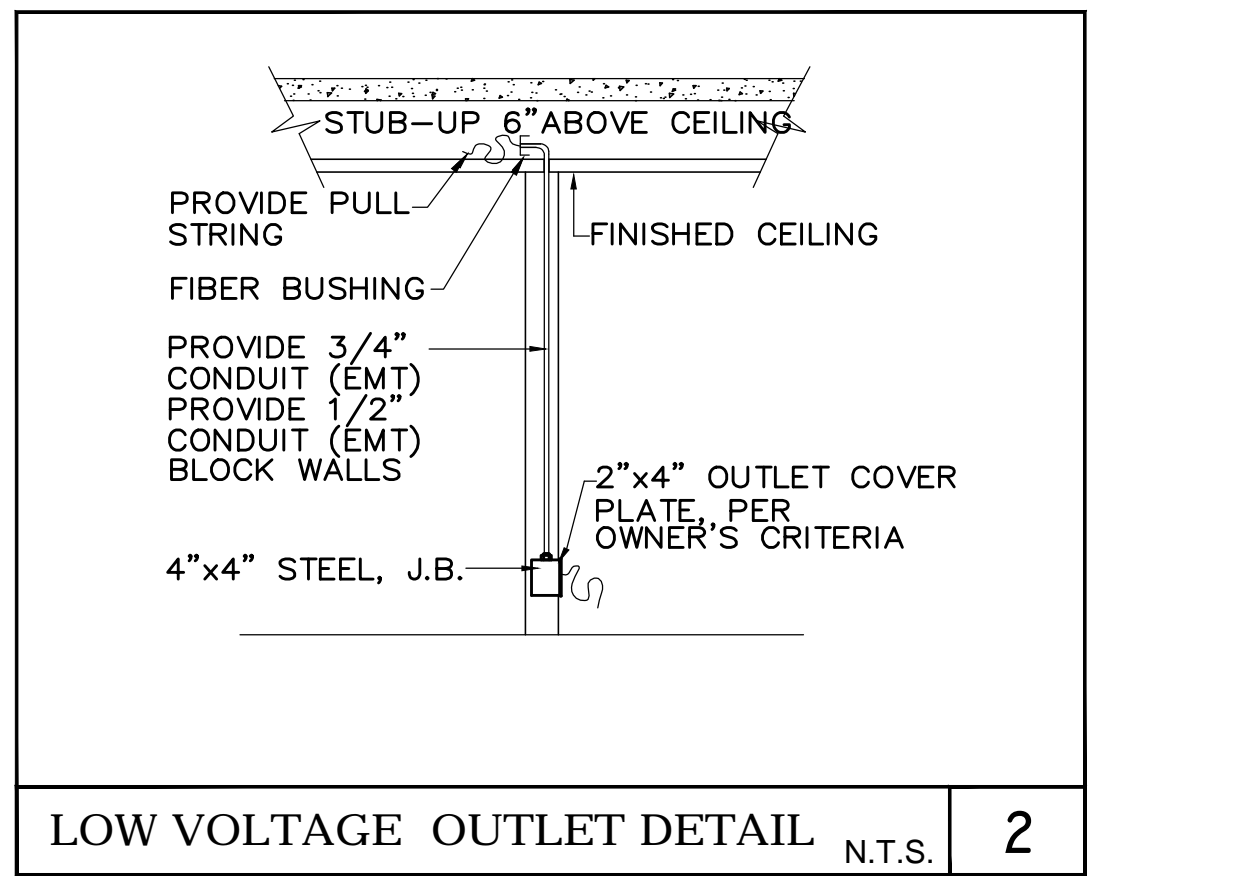
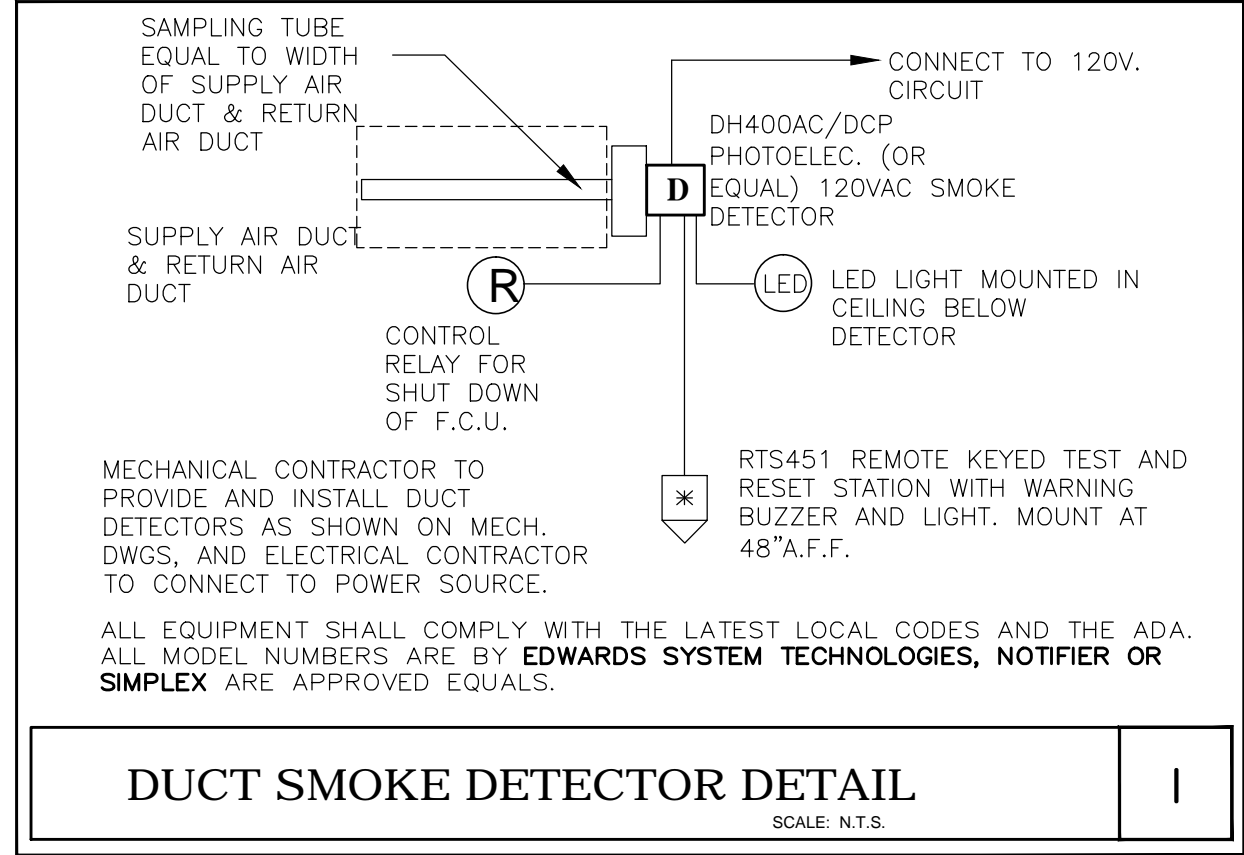
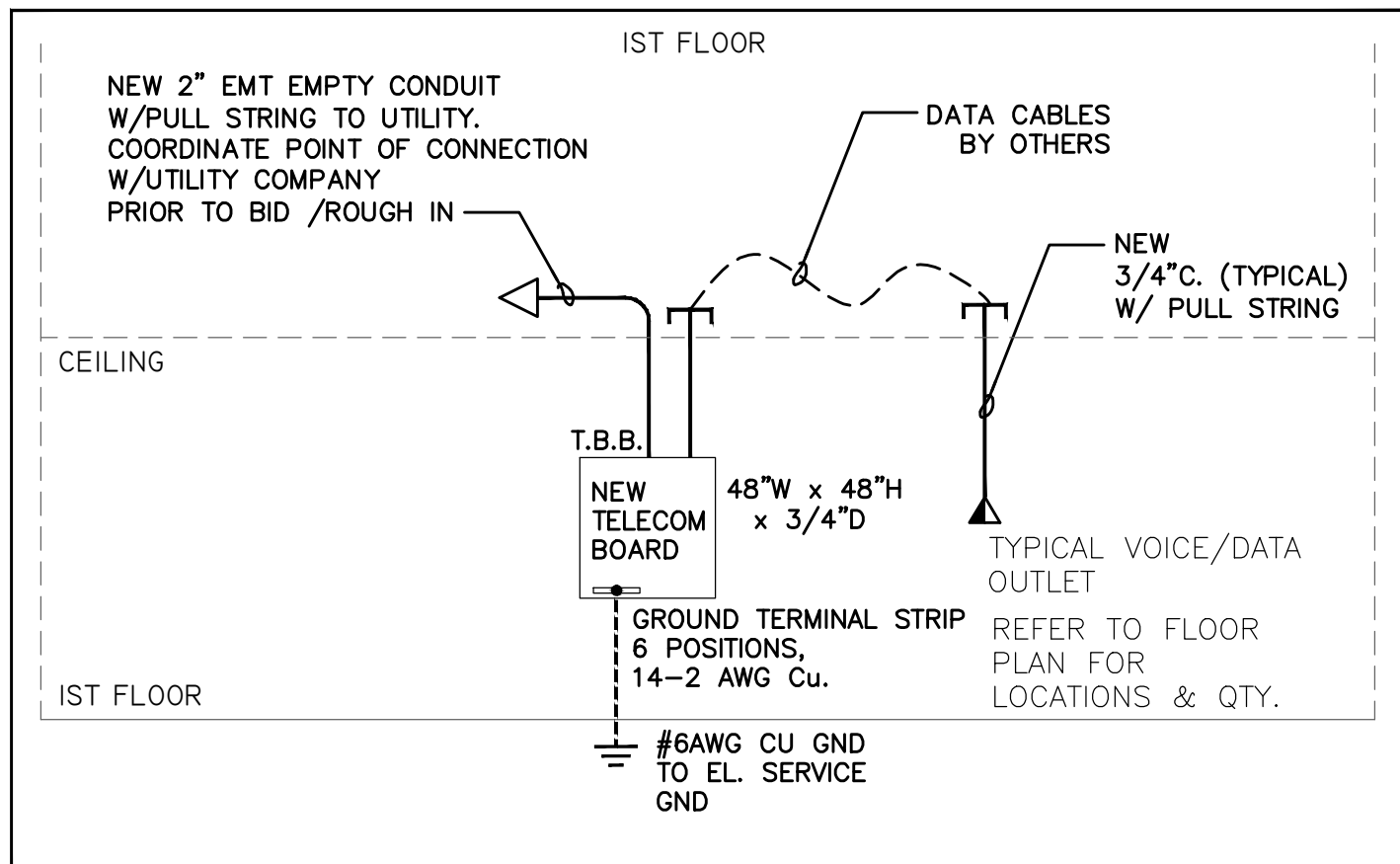
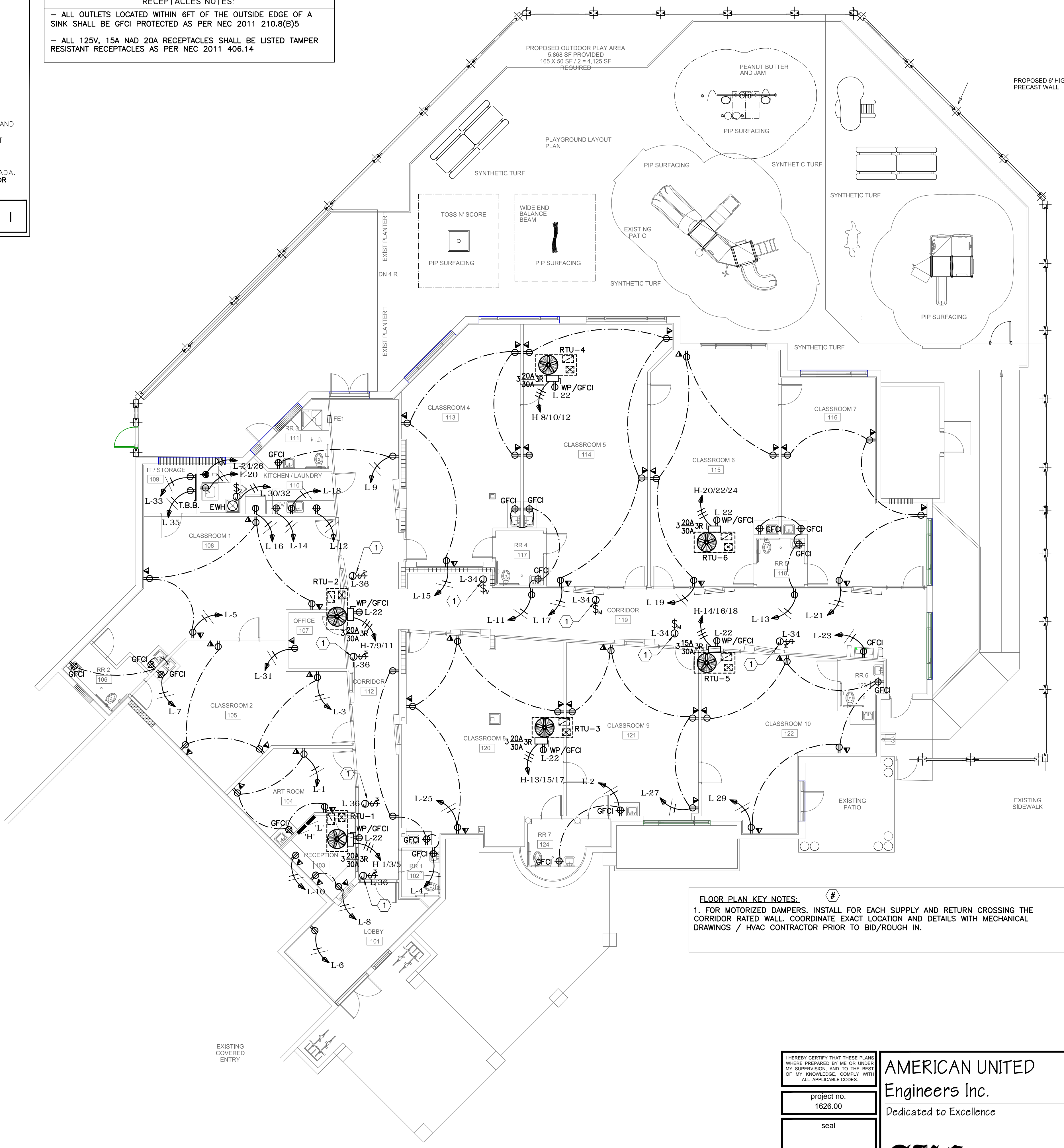


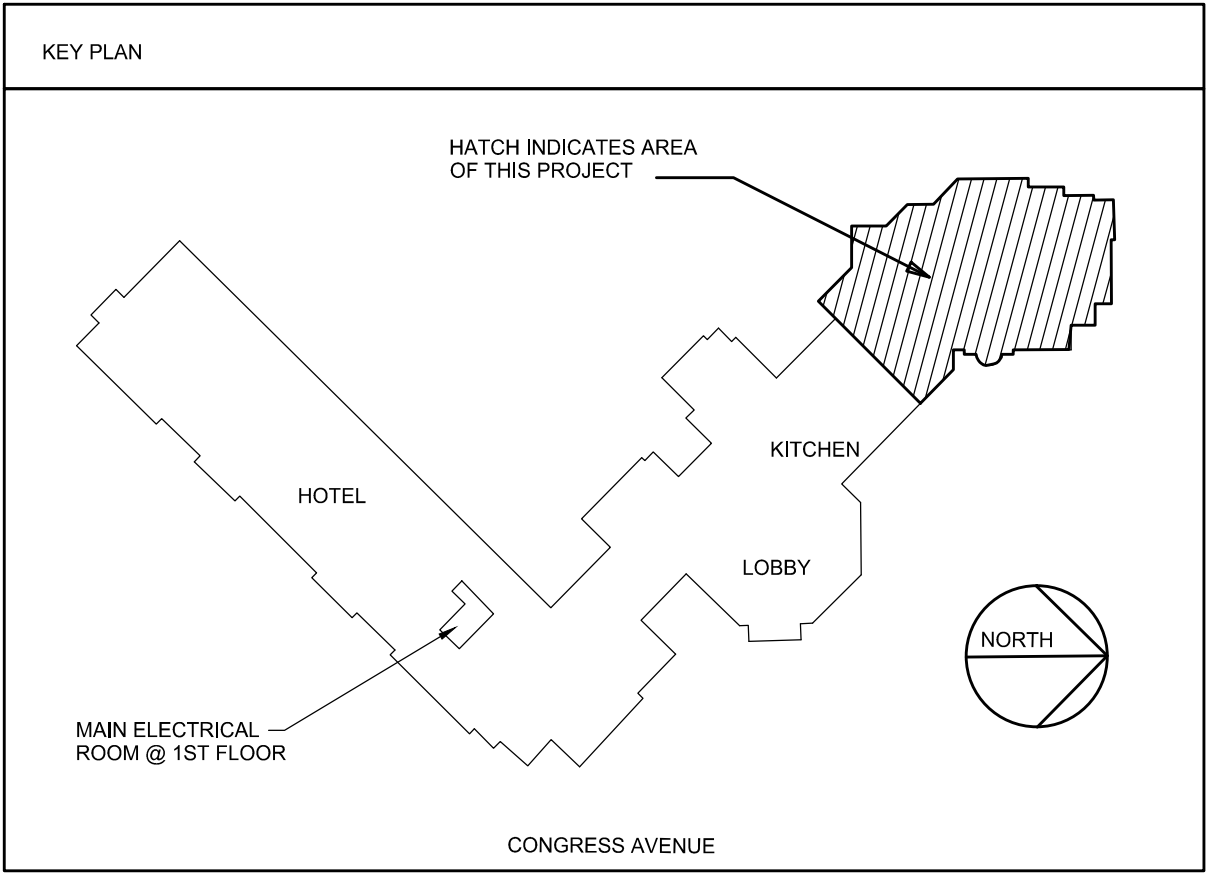
POWER LEGEND	
SYMBOL	DESCRIPTION
⊕	SIMPLEX OUTLET (20A, +48" O.C. FROM A.F.F, U.N.D)
⊕	DUPLEX RECEPT. (20A, +18" O.C. FROM A.F.F, U.N.D)
⊕	DUPLEX RECEPTACLE INSTALLED ABOVE COUNTER (20A, +6" O.C., ABOVE COUNTER, U.N.D)
⊕	QUAD RECEPT. (20A, +18" O.C. FROM A.F.F, U.N.D)
⊕	SWITCH DUPLEX (20A, +18" O.C. FROM A.F.F, U.N.D)
⊕	240 V. RECEPT. (50A, +18" O.C. FROM A.F.F, U.N.D)
⊕	SPECIAL PURPOSE RECEPT. (30A, +18" O.C. A.F.F, U.N.D)
⊕	JUNCTION BOX (4X4" GALVANIZED STEEL, 18", U.N.D)
⊕	FLOOR MTD. DUPLEX W/ PHONE/DATA (20A, U.N.D) IN SEPARATE RACEWAYS
⊕	HORIZONTAL PLUGMOLD @ DESK HGT. (ABOVE DECK) W/ PLUGS @ 6" O.C.
⊕	DATA/TELEPHONE OUTLET (+18" O.C. A.F.F, U.N.D) HATCH AREA INDICATES PHONE PROVIDE SEPARATE PULL STRING FOR EACH FUNCTION
⊕	CATV, CABLE BOX, SATELLITE BOX CONNECTION OUTLET
⊕	HP RATED DISCONNECT (+60" O.C. A.F.F, U.N.D) NEMA 3R FOR EXTERIOR AND NEMA 1 FOR INTERIOR.
⊕	PANELBOARD (+60" A.F.F O.C OF PNL, U.N.D)
⊕	ELECTRICAL METER (+60" A.F.F O.C OF MTR, U.N.D)
⊕	PHASE INDICATOR
⊕	NEUTRAL INDICATOR
⊕	ISOLATED GND.
⊕	FUSE SIZE
⊕	FRAME SIZE
⊕	NUMBER OF POLES
⊕	WIRE IN FREE AIR SUPPORTED TO BLDG. STRUCTURE



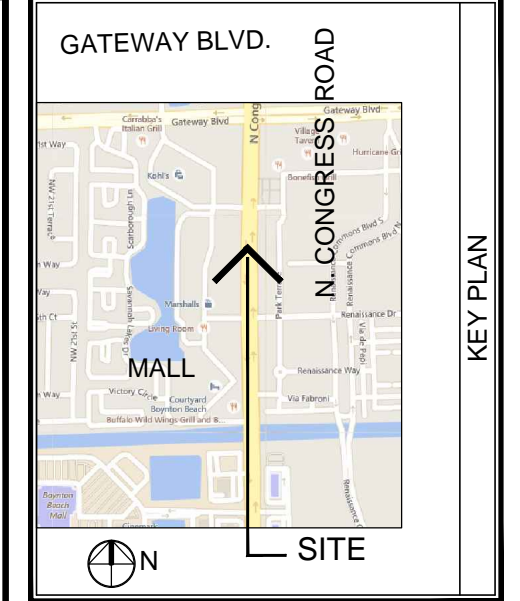
RECEPTACLES NOTES:
 - ALL OUTLETS LOCATED WITHIN 6FT OF THE OUTSIDE EDGE OF A SINK SHALL BE GFCI PROTECTED AS PER NEC 2011 210.8(B)5
 - ALL 125V, 15A NAD 20A RECEPTACLES SHALL BE LISTED TAMPER RESISTANT RECEPTACLES AS PER NEC 2011 406.14



FLOOR PLAN KEY NOTES:
 1. FOR MOTORIZED DAMPERS, INSTALL FOR EACH SUPPLY AND RETURN CROSSING THE CORRIDOR RATED WALL - COORDINATE EXACT LOCATION AND DETAILS WITH MECHANICAL DRAWINGS / HVAC CONTRACTOR PRIOR TO BID/ROUGH IN.



1ST FLOOR POWER PLN
 scale: 1/8" = 1'-0"



MARK	DESCRIPTION	DATE

MARC WIENER, AIA
ARCHITECTURE/PLANNING
 AR # 0010416
 851 SOUTH FEDERAL HIGHWAY
 SUITE 803
 BOCA RATON, FLORIDA 33432
 561-750-4111 FAX: 561-750-5098

SOUTH FLORIDA SCHOOLS, LLC
 1820 SW 3RD AVENUE - STE 202
 MIAMI, FLORIDA 33129
 OFFICE: 904.596.3200
 FAX: 904.596.8550

KLA CHILDCARE
INTERIOR IMPROVEMENT
 1601 NORTH CONGRESS AVENUE
 BOYNTON BEACH, FLORIDA 33330

I HEREBY CERTIFY THAT THESE PLANS WERE PREPARED BY ME OR UNDER MY SUPERVISION AND TO THE BEST OF MY KNOWLEDGE COMPLY WITH ALL APPLICABLE CODES.
 project no. 1626.00
 seal
 Dan Pienaru, PE
 LICENSE No. 73022
 STATE OF FLORIDA
 date

AMERICAN UNITED Engineers Inc.
 Dedicated to Excellence
AUE
 4508 SW 24th Street
 Fort Lauderdale, FL 33317
 Tel: (954) 471-8657
 american.eng@comcast.net
 CA # 29803

JOB NUMBER	15118
SCALE	AS NOTED
PROJECT DATE	16.03.22
ISSUE DATE	
BID DATE	
DRAWN BY	DP
CHECKED BY	DP
DISCIPLINE	ELECTRICAL
PLAN TYPE	
SHEET NUMBER:	E-1