

REVISIONS	BY

GREASE INTERCEPTOR SIZING CALCULATION

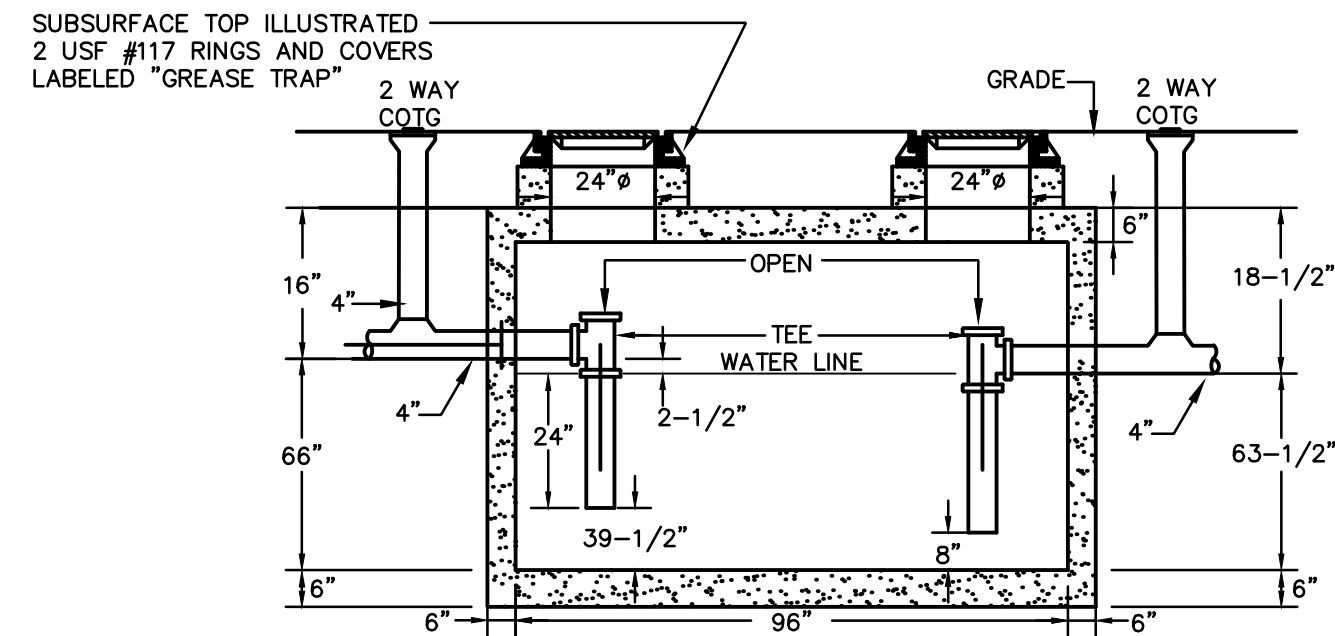
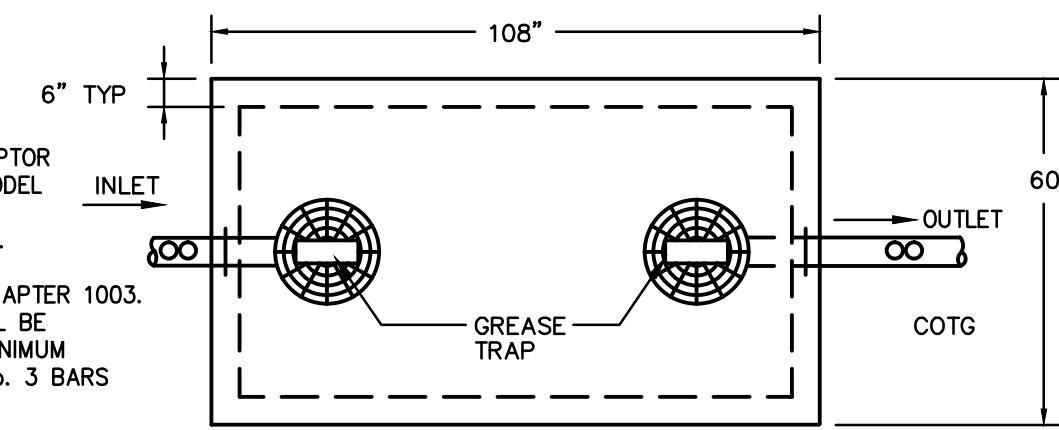
SIZING FORMULA FOR RESTAURANTS AS PER FBC- PLUMBING TABLE 1003.5.1
 $(S) \times (GS) \times (HR/12) \times (LF) = \text{EFFECTIVE CAPACITY OF GREASE INTERCEPTOR IN GALLONS WHERE,}$

WHERE,
 S = NUMBER OF SEATS IN DINING AREA
 GS = GALLONS OF WASTE WATER PER SEAT
 (USE 25 GALLONS FOR RESTAURANT WITH CHINA DISHES AND/OR AUTOMATIC DISHWASHER)
 (USE 10 GALLONS FOR RESTAURANT WITH PAPER OR BASKETS AND NO DISHWASHER)
 HR = NUMBER OF HOURS RESTAURANT IS OPEN
 LF = LOADING FACTOR
 (USE 2.00 INTERSTATE HIGHWAY; 1.50 OTHER FREEWAYS; 1.25 RECREATIONAL AREA;
 1.00 MAIN HIGHWAY; 0.75 OTHER HIGHWAY)

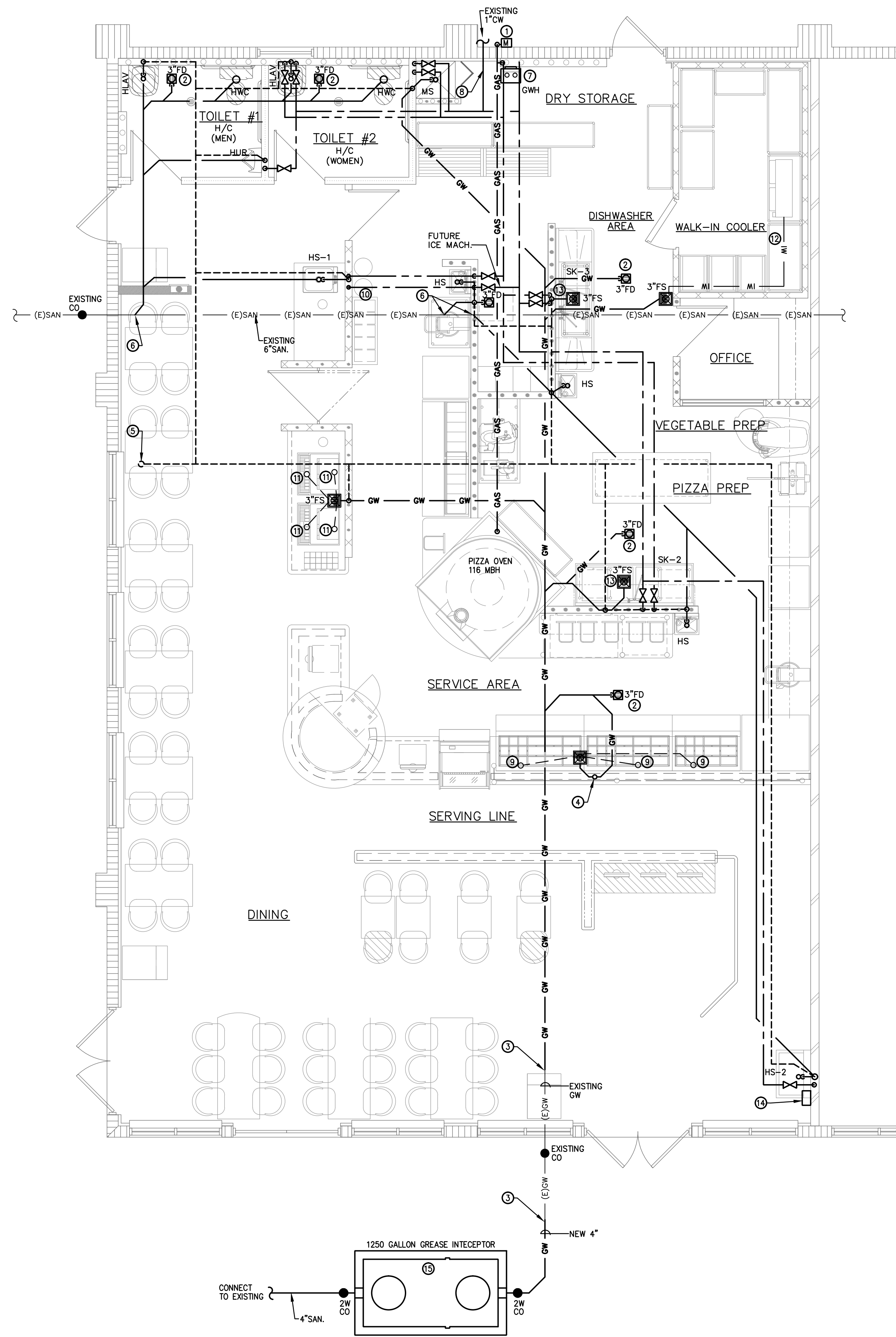
CALCULATION:
 S = 52 GS = 25 HR = 10 LF = 1.00
 $(52) \times (25) \times (10/12) \times (1.00) = 1,079 \text{ GALLONS}$
TOTAL CAPACITY PROVIDED = 1,250 GALLONS

NOTE:

1. PRECAST GREASE INTERCEPTOR BY BROOKS PRODUCTS MODEL GI-1250 OR EQUAL. 1250 GALLONS LIQUID CAPACITY. INTERCEPTOR SHALL MEET REQUIREMENTS OF FPC CHAPTER 1003. PRECAST CONCRETE SHALL BE 4,500 PSI IN 27 DAYS. MINIMUM REINFORCING SHALL BE No. 3 BARS 6" ON CENTER.



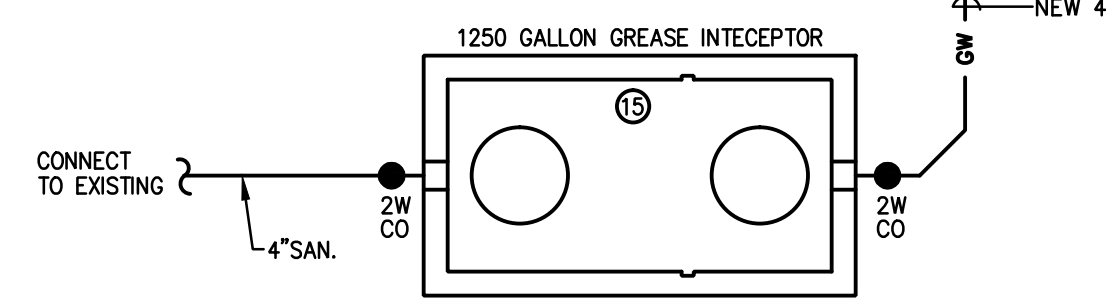
1250 GALLON GREASE INTERCEPTOR DETAIL
N.T.S.



PLAN KEY NOTES

1. NEW NATURAL GAS METER AND LOW PRESSURE REGULATOR. TOTAL LOAD: 316 MBH.
2. PROVIDE A 1/2" TRAP PRIMER LINE UNDERGROUND. ROUTE TO NEAREST SINK/LAV.
3. CONNECT TO EXISTING GREASE WASTE LINE. VERIFY EXACT LOCATION, SIZE AND INVERT IN THE FIELD PRIOR TO START OF WORK.
4. PROVIDE 1-1/2" STUDDOR VENT IN HALF-WALL SPACE. PROVIDE A LOUVERED ACCESS PANEL.
5. CONNECT NEW 2" VENT LINE TO EXISTING. VERIFY EXACT LOCATION IN THE FIELD PRIOR TO START OF WORK.
6. CONNECT TO EXISTING SANITARY LINE. VERIFY EXACT LOCATION, SIZE AND INVERT IN THE FIELD PRIOR TO START OF WORK.
7. TANKLESS WATER HEATER MOUNTED ON WALL. ROUTE CONCENTRIC VENTING UP THRU THE ROOF. PROVIDE A HORIZONTAL OFFSET SO ROOF PENETRATION IS 3 FEET AWAY FROM PARAPET. INSTALLATION SHALL BE IN ACCORDANCE WITH MANUFACTURER'S REQUIREMENTS.
8. CONNECT TO EXISTING WATER LINE. VERIFY EXACT LOCATION AND SIZE IN THE FIELD PRIOR TO START OF WORK.
9. ROUTE 1" INDIRECT WASTE LINE FROM COLD PAN TO FLOOR SINK. PROVIDE AN AIR GAP. VERIFY INDIRECT WASTE SIZE WITH EQUIPMENT CONNECTION.
10. PROVIDE A 1/2" INLINE BACKFLOW PREVENTOR AND WATER FILTER PRIOR TO CONNECTION TO SODA EQUIPMENT.
11. ROUTE 3/4" INDIRECT WASTE LINE FROM SODA MACHINE TO FLOOR SINK. PROVIDE AN AIR GAP.
12. ROUTE 3/4" INDIRECT WASTE LINE FROM EVAPORATOR COIL TO FLOOR SINK. PROVIDE AN AIR GAP. VERIFY INDIRECT WASTE SIZE WITH EQUIPMENT CONNECTION.
13. ROUTE 1-1/2" INDIRECT WASTE LINE FROM SINK TO FLOOR SINK. PROVIDE AN AIR GAP.
14. ROUTE 1-1/2" INDIRECT WASTE LINE FROM SINK TO FLOOR SINK. PROVIDE AN AIR GAP.
15. ELECTRIC TANKLESS WATER HEATER MOUNTED ON WALL HIGH AT CEILING LEVEL AS PER DETAIL.
16. EXACT LOCATION SHALL BE COORDINATED IN THE SITE.

PLUMBING FLOOR PLAN
1/4" = 1'-0"



MICHAEL A. BASSFORD
2107 N.E. 17TH AVENUE
WILTON MANORS, FL 33305
PHONE: (954) 398-0700
Email: mbassford@aol.com
MICHAEL A. BASSFORD
FLORIDA LICENSE #57390

KUOPPALA & ASSOCIATES, P.A.
ROBERT F. KUOPPALA ARCHITECTS
FLORIDA ARCHITECT #0481 LICENSE #AAC-001658
925 SOUTH MILITARY TRAIL, SUITE D-10 (561) 692-1909-0FF.
WEST PALM BEACH, FLORIDA 33415 (561) 692-1975-FAX.

INTERIOR IMPROVEMENTS
FIRE UP PIZZA
8170 OKEECHOBEE BLVD. - SUITES 1 & 2
SEDONA COMMONS - BUILDING #7
WEST PALM BEACH, FLORIDA

DRAWN	MB
CHECKED	MB
DATE	APRIL 26, 2016
SCALE	AS NOTED
COMM. NO.	16-07
SHEET	

P-1