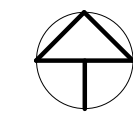
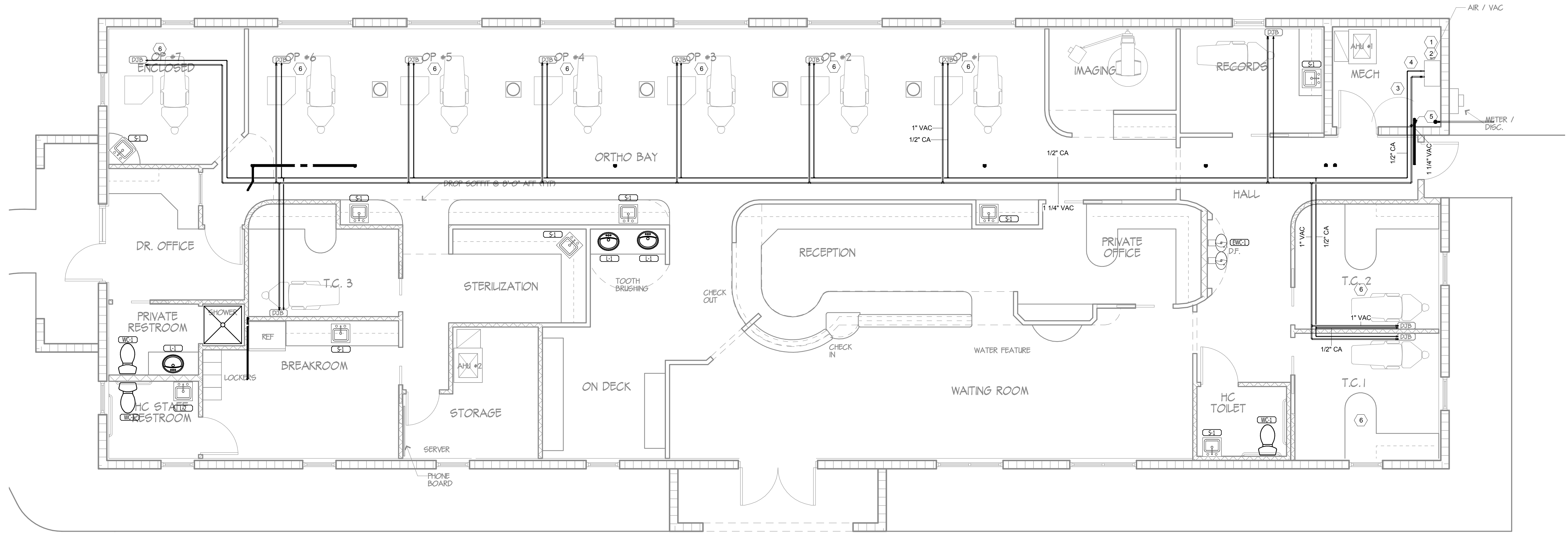


KEYNOTES

- 1 CONTRACTOR TO FURNISH AND INSTALL 1/2" COPPER WATER PIPE, TERMINATE IN 1/2" F.P.T. FOR VACUUM PUMP.
- 2 2" PVC FOR AIR COMPRESSOR INTAKE UP THROUGH ROOF TO GOOSENECK INTAKE MAINTAIN 10 FEET CLEARANCE FROM EXHAUST VENTS
- 3 VACUUM PUMP DISCHARGE PIPE SHALL ROUTE OVER SANITARY SEWER SYSTEM
- 4 1/2" COPPER COMPRESSED AIR LINE SHALL TERMINATE IN 1/4" F.P.T.
- 5 2" PVC FOR VACUUM VENT THROUGH ROOF TO GOOSENECK VENT
- 6 ROUTE VACUUM AND COMPRESSED AIR UNDER SLAB TO UTILITY JUNCTION BOX.

GENERAL NOTES

1. VACUUM LINES SHALL BE AS SCHEDULE 40 PVC WITH 5/8" STUB OUTS AT EQUIPMENT.
2. ALL VACUUM LINES SHALL BE INSTALLED UNDER SLAB UNLESS OTHERWISE APPROVED BY TENANT OR REQUIRED BY PERMITTING.
3. AIR COMPRESSOR AND VACUUM PUMP ARE SUPPLIED BY OWNER, INSTALLED BY PLUMBING CONTRACTOR AND WIRED BY ELECTRICAL CONTRACTOR.
4. COMPRESSED AIR LINES SHALL BE 1/2" COPPER WITH 3/8" COMPRESSION FITTINGS.
5. CONTRACTOR SHALL COORDINATE ALL ROUGH IN LOCATIONS WITH EQUIPMENT SUPPLIER AND VERIFY OUTLET SIZES PRIOR TO CONSTRUCTION.



Compressed Air/Vacuum Floor Plan
1/4" = 1'-0"

PROPOSED ORTHODONTISTS OFFICE FOR:

DR. VAKANI

FLORIDA

EDGARCE ST., PORT ST. LUCIE,

JAMES T. WANSLEY,
 P.E.
 Florida License #60343

REVISIONS	
REVISION 1	2/4/16

JOB NO.	11-523
DATE	01.28.16
DRAWN BY	LTB
CHECKED BY	JTW

SHEET
P-3
 OF