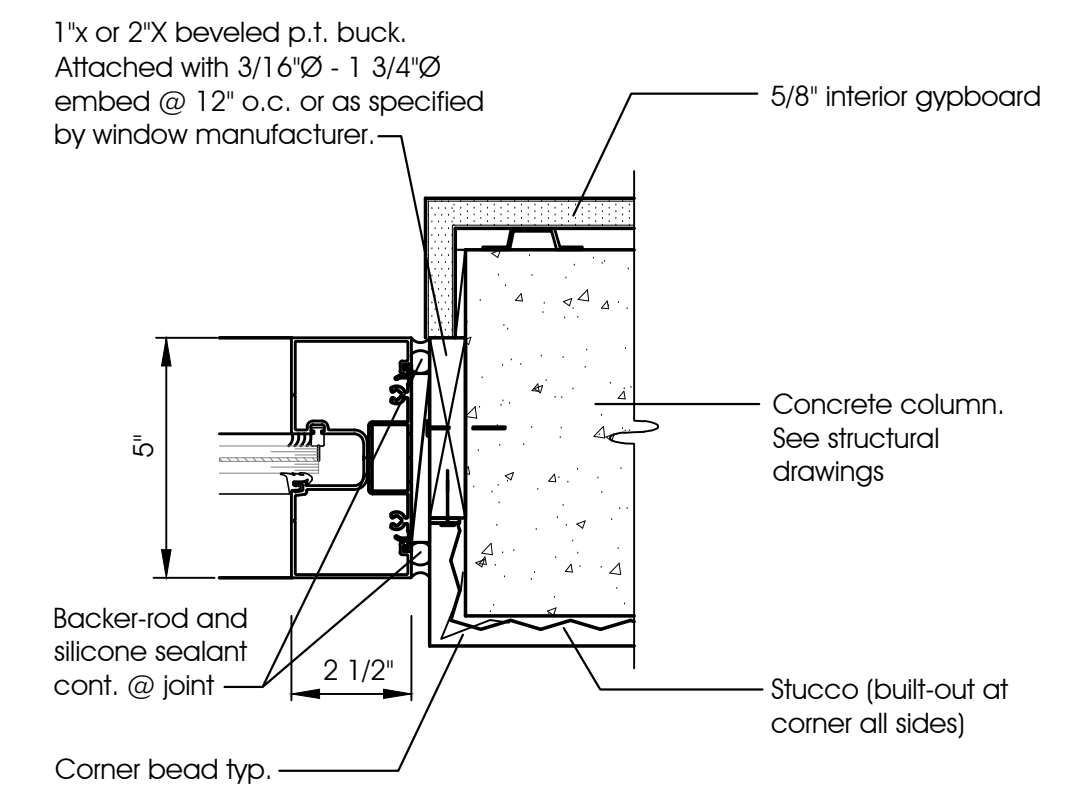
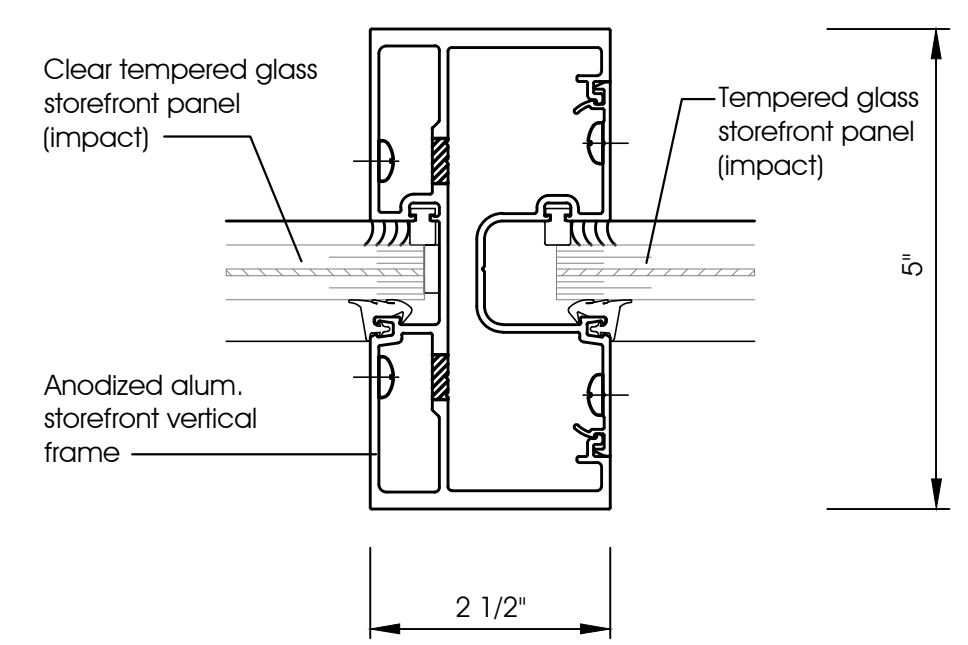


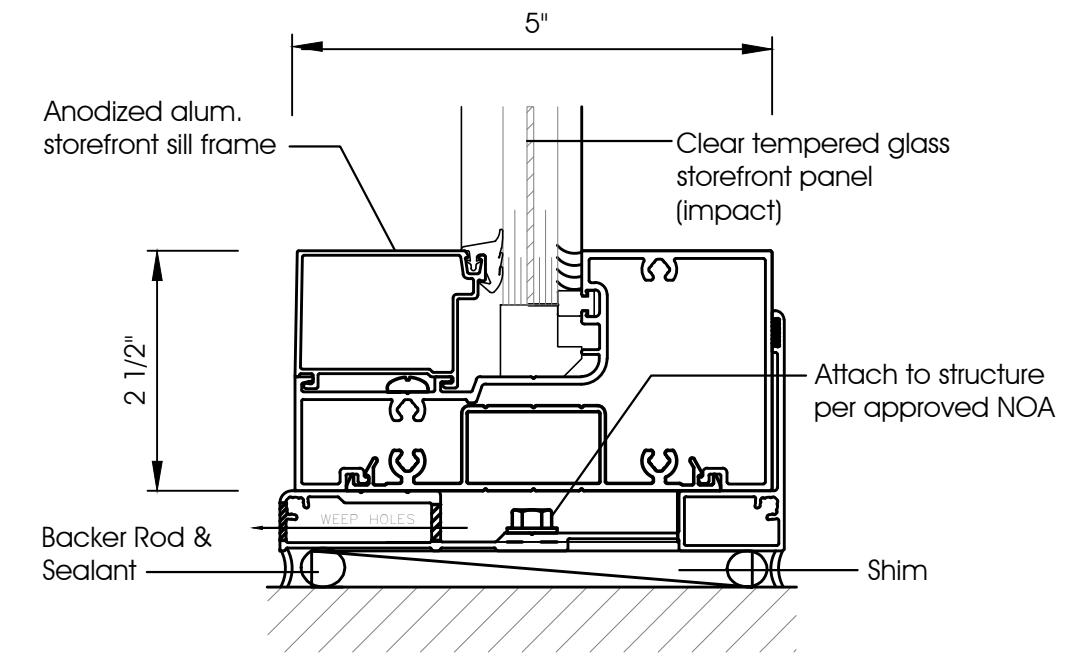
1 Storefront Head Detail 3" = 1"



2 Storefront Jamb Detail 3" = 1"



3 Storefront Intermediate Vertical Dtl. 3" = 1"



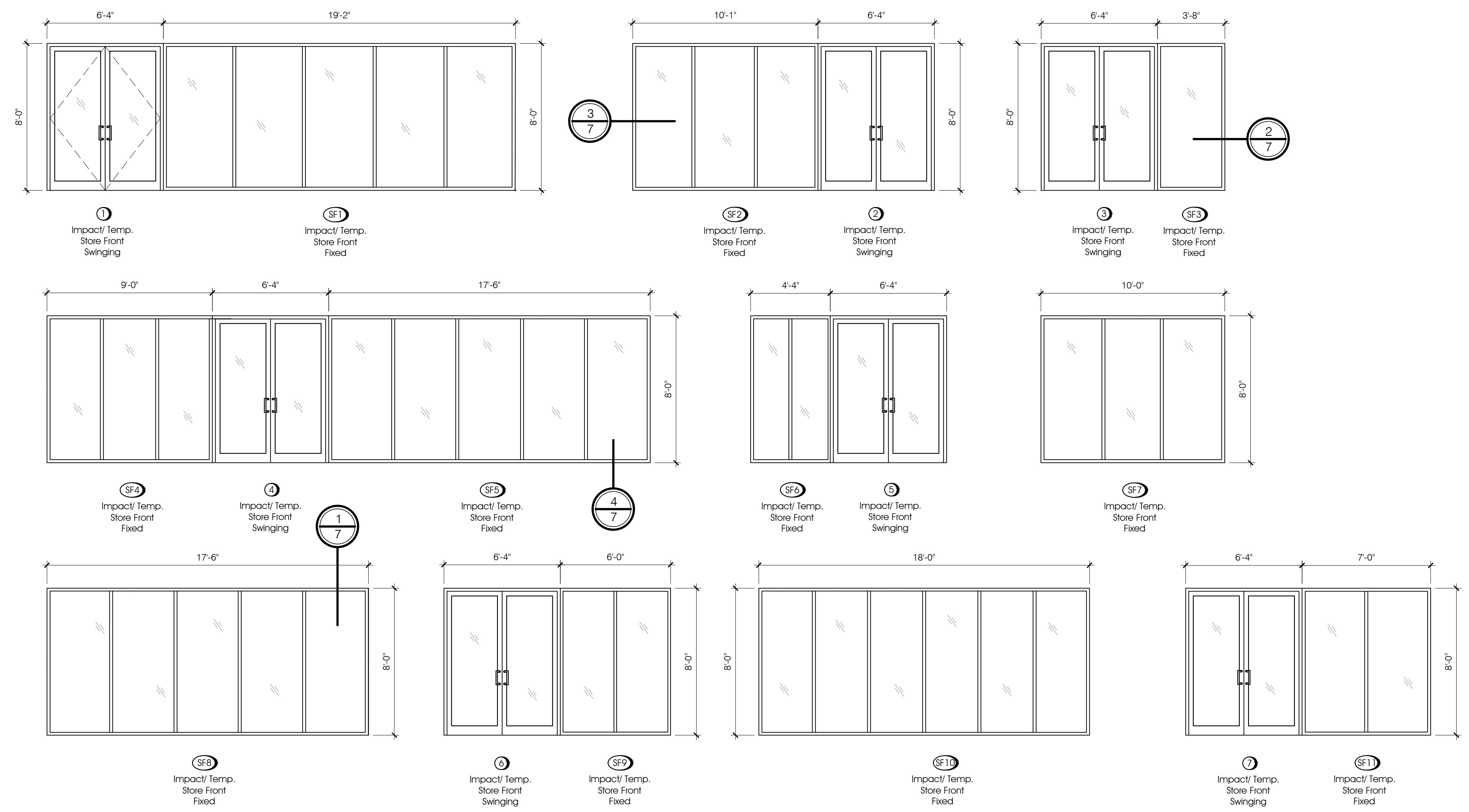
4 Storefront Sill Detail 3" = 1"

DOOR SCHEDULE										
MARK	SIZE	THK.	TYPE	DOOR MAT.	FINISH	FRAME MAT.	FINISH	UL RATINGS	Wind Pressure	REMARKS
1	(2)3080	1-3/4"	STOREFRONT	ALUM.	ANOD.	ALUM.	ANOD.			NOA, Panic hardware
2	(2)3080	1-3/4"	STOREFRONT	ALUM.	ANOD.	ALUM.	ANOD.			NOA, Panic hardware
3	(2)3080	1-3/4"	STOREFRONT	ALUM.	ANOD.	ALUM.	ANOD.			NOA, Panic hardware
4	(2)3080	1-3/4"	STOREFRONT	ALUM.	ANOD.	ALUM.	ANOD.			NOA, Panic hardware
5	(2)3080	1-3/4"	STOREFRONT	ALUM.	ANOD.	ALUM.	ANOD.			NOA, Panic hardware
6	(2)3080	1-3/4"	STOREFRONT	ALUM.	ANOD.	ALUM.	ANOD.			NOA, Panic hardware
7	(2)3080	1-3/4"	STOREFRONT	ALUM.	ANOD.	ALUM.	ANOD.			NOA, Panic hardware
8	(2)3080	1-3/4"	STOREFRONT	ALUM.	ANOD.	ALUM.	ANOD.			NOA, Panic hardware

Note:  
 1. All exterior doors shall have current Dade County Product Approval and Notice of Acceptance.  
 2. All closer & hardware to comply with Florida Accessibility Code.  
 3. Contractor to verify masonry / rough openings for all windows and doors and adjust columns as required.

**BUCK SCHEDULE**  
 Impact: 1x4 P.T. buck  
 Wood frame doors: 2x4 P.T. buck  
 Metal frame doors: 1x4 P.T. buck

**NOA:**  
 DESIGNATES METRO DADE CO. NOTICE OF ACCEPTANCE REQUIRED.



STOREFRONT SCHEDULE									
MARK	SIZE	TYPE	GL.TINT	FRAME	COLOR	NOA	Top of Window (Ref 0'-0")	Sill Height	REMARKS
SF1	19'-2" x 8'-0"	STOREFRONT	CLEAR	ALUMINIUM	ANODIZED	YES	+8'-0"	+0'-0"	
SF2	10'-1" x 8'-0"	STOREFRONT	CLEAR	ALUMINIUM	ANODIZED	YES	+8'-0"	+0'-0"	
SF3	3'-8" x 8'-0"	STOREFRONT	CLEAR	ALUMINIUM	ANODIZED	YES	+8'-0"	+0'-0"	
SF4	9'-0" x 8'-0"	STOREFRONT	CLEAR	ALUMINIUM	ANODIZED	YES	+8'-0"	+0'-0"	
SF5	17'-6" x 8'-0"	STOREFRONT	CLEAR	ALUMINIUM	ANODIZED	YES	+8'-0"	+0'-0"	
SF6	4'-4" x 8'-0"	STOREFRONT	CLEAR	ALUMINIUM	ANODIZED	YES	+8'-0"	+0'-0"	
SF7	10'-0" x 8'-0"	STOREFRONT	CLEAR	ALUMINIUM	ANODIZED	YES	+8'-0"	+0'-0"	
SF8	17'-6" x 8'-0"	STOREFRONT	CLEAR	ALUMINIUM	ANODIZED	YES	+8'-0"	+0'-0"	
SF9	6'-0" x 8'-0"	STOREFRONT	CLEAR	ALUMINIUM	ANODIZED	YES	+8'-0"	+0'-0"	
SF10	18'-0" x 8'-0"	STOREFRONT	CLEAR	ALUMINIUM	ANODIZED	YES	+8'-0"	+0'-0"	
SF11	7'-0" x 8'-0"	STOREFRONT	CLEAR	ALUMINIUM	ANODIZED	YES	+8'-0"	+0'-0"	
SF12	18'-4" x 8'-0"	STOREFRONT	CLEAR	ALUMINIUM	ANODIZED	YES	+8'-0"	+0'-0"	

Exterior Storefront/ Window Frames to be Anodized Aluminum Clear finish. Submit sample

