

CODE
 ■ FLORIDA BLDG CODE 2014 W/ SUPPLEMENTS
 ■ FLORIDA EXIST. BLDG CODE 2014
 ■ FLORIDA FIRE PREV CODE 2012 5TH EDITION
 ■ NEC 2011

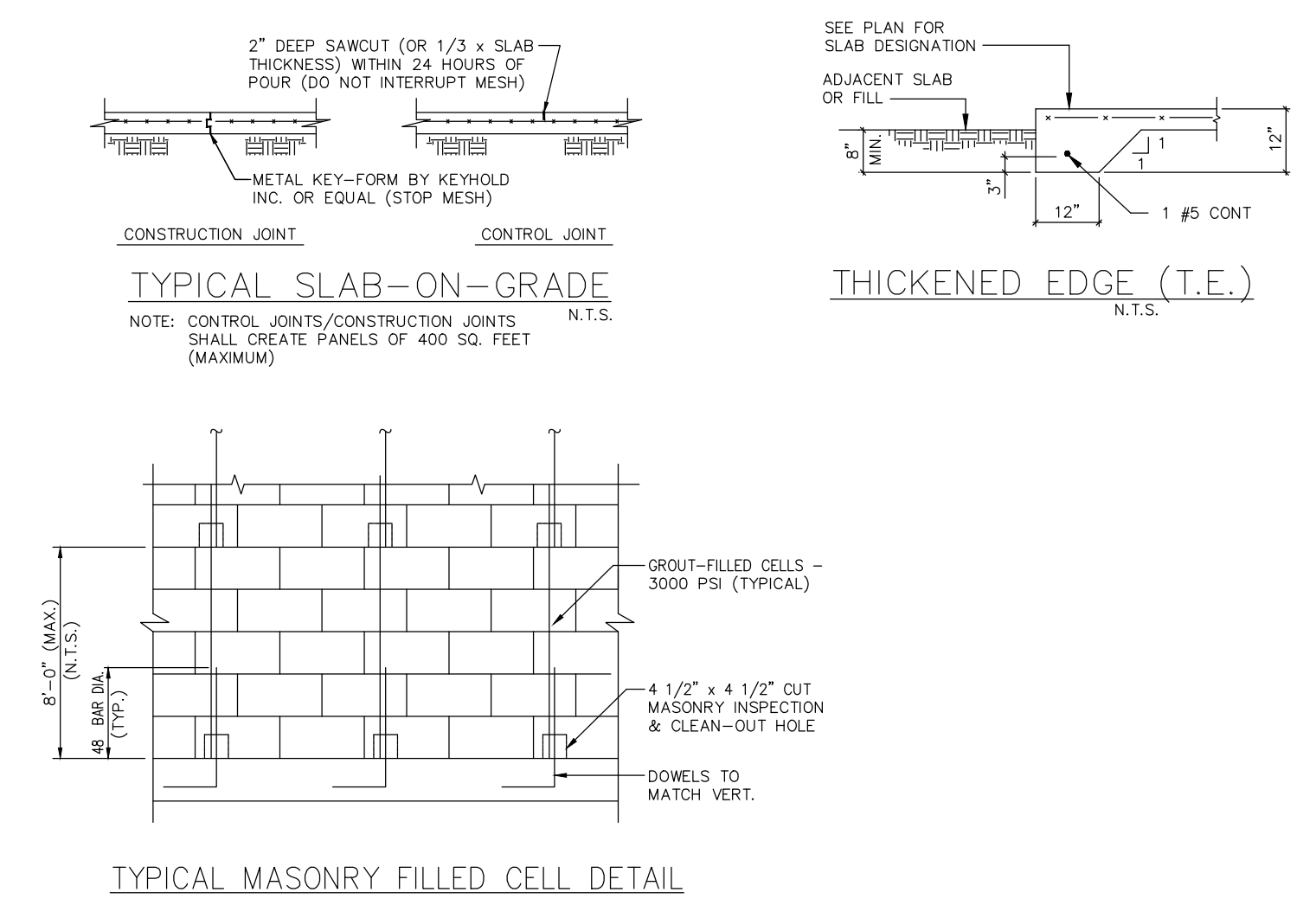
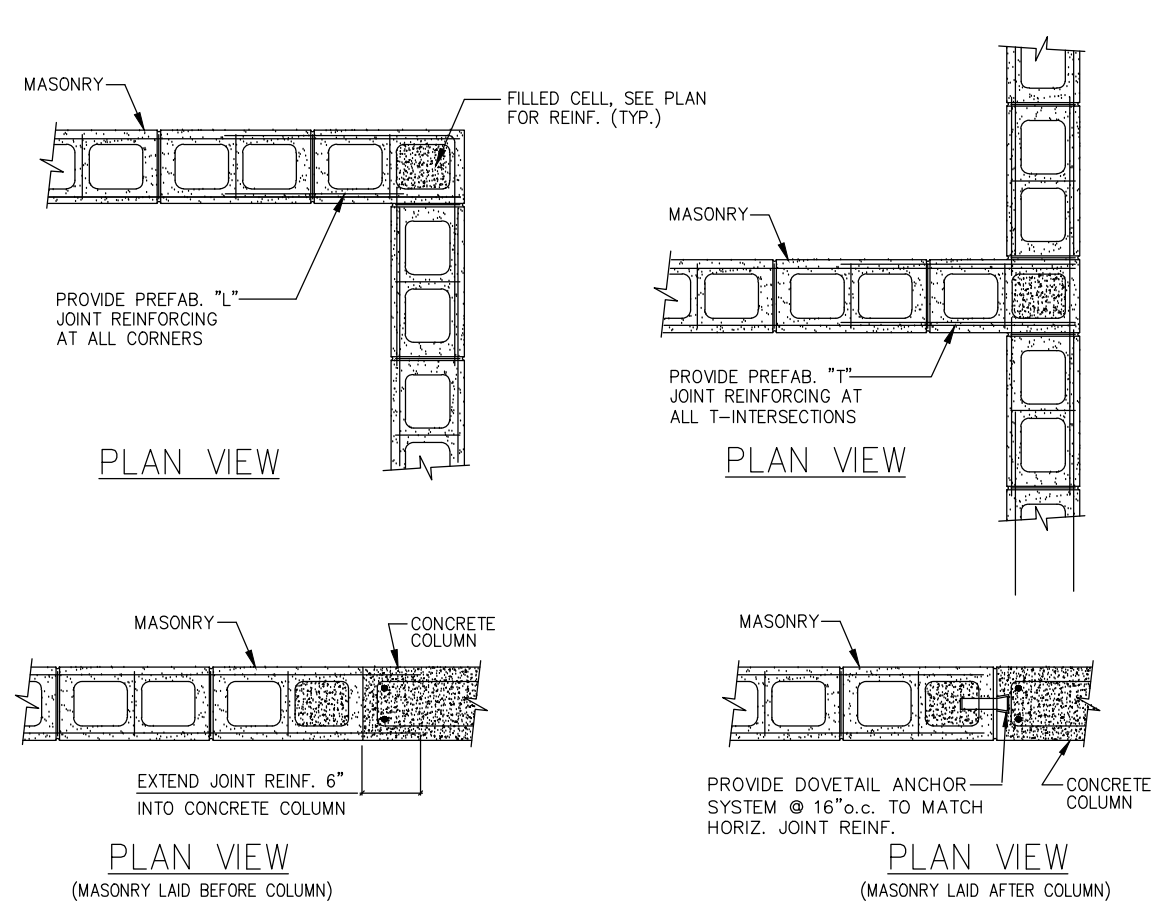
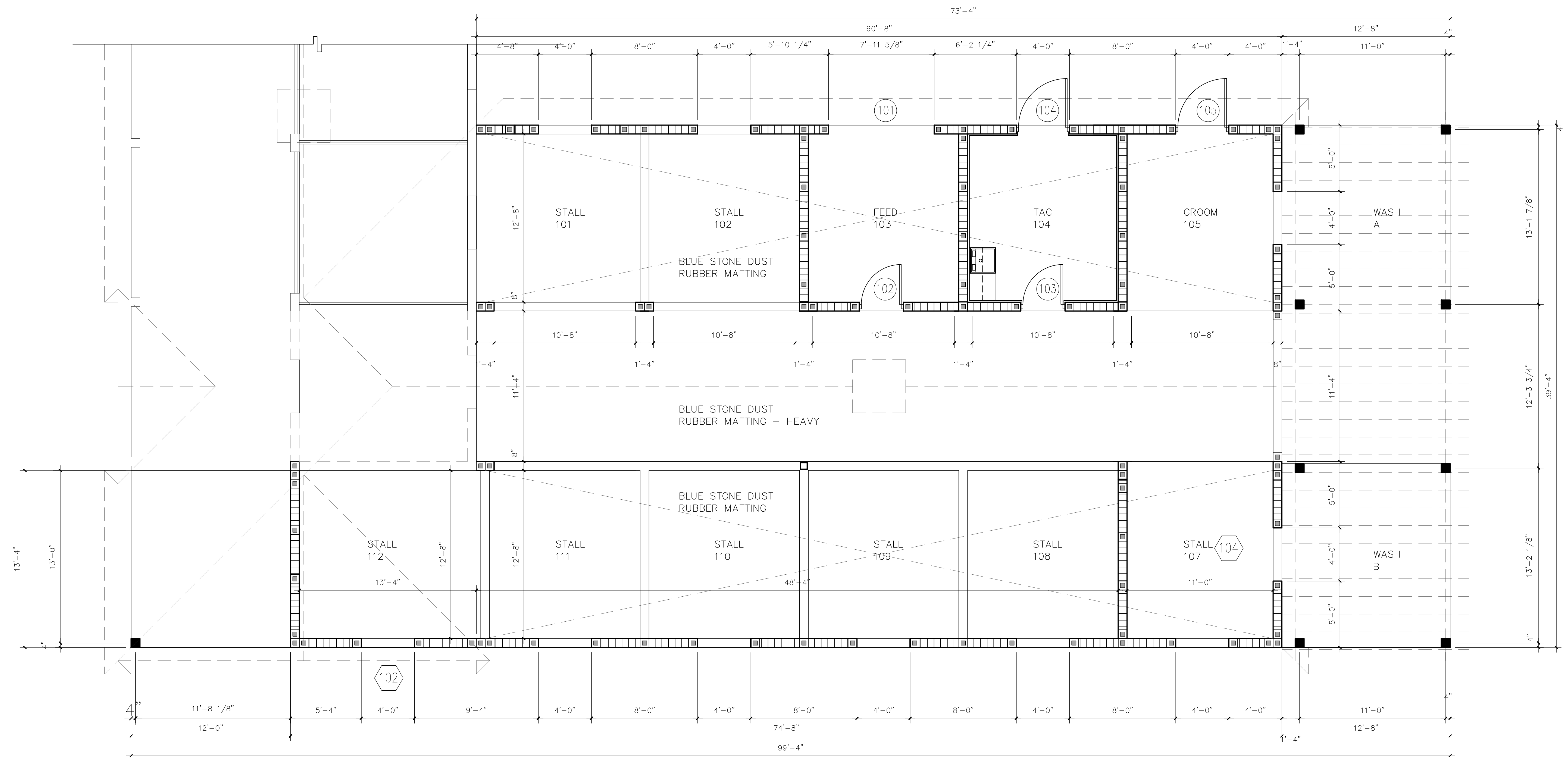
STABLE EXPANSION
 13460 IMPERIAL POINT LANE
 WELLINGTON, FL

Revisions:

ALL IDEAS, DESIGN ARRANGEMENTS AND PLANS INDICATED OR REPRESENTED BY THIS DRAWING ARE OWNED BY RICHARD BARNES AND THE PROPERTY OF THIS OFFICE AND WERE CREATED, EVALUATED AND DEVELOPED FOR USE ON, AND IN CONNECTION WITH THE SPECIFIC PROJECT. NONE OF SUCH IDEAS, DESIGN, AND ARRANGEMENTS OR PLANS SHALL BE USED BY OR OCCASION TO ANY PERSON, FIRM OR CORPORATION FOR ANY PURPOSE WHATSOEVER WITHOUT WRITTEN PERMISSION OF RICHARD BARNES.
 WRITTEN DIMENSIONS ON THESE DRAWINGS SHALL HAVE PRECEDENCE OVER SCALE DIMENSIONS.
 CONTRACTOR SHALL VERIFY AND BE RESPONSIBLE FOR ALL DIMENSIONS AND CONDITIONS ON THE JOB AND THIS OFFICE MUST BE NOTIFIED OF ANY VARIATIONS FROM THE DIMENSIONS AND CONDITIONS AS SHOWN ON THESE DRAWINGS.

RICHARD BARNES ARCHITECTURAL DESIGN SERVICES LLC
 1807 E. TER. DR. LAKE WORTH, FL 33460
 (561) 574-1027

DRAWN
 CHECKED
 DATE 4-26-16
 SCALE AS NOTED
 FOR PERMIT
 SHEET
 A3
 OF SHEETS



CONCRETE MASONRY
 CONCRETE MASONRY WORK SHALL BE IN ACCORDANCE WITH FLORIDA BUILDING CODE REQUIREMENTS FOR MASONRY STRUCTURES

CONCRETE MASONRY SHALL HAVE $f'_m = 2000$ PSI MINIMUM

CONCRETE MASONRY UNITS SHALL BE IN CONFORMANCE WITH ASTM C90 GRADE N, TYPE 11. MASONRY UNITS SHALL BE TESTED IN ACCORDANCE WITH ASTM C40 AND SHALL HAVE A MINIMUM COMPRESSIVE STRENGTH OF 2000 PSI MINIMUM BASED ON THE CROSS SECTIONAL AREA.

GROUT SHALL BE IN CONFORMANCE WITH ASTM C476, COARSE TYPE. GROUT SHALL HAVE $f'_c = 2500$ PSI MINIMUM.

MORTAR SHALL BE IN ACCORDANCE WITH ASTM C270, TYPE M OR S.

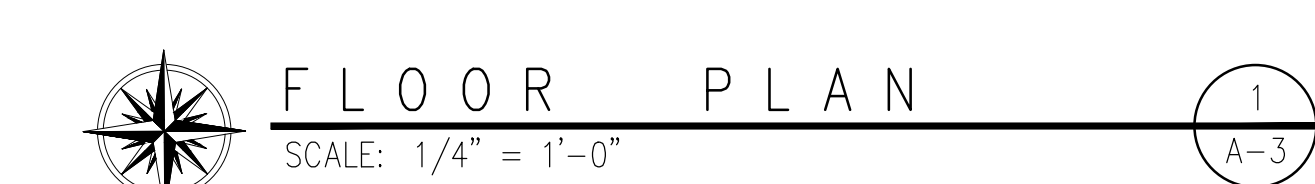
PROVIDE PRECAST LINTELS OVER ALL OPENINGS IN MASONRY CONSTRUCTION UNLESS NOTED OTHERWISE IN PLAN. AND SHALL HAVE 4" MINIMUM BEARING AT EACH END.

PROVIDE CLEAN CUTS FOR ALL GROUTED CONSTRUCTION AND LIMIT MORTAR PROTRUSIONS TO 1/2" MAXIMUM IN GROUT CELLS

ALL MASONRY WALLS SHALL BE CONSTRUCTED WITH 9 GA. LADDER TYPE JOINT REINFORCING SPACED 16" O.C. VERTICALLY. LAP AT CORNERS AND 6" MINIMUM

ALL LINTELS SHALL HAVE A 3/4" INSPECTION UNDER EACH OF THE LINTELS (TO REASSURE CONCRETE FILL)

8"XB" CONCRETE FILLED BLOCK CELLS SHALL A 3/4" INSPECTION MINIMUM EVERY 4' O.C.



- ||||| CONCRETE MASONRY WALL
- INTERIOR NON LOAD BEARING GYPSUM BOARD PARTITION
- ▨ INTERIOR LOAD BEARING GYPSUM BOARD PARTITION
- STEEL COLUMN - SEE STRUCTURAL

FURRING
 WHERE THE INTERIOR OF MASONRY WALLS IS FURRED, SUCH FURRING SHALL BE TREATED AND FIRE STOPPED AS HEREIN REQUIRED AND SHALL BE SECURELY FASTENED TO THE MASONRY WITH NOT LESS THAN ONE CUT NAIL IN ALTERNATE COURSE OF BLOCK.

FIRE STOP FURRED WALLS
 IN CONCEALED SPACES OF STUD WALLS AND PARTITIONS INCLUDING FURRED SPACES AT CEILING AND FLOOR LEVELS TO LIMIT THE MAXIMUM DIMENSION OF ANY CONCEALED SPACE TO 8 FEET. (2438MM)