



SYNALOVSKI ROMANIK SAYE
Architecture • Planning • Interior Design

1800 Eller Drive, Suite 500
Fort Lauderdale, FL 33316
T 954.961.6806
F 954.961.6807
www.synalovskid.com

Manuel Synalovski, AIA
AR 0011628
SEAL

LICENSE NO. AA26001863

VILLAGE AT ATLANTIC SHORES

801 N. FEDERAL HIGHWAY
HALLANDALE BEACH, FL

CLIENT: ATLANTIC VILLAGE 1, LLC.

REV	DATE	DESCRIPTION

DESIGN DELIVERABLE: PERMIT SET
ISSUE DATE: 05-11-16

PROJECT NUMBER: 1177 - 150203

DRAWN BY: JS

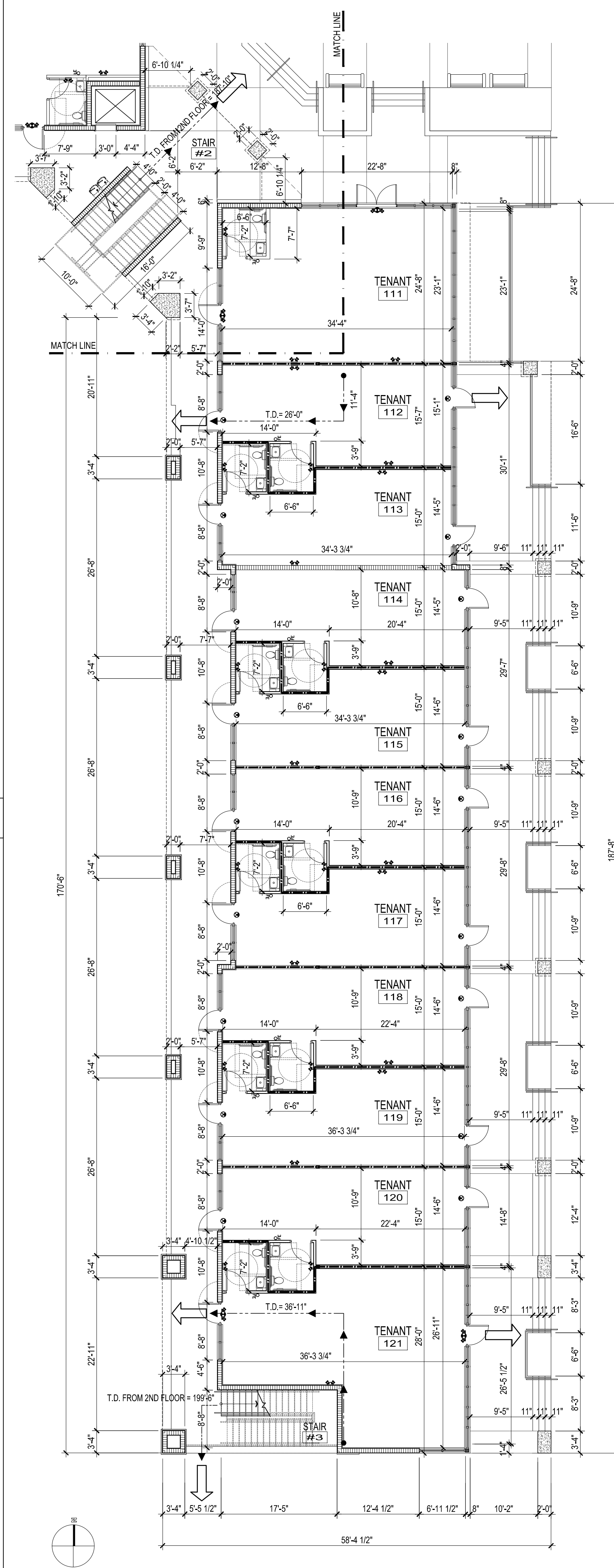
CHECKED BY: MS

Copyright (c) by SYNALOVSKI ROMANIK SAYE, LLC
All Rights Reserved.

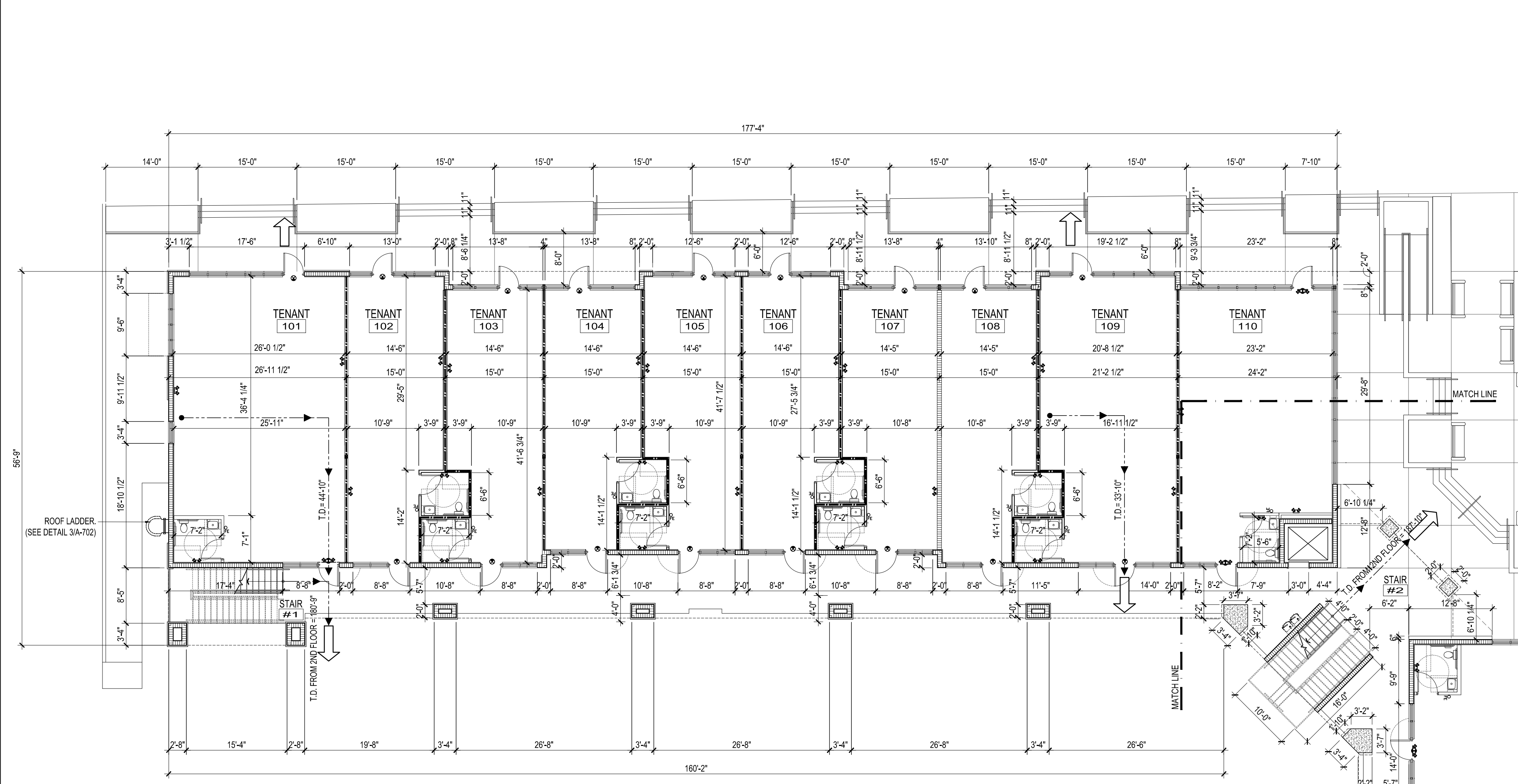
SHEET TITLE:
**FIRST FLOOR
LIFE SAFETY PLAN**

SHEET NUMBER:

LS-101



1 FIRST FLOOR PARTIAL LIFE SAFETY PLAN
SCALE: 3/32"=1'-0"



2 FIRST FLOOR PARTIAL LIFE SAFETY PLAN
SCALE: 3/32"=1'-0"

FIRE EXTINGUISHER LEGEND:

	SURFACE MOUNTED FIRE EXTINGUISHER (MODEL #MPS 5LBS, ABC) MOUNTED AT 48" A.F.F. WITH WALL BRACKET TO TOP OF HANDLE. AND SHALL BE CURRENTLY DATED AND TAGGED BY A LICENSED FIRE EQUIPMENT COMPANY. COMPLY WITH NFPA 10. FURNISH AND INSTALL, AS A MINIMUM, PER EVERY 2,500 S.F. OR 1 PER EVERY TENANT SPACE LESS THAN 2,500 S.F.
--	--

FIRE PARTITION / WALL LEGEND:

	1-HOUR FIRE RATED
	EMERGENCY BATTERY WALL PACK & EXIT LIGHT COMBINATION
	EXIT LIGHT
	PRIMARY EGRESS
	TRAVEL DISTANCE 250 FT. MAXIMUM (NFPA 101, SECTION 36.2.6.2)
	COMMON PATH OF TRAVEL DISTANCE

GENERAL LIFE SAFETY NOTES:

PROVIDE ADDRESS NUMBERS ON MAIN ENTRANCE DOORS AND REAR DOORS. SAID ADDRESS NUMBERS SHALL BE VISIBLE FROM THE STREET FRONTING THE BUILDING. NUMBERS SHALL CONTRAST WITH BACKGROUND AND BE AT LEAST 6" IN HEIGHT PER NFPA 1 SEC. 10.12.1

KNOX KEY BOX (MODEL 3265 SURFACE MOUNT; OR MODEL 3274 RECESS MOUNT) SHALL BE INSTALLED NEAR MAIN ENTRANCE AT +/- 5'-0" HEIGHT.

GENERAL CONTRACTOR SHALL SUBMIT FIRE SPRINKLER AND FIRE ALARM SHOP DRAWINGS WITH APPROVED STAMP BY D.O.R. FOR BUILDING DEPARTMENT APPROVAL PRIOR TO INSTALLATION.

FLOOR SURFACE:
WALKING SURFACES SHALL BE SLIP RESISTANT UNDER FORESEEABLE CONDITIONS. THE WALKING SURFACE OF EACH ELEMENT IN THE MEANS OF EGRESS SHALL BE UNIFORMLY SLIP RESISTANT ALONG THE NATURAL PATH OF TRAVEL.

FLOOR COVERINGS SHALL HAVE CLASS II RATING.

DOOR LANDINGS:
ALL DOOR LANDINGS SHALL BE FLUSH ON BOTH SIDES OF DOOR WITH 1/2" HIGH MAXIMUM THRESHOLD AS PER NFPA 7.2.1.3

FINISHES:
ALL INTERIOR FINISHES SHALL COMPLY WITH THE APPLICABLE CHAPTER(S) AND SECTION(S) OF N.F.P.A. 101 (L.S.C.), 2012 EDITION, CHAPTER 36, SECTION 36.3.3. GENERAL CONTRACTOR TO PROVIDE CUT SHEETS REFLECTING FLAME SPREAD AND SMOKE DEVELOPMENT RATING FOR APPROVAL PRIOR TO INSTALLATION.

CODE INFORMATION

		FBC	REQUIRED/ ALLOWED	PROVIDED/ CLASSIFICATION
1	OCCUPANCY CLASSIFICATION	CHAPTER 3	MERCANTILE	MERCANTILE
2	HEIGHT AND AREA	TABLE 503	40 FT. 1 STORY 9,000 S.F. PER STORY	MAX. HEIGHT: 43'-8" 2 STORY (SEE HEIGHT MODIFICATION ITEM #3) 1ST FLOOR = 14,452 S.F. 2ND FLOOR = 19,954 S.F. (SEE AREA MODIFICATION ITEM #4)
3	HEIGHT MODIFICATIONS	SEC. 504	504.2 SPRINKLER SYSTEM INCREASE = +20 FT. + 1 STORY	3'-8" HEIGHT ADDED + 1 STORY ADDED
4	AREA MODIFICATIONS	SEC. 506	506.3 SPRINKLER SYSTEM INCREASE = 9,000 + (9,000 x 200%) = 27,000 S.F. (PER STORY)	1ST FLOOR = 14,452 S.F. 2ND FLOOR = 19,954 S.F. TOTAL = 34,406 S.F.
5	CONSTRUCTION TYPE	CHAPTER 6		VB
6	OCCUPANT LOAD	TABLE 1004.1.2	MERCANTILE (SEE CALCULATION BELOW)	(SEE CALCULATION BELOW)
7	EGRESS WIDTH PER OCCUPANT SERVED	SEC. 1005.1	STAIRWAYS: 0.3 x 333 = 99.9" OTHER EGRESS COMP: 1ST FLOOR: 0.2 x 482 = 96.4" 2ND FLOOR: 0.2 x 333 = 66.6"	STAIRWAYS: (48") x 3 = 144" OTHER EGRESS COMP: 1ST FLOOR: (36") x 43 = 1,548" 2ND FLOOR: (36") x 21 = 756"
8	EXIT ACCESS TRAVEL DISTANCE	TABLE 1016.1	250' (WITH SPRINKLER SYSTEM)	199'-6" (WORST CASE)
9	COMMON PATH OF EGRESS TRAVEL	FBC 1014.3	100' (WITH SPRINKLER SYSTEM)	51'-10" (WORST CASE)

OCCUPANCY CLASSIFICATION:

PER FLORIDA BUILDING CODE, FIFTH EDITION (2014), CHAPTER 10, TABLE 1004.1.2 AND UNIFORM FIRE CODE, NFPA 101 36.1.7 AND NFPA 101 TABLE 7.3.1.2.

PER CHAPTER 3, FLORIDA BUILDING CODE, FIFTH EDITION (2014), THE PRINCIPAL USE IS MERCANTILE - GROUP "M" - (309.1)
PER CHAPTER 36, N.F.P.A.-101 - NEW MERCANTILE, CLASS B

SPACE	USE	AREA	AREA PER OCCUPANT	S.F. / AREA PER OCCUPANT	OCCUPANTS
1ST FLOOR (MERCANTILE)	MERCANTILE USE	14,452 S.F.	30 GROSS	14,452 / 30	482
2ND FLOOR (MERCANTILE)	MERCANTILE USE	19,954 S.F.	60 GROSS	19,954 / 60	333

CODE ANALYSIS
THE PROJECT IS DESIGNED TO BE IN CONFORMANCE WITH THE FOLLOWING APPLICABLE CODES:

FLORIDA BUILDING CODE (FBC) FIFTH EDITION (2014)
FLORIDA BUILDING CODE (FBC) FIFTH EDITION (2014) PLUMBING
FLORIDA BUILDING CODE (FBC) FIFTH EDITION (2014) MECHANICAL
2008 STANDARD NATIONAL ELECTRICAL CODE (N.E.C)
2014 FLORIDA FIRE PREVENTION CODE (F.F.P.C.) - FIFTH EDITION (EFF. DATE 12/31/14)
NFPA-101, 2012 WITH FLORIDA AMENDMENTS
CITY OF HALLANDALE BEACH ZONING CODE

PER FBC TABLE 601, FIRE-RESISTANCE RATING REQUIREMENTS FOR BUILDING ELEMENTS

BUILDING ELEMENT	TYPE V B	REQUIREMENT
STRUCTURAL FRAME	0 HR.	
BEARING WALLS EXTERIOR	0 HR.	
BEARING WALLS INTERIOR	0 HR.	
NON-BEARING WALLS AND PARTITIONS INTERIOR	0 HR.	
ROOF CONSTRUCTION INCLUDING SUPPORTING BEAMS AND JOISTS	0 HR.	

MINIMUM PLUMBING FIXTURES (FBC PLUMBING 403.1)

	REQUIRED MERCANTILE OCCUPANCY 815 OCCUPANTS (408 MEN / 408 WOMEN)			PROVIDED
	MALE / FEMALE	MALE	FEMALE	
WATER CLOSETS	1 per 500	1	1	42
LAVATORIES	1 per 750	1	1	42
DRINKING FOUNTAIN	1 PER 1,000	1	1	2 (H&O E.W.C.)
SERVICE SINKS				

AS PER 403.2 - EXCEPTION 3. SEPARATE FACILITIES SHALL NOT BE REQUIRED IN MERCANTILE OCCUPANCIES W/ A TOTAL AREA OF 3,000 S.F. OR LESS (EACH TENANT IS PROVIDED WITH A SINGLE BATHROOM).

AS PER 403.1 - f. DRINKING FOUNTAINS ARE NOT REQUIRED FOR AN OCCUPANT LOAD OF 15 OR FEWER.

3 CODE INFORMATION

E:\1177-150203 Atlantic Shores Village\Drawings\LS-101.dwg 5/11/2016 4:58:07 PM