

VILLAGE AT ATLANTIC SHORES
801 N. FEDERAL HIGHWAY
HALLANDALE BEACH, FL
CLIENT: ATLANTIC VILLAGE 1, LLC.

REV DATE DESCRIPTION

DESIGN DELIVERABLE: PERMIT SET
ISSUE DATE: 05-11-16

PROJECT NUMBER: 1177 - 150203

DRAWN BY: JS

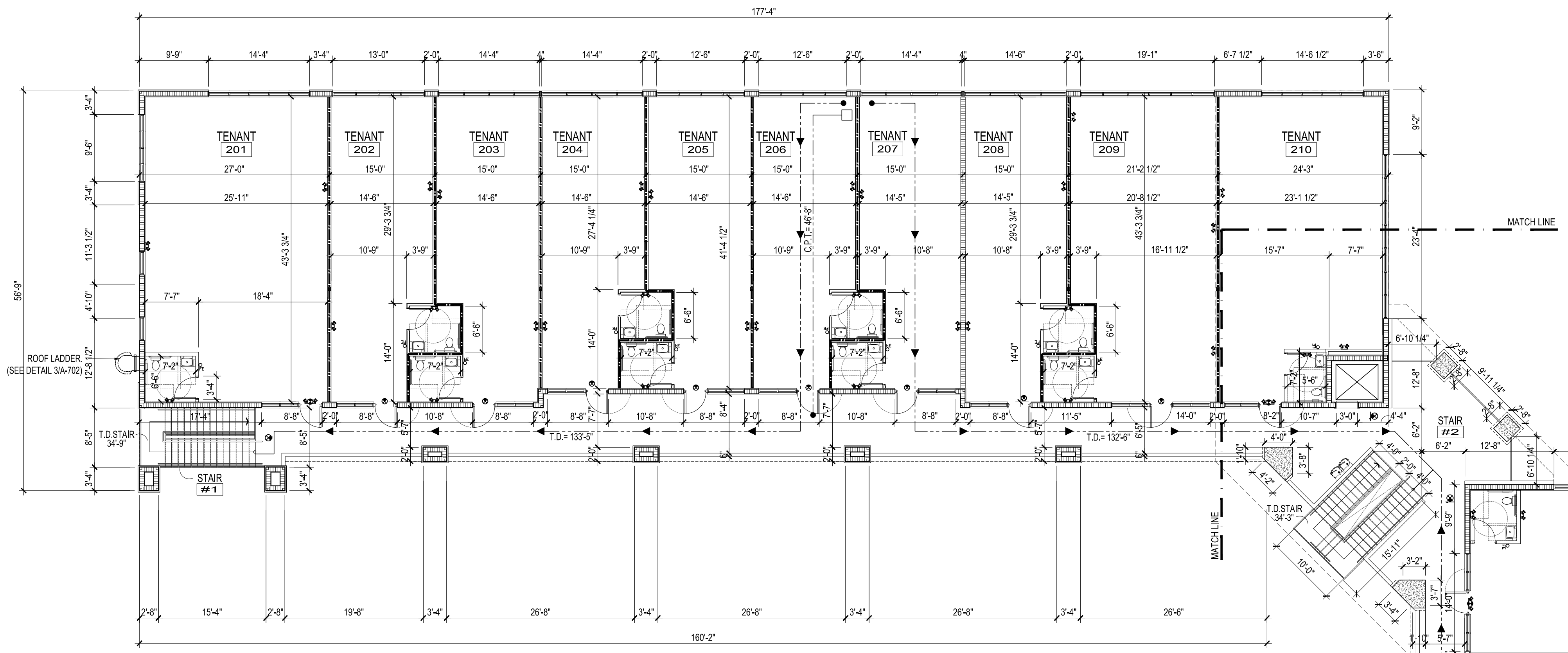
CHECKED BY: MS

Copyright (c) by SYNALOVSKI ROMANIK SAYE, LLC
All Rights Reserved.

SHEET TITLE:
SECOND FLOOR LIFE SAFETY PLAN

SHEET NUMBER:

LS-102



2 FIRST FLOOR PARTIAL LIFE SAFETY PLAN
SCALE: 3/32"=1'-0"

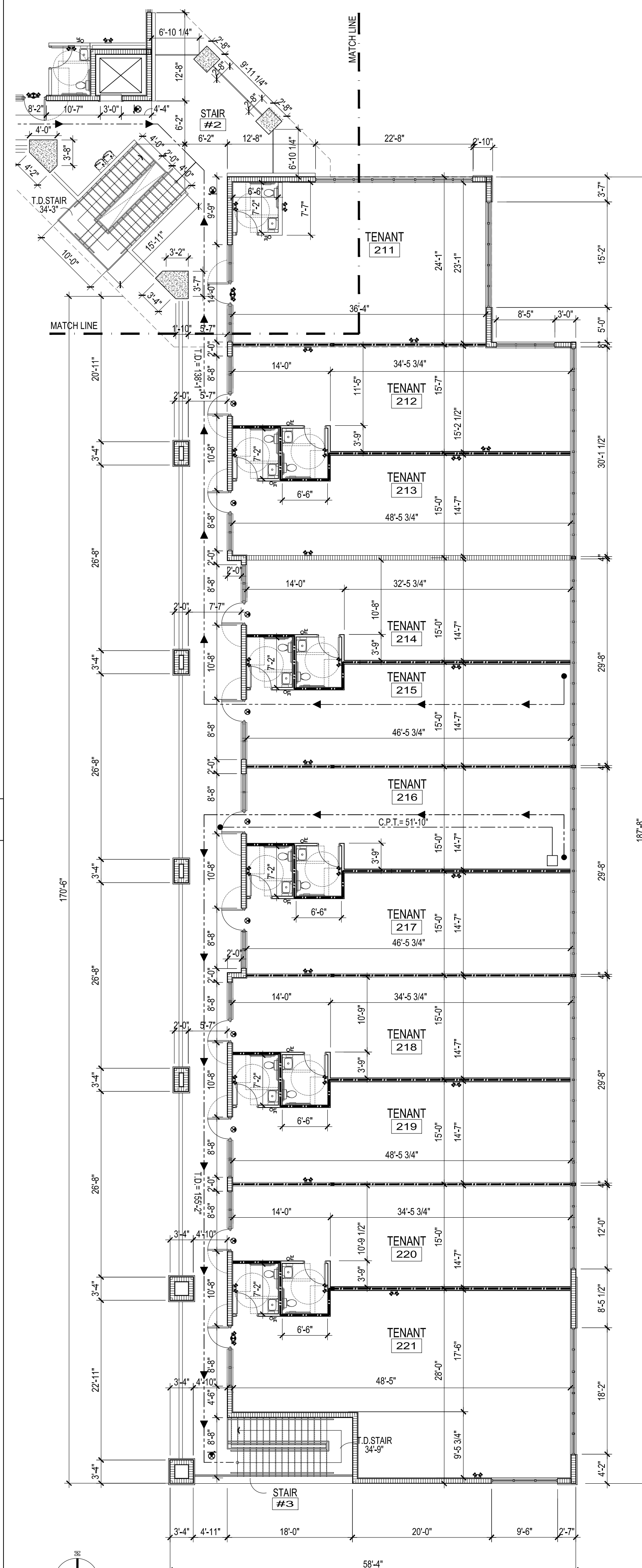
FIRE EXTINGUISHER LEGEND:

F.E. SURFACED MOUNTED FIRE EXTINGUISHER (MODEL #MPS SLBS, ABC) - MOUNTED AT 48" A.F.F. W/ WALL BRACKET TO TOP OF HANDLE. AND SHALL BE CURRENTLY DATED AND TAGGED BY A LICENSED FIRE EQUIPMENT COMPANY. COMPLY WITH NFPA 10, FURNISH AND INSTALL, AS A MINIMUM, PER EVERY 2,500 S.F., OR 1 PER EVERY TENANT SPACE LESS THAN 2,500 S.F.

FIRE PARTITION / WALL LEGEND:

- 1-HOUR FIRE RATED
- EMERGENCY BATTERY WALL PACK & EXIT LIGHT COMBINATION
- EXIT LIGHT
- PRIMARY EGRESS
- TRAVEL DISTANCE, 250 FT. MAXIMUM (NFPA 101, SECTION 36.2.6.2)
- COMMON PATH OF TRAVEL DISTANCE

3 LEGEND



1 FIRST FLOOR PARTIAL LIFE SAFETY PLAN
SCALE: 3/32"=1'-0"