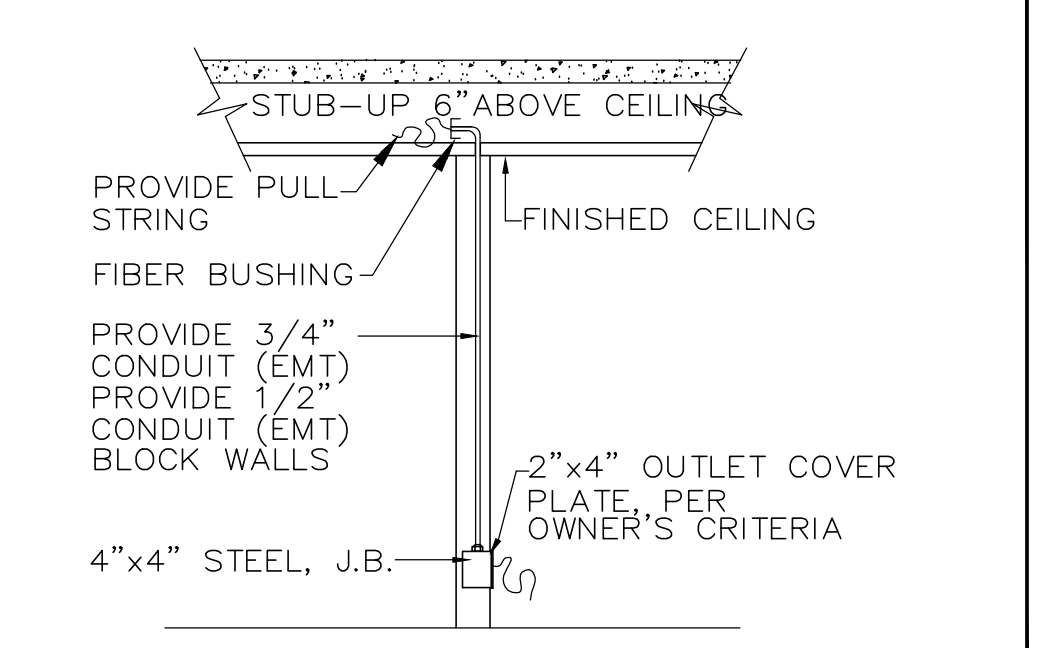
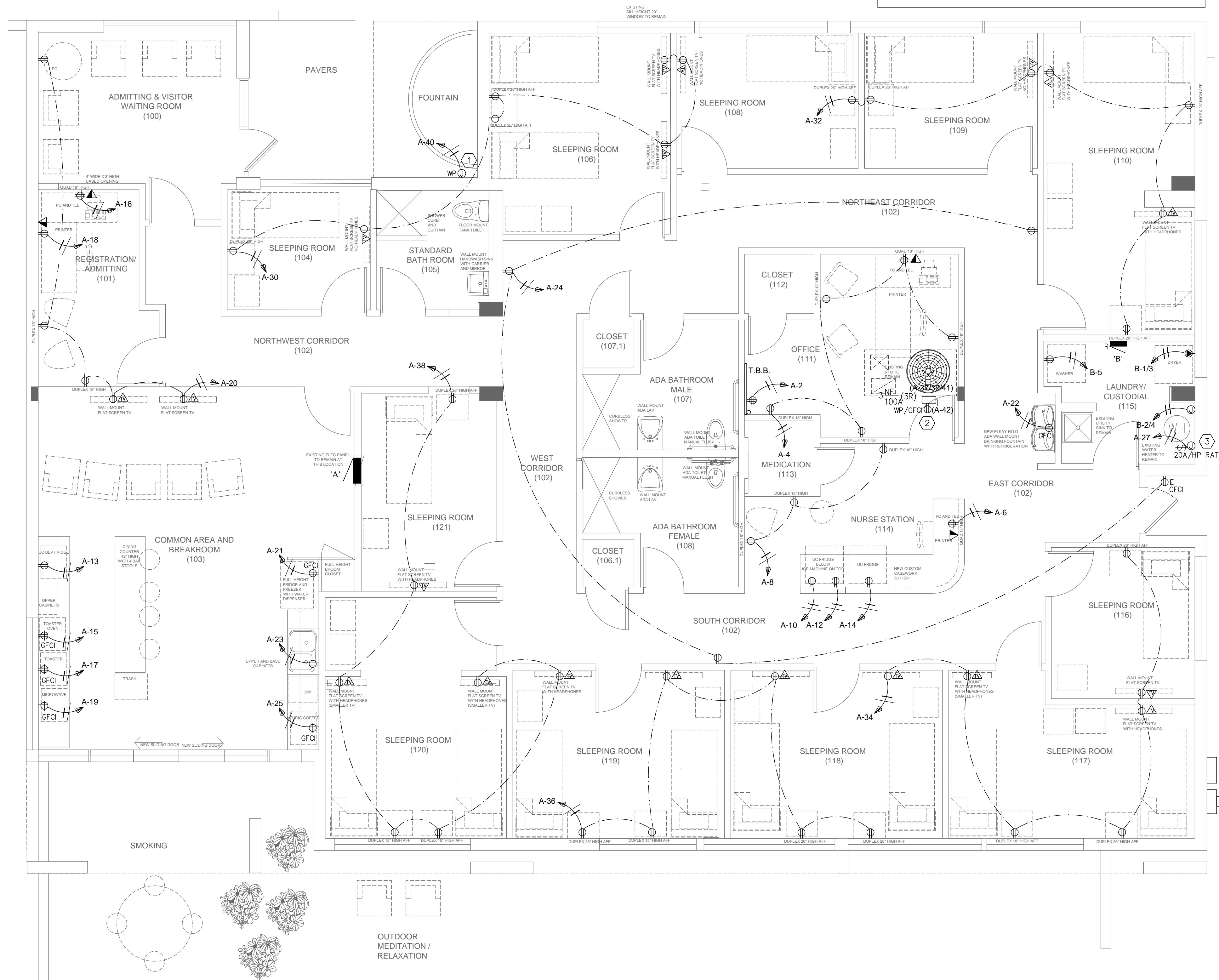
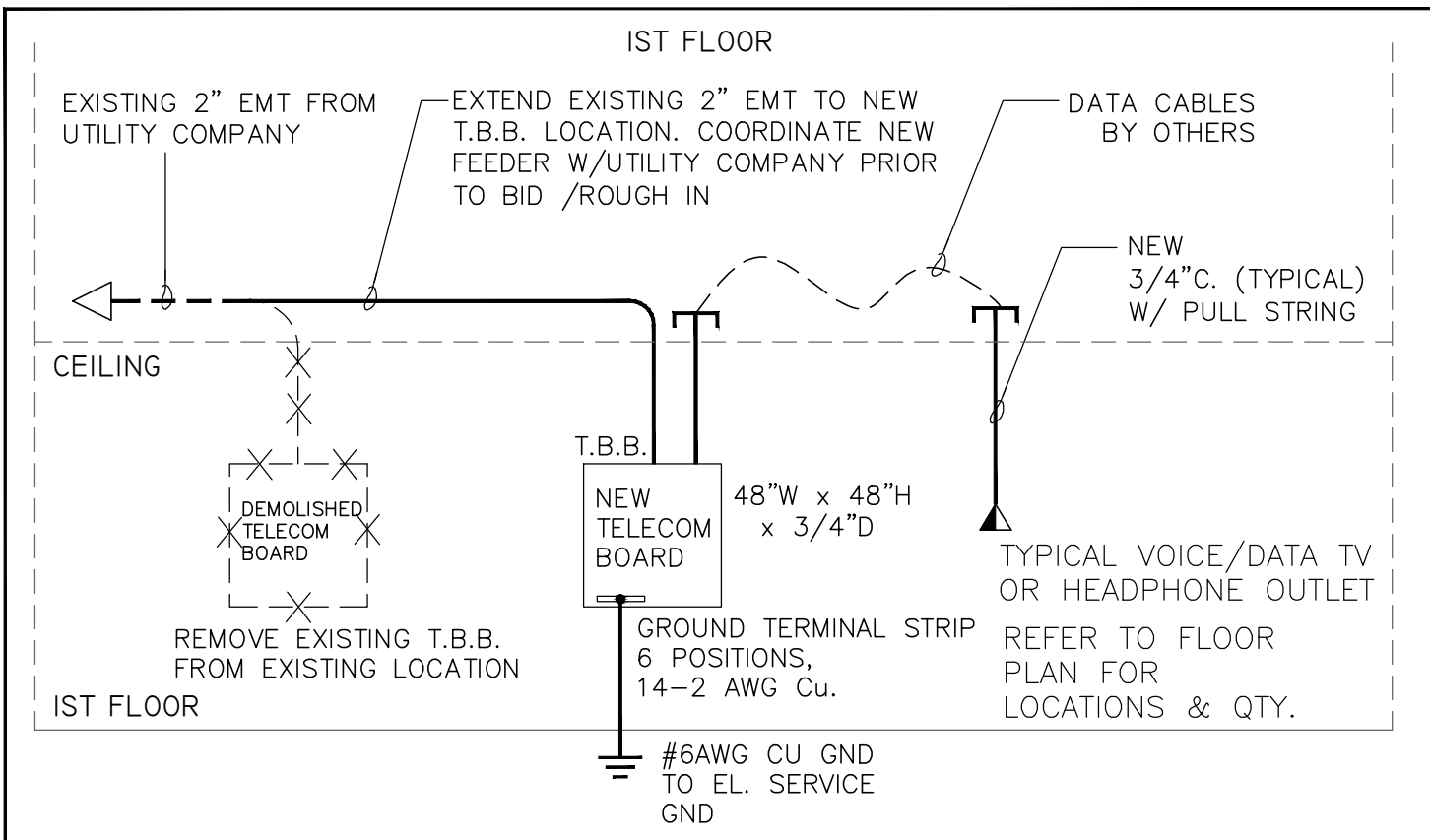


RECEPTACLES NOTES:
 - ALL OUTLETS LOCATED WITHIN 6FT OF THE OUTSIDE EDGE OF A SINK SHALL BE GFCI PROTECTED AS PER NEC 2011 210.8(B)5
 - ALL 125V, 15A AND 20A RECEPTACLES SHALL BE LISTED TAMPER RESISTANT RECEPTACLES AS PER NEC 2011 406.14

POWER LEGEND	
SYMBOL	DESCRIPTION
Ⓢ	SIMPLEX OUTLET (20A, +48"O.C. FROM A.F.F, U.N.D)
Ⓢ	DUPLEX RECEPT. (20A, +18"O.C. FROM A.F.F, U.N.D)
Ⓢ	DUPLEX RECEPTACLE INSTALLED ABOVE COUNTER (20A, +6"O.C., ABOVE COUNTER, U.N.D)
Ⓢ	QUAD RECEPT. (20A, +18"O.C. FROM A.F.F, U.N.D)
Ⓢ	FLOOR MTD. DUPLEX W/ PHONE/DATA (20A, U.N.D) IN SEPERATE RACEWAYS
Ⓢ	CEILING MOUNTED RECEPTACLE, 120V, 20A
Ⓢ	SWITCH DUPLEX (15A, +18"O.C. FROM A.F.F, U.N.D)
Ⓢ	240 V. RECEPT. (50A, +18"O.C. FROM A.F.F, U.N.D)
Ⓢ	SPECIAL PURPOSE RECEPT. (30A,+18"O.C. A.F.F, U.N.D)
Ⓢ	TYPICAL DATA AND POWER DROP IN SEPERATE RACEWAYS. PROVIDE WHIPS TO MODULAR FURNITURE, CONTAINING: • POWER • DATA WIRING • PHONE WIRING
Ⓢ	JUNCTION BOX (4x4" GALVANIZED STEEL, 18"U.N.D)
Ⓢ	DIGITAL TIME SWITCH - WALL MOUNTED LEVITON MDL#6124H-I, OR EQUAL APPROVED
Ⓢ	DATA/TELEPHONE OUTLET (+18"O.C. A.F.F, U.N.D) HATCH AREA INDICATES PHONE
Ⓢ	TV, CABLE BOX, SATELLITE BOX CONNECTION OUTLET HEADPHONES CONNECTION OUTLET
Ⓢ	PROVIDE 3/4"EMT 6" ABOVE CEILING W/ PULL STRING FOR EACH JUNCTION. JACKS AND CABLEING TO BE BY TENANT
Ⓢ	JUNCTION BOX MOUNTED 6" A.F.F. TO FEED WORK STATIONS THROUGH MODULAR FURNITURE. TENANTS TO PROVIDE CONNECTION TO THEIR OFFICE FURNITURE SYSTEM
Ⓢ	HP RATED DISCONNECT (+60"O.C. A.F.F, U.N.D) NEMA 3R FOR EXTERIOR AND NEMA 1 FOR INTERIOR.
Ⓢ	PANELBOARD (+60" A.F.F. O.C OF PNL, U.N.D)
Ⓢ	ELECTRICAL METER (+60" A.F.F O.C OF MTR, U.N.D)
Ⓢ	PHASE --- INDICATES CIRCUIT LINE NEUTRAL --- INDICATES HOMERUN LINE ISOLATED GND. --- CIRCUIT NUMBER
Ⓢ	FUSE SIZE (NEMA RATING) --- WIRE IN FREE AIR SUPPORTED TO BLDG. STRUCTURE FRAME SIZE --- NUMBER OF POLES
NOTES	
1. NOT ALL SYMBOLS MAY APPEAR ON PLANS. 2. IF THERE IS NO DESIGNATION NEXT TO FIXTURE, THEN ASSUME IT IS A NEW FIXTURE. IF NOT EXISTING, LOCATE IT AS SHOWN ON PLANS.	
DESIGNATION / DESCRIPTION	
+84" DENOTES HEIGHT ABOVE FINISHED FLOOR	UND UNLESS NOTED DIFFERENTLY
AFCI ARC FAULT CIRCUIT INTERRUPT	NL NIGHT LIGHT, UNSWITCHED 24HRS ON
GFCI GROUND FAULT CIRCUIT INTERRUPT	T/S TIME SWITCH
WP WEATHER PROOF ENCLOSURE	PC PHOTO CELL
IG ISOLATED GROUND	LC LIGHTING CONTACTOR
N NEW FIXTURE	MWC MINIMUM WORK CLEARANCE
R RELOCATED FIXTURE	OCP OVER CURRENT PROTECTION
E INDICATES AN EXISTING FIXTURE TO REMAIN	OC ON CENTER
T/L TWIST LOCK	SW SHOW WINDOW RECEPTACLE



LOW VOLTAGE OUTLET DETAIL N.T.S. |



VOICE / DATA RISER DETAIL N.T.S. | 2

POWER PLAN
 scale: 1/4" = 1'-0"

KEY NOTES: (#)

- FOR FOUNTAIN PUMP CONNECTION, COORDINATE EXACT LOCATION AND WIRING REQUIREMENTS WITH OWNER AND SPECIALTY CONTRACTOR PRIOR TO BID/ROUGH IN.
- FIELD VERIFY EXISTING LOCATION/CONDITION OF ROOF SERVICE RECEPTACLE AND PROVIDE NEW AS SHOWN IF NOT-EXISTING/UNFOUND. FIELD VERIFY CONDITION OF THE EXISTING RTU DISCONNECT AND REPLACE WITH NEW IF FOUND UNSOUND.
- FOR WATER CIRCULATION PUMP. FIELD COORDINATE EXACT LOCATION PRIOR TO ROUGH IN.

AMERICAN UNITED
 Engineers Inc.
Dedicated to Excellence

AUE

4508 SW 24th Street
 Fort Lauderdale, FL 33317
 Tel: (954) 471-8657
 american.eng@comcast.net

CA # 29803

project no. 1635-00

CCS
 ARCHITECTURAL ENTERPRISES, INC.
 499 East Palmetto Park Rd.
 Suite 204
 Boca Raton, FL 33432
 T 561.479.9884
 www.ccsarch.com
 Florida Registration Number
 AA26001852

CONSULTANTS:
 ELECTRICAL, MECHANICAL,
 PLUMBING:
 AMERICAN UNITED ENGINEERS
 4508 SW 24TH STREET
 FORT LAUDERDALE, FL 33317
 PHONE: (954) 471-8657

PROJECT:
 INTERIOR IMPROVEMENTS
 950 NW 9th Court
 Boca Raton, FL

DESIGN DEVELOPMENT	
PROJECT NUMBER:	2016.06
DATE:	06-29-2016
CAD FILE NO.:	
ADDENDA/REVISIONS	
△	
△	
△	
△	
△	
△	
△	
△	
△	
△	

SEAL:

CYNTHIA C. SPRAY, AIA AR-94167
 DRAWING TITLE:
POWER PLAN

DRAWING NO: **E-1**

date