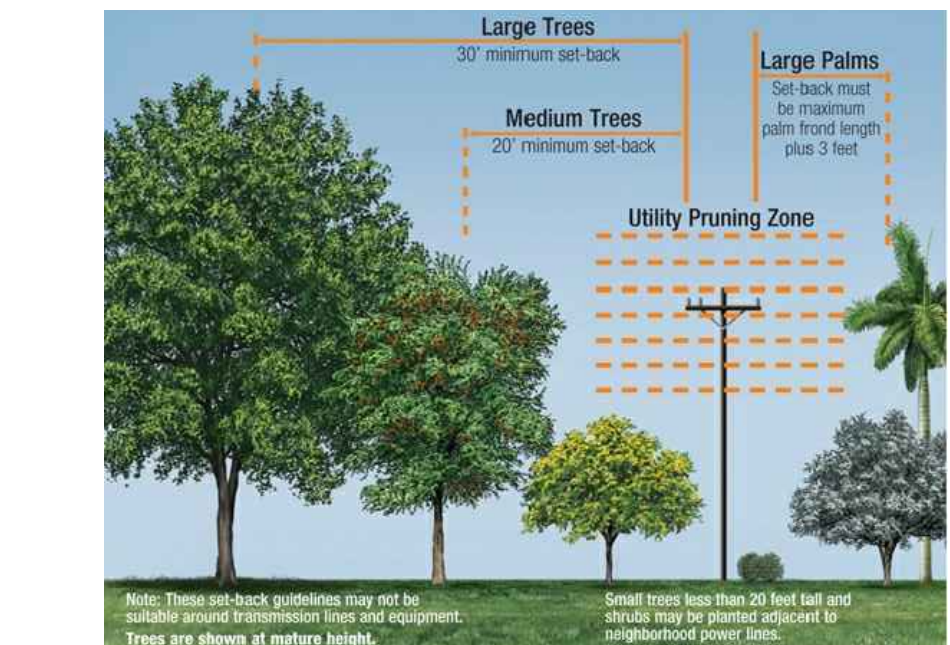


LANDSCAPING POINT CALCULATIONS

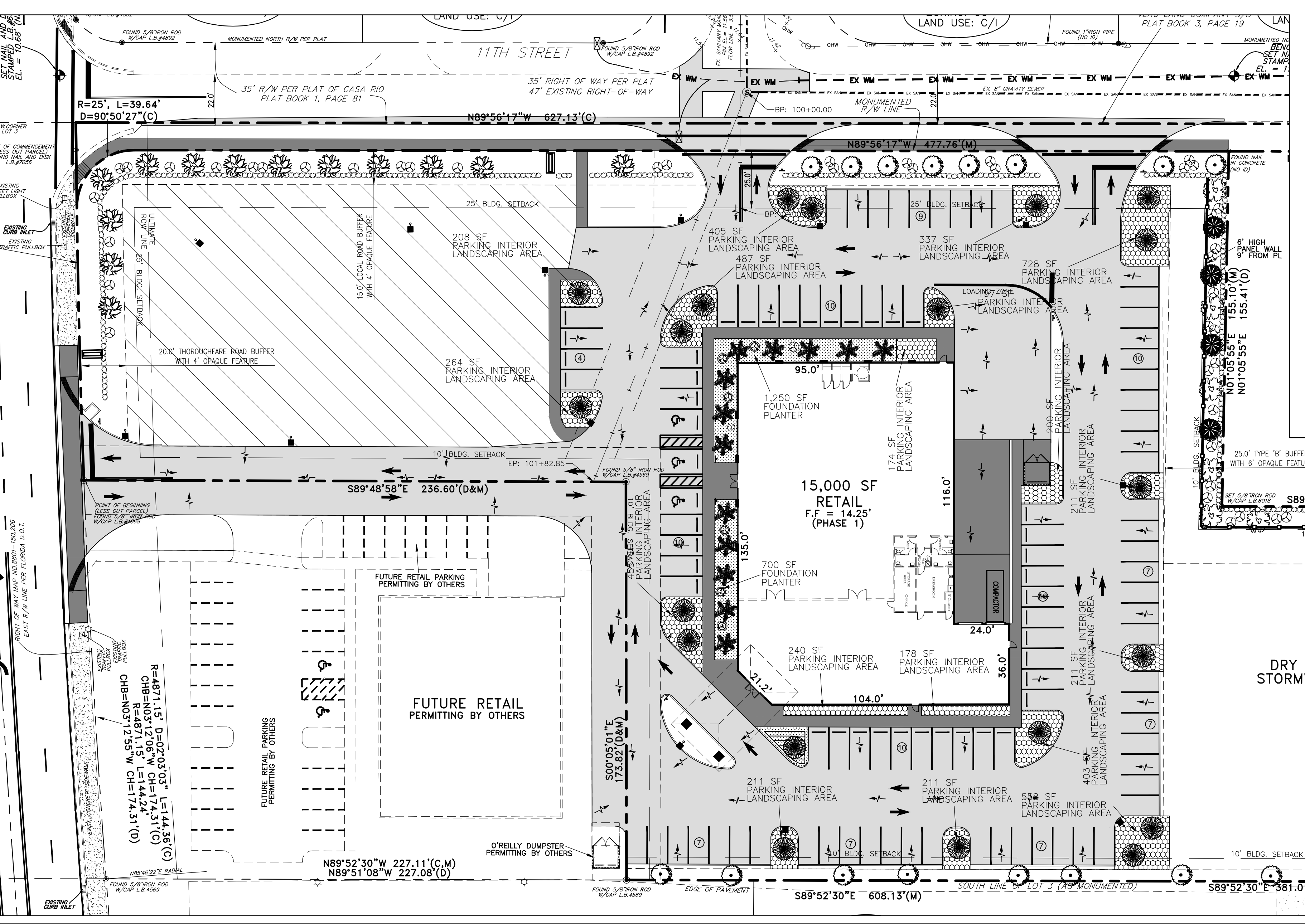
Table with 3 columns: Item Description, Points Allowed, Points Provided. Includes categories like Irrigation System, Shrubs, Trees, Florida Native Landscaping, etc.

LANDSCAPE MATERIAL STANDARDS & NOTES

- Quality, plant materials used shall conform to the standards for Florida No. 1 or better, as given in the most current edition of "Grades and Standards for Nursery Plants" Part I and Part II, State of Florida.
(2) Drought tolerance requirements: a minimum of fifty (50) percent of total cumulative landscape plant material used to meet the provisions of the I.R.C. L.D.R., CHAPTER 92B, SHALL BE VERY DROUGHT TOLERANT...



FLORIDA POWER AND LIGHT DETAIL FOR PLANTINGS ADJACENT TO WIRES



LANDSCAPE CALCULATIONS - PHASE 1

- I. PERIMETER LANDSCAPE ADJACENT TO PUBLIC RIGHT-OF-WAYS
A. WEST PROPERTY LINE - HIGHWAY 1 THOROUGHFARE ROAD BUFFER = 144 LF - 60 LF (DRIVEWAY AND SIGN) = 84 LF 20' WIDE BUFFER W/ 6' OPAQUE FEATURE - 1 FOOT BERM WITH 3' HEDGE REQUIRED...

LANDSCAPE NOTES

- QUALITY PLANT MATERIALS USED IN CONFORMANCE WITH THE PROVISIONS OF THIS CHAPTER SHALL CONFORM TO THE STANDARDS FOR FLORIDA NO. 1 OR BETTER, UNLESS SPECIFICALLY EXCEPTED BELOW.
(2) DROUGHT TOLERANCE REQUIREMENTS: A MINIMUM OF FIFTY (50) PERCENT OF TOTAL CUMULATIVE LANDSCAPE PLANT MATERIAL USED TO MEET THE PROVISIONS OF THE "SOUTH FLORIDA WATER MANAGEMENT DISTRICT XERISCAPE PLANT GUIDE" OR A COMPARABLE PUBLISHED, EXISTING NATIVE PLANT SPECIES PRESERVED ON-SITE MAY BE CONSIDERED AS CREDIT TOWARD THE DROUGHT TOLERANCE PERCENTAGE REQUIREMENT.

Professional engineering stamp for Joseph W. Schulke, P.E., including fields for Date, Revised, Drawn, and Author, along with project information and a graphic scale.