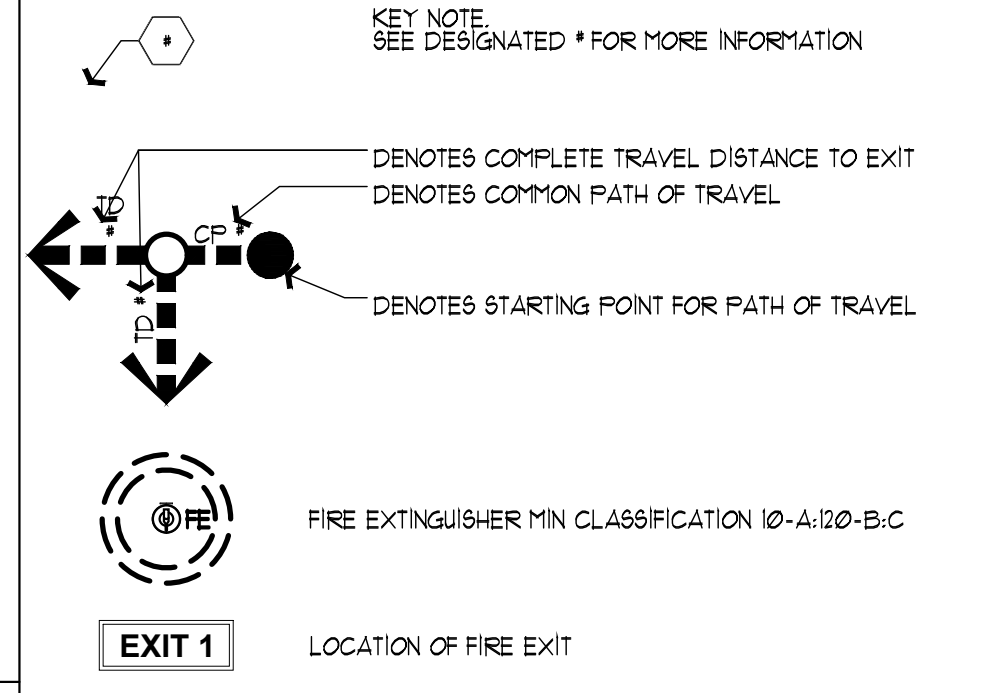


EGRESS/FURNITURE PLAN
SCALE: 1/8" = 1'-0"

EGRESS GENERAL NOTES
(BUSINESS)

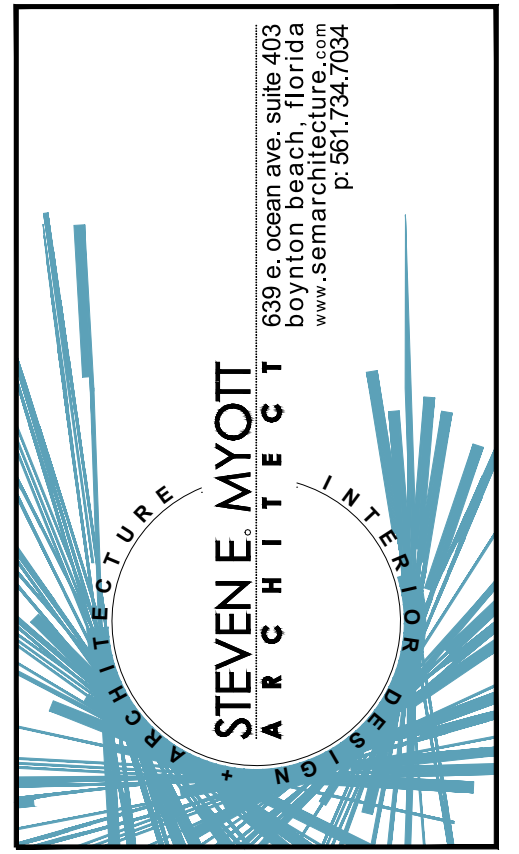
- EGRESS REQUIREMENTS SHALL COMPLY WITH NFPA 101, CHAPTER 10 SECTION 10.2.1; MEANS OF EGRESS COMPONENTS AND SECTION 10.2.2; MEANS OF EGRESS REQUIREMENTS FOR BUSINESS OCCUPANCIES. ALL HARDWARE SHALL COMPLY WITH SECTION 10.2.3; LOCKS, LATCHES, AND ALARM DEVICES FOR LOCKING REQUIREMENTS.
- EXIT REQUIREMENTS PER 1015
 0-49 PERSONS
 1 EXIT REQUIRED
 W/ COMMON PATH OF TRAVEL PER 1014.3
 MORE THAN 50 PERSONS:
 TWO EXITS REQUIRED DOOR MUST SWING WITH PATH OF EGRESS
 COMMON PATH OF TRAVEL PER IBC SEC 1014.3.1 NFPA 101, 2012 EDITION CHAPTER 10, 36.2.3 FOR BUSINESS OCCUPANCY:
 15'-0" WITHOUT SPRINKLER SYSTEM
 EXIT ACCESS TRAVEL DISTANCE PER TABLE 1016.1 FOR BUSINESS OCCUPANCY:
 200'-0" WITHOUT FIRE SPRINKLER SYSTEM
- FOR FLAME SPREAD SMOKE GENERATION, PROVIDE (1) 10 LB. FIRE EXTINGUISHER (SEE TYPE BELOW) PER 2500 SF. LOCATION AS PER PLANS OR AS DIRECTED BY FIELD FIRE INSPECTOR EXTINGUISHERS SHALL BE MOUNTED TO 48" AFF TO TOP OF HANDLE AND NOT TO EXCEED 15' TRAVEL DISTANCE. EXTINGUISHERS WILL BE CURRENTLY TAGGED BY A LICENSED FIRE EQUIPMENT COMPANY.
- PROVIDE PORTABLE FIRE EXTINGUISHERS DURING CONSTRUCTION PER FLORIDA FIRE PREVENTION CODE, NFPA 1. COMPLY TO SECTIONS:
 - 16.3.6.1: THE SUITABILITY, DISTRIBUTION AND MAINTENANCE OF EXTINGUISHERS SHALL BE IN ACCORDANCE WITH SECTION 13.6
 - 16.3.6.4: AT LEAST ONE APPROVED FIRE EXTINGUISHER SHALL BE PROVIDED IN PLAIN SIGHT ON EACH FLOOR AT EACH USABLE STAIRWAY AS SOON AS COMBUSTIBLE MATERIAL ACCUMULATES.
 - 16.3.6.5: SUITABLE FIRE EXTINGUISHERS SHALL BE PROVIDED ON SELF-PROPELLED EQUIPMENT.
 - NFPA 1141 SECTION 5.2.1 (CURRENT EDITION), AT LEAST ONE PORTABLE FIRE EXTINGUISHER HAVING A RATING OF AT LEAST 10-A:120-B-C SHALL BE WITHIN A TRAVEL DISTANCE OF 75 FT OR LESS OF ANY POINT OF STRUCTURE UNDER CONSTRUCTION
 - NFPA 1141 SECTION 5.2.2 (CURRENT EDITION), PERSONNEL NORMALLY ON THE CONSTRUCTION SITE SHALL BE INSTRUCTED IN THE USE OF THE FIRE EXTINGUISHERS PROVIDED.
 - NFPA 113.6.1 (CURRENT EDITION) THE SELECTION, INSTALLATION, DISTRIBUTION, INSPECTION, MAINTENANCE AND TESTING OF PORTABLE FIRE EXTINGUISHERS SHALL BE IN ACCORDANCE WITH NFPA 10 AND SECTION 13.6

EGRESS PLAN LEGEND



EGRESS PLAN KEY NOTES

- (E1) GC TO FURNISH AND INSTALL NEW FIRE EXTINGUISHERS MINIMUM 10-A:120-B-C CLASSIFICATION RATING AND WILL BE CURRENTLY TAGGED BY A LICENSED FIRE EQUIPMENT COMPANY. COORDINATE FINAL LOCATION WITH FIELD INSPECTOR. FIRE EXTINGUISHERS SHALL BE MOUNTED 48" AFF TO THE TOP OF HANDLE, NOT EXCEED 15' TRAVEL DISTANCE.
- (E2) FURNITURE LAYOUT TO BE DETERMINED BY OWNER. 3'-8" CLEAR MINIMUM WIDTHS TO ALL EXITS SHALL BE MAINTAINED.



Camp Canine
- INTERIOR RENOVATION -
PENN DUTCH PLAZA
3191 SR7
MARGATE, FLORIDA 33063

ARCHITECT
STEVEN E. MYOTT, ARCHITECT
AR00014888

ALL DRAWINGS AND WRITTEN MATERIAL APPEARING HEREIN CONSTITUTE ORIGINAL AND UNPUBLISHED WORK OF THE ARCHITECT AND MAY NOT BE USED, REPRODUCED OR DISCLOSED IN ANY FORM WITHOUT THE EXPRESSED WRITTEN CONSENT OF THE ARCHITECT

PROJECT NO: 16.049
DRAWN BY: SV
CHECKED BY: SM

NO. DATE: ISSUED FOR:
1 05.10.2016 PRELIMINARY REVIEW

**EGRESS/
FURNITURE
PLAN**

A120
PRINTED ON: 5/20/2016