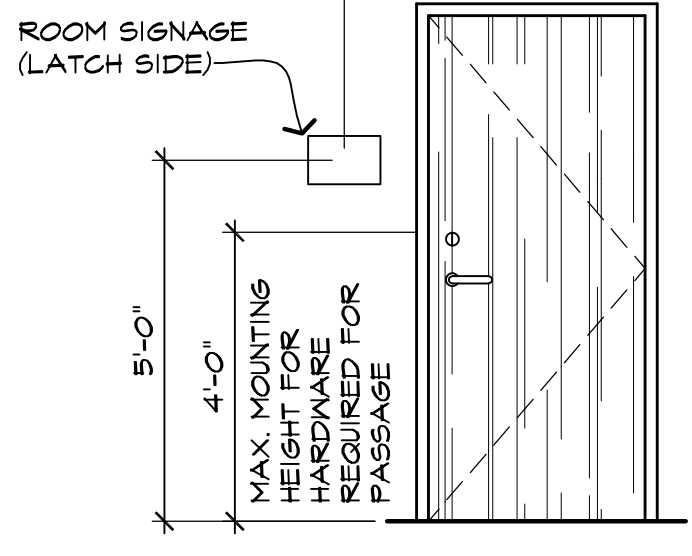
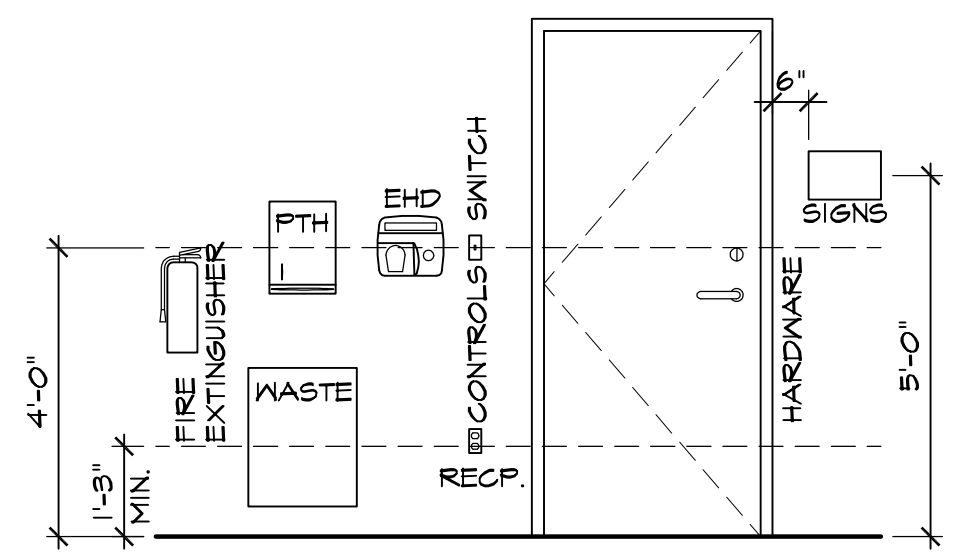


**HANDWASH LAVATORY ELEVATION**  
SCALE: 1/2"=1'-0"



**2 DOOR SIGNAGE**  
SCALE: 3/8"=1'-0"



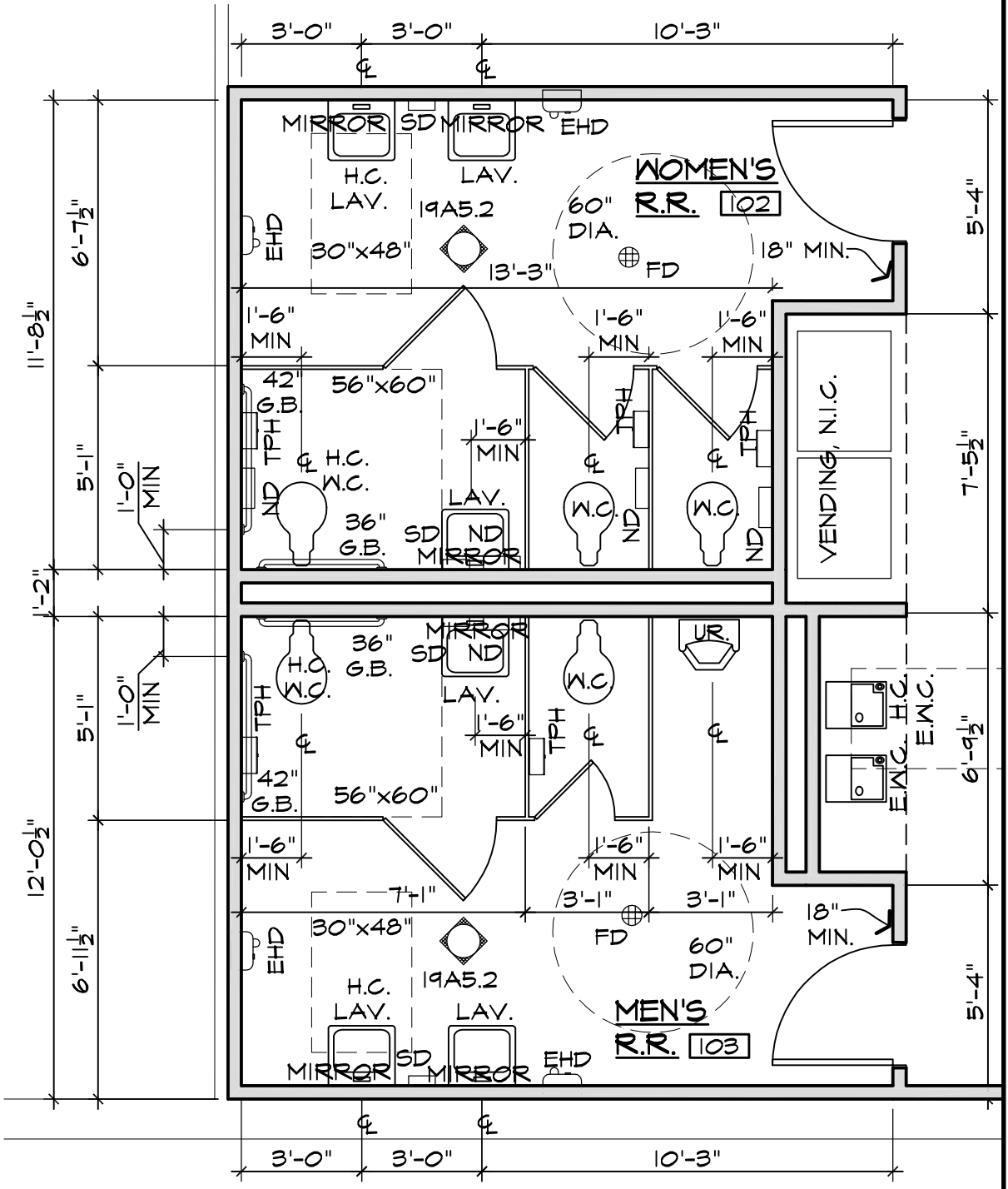
**CONTROLS AND OPERATING MECHANISMS:**  
FORWARD REACH:  
CONTROLS AND OPERATING MECHANISMS SHALL BE LOCATED WITHIN THE REACH RANGE SHOWN.  
SIDE REACH:  
SIDE REACH RANGE MAXIMUM HEIGHT MAY BE INCREASED TO 54" AFF AND MINIMUM AFF MAY BE REDUCED TO 4" AFF.  
FIRE EXTINGUISHERS:  
TOP OF FIRE EXTINGUISHER, HAVING A GROSS WEIGHT LESS THAN 40 LBS, SHALL BE NOT MORE THAN 5 FEET ABOVE THE FLOOR; 3-1/2 FEET IF GROSS WEIGHT IS 40 LBS. OR GREATER.

**TYPICAL FIXTURE MT'G. HEIGHTS**  
SCALE: 3/8"=1'-0"

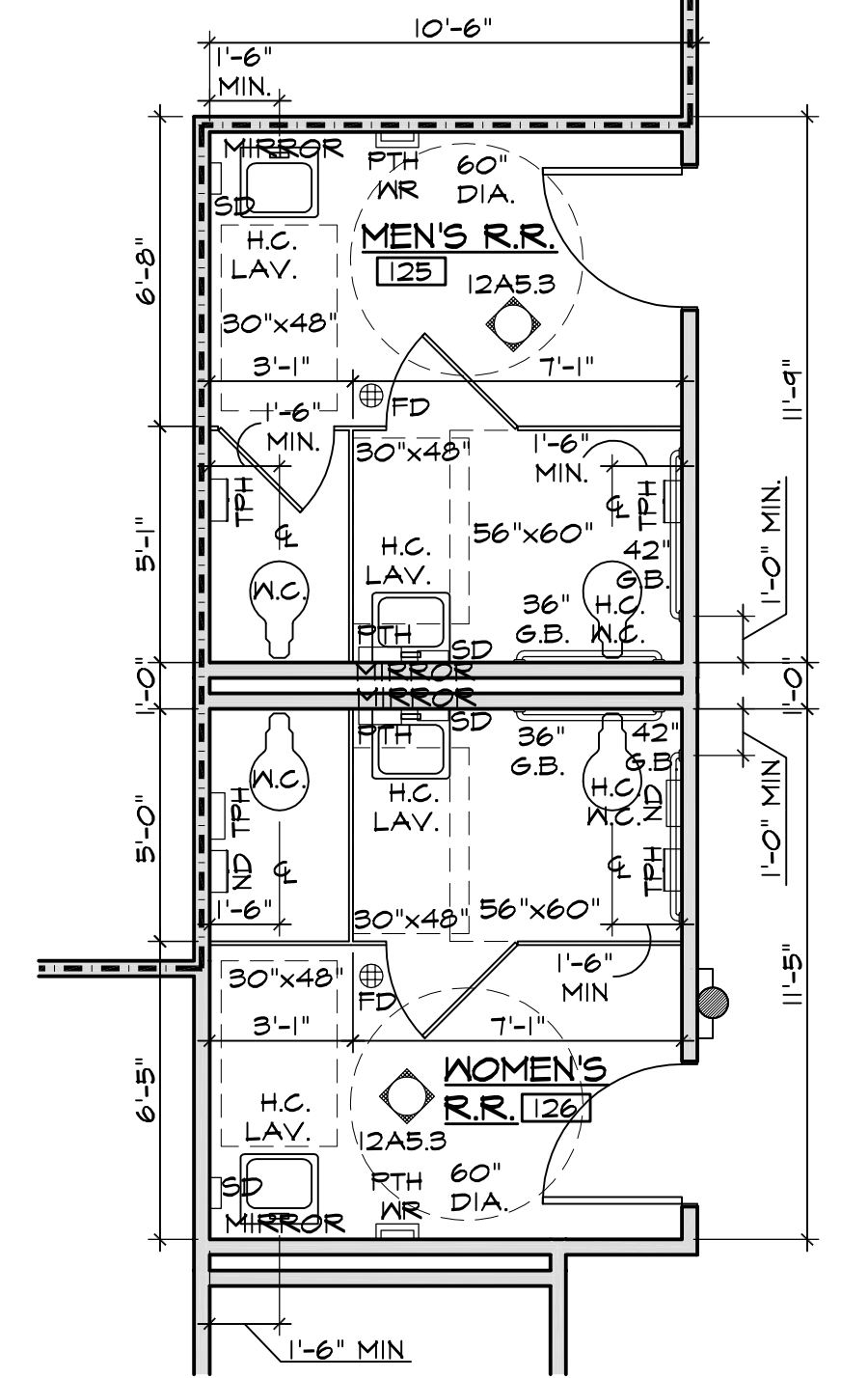
**WASHROOM ACCESSORIES SCHEDULE**

DESCRIPTION	MODEL
TPH TOILET PAPER HOLDER	BRADLEY 5424
MIRROR 24x36 MIRROR	BRADLEY 781
36"GB 36" GRAB BAR	BRADLEY 812
42"GB 42" GRAB BAR	BRADLEY 812
SD SOAP DISPENSER	BRADLEY 6542
PTH PAPER TOWEL HOLDER	BRADLEY 250-15
WR WASTE RECEPTACLE W/ LINER	BRADLEY 356
EHD ELECTRIC HAND DRYER, SENSOR-OPERATED	BRADLEY 2404-28
ND NAPKIN DISPOSAL	BRADLEY 4722-15

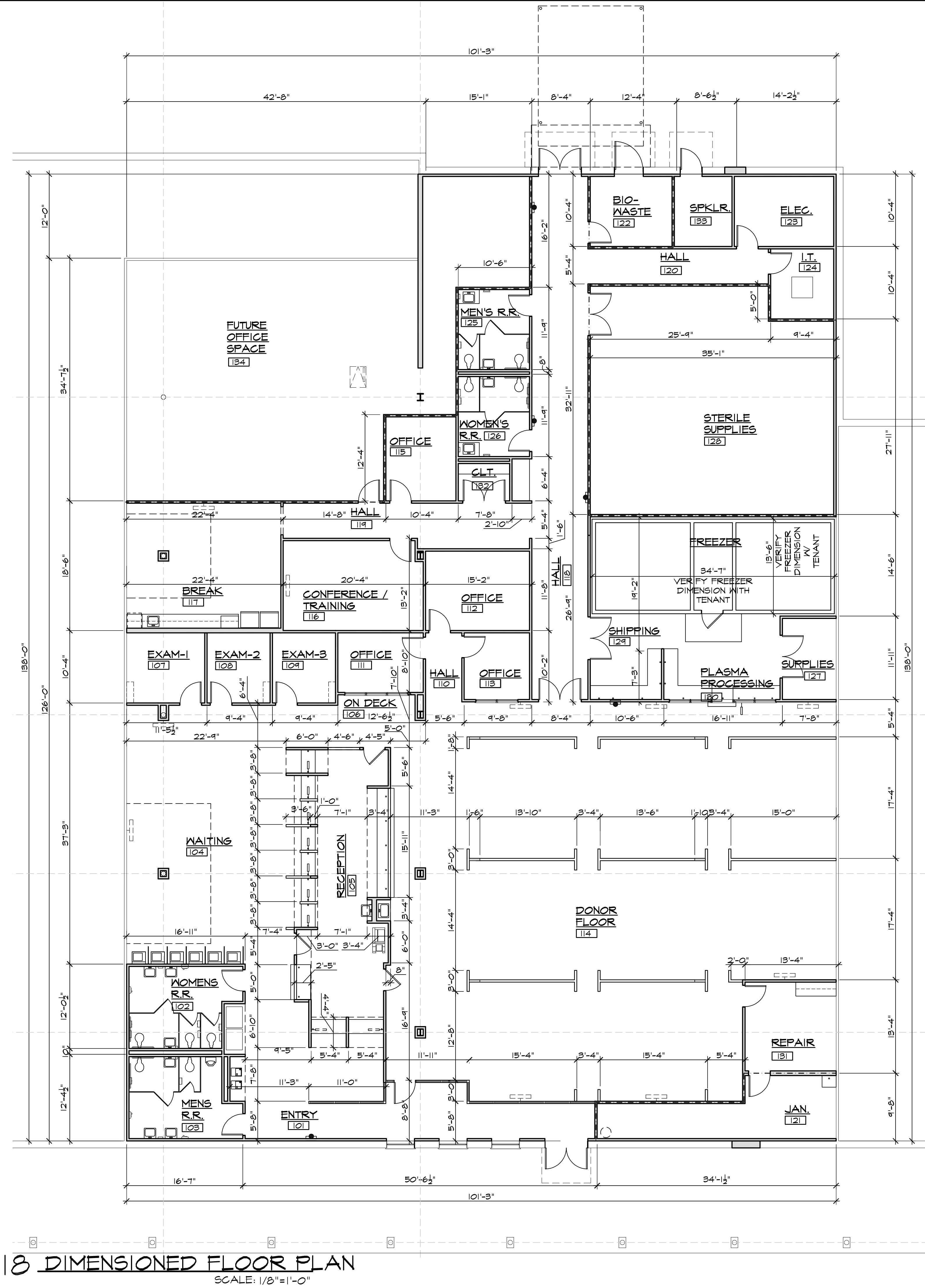
**NOTES:**  
1. THE CONTRACTOR SHALL PROVIDE SOLID 2x8 (MIN) WOOD BLOCKING, SECURELY FASTENED TO WALL FRAMING, BEHIND ALL PLUMBING FIXTURES AND ACCESSORIES.  
2. INSTALL TOILETS WITH LEVERS AT OPEN SIDE OF STALLS / RESTROOMS.



**12 R.R. PLAN BLOW-UP**  
SCALE: 1/4"=1'-0"

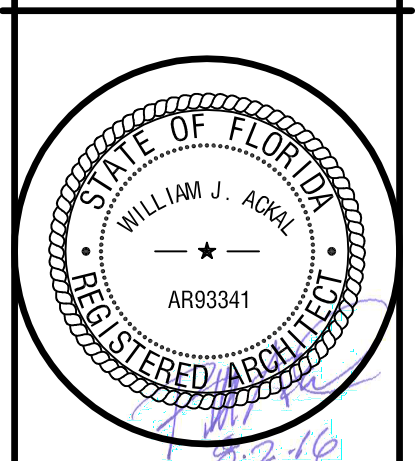


**17 R.R. PLAN BLOW-UP**  
SCALE: 1/4"=1'-0"



**18 DIMENSIONED FLOOR PLAN**  
SCALE: 1/8"=1'-0"

INTERIOR TENANT IMPROVEMENT FOR:  
**IMMUNOTEK BIO CENTERS, LLC**  
4560 LAKE WORTH ROAD  
OFFICE DEPOT PLAZA, SUITE B-5  
LAKE WORTH, PALM BEACH COUNTY, FL 33463



copyright © 2016 ACKAL ARCHITECTS, APC.  
THIS DOCUMENT IS THE PROPERTY OF ACKAL ARCHITECTS, APC.  
REPRODUCTION OR USE WITHOUT WRITTEN CONSENT FROM ACKAL ARCHITECTS, APC.  
proj. no. 16-002  
date: 08-02-2016  
project architect: B.A.  
project manager: A.D.  
drawn by: A.D., J.L., C.T.  
file name: LAKEWORTH  
revised:  
plot scale: 1:1  
sheet name:  
DIMENSIONED FLOOR PLAN / R.R. BLOW-UP PLANS  
sheet no.  
**A3.3**  
6 of 42