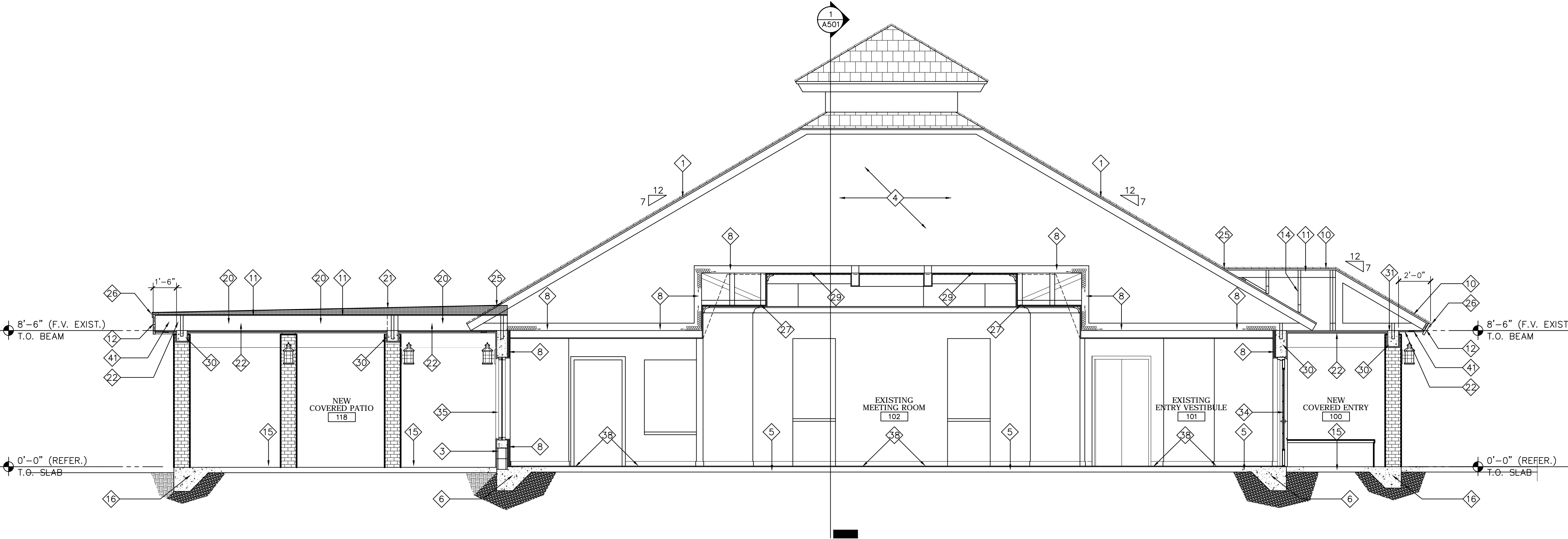


1 SECTION
A502 CLUBHOUSE BUILDING SCALE: 1/4" = 1'-0"



2 SECTION
A502 CLUBHOUSE BUILDING SCALE: 1/4" = 1'-0"

BUILDING SECTION LEGEND	
1	EXISTING CEMENT TILE ROOF SYST., TYP.
2	EXISTING FASCIA, TYP.
3	EXISTING PAINTED STUCCO ON REINFORCED C.M.U. WALL, TYP.
4	EXISTING WOOD ROOF TRUSS SYST., TYP.
5	EXISTING CONC. SLAB ON GRADE, TYP.
6	EXISTING CONC. FOOTING, TYP.
7	EXISTING PAINTED G.W.B. ON WOOD FRAME PARTITION TO REMAIN, TYP.
8	EXISTING INSULATION TO REMAIN, TYP.
9	EXISTING PAINTED STUCCO ON MTL. LATH ATT. TO SHEATHING ATT. TO FRAMING, TYP.
10	NEW CEMENT TILE ROOF SYST. TO MATCH EXISTING ATT. OVER ROOF MEMBRANE & BASE SHEET ATT. TO SHEATHING PER N.O.A. & MFR. INSTRUCTIONS, TYP.
11	NEW EXTERIOR PLYWD. SHEATHING ATT. TO TRUSS SYST., TYP. (SEE 'S' DWGS.)
12	NEW ALUM. CLAD FASCIA TO MATCH EXISTING ATT. TO SUB-FASCIA ATT. TO TRUSSES, TYP.
13	NEW PAINTED STUCCO ON REINFORCED C.M.U. WALL, TYP.
14	NEW SPECIALTY ENGINEERED, PRE-FAB. WOOD ROOF TRUSS SYST. ATT. TO BLDG. STRUCTURE, TYP.
15	NEW CONC. SLAB ON GRADE, TYP. (SEE 'S' DWGS.)
16	NEW CONC. FOOTING MONOLITHIC W/ SLAB, TYP.
17	NEW PAINTED G.W.B. ON GALV. MTL. FRAMED PARTITION ATT. TO BLDG. STRUCTURE, TYP. (SEE WALL TYPES)
18	NEW R-11, 1/2" THK. FOIL-FACED POLY-ISO BOARD INSULATION BTWN. GALV. MTL. Z-FURRING AT EXTERIOR WALLS, TYP. (SEE WALL TYPES)
19	NEW R-18, 6" THK. FIBERGLASS BATT INSULATION BTWN. TRUSSES, TYP.
20	NEW 2X P.T. WOOD JOISTS ATT. TO BLDG. STRUCTURE OR BEAM, TYP. (SEE 'S' DWGS.)
21	NEW 3-PLY MODIFIED BITUMENOUS LOW-SLOPED ROOF SYST. ATT. TO TAPERED RIGID INSULATION ATT. TO PLYWD. SHEATHING PER N.O.A. & MFR. INSTRUCTIONS, TYP.
22	NEW SOFFIT OF PAINTED STUCCO OVER GALV. MTL. LATH ATT. TO GALV. MTL. CHANNEL FURRING ATT. TO TRUSS SYST., TYP.
23	NEW ROOF CRICKET OF 3-PLY MODIFIED LOW-SLOPED ROOF SYST. ATT. TO PLYWD. SHEATHING PER N.O.A. & MFR. INSTRUCTIONS, TYP.
24	NEW 2-PIECE ALUM. FLASHING & COUNTER-FLASHING AT SIDE WALL TERMINATION OF ROOFING SYST. PER N.O.A. & MFR. INSTRUCTIONS, TYP.
25	NEW ALUM. OR GALV. MTL. BREAK-METAL FLASHING AT VALLEYS & TRANSITION BTWN. LOW-SLOPED & SLOPED TILE ROOFING SYSTEMS, PER N.O.A. & MFR. INSTRUCTIONS, TYP.
26	NEW ALUM. DRIP-EDGE FLASHING TO MATCH EXISTING SIZE & COLOR ATT. TO SHEATHING & OVER SPACER ATT. TO FASCIA PER N.O.A. & MFR. INSTRUCTIONS, TYP.
27	NEW PAINTED G.W.B. ON GALV. MTL. STUD FRAME-DOWN SOFFIT OR HEADER PER MFR. INSTRUCTIONS, TYP.
28	NEW ACOUSTIC PANEL & SUSPENDED MTL. GRID CEILING SYST. PER MFR. INSTRUCTIONS, TYP. (SEE 'I.D. DWGS.)
29	NEW PAINTED G.W.B. ATT. TO FURRED OR FRAME-DOWN GALV. MTL. STUD CEILING PER MFR. INSTRUCTIONS, TYP.
30	NEW C.I.P. REINFORCED CONC. BEAM, TYP. (SEE 'S' DWGS.)
31	NEW GROUT FILLED REINFORCED C.M.U. TIE-BEAM, TYP. (SEE 'S' DWGS.)
32	NEW PRE-CAST CONC. LINTEL, TYP. (SEE 'S' DWGS.)
33	NEW C.I.P. REINFORCED CONC. SILL, TYP. (SEE 'S' DWGS.)
34	NEW HURRICANE IMPACT RATED ALUM. & LAMINATED GLASS DOOR SYST. ATT. TO BLDG. STRUCTURE PER N.O.A. & MFR. INSTRUCTIONS, TYP.
35	NEW HURRICANE IMPACT RATED ALUM. & LAMINATED GLASS WINDOW SYST. ATT. TO BLDG. STRUCTURE PER N.O.A. & MFR. INSTRUCTIONS, TYP.
36	NEW HURRICANE IMPACT RATED INSULATED HOLLOW MTL. DOOR & FRAME ATT. TO BLDG. STRUCTURE PER N.O.A. & MFR. INSTRUCTIONS, TYP.
37	NEW SOLID CORE WOOD INTERIOR DOOR & FRAME W/ CASINGS, TYP. (SEE 'I.D. DWGS. FOR CASING SPECS.)
38	NEW FLOOR FIN. PER MFR. INSTRUCTIONS, TYP. (SEE 'I.D. DWGS.)
39	NEW WALL BASE PER MFR. INSTRUCTIONS, TYP. (SEE 'I.D. DWGS.)
40	NEW 12" H. X 3" THK. E.I.F.S. BAND W/ REINFORCING FIBERGLASS MESH MASTIC ATT. TO STUCCO PER MFR. INSTRUCTIONS, TYP.
41	NEW 3" W. X CONT. STUCCO-STOP TYPE SOFFIT VENT ATT. TO FURRING CHANNELS, TYP.

REVISIONS	BY

Slattery & Associates
ARCHITECTS PLANNERS
 2060 NW BOCA RATON BLVD.
 SUITE 2
 BOCA RATON, FL 33431
 TEL.: 561-392-3848
 FAX: 561-392-5402
 WWW.SLATTERYARCHITECTS.COM

**WOODFIELD HUNT CLUB
 CLUBHOUSE RENOVATION
 AND EXPANSION**
 4420 WOODFIELD BLVD.
 BOCA RATON, FLORIDA

DATE OF SEAL: 7-27-16
 SLATTERY & ASSOCIATES
 FLORIDA REGISTRATION # AA0003381

BUILDING SECTIONS

DRAWN	CR, DR
CHECKED	CR
DATE	7-21-16
SCALE	AS NOTED
JOB NO.	2014-33
SHEET	A502

C.D. - 7-21-16