

ROOM FINISH SCHEDULE

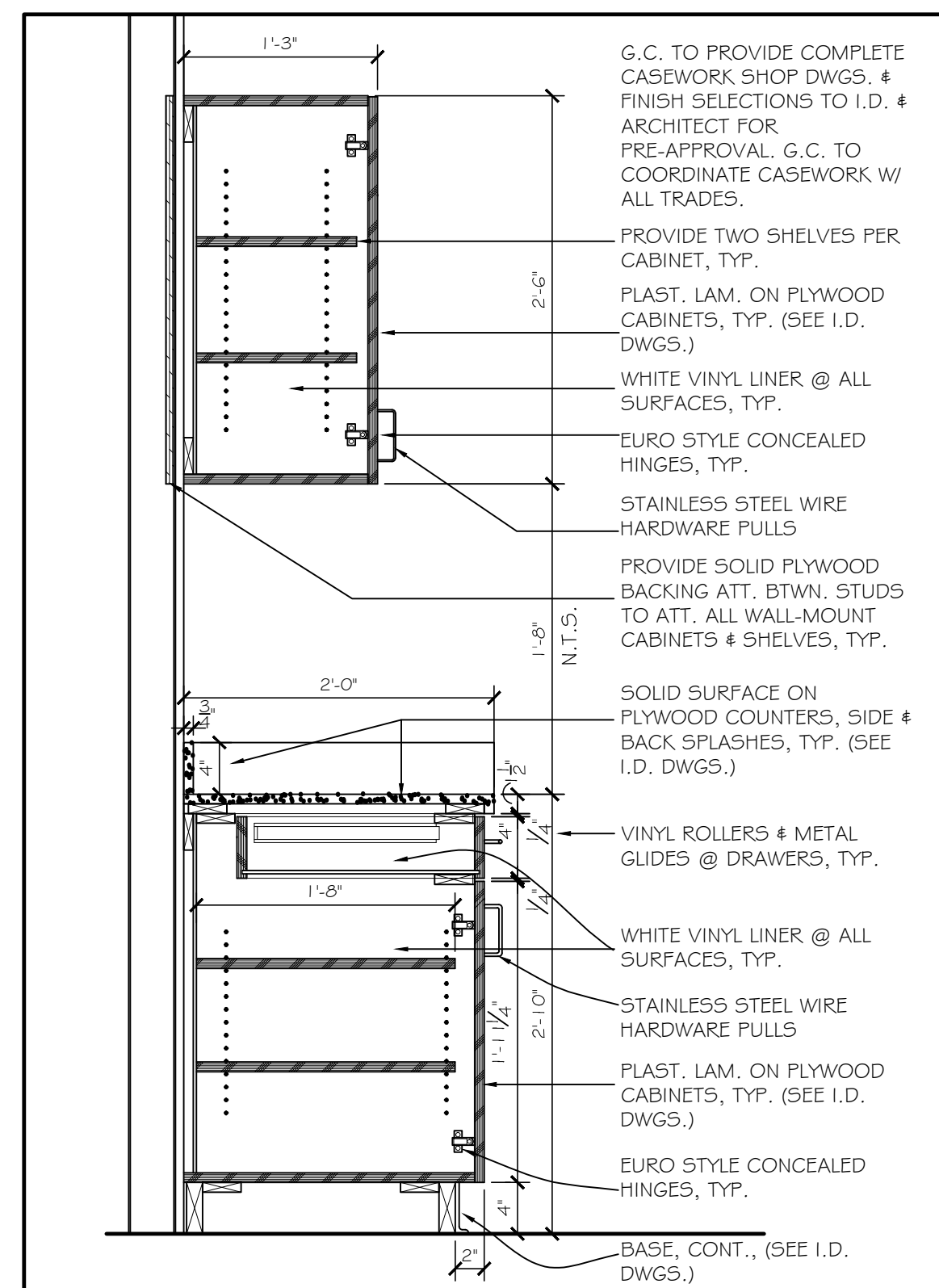
(NOTE: GC TO COORDINATE THIS SCHEDULE WITH ALL APPROVED WALL & FLOOR FINISHES ON I.D. DWGS.)

SPACE	NAME	FLOOR	BASE	WALLS				CEILING		REMARKS
				NORTH	EAST	SOUTH	WEST	FINISH	HEIGHT	
100	NEW COVERED MAIN ENTRY	BFCOFC	NA	STUCCO	STUCCO	STUCCO	STUCCO	STUCCO	+8'-4"	-
101	ENTRY VESTIBULE	P-TILE	P-TILE	PT-GWB	-	PT-GWB	PT-GWB	PT-GWB	+8'-0"	NOTE: FOLLOWING DEMO., GC TO ADVISE ARCH. # ID IF A CEILING COFFER COULD BE ACHIEVED IN VEST.
102	EXISTING MEETING ROOM	P-TILE	P-TILE	PT-GWB	PT-GWB	PT-GWB	PT-GWB	PT-GWB	+12'-0", +10'-0", +8'-0"	SEE ID DWGS. FOR TRAY CLG. DTLS.
103	NEW VESTIBULE	CARP-TI	CARP-TI	-	PT-GWB	PT-GWB	PT-GWB	PT-GWB	+9'-0"	-
104	NEW AEROBICS ROOM	RUB-FLR	RUB	PT-GWB	PT-GWB	PT-GWB	PT-GWB	ATC, PT-GWB	+10'-0", +9'-0"	-
105	NEW FITNESS ROOM	CARP-TI	CARP-TI	PT-GWB	PT-GWB	PT-GWB	PT-GWB	ATC, PT-GWB	+12'-0", +10'-0", +9'-0"	-
106	NEW NORTH COVERED ENTRY	BFCOFC	NA	STUCCO	STUCCO	STUCCO	STUCCO	STUCCO	+10'-0"	-
107	NEW VESTIBULE	CARP-TI	CARP-TI	PT-GWB	PT-GWB	PT-GWB	PT-GWB	PT-GWB	+9'-0"	-
107A	JANITOR CLOSET	P-TILE	P-TILE	EPT-MRGWB	EPT-MRGWB	EPT-MRGWB	EPT-MRGWB	PT-GWB	+9'-0"	-
108	NEW UNISEX RESTROOM #1	P-TILE	P-TILE	VWC-MRGWB	VWC-MRGWB	VWC-MRGWB	VWC-MRGWB	PT-GWB	+9'-0"	-
109	NEW UNISEX RESTROOM #2	P-TILE	P-TILE	VWC-MRGWB	VWC-MRGWB	VWC-MRGWB	VWC-MRGWB	PT-GWB	+9'-0"	-
110	NEW GYM EQUIPMENT CLOSET	P-TILE	P-TILE	PT-GWB	PT-GWB	PT-GWB	PT-GWB	PT-GWB	+9'-0"	-
111	NEW A.H.U. CLOSET	P-TILE	P-TILE	PT-GWB	PT-GWB	PT-GWB	PT-GWB	PT-GWB	+9'-0"	-
112	EXISTING HALLWAY	P-TILE	P-TILE	PT-GWB	PT-GWB	PT-GWB	PT-GWB	PT-GWB	+8'-0"	-
113	EXISTING FURNITURE STORAGE	P-TILE	P-TILE	PT-GWB	PT-GWB	PT-GWB	PT-GWB	PT-GWB	+8'-0"	-
114	EXISTING ELECT. EQUIP. ROOM	P-TILE	P-TILE	PT-GWB	PT-GWB	PT-GWB	PT-GWB	PT-GWB	+8'-0"	-
115	EXISTING MEN'S ROOM	P-TILE	P-TILE	VWC-MRGWB	VWC-MRGWB	VWC-MRGWB	VWC-MRGWB	PT-GWB	+8'-0"	-
116	EXISTING WOMEN'S ROOM	P-TILE	P-TILE	VWC-MRGWB	VWC-MRGWB	VWC-MRGWB	VWC-MRGWB	PT-GWB	+8'-0"	-
117	EXISTING WARMING KITCHEN	P-TILE	P-TILE	PT-GWB	PT-GWB	PT-GWB	PT-GWB	PT-GWB	+8'-0"	-
118	NEW COVERED PATIO	BFCOFC	NA	STUCCO	STUCCO	STUCCO	STUCCO	STUCCO	+8'-4"	-
119	NEW COVERED WALKWAY	BFCOFC	NA	STUCCO	STUCCO	STUCCO	STUCCO	STUCCO	+8'-4"	-
120	EXISTING MECH. EQUIP. CLOSET	P-TILE	P-TILE	PT-GWB	PT-GWB	PT-GWB	PT-GWB	PT-GWB	+8'-0"	-
201	TENNIS BLDG. NEW COVERED ENTRY	BFCOFC	NA	STUCCO	STUCCO	STUCCO	STUCCO	STUCCO	+8'-0"	-
202	TENNIS BLDG. NEW PRO OFFICE	P-TILE	P-TILE	PT-GWN	PT-GWN	PT-GWN	PT-GWN	PT-GWN	+8'-0"	-
202	TENNIS BLDG. EXIST. EQUIP. CLOSET	ETR	NA	ETR, RE-PAINT	ETR, RE-PAINT	ETR, RE-PAINT	ETR, RE-PAINT	ETR, RE-PAINT	+8'-0"	-

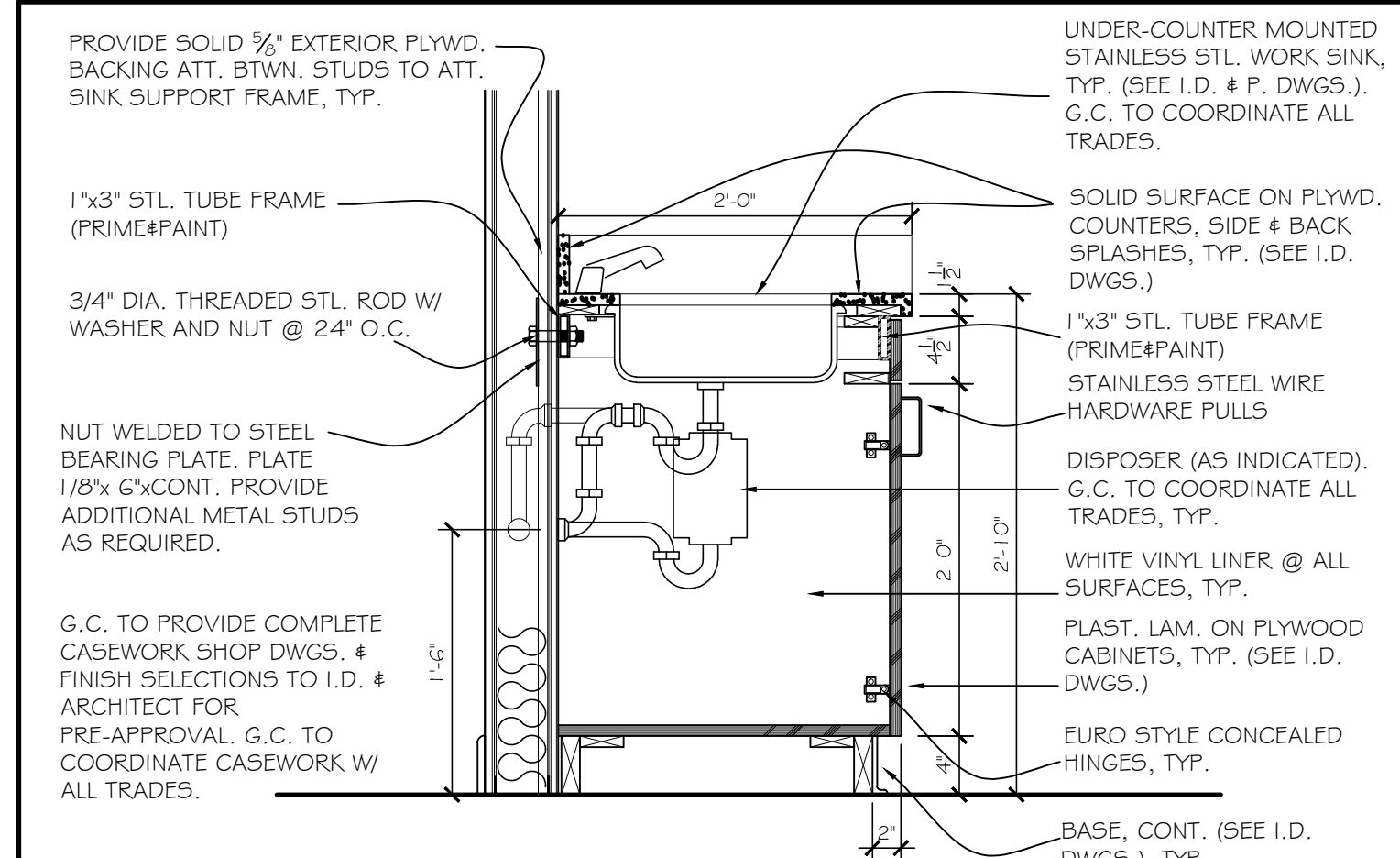
NOTE: SEE INTERIOR DESIGN DRAWINGS FOR ACTUAL FINISH MATERIAL SPECIFICATIONS, DIMENSIONS & DETAILS, TYP. BRING ANY DISCREPANCY TO THE ATTENTION OF THE INTERIOR DESIGNER & ARCHITECT PRIOR TO PLACING ANY ORDERS, TYP.

FINISH ABBREVIATIONS

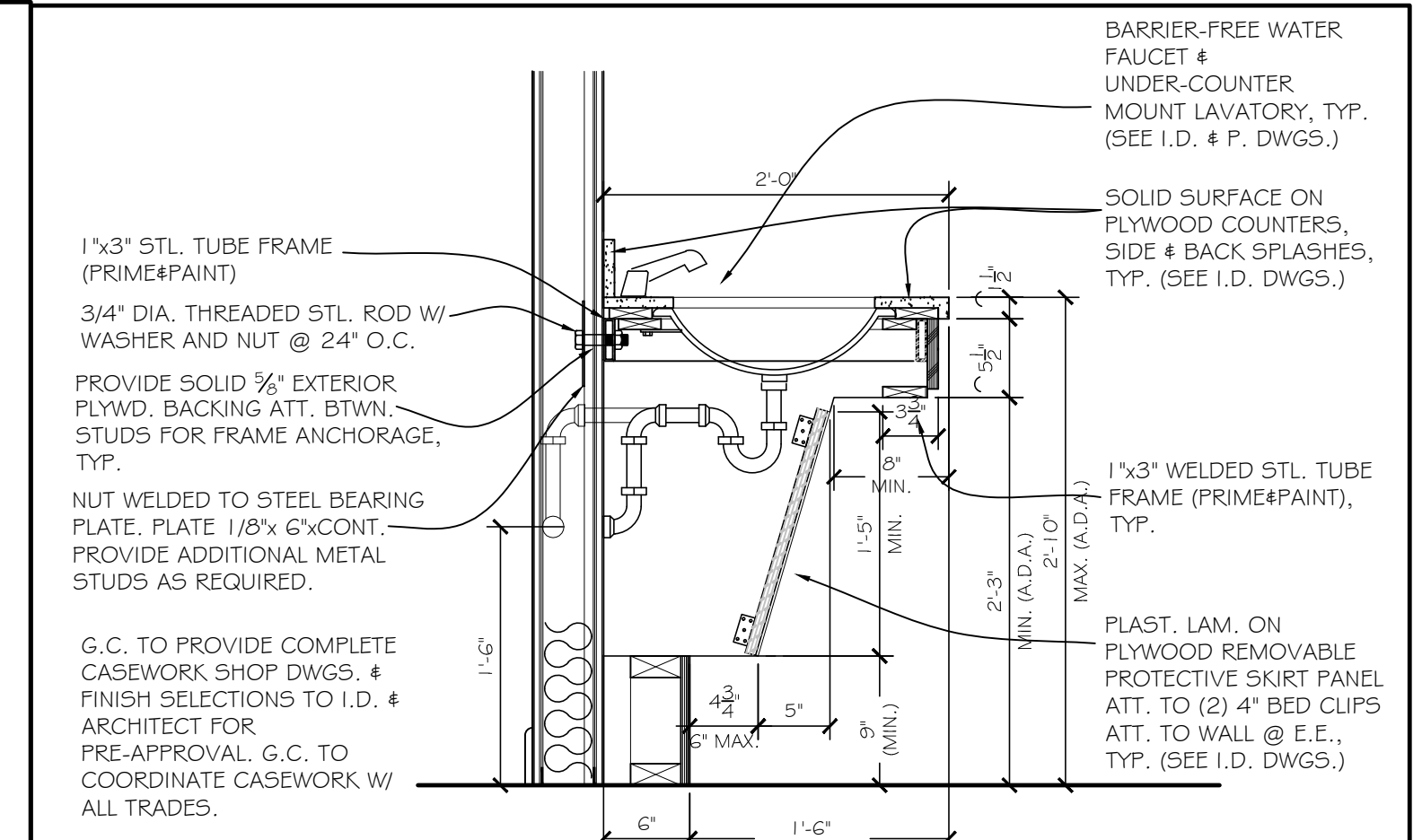
PREM-SWP ETR PT-GWB PT-MRGWB ATC EXIST P-TILE P-T COVE EPOXP	PREMIUM SIMULATED WOOD PLANK EXISTING TO REMAIN PAINTED GYPSUM WALLBOARD PAINTED MOISTURE RESISTANT GYPSUM WALLBOARD ACOUSTIC TILE & SUSPENDED METAL GRID CEILING SYSTEM EXISTING PORCELAIN TILE PORCELAIN TILE COVE BASE EPOXY PAINT	MEA VINYL VC-TILE C.M.U. FLD-VER VWC-MRGWB EPT-MRGWB CARP-TI OTS	MATCH EXISTING ADJACENT FINISH VINYL STRIP BASE VINYL COMPOSITION TILE UNFINISHED C.M.U. W/ TOOLED MORTAR JOINTS FIELD VERIFY VINYL WALL COVERING OVER MOISTURE RESISTANT G.W.B. EPOXY PAINTED MOISTURE RESISTANT G.W.B. CARPET TILE ADHESIVE BACK ADHERED OPEN TO STRUCTURE	URETH PT-WD CARP N/A - GLASS STUCCO BFCOFC	URETHANE FLUID APPLIED SEALANT OVER EXISTING OR NEW CONCRETE SLAB PROVIDED BY G.C. & INSTALL BY SYS. VENDOR PAINT GRADE WOOD CARPET & BACKING (ROLLED GOODS) NOT APPLICABLE / NONE NO SURFACE EXISTS GLASS PAINTED STUCCO BROOM FINISHED CONCRETE
--	---	--	--	---	--



1 TYPICAL CABINET DETAIL
A903 SCALE: 1" = 1'-0"



2 WORK SINK @ CABINET
A903 SCALE: 1" = 1'-0"



3 LAVATORY & COUNTER
A903 SCALE: 1" = 1'-0"

ROOM FINISH SCHEDULE AND DETAILS

REVISIONS	BY

Slattery & Associates
ARCHITECTS
PLANNERS

2060 NW BOCA RATON BLVD.
SUITE 2
BOCA RATON, FL 33431
TEL: 561-392-3848
FAX: 561-392-5402
WWW.SLATTERYARCHITECTS.COM

**WOODFIELD HUNT CLUB
CLUBHOUSE RENOVATION
AND EXPANSION**
4420 WOODFIELD BLVD.
BOCA RATON, FLORIDA

DATE OF SEAL: 7-27-16

SLATTERY & ASSOCIATES
FLORIDA REGISTRATION # AA0003381

DRAWN CR, DR
CHECKED CR
DATE 7-21-16
SCALE AS NOTED
JOB NO. 2014-33
SHEET
A903