


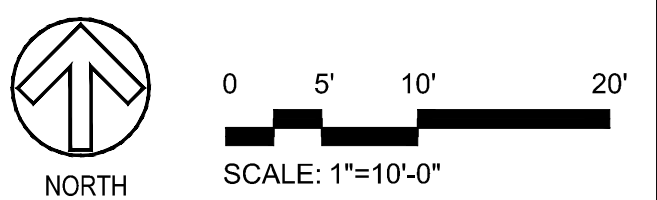


DEMOLITION NOTES:

1. THE CONTRACTOR SHALL INSTALL EROSION CONTROL MEASURES PRIOR TO STARTING DEMOLITION.
2. SITE SHALL BE CLEARED OF ANY DEBRIS, WEEDS AND GRASS PRIOR TO START OF CONSTRUCTION.
3. ANY AREAS OF CONCRETE, ASPHALT OR HARDSCAPE MATERIALS TO BE REMOVED SHALL INCLUDE THE REMOVAL OF THE BASE MATERIAL PROFILE TO A DEPTH REACHING CLEAN SOIL.
4. THE CONTRACTOR SHALL NOTIFY THE CITY OF SUNRISE PRIOR TO START OF CONSTRUCTION.
5. ALL DISTURBED AREA OUTSIDE OF SITE LIMIT AREA TO BE RESTORED.

DEMOLITION LEGEND

-  EXISTING ASPHALT TO BE REMOVED
-  EXISTING CONCRETE TO BE REMOVED
-  CLEAR AND GRUB AREA



LEAVE BLANK - FOR CITY USE ONLY

DATE:					
SCALE:					
DESIGNED BY:	DJS				
DRAWN BY:	DJS				
CHECKED BY:	DJS				
APPROVED BY:	JDH				
	DESCRIPTION	BY:	DATE:		

Craven Thompson and Associates, Inc.
 ENGINEERS • PLANNERS • SURVEYORS
 3563 N.W. 53RD STREET, FORT LAUDERDALE, FLORIDA 33309
 FAX: (954) 739-6409 TEL: (954) 739-6400
 FLORIDA LICENSED ENGINEERING, SURVEYING & MAPPING BUSINESS NO. 271
 FLORIDA LICENSED LANDSCAPE ARCHITECTURE BUSINESS NO. 0000114

**12TH STREET PARK
 RENOVATIONS**
 LOCATED AT NW 12TH STREET AND NW 58TH TERRACE SUNRISE, FL
 PREPARED FOR: CITY OF SUNRISE, FLORIDA

DEMOLITION PLAN

SEAL	DATE: 07/06/16
Douglas James Schultz Florida RLA No. LA 6666937	DRAWING NO. D-1
PROJECT #: 15-0108	