

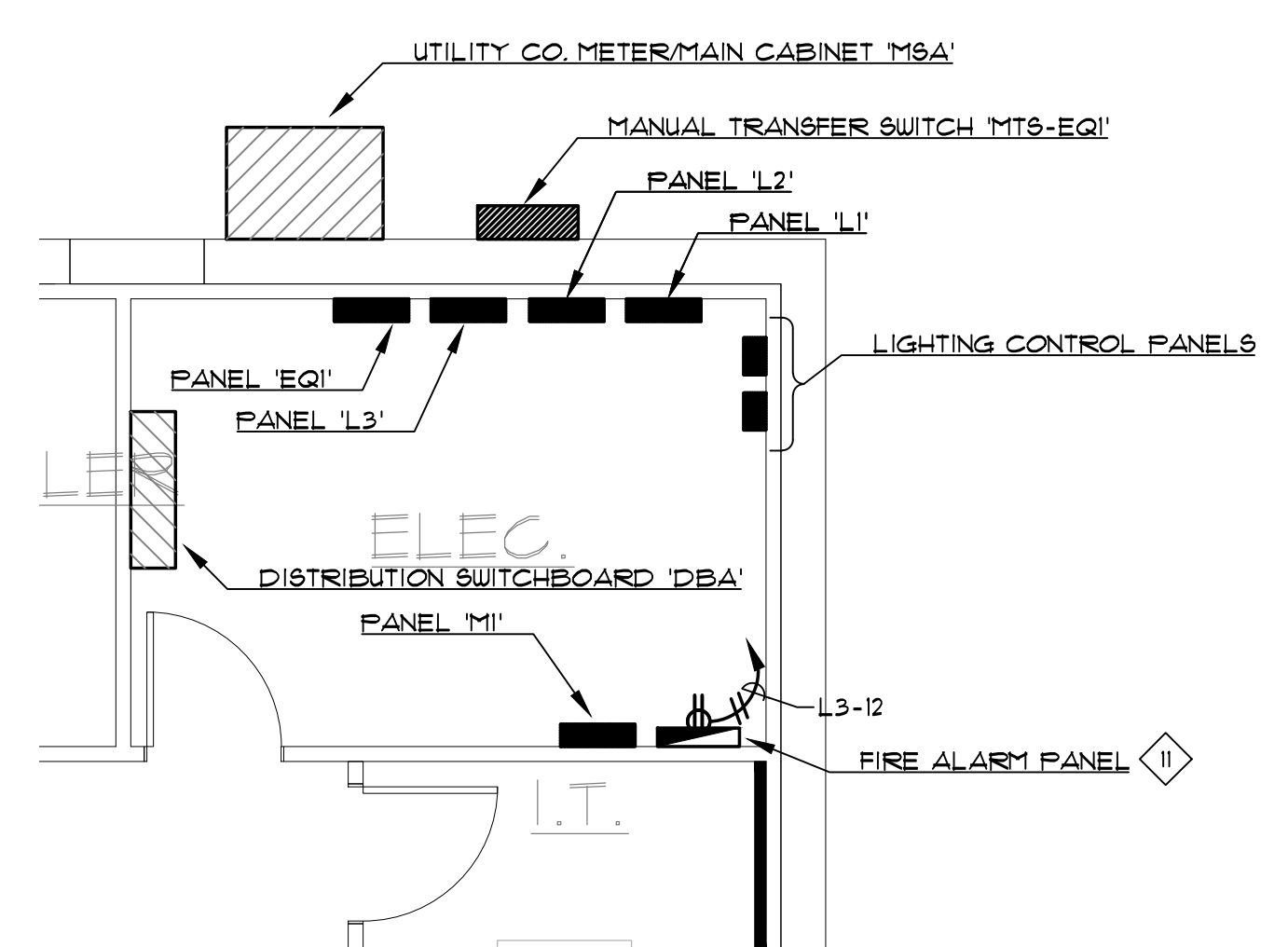
A POWER PLAN
E2.0
1/8" = 1'-0"

GENERAL NOTES:

1. THE CONTRACTOR SHALL COORDINATE THE EXACT MOUNTING LOCATION OF ALL DEVICES WITH THE ARCHITECTURAL DRAWINGS PRIOR TO ROUGH-IN.
2. ALL BRANCH CIRCUITS SHALL BE ROUTED WITH A DEDICATED NEUTRAL CONDUCTOR PER EACH PHASE CONDUCTOR.
3. ALL RECEPTACLES LOCATED IN PATIENT CARE AREAS SHALL BE HOSPITAL GRADE RECEPTACLES WITH GREEN DOT.
4. ALL BRANCH CIRCUITS INSTALLED IN PATIENT CARE AREA SHALL CONTAIN A REDUNDANT GROUNDING CONDUCTOR PER NEC ARTICLE 517. UP-SIZE CONDUIT SIZE AS NECESSARY TO ACCOMMODATE ADDITIONAL GROUND CONDUCTOR.
5. THE CONTRACTOR SHALL REFER TO ARCHITECTURAL ELECTRICAL ENLARGED PLANS ON SHEETS A95 AND A96 FOR EXACT OUTLET PLACEMENT FOR THE FOLLOWING ROOMS: PLASMA PROCESSING, CONTROL, EXAM ROOMS AND OFFICES. ARCHITECTURAL ENLARGED PLANS ARE TO TAKE PRECEDENCE FOR OUTLET LOCATIONS.
6. ALL PANELS SHALL BE PROVIDED WITH A LOCKABLE COVER.
7. ALL DEVICES AND FACEPLATES SHALL BE WHITE. THE CONTRACTOR SHALL COORDINATE BETWEEN ELECTRICAL AND LOW VOLTAGE TRADES TO ENSURE THAT POWER AND LOW VOLTAGE DEVICE AND FACEPLATES MATCH. PROVIDE SAMPLES TO TENANT FOR FINAL COLOR SELECTION.

SHEET NOTES:

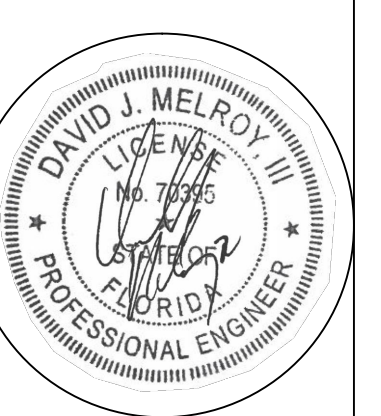
1. EXTEND AND CONNECT CIRCUITING FROM JUNCTION BOX TO OUTLETS IN AREA WITH SAME CIRCUIT NUMBERS, ROUTE #2 CONDUCTORS (MINIMUM) THROUGHOUT, UNLESS NOTED OTHERWISE.
2. JUNCTION BOX FOR CONNECTION TO FREEZER DRAIN HEATERS. VERIFY EXACT LOCATION AND CONNECTION REQUIREMENTS WITH FREEZER SHOP DRAWINGS. PROVIDE RECEPTACLE AND CORD CAP AS REQUIRED. INCLUDE 1/2" CONDUIT WITH 2 #4 TO PRESSURE RELIEF VALVE AND 1/2" CONDUIT WITH 2 #2 TO DOOR FRAME HEATER.
3. JUNCTION BOX FOR CONNECTION TO HAND DRYERS. VERIFY EXACT MOUNTING LOCATION AND CONNECTION REQUIREMENTS WITH THE MANUFACTURER'S INSTALLATION INSTRUCTIONS.
4. JUNCTION BOX FOR CONNECTION TO FREEZER LIGHTS. VERIFY EXACT MOUNTING LOCATION AND CONNECTION REQUIREMENTS WITH FREEZER SHOP DRAWINGS. ELECTRICAL CONTRACTOR SHALL MOUNT FREEZER LIGHTS PER APPROVED SHOP DRAWINGS.
5. THE CONTRACTOR SHALL PROVIDE CONNECTION FROM OUTDOOR UNIT (ON ROOF) TO INDOOR UNIT. PROVIDE POWER AND CONTROL CONDUITS AND CONDUCTORS PER FREEZER SHOP DRAWINGS.
6. PROVIDE NEMA-L5-30R FOR DATA RACK UPS EQUIPMENT. VERIFY EXACT MOUNTING LOCATION WITH THE IT EQUIPMENT INSTALLER PRIOR TO ROUGH-IN.
7. DELIVERY PUSH BUTTON AND CHIME. COORDINATE EXACT MOUNTING LOCATIONS AND MOUNTING HEIGHTS WITH THE OWNER'S REPRESENTATIVE PRIOR TO ROUGH-IN.
8. PROVIDE RECEPTACLE FOR FREEZER TEMPERATURE MONITORING EQUIPMENT. VERIFY EXACT MOUNTING LOCATION WITH THE FREEZER SHOP DRAWINGS PRIOR TO ROUGH-IN.
9. DEVICES ARE MOUNTED IN A MULTI-COMPARTMENT FLOOR BOX. REFER TO E21 FOR ADDITIONAL INFORMATION. COORDINATE COVER PLATE STYLE WITH THE INSTALLED FLOOR COVERING IN ORDER TO PROVIDE A FLUSH FLOOR INSTALLATION.
10. PROVIDE RECEPTACLE FOR VENDING MACHINE. COORDINATE EXACT MOUNTING LOCATION WITH THE INSTALLED EQUIPMENT SHOP DRAWINGS.
11. SUGGESTED LOCATION FOR FIRE ALARM PANEL. VERIFY EXACT MOUNTING LOCATION WITH THE FIRE ALARM DESIGNER. PROVIDE DUPLEX RECEPTACLE FOR FIRE ALARM PANEL.
12. DEVICES MOUNTED IN MILLWORK. COORDINATE DEVICE LOCATION, CONDUIT ENTRY, ETC. WITH THE MILLWORK SHOP DRAWINGS.
13. PROVIDE RECEPTACLE FOR SOUND BAR. VERIFY EXACT MOUNTING LOCATION WITH THE ARCHITECTURAL ELEVATIONS PRIOR TO ROUGH-IN.
14. PROVIDE JUNCTION BOX FOR 120V CONNECTION TO FREEZER THERMOSTATS. VERIFY EXACT MOUNTING LOCATION WITH APPROVED SHOP DRAWINGS. ROUTE 18 GAUGE SHIELDED 2 CONDUCTOR CABLE FROM THERMOSTAT TO RESPECTIVE FREEZER TEMPERATURE SENSOR (ONE FOR EACH FREEZER).
15. PROVIDE CONNECTION FROM INDOOR UNIT TO OUTDOOR UNIT PER THE MANUFACTURER'S INSTALLATION INSTRUCTIONS.
16. AREA NOT IN SCOPE.
17. MICROWAVE OUTLET TO BE MOUNTED IN CABINET BELOW. VERIFY EXACT MOUNTING LOCATION WITH THE ARCHITECTURAL DRAWINGS PRIOR TO ROUGH-IN.
18. MICROWAVE OUTLET TO BE MOUNTED IN CABINET ABOVE. VERIFY EXACT MOUNTING LOCATION WITH THE ARCHITECTURAL DRAWINGS PRIOR TO ROUGH-IN.



B ENLARGED ELECTRICAL PLAN
E2.0
1/4" = 1'-0"

ACKAL A PROFESSIONAL CORPORATION
ARCHITECTS
105 CHAPEL DRIVE - LAFAYETTE, LOUISIANA 70506
337-988-5271 ph. - 337-988-5272 fax
www.ackalarchitects.com

INTERIOR TENANT IMPROVEMENT FOR:
IMMUNOTEK BIO CENTERS, LLC
4550 LAKE NORTH ROAD
OFFICE DEPOT PLAZA, SUITE B-5
LAKE WORTH, PALM BEACH COUNTY, FL 33463



AUG. 02, 2016
COPYRIGHT © 2016 ACKAL ARCHITECTS, APC.
THIS DOCUMENT IS THE PROPERTY OF ACKAL ARCHITECTS, APC.
THIS DOCUMENT MAY NOT BE COPIED, REPRODUCED OR USED WITHOUT WRITTEN CONSENT FROM ACKAL ARCHITECTS, APC.

proj. no. 16-002
date: 08-02-2016
project architect: B.A.
project manager: A.D.
drawn by: MSA
file name: LAKEWORTH
revised:

plot scale: AS NOTED
sheet name:
POWER PLAN

sheet no.
E2.0

