

X:\2016 Projects\Slattery & Associates\16104_Woodfield Hunt Club Renovation\MEP\16-06-30_TN\16104.E2.1.dwg, E2.1, 7/21/2016 4:33:22 PM, TNguyen

REVISIONS	BY

Slattery & Associates
ARCHITECTS PLANNERS
 2060 NW BOCA RATON BLVD.
 SUITE 2
 BOCA RATON, FL 33431
 TEL: 561-392-3848
 FAX: 561-392-5402
 WWW.SLATTERYARCHITECTS.COM

WOODFIELD HUNT CLUB
CLUBHOUSE RENOVATION
AND EXPANSION
 4420 WOODFIELD BLVD.
 BOCA RATON, FLORIDA

PERMIT SET: 07/21/16

DRAWN: DB/FR/AB
 CHECKED: UI/SR/DA/UB
 DATE: 07-21-16
 SCALE: AS NOTED
 JOB NO.: 16104
 SHEET

E2.1

PERMIT - 7-21-16

SEE SHEET E0.1 FOR ALL LIGHTING NOTES, SYMBOL LEGEND, AND GENERAL NOTES.

WOODFIELD HUNT CLUB LIGHTING FIXTURE SCHEDULE									
TYPE	DESCRIPTION	MFR	CATALOG NUMBER	VOLTS	LAMPS	WATTS	MOUNTING	REMARKS	
A	4" LED DOWNLIGHT	EATON	LD4A09D010TE-ERM4A08830-4LM1H	UNV	LED	14.1	RECESSE D		
AEM	4" LED DOWNLIGHT W/ EMERGENCY BATTERY BACK UP	EATON	LD4A09D010TE-ERM4A08830-4LM1EH	UNV	LED	14.1	RECESSE D	NOTE 1	
A1	4" LED DOWNLIGHT	EATON	LD4A09D010TE-ERM4A08830-4LM1W	UNV	LED	14.1	RECESSE D		
A1-EM	4" LED DOWNLIGHT W/ EMERGENCY BATTERY BACK UP	EATON	LD4A09D010TE-ERM4A08830-4LM1EW	UNV	LED	14.1	RECESSE D	NOTE 1	
B	6" LED EXTERIOR RATED DOWNLIGHT	EATON	LD6A20D010TE-ERW6A20830-6LW1H-LGSK18IP66	UNV	LED	31.5	RECESSE D		
B-EM	6" LED EXTERIOR RATED DOWNLIGHT W/EMERGENCY BATTERY BACK UP	EATON	LD6A20D010TE-ERW6A20830-6LW1EH-LGSK18IP66	UNV	LED	31.5	RECESSE D	NOTE 1	
C1	6" LED DOWNLIGHT	HALO COMMERCIAL	PD610ED010-PDM6A830-61VH	UNV	LED	18	RECESSE D		
C2	6" LED DOWNLIGHT	HALO COMMERCIAL	PD615ED010-PDM6A830-61VH	UNV	LED	18	RECESSE D		
D	4" LED DOWNLIGHT	HALO	H457CAT1E010-EL408930-TL410H	UNV	LED	14	RECESSE D		
F	1'x4' SURFACE LINEAR LUMINAIRE	NEW STAR	VIC4N-L340-RW-UN-WH	UNV	LED	75	SURFACE		
G	UNDER CABINET LIGHTING	COOPER EATON	HU10090930MB	UNV	LED	5	SURFACE		
L-1	LINEAR PENDANT	EATON CORELITE	12-WS-1L30-1D-UNV-8-STD	UNV	LED	12	PENDANT		
L-2	LINEAR PENDANT	EATON CORELITE	12-WS-1L30-1D-UNV-4-STD	UNV	LED	12	PENDANT		
L-3	CEILING FAN	T.B.D.	T.B.D.	120V					
L-4	CEILING FAN	T.B.D.	T.B.D.	120V					
L-11	CEILING FAN	T.B.D.	T.B.D.	120V					
L-10	1'x4' SURFACE LINEAR LUMINAIRE	NEW STAR	VIC4N-L340-RW-UN-WH	UNV	LED	75	SURFACE		
L-12	CYLINDRICAL WALL DOWNLIGHT	LIGMAN	UJE-31741-W-W30	UNV	LED	30	WALL		
L-13	EXTERIOR WET LOCATION RATED WALL SURFACE-MOUNT L.E.D. SCONCE LIGHT, TYP.	T.B.D.	T.B.D.	UNV	LED		SURFACE		
L-14	INTERIOR DAMP RATED WALL SURFACE-MOUNT L.E.D. SCONCE LIGHT, TYP.	T.B.D.	T.B.D.	UNV	LED		SURFACE		
L-15	CYLINDRICAL WALL DOWNLIGHT	LIGMAN	UJE-31741-W-W30	UNV	LED	30	WALL		
L-16	2'x2' TROFFER LED MODULE	EATON	22EN-LD2-25-UNV-L830-CD1-U	UNV	LED	20	RECESSE D		
L-16-EM	2'x2' TROFFER LED MODULE W/EMERGENCY BATTERY BACK UP	EATON	22EN-LD2-25-UNV-EL14W-L830-CD1-U	UNV	LED	20	RECESSE D	NOTE 1	
X	OWNER SELECTED			UNV	LED	5			
EM	OWNER SELECTED			UNV	LED	5			

FIXTURE SCHEDULE NOTES

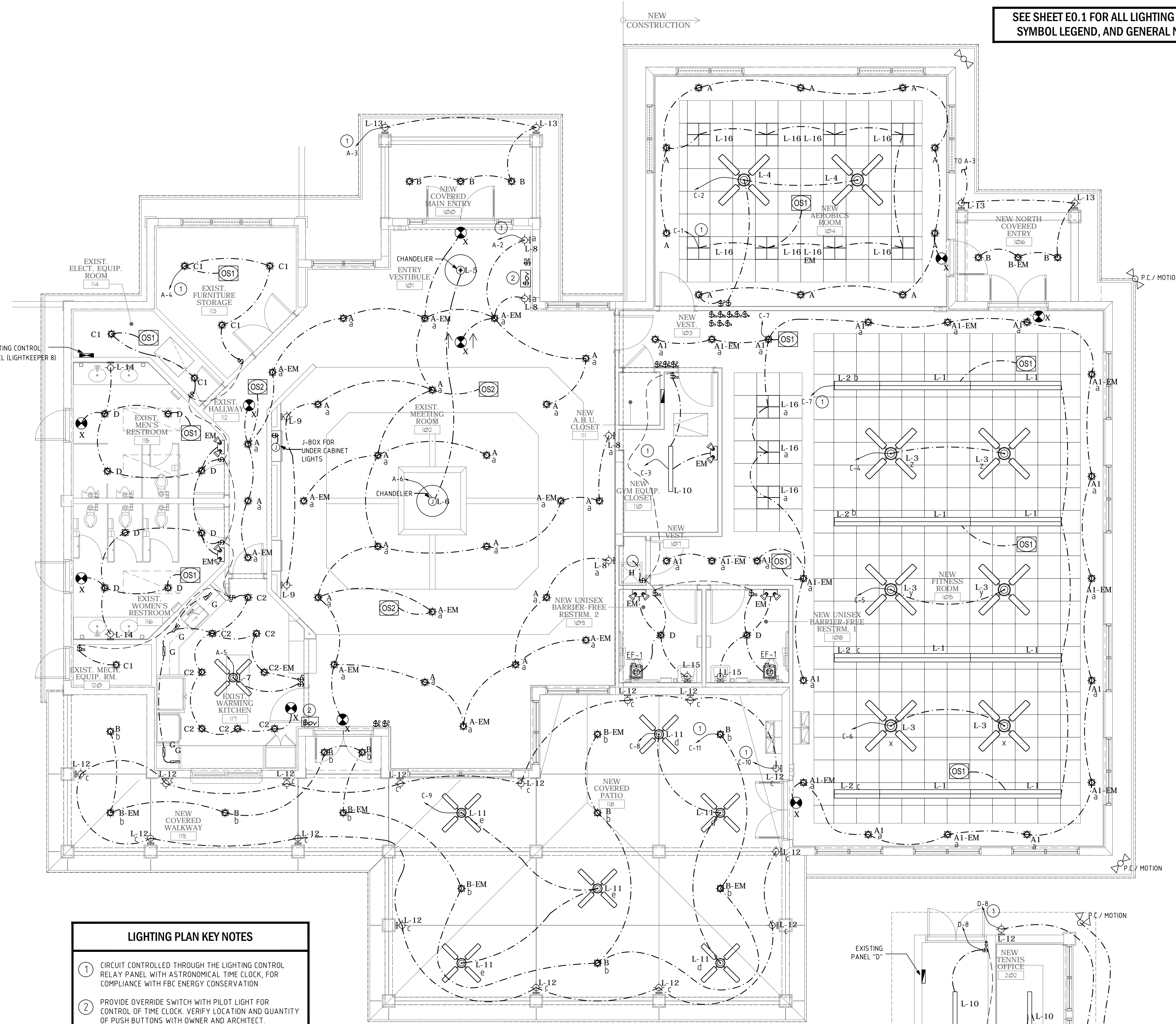
- WITH BATTERY PACK
 - MINIMUM LAMP COLOR TEMPERATURE SHALL BE 3500K.
 - SEE LIGHTING PLAN FOR EXIT SIGN CHEVRON REQUIREMENTS.
 - COORDINATE ALL LIGHTING FIXTURE TYPES WITH ARCHITECT PRIOR TO BID/PURCHASE.
- FOR QUESTIONS PERTAINING TO THIS FIXTURE SCHEDULE PLEASE CONTACT RYAN HUFF @ LIGHTING DYNAMICS- 772-285-7189

INTERIOR LIGHTING POWER ALLOWANCE PER FLORIDA BUILDING CODE

CALCULATIONS HAVE BEEN MADE TO VERIFY THAT LIGHTING LEVELS COMPLY WITH ENERGY CONSERVATION CODE, ENERGY SECTION OF THE 2014 FLORIDA BUILDING CODE

ROOM NAME	ROOM NUMBER	ALLOWED	USED
MEETING ROOM	102	1.2 W/SQ FT * 1258 SQ FT = 1510 WATTS	490.2 WATTS
FURNITURE STORAGE	113	0.8 W/SQ FT * 138 SQ FT = 110 WATTS	54.0 WATTS
MECH EQUIPMENT RM	114	1.1 W/SQ FT * 57 SQ FT = 63 WATTS	36.0 WATTS
HALLWAY	112	0.7 W/SQ FT * 82 SQ FT = 57 WATTS	42.3 WATTS
RESTROOMS	115, 116	1.0 W/SQ FT * 302 SQ FT = 302 WATTS	172.0 WATTS
FURNITURE STORAGE	119	0.8 W/SQ FT * 28 SQ FT = 22 WATTS	18.0 WATTS
WARMING KITCHEN	117	1.2 W/SQ FT * 200 SQ FT = 240 WATTS	169.0 WATTS
UNISEX BATHROOMS	108, 109	1.0 W/SQ FT * 121 SQ FT = 121 WATTS	88.0 WATTS
FITNESS ROOM	105	0.9 W/SQ FT * 1367 SQ FT = 1230 WATTS	369.6 WATTS
GYM EQUIP. CLOSET	110	0.8 W/SQ FT * 122 SQ FT = 98 WATTS	75.0 WATTS
VESTIBULE	103, 105	1.1 W/SQ FT * 228 SQ FT = 251 WATTS	126.9 WATTS
AEROBICS ROOM	104	0.9 W/SQ FT * 580 SQ FT = 522 WATTS	253.8 WATTS

TOTAL ALLOWED: 4526 WATTS
 TOTAL USED: 1894.8 WATTS

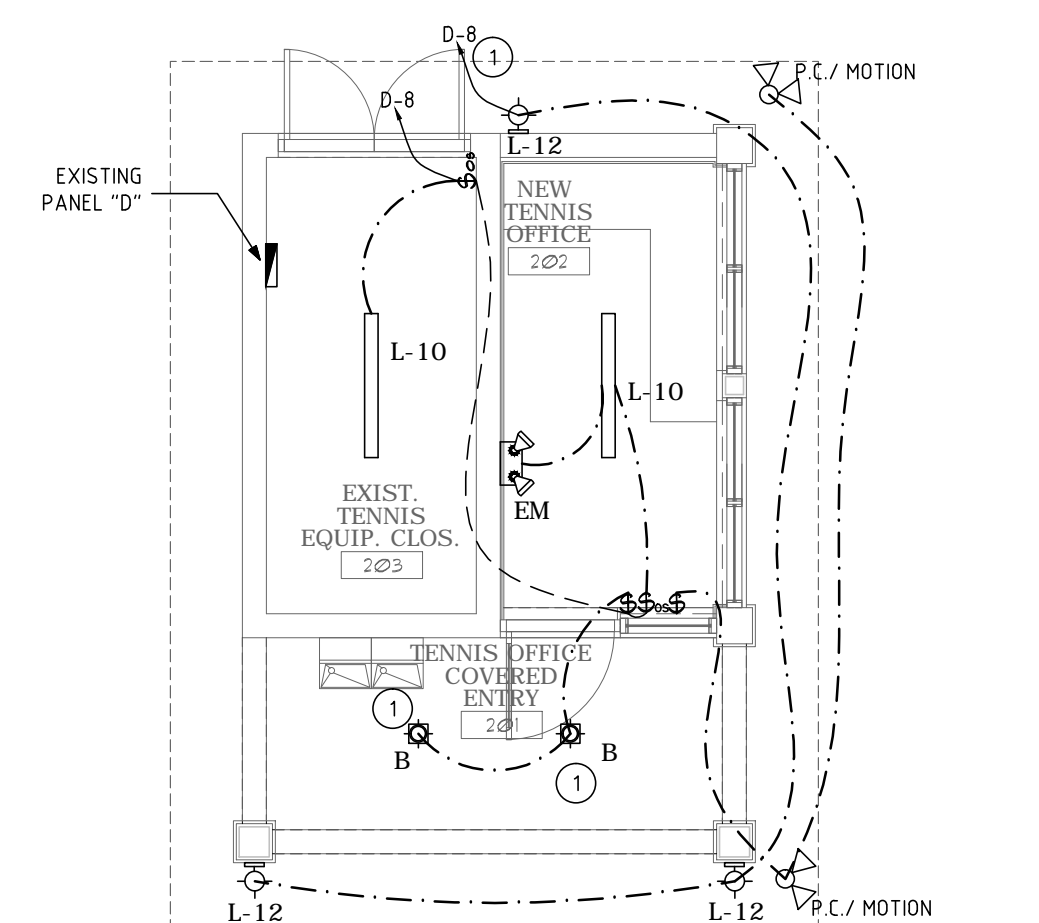


- LIGHTING PLAN KEY NOTES**
- CIRCUIT CONTROLLED THROUGH THE LIGHTING CONTROL RELAY PANEL WITH ASTRONOMICAL TIME CLOCK, FOR COMPLIANCE WITH FBC ENERGY CONSERVATION
 - PROVIDE OVERRIDE SWITCH WITH PILOT LIGHT FOR CONTROL OF TIME CLOCK. VERIFY LOCATION AND QUANTITY OF PUSH BUTTONS WITH OWNER AND ARCHITECT

- LIGHTING PLAN NOTES**
- CAPITAL LETTERS NEXT TO FIXTURES SHOWN ON FLOOR PLAN DESIGNATE FIXTURE TYPES. REFER TO LIGHTING FIXTURE SCHEDULE.
 - SMALL CASE LETTERS NEXT TO FIXTURES SHOWN ON FLOOR PLAN DESIGNATE SWITCH CIRCUITS.

NOTE: GENERAL CONTRACTOR TO FIELD COORDINATE WITH SUBS. AND INTERIOR DESIGNER FOR EXACT LOCATIONS OF HVAC CEILING GRILLES AND LIGHT FIXTURES.

LIGHTING PLAN
 CLUBHOUSE BUILDING
 SCALE: 3/16" = 1'-0"



LIGHTING PLAN
 TENNIS BLDG. NEW OFFICE
 SCALE: 3/16" = 1'-0"

To Lighting loads

LiteKeeper 8
 120V/277V Transformer Power Dedicated Circuit

Lighting Control Panel
 with 8 relays and astronomical time-clock for control of exterior lighting

Cables

□	RS232	RS-232 Cable (6 feet), provided with product
○	CAN	Use Cooper Controls LCCNP non-plenum cable or LCCP plenum cable.
◇	LV3	Low Voltage Input wire - #18 AWG, 3 conductor wire

PRIOR TO SUBMITTING THE BID, THE CONTRACTOR SHALL FIELD VERIFY ALL EXISTING CONDITIONS AND INFORM THE ARCHITECT AND THE ENGINEER OF ANY DISCREPANCY BETWEEN THESE DOCUMENTS AND THE EXISTING CONDITIONS AND SHALL INCLUDE IN THE BID TO CORRECT THE SAME AS DIRECTED. THE ENGINEER AND THE ARCHITECT, ARE NOT RESPONSIBLE FOR ANY ADDITIONAL COSTS RESULTING FROM VERIFIABLE EXISTING CONDITIONS DISCOVERED AFTER CONTRACT HAS BEEN AWARDED. NO CHANGES SHALL BE MADE TO THESE PLANS WITHOUT PRIOR APPROVAL FROM THE ENGINEER OF RECORD. ALL CHANGES SHALL BE SUBMITTED FOR REVIEW PRIOR TO INSTALLATION. NOT FOR BID UNTIL PERMIT HAS BEEN ISSUED.

FAE CONSULTING

700 WEST HILLSBORO BLVD., BLDG. #1, SUITE 204
 DEERFIELD BEACH, FLORIDA 33441
 TEL: (561) 391-9292 FAX: (561) 391-9898
 CERTIFICATE OF AUTHORIZATION NO. 28107
 URSULA IARRATE, P.E. LICENSE #73122
 STEPHEN F. ROLLIN, P.E. LICENSE #36428
 DONALD H. AUSTIN, JR., P.E. LICENSE #60651
 JASON BARBER, P.E. LICENSE #73050
 E-MAIL: INFO@FAECONSULTING.COM
 DESIGNED BY: DB/FR/AB PM: KS P/N: 16104