

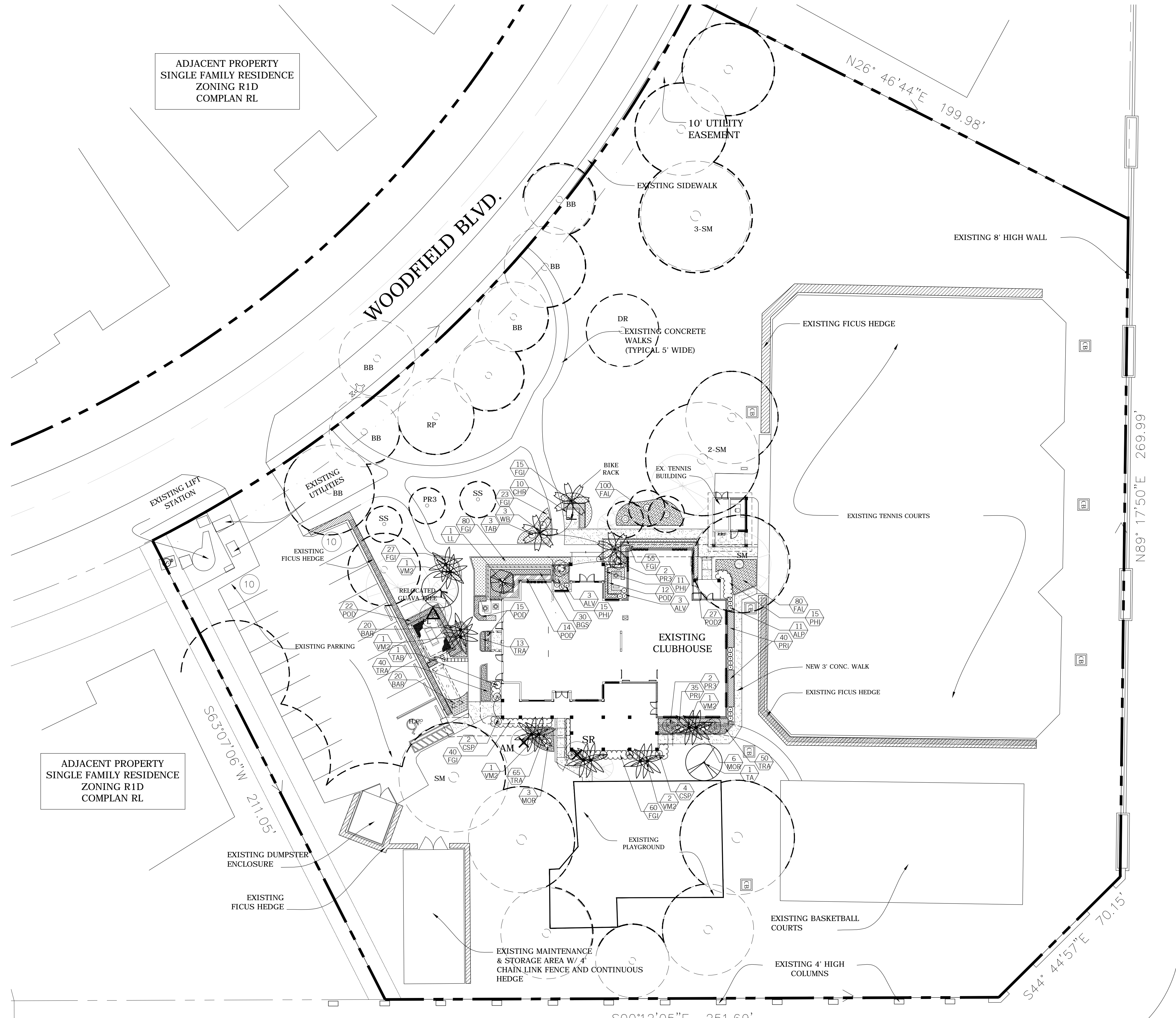
| REVISIONS | BY |
|-----------|----|
| | |
| | |
| | |
| | |
| | |

Slattery & Associates
ARCHITECTS
PLANNERS
2060 NW BOCA RATON BLVD.
SUITE 2
BOCA RATON, FL 33431
TEL: 561-392-3848
FAX: 561-392-5402
WWW.SLATTERYARCHITECTS.COM

**WOODFIELD HUNT CLUB
CLUBHOUSE RENOVATION
AND EXPANSION**
4420 WOODFIELD BLVD.
BOCA RATON, FLORIDA

DRAWN
CR, DR
CHECKED
CR
DATE
7-21-16
SCALE
AS NOTED
JOB NO.
2014-33
SHEET
LP-1

C.D. - 7-21-16



IRRIGATION NOTES
Contractor to modify existing irrigation system to accommodate new hardscape and provide 100% coverage to all plants using approved water source.

TREES AFFECTED BY CONSTRUCTION

| KEY | NAME | RELOCATE QTY. | RELOCATE CAL. IN. | REMOVE QTY. | REMOVE CAL. IN. |
|-----|---------------|---------------|-------------------|-------------|-----------------|
| AM | ADONIDIA PALM | - | - | 1 | - |
| SR | QUEEN PALM | - | - | 1 | - |

EXISTING TREE KEY

| KEY | NAME |
|-----|-----------------|
| BB | BLACK OLIVE |
| DR | ROYAL POINCIANA |
| RP | ROYAL PALM |
| SM | MAHOGANY |
| SR | QUEEN PALM |
| SS | CASSIA |
| PR3 | DWARF DATE PALM |

- TREE KEY**
- EXISTING TREE TO REMAIN
 - EXISTING TREE TO BE RELOCATED
 - EXISTING TREE TO BE REMOVED

PLANT LIST

| KEY | QTY | PLANT AND SPECIFICATION |
|---|-----|---|
| TREES AND PALMS | | |
| VM2 | 6 | Veitchia montgomeryana (Montgomery Palm) 22' oa. ht., double trunk, matched, full |
| WB | 3 | Veitchia montgomeryana (Montgomery Palm) 10' ct., 16' ht., triple trunk, full |
| ** LIG | 1 | Ligustrum lucidum (Ligustrum Tree) 8-10' ht., 8' spr., full canopy |
| ** TA | 1 | Tabebuia caroba (Yellow Tabebuia) 14' ht., 8' spr., 6' c.t. full |
| KEY QTY PLANT AND SPECIFICATION | | |
| SHRUBS, GROUNDCOVERS AND ACCENTS | | |
| ALP | 11 | Alpinia purpurata (Red Shell Ginger) 24" ht., 36" spr., full, heavy, red |
| ALV | 6 | Alpinia zerumbet 'variegata' (Variegated Shell Ginger) 24" ht., 36" spr., full, heavy, |
| ** BGS | 30 | Bougainvillea s. 'silhouette' (Dwarf Purple Silhouette Bougainvillea) 18" ht., 18" spr., 2' o.c |
| BAR | 40 | Barleria repens (Coral Creeper) 16" ht., 16" spr., 18" o.c. |
| ** N CHR | 10 | Chrysobalanus icaco (Cocoplum) 24" ht., 24" spr., full, 24" o.c. |
| CSP | 6 | Codiaeum spp. Sloppy Painter (Sloppy Painter Croton) 24" ht., 24" spr., full |
| ** FGI | 300 | Ficus microcarpa 'Green Island' (Ficus Green Island) 12" ht., 12" spr., full, 18" o.c. |
| ** FAL | 180 | Nephrolepis falcatum (Holly Fern) 12" ht., 12" spr., full, 18" o.c. |
| MOR | 9 | Dietes bicolor (Yellow African Iris) 18" ht., 18" spr., full, 18" o.c. |
| ** PR | 4 | Phoenix roebellenii (Dwarf Date Palm) 5' ht., triple, matched |
| PHI | 34 | Philodendron 'burle marx' (Burle Marx Philodendron) 18" ht., 20" spr., full, 24" o.c. |
| POD | 37 | Podocarpus macrophyllus (Podocarpus) 36" ht., 20" spr., full, 24" o.c. |
| POD | 53 | Podocarpus macrophyllus (Podocarpus) 5' ht., 24" spr., full, 24" o.c. |
| PRI | 75 | Podocarpus macrophyllus 'Pringles' (Dwarf Podocarpus) 18" ht., 18" spr., full, 18" o.c. |
| TAB | 4 | Tabernaemontana spp. (Pinwheel Jasmine) 24" ht., 24" spr., full, 3' o.c. |
| TRA | 168 | Trachelospermum asiaticum (Dwarf Jasmine) 4" ht., 8" spr., 12" o.c. |
| SOD | | St. Augustine 'Palmetto', contractor to determine quantity. |
| MULCH | | Black Mulch, 3" depth, contractor to determine quantity. |

N DENOTES NATIVE SPECIES
** DENOTES DROUGHT TOLERANT SPECIES

XERISCAPE CALCS
CITY OF BOCA RATON C.A.B.
XERISCAPE POINT SYSTEM

| Item | Points Available | Quantities This Plan | Points This Plan |
|--|------------------|----------------------|------------------|
| Irrigation System | 5 | | 5 |
| Moisture Sensitive Controller | 5 | | 0 |
| Plan submitted with low moderate and high water usage zoning indicated. | | | |
| Shrubs | 5 | | 0 |
| 25% to 50% of the total quantity of plants from the list | 10 | 96% | 10 |
| 51% to 100% of the total quantity of plants from the list | | | |
| *List defined as "very drought tolerant" in S.F.W.M. Xeriscape Plant Guide | | | |
| Trees | 5 | | 0 |
| 25% to 50% of the total quantity of plants from the list | 10 | 100% | 10 |
| 51% to 100% of the total quantity of plants from the list | | | |
| Extra Shade/Canopy Trees in Vehicular Use Areas | 5 | | 0 |
| 25% more than required | 10 | | 0 |
| 40% more than required | | | |
| total required X | | | |
| total provided X ex. X new =X | | | |
| Sod Areas | 5 | | 5 |
| Sod area less than 60% of Landscape Area | | | |
| TOTAL POINTS | | | 30 |

LANDSCAPE PLAN

SCALE: 1"=20'-0"

