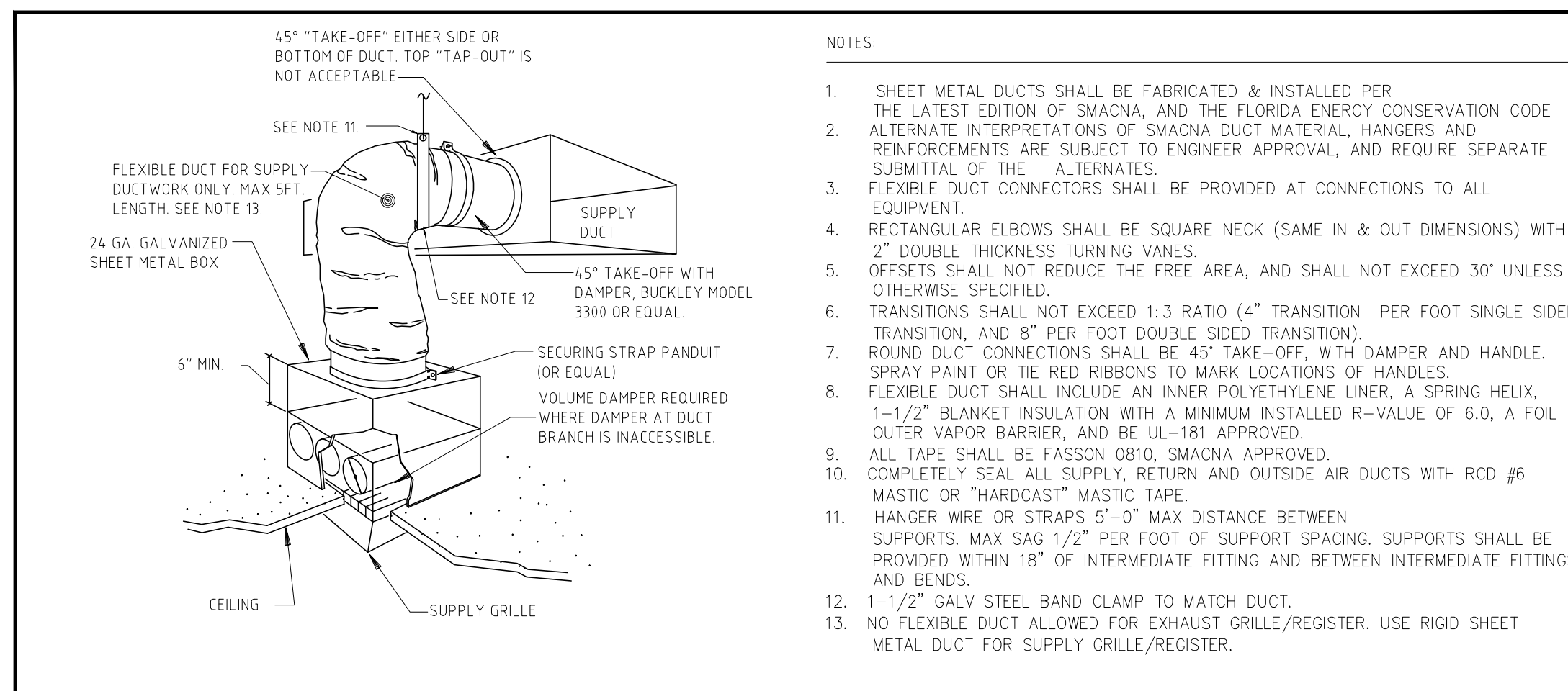
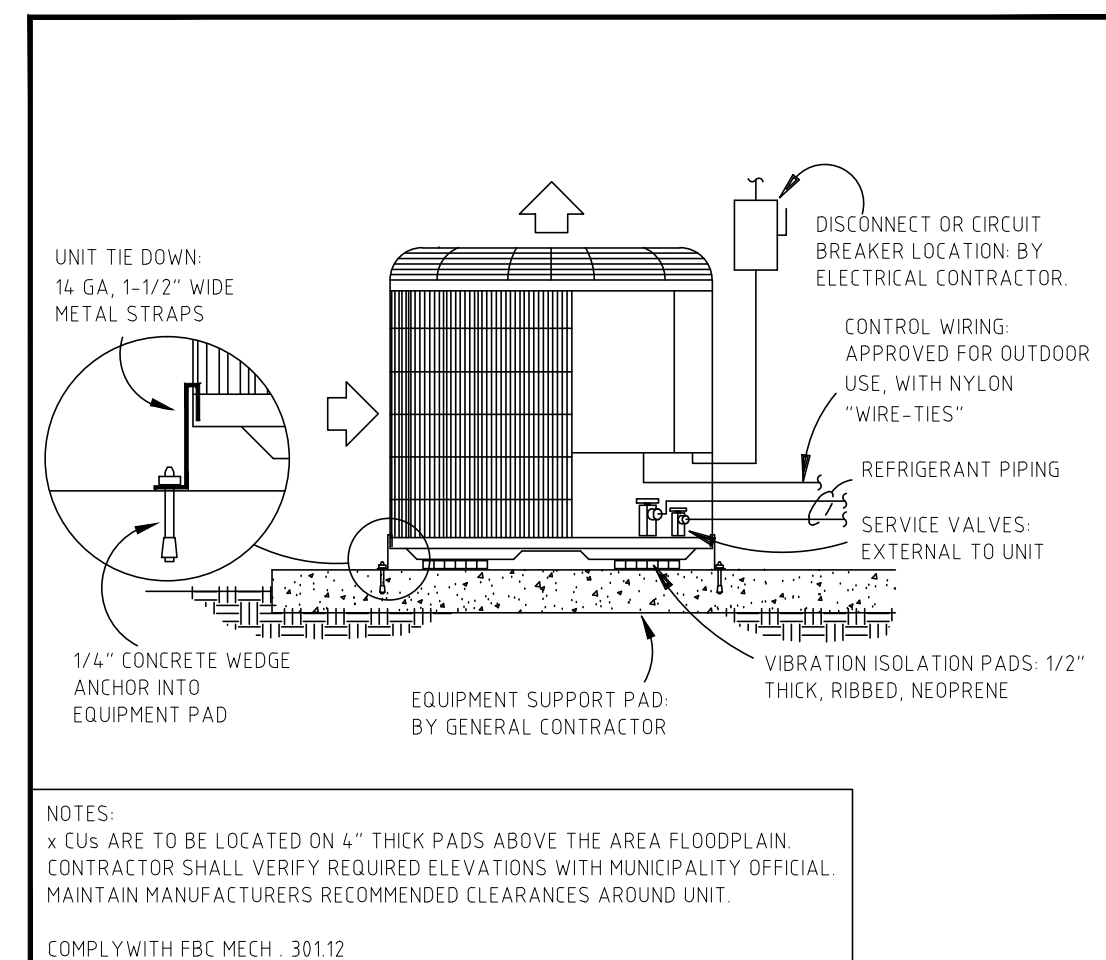


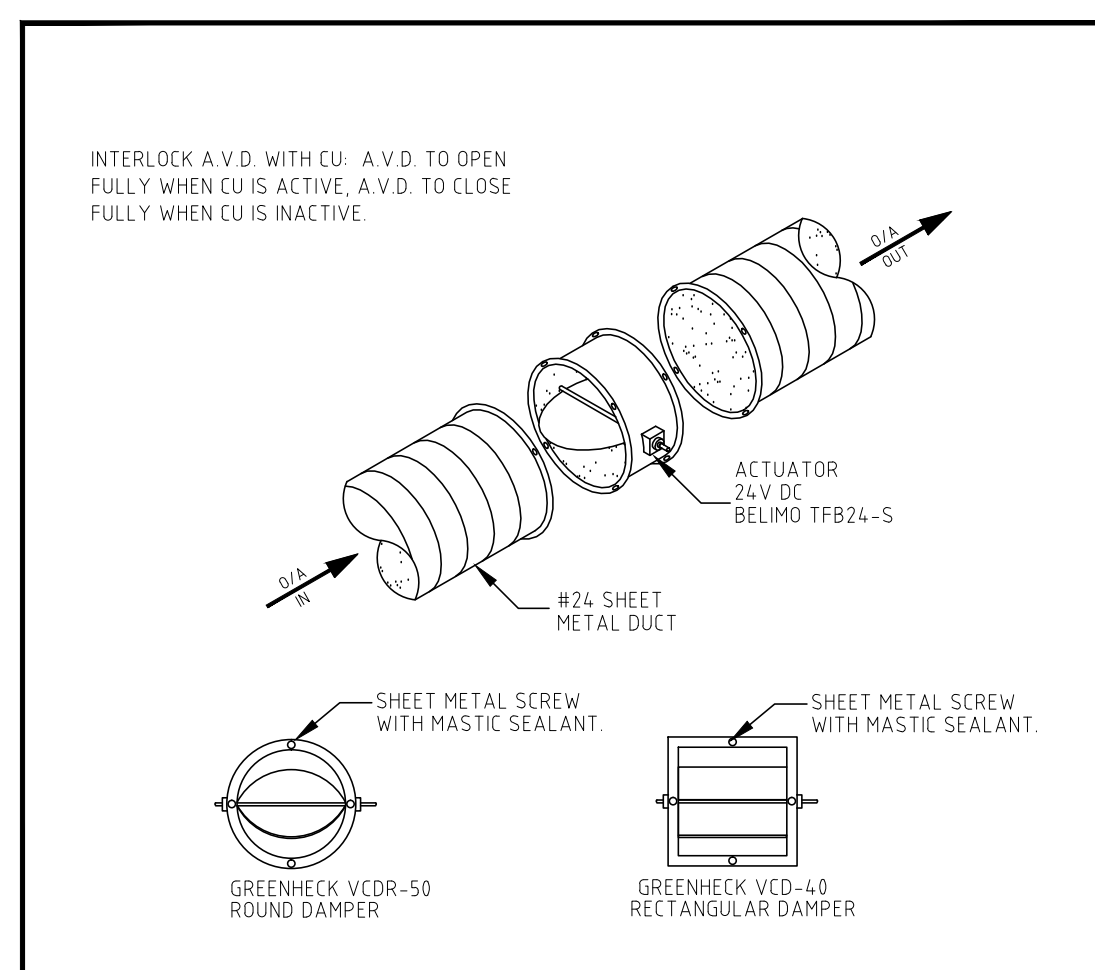
DETAIL NO. 1 **CEILING MOUNTED FAN DETAIL** NOT TO SCALE



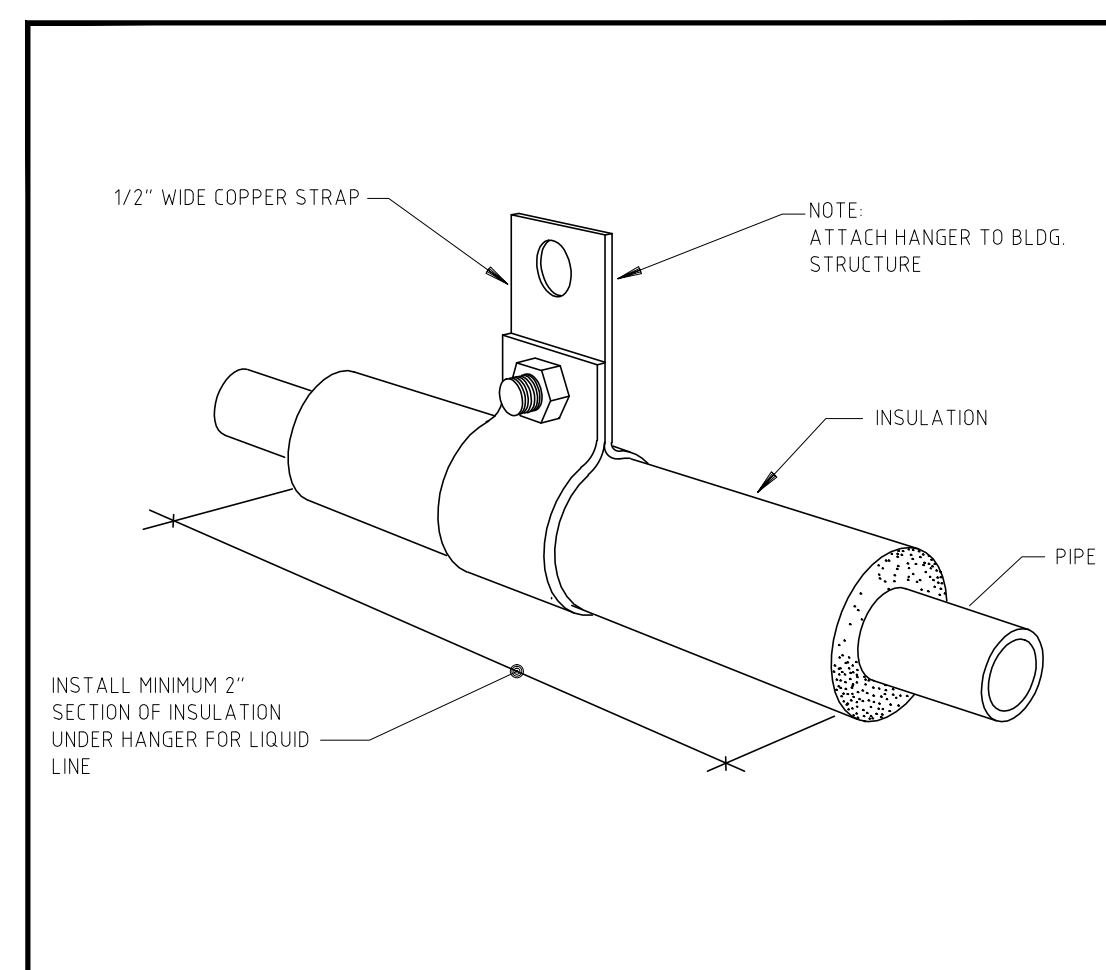
DETAIL NO. 2 **DUCTWORK CONNECTION SUPPLY (FLEX DUCT) DETAIL** NOT TO SCALE



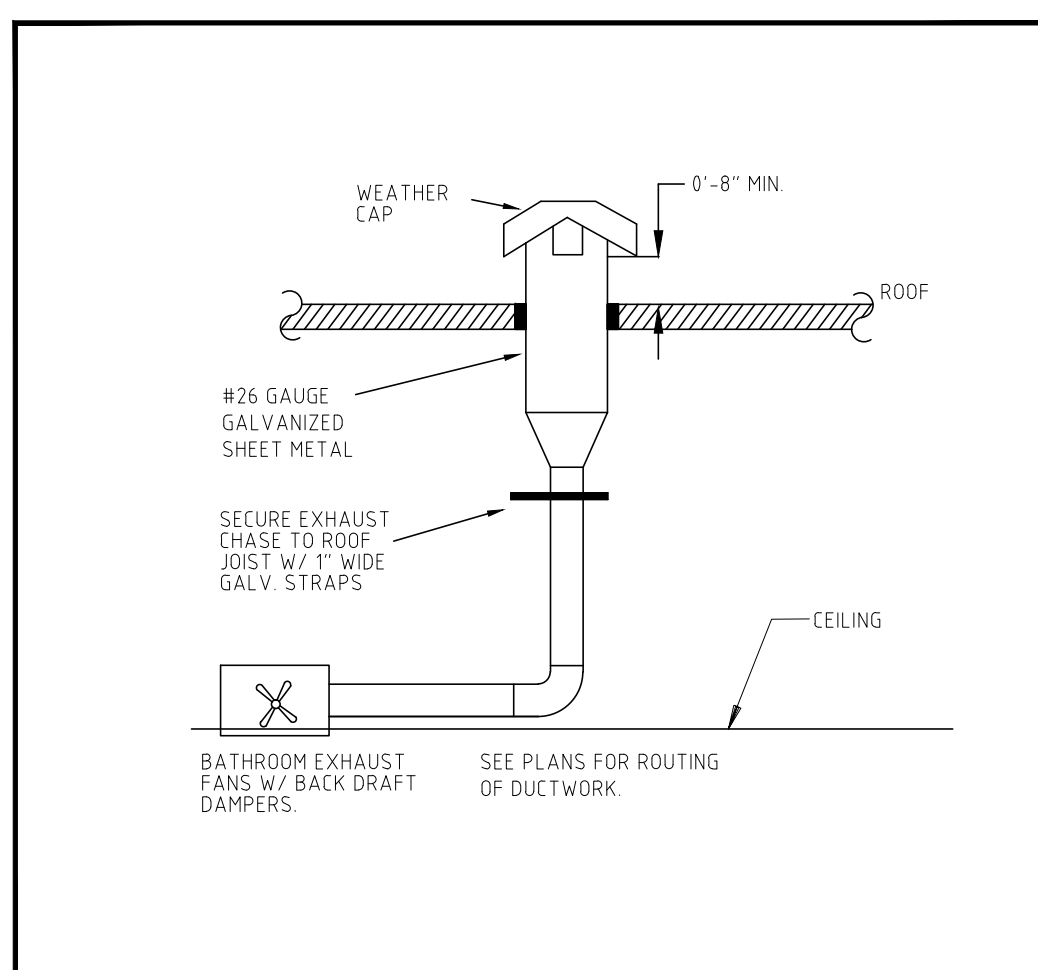
DETAIL NO. 3 **CONDENSER MOUNTING DETAIL** NOT TO SCALE



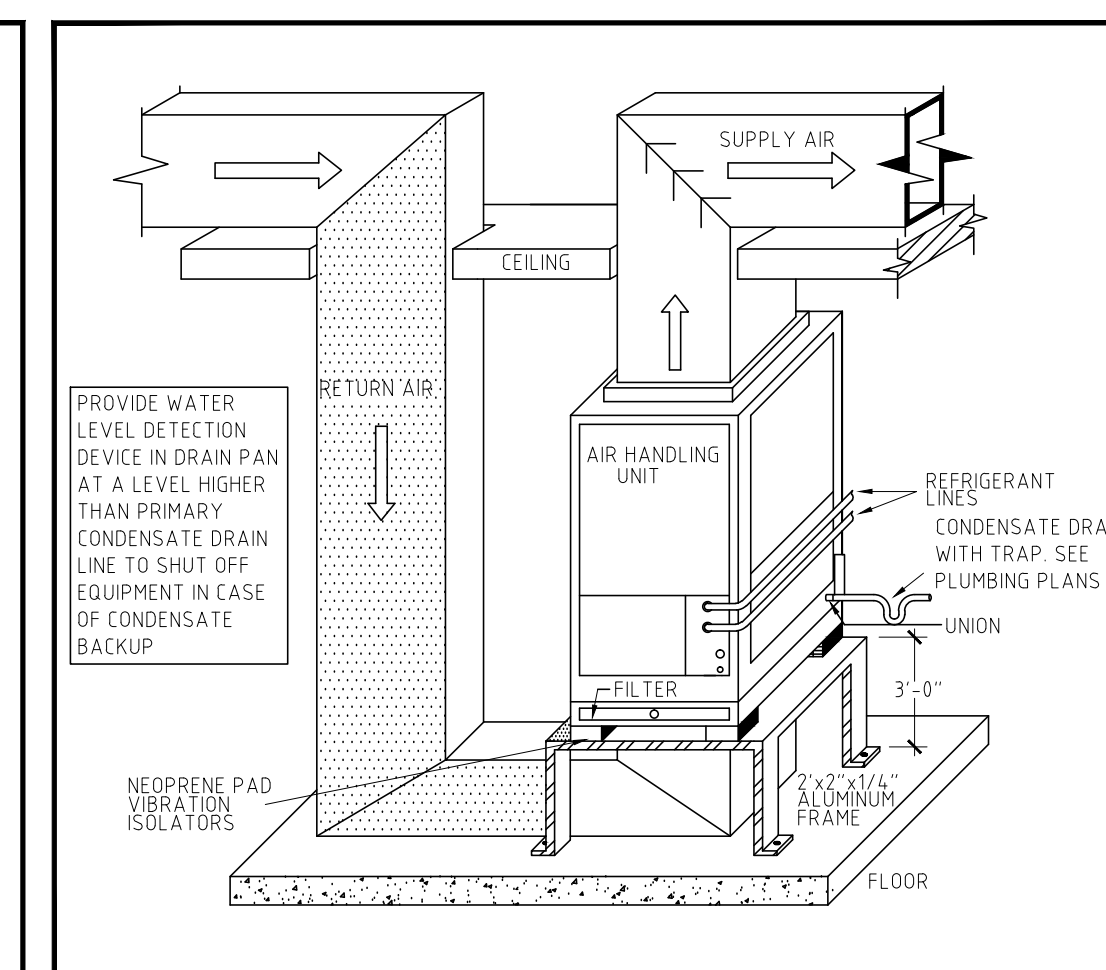
DETAIL NO. 4 **AUTOMATIC VOLUME DAMPER (A.V.D.) DETAIL** NOT TO SCALE



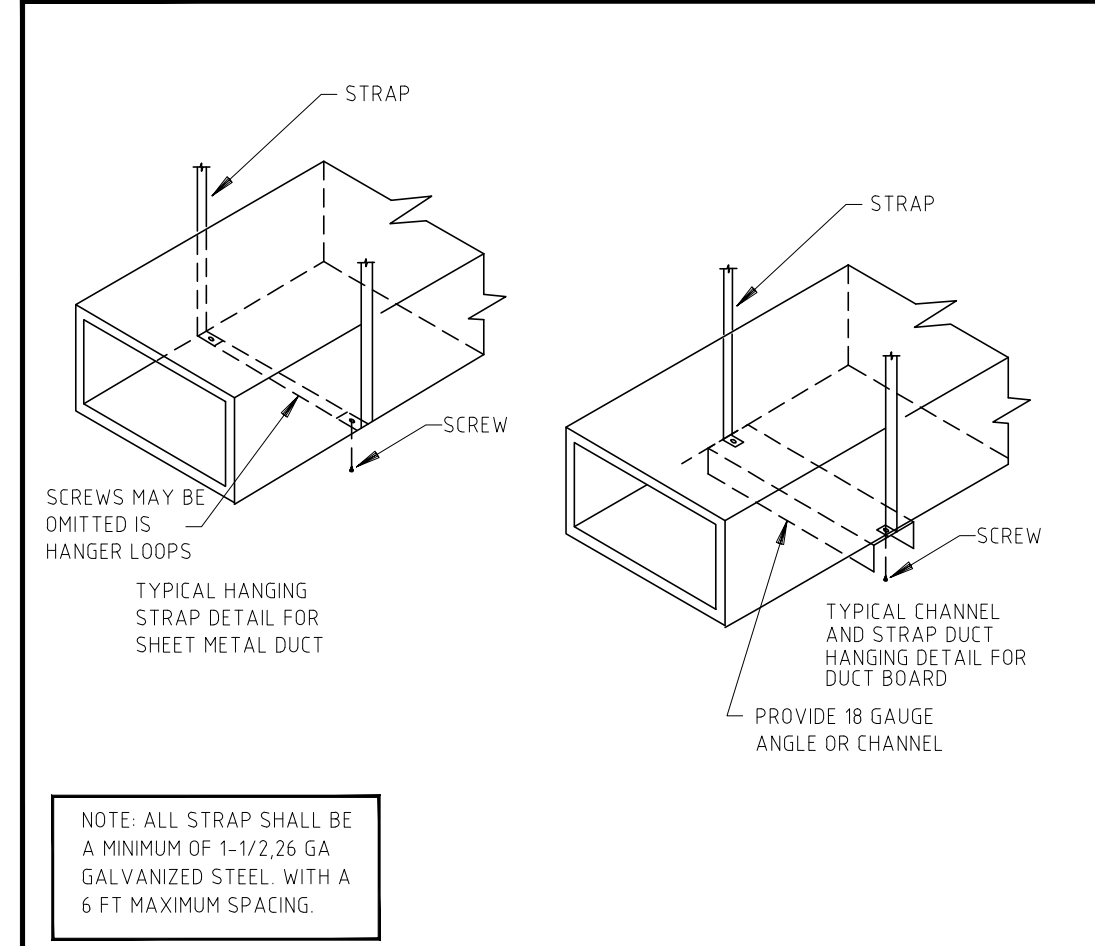
DETAIL NO. 5 **REFRIGERANT PIPING DETAIL** NOT TO SCALE



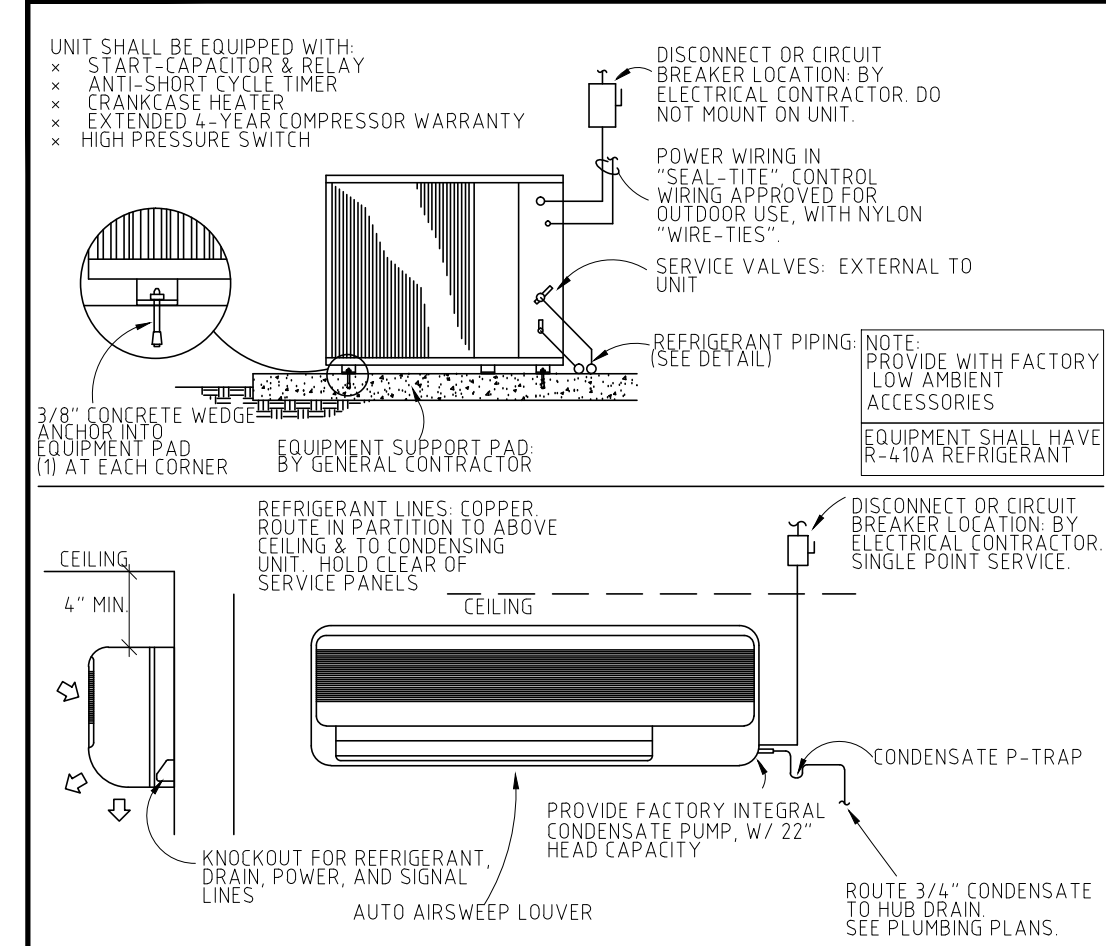
DETAIL NO. 6 **EXHAUST FAN DETAIL** NOT TO SCALE



DETAIL NO. 7 **AIR HANDLER DETAIL** NOT TO SCALE



DETAIL NO. 8 **METHODS OF HANGING RIGID DUCT DETAIL** NOT TO SCALE



DETAIL NO. 9 **DUCTLESS SPLIT SYSTEM DETAIL** NOT TO SCALE



DETAIL NO. 6 **EXHAUST FAN DETAIL** NOT TO SCALE

MINI-SPLIT AIR HANDLING UNIT SCHEDULE

INDOOR UNIT NO.	OUTDOOR UNIT NO.	MFG.	CONDENSING UNIT MODEL NO.	AIR HANDLER UNIT MODEL NO.	TOTAL MBH	SENSIBLE MBH	HEATING MBH	TOTAL CFM L/M/H	SEER/ HSPF	SUCTION & LIQUID LINES	V/P/Hz	CONDENSING UNIT		AIR HANDLER UNIT	
												MIN. AMPACITY	MAX FUSE	MIN. AMPACITY	MAX FUSE
MS-1	MCU-1	MITSUBISHI	MUY-GE18NA	MSY-GE18NA-8	17.2	13.4	-	275/339/533	19.2	1/2" & 1/4"	230/1/60	14	15	INDOOR UNIT RECEIVES POWER FROM OUTDOOR UNIT THROUGH FIELD SUPPLIED INTERCONNECTED WIRING	
MS-2	MCU-2	MITSUBISHI	MUY-GE09NA	MSY-GE09NA	9.0	8.6	-	170/237/321	21.0	3/8" & 1/4"	230/1/60	12	15	INDOOR UNIT RECEIVES POWER FROM OUTDOOR UNIT THROUGH FIELD SUPPLIED INTERCONNECTED WIRING	

A/C EQUIPMENT NOTES:

- 1) VERIFY ALL A/C ELECTRICAL REQUIREMENTS WITH MANUFACTURERS SPEC. PRIOR TO INSTALLATION.
- 2) PROVIDE R-410A REFRIGERANT
- 3) PROVIDE MANUFACTURER SPECIFIED DISCONNECTING MEANS AT AHUs
- 4) PROVIDE 7 DAY DIGITAL PROGRAMMABLE T-STAT WITH NIGHT SET-BACK, THERMISTAT OR EQUAL
- 5) REFRIGERANT LINE SIZE BASED ON 0-100 FT. TOTAL EQUIVALENT LENGTH. SEE MANUFACTURER FOR LONGER LENGTHS.
- 6) COOLING CAPACITY BASED ON 64°F DB, 53°F WB.
- 7) INCLUDE HIGH-EFFICIENCY, VARIABLE SPEED FAN MOTOR.
- 8) CONTRACTOR TO PROVIDE QUOTES FOR EQUIVALENT EQUIPMENT.

AIR CONDITIONING SYSTEM SCHEDULE

UNIT TAGS	AHU-1/CU-1
LOCATION	1ST FLOOR
MANUFACTURER	CARRIER
TYPE	SPLIT
NOMINAL TONNAGE	5.0
TOTAL BTU	55,900
SENSIBLE BTU	41,000
E.A.T. DB/WB, °F	75.0/63.0
L.A.T. DB/WB, °F	55.5/54.4
SEER	16.5
INDOOR UNIT DATA	
MODEL No.	FE4ANB006
CFM	1995
COIL FACE AREA (SQFT)	7.42
E.S.P., IN WC	0.5
T.S.P., IN WC	1.0
V/Ph/Hz	230/1/60
ELEC. HEATER, kW	10
MCA	58.5
MOCP	60
MOTOR HP	3/4
DIMENSIONS, IN (LxWxH)	23 x 25 x 60
WEIGHT, lbs.	210
OUTDOOR UNIT DATA	
MODEL No.	24ANB760
V/Ph/Hz	230/1/60
MCA	37.3
MOCP	60
DIMENSIONS, IN (LxWxH)	35 x 35 x 41
WEIGHT	315
REFRIGERANT LINE SIZE SUCTION & LIQUID	1-1/8 & 3/8
AHRI #	5635838
REMARKS:	

FAN SCHEDULE

① FAN TO BE INTERLOCKED WITH LIGHTS, COORDINATE WITH ELECTRICAL

TAG	MANUFACTURER	MODEL	SYSTEM	LOCATION	CFM	E.S.P. (IN W.C.)	VOLTAGE (V/PH/Hz)	OPERATING POWER	RPM	WHEEL SIZE	dBA	DRIVE TYPE	DUCT SIZE CONNECTION	REMARKS
EF-1	GREENHECK	SP-C50	-	CEILING	50	0.100	115/1/60	46 WATTS	1680	-	-	DIRECT W/ SPEED CONTROL	4" φ	①

PERMIT SET: 07/21/16

FAE CONSULTING

700 WEST HILLSBORO BLVD., BLDG. #1, SUITE 204
DEERFIELD BEACH, FLORIDA 33441
TEL: (561) 391-9292 FAX: (561) 391-9898
CERTIFICATE OF AUTHORIZATION NO. 28107
URSULA IARRATE, P.E. LICENSE #73122
STEPHEN F. ROLLIN, P.E. LICENSE #36428
DONALD H. AUSTIN, JR., P.E. LICENSE #60651
JASON BARBER, P.E. LICENSE #73050
E-MAIL: INFO@FAECONSULTING.COM
DESIGNED BY: DB/FR/AB PM: KS P/N: 16104

REVISIONS	BY

Slattery & Associates

ARCHITECTS PLANNERS

2060 NW BOCA RATON BLVD.
SUITE 2
BOCA RATON, FL 33431
TEL: 561-392-3848
FAX: 561-392-5402
WWW.SLATTERYARCHITECTS.COM

**WOODFIELD HUNT CLUB
CLUBHOUSE RENOVATION
AND EXPANSION**

4420 WOODFIELD BLVD.
BOCA RATON, FLORIDA

DRAWN DB/FR/AB
CHECKED UI/SR/DA/UB
DATE 07-21-16
SCALE AS NOTED
JOB NO. 16104
SHEET

M5.1

PERMIT - 7-21-16

PRIOR TO SUBMITTING THE BID, THE CONTRACTOR SHALL FIELD VERIFY ALL EXISTING CONDITIONS AND INFORM THE ARCHITECT AND THE ENGINEER OF ANY DISCREPANCY BETWEEN THESE DOCUMENTS AND THE EXISTING CONDITIONS AND SHALL INCLUDE IN THE BID TO CORRECT THE SAME AS DIRECTED. THE ENGINEER AND THE ARCHITECT, ARE NOT RESPONSIBLE FOR ANY ADDITIONAL COSTS RESULTING FROM VERIFYABLE EXISTING CONDITIONS DISCOVERED AFTER CONTRACT HAS BEEN AWARDED. NO CHANGES SHALL BE MADE TO THESE PLANS WITHOUT PRIOR APPROVAL FROM THE ENGINEER OF RECORD. ALL CHANGES SHALL BE SUBMITTED FOR REVIEW PRIOR TO INSTALLATION. NOT FOR BID UNTIL PERMIT HAS BEEN ISSUED.