

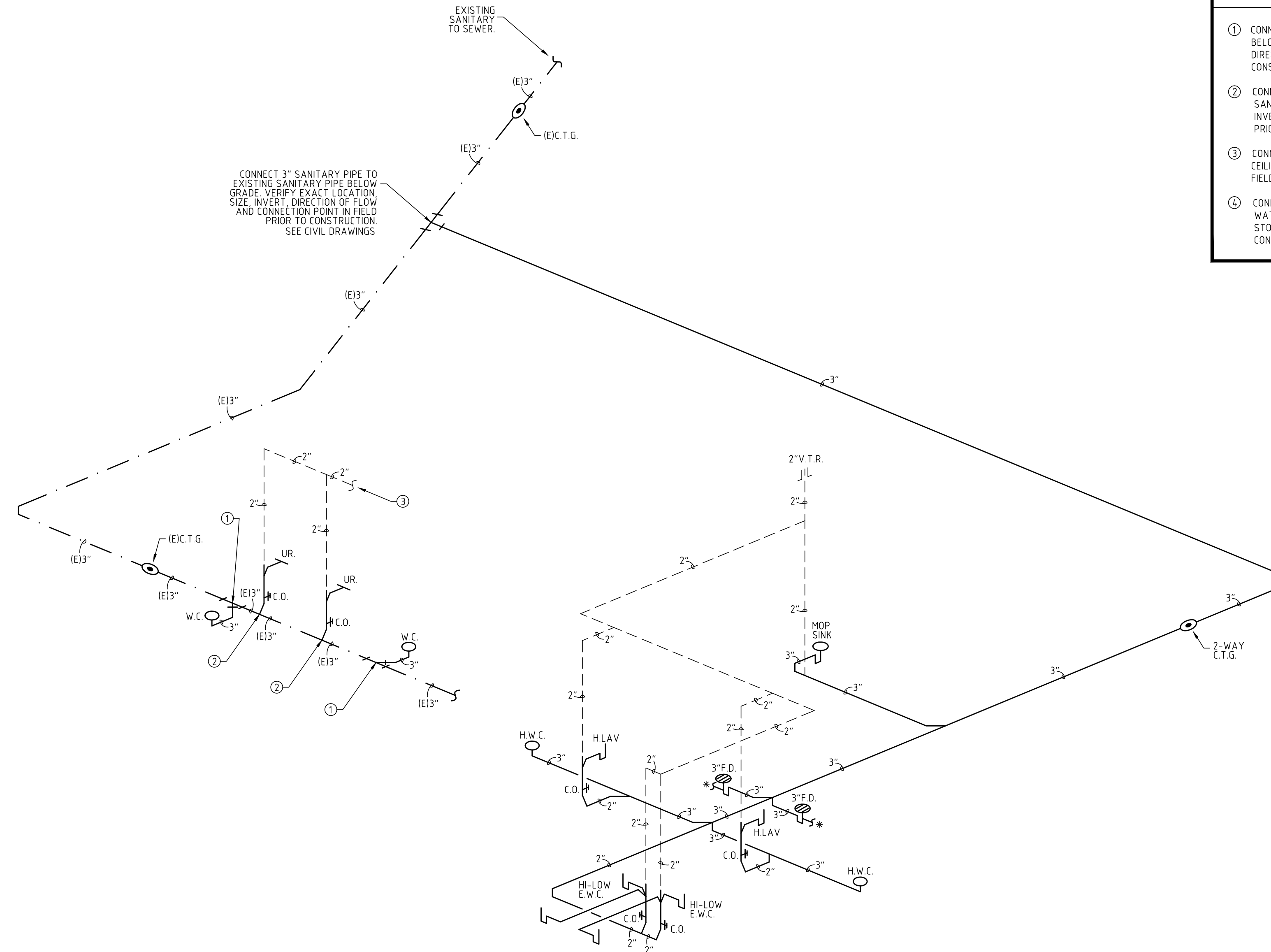
GAS RISER

CLUBHOUSE BUILDING

N.T.S.

0.5 PSI PIPE SIZING PER F.B.C. 2014 FUEL GAS SIZING PER TABLE 402.4(28)	
TOTAL GAS CONSUMPTION	
ITEM	BTUH
GENERATOR	727,310

- NOTES:**
- 1) INSTALLATION OF ALL GAS PIPING SHALL BE PER F.B.C. FUEL GAS 2014 (GAS PIPING (STANDARD))
 - 2) REFER TO RISER FOR PIPE MATERIALS
 - 3) PRESSURE TEST GAS PIPING FOR LEAKS PRIOR TO CONNECTING GAS SUPPLY.
 - 4) PLEASE VERIFY MANUFACTURES REQUIREMENTS FOR BTU DEMAND, MINIMUM AND MAXIMUM GAS PRESSURE LIMITS AT EQUIPMENT. PRESSURE REGULATOR IF REQUIRED MUST BE APPROVED BY EQUIPMENT MANUFACTURE.
 - 5) VERIFY LOCATION OF EQUIPMENT PRIOR TO INSTALLATION.
 - 6) ALL CONDUITS ENCASING GAS PIPE BELOW SLAB SHALL BE VENTED MINIMUM 6" ABOVE GRADE AND SHALL BE INSTALLED SO AS TO PREVENT THE ENTRY OF WATER & INSECTS.
 - 7) GAS PIPE SHALL REQUIRE INSULATED METALLIC LOCATING WIRE (14 GAUGE COPPER AGAVE WIRE) CAPABLE OF DETECTION BY A CABLE LOCATOR AND SHALL BE BURIED DIRECTLY ABOVE THE CENTERLINE OF THE PIPE. USE FGG/BM COMPATIBLE DUCT TAPE AS NECESSARY TO HOLD WIRE DIRECTLY ON THE TOP OF THE PIPE.
 - 8) PE PIPE INSTALLED BELOW HARD SURFACE MUST BE SLEEVED AND VENTED.

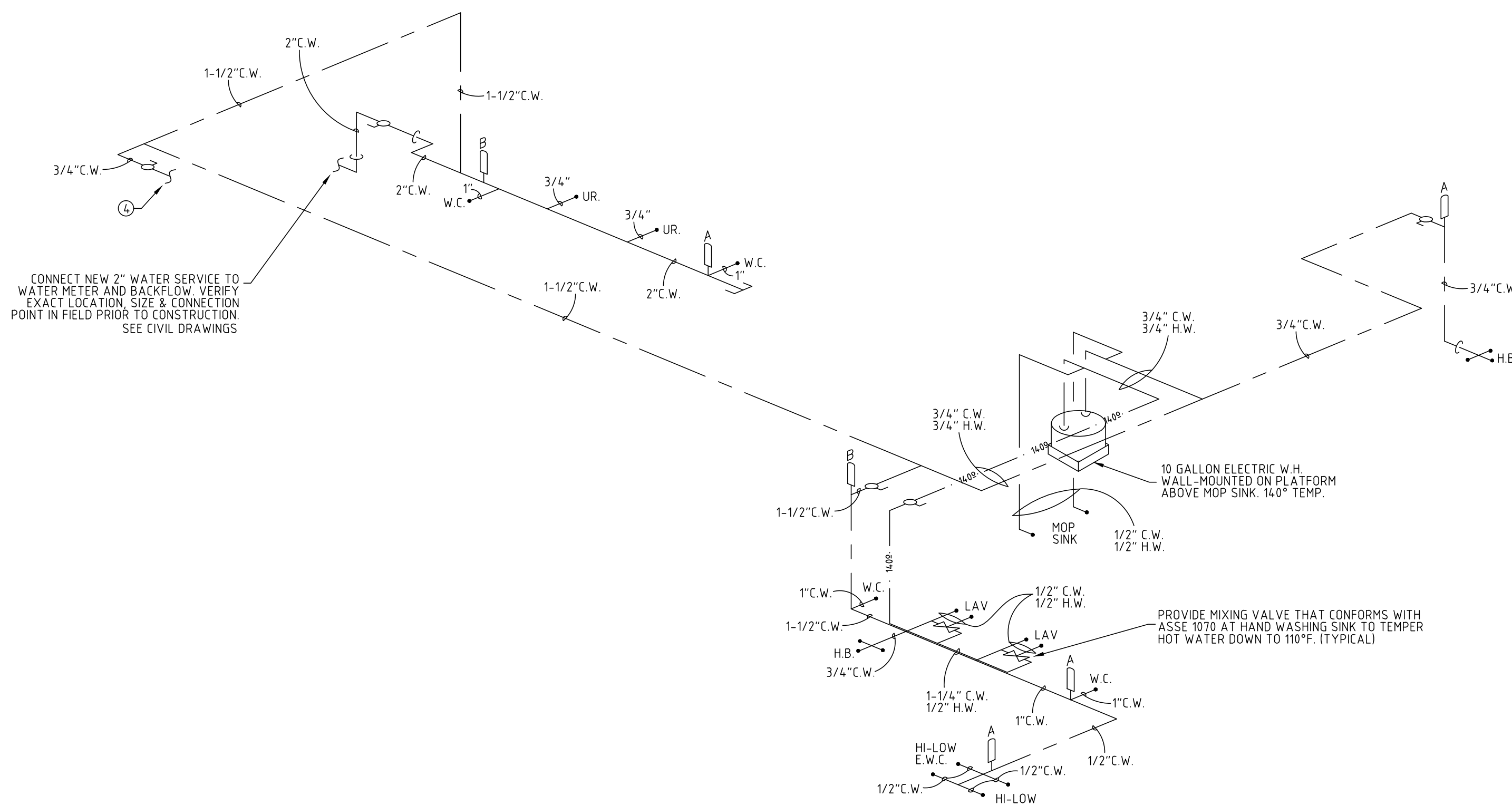


SANITARY RISER

CLUBHOUSE BUILDING

N.T.S.

* PROVIDE 1/2" C.W. TRAP PRIMER FOR FLOOR DRAINS.



WATER RISER

CLUBHOUSE BUILDING

N.T.S.

WATER HAMMER ARRESTOR SCHEDULE			
P.D.I. DESIGNATION	MANUF. & MODEL	FIXTURE UNITS	CONNECTION
A	SIoux CHIEF 652-A	1-11	1/2"
B	SIoux CHIEF 653-B	12-32	3/4"
C	SIoux CHIEF 654-C	33-60	1"

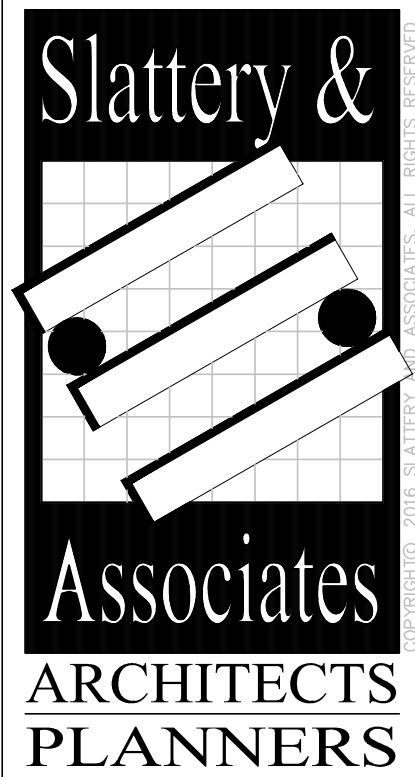
SIoux CHIEF SHOCK ARRESTORS APPROVED FOR INSTALLATION WITH NO ACCESS DOOR REQUIRED. CONFORMS TO ANSI/ASSE 1010 STANDARDS.

PRIOR TO SUBMITTING THE BID, THE CONTRACTOR SHALL FIELD VERIFY ALL EXISTING CONDITIONS AND INFORM THE ARCHITECT AND THE ENGINEER OF ANY DISCREPANCY BETWEEN THESE DOCUMENTS AND THE EXISTING CONDITIONS AND SHALL INCLUDE IN THE BID TO CORRECT THE SAME AS DIRECTED. THE ENGINEER AND THE ARCHITECT, ARE NOT RESPONSIBLE FOR ANY ADDITIONAL COSTS RESULTING FROM VERIFYABLE EXISTING CONDITIONS DISCOVERED AFTER CONTRACT HAS BEEN AWARDED. NO CHANGES SHALL BE MADE TO THESE PLANS WITHOUT PRIOR APPROVAL FROM THE ENGINEER OF RECORD. ALL CHANGES SHALL BE SUBMITTED FOR REVIEW PRIOR TO INSTALLATION. NOT FOR BID UNTIL PERMIT HAS BEEN ISSUED.

PLUMBING KEY NOTES

- 1) CONNECT NEW 3" SANITARY PIPE TO EXISTING SANITARY PIPE BELOW SLAB. VERIFY EXACT LOCATION, SIZE, INVERT, DIRECTION OF FLOW & CONNECTION POINT IN FIELD PRIOR TO CONSTRUCTION.
- 2) CONNECT NEW 2" SANITARY WASTE STACK VENT TO EXISTING SANITARY PIPE BELOW SLAB. VERIFY EXACT LOCATION, SIZE, INVERT, DIRECTION OF FLOW & CONNECTION POINT IN FIELD PRIOR TO CONSTRUCTION.
- 3) CONNECT NEW 2" VENT PIPE TO EXISTING VENT PIPE ABOVE CEILING. VERIFY EXACT LOCATION, SIZE & CONNECTION POINT IN FIELD PRIOR TO CONSTRUCTION.
- 4) CONNECT NEW 3/4" COLD WATER PIPE TO EXISTING COLD WATER PIPE, SERVICING THE EXISTING WATER HEATER IN THE STORAGE CLOSET. VERIFY EXACT LOCATION, SIZE & CONNECTION POINT IN FIELD PRIOR TO CONSTRUCTION.

REVISIONS	BY



2060 NW BOCA RATON BLVD.
SUITE 2
BOCA RATON, FL 33431
TEL: 561-392-3848
FAX: 561-392-5402
WWW.SLATTERYARCHITECTS.COM

**WOODFIELD HUNT CLUB
CLUBHOUSE RENOVATION
AND EXPANSION**
4420 WOODFIELD BLVD.
BOCA RATON, FLORIDA

PERMIT SET: 07/21/16



700 WEST HILLSBORO BLVD. - BLDG. #1, SUITE 204
DEERFIELD BEACH, FLORIDA 33441
TEL: (561) 391-9292 FAX: (561) 391-9898
CERTIFICATE OF AUTHORIZATION NO. 28107
URSULA IARFATE, P.E. LICENSE #73122
STEPHEN F. ROLLIN, P.E. LICENSE #36428
DONALD H. AUSTIN, JR., P.E. LICENSE #60651
JASON BARBER, P.E. LICENSE #73050
E-MAIL: INFO@FAECONSULTING.COM
DESIGNED BY: DB/FR/AB PM: KS P/N: 16104

DRAWN
DB/FR/AB
CHECKED
UI/SR/DA/UB
DATE
07-21-16
SCALE
AS NOTED
JOB NO.
16104
SHEET

P0.3

PERMIT - 7-21-16