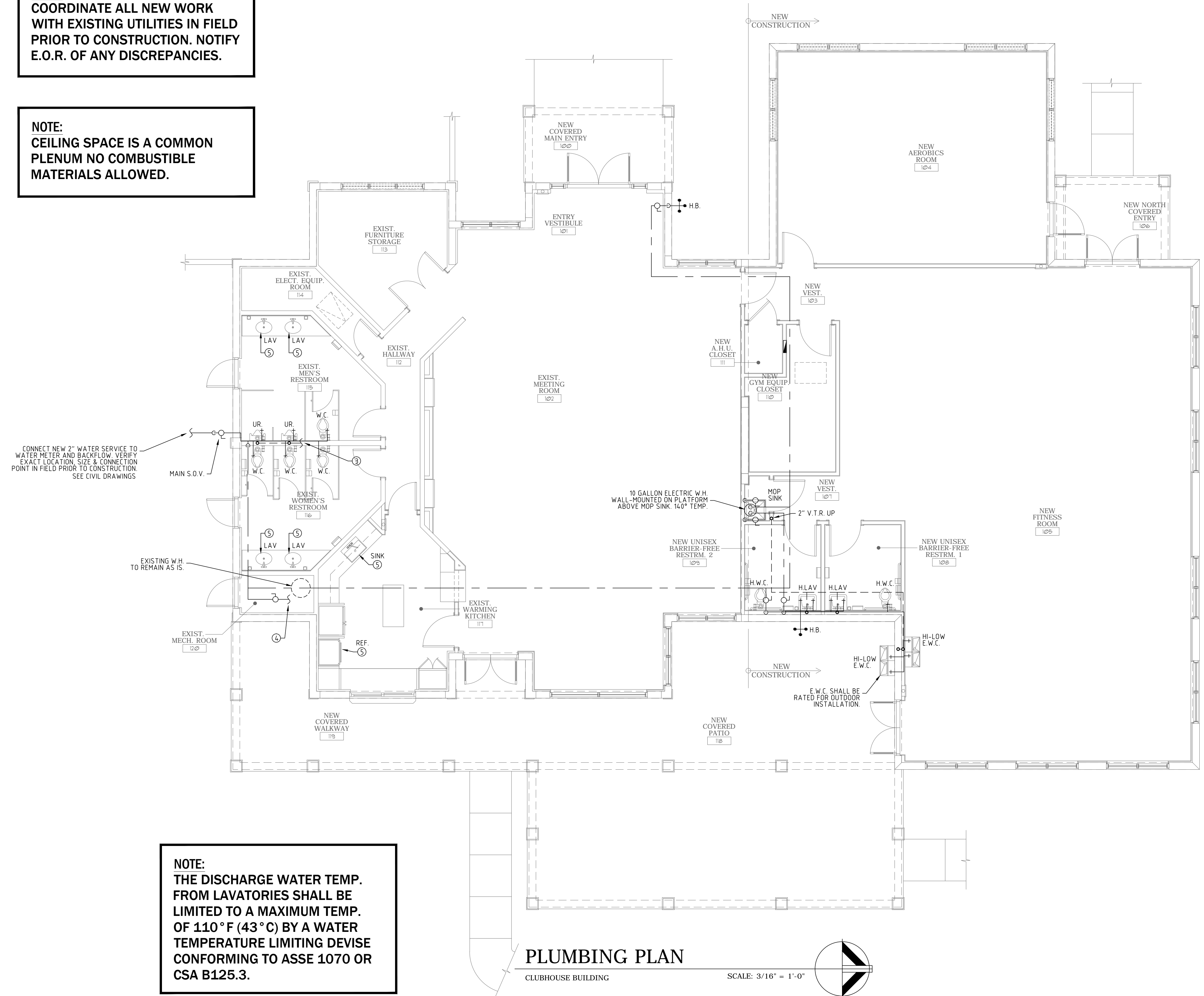
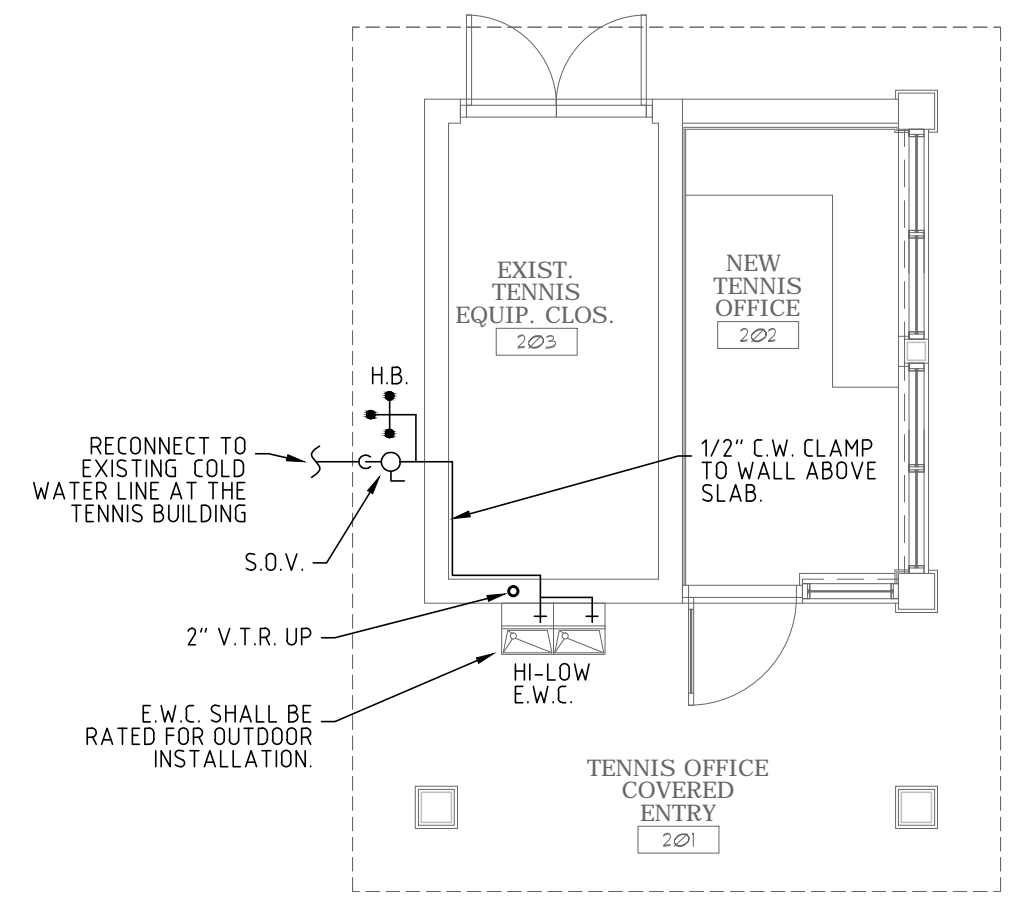


NOTE:
COORDINATE ALL NEW WORK WITH EXISTING UTILITIES IN FIELD PRIOR TO CONSTRUCTION. NOTIFY E.O.R. OF ANY DISCREPANCIES.

NOTE:
CEILING SPACE IS A COMMON PLENUM NO COMBUSTIBLE MATERIALS ALLOWED.



- PLUMBING KEY NOTES**
- CONNECT NEW 3" SANITARY PIPE TO EXISTING SANITARY PIPE BELOW SLAB. VERIFY EXACT LOCATION, SIZE, INVERT, DIRECTION OF FLOW & CONNECTION POINT IN FIELD PRIOR TO CONSTRUCTION.
 - CONNECT NEW 2" SANITARY WASTE STACK VENT TO EXISTING SANITARY PIPE BELOW SLAB. VERIFY EXACT LOCATION, SIZE, INVERT, DIRECTION OF FLOW & CONNECTION POINT IN FIELD PRIOR TO CONSTRUCTION.
 - CONNECT NEW 2" VENT PIPE TO EXISTING VENT PIPE ABOVE CEILING. VERIFY EXACT LOCATION, SIZE & CONNECTION POINT IN FIELD PRIOR TO CONSTRUCTION.
 - CONNECT NEW 3/4" COLD WATER PIPE TO EXISTING COLD WATER PIPE. SERVICING THE EXISTING WATER HEATER IN THE STORAGE CLOSET. VERIFY EXACT LOCATION, SIZE & CONNECTION POINT IN FIELD PRIOR TO CONSTRUCTION.
 - EXISTING FIXTURE TO BE REPLACED WITH NEW IN SAME LOCATION. CONNECT TO EXISTING PLUMBING PIPES BELOW SLAB, IN WALL AND/OR ABOVE CEILING. ALL EXISTING WATER AND DRAIN LINES TO BE REROUTED AND RECONNECTED ACCORDINGLY. VERIFY EXACT LOCATION, SIZE, INVERT, DIRECTION OF FLOW & CONNECTION POINT IN FIELD PRIOR TO CONSTRUCTION.



PLUMBING PLAN

TENNIS BLDG. NEW OFFICE SCALE: 3/16" = 1'-0"

NOTE:
THE DISCHARGE WATER TEMP. FROM LAVATORIES SHALL BE LIMITED TO A MAXIMUM TEMP. OF 110°F (43°C) BY A WATER TEMPERATURE LIMITING DEVICE CONFORMING TO ASSE 1070 OR CSA B125.3.

PLUMBING PLAN
CLUBHOUSE BUILDING SCALE: 3/16" = 1'-0"

REVISIONS	BY

Slattery & Associates
ARCHITECTS PLANNERS
2060 NW BOCA RATON BLVD.
SUITE 2
BOCA RATON, FL 33431
TEL: 561-392-3848
FAX: 561-392-5402
WWW.SLATTERYARCHITECTS.COM

WOODFIELD HUNT CLUB CLUBHOUSE RENOVATION AND EXPANSION
4420 WOODFIELD BLVD.
BOCA RATON, FLORIDA

PERMIT SET: 07/21/16

FAE CONSULTING

700 WEST HILLSBORO BLVD. - BLDG. #1, SUITE 204
DEERFIELD BEACH, FLORIDA 33441
TEL: (561) 391-9292 FAX: (561) 391-9898
CERTIFICATE OF AUTHORIZATION NO. 28107
URSULA IARRATE, P.E. LICENSE #73122
STEPHEN F. ROLLIN, P.E. LICENSE #36428
DONALD H. AUSTIN, JR., P.E. LICENSE #60651
JASON BARBER, P.E. LICENSE #73050
E-MAIL: INFO@FAECONSULTING.COM
DESIGNED BY: DB/FR/AB PM: KS P/N: 16104

PRIOR TO SUBMITTING THE BID, THE CONTRACTOR SHALL FIELD VERIFY ALL EXISTING CONDITIONS AND INFORM THE ARCHITECT AND THE ENGINEER OF ANY DISCREPANCY BETWEEN THESE DOCUMENTS AND THE EXISTING CONDITIONS AND SHALL INCLUDE IN THE BID TO CORRECT THE SAME AS DIRECTED. THE ENGINEER AND THE ARCHITECT, ARE NOT RESPONSIBLE FOR ANY ADDITIONAL COSTS RESULTING FROM VERIFYABLE EXISTING CONDITIONS DISCOVERED AFTER CONTRACT HAS BEEN AWARDED. NO CHANGES SHALL BE MADE TO THESE PLANS WITHOUT PRIOR APPROVAL FROM THE ENGINEER OF RECORD. ALL CHANGES SHALL BE SUBMITTED FOR REVIEW PRIOR TO INSTALLATION. NOT FOR BID UNTIL PERMIT HAS BEEN ISSUED.

DRAWN DB/FR/AB
CHECKED UI/SR/DA/UB
DATE 07-21-16
SCALE AS NOTED
JOB NO. 16104
SHEET

P1.1

PERMIT - 7-21-16