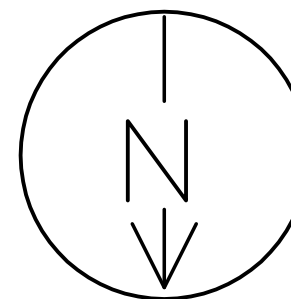


WF1 TO BE 12" x 24" W/ 3-#5 LONGITUDINAL AND #5@12" O.C. TRANSVERSE.

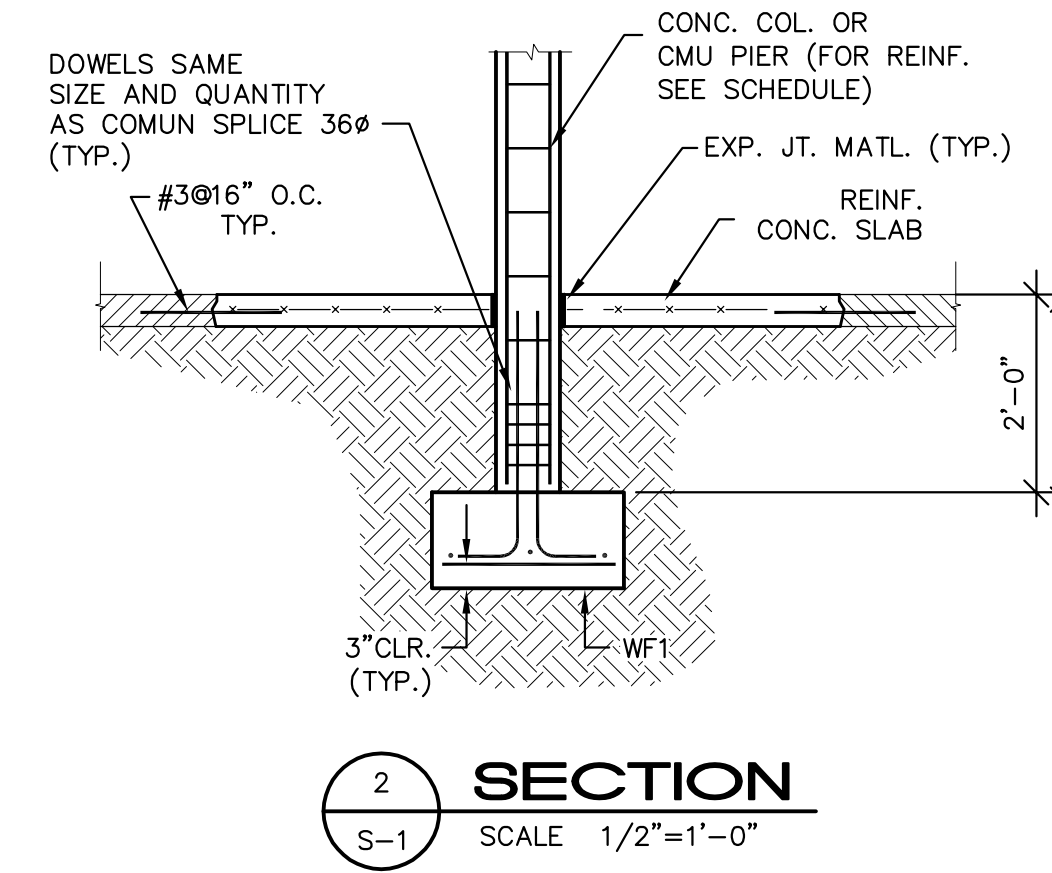
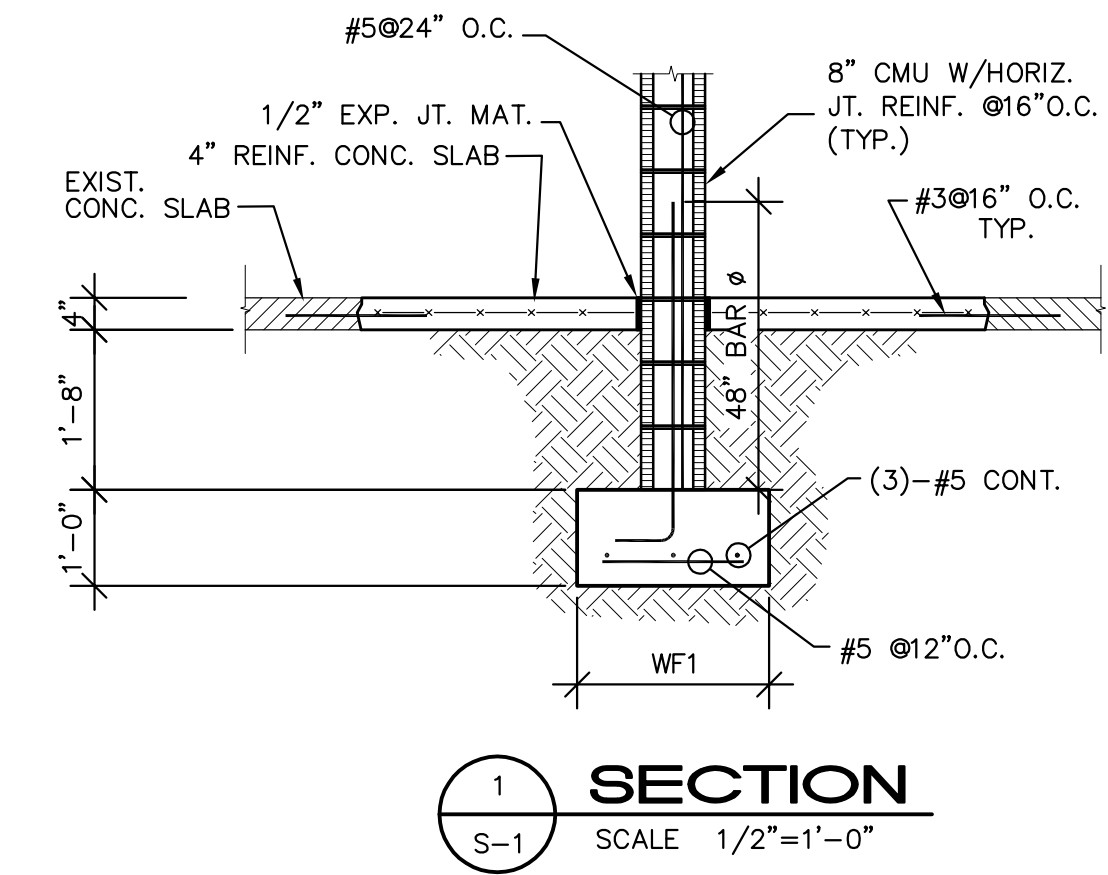


**PARTIAL FOUNDATION PLAN**  
SCALE: 3/32" = 1'-0"

NOTES:

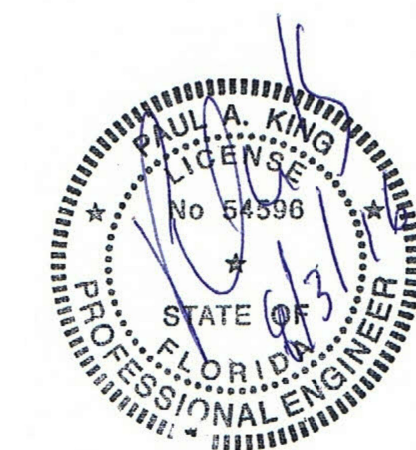
1. PROVIDE 8" REINF. CMU WALL W/ #5@24" O.C. DEMOLISH EXIST. SLAB AS REQ'D. SEE SECTION 1/S-1 FOR ADD'L INFO.
2. DOWEL NEW FOOTING INTO EXISTING FOOTING W/ 3-#5 DOWELS. EMBED. 5" & EPOXY. TYP.. DOWEL COLUMN #1 TO COLUMN #2 W/ #5 @ 12" O.C. REINF. BARS TYP.

KEY		
	EXISTING CMU WALL	
	REINF. CMU PIER	
	REINF. CONC. COLUMN	



COLUMN SCHEDULE				
MARK	SIZE	REINF.	TIES	TYPE
①	8 x 32	(12)-#5	#3@8" O.C.	CONC.
②	12 x 36	(4)-#5	-	SMP
③	EXIST. STEEL COL.	-	-	-
④	12 x 48	(6)-#5	-	SMP

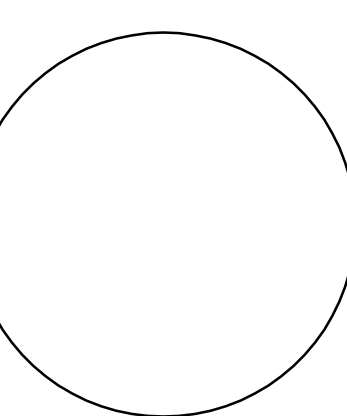
KEY ALL COLUMNS WITH ADJACENT CMU. SMP=SOLID MASONRY PIER



PHONE 561.951.7638 Paul A. King, P.E. #54596  
CERT. #31380  
**King Structural Group**  
6701 15G Mallards Cove Rd. Jupiter Fl. 33458

**ACKAL** A PROFESSIONAL CORPORATION  
**ARCHITECTS**  
105 CHAPEL DRIVE - LAFAYETTE, LOUISIANA 70506  
337-988-5271 ph - 337-988-5272 fax  
www.ackalarchitects.com

INTERIOR TENANT IMPROVEMENT FOR:  
IMMUNOTEK BIO CENTERS, LLC  
4560 LAKE WORTH ROAD  
OFFICE DEPOT PLAZA, SUITE B-5  
LAKE WORTH, PALM BEACH COUNTY, FL 33463



COPYRIGHT © 2016 ACKAL ARCHITECTS, APC.  
THIS DOCUMENT IS THE PROPERTY OF  
ACKAL ARCHITECTS, APC.  
REPRODUCTION OR USE WITHOUT  
WRITTEN CONSENT FROM  
ACKAL ARCHITECTS, APC.

date: 08-02-2016

ENGINEER:  
PAUL A KING PE  
drawn by:  
PAK

sheet no.

**S-1**

18 of 42