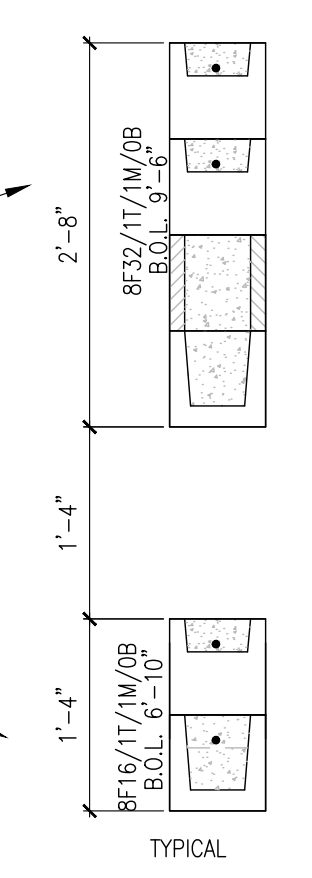


BEAM SCHEDULE									
MARK	DESCRIPTION	f'c (psi)	SIZE W" x H"	REINFORCEMENT			STIRRUPS		REMARKS
				BTM.	TOP	MID	SIZE	SPACING	
BB2	MASONRY	3000	8x16	(1) #4	(1) #4	-	N/A	-	-
1B1	CONCRETE	3000	8x20	(2) #5	(2) #5	(2) #5	#3	16" O/C	SEE DETAIL
1B8	CONCRETE	3000	8x8	(2) #6	(2) #6	-	#3	16" O/C	-

INDICATES OPENING BELOW / T.O.B.= TOP OF BEAM / B.O.L.= BOTTOM OF LINTEL / T.O.A.= TOP OF ARCH / T.O.S.= TOP OF SLAB  
 ABBREVIATIONS E.E. = EACH END, O/C = ON CENTER, F.E.S. = FROM EACH SUPPORT, T.O. = THROUGHOUT



**FRAMING NOTES**

- 1 - U.N.O. ALL STRAPS FOR ROOF TRUSSES TO BE CONCRETE TO WOOD ROOF; (2) SIMPSON META16 WITH TSS MOISTURE BARRIER AND (10) 10d x 1 1/2" GALVANIZED NAILS.
- 2 - ALL PLYWOOD FOR WALL AND ROOF SHEATHING IS TO BE 3/4" (3/8") APA RATED EXPOSURE 1 CDX.
- 3 - ALL PLYWOOD FOR FLOOR SHEATHING SHALL BE 3/4" (3/8") APA RATED EXPOSURE 1 CDX GLUED AND NAILED TO TOP OF TRUSS WITH ADHESIVES MEETING THE REQUIREMENTS OF AFC-01 AND APPLIED IN ACCORDANCE WITH MANUFACTURER'S SPECIFICATIONS.
- 4 - ALL NAILS FOR TRUSS TO BEAM AND TRUSS TO TRUSS METAL CONNECTORS ARE TO BE GALVANIZED.
- 5 - LINTELS AND MASONRY BEAMS WERE DESIGNED BASED ON CAST-CRETE LINTELS.
- 6 - BOTTOM OF LINTELS ARE TO BE PLACED AT TOP OF WINDOW, DOOR AND CLEAR SPANS OPENINGS.
- 7 - LINTELS SHALL HAVE 4" NOMINAL BEARING (4").
- 8 - THE TRUSS FRAMING SHOWN IS SCHEMATIC IN NATURE. HOWEVER THE SUPPORTING STRUCTURE HAS BEEN DESIGNED UNDER THE ASSUMPTION THE FRAMING SCHEME SHOWN WILL CLOSELY PARALLEL FINAL TRUSS DESIGNERS LAYOUT. SUBMIT FINAL TRUSS DRAWINGS FOR THIS ENGINEER'S REVIEW AND APPROVAL.
- 9 - PLACE 2x4 PT TO ALIGN WITH TOP AND BOTTOM CHORDS OF ROOF TRUSSES SECURE 2x MEMBERS TO WALL WITH HILTI X-ZF, POWDER ACTUATED FASTENER, ZF 72 PRS36, .177" ø, 2 1/4" LONG, WITH WASHER ø 16" O.C.
- 10 - NAIL SPECIFICATIONS: 8d COMMON NAILS - 0.131" ø x 2 1/2" LONG, 8d RING SHANK NAILS - 0.131" ø x 2 3/8", 10d COMMON NAILS - 0.148" ø x 3" LONG, AND 10d STRAP NAILS - 0.148" ø x 1 1/2" GALVANIZED
- 11 - TRUSS REACTIONS AND UPLIFTS SHOWN ARE THE SAME ON EACH END UNLESS OTHERWISE SHOWN DIFFERENT.
- 12 - WOOD BEARING WALLS AND HEADERS HAVE BEEN DESIGNED BASED ON RATIONAL ANALYSIS.
- 13 - ALL ELEVATIONS ARE REFERENCED FROM 0'-0", FINISH FLOOR, UNLESS NOTED OTHERWISE. SEE PRODUCT APPROVALS FOR EXACT ROUGH OPENING HEIGHTS AND WIDTHS.

The use of these specifications and plans shall be restricted to the original client and site for which they were prepared. Any reproduction or distribution is expressly limited to such use. Any other reproduction, reuse, or disclosure by any method, in whole or in part, is prohibited. These drawings and specifications contain proprietary information and shall remain with

**SPECIALTY ENGINEERING CONSULTANTS, Inc.**

**SHEET INFORMATION**  
BEAM PLAN

**PROJECT INFORMATION**  
WOODFIELD HUNT CLUB  
4420 WOODFIELD BLVD  
BOCA RATON, FL

**CLIENT INFORMATION**  
SLATTERY & ASSOCIATES  
2030 NW BOCA RATON BLVD  
BOCA RATON, FL

**SPECIALTY ENGINEERING CONSULTANTS, Inc.**  
1599 SW 30th AVE.  
SUITE #20  
BOYNTON BEACH, FL 33426

DADE - BROWARD - PALM BEACH  
FL, CA #009217

561 - 752 - 5440 OFFICE  
561 - 752 - 5542 FAX

FILE NAME:  
SCALE 1/4"=1'-0"  
DATE 07/21/16  
RVD. BY DAL  
DRWN. BY DAL

REVISION 0

SEAL  
D. MARK LeBLANC, PE FL #35683  
GARY McDOUGLE, E FL #56214  
D. ADAM LeBLANC, PE FL #77012

SHEET # 3 OF 6

1ST LIFT BEAM PLAN  
SCALE: 1/4" = 1'-0"