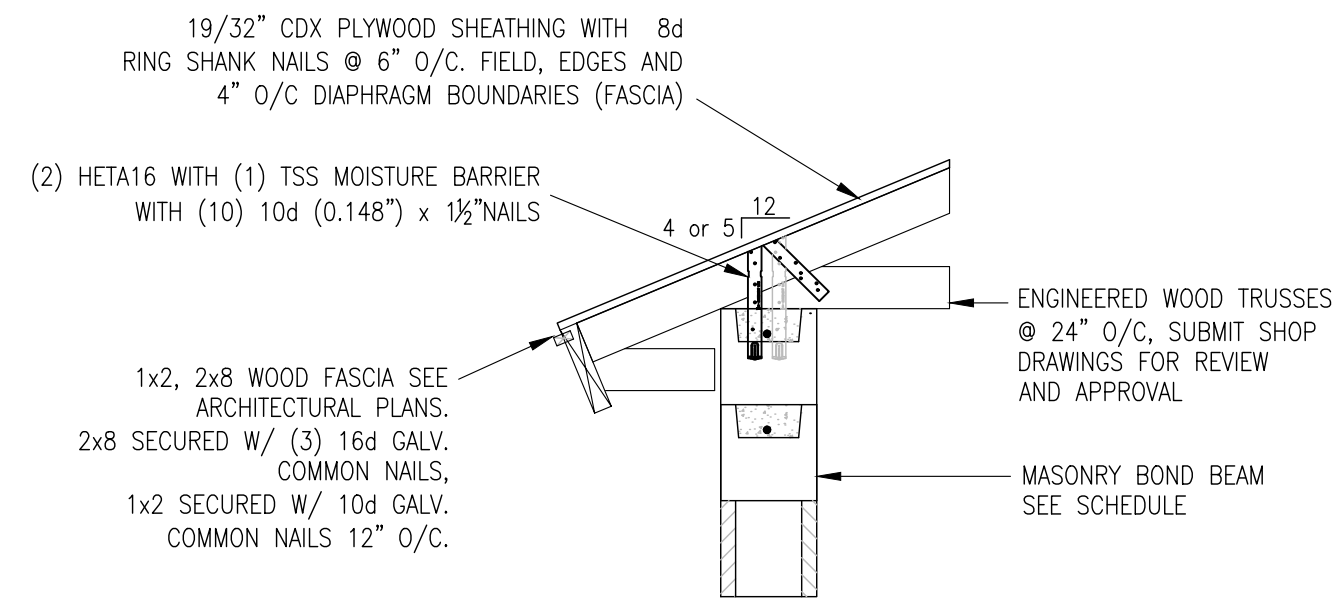
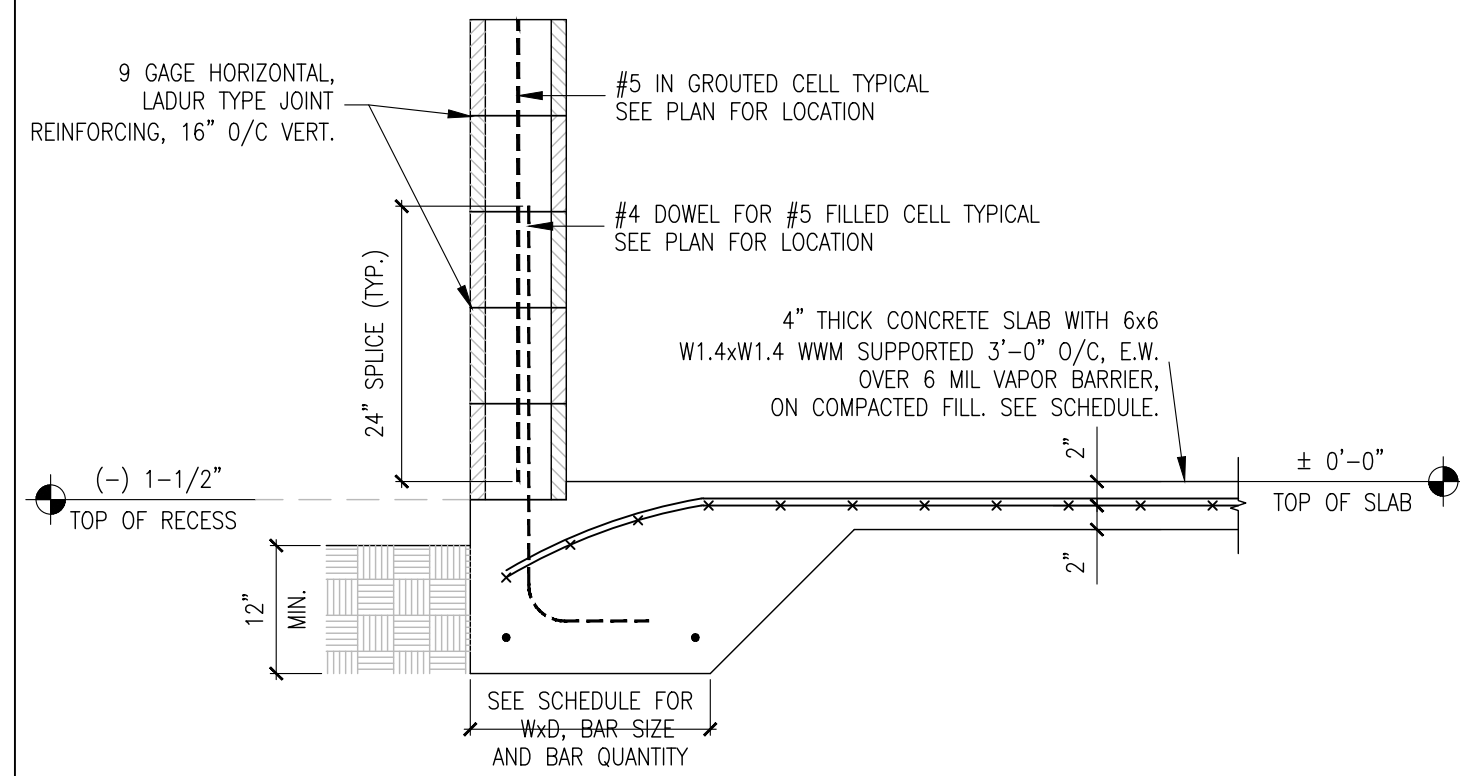


ALLOWABLE UPLIFT = 2035 LBS (2 STRAPS)
 F1 = 1225 LBS (2 STRAPS)
 F2 = 1520 LBS (2 STRAPS)



5 TYPICAL TRUSS CONNECTOR(S)
 ST-1 SCALE: 3/4" = 1'-0"



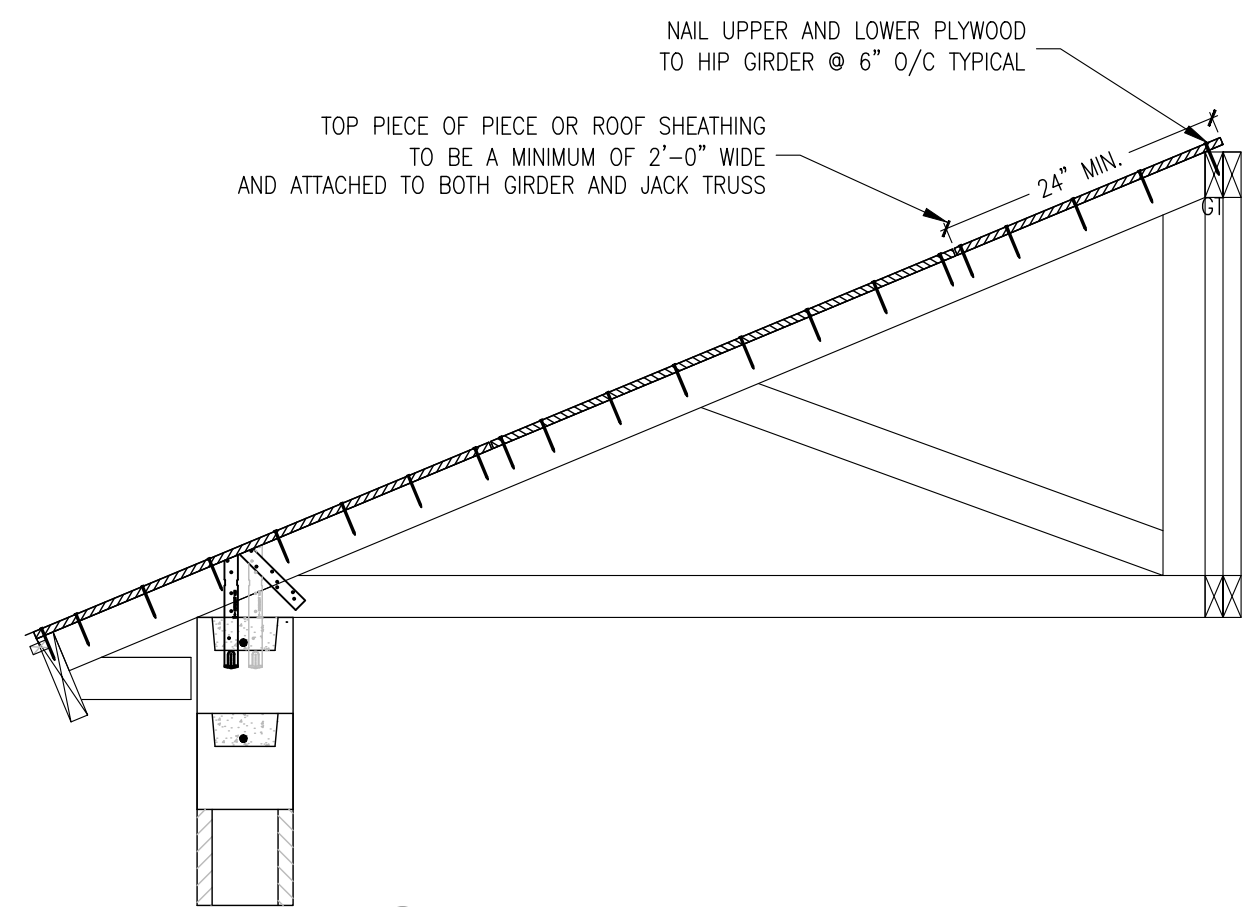
1 EXTERIOR MONO-FOOTING
 ST-1 SCALE: 3/4" = 1'-0"

FRAMING NOTES

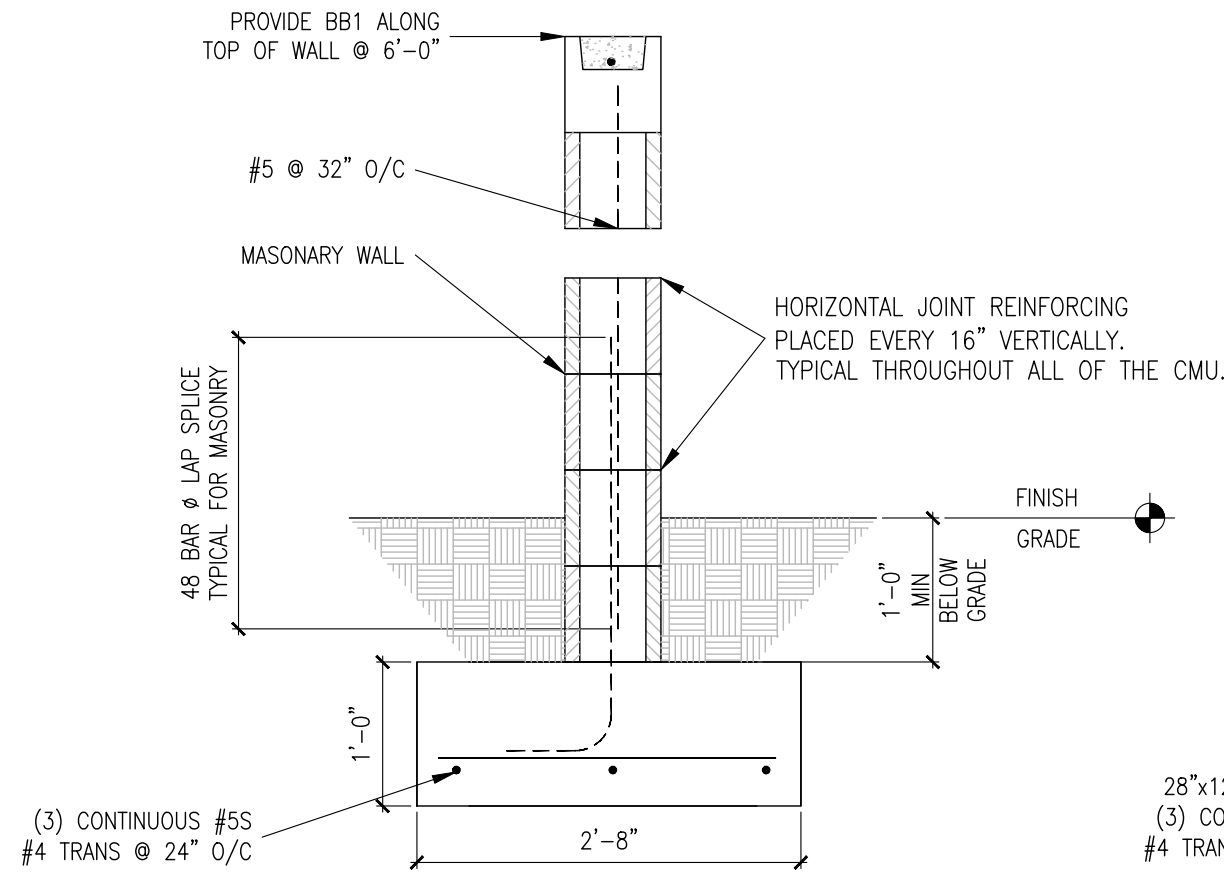
- U.N.O. ALL STRAPS FOR ROOF TRUSSES TO BE CONCRETE TO WOOD ROOF; (2) SIMPSON META16 WITH TSS MOISTURE BARRIER AND (10) 10d x 1 1/2" GALVANIZED NAILS.
- ALL PLYWOOD FOR WALL AND ROOF SHEATHING IS TO BE 3/4" (3/8") APA RATED EXPOSURE 1 CDX.
- ALL PLYWOOD FOR FLOOR SHEATHING SHALL BE 3/4" (3/8") APA RATED EXPOSURE 1 CDX GLUED AND NAILED TO TOP OF TRUSS WITH ADHESIVES MEETING THE REQUIREMENTS OF AFG-01 AND APPLIED IN ACCORDANCE WITH MANUFACTURER'S SPECIFICATIONS.
- ALL NAILS FOR TRUSS TO BEAM AND TRUSS TO TRUSS METAL CONNECTORS ARE TO BE GALVANIZED.
- LINTELS AND MASONRY BEAMS WERE DESIGNED BASED ON CAST-CRETE CONCRETE LINTELS.
- BOTTOM OF LINTELS ARE TO BE PLACED AT TOP OF WINDOW, DOOR AND CLEAR SPANS OPENINGS.
- LINTELS SHALL HAVE 4" NOMINAL BEARING (4").
- THE TRUSS FRAMING SHOWN IS SCHEMATIC IN NATURE. HOWEVER THE SUPPORTING STRUCTURE HAS BEEN DESIGNED UNDER THE ASSUMPTION THE FRAMING SCHEME SHOWN WILL CLOSELY PARALLEL FINAL TRUSS DESIGNERS LAYOUT. SUBMIT FINAL TRUSS DRAWINGS FOR THIS ENGINEER'S REVIEW AND APPROVAL.
- PLACE 2x4 PT TO ALIGN WITH TOP AND BOTTOM CHORDS OF ROOF TRUSSES SECURE 2x MEMBERS TO WALL WITH HILTI X-ZF, POWDER ACTUATED FASTENER, ZF 72 P8S36, .177" x 2 1/2" LONG, WITH WASHER @ 16" O.C.
- NAIL SPECIFICATIONS: 8d COMMON NAILS - .131" x 2 1/2" LONG, WITH WASHER @ 16" O.C.
 8d RING SHANK NAILS - .131" x 2 3/8", 10d COMMON NAILS - .148" x 3" LONG, AND
 10d STRAP NAILS - .148" x 1 1/2" GALVANIZED
- TRUSS REACTIONS AND UPLIFTS SHOWN ARE THE SAME ON EACH END UNLESS OTHERWISE SHOWN DIFFERENT.
- WOOD BEARING WALLS AND HEADERS HAVE BEEN DESIGNED BASED ON RATIONAL ANALYSIS.
- ALL ELEVATIONS ARE REFERENCED FROM 0'-0", FINISH FLOOR, UNLESS NOTED OTHERWISE. SEE PRODUCT APPROVALS FOR EXACT ROUGH OPENING HEIGHTS AND WIDTHS.

FOUNDATION NOTES

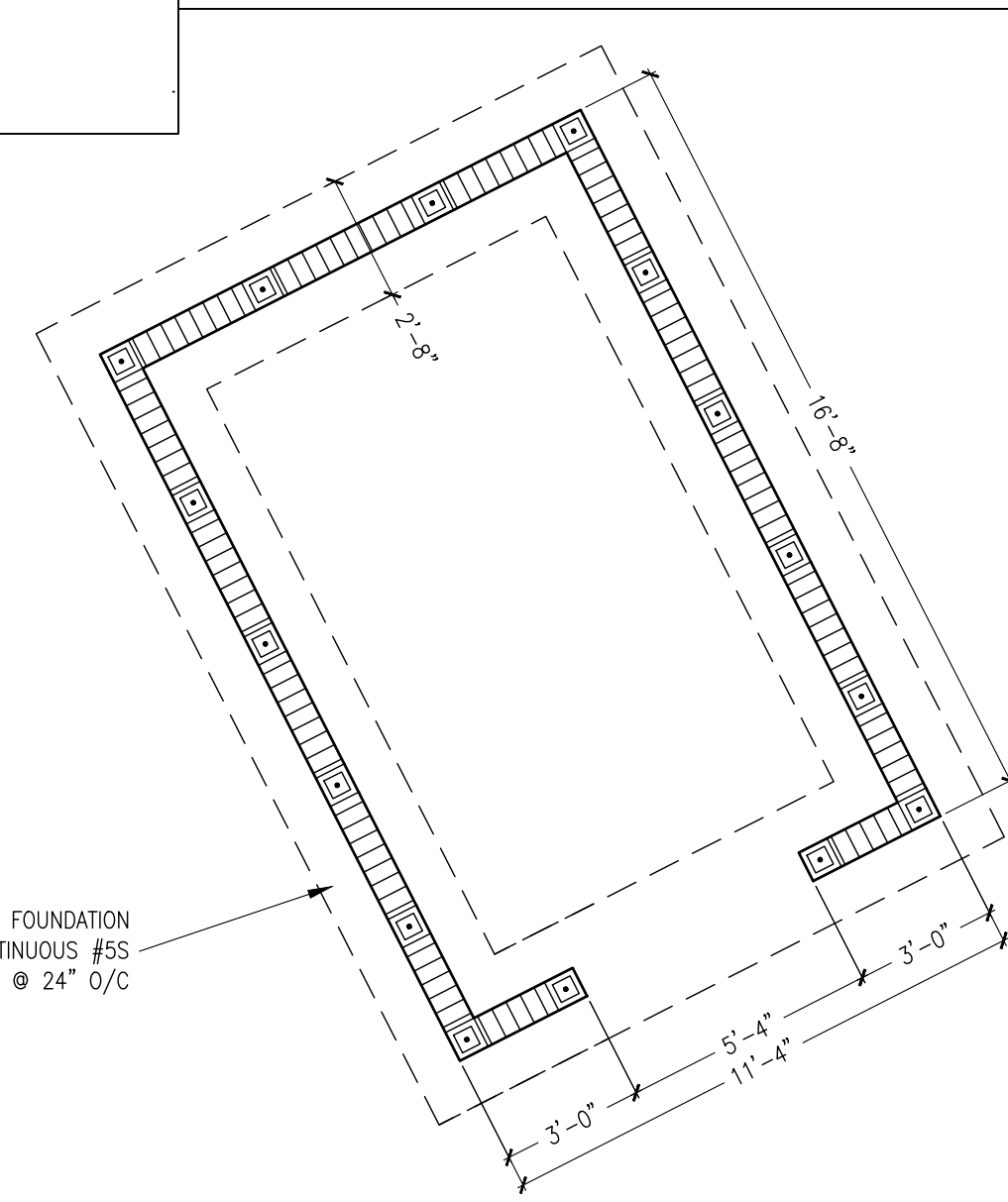
- FLOOR SHALL BE 4" THICK CONCRETE SLAB WITH 6x6 W1.4xW1.4 WMM OVER 6 MIL VAPOR BARRIER, ON COMPACTED FILL. SEE GENERAL NOTES FOR COMPACTING REQUIREMENTS.
- TOP OF FINISHED SLAB SHALL BE ±0'-0".
- COLUMN AND FOOTING CENTERLINES, SHALL COINCIDE UNLESS DIMENSIONED OTHERWISE.
- REFERENCE ELEVATION ±0'-0". SEE SURVEY PLOT FOR NODS.
- PROVIDE A COMPLETE TREATMENT FOR THE PREVENTION OF SUBTERRANEAN TERMITES. TREATMENT SHOULD BE IN ACCORDANCE WITH THE RULES AND LAWS AS ESTABLISHED BY THE FLORIDA DEPARTMENT OF AGRICULTURE AND CONSUMER SERVICES.
- PROVIDE ISOLATION JOINTS BETWEEN INTERIOR AND EXTERIOR SLABS ON GRADE: PROVIDE (2) 15LB FELT PAPER AT THE JOINT.
- COORDINATE SLAB ELEVATIONS, STEPS, AND SLOPES WITH ARCHITECTURAL DRAWINGS.
- SEE ARCHITECTURAL DRAWINGS FOR THE ORIENTATION OF THE BUILDING.
- WINDOWS, DOORS AND ROUGH OPENINGS ARE TO BE COORDINATED WITH THE WINDOW/DOOR TYPES AND LOCATIONS NOTED ON THE ARCHITECTURAL DRAWINGS AND WITH THE MANUFACTURER'S SPECIFICATIONS.
- SEE ARCHITECTURAL DRAWINGS FOR WALKWAY SLAB LAYOUT.
- INDICATES #5 REINFORCING BAR IN CELLS FILLED WITH GROUT. ENDS OF REINFORCING BARS SHALL BE HOOKED INTO FOUNDATION, BOND BEAM OR THE BEAMS WITH AN ACI STANDARD 90° HOOK. BARS SHALL BE PLACED AS SHOWN IN THE PLANS.
- SPLICES IN REINFORCING BARS SHALL NOT BE LESS THAN 48 BAR DIAMETERS (#5 = 30", #6 = 36") U.N.O. AND REINFORCING SHALL BE CONTINUOUS.
- RATIONAL ANALYSIS WAS PERFORMED TO DETERMINE SIZE AND STEEL REINFORCING FOR ALL FOUNDATIONS. DESIGNED WAS BASED ON AN ALLOWABLE SOIL BEARING CAPACITY OF 2,500 PSF. TRANSFER REINFORCING (TOP STEEL) HAS BEEN DELETED UNLESS NOTED OTHERWISE.
- VERTICAL REINFORCING IN CMU SHALL BE #5'S WITH A #4 STARTER DOWEL AS SHOWN ON THIS PLAN. U.N.O. NOTED IN THE PLAN. ONE #5 SHALL BE:
 - IN ALL WALL INTERSECTIONS
 - CHANGES IN ELEVATION
 - EACH SIDE OF ALL OPENINGS
 - ALL CORNERS
- STRUCTURAL DESIGN IS IN ACCORDANCE WITH A.C.I. 530-11/ASCE 5-11, BUILDING CODE REQUIREMENTS FOR MASONRY STRUCTURES AND THE COMMENTARY. CONSTRUCTION SHALL BE IN ACCORDANCE WITH A.C.I. 530-11/ASCE 5-11, USING: f'm = 1,500 PSI, TYPE S MORTAR, ASTM C476 GROUT (3000 PSI), UNITS LAID IN RUNNING BOND.
- A SPECIAL INSPECTOR SHALL INSPECT ALL REINFORCED MASONRY STRUCTURE AS REQUIRED BY FBC 2122.2.4. SAID INSPECTOR SHALL ONLY BE AN ARCHITECT, ENGINEER, OR THEIR DULY AUTHORIZED QUALIFIED REPRESENTATIVE.



6 SHEATHING NAILING AT HIPSET GIRDERS
 ST-1 SCALE: 3/4" = 1'-0"



2 GENERATOR ENCLOSURE AND SECTION
 ST-1 SCALE: 3/4" = 1'-0"



MARK	WIDTH	LENGTH	THICKNESS	BOTTOM REINF.		TOP REINF.	T.O.F.
				SHORT	LONG		
FM-12x16	12"	CONTINUOUS	16"	-	(2) #5's	-	VARIES
CW-16x12	16"	CONTINUOUS	12"	-	(2) #5's	-	VARIES
TE-1	12"	SEE PLAN	10"	-	(2) #5's	-	VARIES

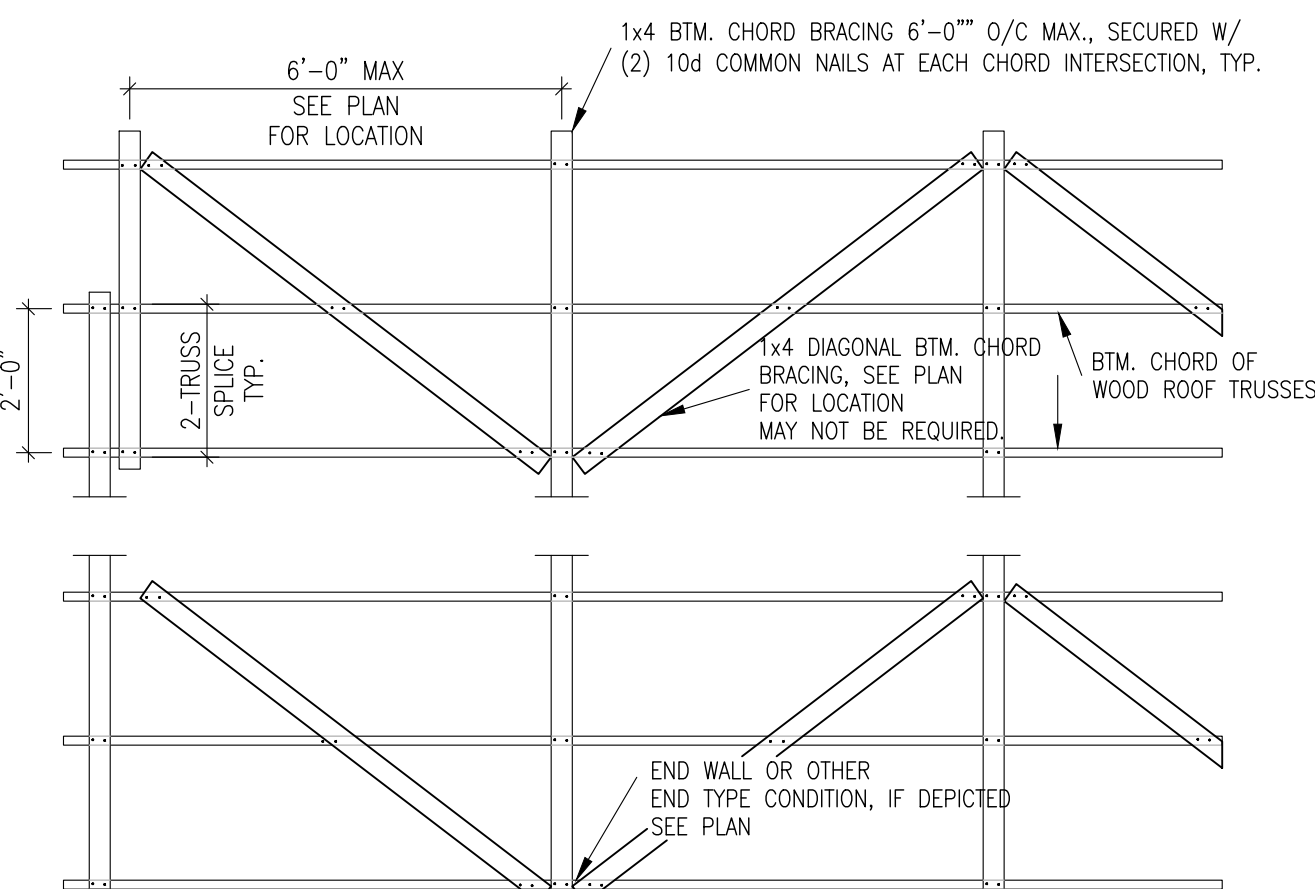
PROVIDE CORNER BARS, SAME SIZE AND QUANTITY AS BAR IN FOUNDATION, WITH 30° LEG EACH WAY.

MARK	SIZE & DESCRIPTION	BASE PLATE OR REINFORCEMENT	REMARK

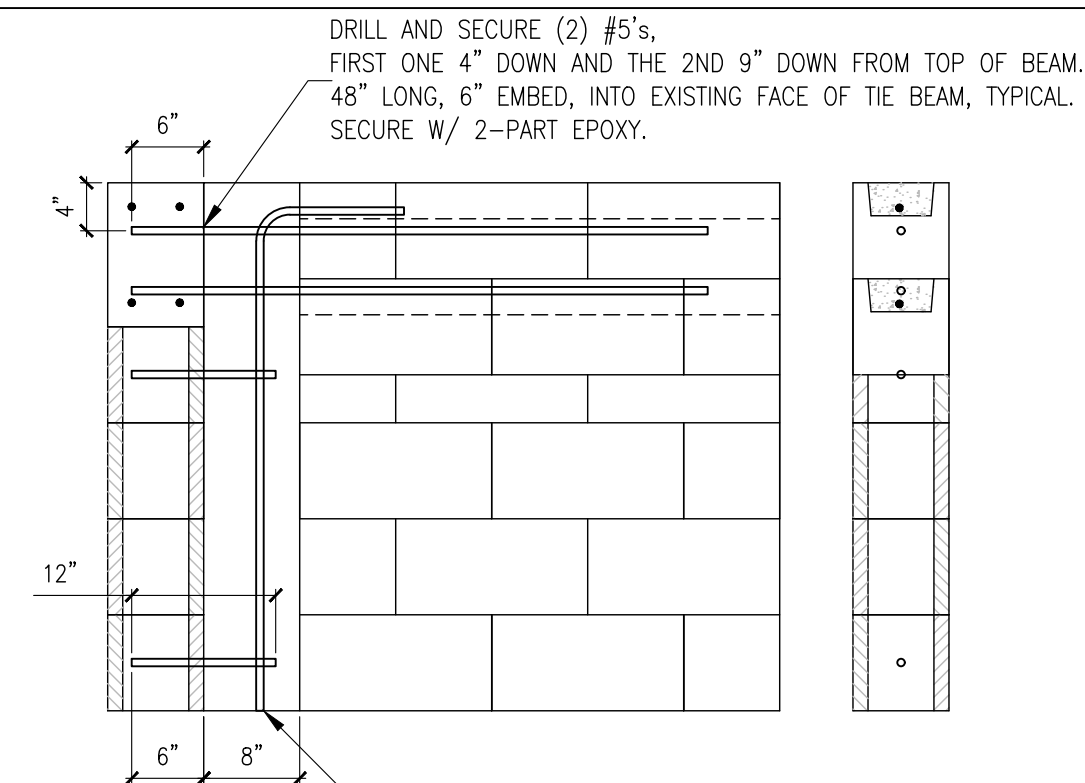
INSPECTOR NOTE
 STRUCTURE WAS DESIGNED BASED ON THE 2014 FLORIDA BUILDING CODE, RESIDENTIAL, 5th EDITION.

MARK	DESCRIPTION	f'c (psi)	SIZE W" x H"	REINFORCEMENT			STIRRUPS		REMARKS
				BTM.	TOP	MID	SIZE	SPACING	
TB1	CONCRETE	3000	8x10	(2) #5	(2) #5	-	#3	32" O/C	-

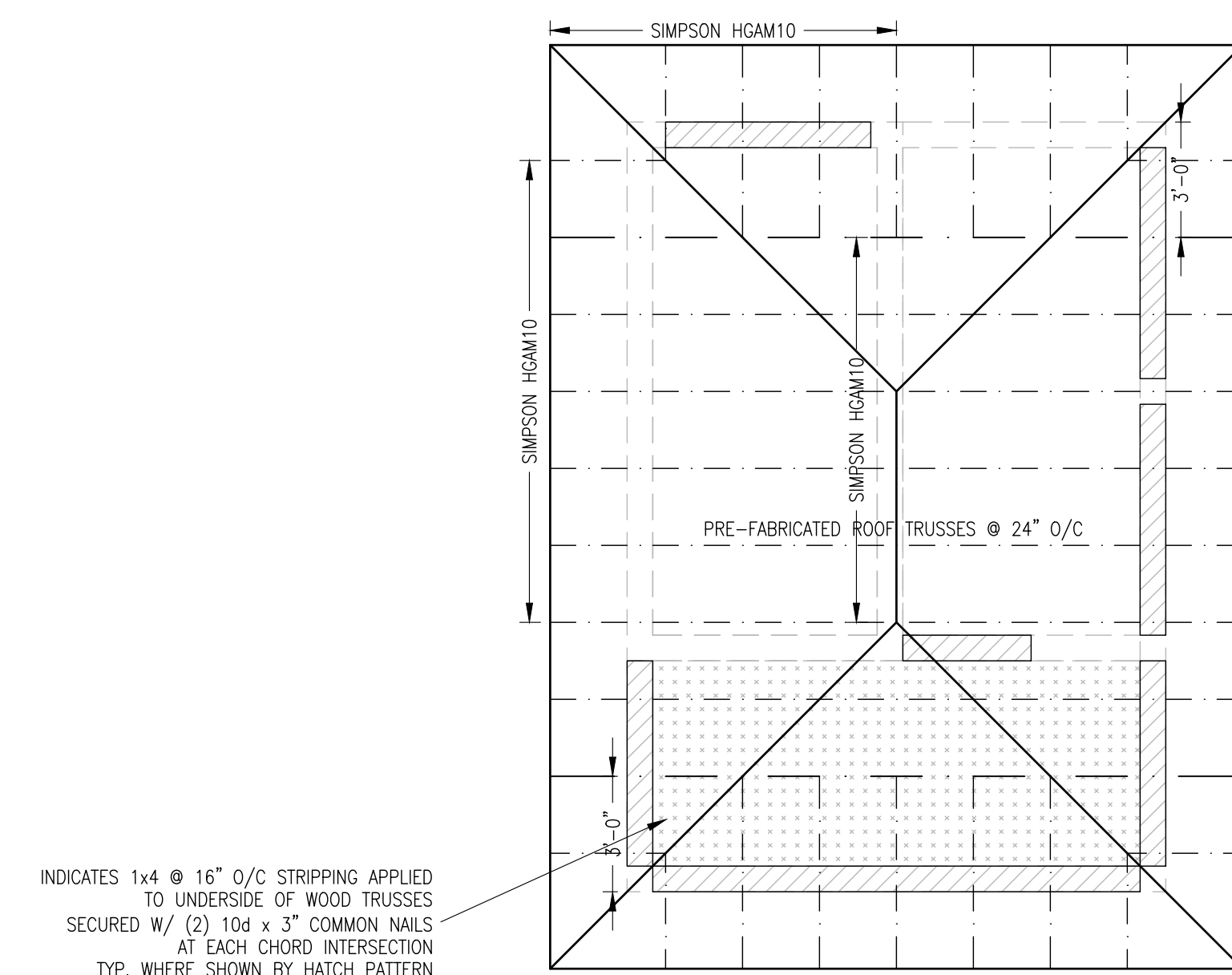
INDICATES OPENING BELOW / T.O.B.= TOP OF BEAM / B.O.L.= BOTTOM OF LINTEL / T.O.A.= TOP OF ARCH / T.O.S.= TOP OF SLAB
 ABBREVIATIONS E.E. = EACH END, O/C = ON CENTER, F.E.S. = FROM EACH SUPPORT, T.O. = THROUGHOUT



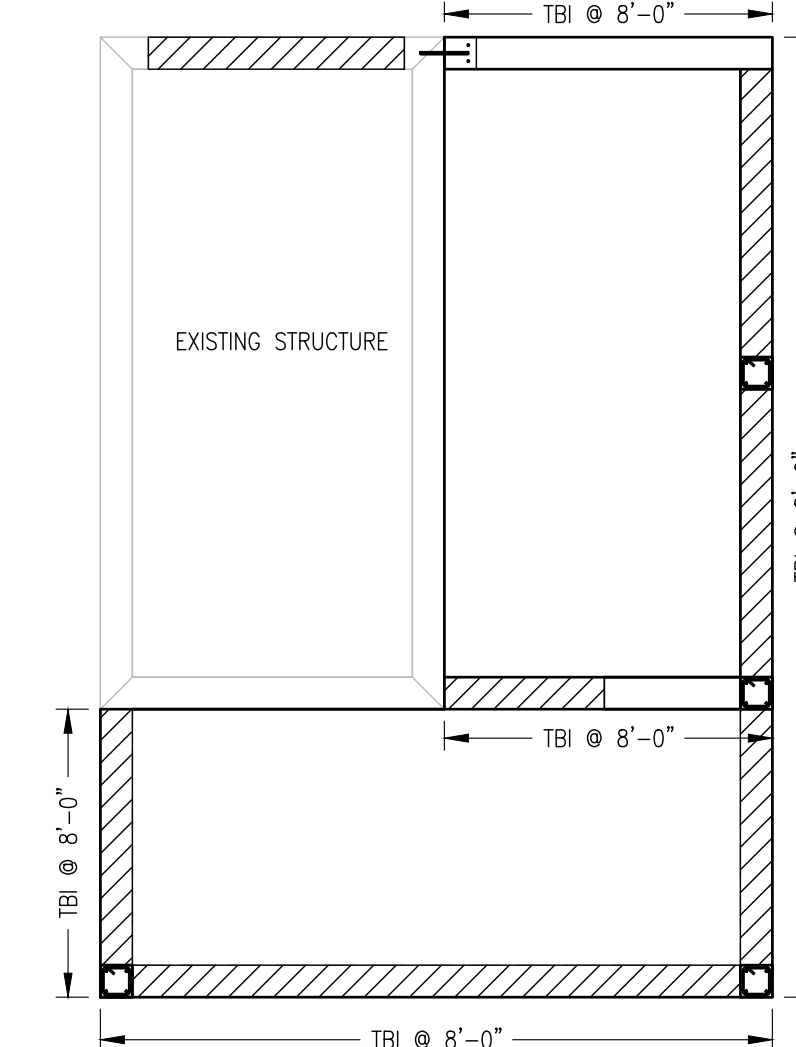
7 BTM. CHORD BRACING
 ST-1 SCALE: 3/8" = 1'-0"



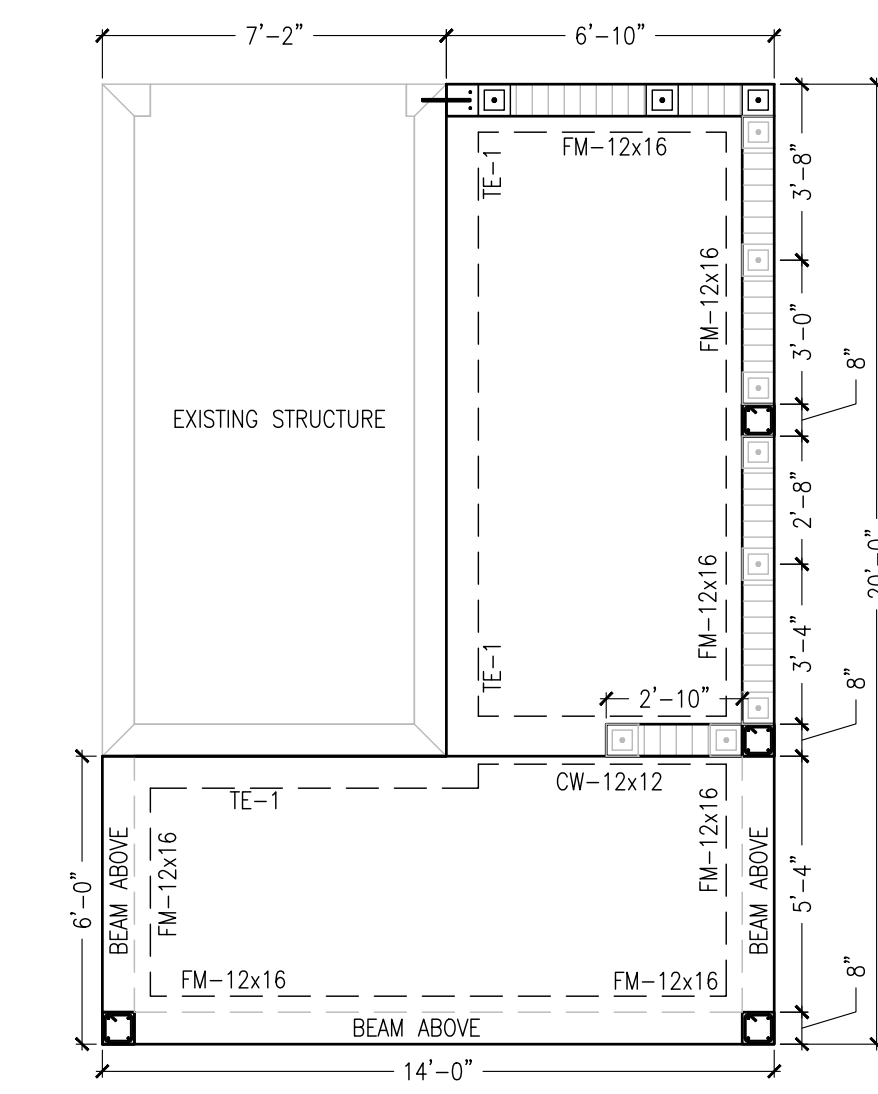
8 STARTER COLUMN
 ST-1 SCALE: 3/4" = 1'-0"



ROOF FRAMING PLAN
 SCALE: 1/4" = 1'-0"



1ST LIFT BEAM PLAN
 SCALE: 1/4" = 1'-0"



FOUNDATION PLAN
 SCALE: 1/4" = 1'-0"

The use of these specifications and plans shall be restricted to the original client and site for which they were prepared. Any reproduction or distribution is expressly limited to such use. Any other reproduction, reuse, or disclosure by any method, in whole or in part, is prohibited. These drawings and specifications contain proprietary information and shall remain with Specialty Engineering Consultants, Inc.

SHEET INFORMATION

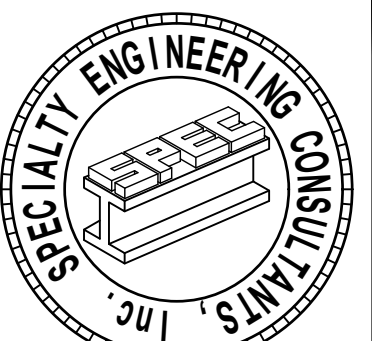
TENNIS OFFICE

PROJECT INFORMATION

WOODFIELD HUNT CLUB
 4420 WOODFIELD BLVD
 BOCA RATON, FL

CLIENT INFORMATION

SLATTERY & ASSOCIATES
 2030 NW BOCA RATON BLVD
 BOCA RATON, FL



SPECIALTY ENGINEERING CONSULTANTS, Inc.
 1599 SW 30th AVE.
 SUITE #20
 BOYNTON BEACH, FL 33426

DADE - BROWARD - PALM BEACH
 FL. CA. #009217

561 - 752 - 5440 OFFICE
 561 - 752 - 5542 FAX

FILE NAME:

SCALE 1/4" = 1'-0"

DATE 07/21/16

RVD. BY DAL

DRWN. BY DAL

REVISION 0

SEAL
 D. MARK LeBLANC, PE FL #35683
 GARY McDOUGLE, E. FL #56214
 D. ADAM LeBLANC, PE FL #77012

SHEET # OF
 ST-1 6