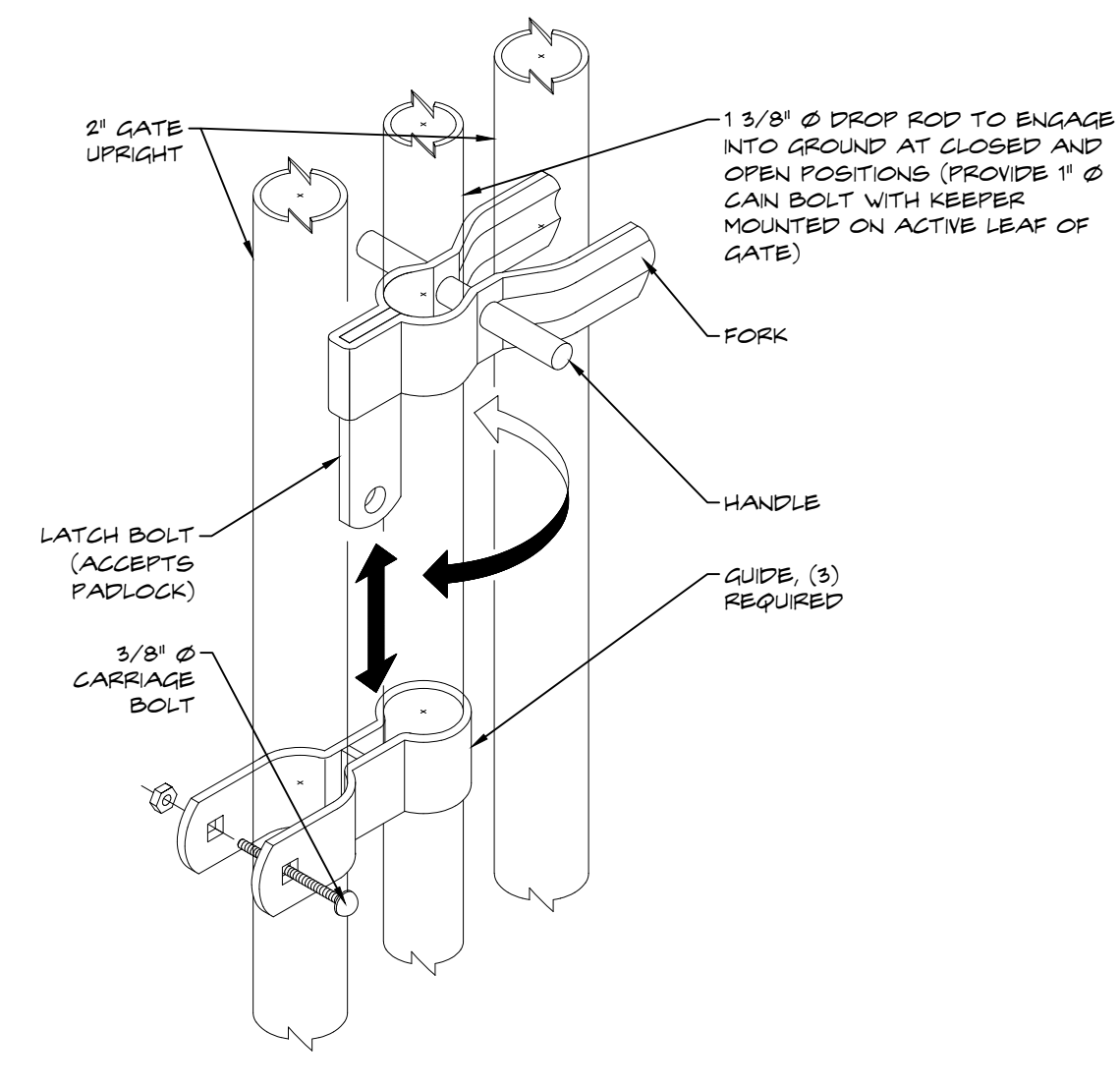
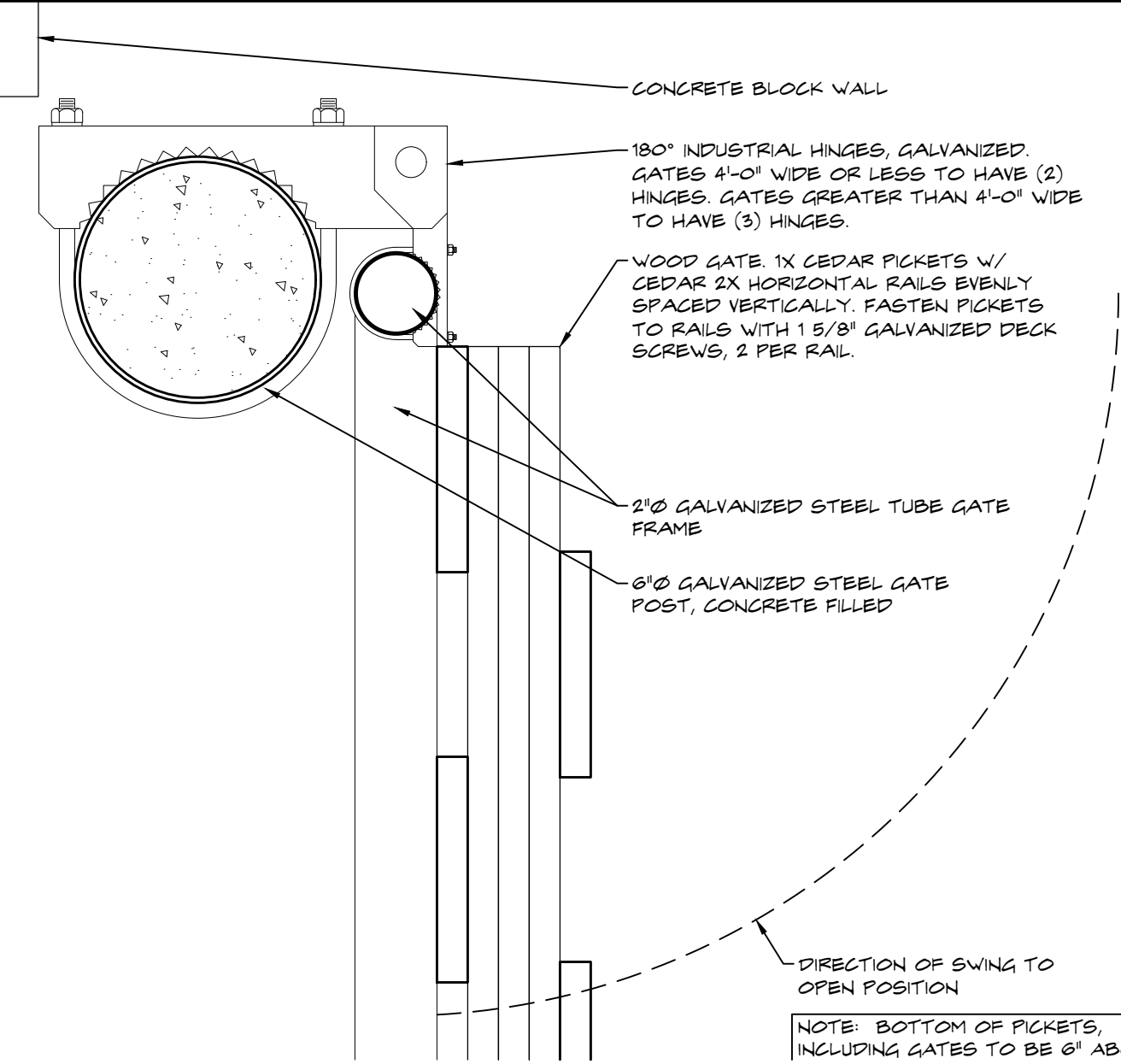


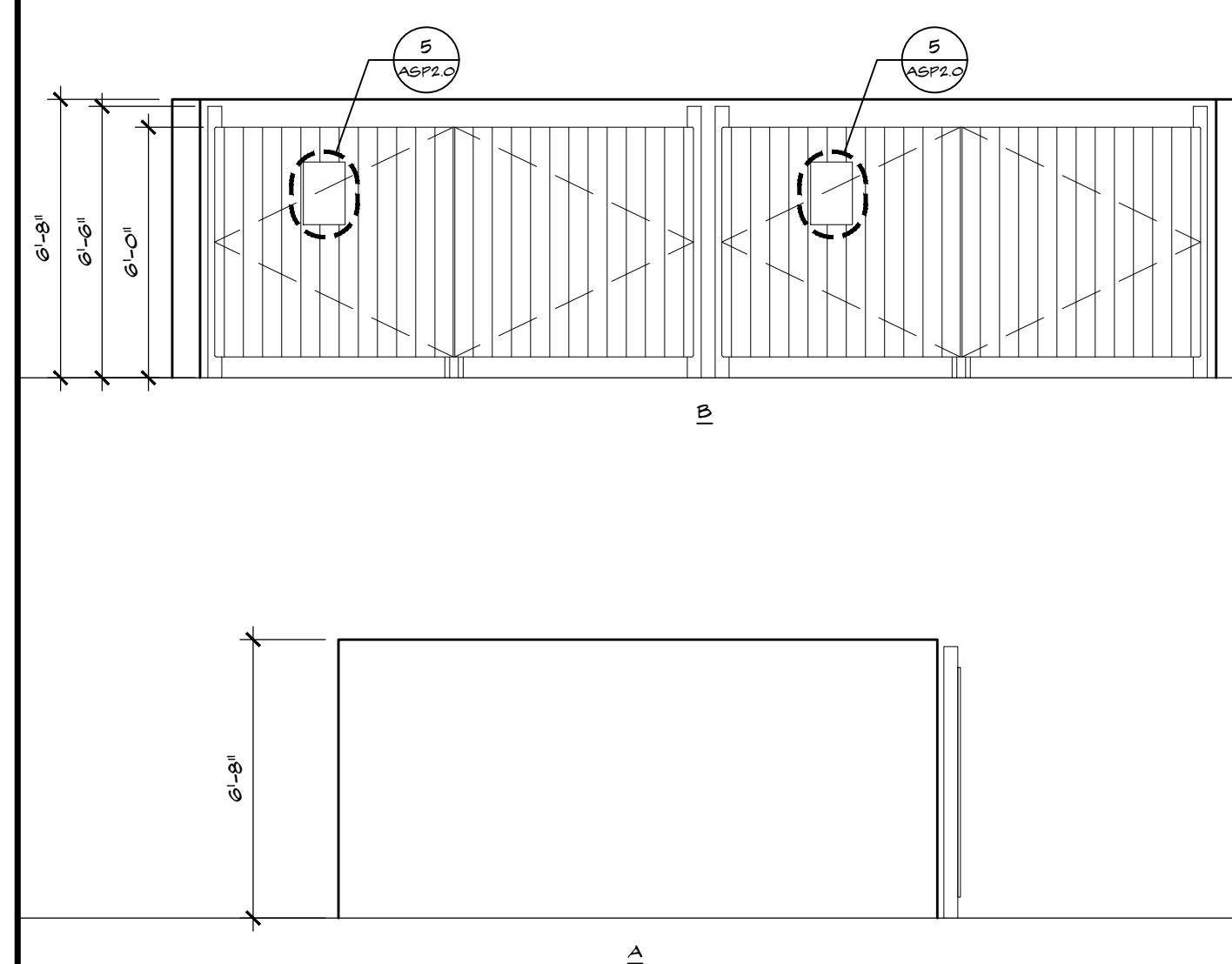
5 DUMPSTER SIGNAGE  
SCALE: 1/2" = 1'-0"



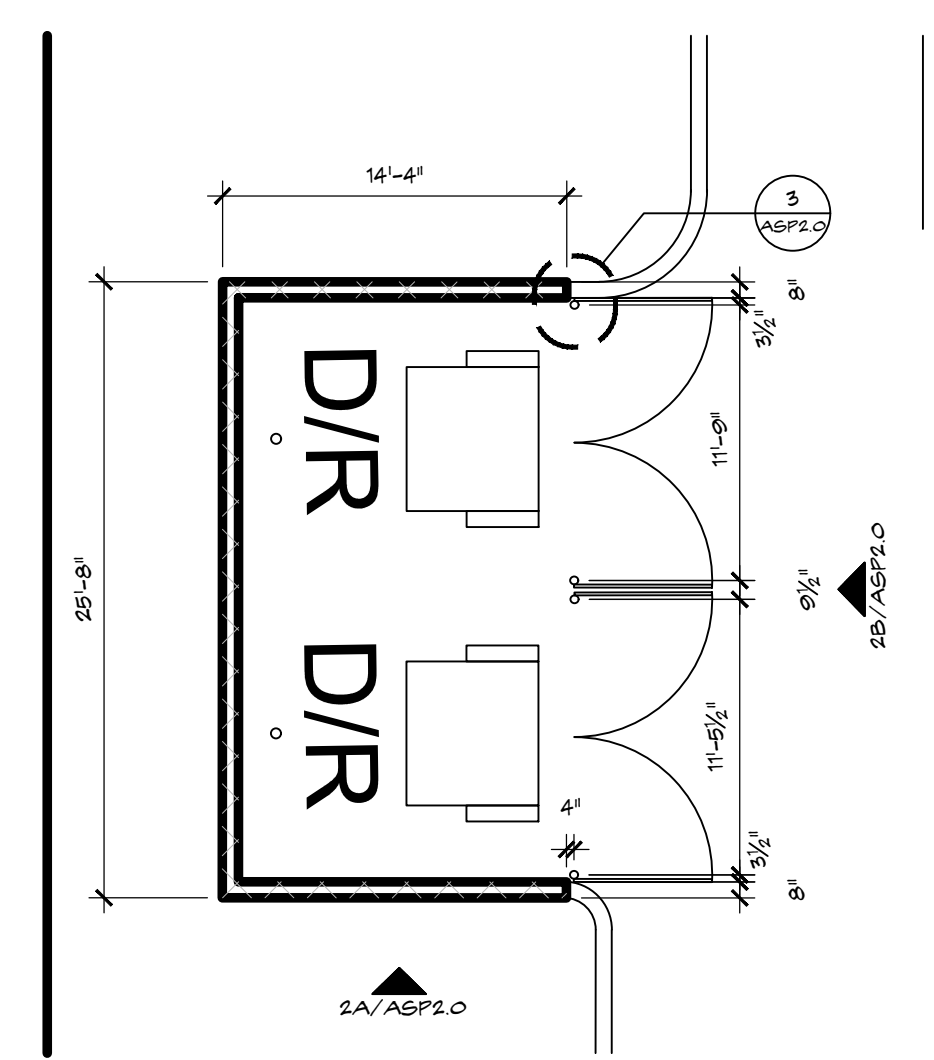
4 LATCH AND DROP ROD DETAIL  
SCALE: 3/4" = 1'-0"



3 DUMPSTER ENCLOSURE HINGE DETAIL  
SCALE: 3/4" = 1'-0"



2 DUMPSTER ENCLOSURE ELEVATIONS  
SCALE: 1/4" = 1'-0"



1 DUMPSTER ENCLOSURE PLAN  
SCALE: 1/8" = 1'-0"

CODE INFORMATION					
APPLICABLE CODES: -2014 FLORIDA BUILDING CODE -FLORIDA FIRE PREVENTION CODE 5TH EDITION -2012 NATIONAL FIRE PROTECTION ASSOCIATION 101 LIFE SAFETY					
BUILDING INFORMATION					
LOT SIZE: CONSTRUCTION TYPE: VB, FULLY SPRINKLERED BUILDING AREA MODIFICATION CALCULATION (PER 508.2 OF FBC 2014): EQUATION 5-2: 9,500 + 7,125 + 19,000 = 35,625 S.F. BUILDING AREA ALLOWED: 35,625 S.F. / FLOOR BUILDING AREA PROPOSED (GROSS): 1ST FLOOR: 19,150 S.F. 2ND FLOOR: 5,508 S.F. TOTAL: 24,658 S.F. BUILDING HEIGHT INCREASE (PER 504.2 OF FBC 2014): ALLOWED: 2 STORES/60'-0" MAXIMUM BUILDING HEIGHT PROPOSED: 2 STORES / 38'-0" AT HIGHEST POINT BUILDING SHALL BE RODENT PROOF.					
OCCUPANT LOAD ANALYSIS					
OCCUPANCY CLASSIFICATION: GROUP E, EDUCATIONAL W/ ACCESSORY USE					
EDUCATIONAL OCCUPANCY	AREA (S.F.)	S.F. / PERSON	OCCUPANT LOAD		
CLASSROOM 108	574.7	35 NET	16		
CLASSROOM 110	569.0		16		
CLASSROOM 111	631.1		18		
CLASSROOM 114	631.1		18		
CLASSROOM 118	631.1		18		
CLASSROOM 121	569.0		16		
CLASSROOM 136	358.2		10		
CLASSROOM 137	358.2		10		
CLASSROOM 140	359.6		10		
CLASSROOM 141	354.6		10		
CLASSROOM 144	352.1		10		
CLASSROOM 145	351.7		10		
CLASSROOM 148	351.7		10		
CLASSROOM 149	350.9		10		
CLASSROOM 152	357.2		10		
CLASSROOM 154	354.1		10		
TUTORING 155	124		4		
EDUCATIONAL SUB-TOTAL	7,122.3	35 NET	206		
BUSINESS OCCUPANCY	AREA (S.F.)	100 GROSS	OCCUPANT LOAD		
1ST FL. OFFICES, CLINIC, THERAPY	892.2		9		
2ND FL. OFFICES, TEACHERS LOUNGE, MEETING ROOM, RESOURCE ROOM, SOCIAL WORKER, THERAPIST, OPEN OFFICE, COPY ROOM	2,833.6		29		
ENTRANCE LOBBY	458.4		5		
KITCHEN	649.4		7		
BUSINESS SUB-TOTAL	4,833.6	100 GROSS	50		
ASSEMBLY OCCUPANCY	AREA (S.F.)	15 NET	OCCUPANT LOAD		
MULTI-PURPOSE ROOM	3,289.5	15 NET	220		
ASSEMBLY SUB-TOTAL	3,289.5	15 NET	220		
OCCUPANCY TOTAL	15,243.4		476		
OCCUPANCY PER FLOOR BREAKDOWN					
1ST FLOOR	12,409.8		447		
2ND FLOOR	2,833.6		29		
PLUMBING FIXTURE REQUIREMENT ANALYSIS					
BASED ON TABLE 403.1 - MINIMUM NUMBER OF REQUIRED FIXTURES E - EDUCATIONAL USE GROUP = 206 OCCUPANTS					
NUMBER OF PERSONS OF EACH SEX 103 MALE & 103 FEMALE OCCUPANTS	WATER CLOSETS (URNALS)		LAVATORIES	DRINKING	SERVICE
	MALE	FEMALE	MALE	FEMALE	
1 - 50	1	1	1	1	
51-100	1	1	1	1	1
101-150	1	1	1	1	1
FIXTURES REQUIRED BY THE PLUMBING CODE	3	3	3	3	2 1
SUB-TOTAL FIXTURES PROVIDED	18 UNSEX		50	4	1
BASED ON TABLE 403.1 - MINIMUM NUMBER OF REQUIRED FIXTURES B - BUSINESS USE GROUP = 50 OCCUPANTS					
NUMBER OF PERSONS OF EACH SEX 25 MALE & 25 FEMALE OCCUPANTS	WATER CLOSETS (URNALS)		LAVATORIES	DRINKING	SERVICE
	MALE	FEMALE	MALE	FEMALE	
1 - 25	1	1			
1 - 40			1	1	
FIXTURES REQUIRED BY THE PLUMBING CODE	1	1	1	1	1 1
SUB-TOTAL FIXTURES PROVIDED	3	3	3	3	1 1
TOTAL PLUMBING FIXTURES PROVIDED	24		56	5	2