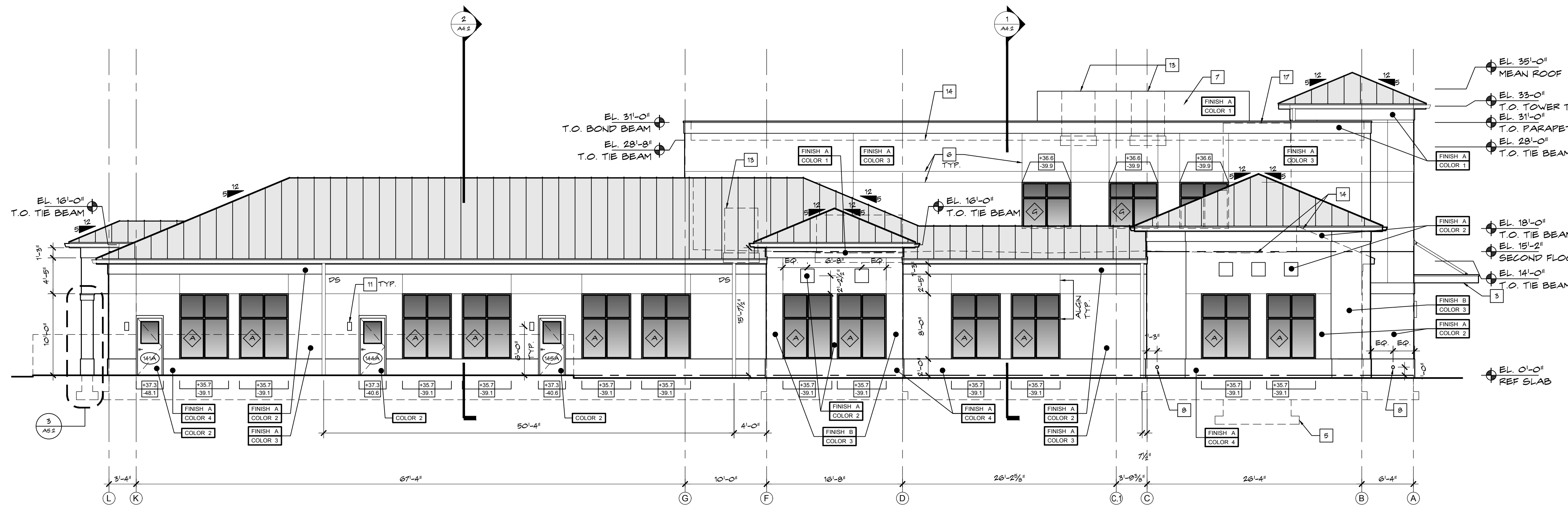


1 PROPOSED SOUTH BUILDING ELEVATION  
SCALE: 1/8" = 1'-0"

### ELEVATION KEY NOTES

- GUTTER REFER TO ROOF PLAN FOR BASIS OF DESIGN
- SPANDREL GLASS, NON-INSULATED GLASS
- PRE-FABRICATED CANOPY, REFER TO 3/A5.1
- STANDING BEAM ROOF, REFER TO A1.3 FOR SPECIFICATION
- LINE OF ELEVATOR SHAFT BEYOND
- STUCCO REVEALS, BASIS OF DESIGN, REFER TO 3/A5.2
- MECHANICAL UNIT SCREEN, REFER TO 9/A6.1
- ROOF DRAINAGE OVERFLOW SCUPPER BASIS OF DESIGN
- 1'-8" X 1'-8" ACCENT IN STUCCO, FINISH TO MATCH SURROUNDING STUCCO
- EXTERIOR GRADE, NON-CORROSIVE WATER FOUNTAIN, REFER TO PLUMBING DRAWINGS FOR SPECIFICATION. HEIGHT INDICATED IS TO SPOUT
- DECORATIVE SURFACE MOUNTED WALL SCORGE
- SURFACE MOUNTED FLOOD LIGHT/WALL PACK, REFER TO ELECTRICAL DRAWINGS FOR SPECIFICATION
- MECHANICAL UNIT, REFER TO MEP DRAWINGS
- LINE OF ROOF BEYOND
- BUILDING SIGNAGE, REFER TO 6/A5.2 FOR ADDITIONAL INFORMATION
- ALUMINUM CAP FLASHING, COLOR TO MATCH ADJACENT CORNICE
- ELEVATOR TOWER BEYOND



2 PROPOSED WEST BUILDING ELEVATION  
SCALE: 1/8" = 1'-0"

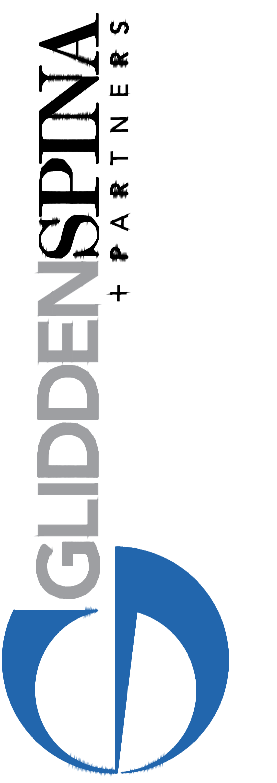
### LEGEND

DS DOWNSPOUT, REFER TO ROOF PLAN FOR BASIS OF DESIGN  
CJ CONTROL JOINT

FINISH X STUCCO FINISH AS FOLLOWS:  
 FINISH A - SMOOTH STUCCO  
 FINISH B - TEXTURED STUCCO

PANT COLORS TO BE BENJAMIN MOORE OR QUAL AND ARE AS FOLLOWS:  
 COLOR 1 - #0C-117 SIMPLY WHITE  
 COLOR 2 - #935 LEMON CHIFFON  
 COLOR 3 - #345 WINTER SUNSHINE  
 COLOR 4 - #233 CREAM FLEECE  
 COLOR 5 -

XXX WIND PRESSURE LOADS



Architecture - Interior Design  
Keith M. Spina # AFI33019

New Building For:  
**OPPORTUNITY INC.**  
EARLY LEARNING CENTER  
4171 Westgate Avenue  
Palm Beach County, Florida

THESE DRAWINGS ARE FOR THE EXCLUSIVE USE OF GLIDDEN SPINA + PARTNERS, INC. AND MAY NOT BE DUPLICATED, REPRODUCED OR USED IN ANY MANNER WITHOUT THE EXPRESS WRITTEN CONSENT OF GLIDDEN SPINA + PARTNERS, INC. ALL RIGHTS RESERVED.

Revisions:


Project no: 14224  
Date: 09.09.16  
Drawn by: WS  
Project Architect: WC / DR


**A3.1**  
09.09.16 BID/PERMIT

BUILDING ELEVATIONS