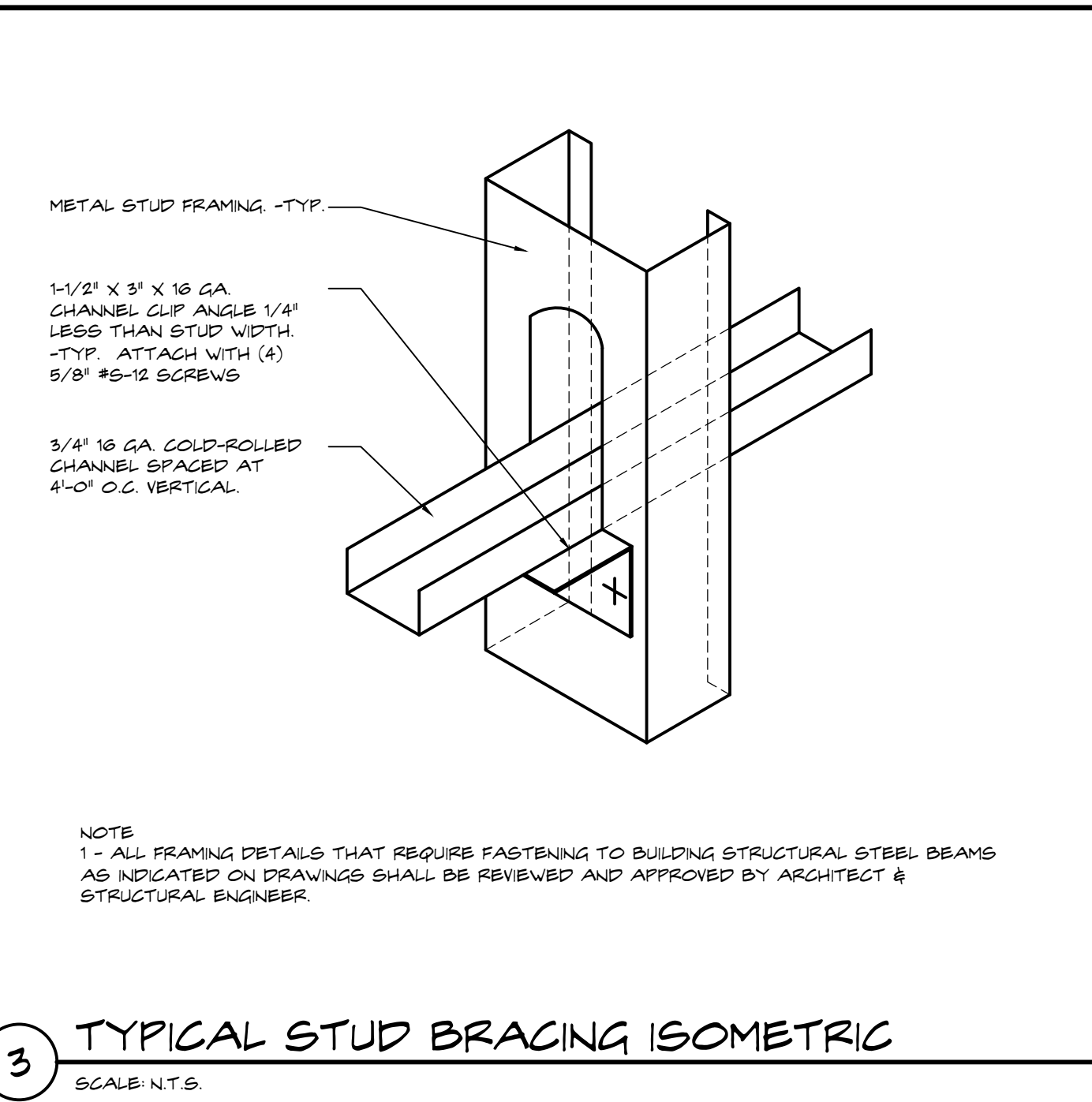
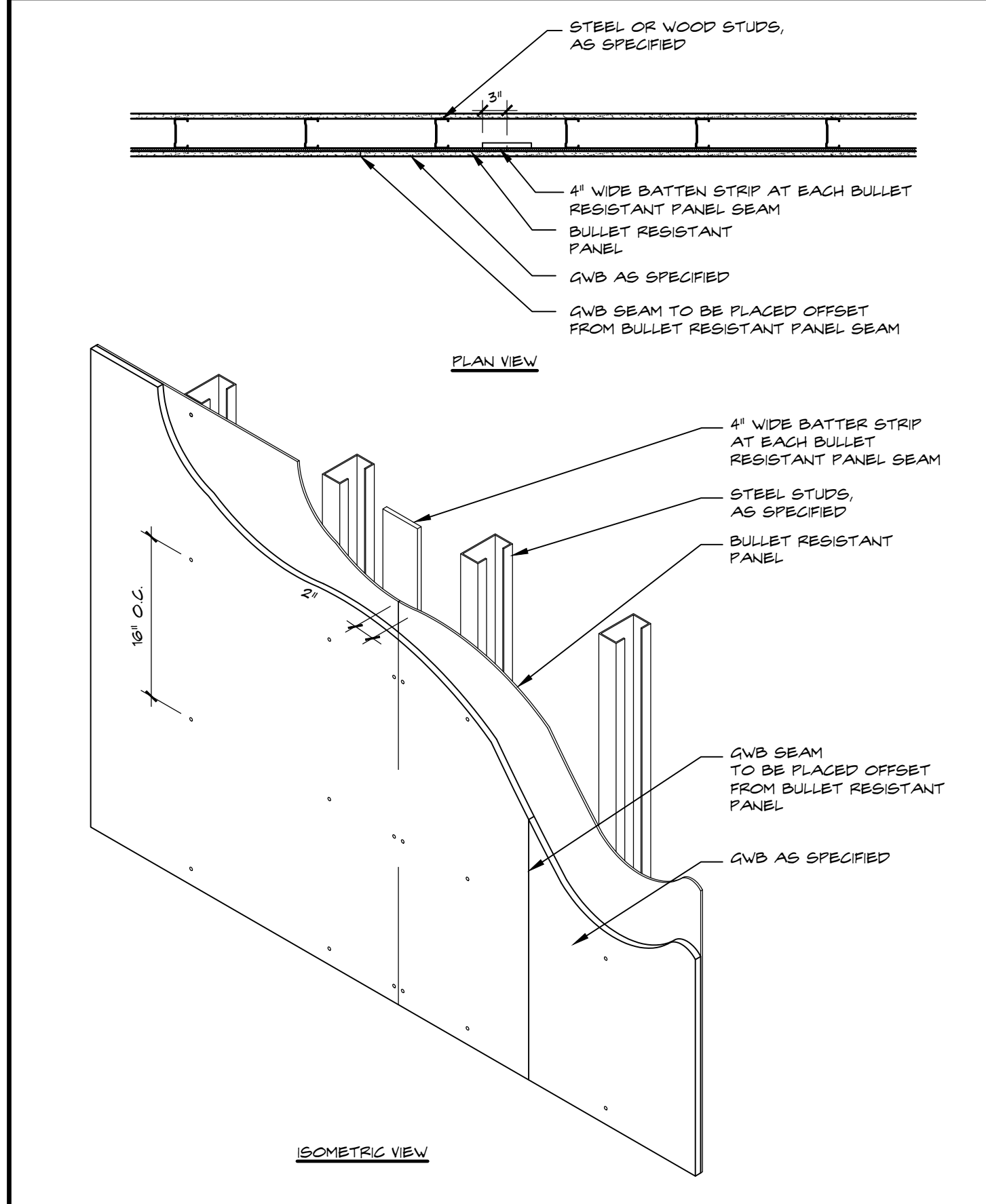


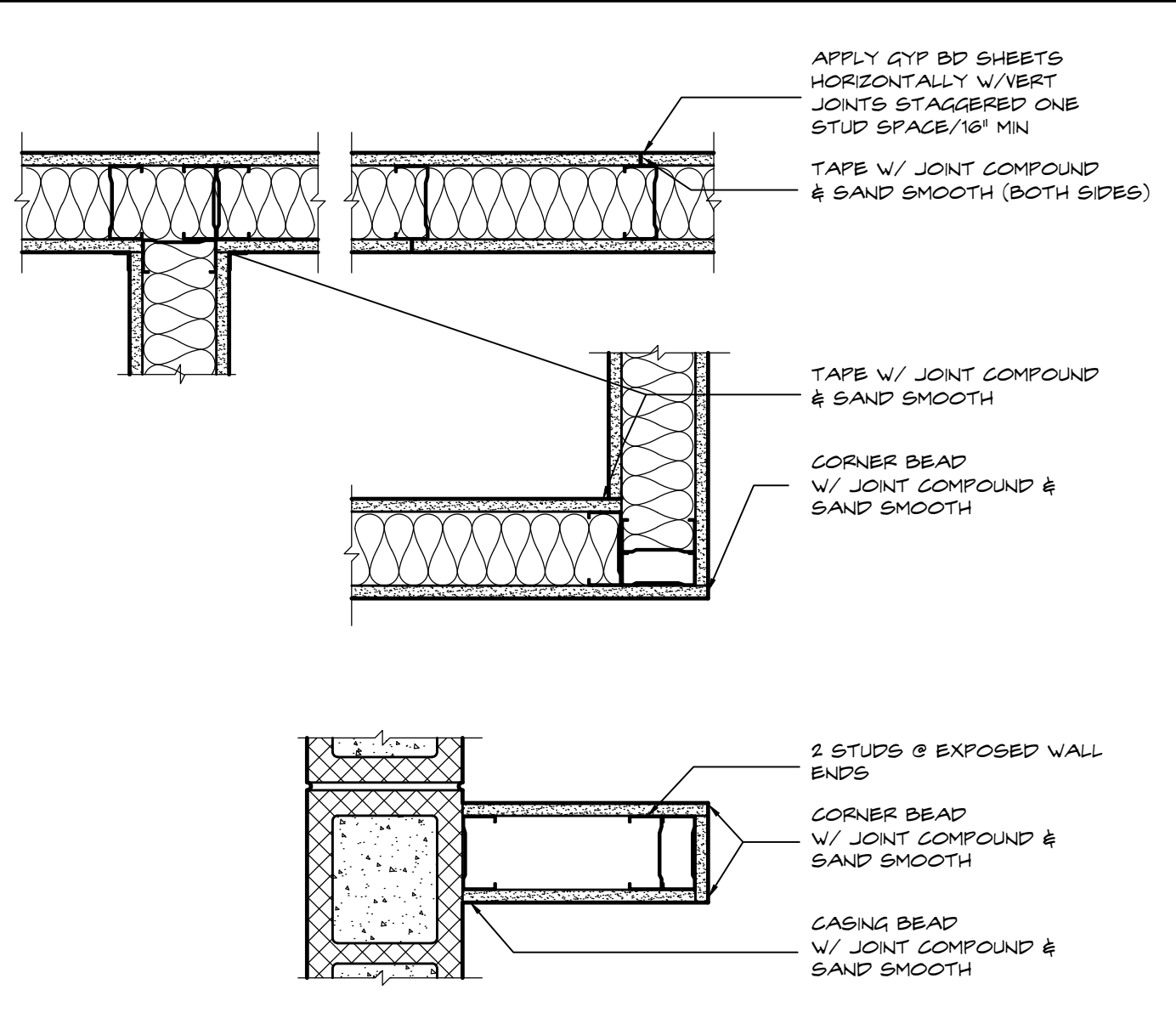
6 TYPICAL BLOCKING DETAIL
SCALE: 1-1/2" = 1'-0"



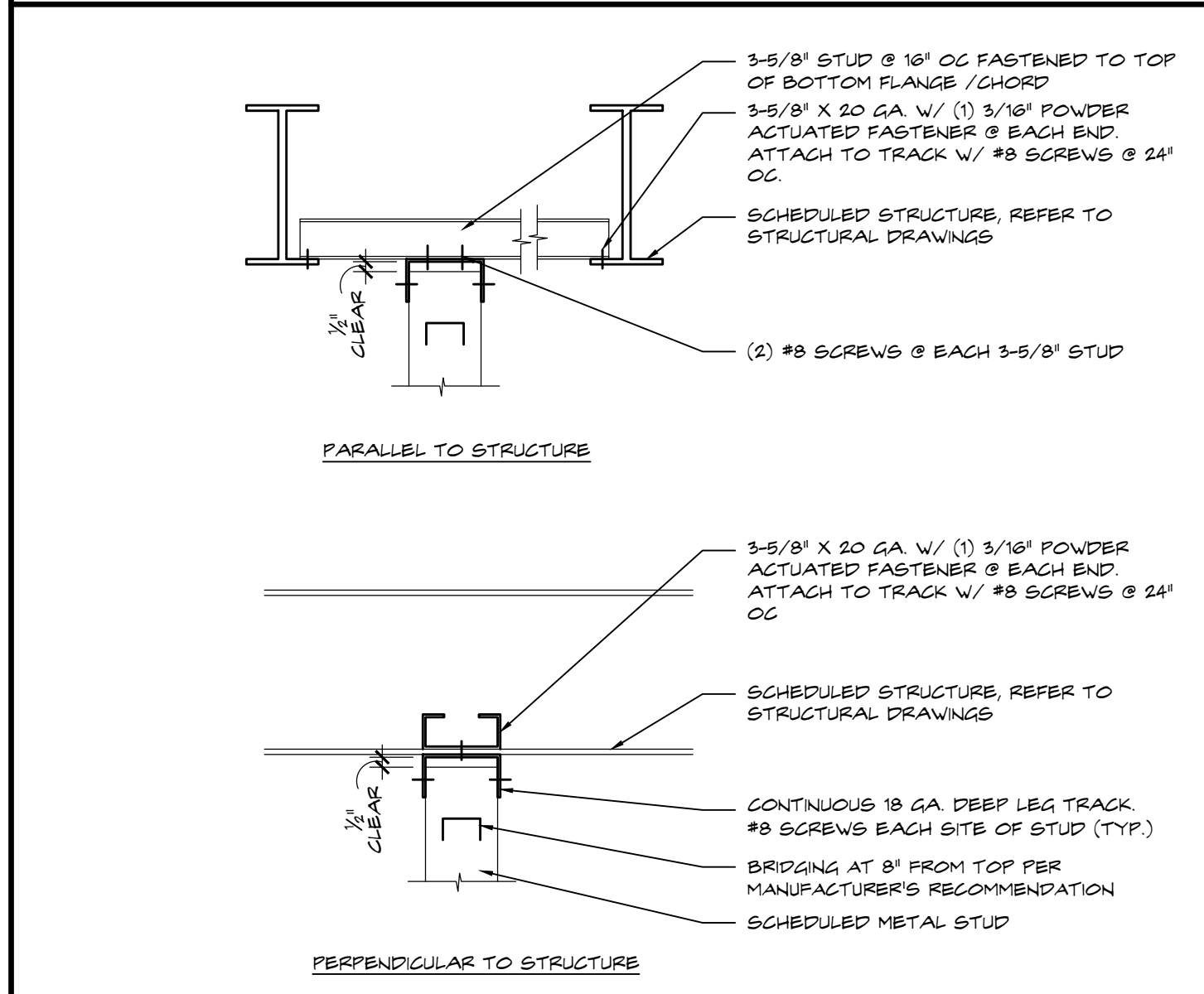
3 TYPICAL STUD BRACING ISOMETRIC
SCALE: N.T.S.



5 BULLET RESISTANT PANEL
SCALE: 1-1/2" = 1'-0"



2 TYPICAL PARTITION INTERSECTIONS
SCALE: 1-1/2" = 1'-0"



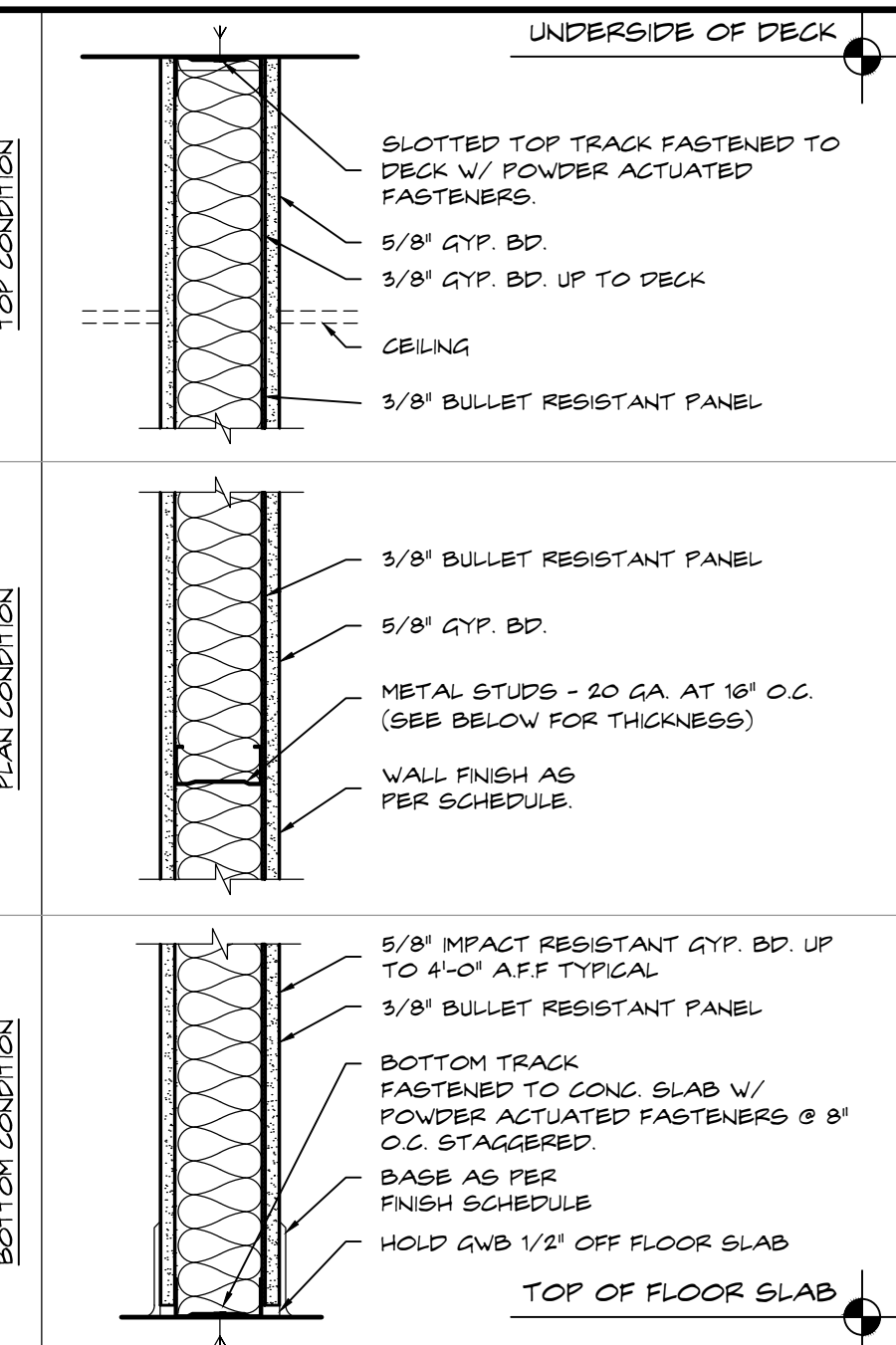
4 TYPICAL PARTITION INTERSECTIONS
SCALE: 1-1/2" = 1'-0"

INTERIOR COMPOSITE WALL FRAMING LIMITING HEIGHTS

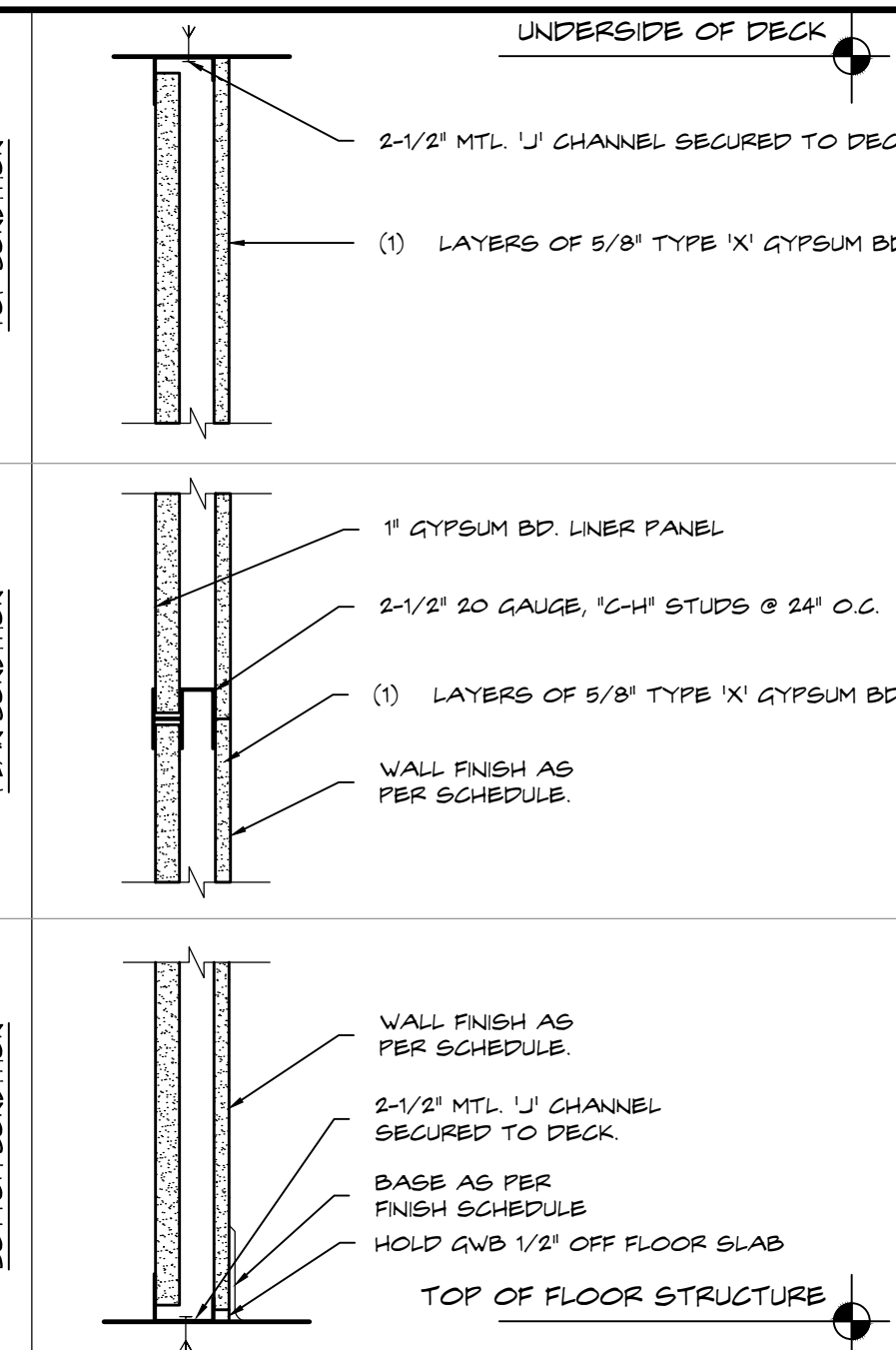
STUD DEPTH	STUD SPACING (N)	DESIGN LIMIT (PSF)	ALLOWABLE DEFLECTION	20 GAUGE (EQUIVALENT) FT.IN	
				COMPOSITE WALL - 5/8\"/>	
1 7/8"	16	5	L/240	11'-8"	7'-2"
2 1/4"	16	5	L/240	14'-4"	10'-1"
3 1/8"	16	5	L/240	16'-9"	13'-7"
4"	16	5	L/240	18'-4"	14'-7"
6"	16	5	L/240	24'-0"	NA

NOTES:
 1. LIMITING HEIGHTS APPLY TO THE FOLLOWING:
 - COMPOSITE WALLS CONSTRUCTED WITH A MINIMUM 5/8" THICKNESS OF GYPSUM BOARD AND WITH A MINIMUM OF ONE FULL-HEIGHT LAYER ON BOTH SIDES OF THE STUD FRAMING.
 - NON-COMPOSITE WALLS CONSTRUCTED WITH A MINIMUM 5/8" THICKNESS OF GYPSUM WALL BOARD ON EACH SIDE TO 6' ABOVE THE CEILING OR ON ONLY ONE SIDE OF STUDS.
 2. LIMITING HEIGHTS ARE BASED ON TESTS CONDUCTED WITH GYPSUM BOARD ATTACHED WITH SCREWS SPACED 16" O.C. TO FRAMING MEMBERS SPACED 16" O.C. USING MINIMUM NO. 6 TYPE 5 DRYWALL SCREWS.
 3. THIS LIMITING HEIGHT DATA IS BASED ON CLARK DEFRICH LIMITING HEIGHTS TABLES. SS&P PRESENTS THIS INFORMATION ONLY AS REFERENCE, AND WILL NOT BE RESPONSIBLE FOR THE PERFORMANCE OF WALLS BASED ON THIS TABLE. CONSULT CURRENT INFORMATION FROM ASTM C754 AND SEMA AND THE STUD MANUFACTURERS FOR LIMITING HEIGHT CHARACTERISTICS OF THEIR PARTICULAR PRODUCT, WHERE MANUFACTURERS' RECOMMENDATIONS OR LOCAL ORDINANCES ARE MORE RESTRICTIVE, THEY SHALL APPLY.
 4. CONTRACTOR TO SUBMIT PRODUCT APPROVAL AND MANUFACTURER'S SPECIFICATIONS TO ARCHITECT.
 5. ALL STUD WALLS AND PARTITIONS SHALL HAVE CONTINUOUS LINES OF BRIDGING SPACED AT 4'-0" MAX ON CENTER. THE BRIDGING SHALL BE SECURELY FASTENED TO THE STUDS WITH EITHER SCREWS OR WELDS.
 6. ALL STUDS SHALL BE 126E1 STUDS WITH FLANGE STIFFENERS AND 20 GAUGE EQUIVALENT.

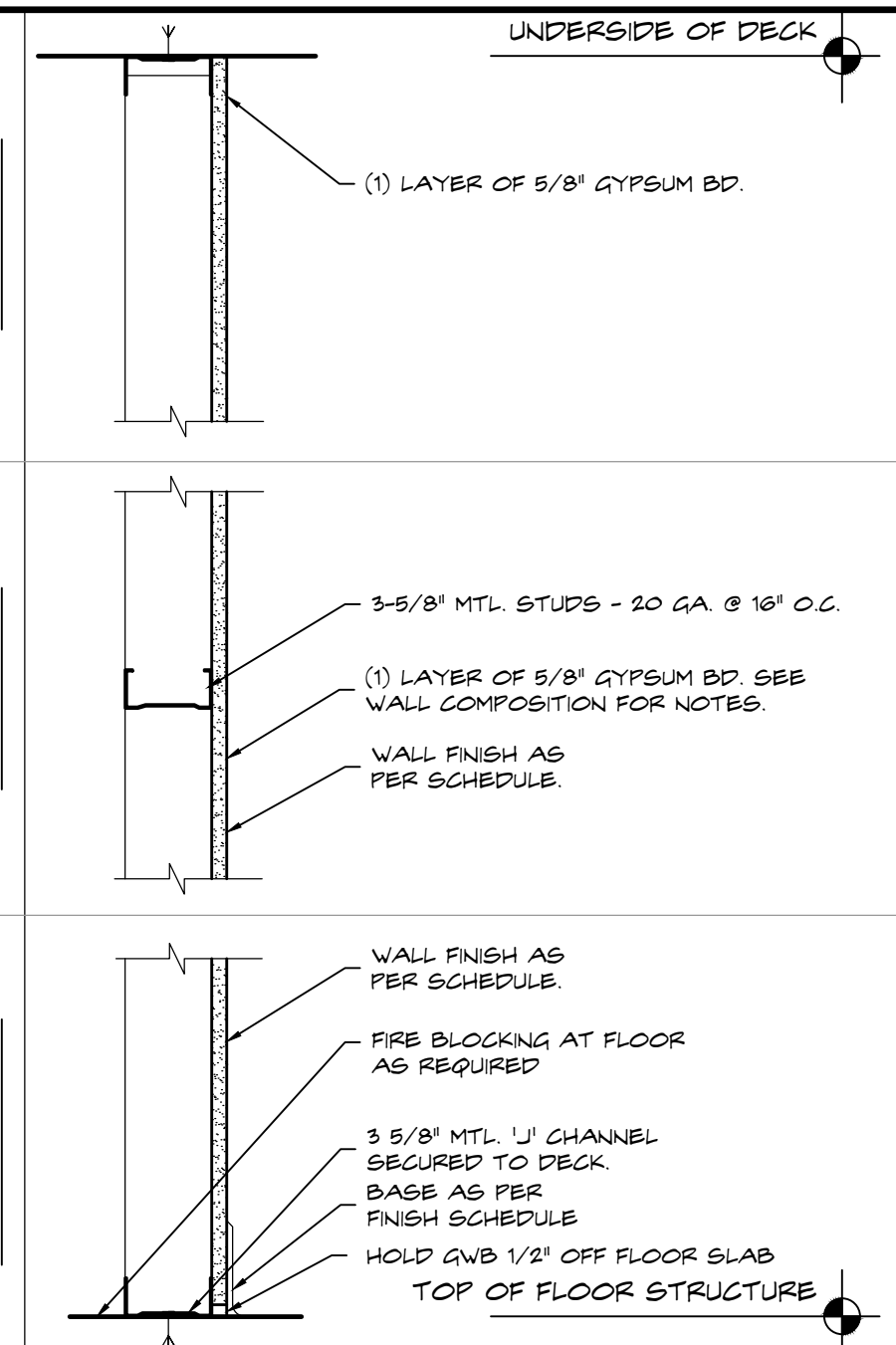
1 FRAMING LIMITATIONS
SCALE: N.T.S.



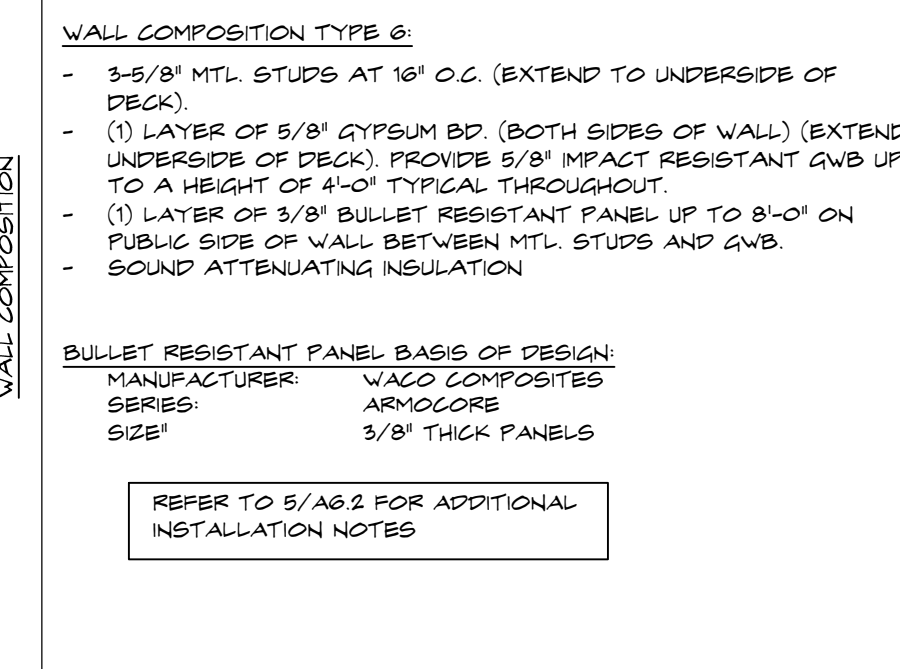
6 INTERIOR NON-BEARING BULLET PROOF



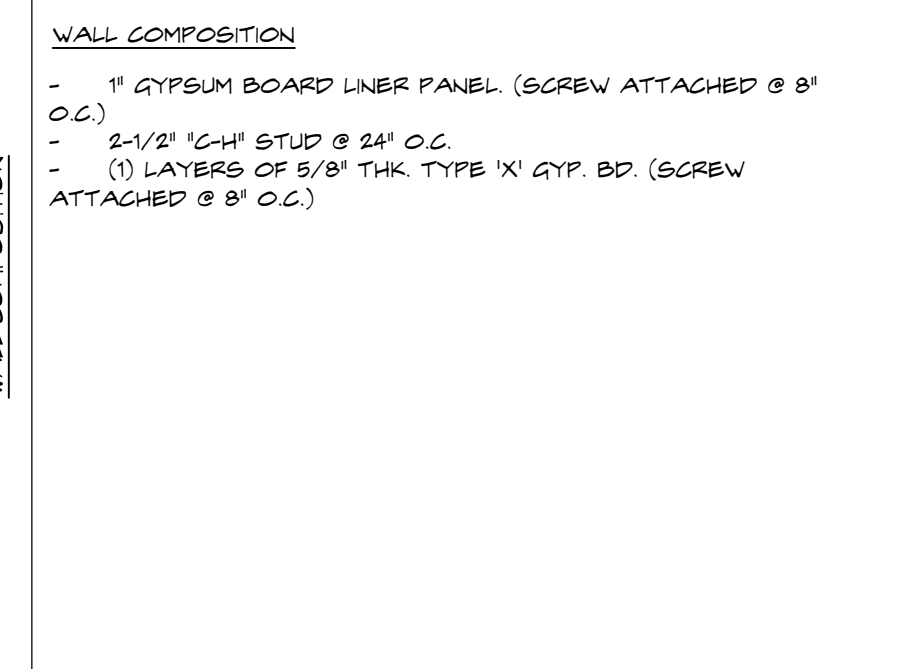
5 INTERIOR BEARING



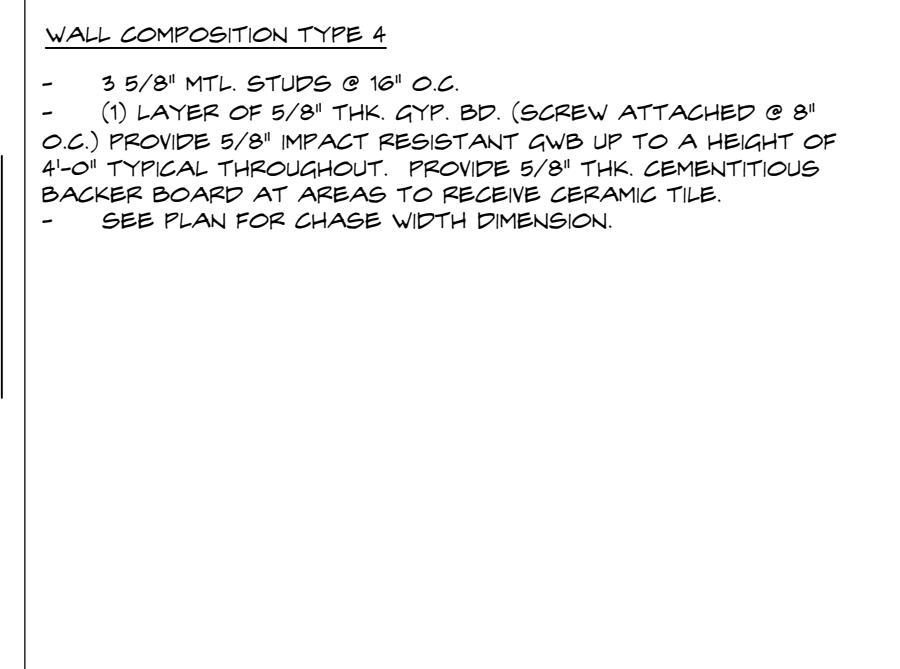
4 INTERIOR BEARING



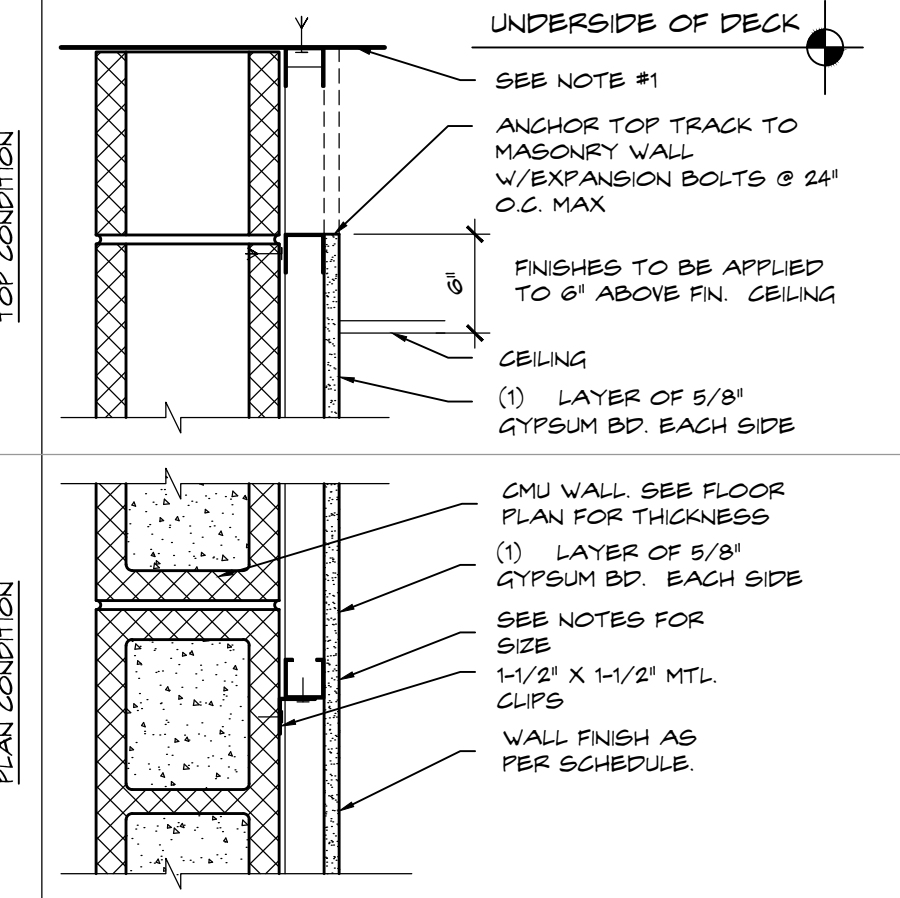
6 INTERIOR NON-BEARING BULLET PROOF



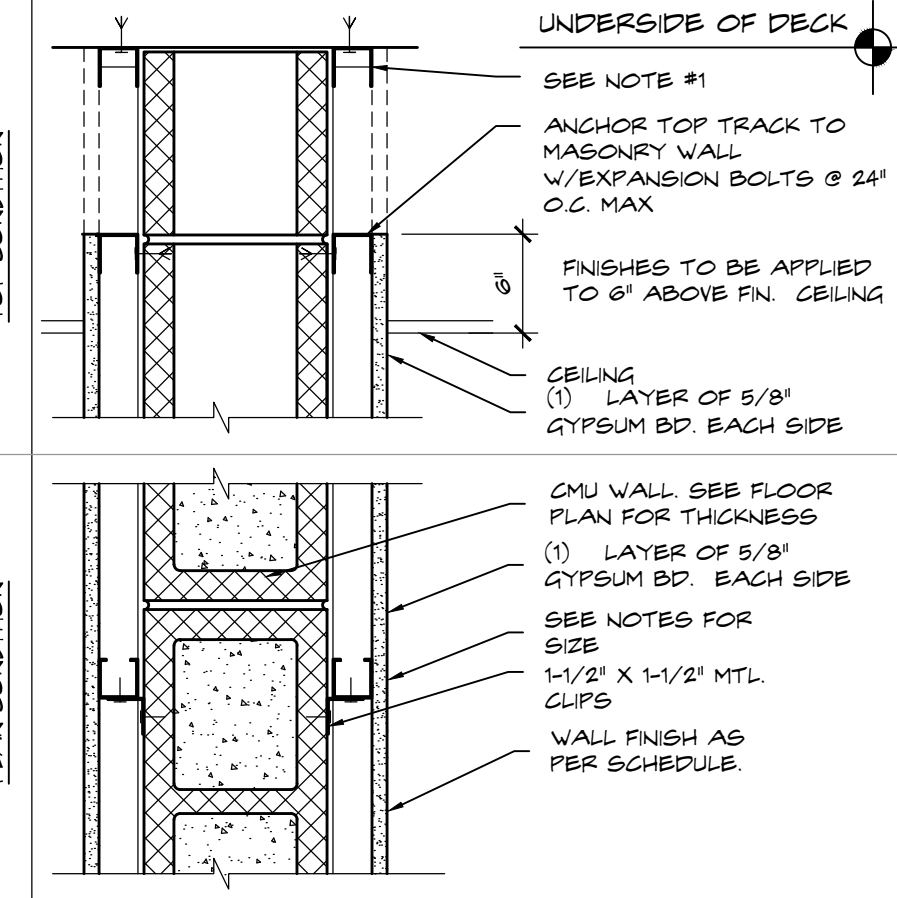
5 INTERIOR BEARING



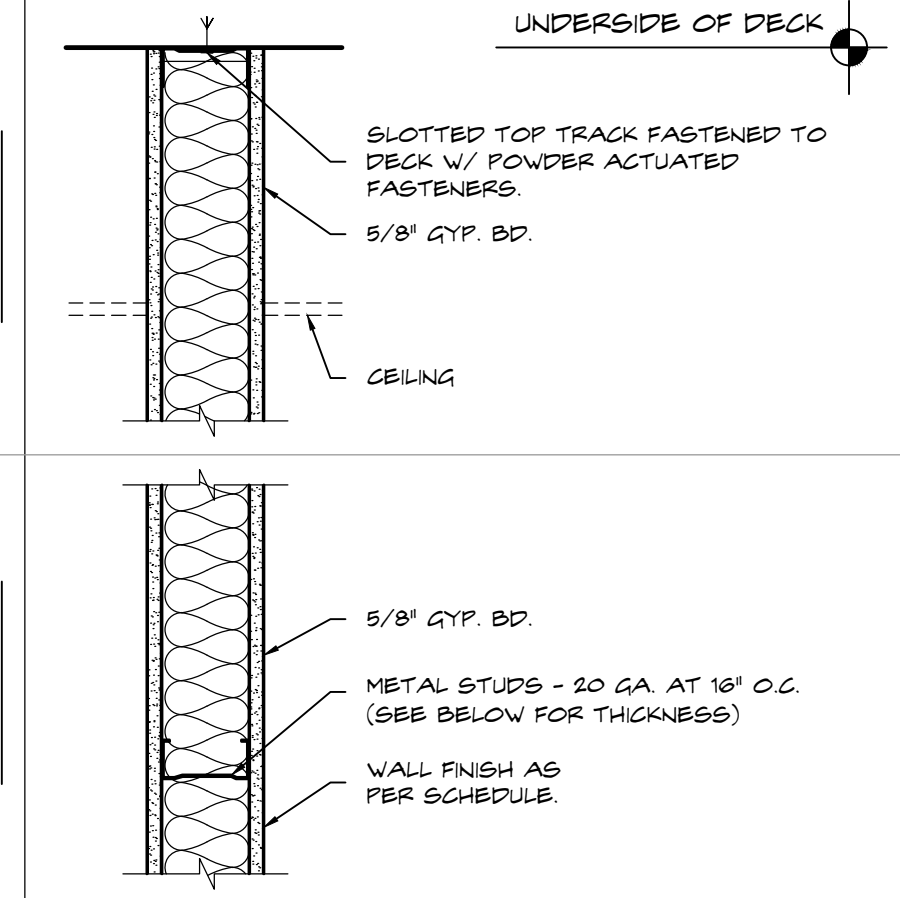
4 INTERIOR BEARING



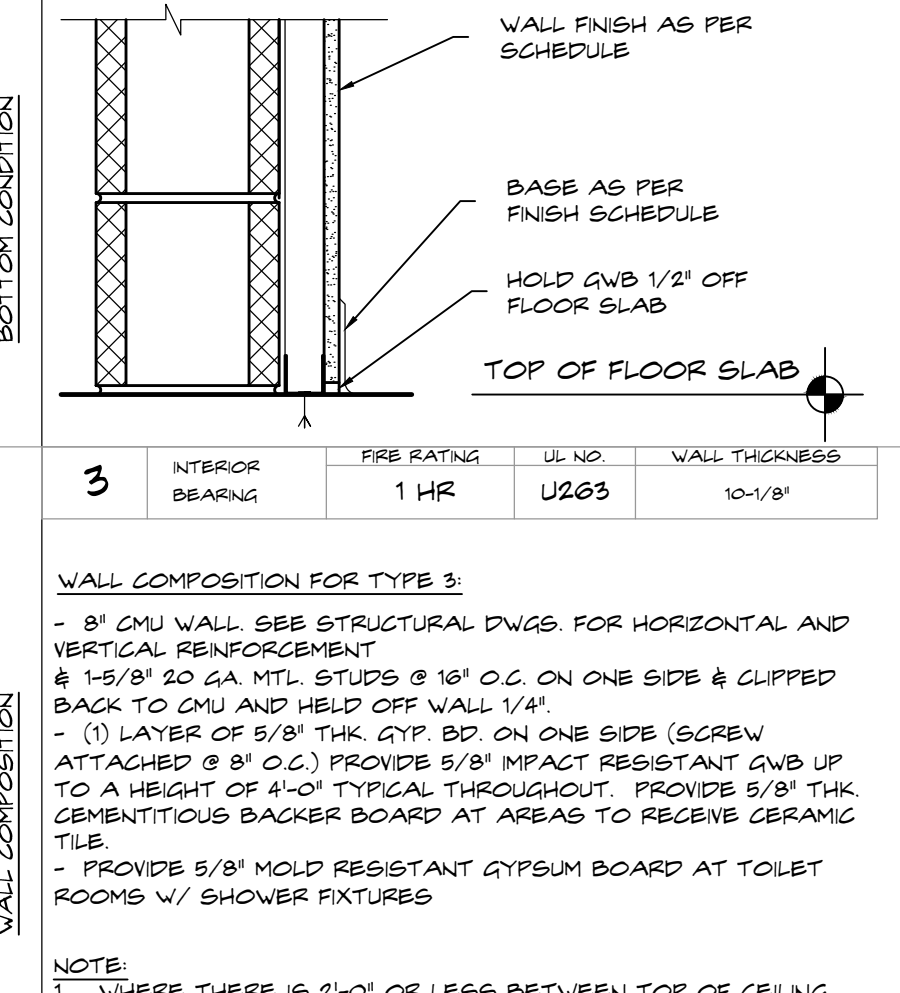
3 INTERIOR BEARING



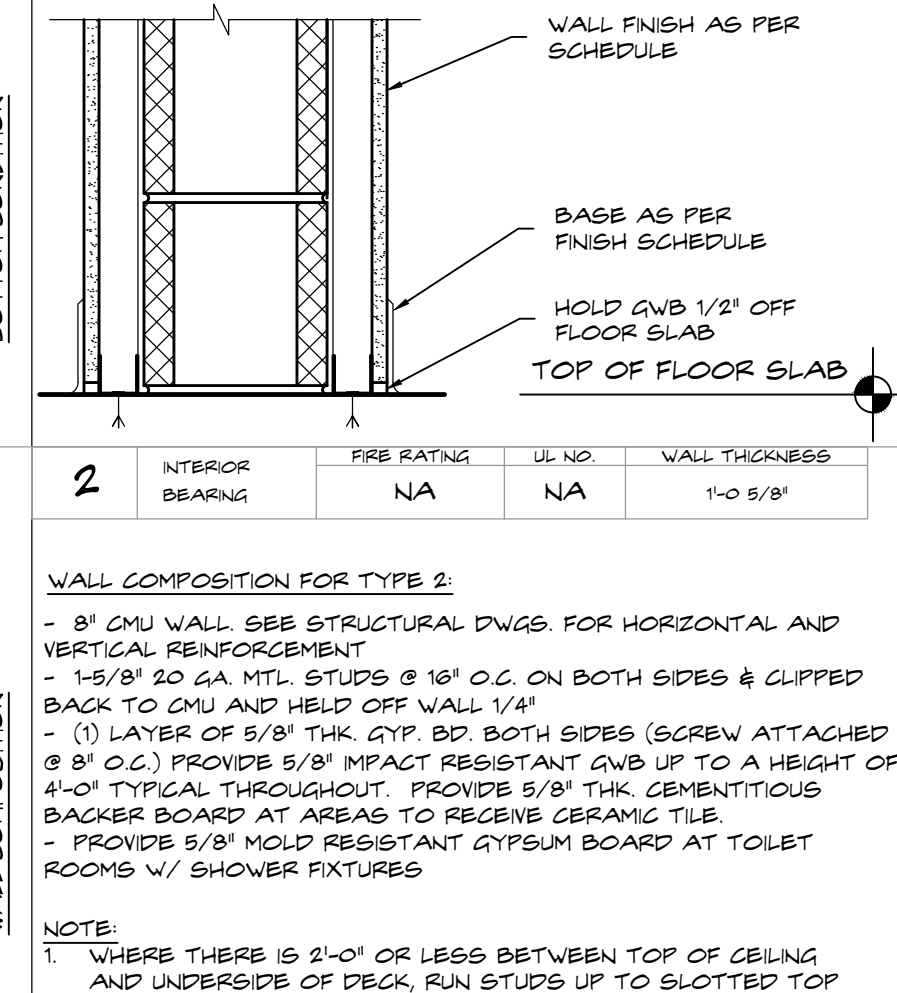
2 INTERIOR BEARING



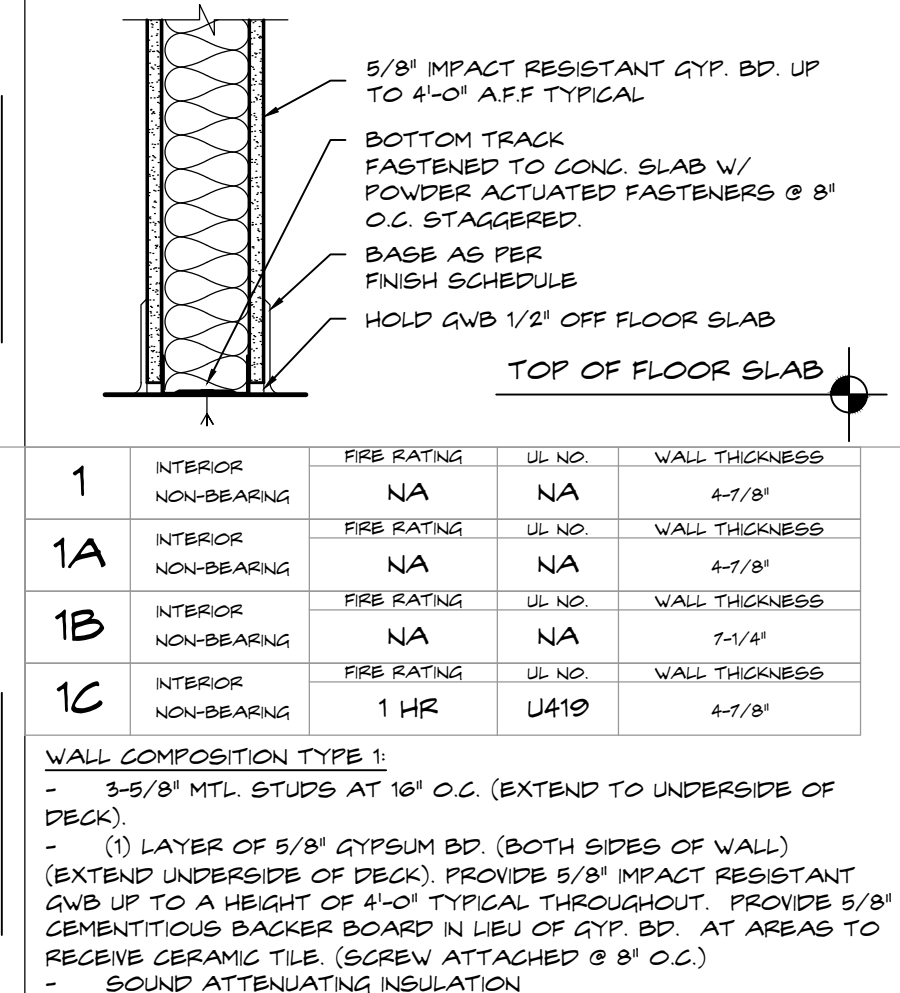
1 INTERIOR BEARING



3 INTERIOR BEARING



2 INTERIOR BEARING



1 INTERIOR BEARING

THESE DRAWINGS ARE FOR THE EXCLUSIVE USE OF GLIDDEN SPINA + PARTNERS, INC. AND MAY NOT BE DUPLICATED, REPRODUCED OR USED IN ANY MANNER WITHOUT THE EXPRESS WRITTEN CONSENT OF GLIDDEN SPINA + PARTNERS, INC. ALL RIGHTS RESERVED.

Revisions:

Project no:	14224
Date:	09.09.16
Drawn by:	WS
Project Architect:	WC / DR