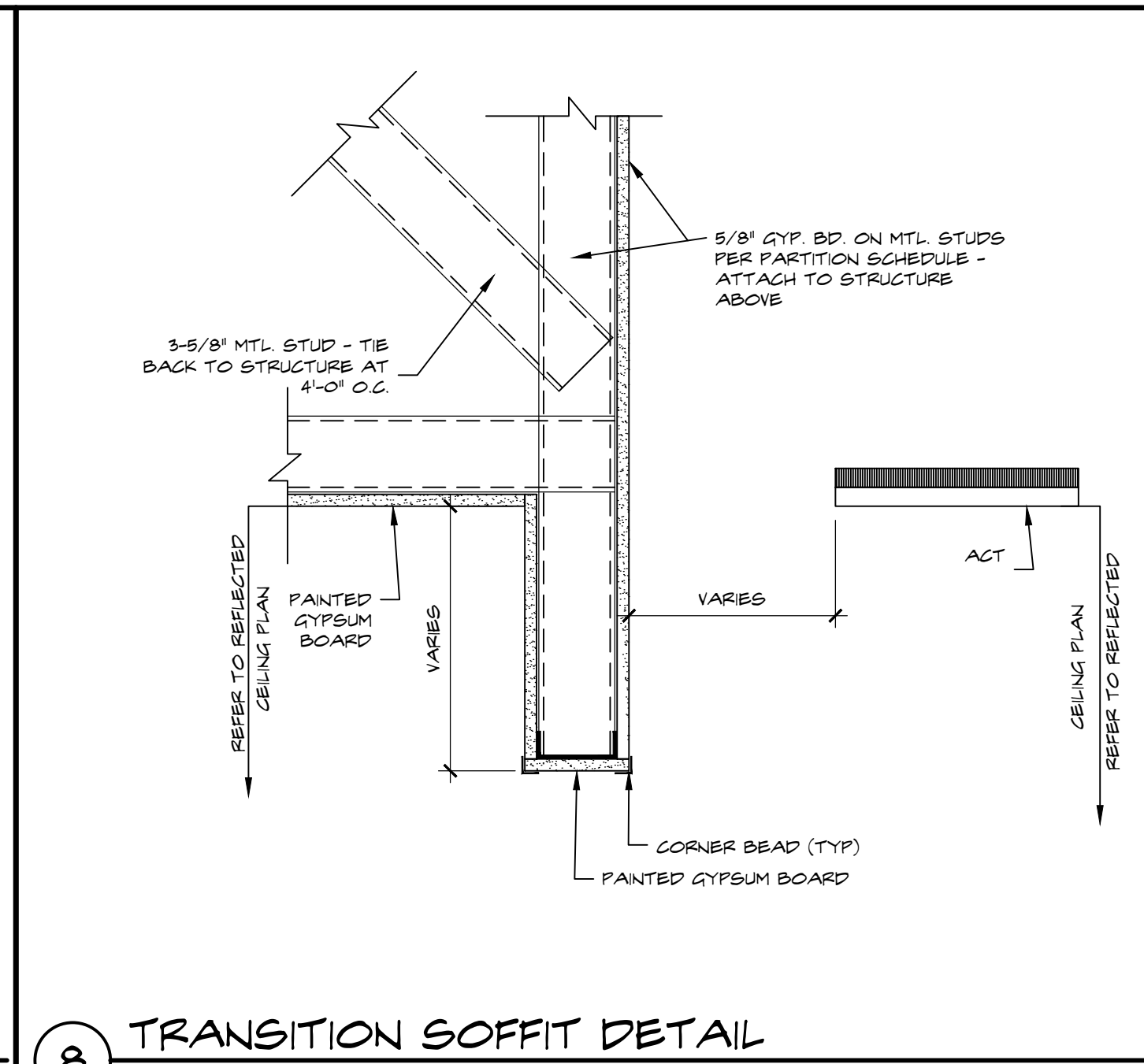
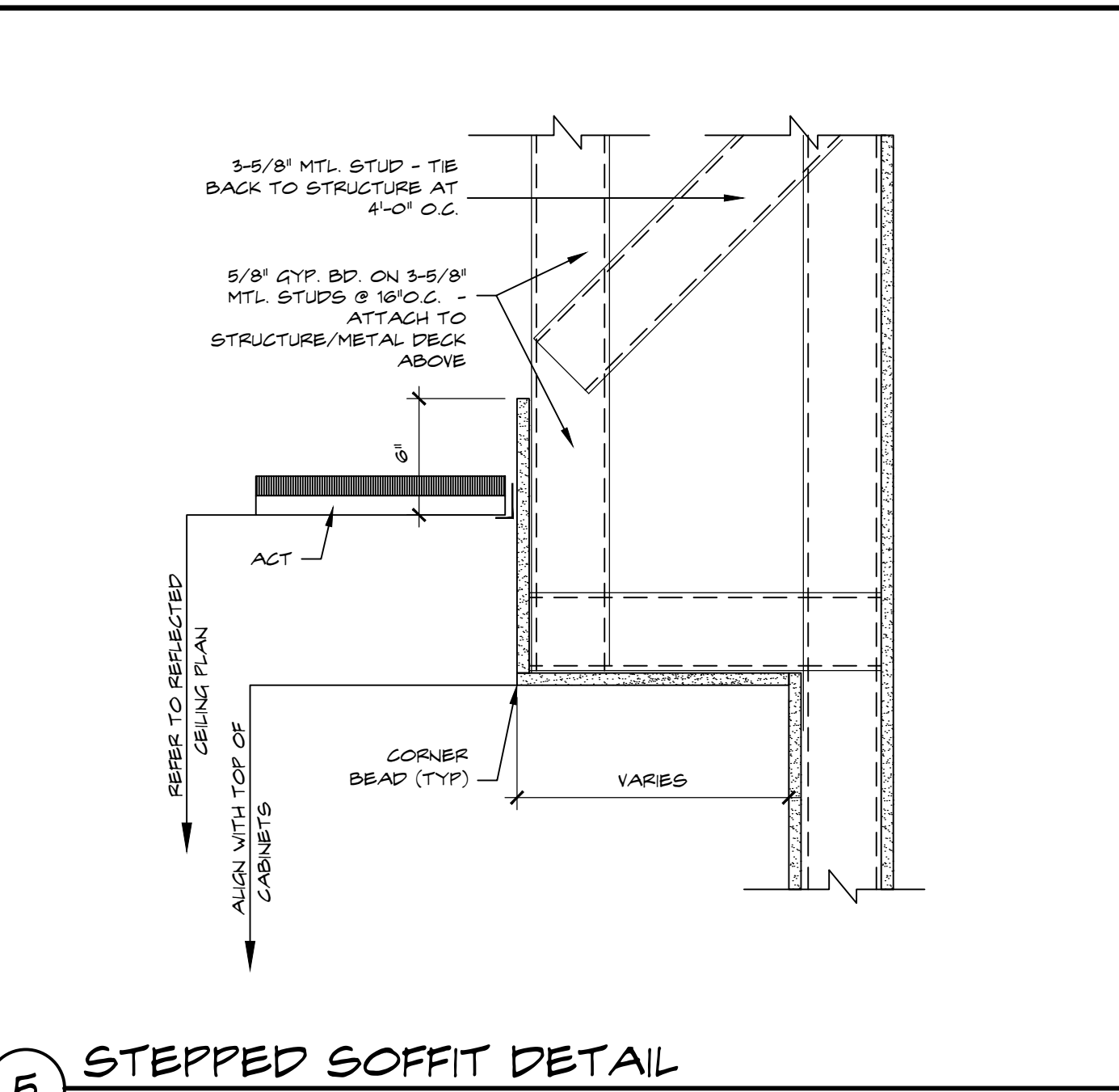


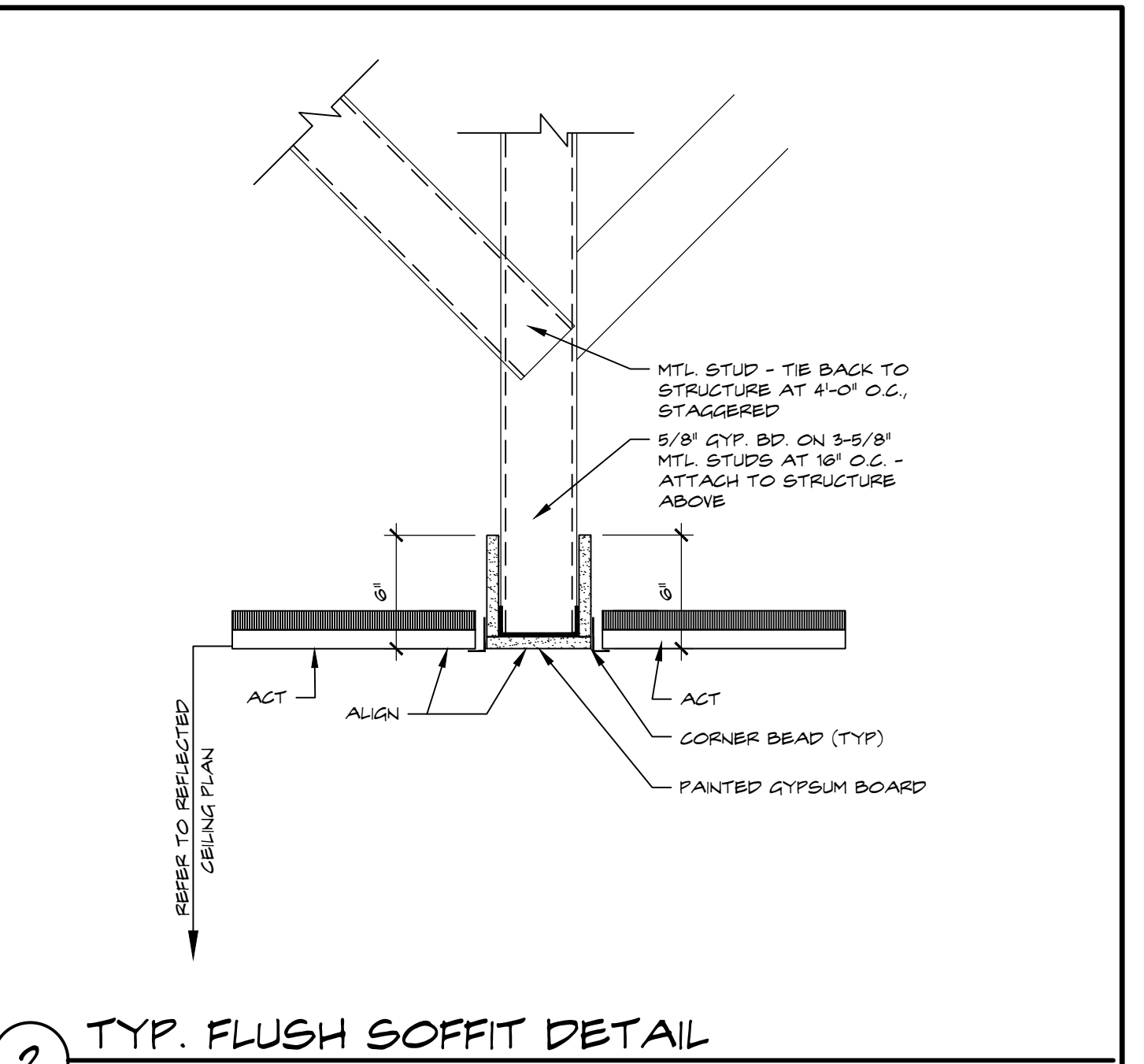
11 SHADE POCKET DETAIL - GWB  
SCALE: 1-1/2" = 1'-0"



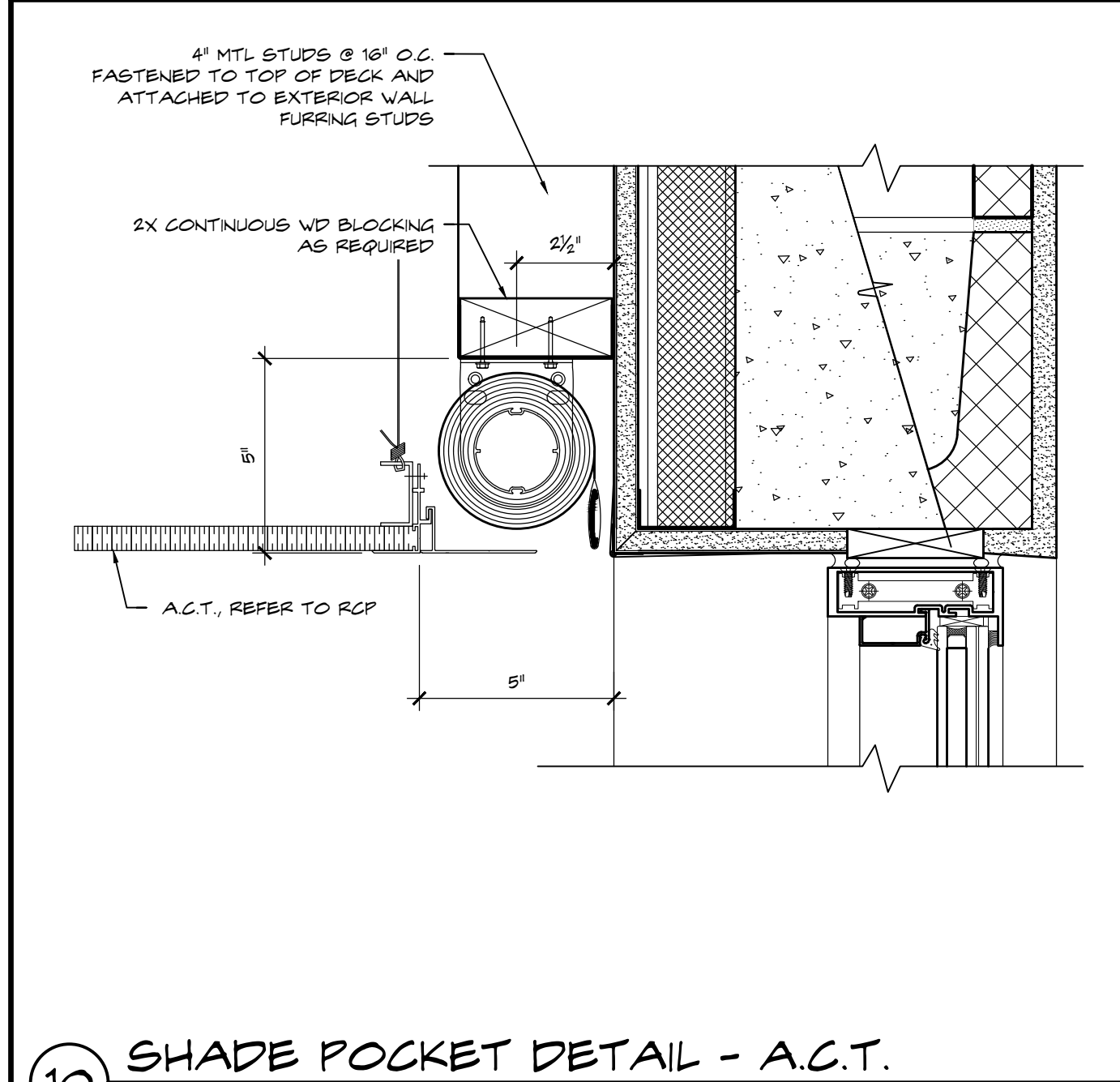
8 TRANSITION SOFFIT DETAIL  
SCALE: 1-1/2" = 1'-0"



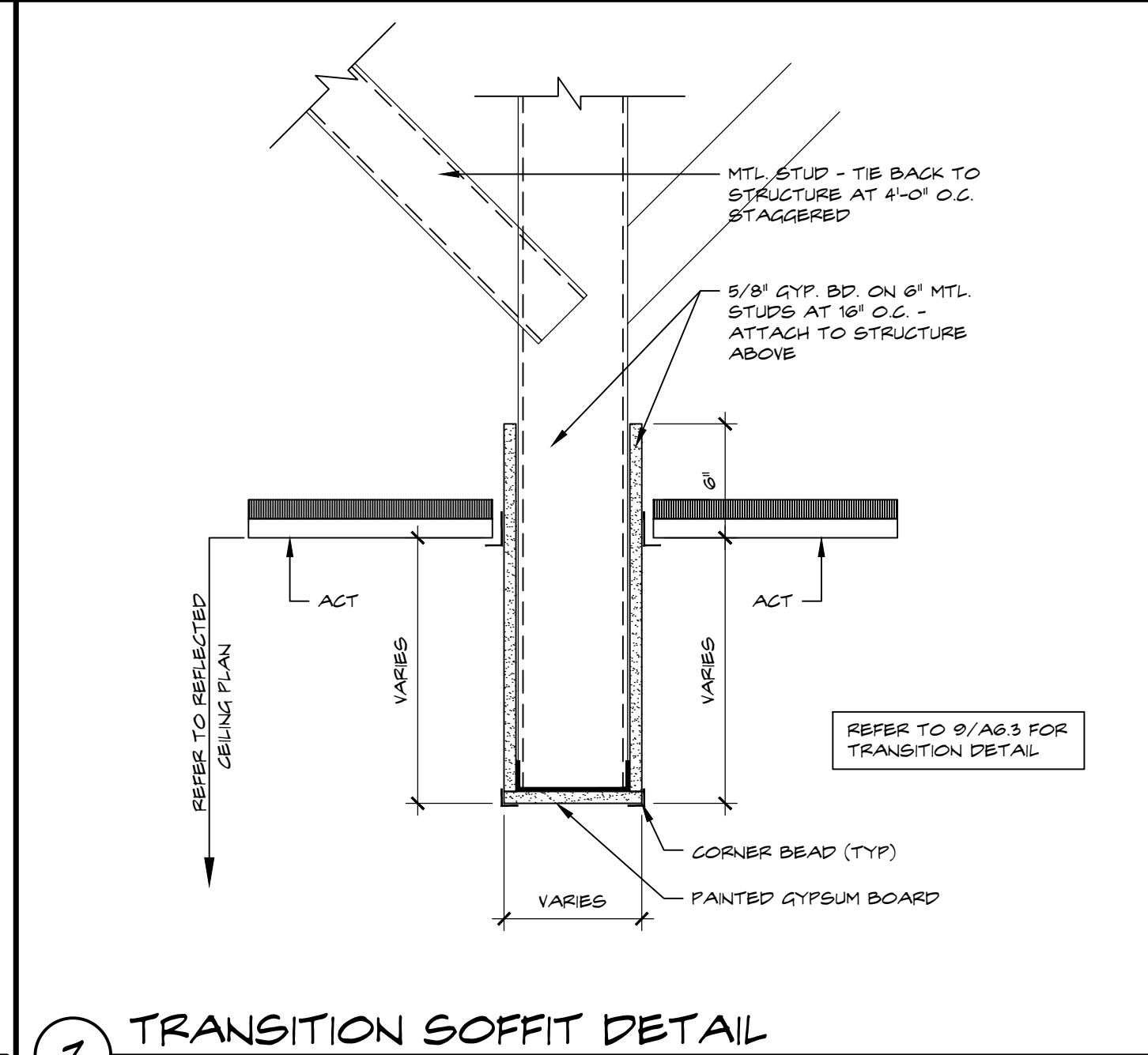
5 STEPPED SOFFIT DETAIL  
SCALE: 1-1/2" = 1'-0"



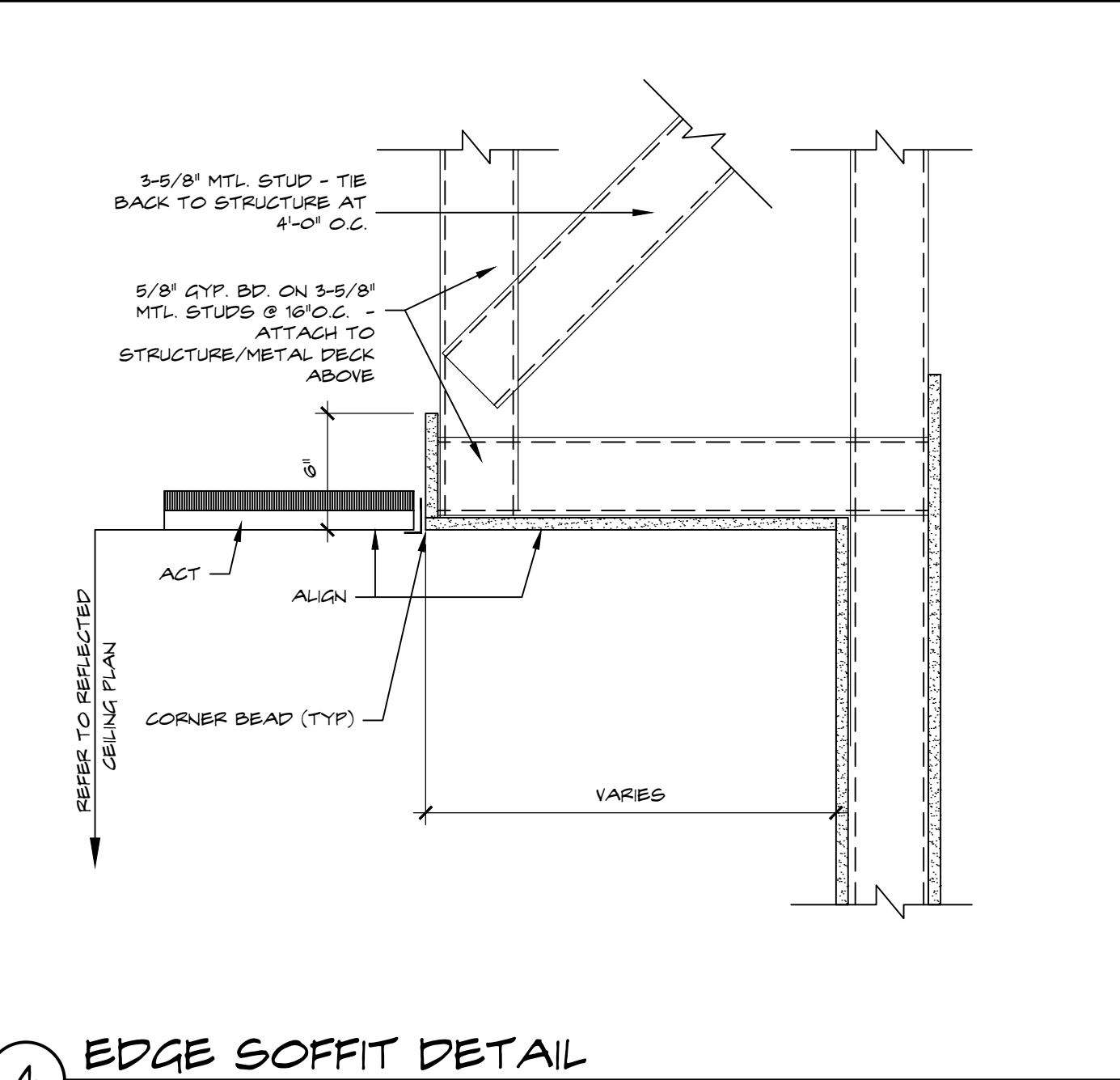
2 TYP. FLUSH SOFFIT DETAIL  
SCALE: 1-1/2" = 1'-0"



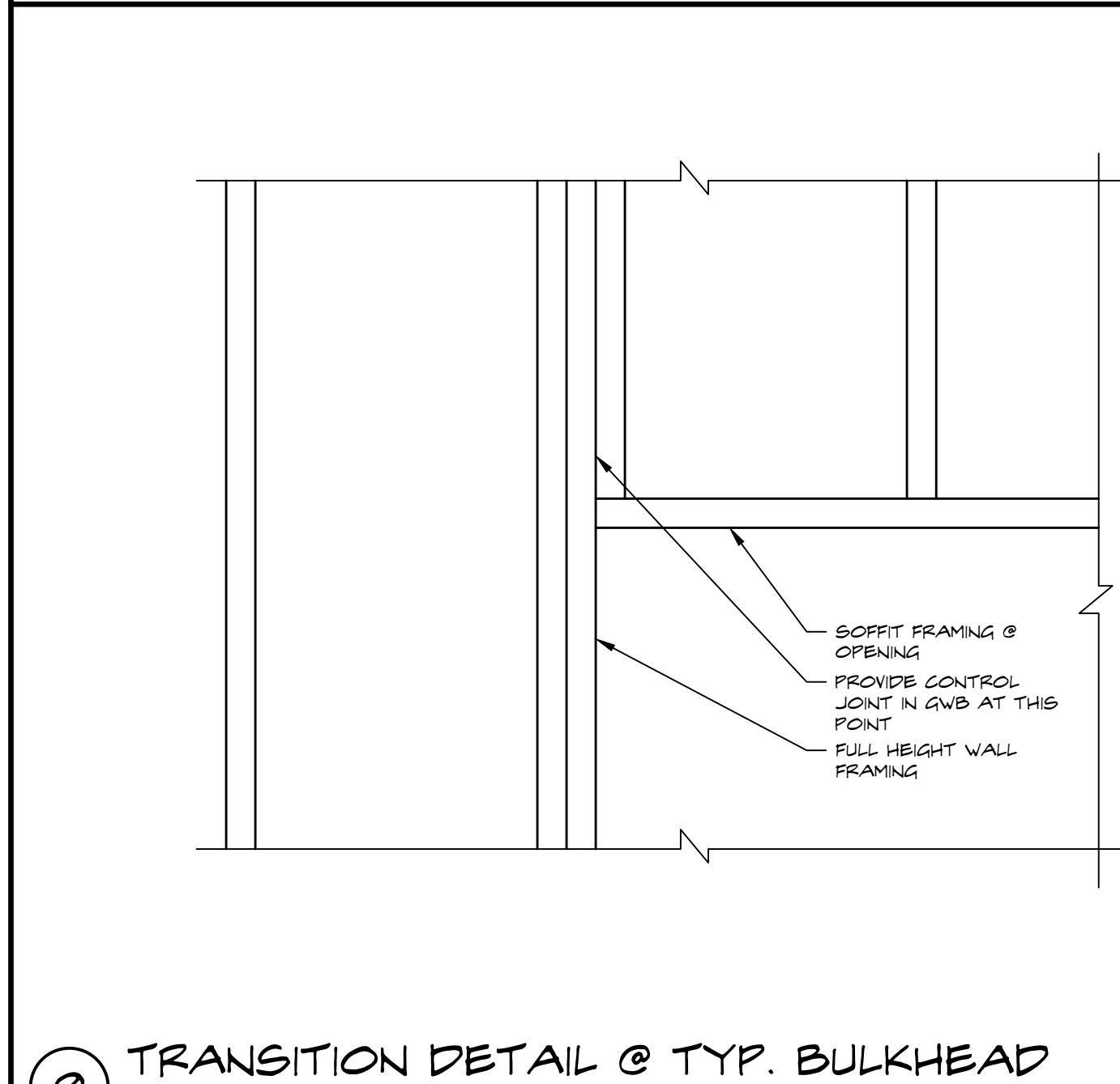
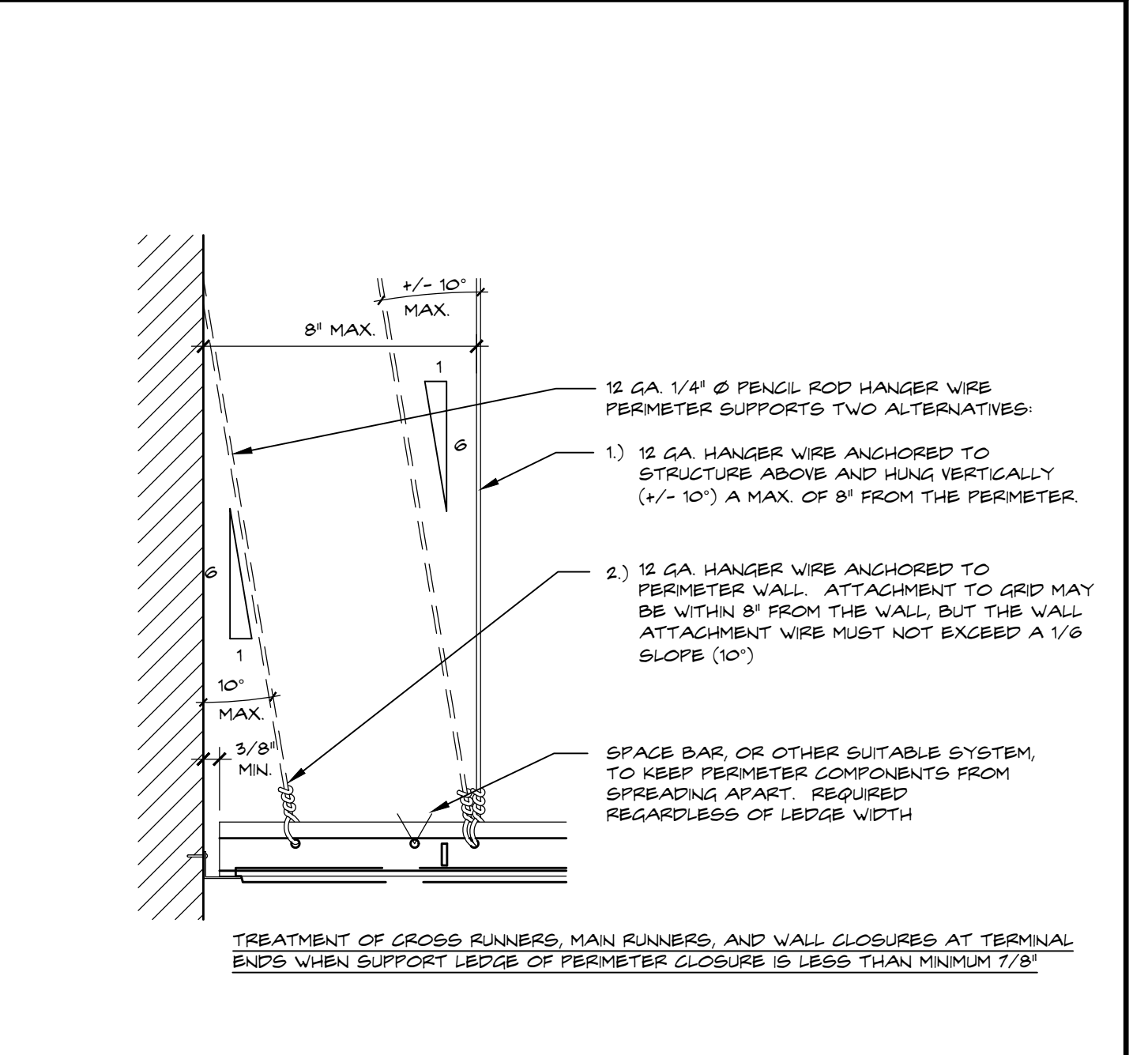
10 SHADE POCKET DETAIL - A.C.T.  
SCALE: 1-1/2" = 1'-0"



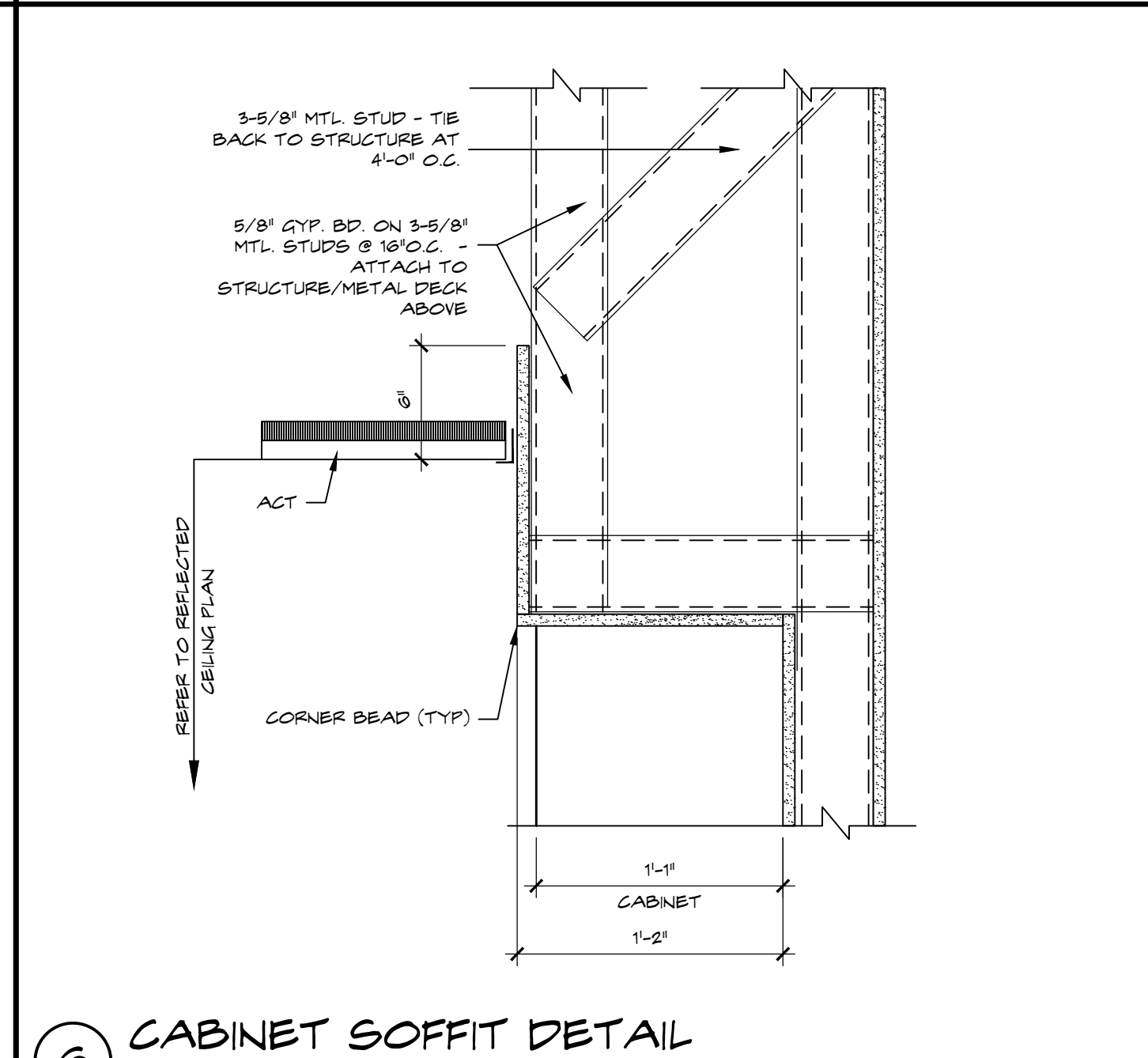
7 TRANSITION SOFFIT DETAIL  
SCALE: 1-1/2" = 1'-0"



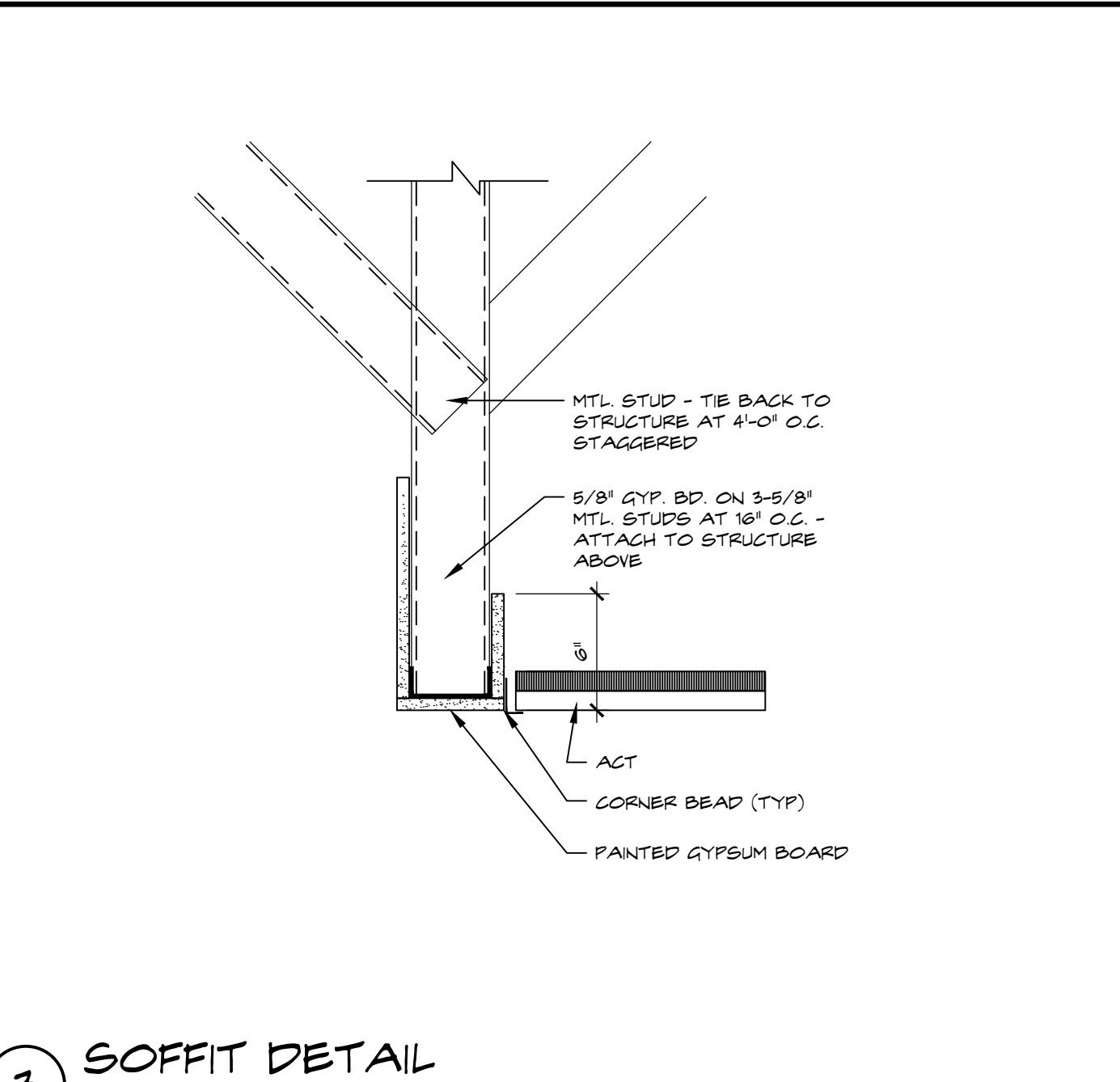
4 EDGE SOFFIT DETAIL  
SCALE: 1-1/2" = 1'-0"



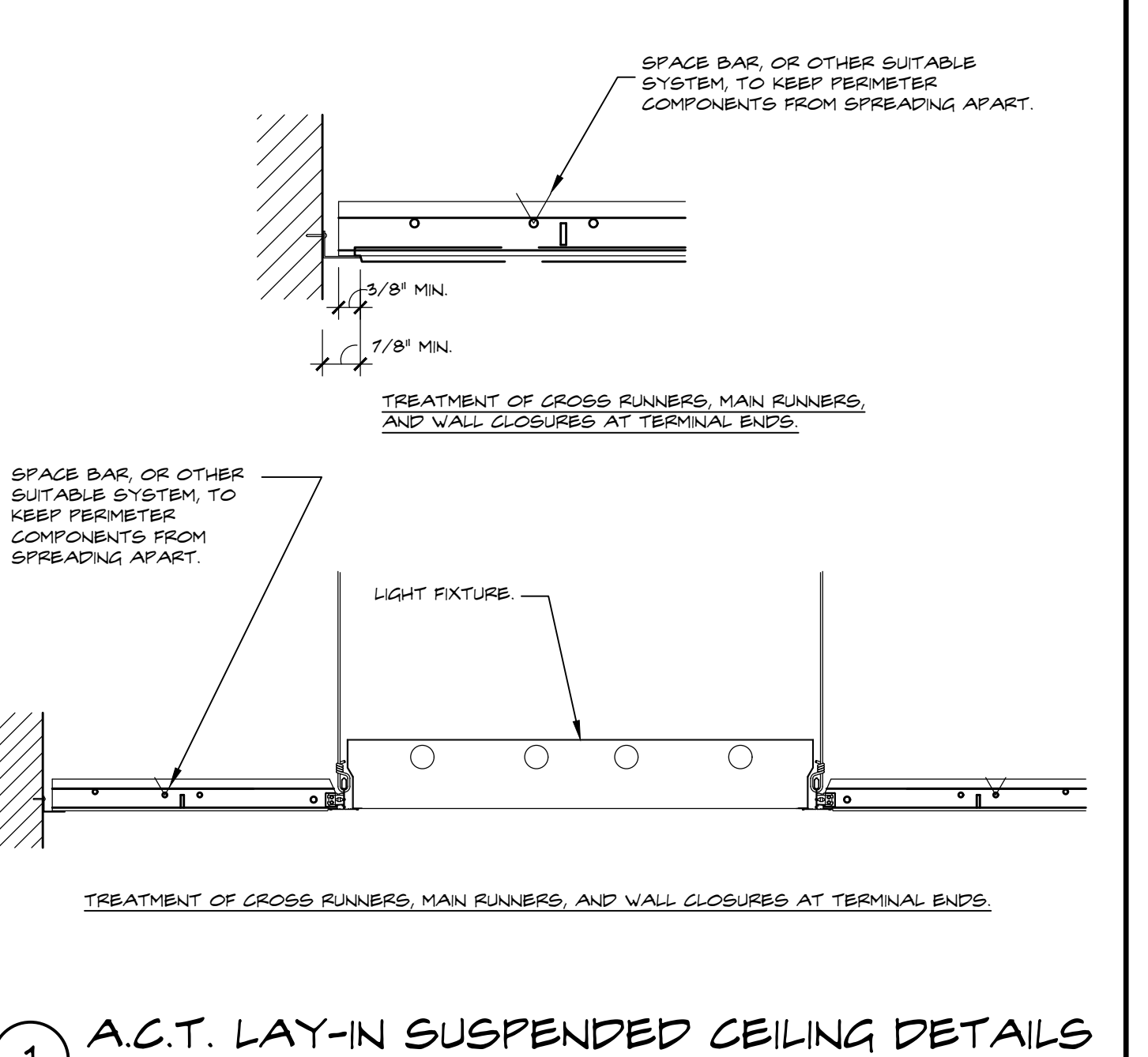
9 TRANSITION DETAIL @ TYP. BULKHEAD  
SCALE: 1-1/2" = 1'-0"



6 CABINET SOFFIT DETAIL  
SCALE: 1-1/2" = 1'-0"



3 SOFFIT DETAIL  
SCALE: 1-1/2" = 1'-0"



1 A.C.T. LAY-IN SUSPENDED CEILING DETAILS  
SCALE: 3/4" = 1'-0"

THESE DRAWINGS ARE FOR THE EXCLUSIVE USE OF GLIDDEN SPINA + PARTNERS, INC. AND MAY NOT BE DUPLICATED, REPRODUCED OR USED IN ANY MANNER WITHOUT THE EXPRESS WRITTEN CONSENT OF GLIDDEN SPINA + PARTNERS, INC. ALL RIGHTS RESERVED.

Revisions:	

Project no: 14224  
Date: 09.09.16  
Drawn by: WS  
Project Architect: WC / DR