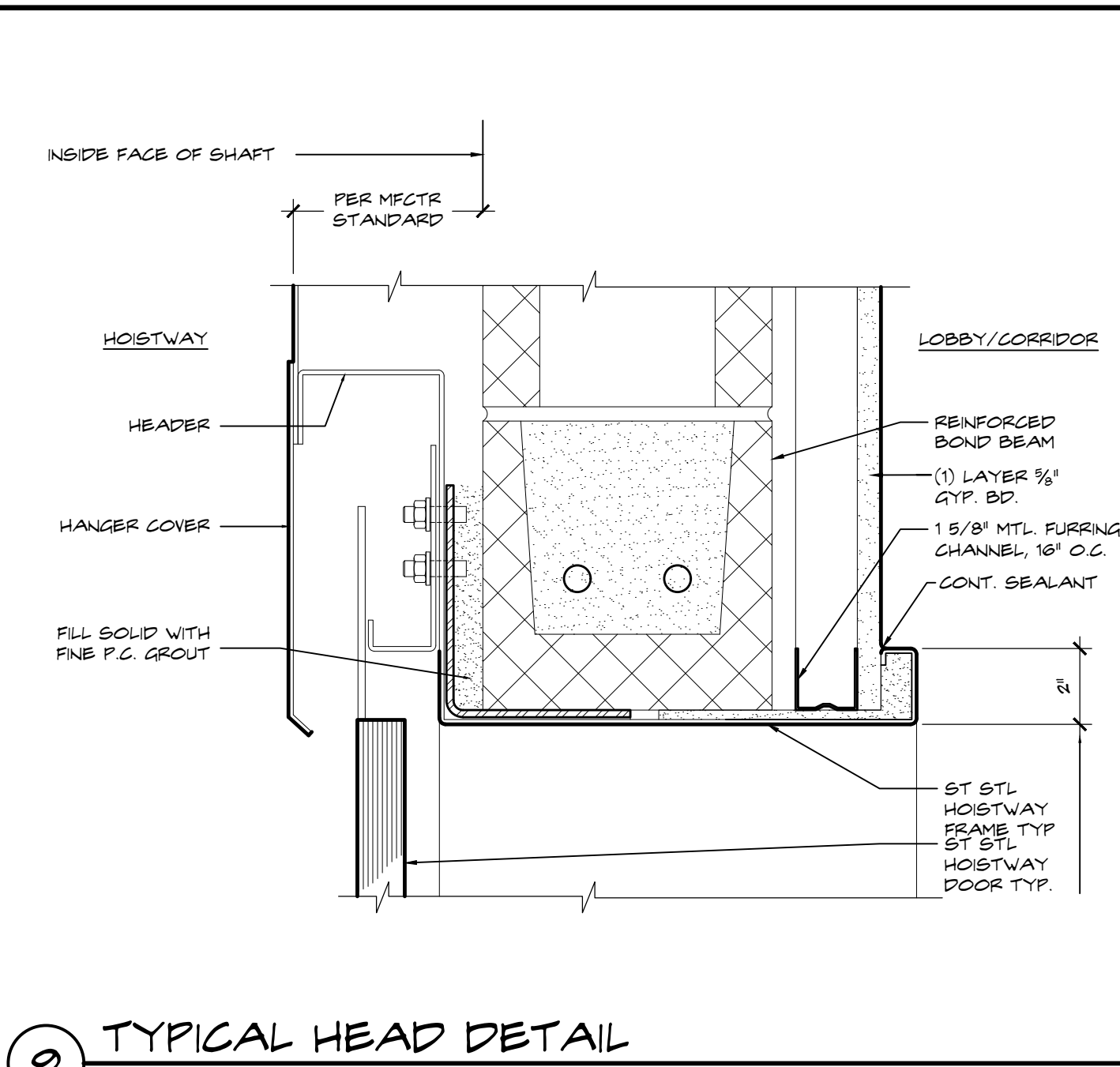
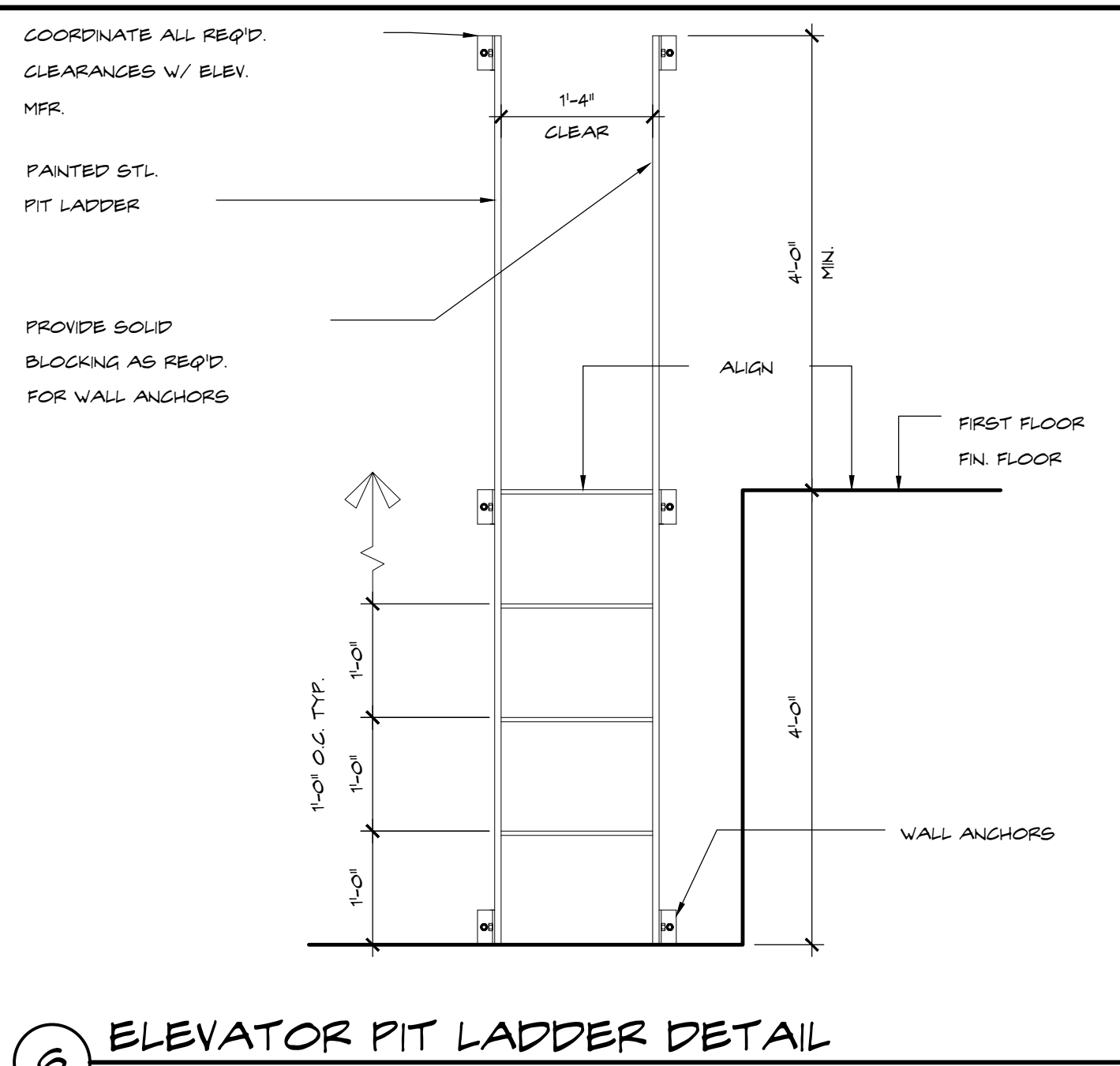


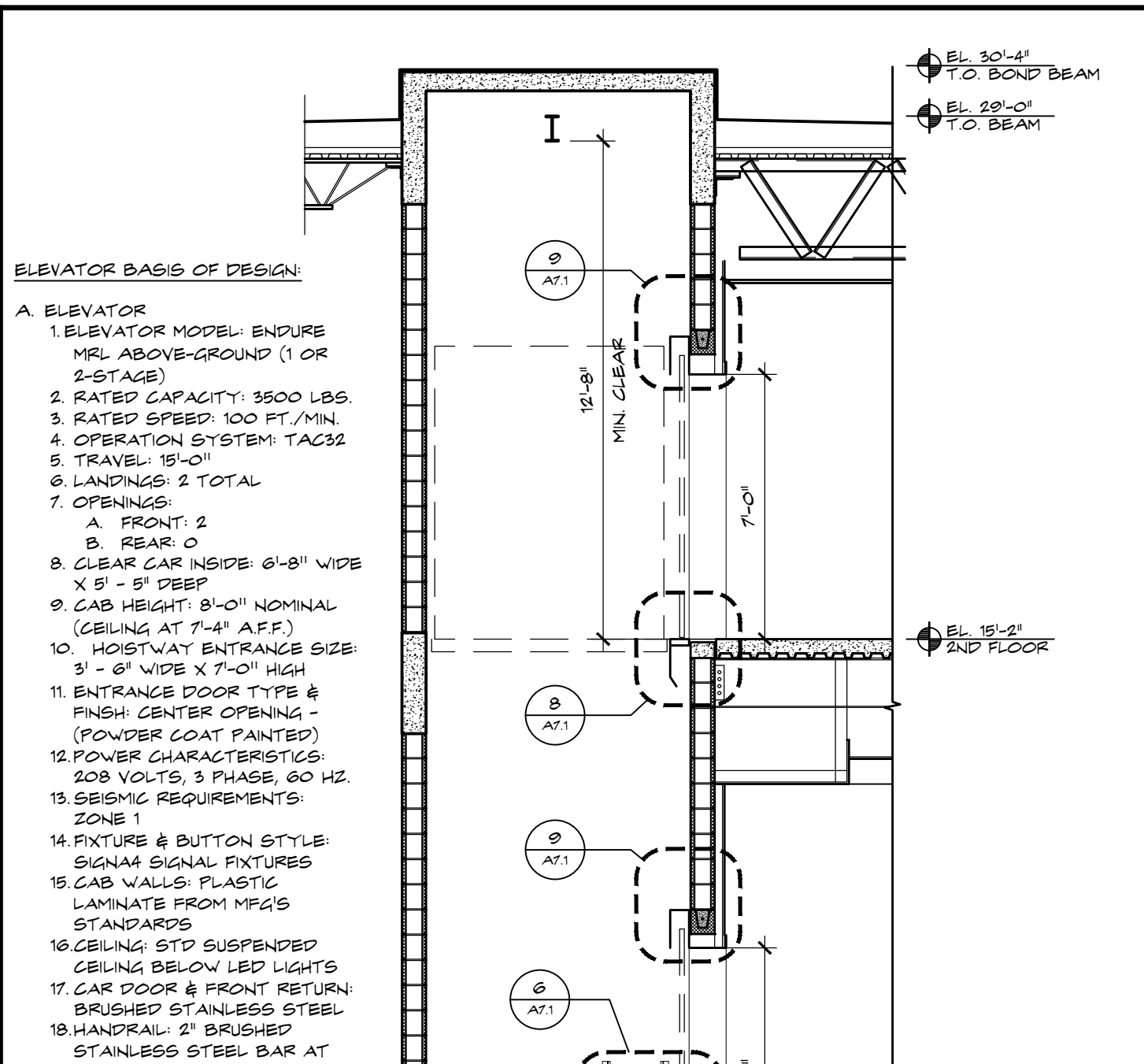
12 JAMB DETAIL AT 2ND FLOOR
SCALE: 3/4" = 1'-0"



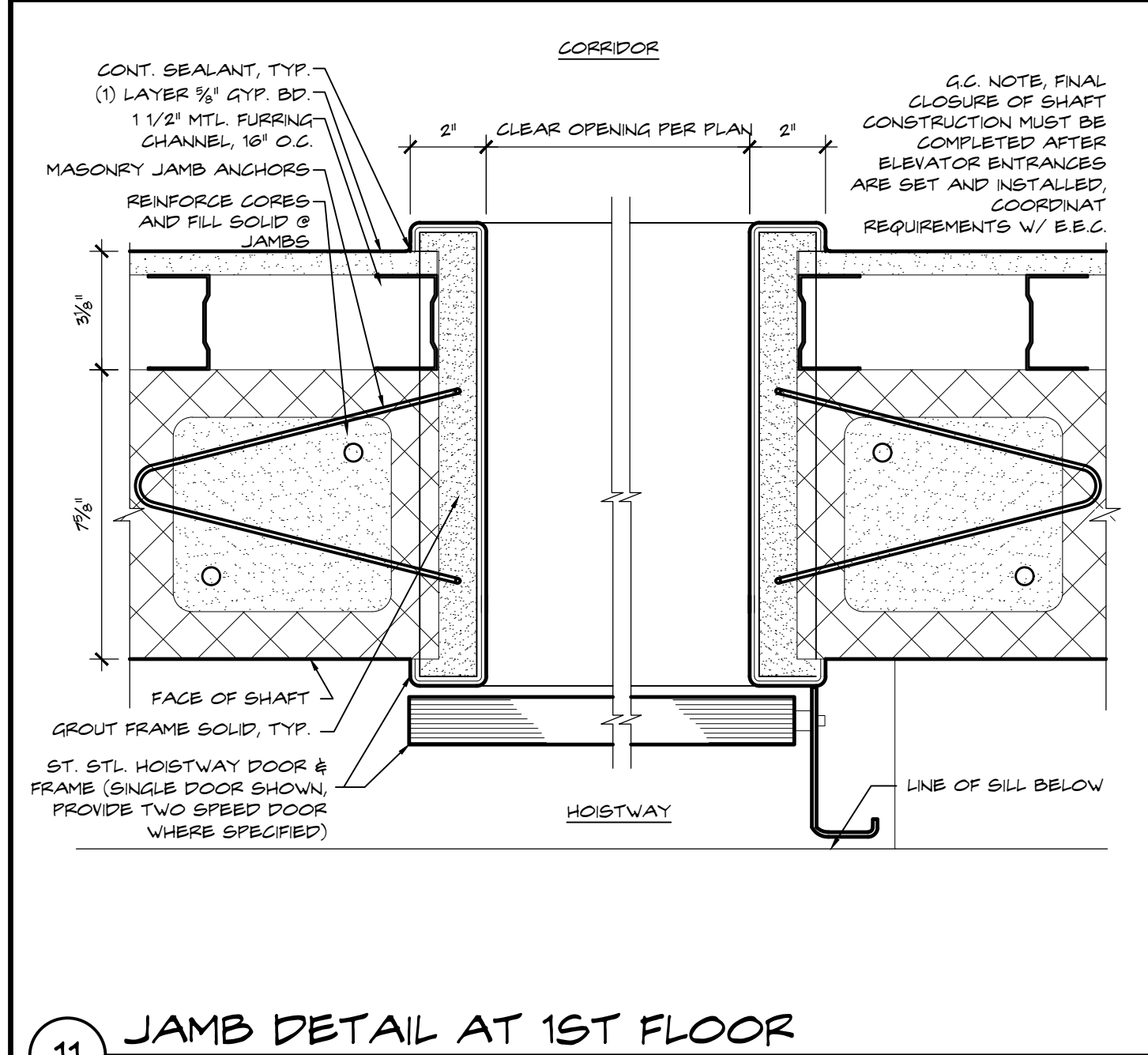
9 TYPICAL HEAD DETAIL
SCALE: 3/4" = 1'-0"



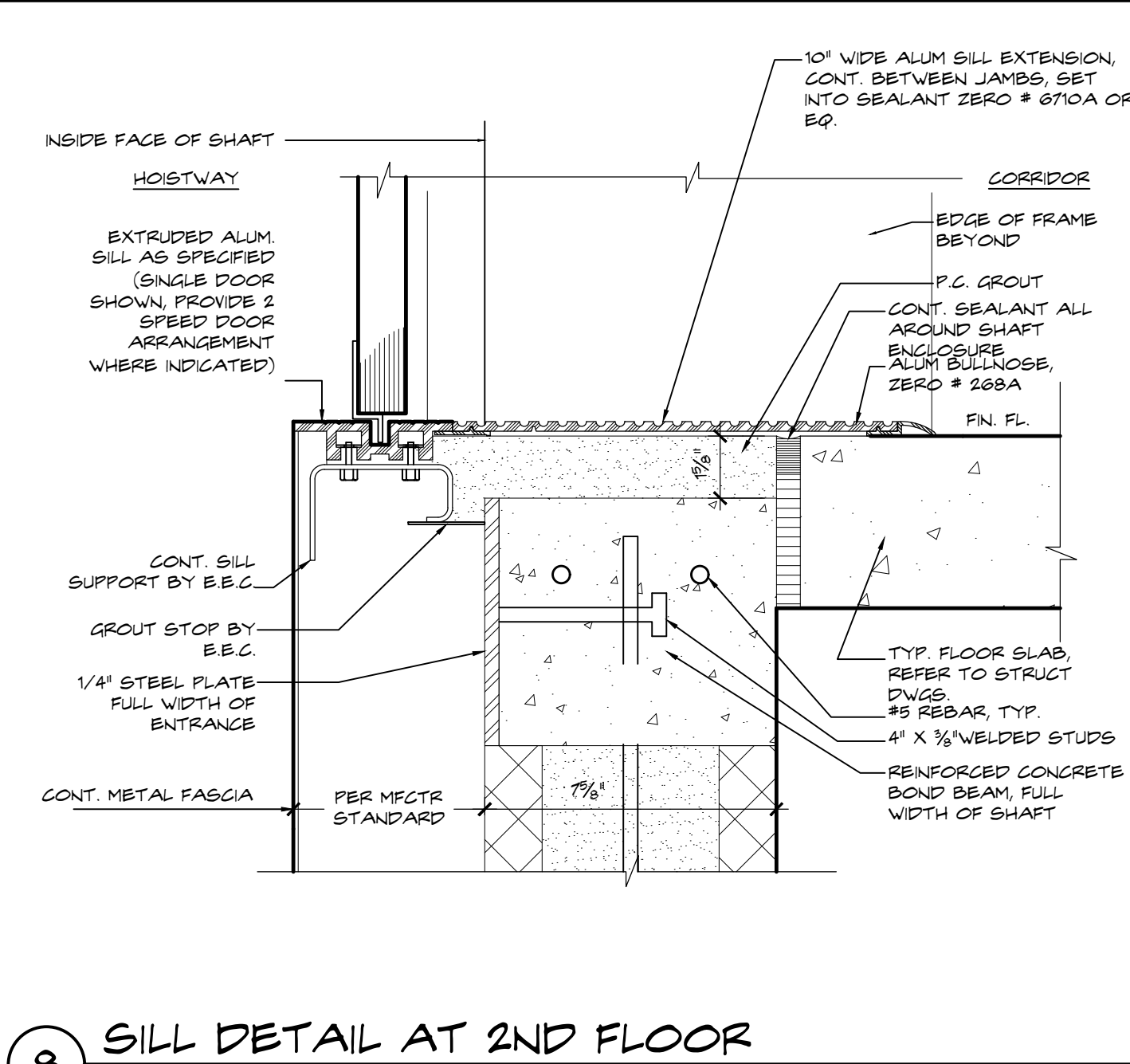
6 ELEVATOR PIT LADDER DETAIL
SCALE: 3/4" = 1'-0"



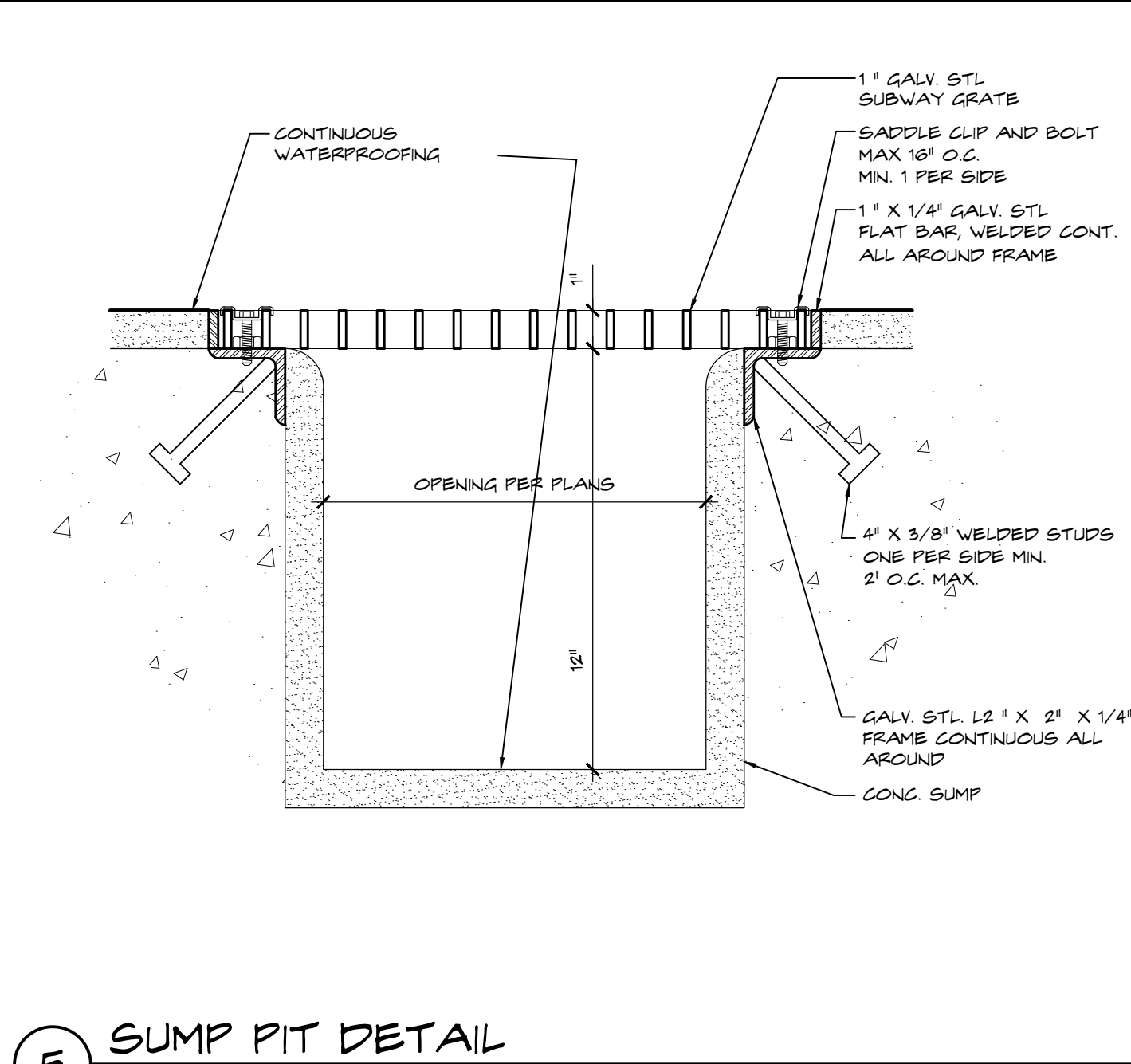
3 ELEVATOR - HOISTWAY SECTION
SCALE: 1/4" = 1'-0"



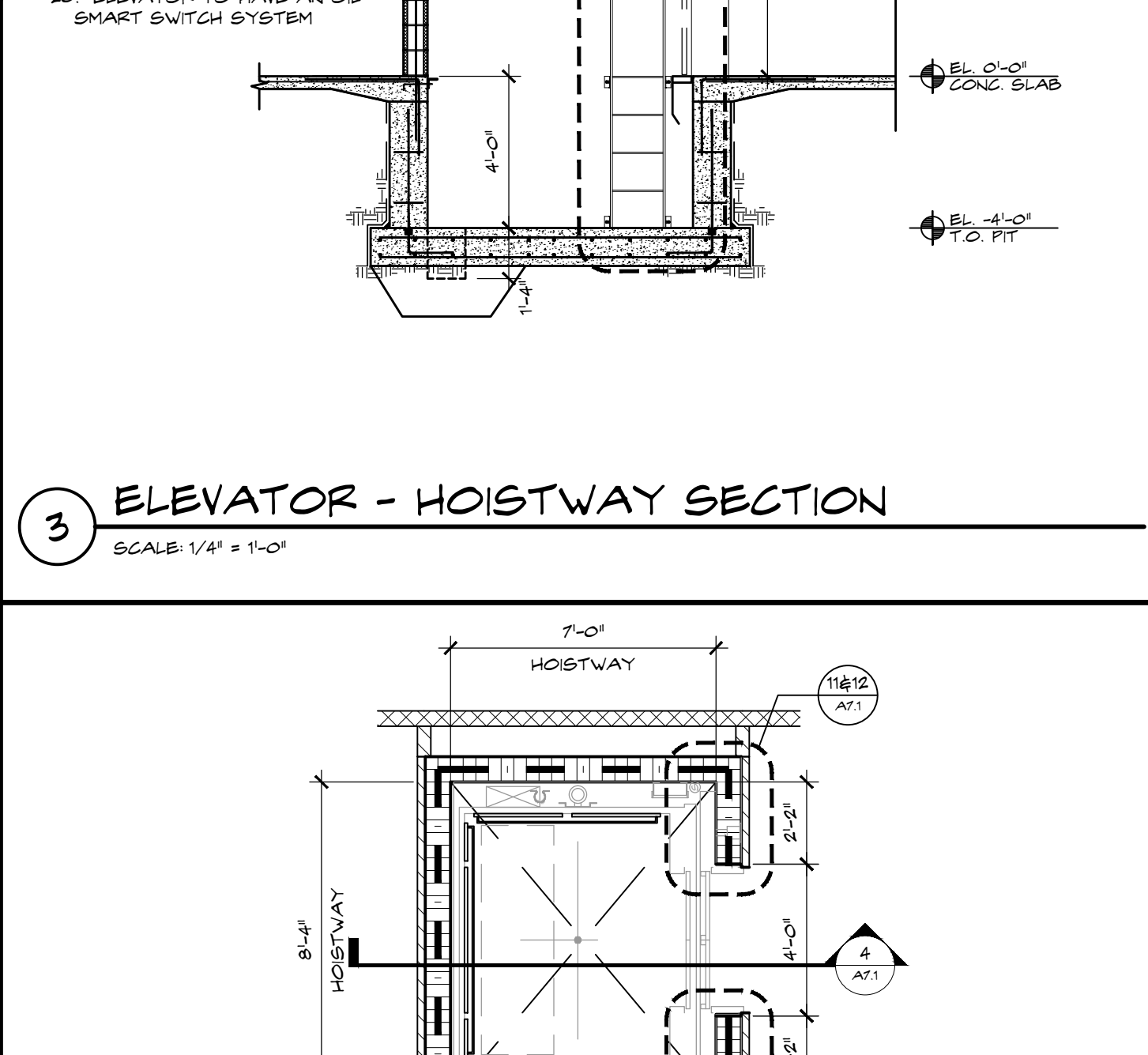
11 JAMB DETAIL AT 1ST FLOOR
SCALE: 3/4" = 1'-0"



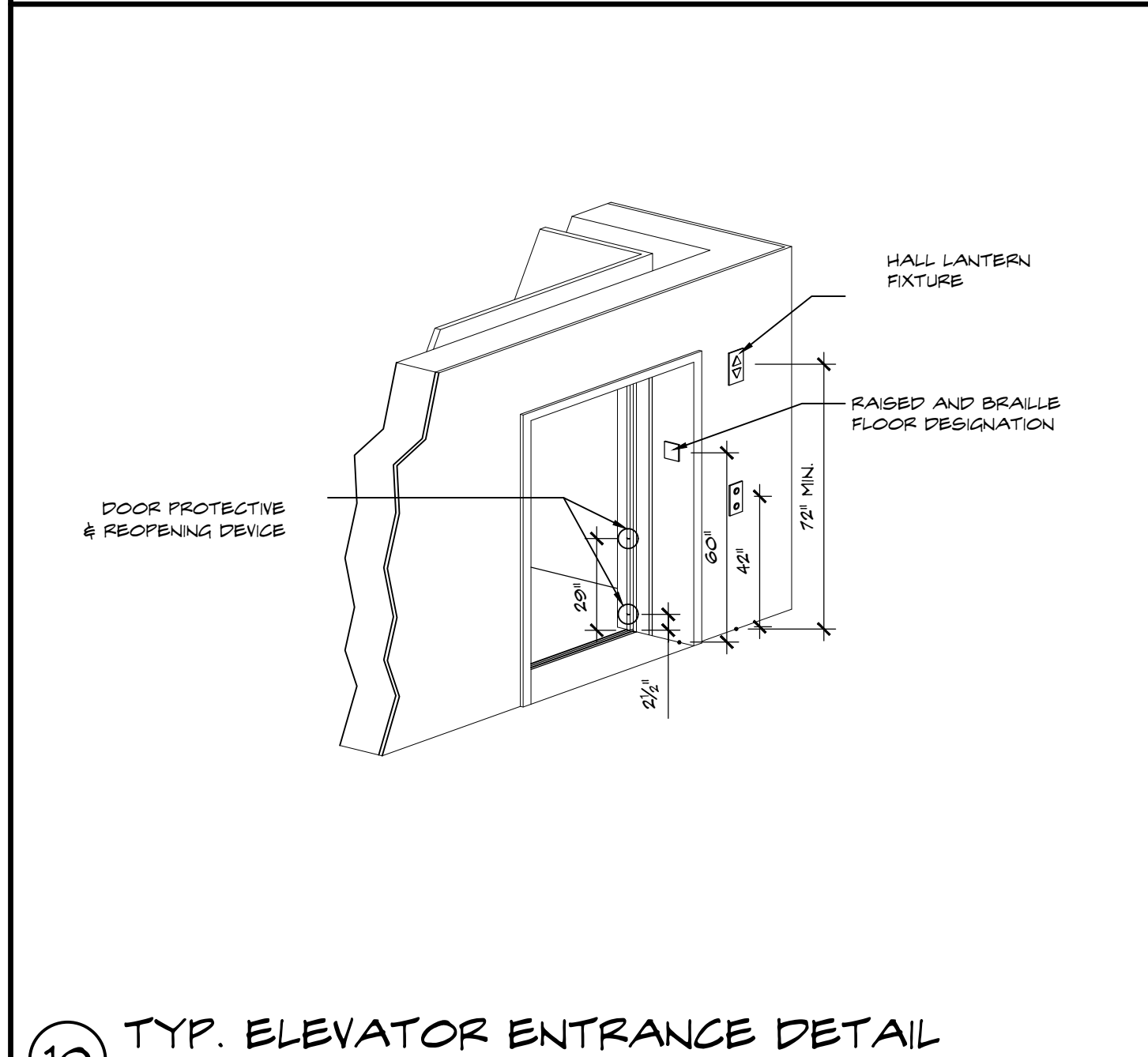
8 SILL DETAIL AT 2ND FLOOR
SCALE: 3/4" = 1'-0"



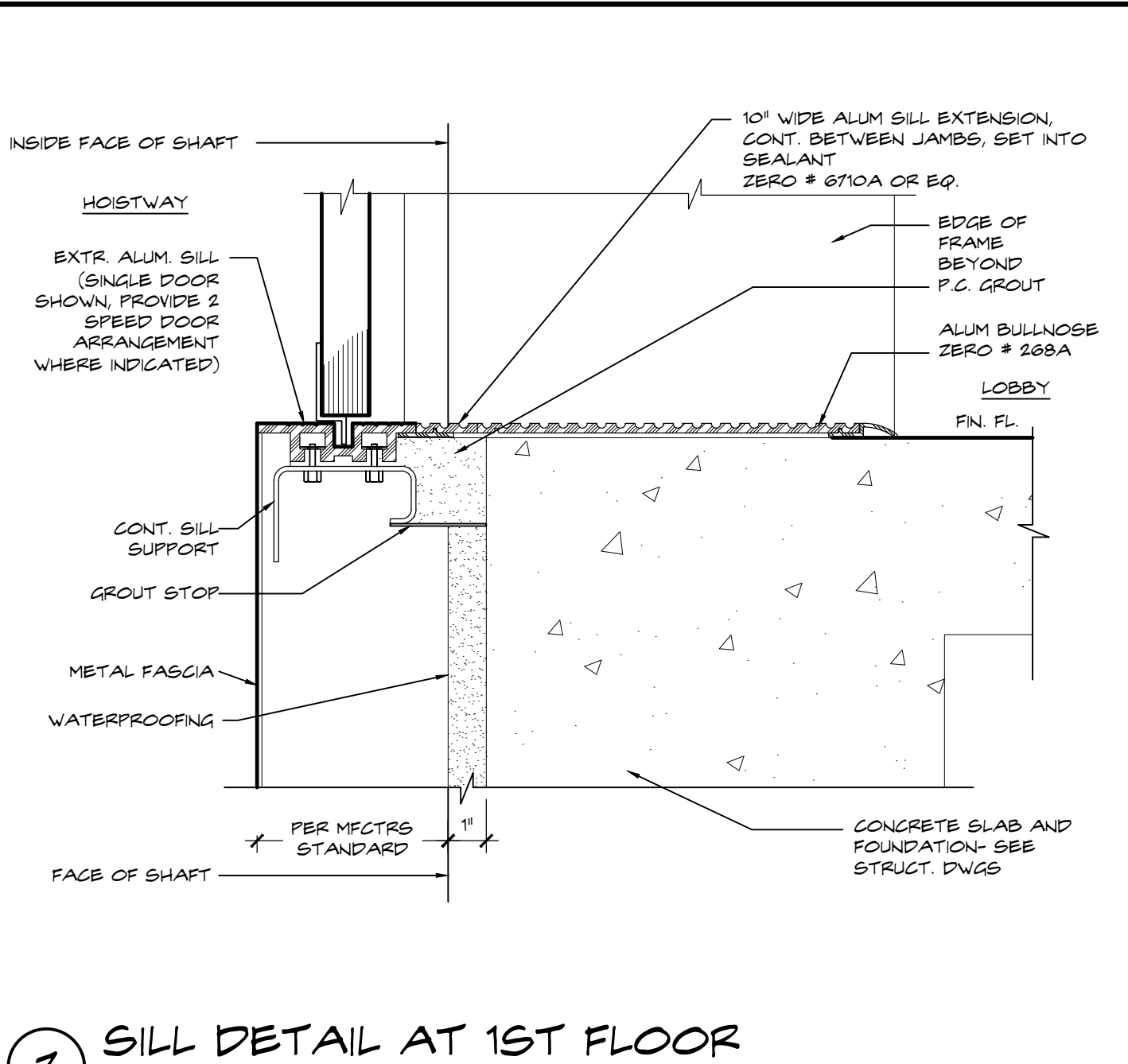
5 SUMP PIT DETAIL
SCALE: 3/4" = 1'-0"



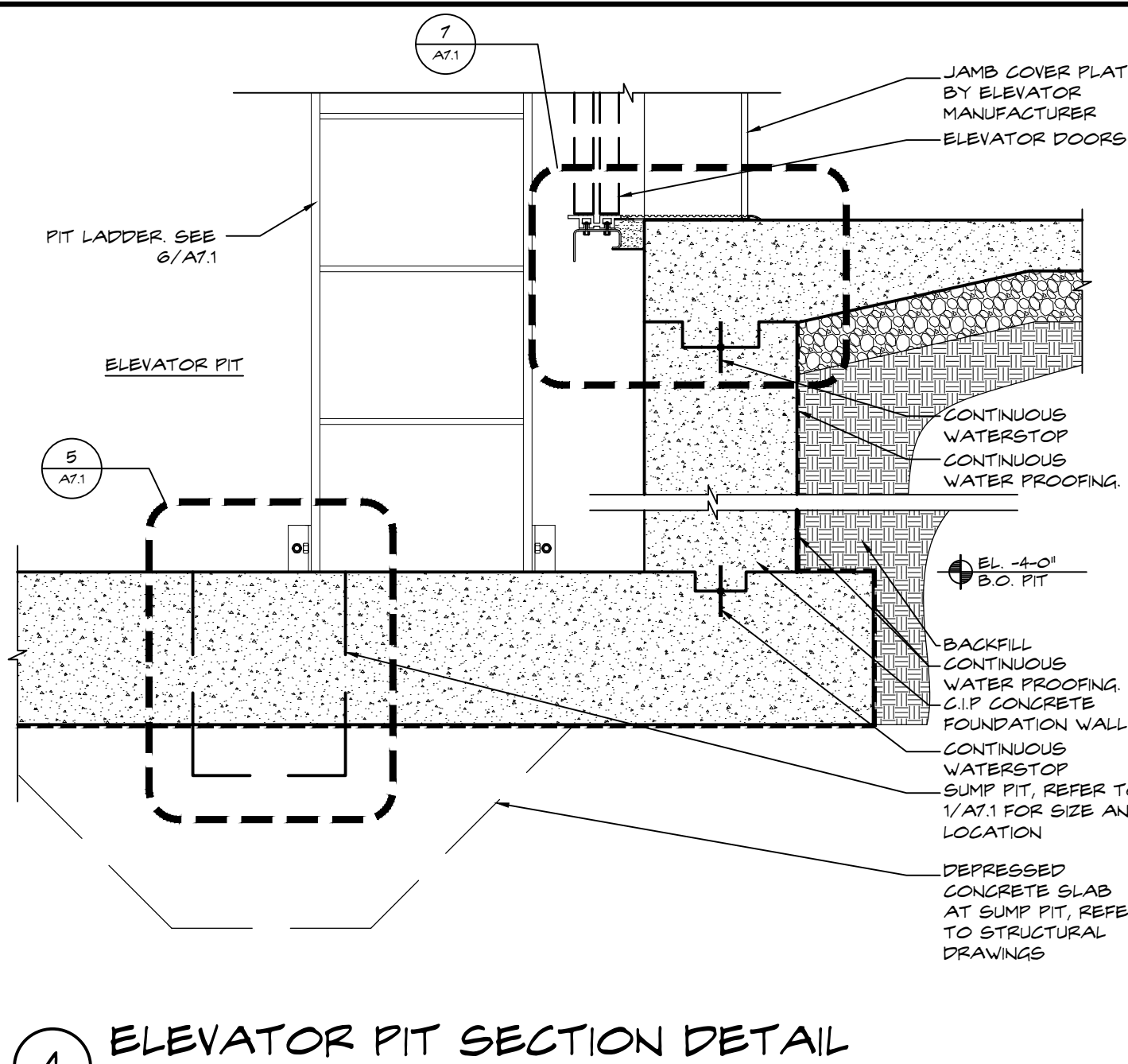
2 ELEVATOR - 1ST & 2ND FLOOR PLANS
SCALE: 1/4" = 1'-0"



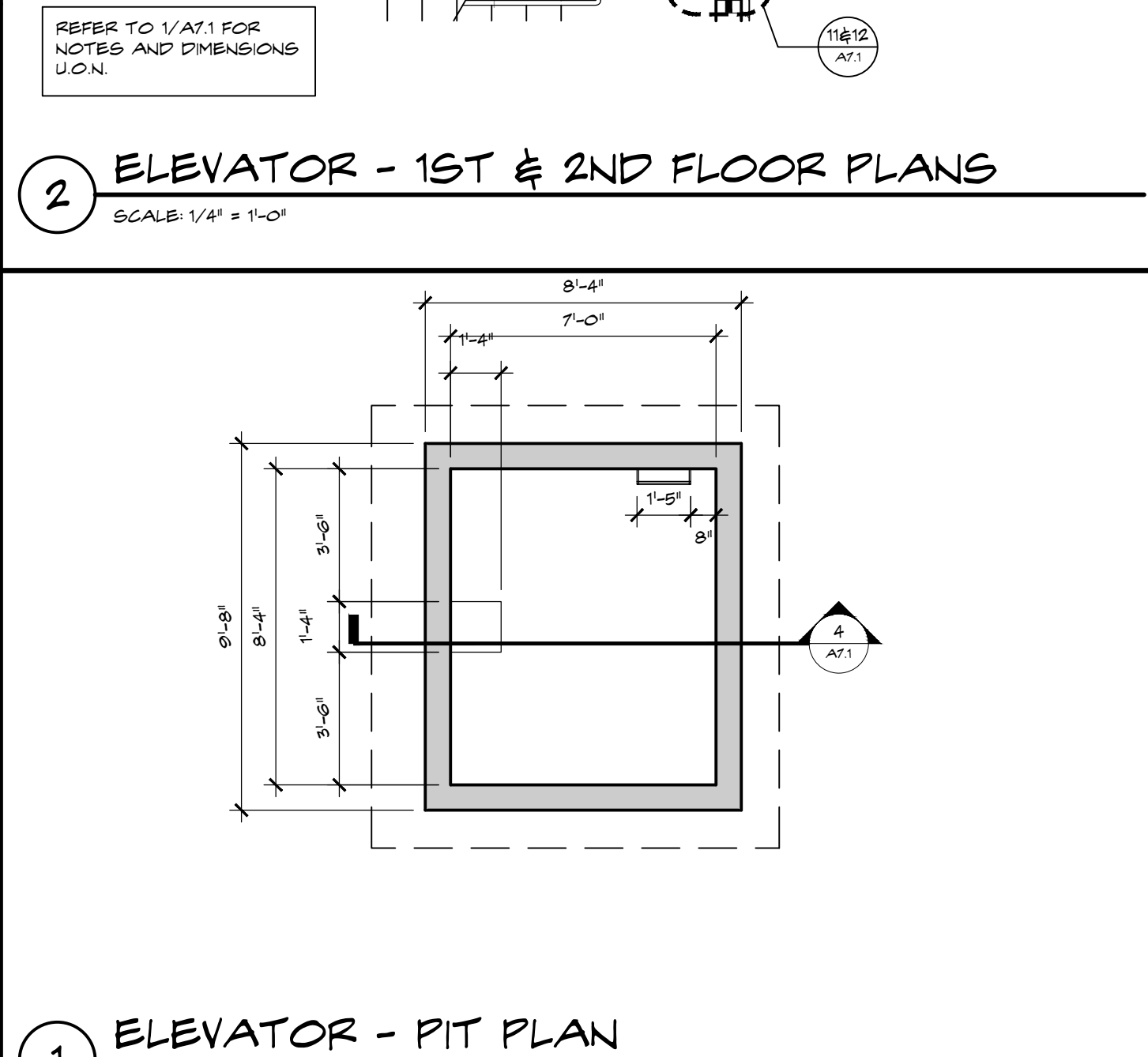
10 TYP. ELEVATOR ENTRANCE DETAIL
SCALE: 1/2" = 1'-0"



7 SILL DETAIL AT 1ST FLOOR
SCALE: 3/4" = 1'-0"



4 ELEVATOR PIT SECTION DETAIL
SCALE: 1" = 1'-0"



1 ELEVATOR - PIT PLAN
SCALE: 1/4" = 1'-0"

207 SIXTH STREET
WEST PALM BEACH, FLORIDA 33401
ph: 561.684.6844 • gliddenspina.com
FL Lic # A26202399

GLIDDENSPINA
+ PARTNERS
Architecture - Interior Design
Keith M. Spina # A613019

New Building For:
OPPORTUNITY INC.
EARLY LEARNING CENTER
4171 Westgate Avenue
Palm Beach County, Florida

THESE DRAWINGS ARE FOR THE EXCLUSIVE USE OF GLIDDEN SPINA + PARTNERS, INC. AND MAY NOT BE DUPLICATED, REPRODUCED OR USED IN ANY MANNER WITHOUT THE EXPRESS WRITTEN CONSENT OF GLIDDEN SPINA + PARTNERS, INC. ALL RIGHTS RESERVED.

Revisions:

Project no: 14224
Date: 09.09.16
Drawn by: WS
Project Architect: WC / DR

A7.1
09.09.16 BID/PERMIT