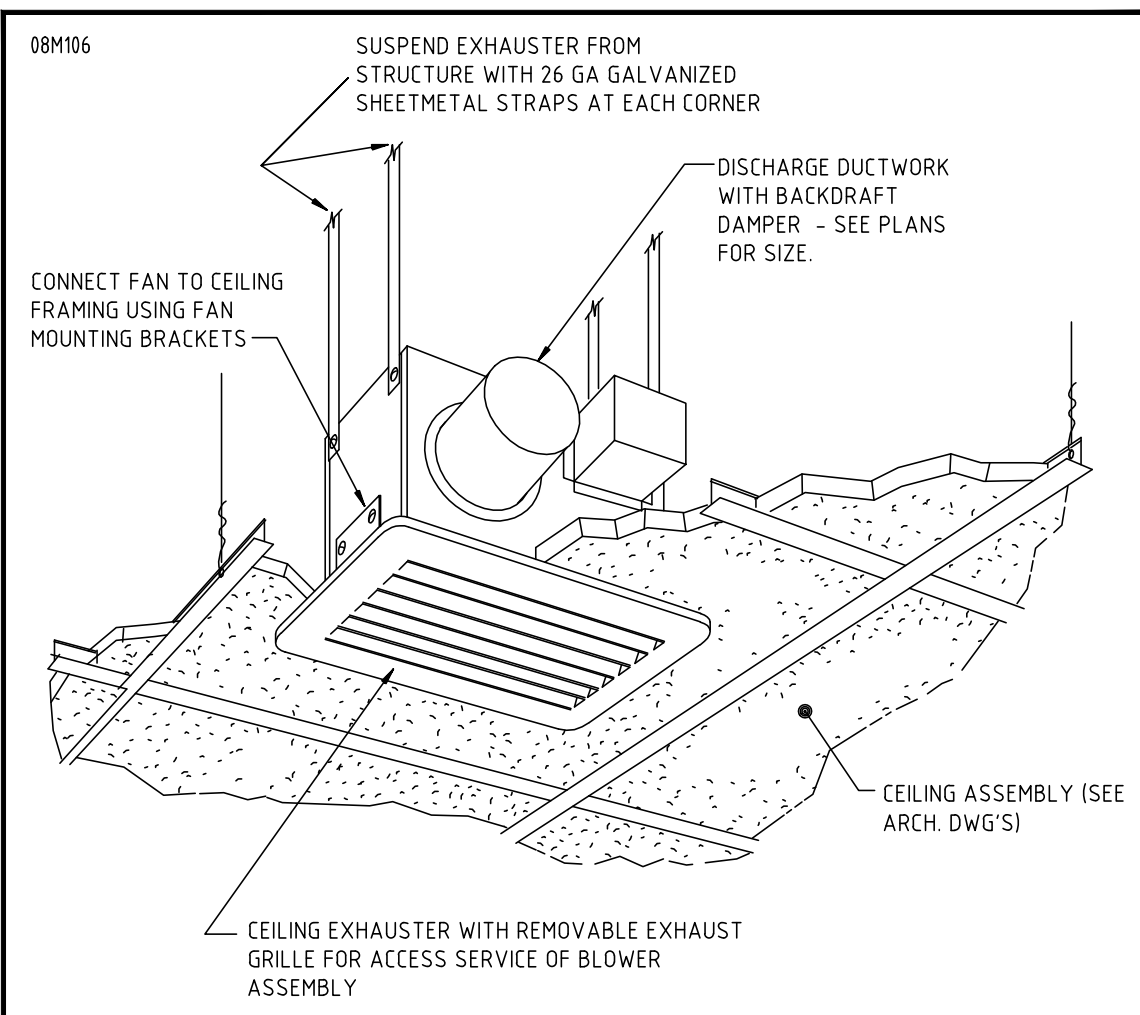
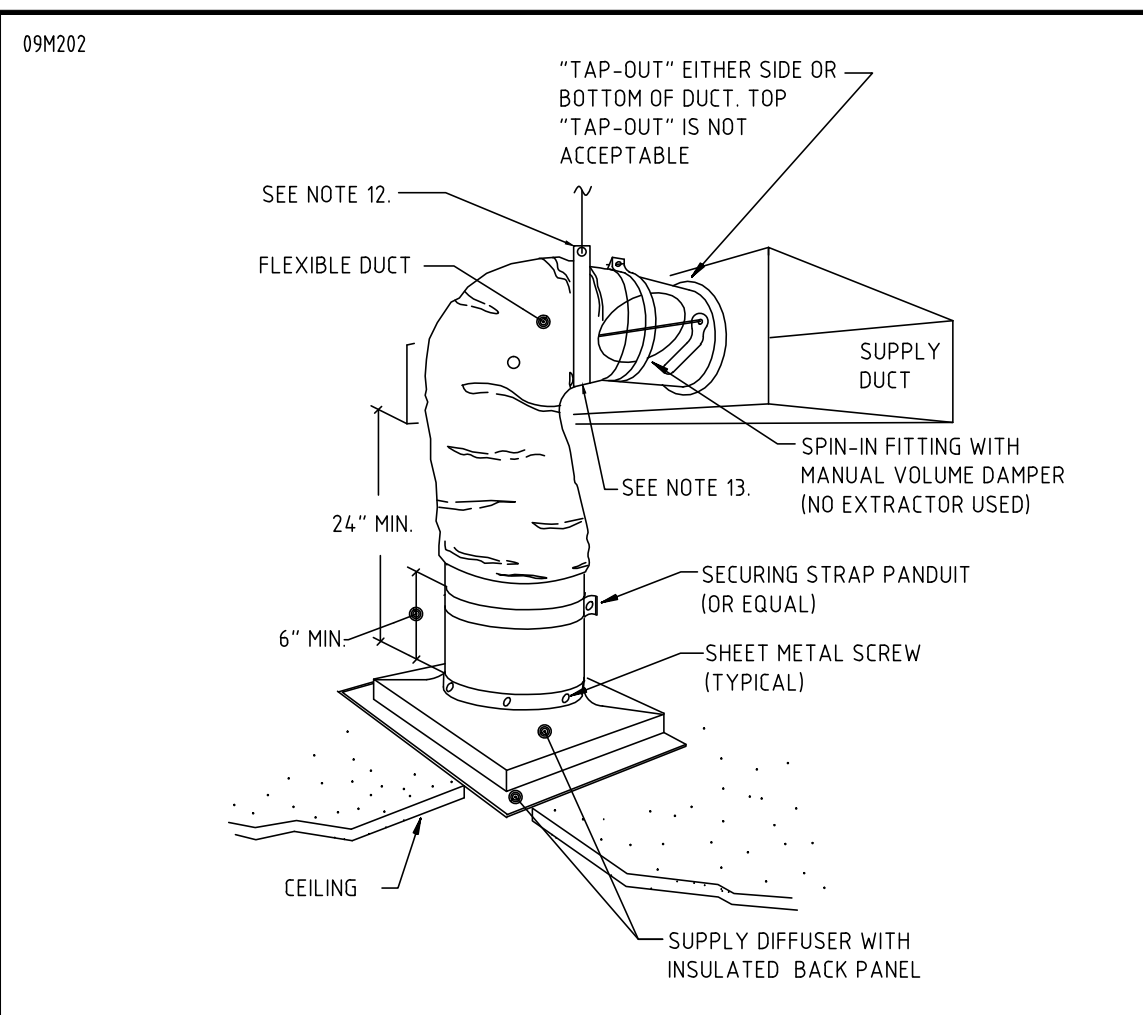


DETAIL NO. 1 METHODS OF HANGING RIGID DUCT DETAIL NOT TO SCALE

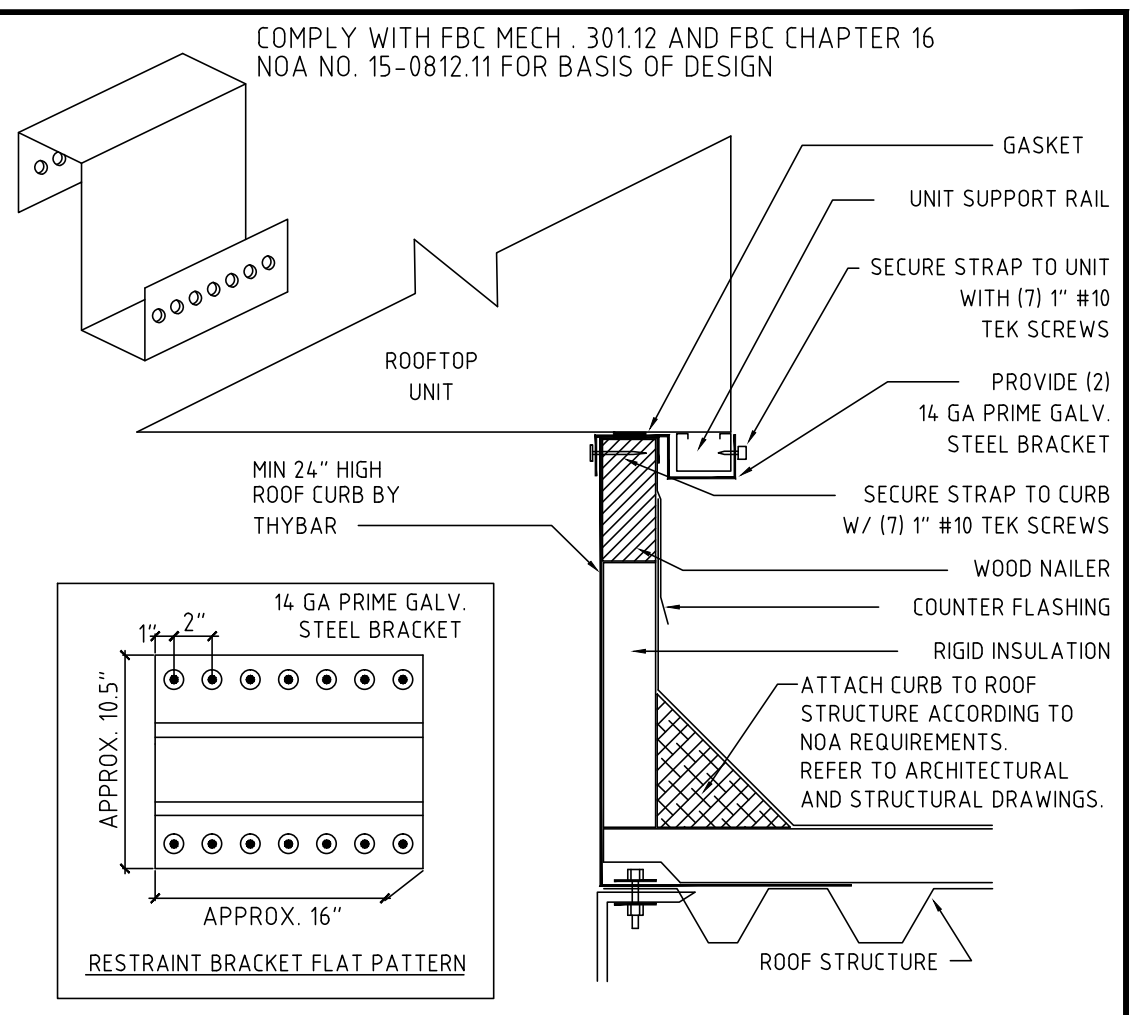


DETAIL NO. 2 CEILING MOUNTED FAN DETAIL NOT TO SCALE

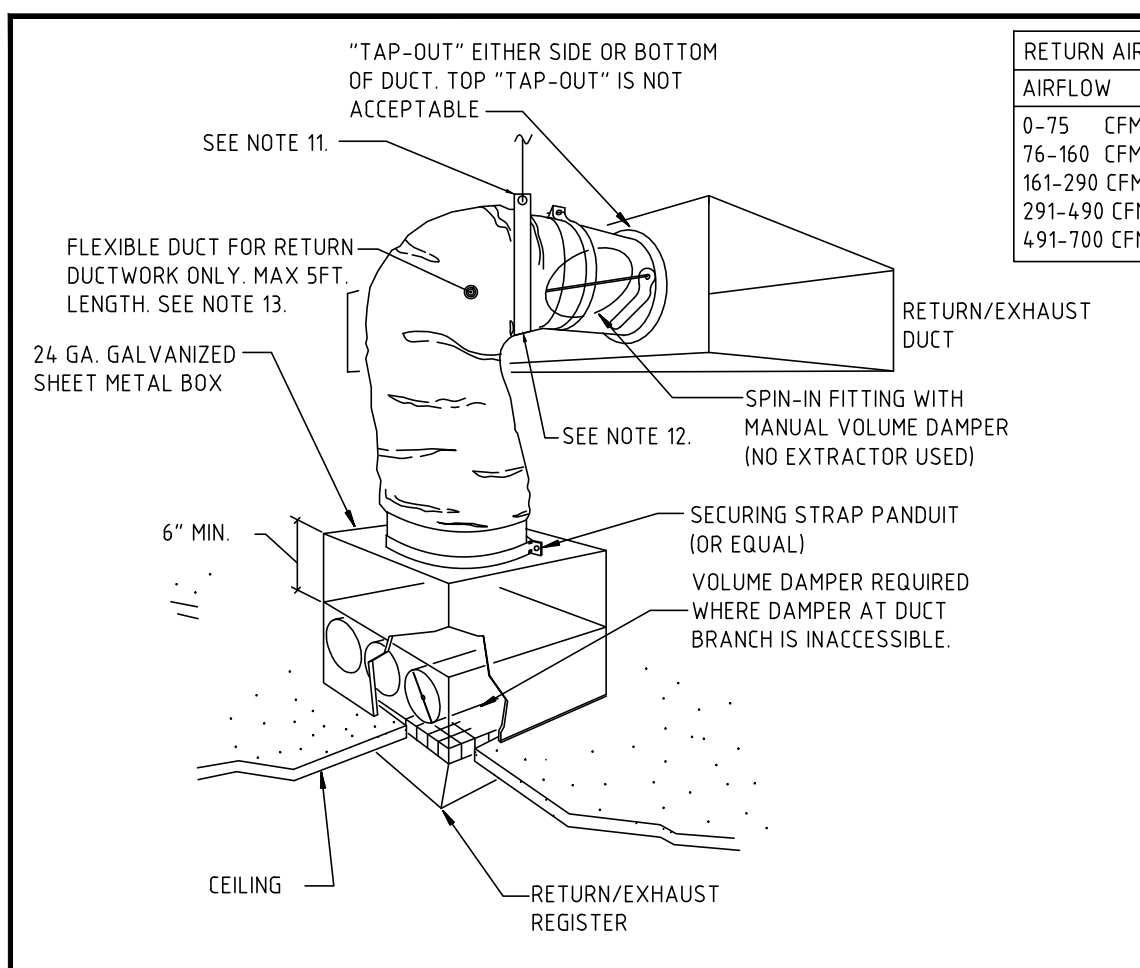


DETAIL NO. 3 DUCTWORK CONNECTION TO SUPPLY DIFFUSER (FLEX DUCT) DETAIL NOT TO SCALE

- NOTES:
- FOLLOW MFR'S INSTRUCTIONS FOR INSTALLATION OF SUPPLY DIFFUSER IN CEILING.
 - SHEET METAL DUCTS SHALL BE FABRICATED & INSTALLED PER THE LATEST EDITION OF SMACNA AND THE FLORIDA ENERGY CONSERVATION CODE.
 - ALTERNATE INTERPRETATIONS OF SMACNA DUCT MATERIAL, HANGERS AND REINFORCEMENTS ARE SUBJECT TO ENGINEER APPROVAL, AND REQUIRE SEPARATE SUBMITTAL OF THE ALTERNATES.
 - FLEXIBLE DUCT CONNECTORS SHALL BE PROVIDED AT CONNECTIONS TO ALL EQUIPMENT.
 - RECTANGULAR ELBOWS SHALL BE SQUARE NECK (SAME IN & OUT DIMENSIONS) WITH 2" DOUBLE THICKNESS TURNING VANES.
 - OFFSETS SHALL NOT REDUCE THE FREE AREA, AND SHALL NOT EXCEED 30° UNLESS OTHERWISE SPECIFIED.
 - TRANSITIONS SHALL NOT EXCEED 13 RATIO 14" TRANSITION PER FOOT SINGLE SIDED TRANSITION, AND 8" PER FOOT DOUBLE SIDED TRANSITION.
 - ROUND DUCT CONNECTIONS SHALL BE SPIN-IN TYPE, WITH DAMPER AND HANDLE. SPRAY PAINT LOCATIONS OF HANDLES.
 - FLEXIBLE DUCT SHALL INCLUDE AN INNER POLYETHYLENE LINER, A SPRING HELIX, 1-1/2" BLANKET INSULATION WITH A MINIMUM INSTALLED R-VALUE OF 6.0, A FOIL OUTER VAPOR BARRIER, AND BE UL-181 APPROVED.
 - ALL TAPE SHALL BE FASSON 0810 (NO SUBSTITUTIONS), SMACNA APPROVED.
 - COMPLETELY SEAL ALL SUPPLY, RETURN AND OUTSIDE AIR DUCTS WITH RCD #6 MASTIC OR "HARDCAST" MASTIC TAPE (NO SUBSTITUTIONS).
 - HANGER WIRE OR STRAPS 5'-0" MAX DISTANCE BETWEEN AND BENDS.
 - SUPPORTS SHALL BE PROVIDED WITHIN 18" OF INTERMEDIATE FITTING AND BETWEEN INTERMEDIATE FITTINGS.
 - 1-1/2" GALV STEEL BAND CLAMP TO MATCH DUCT.

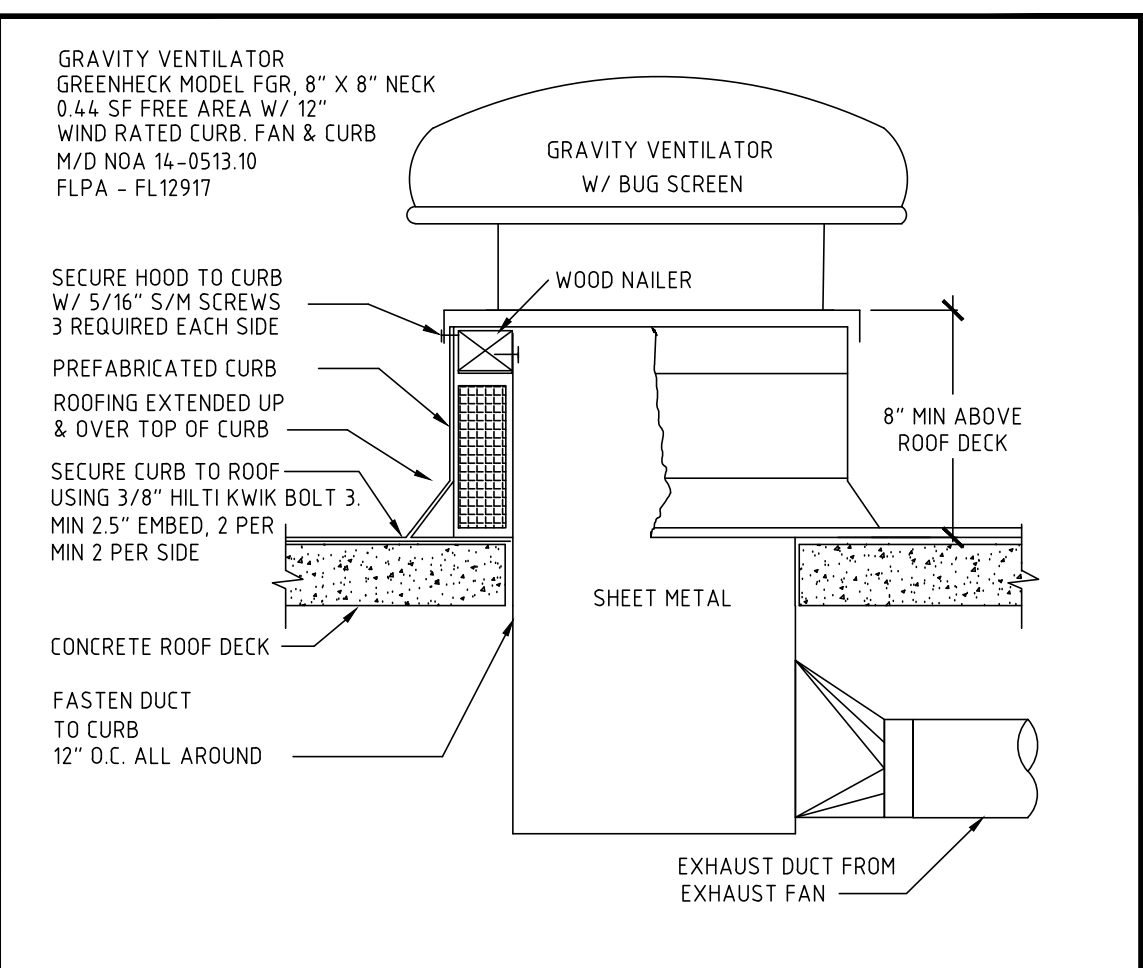


DETAIL NO. 4 OAU MOUNTING DETAIL NOT TO SCALE

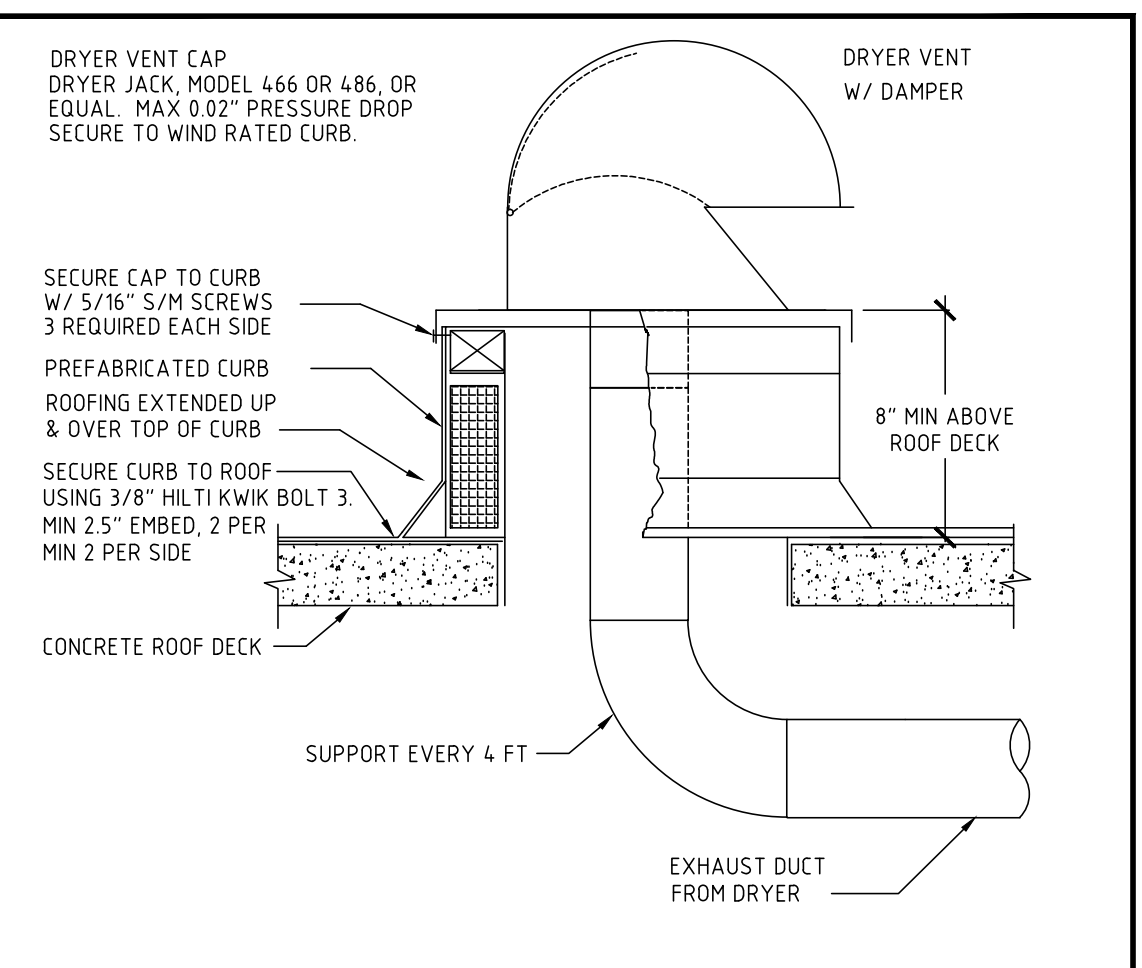


DETAIL NO. 5 DUCTWORK CONNECTION TO RETURN/EXHAUST GRILL (FLEX DUCT) DETAIL NOT TO SCALE

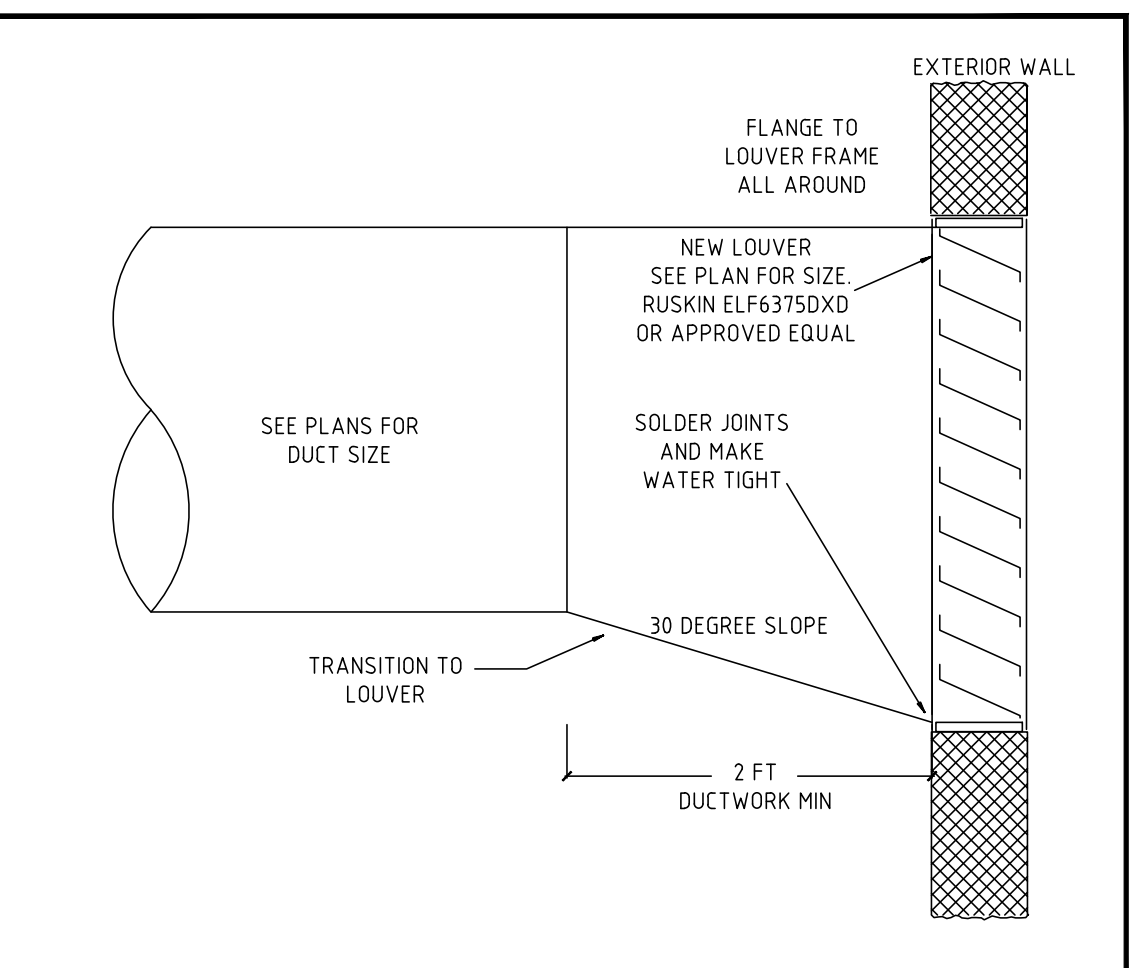
- NOTES:
- SHEET METAL DUCTS SHALL BE FABRICATED & INSTALLED PER THE LATEST EDITION OF SMACNA AND THE FLORIDA ENERGY CONSERVATION CODE.
 - ALTERNATE INTERPRETATIONS OF SMACNA DUCT MATERIAL, HANGERS AND REINFORCEMENTS ARE SUBJECT TO ENGINEER APPROVAL, AND REQUIRE SEPARATE SUBMITTAL OF THE ALTERNATES.
 - FLEXIBLE DUCT CONNECTORS SHALL BE PROVIDED AT CONNECTIONS TO ALL EQUIPMENT.
 - RECTANGULAR ELBOWS SHALL BE SQUARE NECK (SAME IN & OUT DIMENSIONS) WITH 2" DOUBLE THICKNESS TURNING VANES.
 - OFFSETS SHALL NOT REDUCE THE FREE AREA, AND SHALL NOT EXCEED 30° UNLESS OTHERWISE SPECIFIED.
 - TRANSITIONS SHALL NOT EXCEED 13 RATIO 14" TRANSITION PER FOOT SINGLE SIDED TRANSITION, AND 8" PER FOOT DOUBLE SIDED TRANSITION.
 - ROUND DUCT CONNECTIONS SHALL BE SPIN-IN TYPE, WITH DAMPER AND HANDLE. SPRAY PAINT LOCATIONS OF HANDLES.
 - FLEXIBLE DUCT SHALL INCLUDE AN INNER POLYETHYLENE LINER, A SPRING HELIX, 1-1/2" BLANKET INSULATION WITH A MINIMUM INSTALLED R-VALUE OF 6.0, A FOIL OUTER VAPOR BARRIER, AND BE UL-181 APPROVED.
 - ALL TAPE SHALL BE FASSON 0810 (NO SUBSTITUTIONS), SMACNA APPROVED.
 - COMPLETELY SEAL ALL SUPPLY, RETURN AND OUTSIDE AIR DUCTS WITH RCD #6 MASTIC OR "HARDCAST" MASTIC TAPE (NO SUBSTITUTIONS).
 - HANGER WIRE OR STRAPS 5'-0" MAX DISTANCE BETWEEN AND BENDS.
 - SUPPORTS SHALL BE PROVIDED WITHIN 18" OF INTERMEDIATE FITTING AND BETWEEN INTERMEDIATE FITTINGS.
 - NO FLEXIBLE DUCT ALLOWED FOR EXHAUST GRILLE/REGISTER. USE RIGID SHEET METAL DUCT FOR EXHAUST GRILLE/REGISTER.
- | RETURN AIR FLEX SIZING AIRFLOW | DUCT SIZE |
|--------------------------------|-----------|
| 0-75 CFM | 6" |
| 76-160 CFM | 8" |
| 161-290 CFM | 10" |
| 291-490 CFM | 12" |
| 491-700 CFM | 14" |



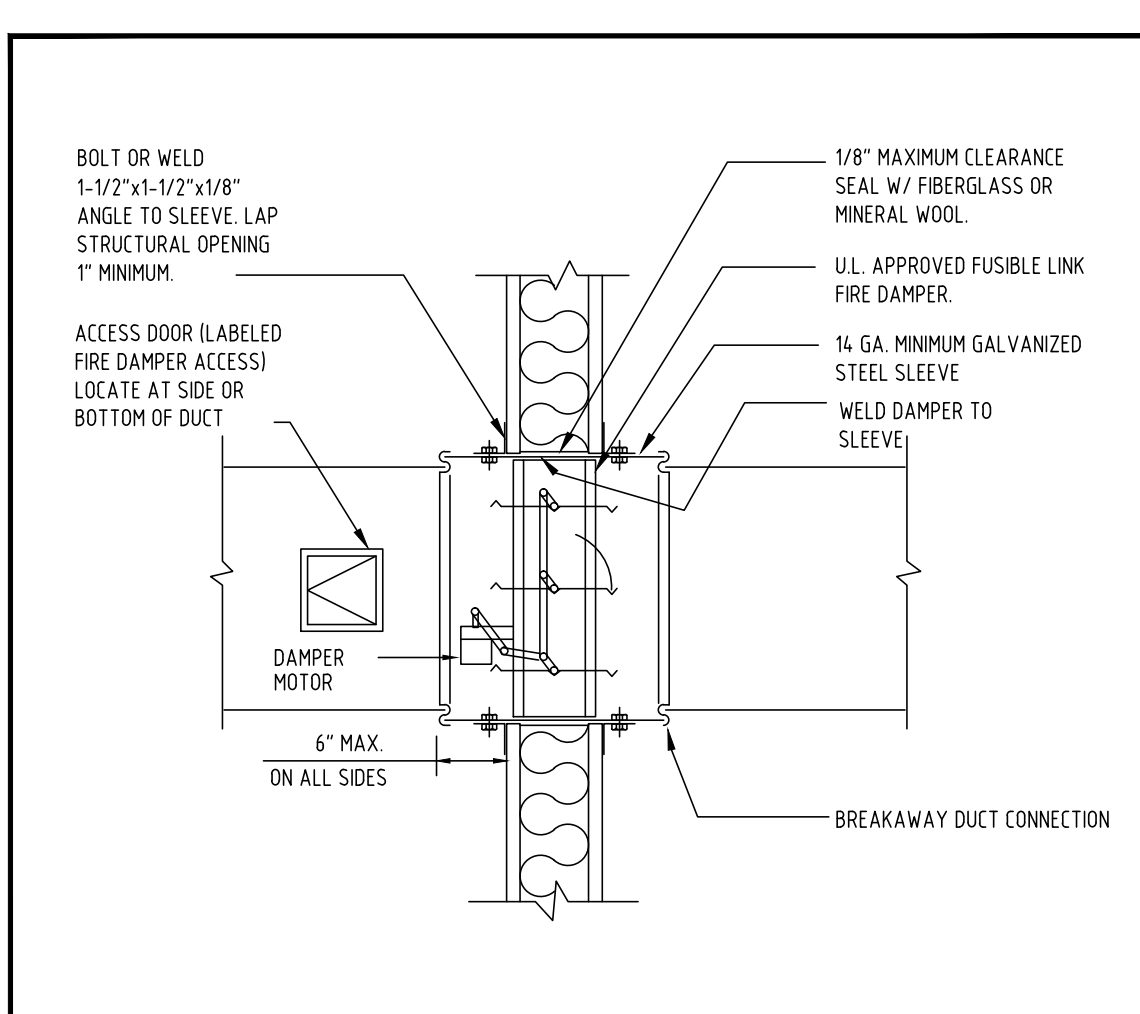
DETAIL NO. 6 ROOF MOUNTED GRAVITY EXHAUST HOOD NOT TO SCALE



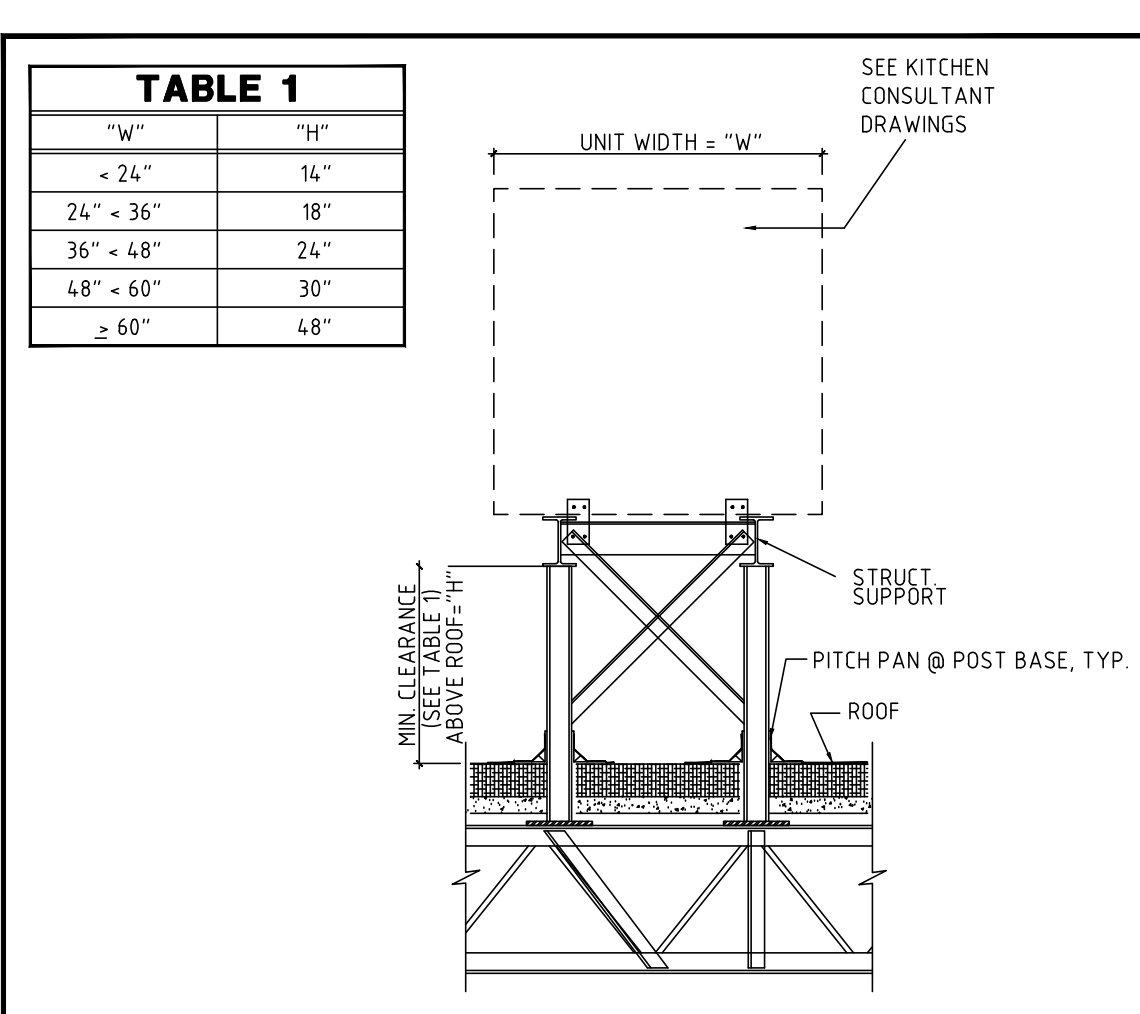
DETAIL NO. 7 ROOF MOUNTED DRYER VENT CAP NOT TO SCALE



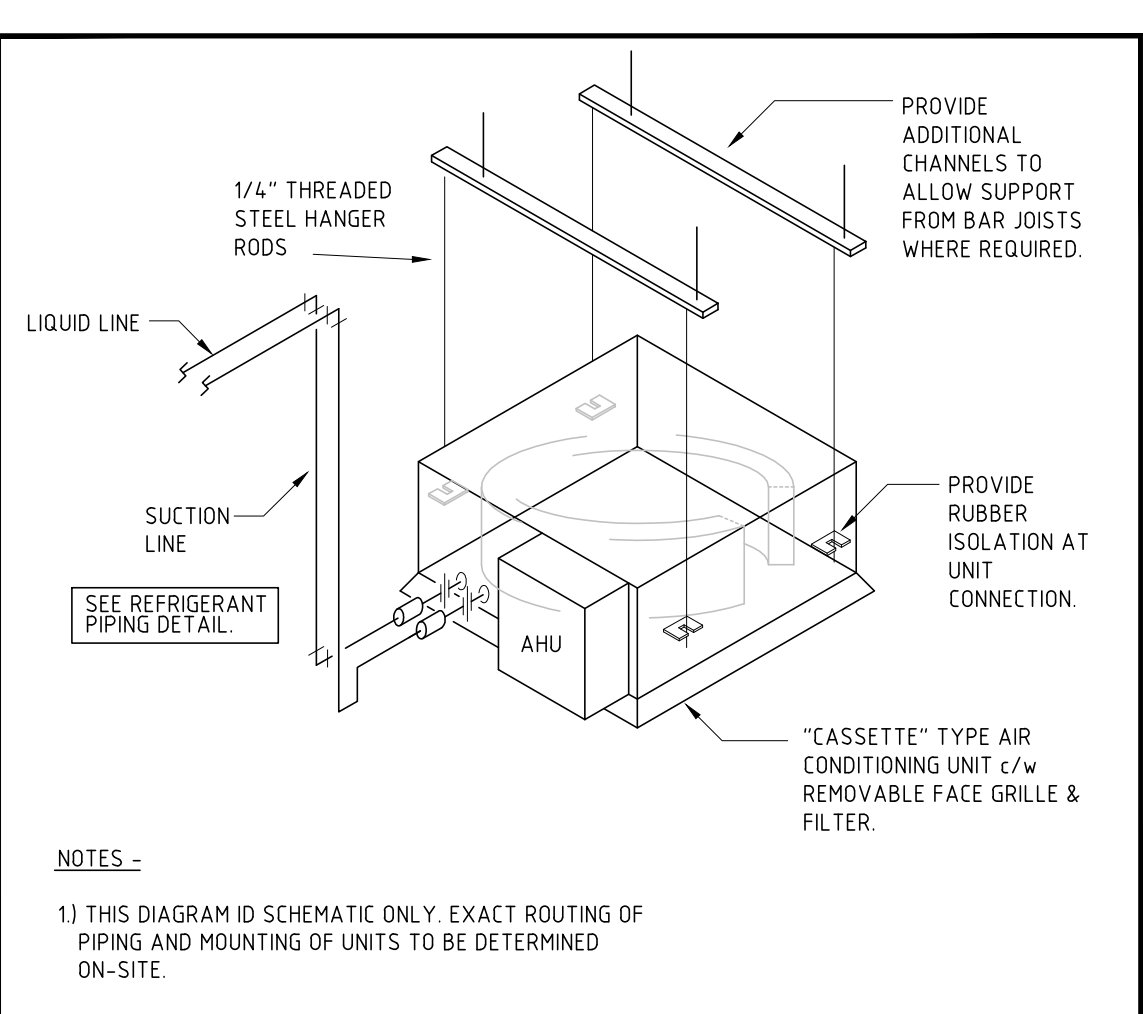
DETAIL NO. 8 DUCT CONNECTION AT LOUVER DETAIL NOT TO SCALE



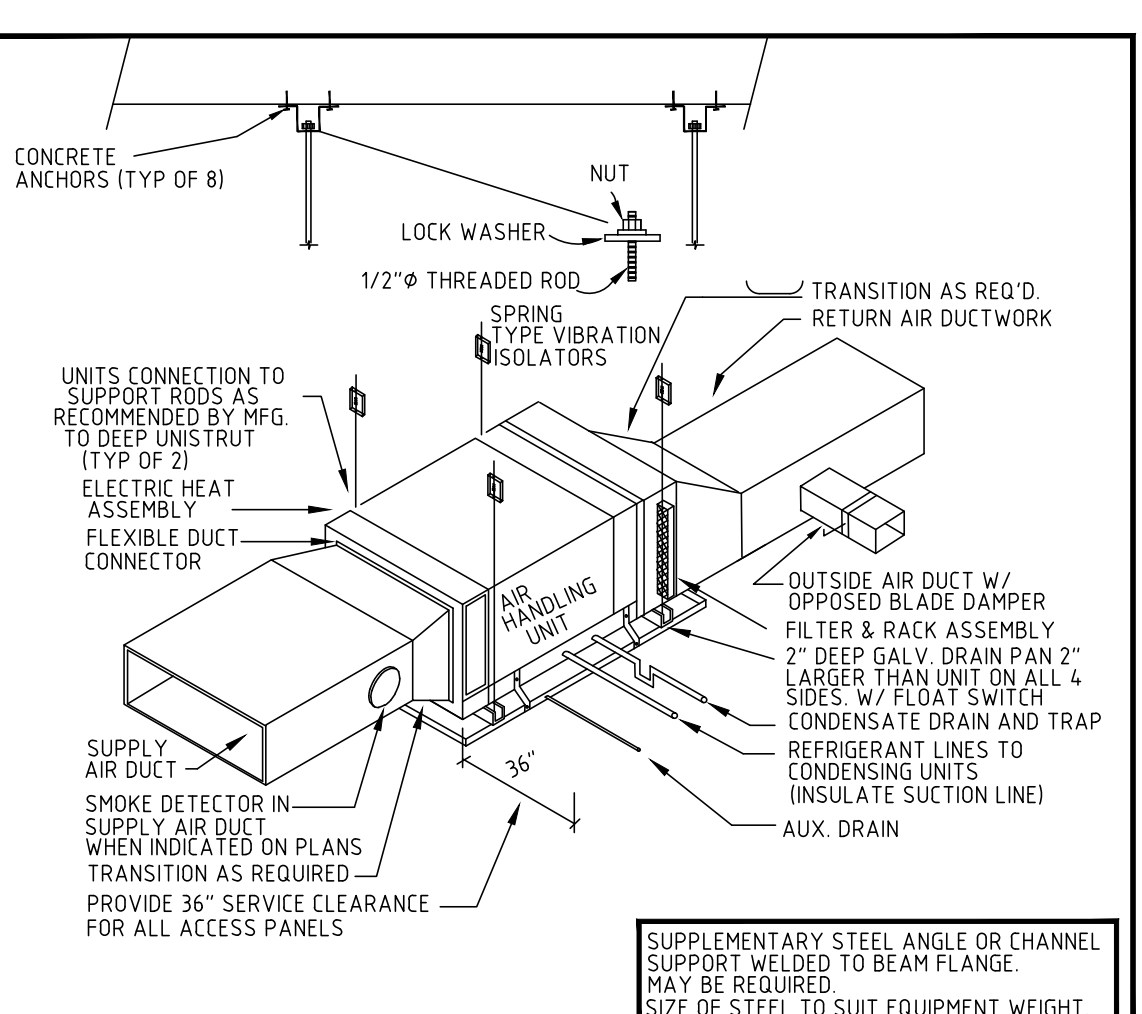
DETAIL NO. 9 COMBINATION FIRE/SMOKE DAMPER DETAIL NOT TO SCALE



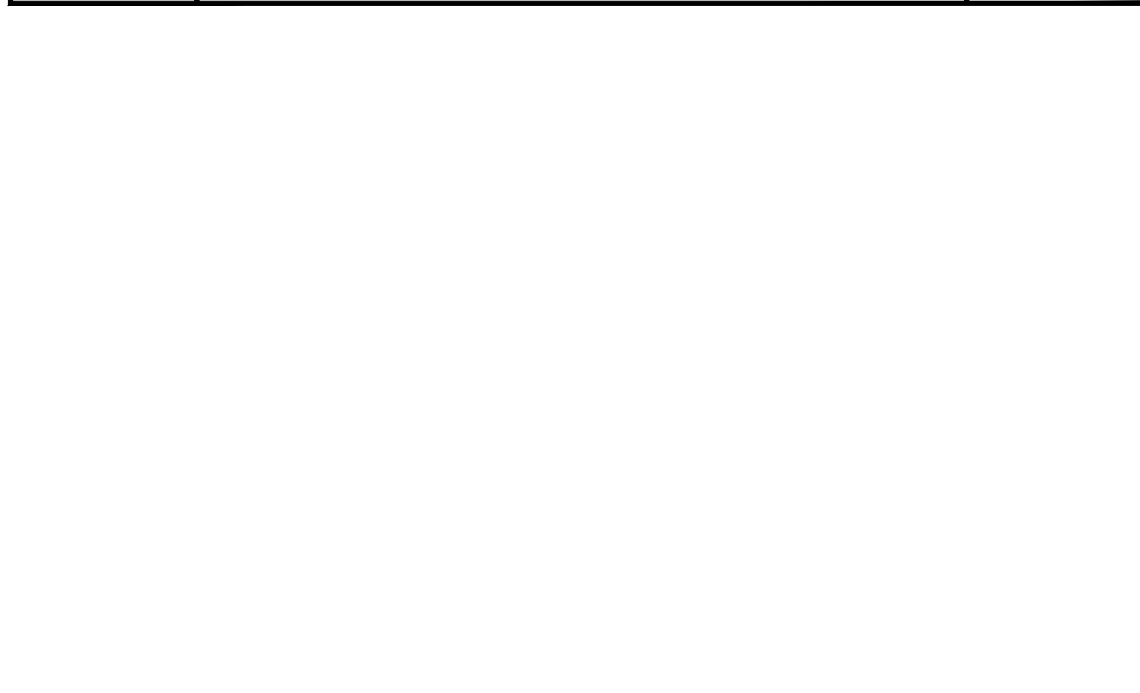
DETAIL NO. 10 ROOF EQUIPMENT RACK DETAIL NOT TO SCALE



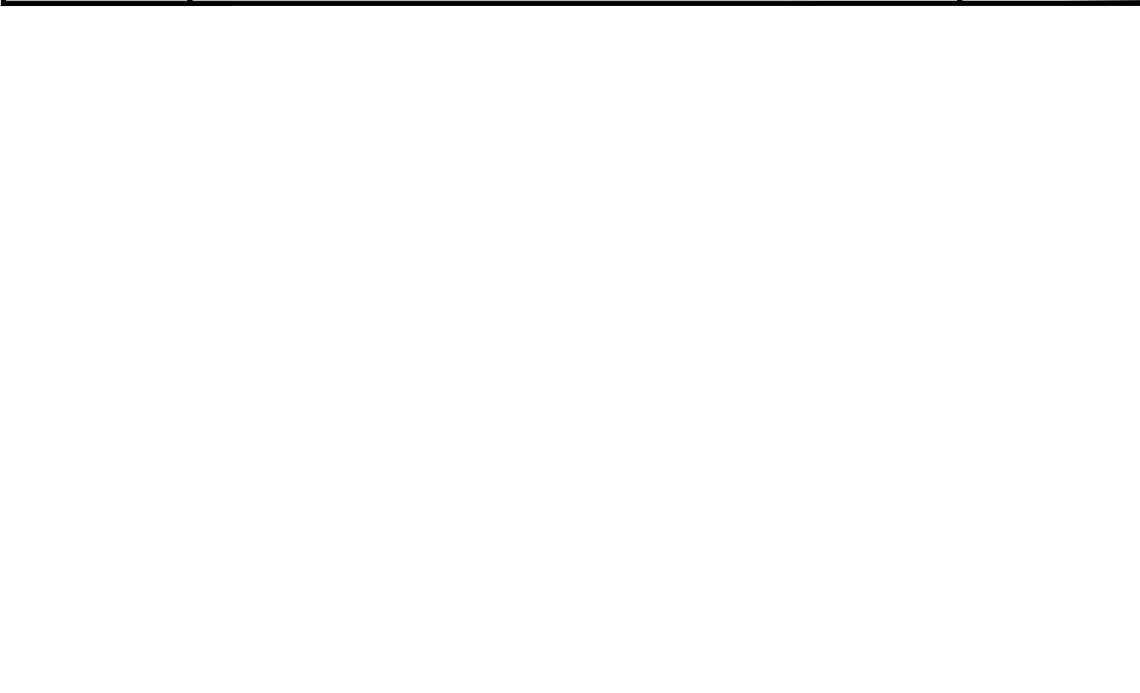
DETAIL NO. 11 VRF CASSETTE DETAIL NOT TO SCALE



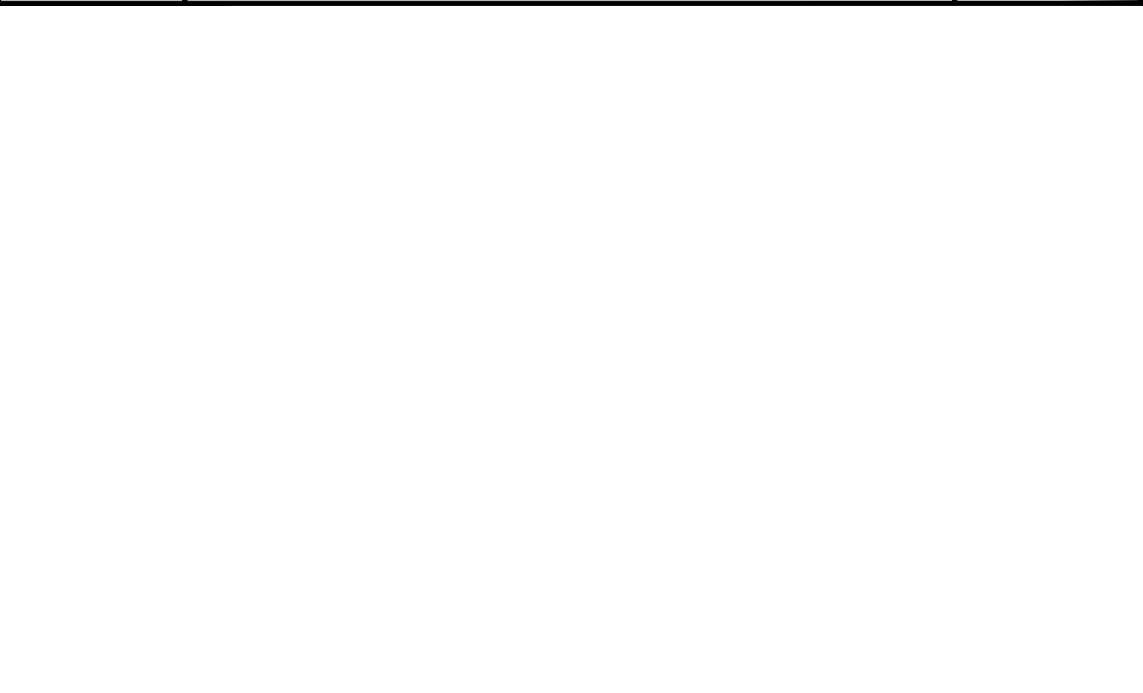
DETAIL NO. 12 AIR HANDLER DETAIL NOT TO SCALE



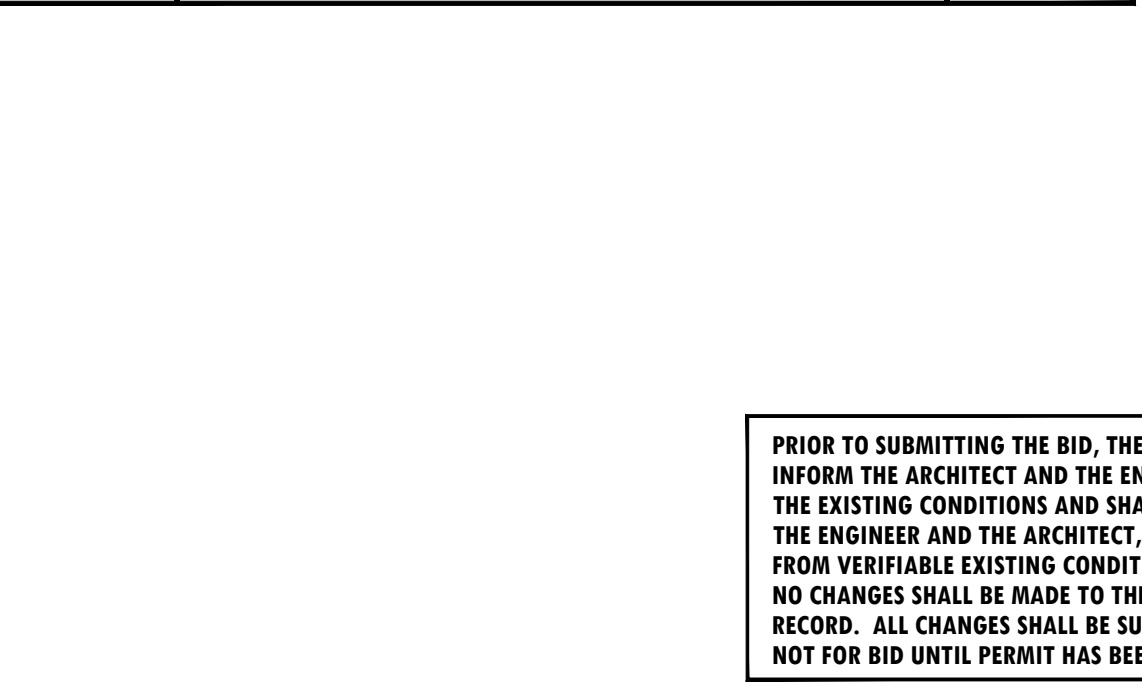
DETAIL NO. 13 DUCTWORK CONNECTION TO RETURN/EXHAUST GRILL (FLEX DUCT) DETAIL NOT TO SCALE



DETAIL NO. 14 ROOF EQUIPMENT RACK DETAIL NOT TO SCALE



DETAIL NO. 15 VRF CASSETTE DETAIL NOT TO SCALE



DETAIL NO. 16 AIR HANDLER DETAIL NOT TO SCALE

THESE DRAWINGS ARE FOR THE EXCLUSIVE USE OF GLIDDEN SPINA + PARTNERS, INC. AND MAY NOT BE DUPLICATED, REPRODUCED OR USED IN ANY MANNER WITHOUT THE EXPRESS WRITTEN CONSENT OF GLIDDEN SPINA + PARTNERS, INC. ALL RIGHTS RESERVED.

Revisions:

Project no:	15435
Date:	09.09.16
Drawn by:	RB/SK/JUS
Project Architect:	BJ

PERMIT / BID SET: 09/07/16

FAE CONSULTING

700 WEST HILLSBORO BLVD. - BLDG. #1, SUITE 204
DEERFIELD BEACH, FLORIDA 33441
TEL: (561) 391-9292 FAX: (561) 391-9898
CERTIFICATE OF AUTHORIZATION NO. 28107
LIRELLA IARFATE, P.E. LICENSE #73122
STEPHEN F. ROLLIN, P.E. LICENSE #36428
DONALD H. AUSTIN, JR., PE LICENSE #60651
JASON BARBER, P.E. LICENSE #73050
E-MAIL: INFO@FAECONSULTING.COM
DESIGNED BY: BJ/SK/JUS PM: BJ P/N 15434

PRIOR TO SUBMITTING THE BID, THE CONTRACTOR SHALL FIELD VERIFY ALL EXISTING CONDITIONS AND INFORM THE ARCHITECT AND THE ENGINEER OF ANY DISCREPANCY BETWEEN THESE DOCUMENTS AND THE EXISTING CONDITIONS AND SHALL INCLUDE IN THE BID TO CORRECT THE SAME AS DIRECTED. THE ENGINEER AND THE ARCHITECT, ARE NOT RESPONSIBLE FOR ANY ADDITIONAL COSTS RESULTING FROM VERIFIABLE EXISTING CONDITIONS DISCOVERED AFTER CONTRACT HAS BEEN AWARDED. NO CHANGES SHALL BE MADE TO THESE PLANS WITHOUT PRIOR APPROVAL FROM THE ENGINEER OF RECORD. ALL CHANGES SHALL BE SUBMITTED FOR REVIEW PRIOR TO INSTALLATION. NOT FOR BID UNTIL PERMIT HAS BEEN ISSUED.