

LIGHTING FIXTURE SCHEDULE

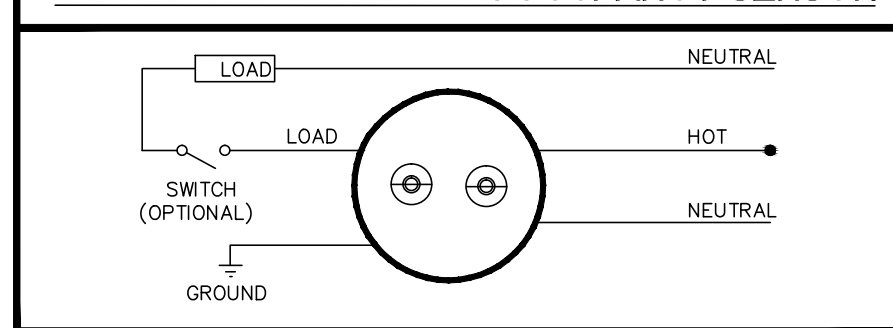
TYPE	DESCRIPTION	MANUFACTURER	CATALOG NUMBER	VOLT	# LAMPS	LAMP TYPE	INPUT WATTS	MOUNTING	REMARKS
A	2' X 4' LED	PHILIPS DAYBRITE	2EVG54L840-4-D-UNV-DIM	120-277	—	LED 4000K	54.8W	RECESS	
AE	2' X 4' LED WITH EMERGENCY BATTERY	PHILIPS DAYBRITE	2EVG54L840-4-D-UNV-DIM-EMLED	120-277	—	LED 4000K	54.8W	RECESS	
A1	2' X 4' LED	PHILIPS DAYBRITE	2EVG74L840-4-D-UNV-DIM	120-277	—	LED 4000K	82.6W	RECESS	
A1E	2' X 4' LED WITH EMERGENCY BATTERY	PHILIPS DAYBRITE	2EVG74L840-4-D-UNV-DIM-EMLED	120-277	—	LED 4000K	82.6W	RECESS	
A2	2' X 4' LED	PHILIPS DAYBRITE	2EVG48L840-4-D-UNV-DIM	120-277	—	LED 4000K	47.7W	RECESS	
A2E	2' X 4' LED WITH EMERGENCY BATTERY	PHILIPS DAYBRITE	2EVG48L840-4-D-UNV-DIM-EMLED	120-277	—	LED 4000K	47.7W	RECESS	
A3	2' X 4' LED	PHILIPS DAYBRITE	2EVG38L840-4-D-UNV-DIM	120-277	—	LED 4000K	36.5W	RECESS	
A3E	2' X 4' LED WITH EMERGENCY BATTERY	PHILIPS DAYBRITE	2EVG38L840-4-D-UNV-DIM-EMLED	120-277	—	LED 4000K	36.5W	RECESS	
B	2' X 2' LED	PHILIPS DAYBRITE	2EVG38L840-2-D-UNV-DIM	120-277	—	LED 4000K	40.1W	RECESS	
BE	2' X 2' LED WITH EMERGENCY BATTERY	PHILIPS DAYBRITE	2EVG38L840-2-D-UNV-DIM-EMLED	120-277	—	LED 4000K	40.1W	RECESS	
B1	2' X 2' LED	PHILIPS DAYBRITE	2EVG30L840-2-D-UNV-DIM	120-277	—	LED 4000K	30.2W	RECESS	
B1E	2' X 2' LED WITH EMERGENCY BATTERY	PHILIPS DAYBRITE	2EVG30L840-2-D-UNV-DIM-EMLED	120-277	—	LED 4000K	30.2W	RECESS	
B2	2' X 2' LED	PHILIPS DAYBRITE	2EVG45L840-2-D-UNV-DIM	120-277	—	LED 4000K	47.1W	RECESS	
B2E	2' X 2' LED WITH EMERGENCY BATTERY	PHILIPS DAYBRITE	2EVG45L840-2-D-UNV-DIM-EMLED	120-277	—	LED 4000K	47.1W	RECESS	
C	2' X 4' LENSED AND GASKETED LED	PHILIPS DAYBRITE	SPS24GFAV43A40UDZT-2W	120-277	—	LED 4000K	53W	RECESS	
CE	2' X 4' LENSED AND GASKETED LED WITH EMERGENCY BATTERY	PHILIPS DAYBRITE	SPS24GFAV43A40UDZT-2W-EMLED	120-277	—	LED 4000K	53W	RECESS	
D	6" LED DOWNLIGHT	PHILIPS LIGHTOLIER	O6L20N2VBZ10V/O6L1520DL40MCCD WVB	120-277	—	LED 4000K	25W	RECESS	
D1	5" LED DOWNLIGHT	PHILIPS LIGHTOLIER	L5RAZ10UVA/L5R10840VA/L5RDD	120-277	—	LED 4000K	13W	RECESS	
D2	3" LED DOWNLIGHT	PHILIPS LIGHTOLIER	L3NZ10U/L308835F/L3RDD	120-277	—	LED 3500K	12W	RECESS	
D3	4" EXTERIOR LED DOWNLIGHT	KIRLIN	LRR-06018-43-41K-31-46	120-277	—	LED 4100K	11W	RECESS	
F	4' LED STAIRWELL FIXTURE WITH OCCUPANCY SENSOR	WILLIAMS	SLF-4-L90/840-HIA-OCCWFS-505-DIM-UNV	120-277	—	LED 4000K	92W	SURFACE	
FE	4' LED STAIRWELL FIXTURE WITH OCCUPANCY SENSOR AND EMERGENCY BATTERY	WILLIAMS	SLF-4-L90/840-HIA-EM/10W-OCCWFS-505-DIM-UNV	120-277	—	LED 4000K	92W	SURFACE	
G	4' ENCLOSED LED FIXTURE	BEGHELLI	BS100LED-4-HT-50W-WT41-120-277-CH	120-277	—	LED 4100K	46.2W	CHAIN HUNG	
GE	4' ENCLOSED LED FIXTURE WITH EMERGENCY BATTERY	BEGHELLI	BS100LED-4-SA-50W-WT41-120-277-CH	120-277	—	LED 4100K	46.2W	CHAIN HUNG	
G1	4' ENCLOSED LED FIXTURE	BEGHELLI	BS100LED-4-HT-80W-WT41-120-277-CH	120-277	—	LED 4100K	68.7W	CHAIN HUNG	
G1E	4' ENCLOSED LED FIXTURE WITH EMERGENCY BATTERY	BEGHELLI	BS100LED-4-SA-80W-WT41-120-277-CH	120-277	—	LED 4100K	68.7W	CHAIN HUNG	
H	4' LED STRIP WITH WIRE GUARD	WILLIAMS	75-4-L30/840-WG-7514-LED-DIM-UNV	120-277	—	LED 4000K	23W	SURFACE	
H1	4' LED STRIP WITH WIRE GUARD	WILLIAMS	75-4-L50/840-WG-7514-LED-DIM-UNV	120-277	—	LED 4000K	44W	SURFACE	
P	4' LED ELEVATOR PIT LIGHT	BEGHELLI	BS100LED-4-HT-80W-WT41-120-277	120-277	—	LED 4100K	68.7W	WALL SURFACE	
SA	LED SITE LIGHT FIXTURE	PHILIPS GARDOO	ECF-1-4-215LA-641A-NW-UNV-XXX-IS-PTF	120-277	—	LED 4000K	211W	25' MTG. HT DIRECT BURIAL CONCRETE POLE	COLOR TO BE SELECTED BY ARCHITECT
SA1	LED SITE LIGHT FIXTURE	PHILIPS GARDOO	ECF-1-4-215LA-641A-NW-UNV-XXX-PTF	120-277	—	LED 4000K	211W	25' MTG. HT DIRECT BURIAL CONCRETE POLE	COLOR TO BE SELECTED BY ARCHITECT
W	LED WALL SCONCE	PHILIPS GARDOO	161-CWL-4-220LA-9670-NW-UNIV-XXX	120-277	—	LED 4000K	210W	WALL SURFACE AT 25' AFG	COLOR TO BE SELECTED BY ARCHITECT
W1	LED WALL SCONCE	PHILIPS GARDOO	121-4-75LA-NW-UNIV-XXX	120-277	—	LED 4000K	72W	WALL SURFACE AT 12.5' AFG	COLOR TO BE SELECTED BY ARCHITECT
W2	LED UP/DOWN WALL SCONCE	V2 LIGHTING	Q4LU-NV 1W-13834025-20834041-XX	120-277	—	LED 4000K	31.2W	WALL SURFACE	COLOR TO BE SELECTED BY ARCHITECT
W3	EXTERIOR LED WALL LIGHT	V2 LIGHTING	Q3LS-NVW-138340-XX	120-277	—	LED 4000K	11.7W	WALL SURFACE	COLOR TO BE SELECTED BY ARCHITECT
X	EXIT SIGN	BEGHELLI	CRV-SA-LR-1/2-C/M-S-AL	120-277	—	LED	2W	UNIVERSAL	

- NOTES:
- PROVIDE ELECTRONIC BALLAST FOR ALL FLUORESCENT LAMPED FIXTURES.
 - MINIMUM FLUORESCENT LAMP COLOR TEMPERATURE SHALL BE 3500K.
 - VERIFY BALLAST REQUIREMENTS FOR ALL FLUORESCENT FIXTURES. PROVIDE ELECTRONIC DIMMING BALLASTS FOR SPECIFIC FIXTURES INDICATED WITH DIMMER CONTROL.
 - VERIFY ALL FIXTURE SELECTIONS PRIOR TO PURCHASE WITH OWNER/ARCHITECT.

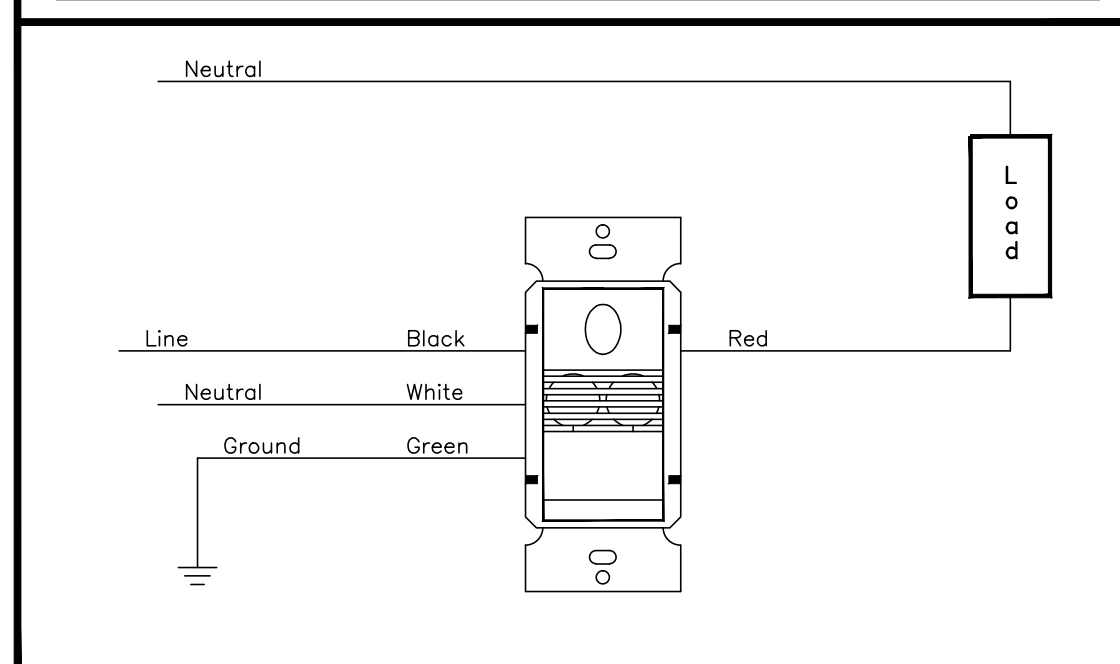
LIGHTING CONTROL SYMBOL LEGEND

	7-DAY FULL YEAR LIGHTING CONTROL PANEL WITH ASTRONOMICAL TIME CLOCK - 16 RELAY ILC (APRINTICE ILS-16)
	WALL MOUNTED DUAL TECH OCCUPANCY SENSOR WATTSTOPPER DSW-100
	WALL MOUNTED 2-RELAY OCCUPANCY SENSOR CAPABLE OF SWITCHING SEPARATE CIRCUITS, DUAL TECH WATTSTOPPER DSW-200
	WALL MOUNTED 3-WAY OCCUPANCY SENSOR LINE VOLTAGE, DUAL TECH WATTSTOPPER DSW-301
	SWITCH
	3-WAY SWITCH
	4-WAY SWITCH
	DIMMER SWITCH
	LIGHTING CONTROL OVERRIDE SWITCH WITH PILOT LIGHT, 4 HOUR MAX TIME DELAY - 1 BUTTON ILC (LS-02-1)
	CEILING MOUNTED STANDARD RANGE OCCUPANCY SENSOR LINE VOLTAGE WATTSTOPPER DT-355
	CEILING MOUNTED STANDARD RANGE OCCUPANCY SENSOR LOW VOLTAGE, PROVIDE POWER PACK(S) AS REQUIRED WATTSTOPPER DT-300
	CEILING MOUNTED HALLWAY SENSOR, 90° X 10° COVERAGE LOW VOLTAGE, PROVIDE POWER PACK(S) AS REQUIRED WATTSTOPPER W2000-H
	CORNER MOUNTED OCCUPANCY SENSOR LOW VOLTAGE, PROVIDE POWER PACK(S) AS REQUIRED WATTSTOPPER DT-200
	EXHAUST FAN
NOTE: ALL SYMBOLS MAY NOT BE USED FOR THIS PROJECT.	

WATTSTOPPER DT-355 OCCUPANCY SENSOR



WATTSTOPPER DW-100 WALL SWITCH/OCCUPANCY SENSOR



LIGHTING NOTES

- ALL EXIT, EMERGENCY, AND BATTERY PACKS IN FLUORESCENT FIXTURES TO BE WIRED AHEAD OF CONTROL SWITCH.
- ALL WALL MOUNTED EMERGENCY LIGHT FIXTURES SHALL BE MOUNTED AT HEIGHTS INDICATED ON THE PLANS.
- ALL DIMMER SWITCHES SHALL HAVE A PRESET MINIMUM RATING OF 10 KW.
- ALL FIXTURE COUNTS, SELECTIONS, AND EXACT LOCATIONS MUST BE VERIFIED WITH OWNER/ARCHITECT PRIOR TO PURCHASE. (CONSIDER ALL LIGHT FIXTURE MODEL NUMBERS, FINISH COLORS AND ELECTRICAL REQUIREMENTS BEFORE ORDERING AND INSTALLATION)
- CONTRACTOR TO VERIFY IF ANY LOW VOLTAGE LIGHT FIXTURES REQUIRE STEP-DOWN TRANSFORMERS, QUANTITY AND LOCATION TO BE FIELD VERIFIED PRIOR TO CONSTRUCTION. PROVIDE ALL TRANSFORMERS AND INCLUDE IN BID.
- ALL FIXTURES TO HAVE UL CERTIFICATION.
- ALL EXISTING AND NEW LUMINAIRES SHALL COMPLY WITH SECTION 4.10.130(G) DISCONNECTING MEANS OF THE NEC.
- CONTRACTOR TO PROVIDE LUMINAIRES TO CONFORM TO ENERGY CODE, THERMAL ENVELOPE RATINGS.

ENERGY COMPLIANCE NOTE

- AN AUTOMATIC TIME CLOCK SHALL BE THE MEANS OF LIGHTING SHUTOFF PER FBC ENERGY CONSERVATION SECTION FOR ALL AREAS WHERE OCCUPANCY SENSORS ARE NOT USED, AND IT SHALL CONTAIN AN ASTRONOMICAL TIMECLOCK TO SHUT THE TENANT SPACE DOWN AT A SCHEDULED TIME OF DAY.
- ALL LIGHT CIRCUITS THAT ARE NOT WIRED THROUGH THE ASTRONOMICAL TIME CLOCK SHALL BE CONTROLLED BY OCCUPANCY SENSORS WHICH MUST TURN LIGHTS OFF WITHIN 30 MINUTES AFTER AN OCCUPANT LEAVES THE SPACE.
- RECORD DRAWINGS OF INSTALLATION AND OPERATION MANUALS ARE TO BE PROVIDED TO THE OWNER AS SPECIFIED IN FLORIDA BUILDING CODE ENERGY CONSERVATION SECTION.

New Building For:
OPPORTUNITY INC.
 EARLY LEARNING CENTER
 4171 Westgate Avenue
 Palm Beach County, Florida

THESE DRAWINGS ARE FOR THE EXCLUSIVE USE OF GLIDDEN SPINA + PARTNERS, INC. AND MAY NOT BE DUPLICATED, REPRODUCED OR USED IN ANY MANNER WITHOUT THE EXPRESS WRITTEN CONSENT OF GLIDDEN SPINA + PARTNERS, INC. ALL RIGHTS RESERVED.

Revisions:

Project no: 15435
 Date: 09.09.16
 Drawn by: RB/SKJS
 Project Architect: BJ

FAC
CONSULTING

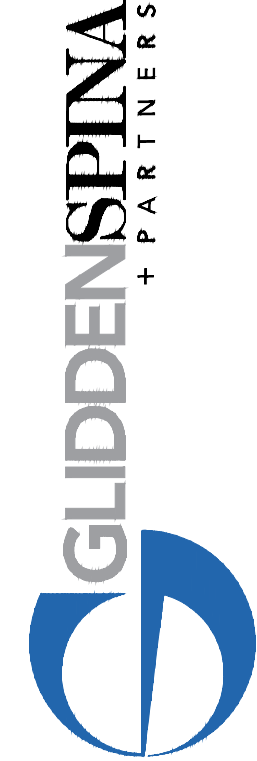
700 WEST HILLSBORO BLVD. - BLDG. #1, SUITE 204
 DEERFIELD BEACH, FLORIDA 33441
 TEL: (561) 391-9292 FAX: (561) 391-9898
 CERTIFICATE OF AUTHORIZATION NO. 28107
 LIRELLA IARFATE, P.E. LICENSE #73122
 STEPHEN F. ROLLIN, P.E. LICENSE #36428
 DONALD H. AUSTIN, JR., PE LICENSE #60651
 JASON BARBER, P.E. LICENSE #73050
 E-MAIL: INFO@FACCONSULTING.COM
 DESIGNED BY: BJ/SKJS PM: BJ P/N 15434

E0.2

09.09.16 BID/PERMIT

LIGHTING FIXTURES SCHEDULE, LEGEND, & NOTES

207 SIXTH STREET
 WEST PALM BEACH, FLORIDA 33401
 PH: 561.684.6844 • gliddenspina.com
 FL Lic. # AB000297



Architecture • Interior Design
 Keith M. Spina # AB03419

PRIOR TO SUBMITTING THE BID, THE CONTRACTOR SHALL FIELD VERIFY ALL EXISTING CONDITIONS AND INFORM THE ARCHITECT AND THE ENGINEER OF ANY DISCREPANCY BETWEEN THESE DOCUMENTS AND THE EXISTING CONDITIONS AND SHALL INCLUDE IN THE BID TO CORRECT THE SAME AS DIRECTED. THE ENGINEER AND THE ARCHITECT, ARE NOT RESPONSIBLE FOR ANY ADDITIONAL COSTS RESULTING FROM VERIFIABLE EXISTING CONDITIONS DISCOVERED AFTER CONTRACT HAS BEEN AWARDED. NO CHANGES SHALL BE MADE TO THESE PLANS WITHOUT PRIOR APPROVAL FROM THE ENGINEER OF RECORD. ALL CHANGES SHALL BE SUBMITTED FOR REVIEW PRIOR TO INSTALLATION. NOT FOR BID UNTIL PERMIT HAS BEEN ISSUED.