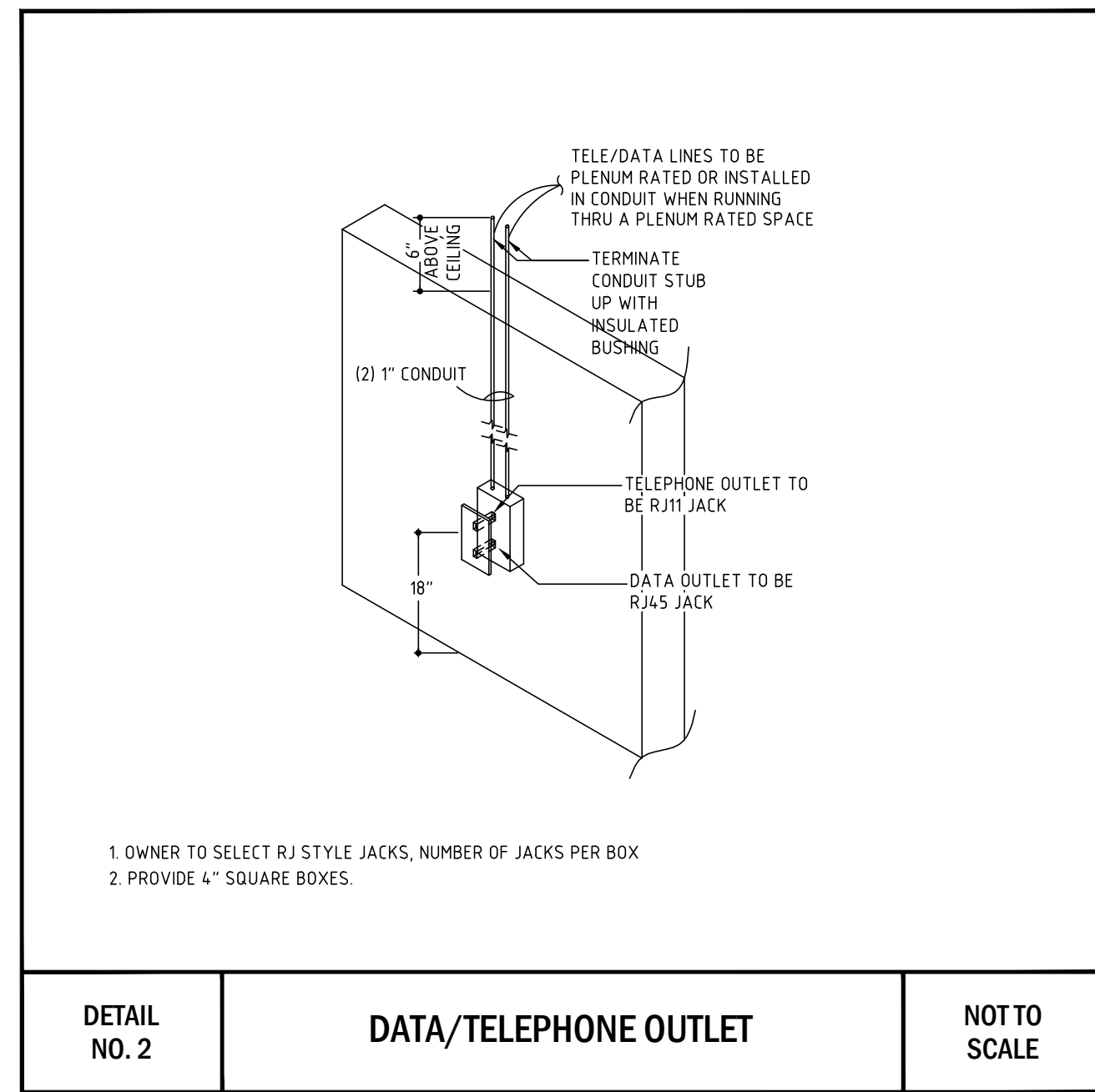
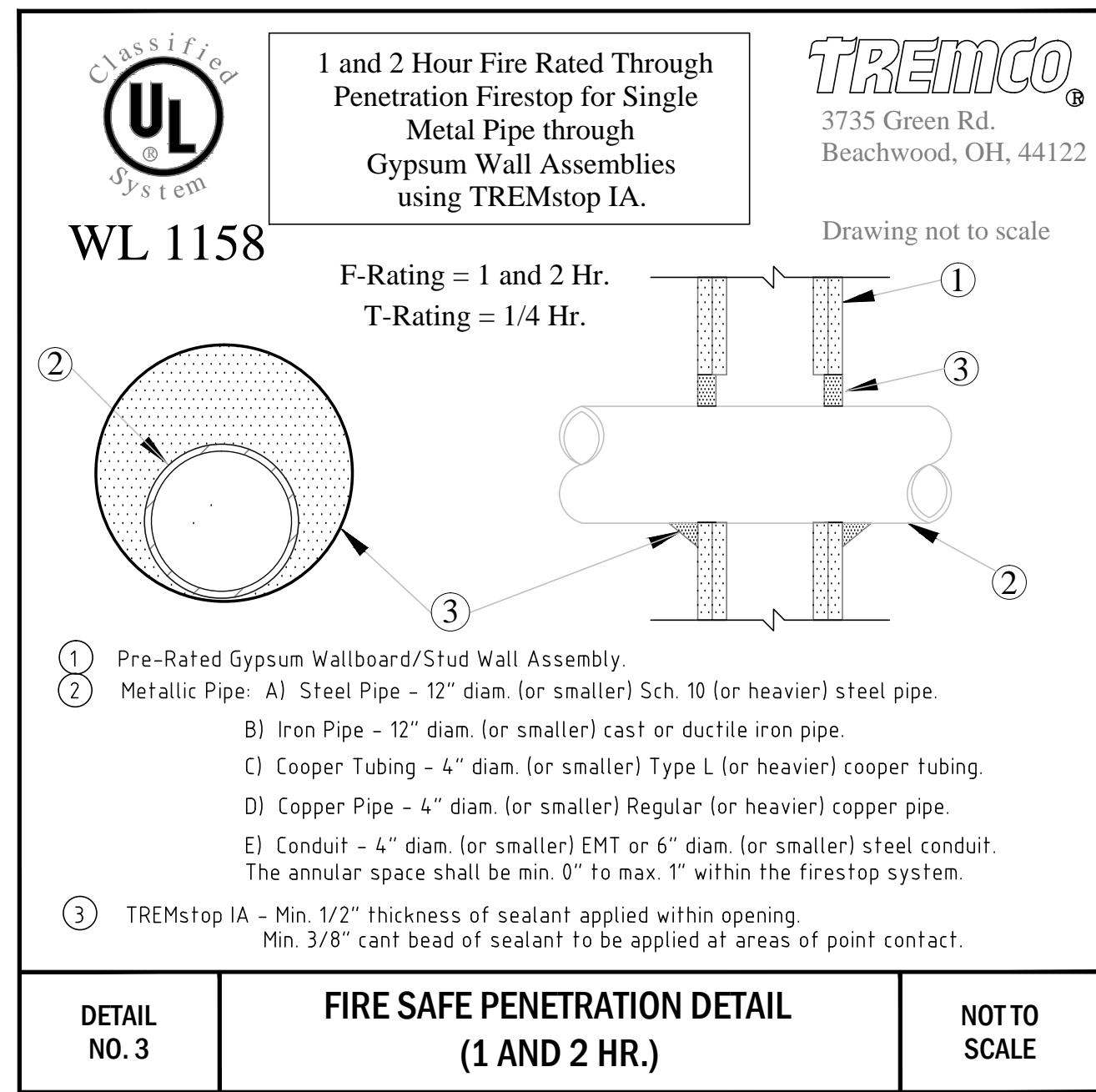


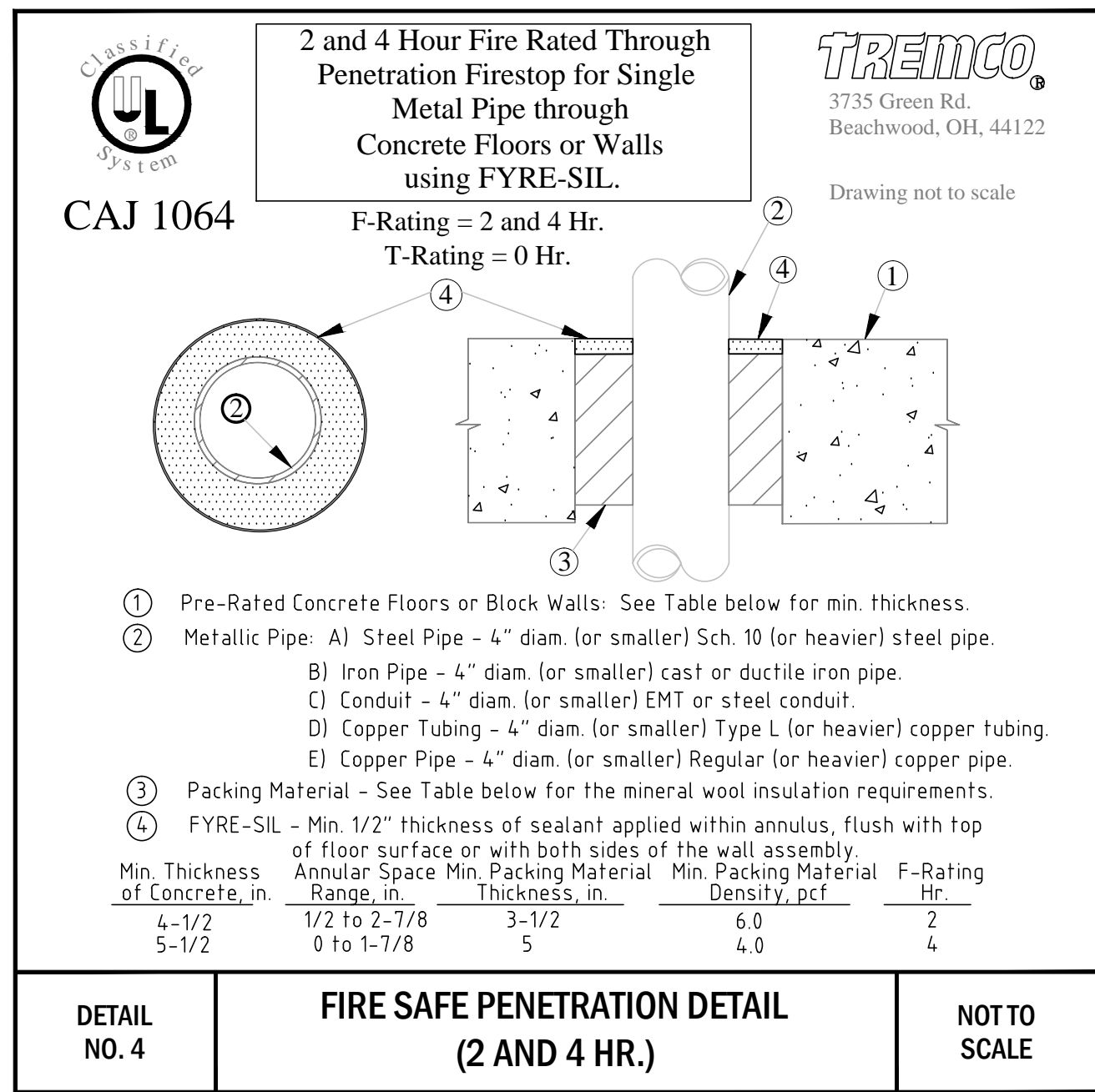
DETAIL NO. 1 TELEPHONE RISER NOT TO SCALE



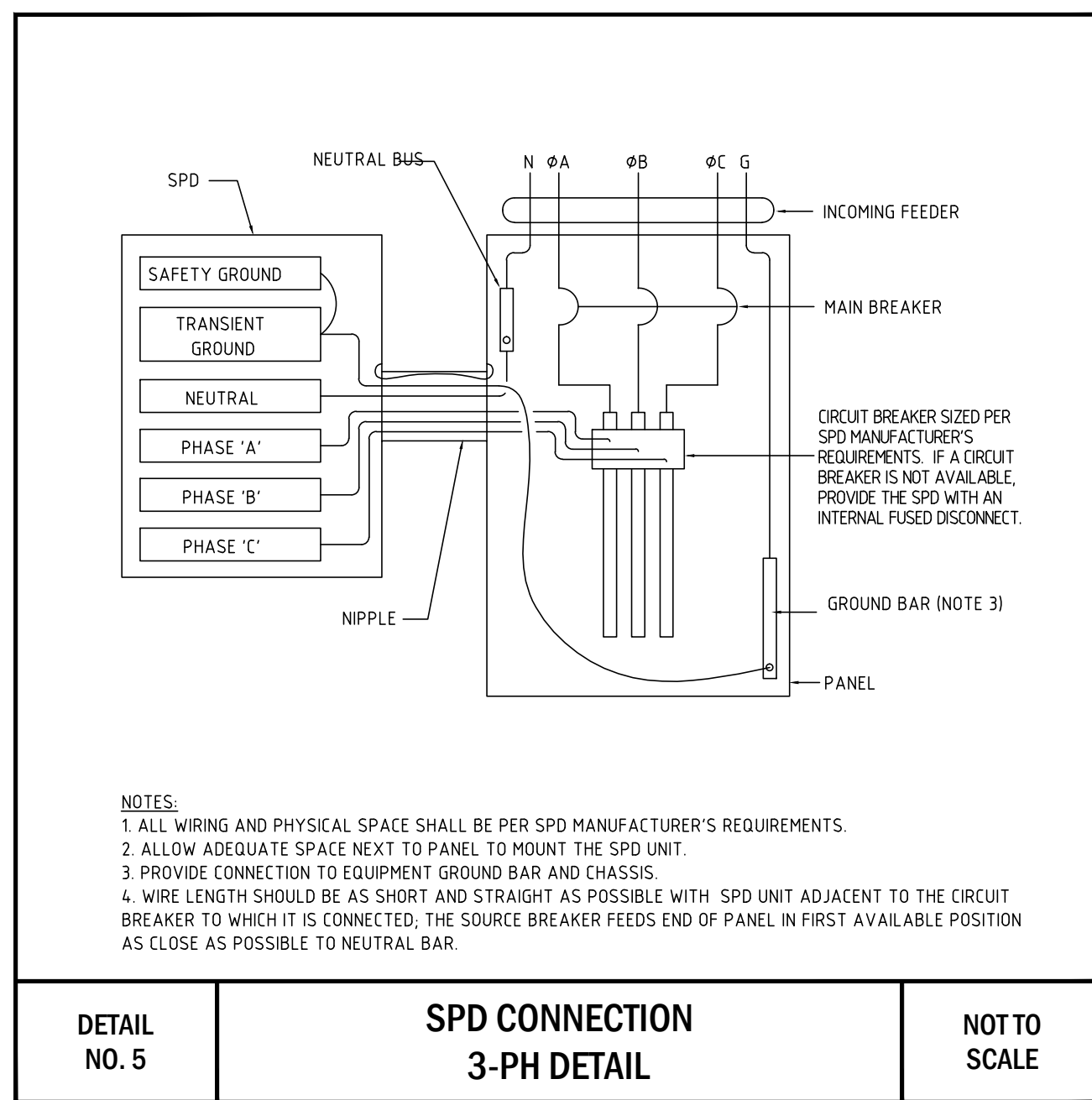
DETAIL NO. 2 DATA/TELEPHONE OUTLET NOT TO SCALE



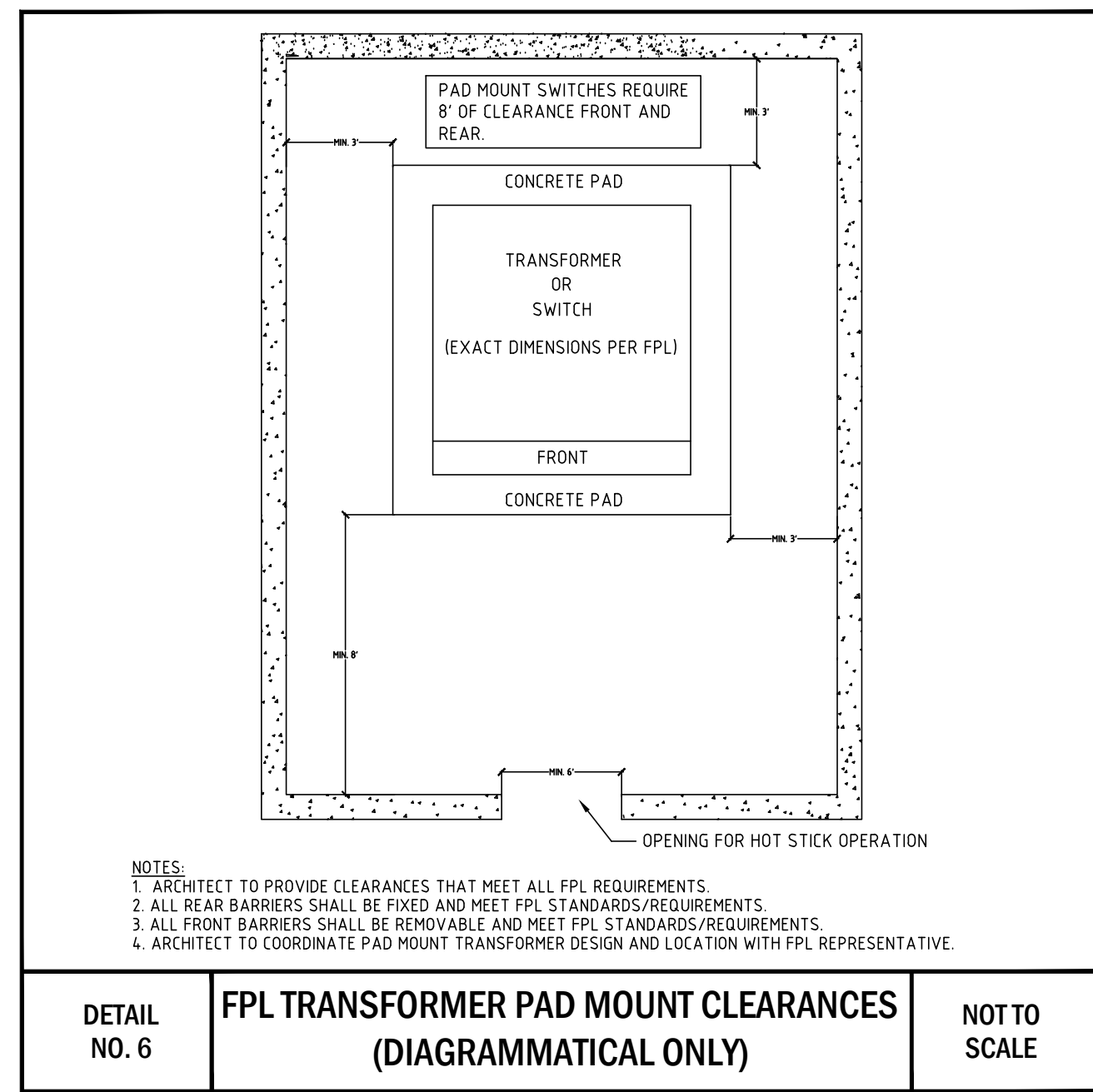
DETAIL NO. 3 FIRE SAFE PENETRATION DETAIL (1 AND 2 HR.) NOT TO SCALE



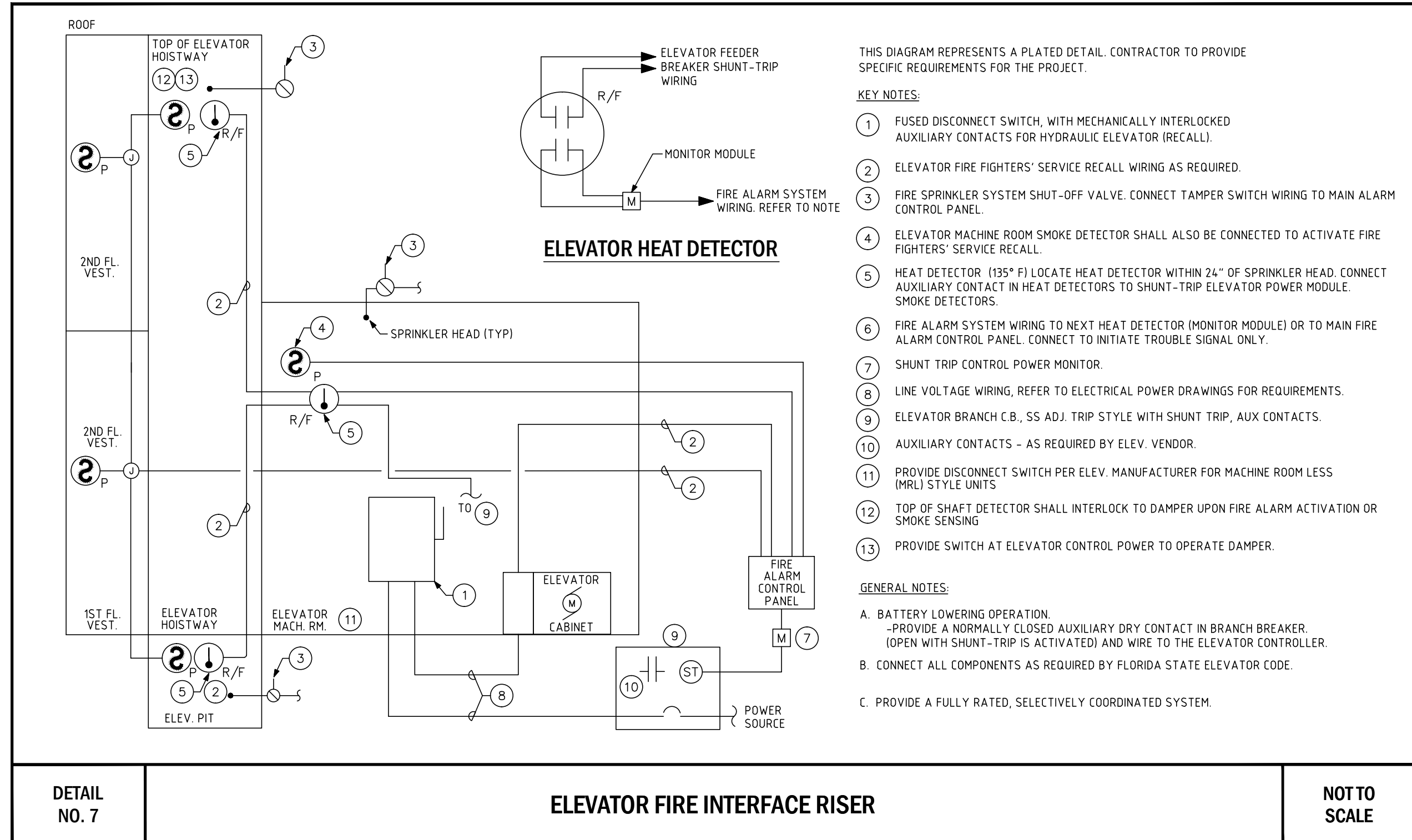
DETAIL NO. 4 FIRE SAFE PENETRATION DETAIL (2 AND 4 HR.) NOT TO SCALE



DETAIL NO. 5 SPD CONNECTION 3-PH DETAIL NOT TO SCALE



DETAIL NO. 6 FPL TRANSFORMER PAD MOUNT CLEARANCES (DIAGRAMMATICAL ONLY) NOT TO SCALE



DETAIL NO. 7 ELEVATOR FIRE INTERFACE RISER NOT TO SCALE

SPD BASIS OF DESIGN MANUFACTURER IS: POWER SYSTEM INNOVATION CORPORATION (PSI). APPROVED MANUFACTURERS ARE: JOSLYN, PSI, CURRENT TECHNOLOGY, SQ-D, AND ACT COMMUNICATIONS. MUST COMPLY WITH UL 1449, 3RD OR CURRENT ADDITION AND MUST BE RATED PER MODE.

ALL MAINS - 200 KA, DISTRIBUTION 100KA, BRANCH 50KA, (ALL MODE PROTECTION)

CONTRACTOR MUST CONTACT SPD MANUFACTURER PRIOR TO START OF THE PROJECT AND OBTAIN ALL REQUIREMENTS. VENDOR MAY ADD TO, AND/OR DELETE FROM, THE NOTED EQUIPMENT SHOWN ON THE PLANS.

CONTRACTOR MUST FULLY COMPLY WITH VENDOR REQUIREMENTS AND RECOMMENDATIONS.

CONTRACTOR SHALL OBTAIN A SEPARATE PRICE FROM VENDOR AND SHALL INCLUDE IT IN THE BID.

CONTRACTOR SHALL OBTAIN SERVICES OF A QUALIFIED AGENCY TO MEASURE, VERIFY, AND CERTIFY THE GROUND SYSTEM. PROVIDE REPORT TO OWNER AND ARCHITECT.

BEFORE SUBMITTING THE BID, THE CONTRACTOR SHALL FIELD VERIFY ALL EXISTING CONDITIONS AND INFORM THE ARCHITECT AND THE ENGINEER OF ANY DISCREPANCY BETWEEN THESE DOCUMENTS AND THE EXISTING CONDITIONS AND SHALL INCLUDE IN THE BID TO CORRECT THE SAME AS DIRECTED. THE ENGINEER AND THE ARCHITECT, ARE NOT RESPONSIBLE FOR ANY ADDITIONAL COSTS RESULTING FROM VERIFIABLE EXISTING CONDITIONS DISCOVERED AFTER CONTRACT HAS BEEN AWARDED. NO CHANGES SHALL BE MADE TO THESE PLANS WITHOUT PRIOR APPROVAL FROM THE ENGINEER OF RECORD. ALL CHANGES SHALL BE SUBMITTED FOR REVIEW PRIOR TO INSTALLATION. NOT FOR BID UNTIL PERMIT HAS BEEN ISSUED.

PERMIT / BID SET: 09/07/16

700 WEST HILLSBORO BLVD. - BLDG. #1, SUITE 204 DEERFIELD BEACH, FLORIDA 33441  
 TEL: (561) 391-9292 FAX: (561) 391-9898  
 CERTIFICATE OF AUTHORIZATION NO. 28107  
 LIRELLA IARFATE, P.E. LICENSE #73122  
 STEPHEN F. ROLLIN, P.E. LICENSE #36428  
 DONALD H. AUSTIN, JR., PE LICENSE #60551  
 JASON BARBER, P.E. LICENSE #73050  
 E-MAIL: INFO@FAECONSULTING.COM  
 DESIGNED BY: BJ/SK/JUS PM: BJ P/N 15434

207 SIXTH STREET  
 WEST PALM BEACH, FLORIDA 33401  
 PH: 561.684.6844 • gliddenspina.com  
 FL Lic. # AB000397

GLIDDENSPINA + PARTNERS  
 Architecture • Interior Design  
 Keith M. Spina # AB03419

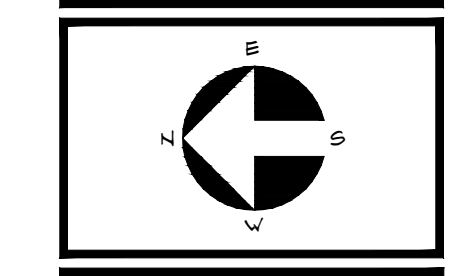
New Building For:  
**OPPORTUNITY INC.**  
 EARLY LEARNING CENTER  
 4171 Westgate Avenue  
 Palm Beach County, Florida

THESE DRAWINGS ARE FOR THE EXCLUSIVE USE OF GLIDDEN SPINA + PARTNERS, INC. AND MAY NOT BE DUPLICATED, REPRODUCED OR USED IN ANY MANNER WITHOUT THE EXPRESS WRITTEN CONSENT OF GLIDDEN SPINA + PARTNERS, INC. ALL RIGHTS RESERVED.

Revisions:

--	--

Project no: 15435  
 Date: 09.09.16  
 Drawn by: RB/SK/JUS  
 Project Architect: BJ



ELECTRICAL DETAILS

**E5.1**

09.09.16 BID/PERMIT