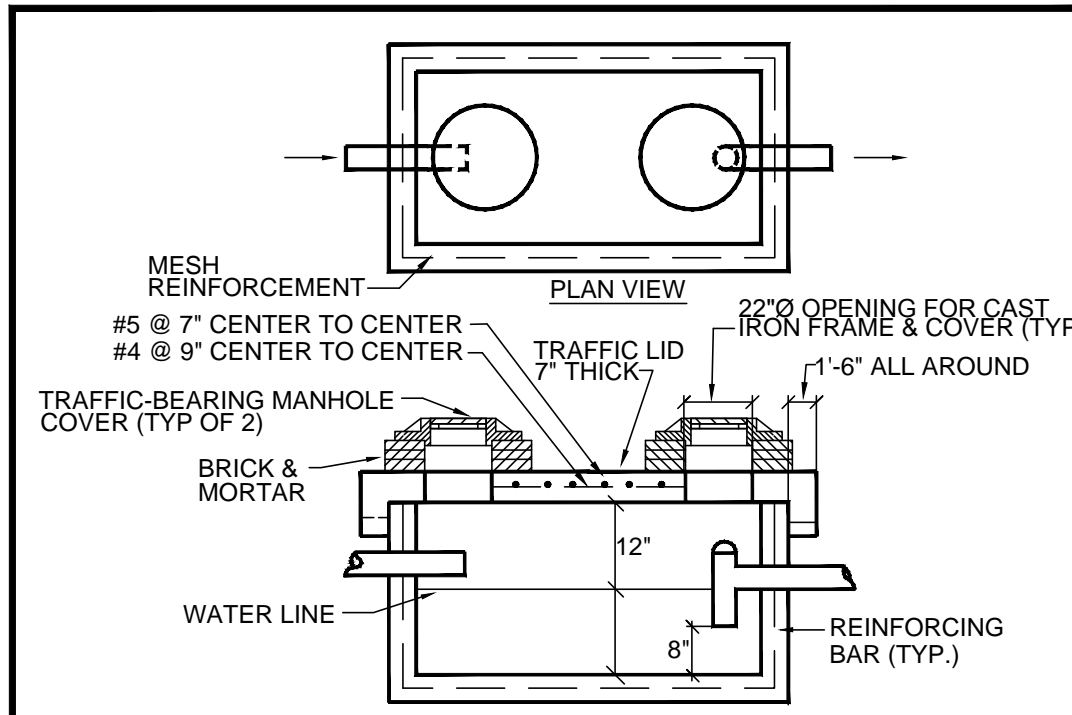


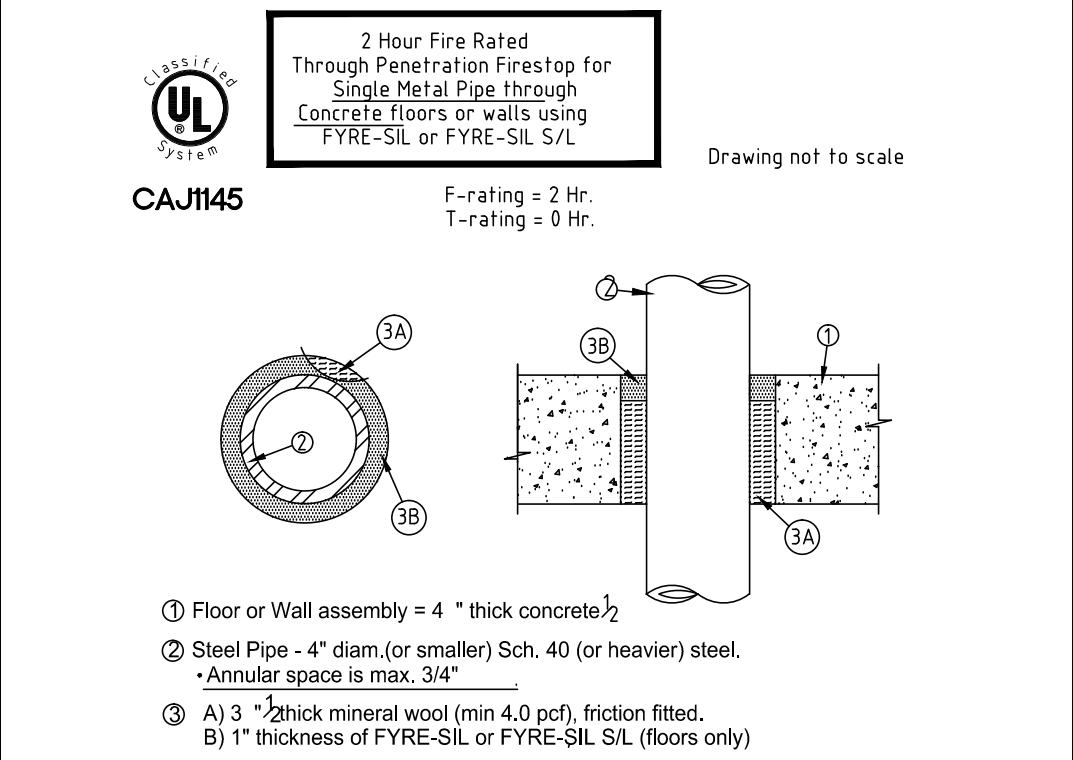
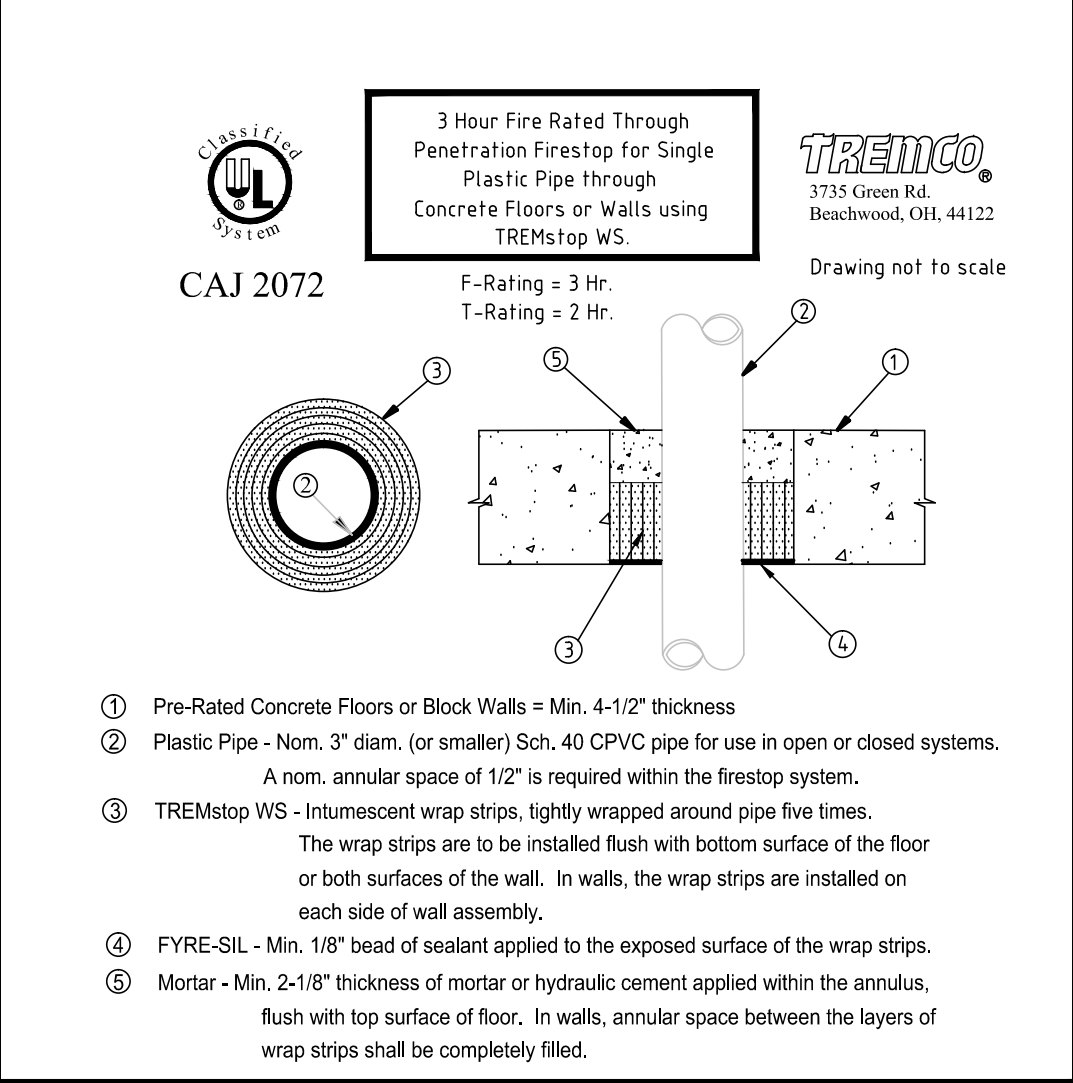
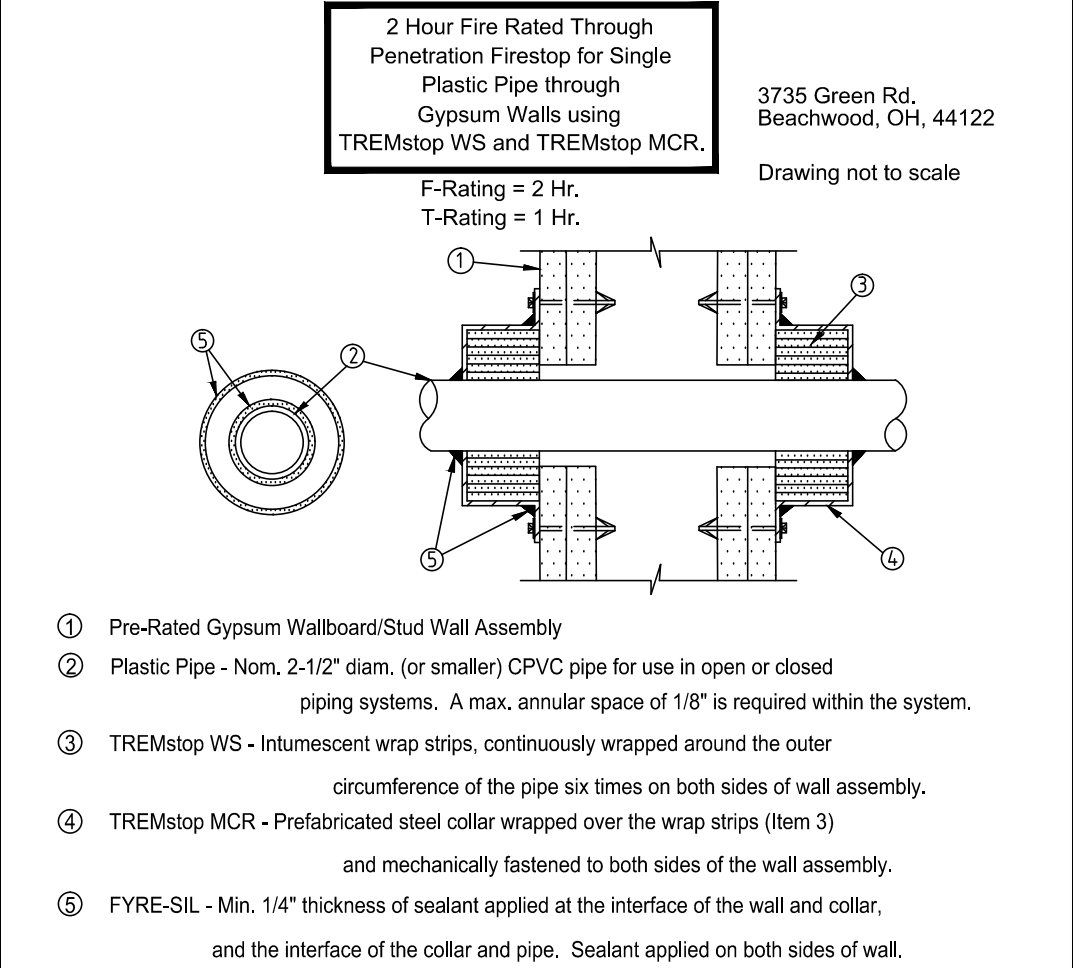
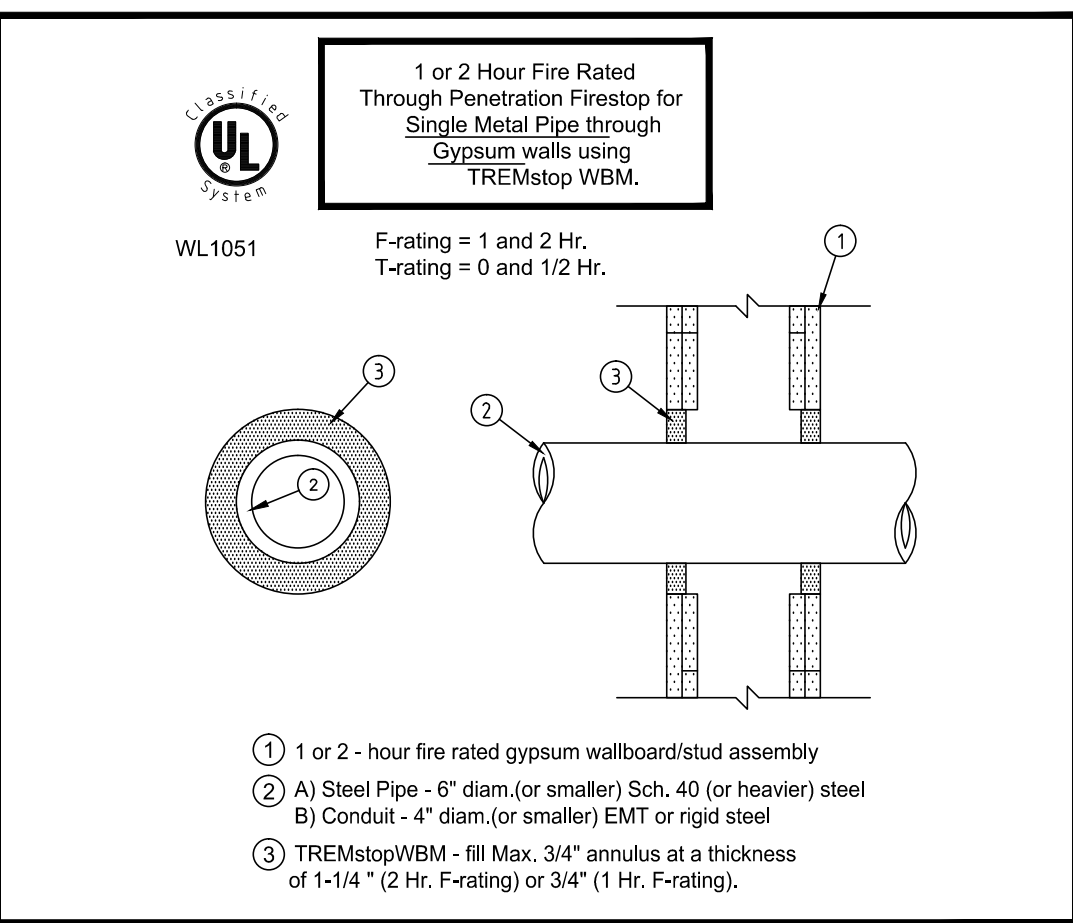
DETAIL NO. 1 PIPE SUPPORT DETAILS NOT TO SCALE



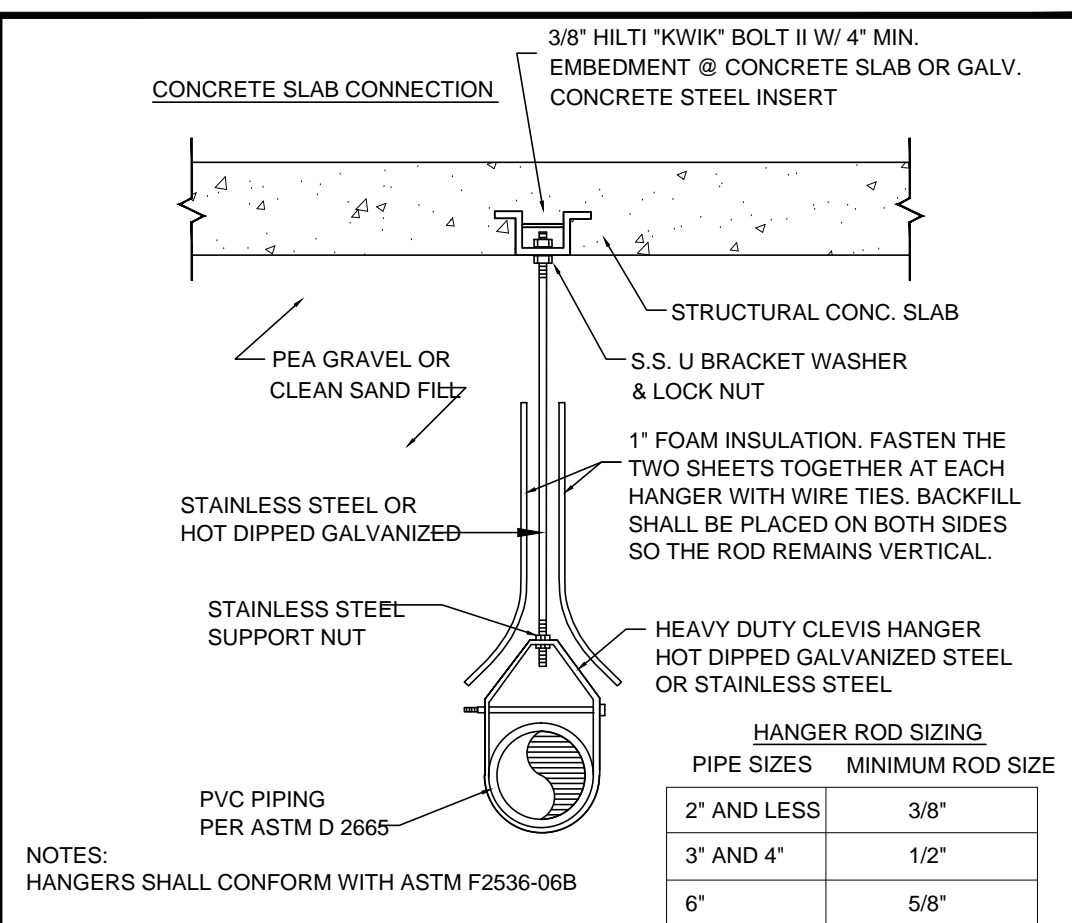
NOTES:

- 1) INLET INVERT SHALL DISCHARGE A MINIMUM OF 2 1/2' ABOVE THE LIQUID LEVEL LINE AND OUTLET PIPE SHALL HAVE A TEE WITH A MINIMUM DIAMETER OF 4" TO WITHIN 8" OF THE BOTTOM OF THE TANK.
- 2) MANHOLES SHALL BE PROVIDED OVER THE INLET AND OUTLET OF EACH INTERCEPTOR AND BE BROUGHT TO GRADE. MINIMUM SIZE OF MANHOLES SHALL BE 24".
- 3) LID TYPE:
 - A) REGULAR - FOUR-INCH THICK REINFORCED CONCRETE OR APPROVED EQUIVALENT.
 - B) TRAFFIC BEARING - SIX-INCH THICK REINFORCED CONCRETE OR APPROVED EQUIVALENT.
- 4) A TWO-WAY CLEANOUT TEE, BROUGHT TO GRADE, SHALL BE INSTALLED ENTERING AND LEAVING EACH GREASE INTERCEPTOR.
- 5) CLEANOUTS INSTALLED IN VEHICULAR TRAFFIC PAVED AREAS SHALL BE PROTECTED BY USE OF A CLEANOUT BOX WITH METAL LID.
- 6) WALLS SHALL BE A MINIMUM OF 3" THICK AND BOTTOM SHALL BE A MINIMUM OF 4" THICK REINFORCED CONCRETE.
- 7) TANK MUST BE TRAFFIC BEARING.
- 8) PROVIDE SHOP DRAWINGS OF GREASE INTERCEPTOR WHICH SHALL BE SIGNED AND SEALED BY THE CONTRACTORS DELEGATED FLORIDA PROFESSIONAL ENGINEER.
- 9) SIZE: SIZE OF THE GREASE TRAP SHALL BE BASED UPON THE ANTICIPATED FLOW RATE, WATER TEMPERATURE AND GREASE CONCENTRATION. ADEQUATE DETENTION TIME SHALL BE PROVIDED TO ALLOW THE GREASE TO BE DEPOSITED WITHIN THE GREASE TRAP BEFORE ENTERING THE CITY WASTEWATER SYSTEM. **MINIMUM CAPACITY SIZE: 750 GALLONS. MAXIMUM CAPACITY SIZE: 1250 GALLONS.** FOR SIZE APPROVAL, PLEASE CONTACT THE UTILITIES DEPARTMENT, ENVIRONMENTS COMPLIANCE (HOLLY MCGRATH LABORATORY) SUPERVISOR. (561) 822-2271 EMAIL: HMCGRATH@WPS.ORG
- 10) ALTERNATE MATERIALS AND DESIGN SHALL BE SUBMITTED FOR INDIVIDUAL APPROVAL.

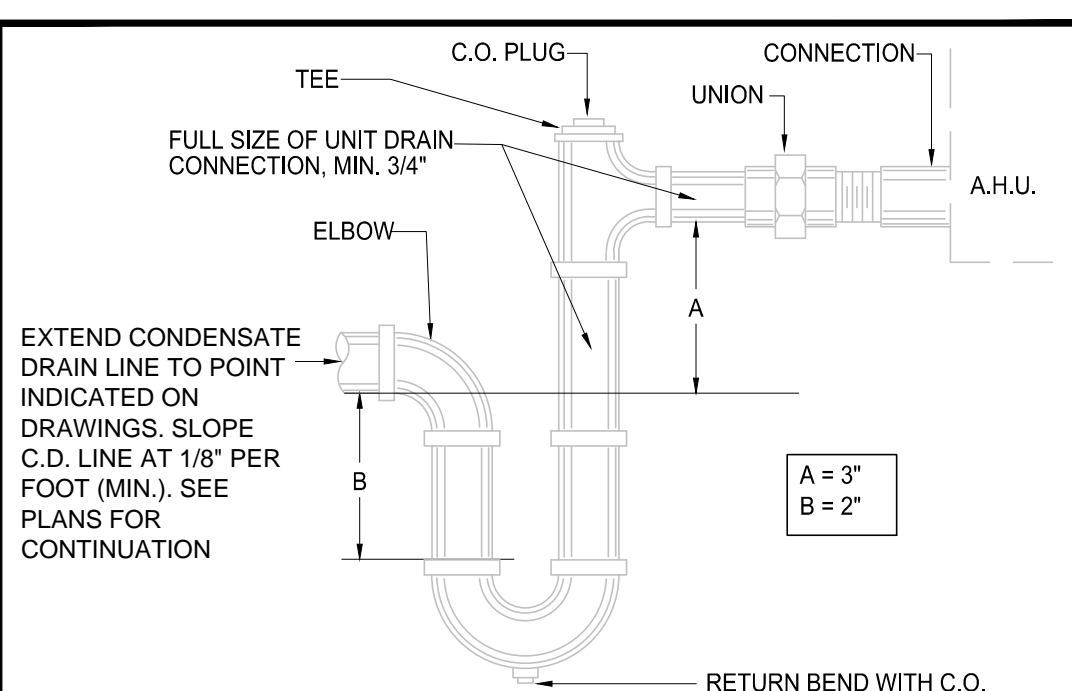
DETAIL NO. 2 750 GALLON GREASE INTERCEPTOR NOT TO SCALE



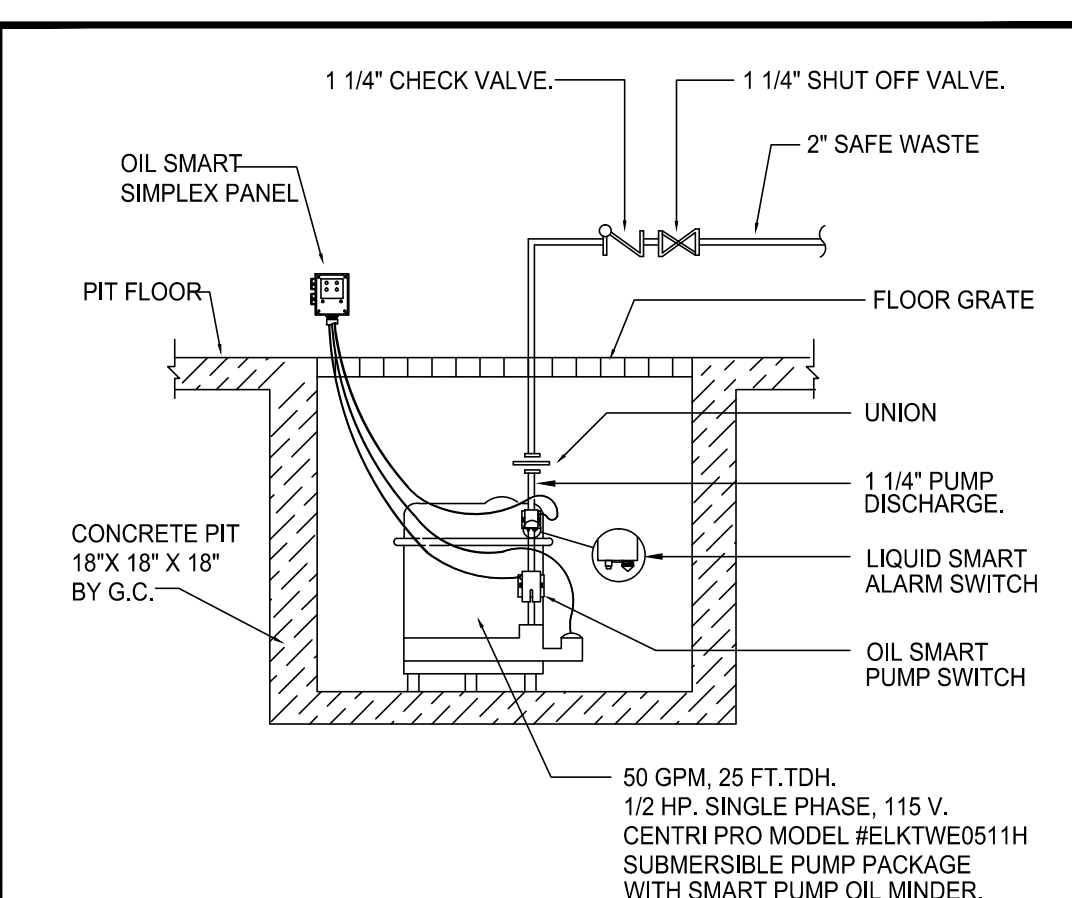
DETAIL NO. 3 FIRE PENETRATION DETAILS NOT TO SCALE



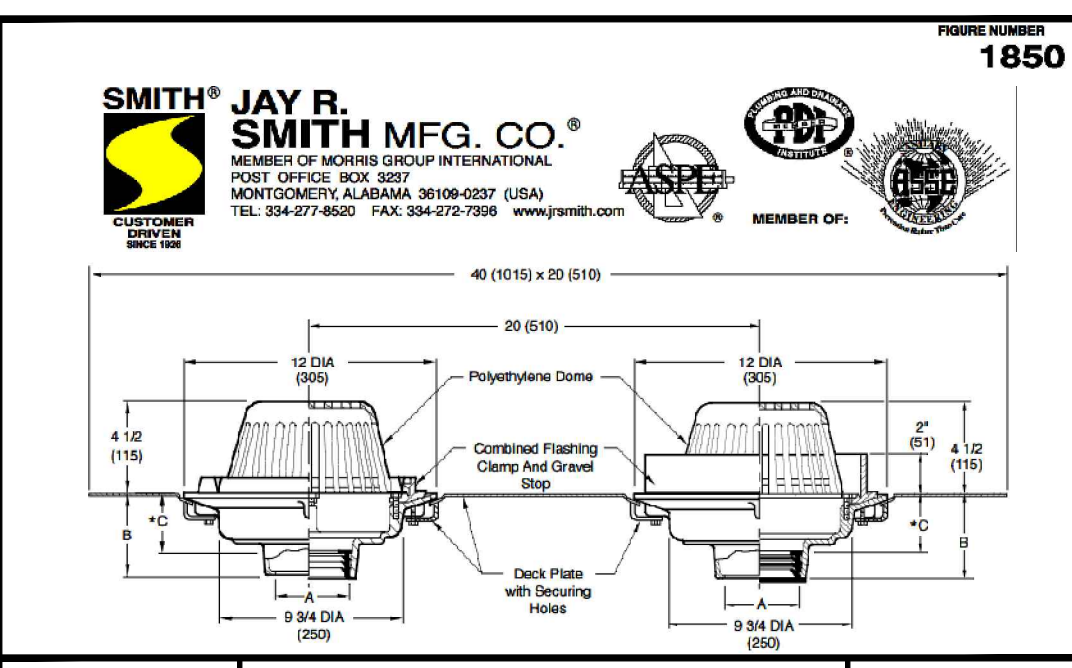
DETAIL NO. 4 PIPE HANGER UNDER STRUCTURAL SLAB NOT TO SCALE



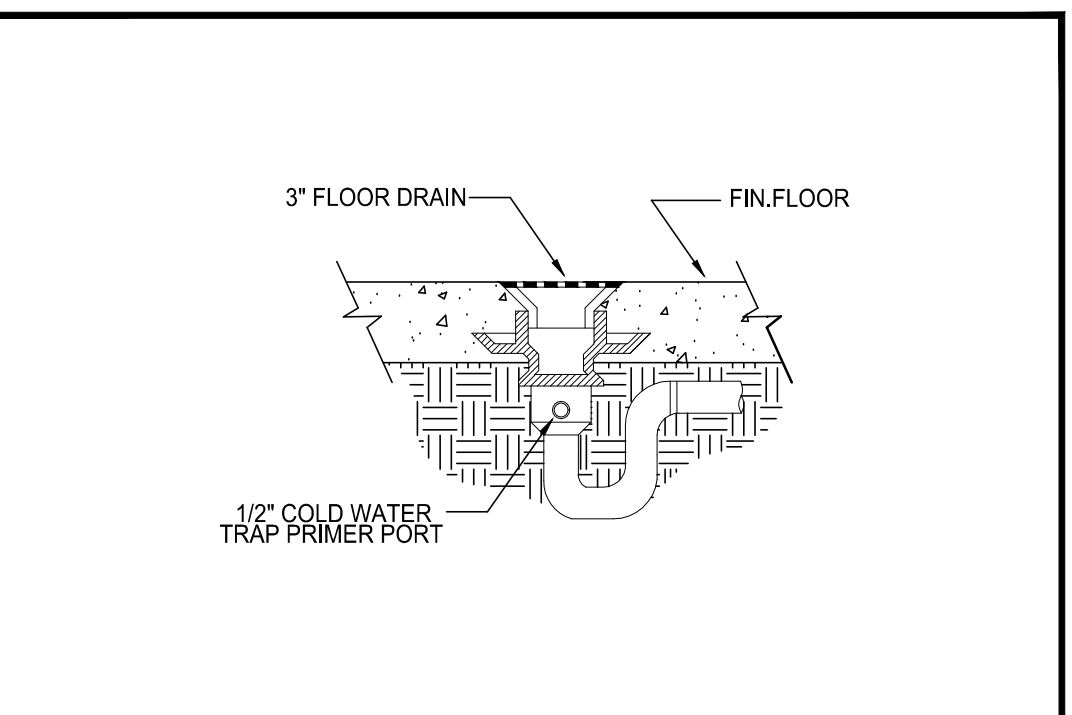
DETAIL NO. 5 CONDENSATE DRAIN TRAP NOT TO SCALE



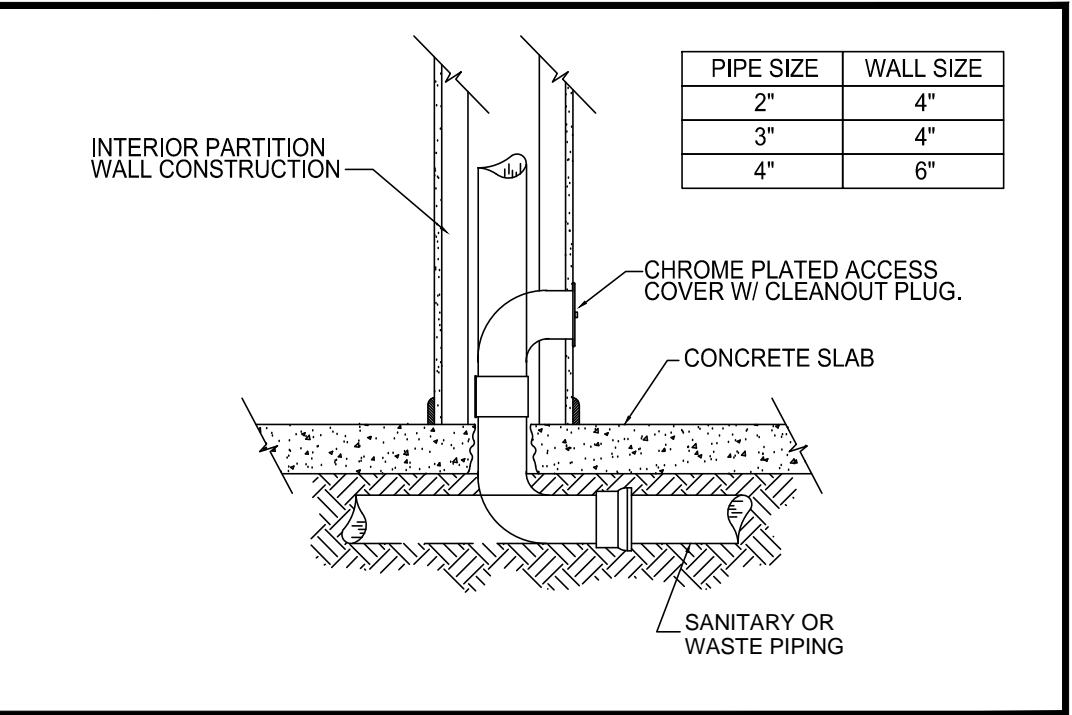
DETAIL NO. 6 ELEVATOR SUMP PUMP NOT TO SCALE



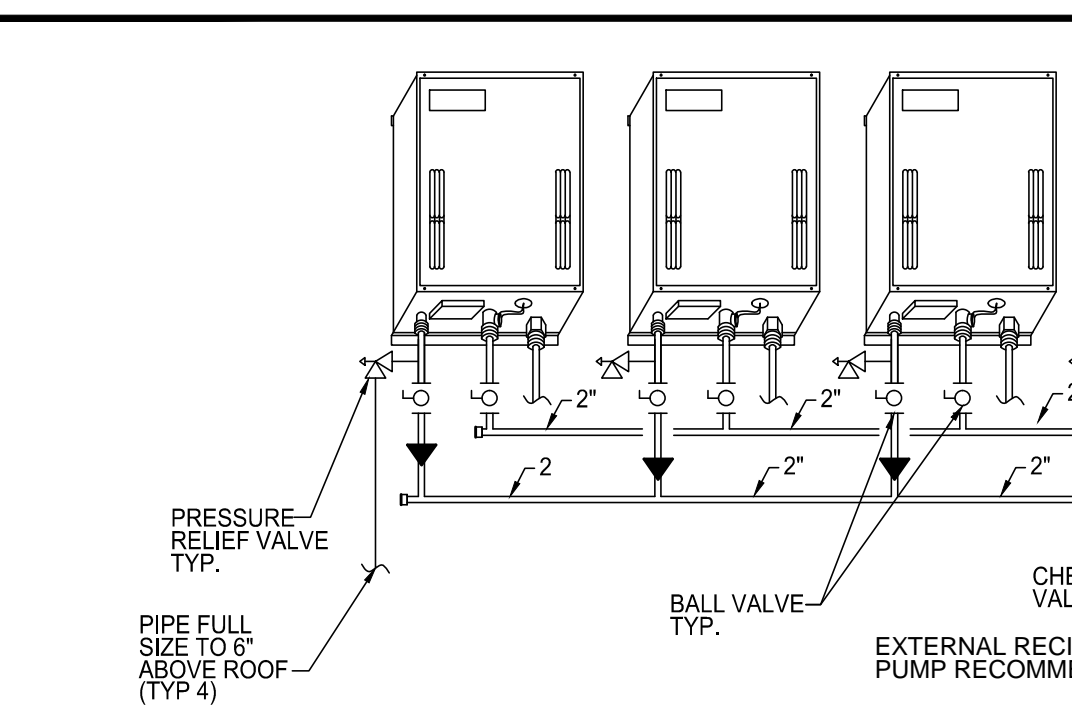
DETAIL NO. 7 ROOF DRAIN WITH EMERGENCY OVERFLOW DRAIN NOT TO SCALE



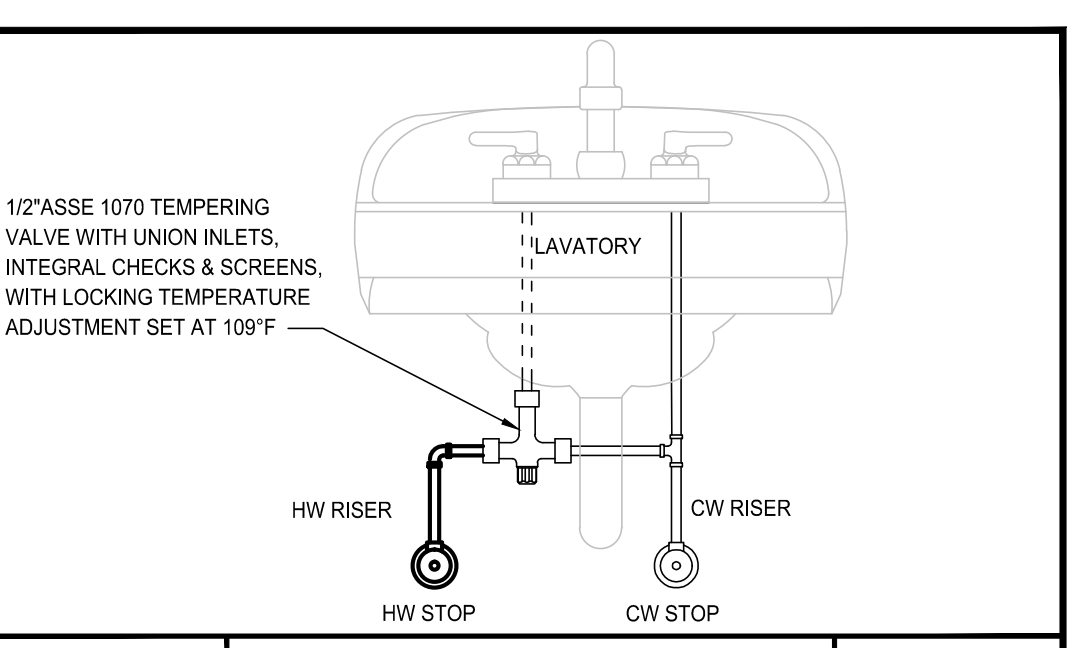
DETAIL NO. 8 FLOOR DRAIN WITH TRAP PRIMER NOT TO SCALE



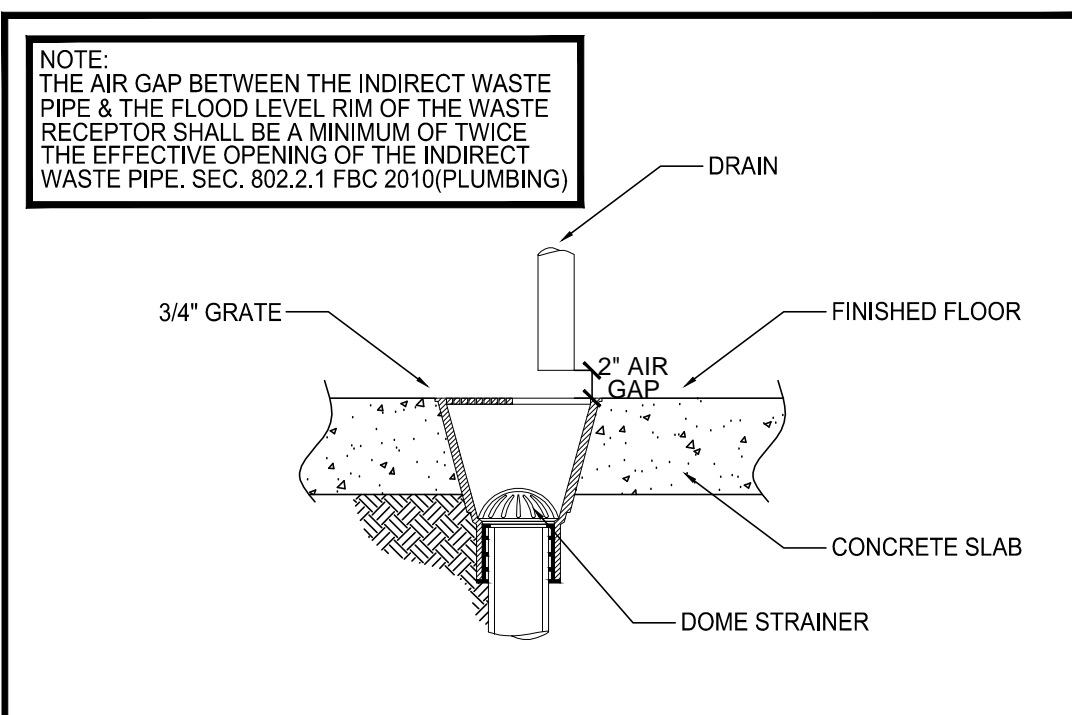
DETAIL NO. 9 WALL CLEAN-OUT NOT TO SCALE



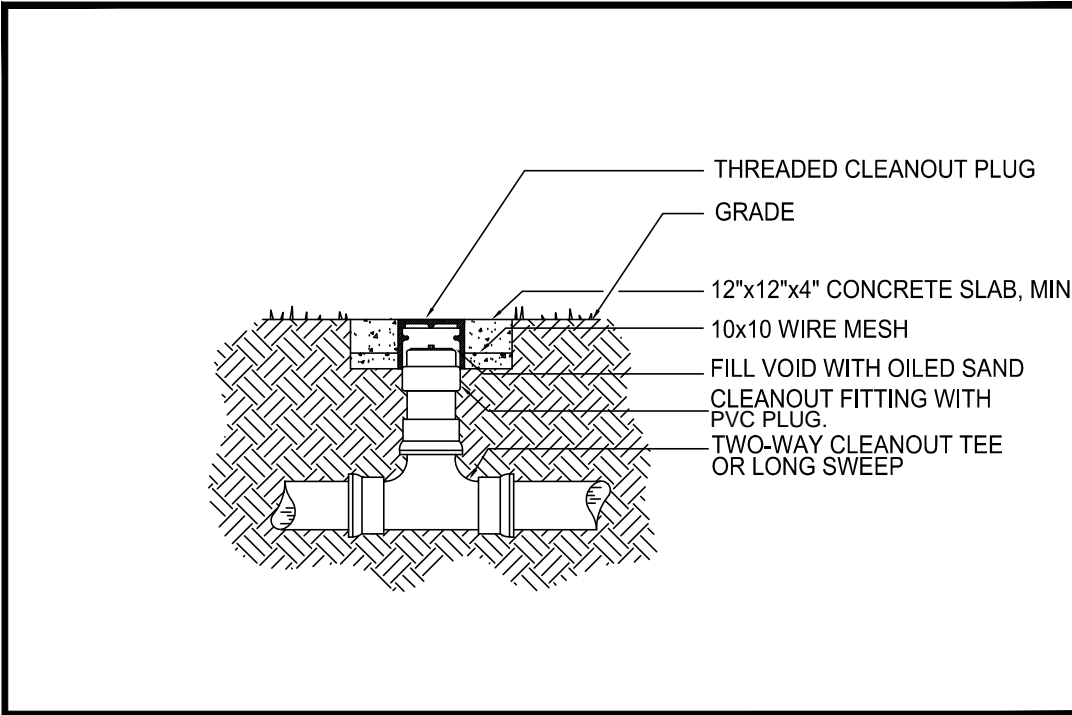
DETAIL NO. 10 MULTI-TANKLESS WATER HEATER SYSTEM WITH EXTERNAL RECIRCULATING PUMP NOT TO SCALE



DETAIL NO. 11 LAVATORY TEMPERING VALVE DETAIL NOT TO SCALE



DETAIL NO. 12 FLOOR SINK NOT TO SCALE



DETAIL NO. 13 CLEAN-OUT TO GRADE (CTG) NOT TO SCALE

BEFORE SUBMITTING THE BID, THE CONTRACTOR SHALL FIELD VERIFY ALL EXISTING CONDITIONS AND INFORM THE ARCHITECT AND THE ENGINEER OF ANY DISCREPANCY BETWEEN THESE DOCUMENTS AND THE EXISTING CONDITIONS AND SHALL INCLUDE IN THE BID TO CORRECT THE SAME AS DIRECTED. THE ENGINEER AND THE ARCHITECT, ARE NOT RESPONSIBLE FOR ANY ADDITIONAL COSTS RESULTING FROM VERIFIABLE EXISTING CONDITIONS DISCOVERED AFTER CONTRACT HAS BEEN AWARDED. NO CHANGES SHALL BE MADE TO THESE PLANS WITHOUT PRIOR APPROVAL FROM THE ENGINEER OF RECORD. ALL CHANGES SHALL BE SUBMITTED FOR REVIEW PRIOR TO INSTALLATION. NOT FOR BID UNTIL PERMIT HAS BEEN ISSUED.

PERMIT / BID SET: 09/07/16

FAE CONSULTING

700 WEST HILLSBORO BLVD. - BLDG. #1, SUITE 204
DEERFIELD BEACH, FLORIDA 33441
TEL: (561) 391-9292 FAX: (561) 391-9898
CERTIFICATE OF AUTHORIZATION NO. 28107
LIRELLA IARFATE, P.E. LICENSE #73122
STEPHEN F. ROLLIN, P.E. LICENSE #36428
DONALD H. AUSTIN, JR., PE LICENSE #60551
JASON BARBER, P.E. LICENSE #73050
E-MAIL: INFO@FAECDENGINEERING.COM
DESIGNED BY: BJ/SK/JS PM: BJ P/N 15434

207 SIXTH STREET
WEST PALM BEACH, FLORIDA 33401
ph: 561.684.6844 • gliddenspina.com
FL Lic. # AB000397

GLIDDENSPINA + PARTNERS

Architecture • Interior Design
Keith M. Spina # AB13419

OPPORTUNITY INC.
EARLY LEARNING CENTER
4171 Westgate Avenue
Palm Beach County, Florida

PLUMBING DETAILS & SPECIFICATIONS

Project no: 15435
Date: 09.09.16
Drawn by: RB/SK/JS
Project Architect: BJ

Revisions:

P0.2

09.09.16 BID/PERMIT