

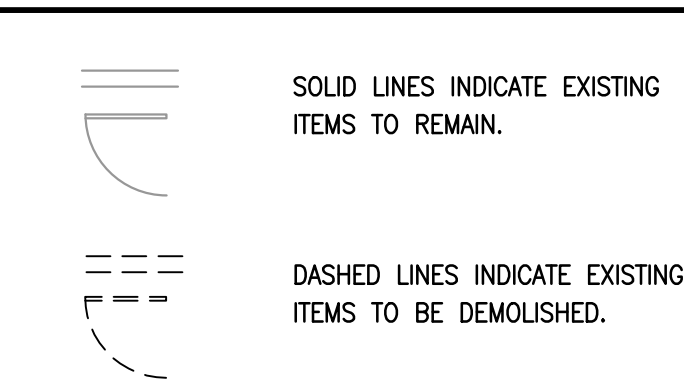
**FIELD VERIFICATION OF EXISTING CONDITIONS REQUIRED**

CONTRACTOR SHALL FIELD VERIFY ALL EXISTING CONDITIONS, AND DETERMINE WHAT ITEMS SHALL BE REUSED AND WHAT MUST BE REPLACED. ALSO, ALL ITEMS SHOWN ON DRAWINGS AS EXISTING SHALL BE FIELD VERIFIED FOR CONDITION, PROPER SIZE, FUNCTIONALITY, LOCATION AND CODE COMPLIANCE. ALL DISCREPANCIES SHALL BE REPORTED TO THE ARCHITECT PRIOR TO SUBMITTING A BID. THE BID SHALL INCLUDE ALL ITEMS REQUIRED FOR COMPLETE, PROPERLY FUNCTIONING BUILDING SYSTEMS.

**KEYNOTES**

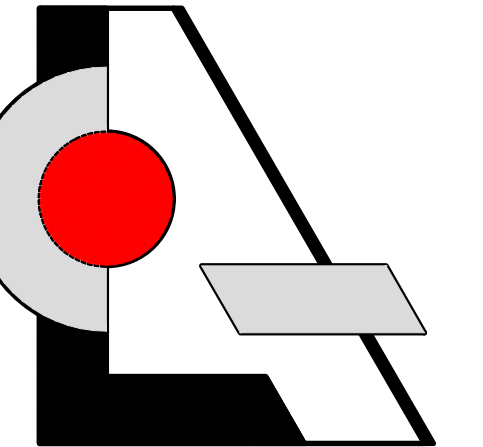
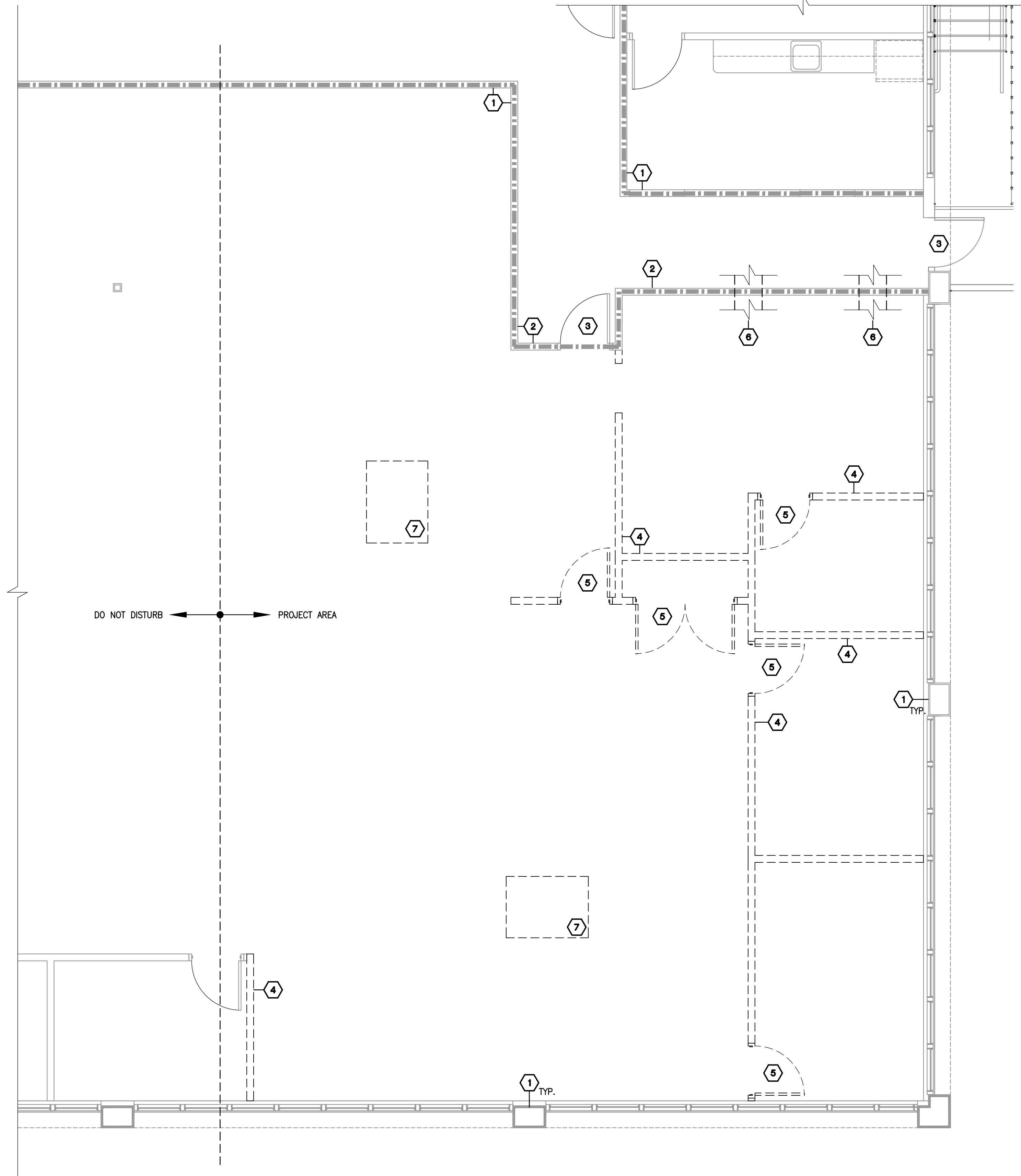
- ① EXISTING STRUCTURE TO REMAIN. PROTECT DURING DEMOLITION.
- ② EXISTING 1-HR PARTITION TO REMAIN
- ③ EXISTING DOOR TO REMAIN (45 MIN RATED IN CORRIDOR)
- ④ REMOVE EXISTING PARTITION
- ⑤ REMOVE EXISTING DOOR & FRAME
- ⑥ REMOVE EXISTING DUCTWORK & PENETRATIONS, CLOSE W/1-HR FIRE RATED CONSTRUCTION TO MATCH EXISTING
- ⑦ REMOVE EXISTING EQUIPMENT & DUCTWORK- TYPICAL IN PROJECT AREA

**DEMOLITION LEGEND**



**DEMOLITION NOTES**

1. PROVIDE NOTICE TO, AND ACQUIRE ALL NECESSARY PERMITS FROM AGENCIES HAVING JURISDICTION OVER DEMOLITION.
2. REMOVE EXISTING DOORS AND FRAMES AS SHOWN.
3. REMOVE EXIST. SUSPENDED CEILING & LIGHTS. DO NOT REMOVE OR COMPROMISE DRYWALL CEILING ABOVE ACOUSTICAL.
4. DETACH FROM CEILING AND TEMPORARILY ATTACH TO EXISTING STRUCTURE. ALL EMERGENCY AND EXIT LIGHTS, SPEAKERS, SMOKE DETECTORS (IF ANY).
5. REMOVE ALL FLOOR & WALL FINISHES. NOTIFY ARCHITECT UPON COMPLETION FOR INSPECTION.
6. REMOVE EXIST. HVAC AND ALL DUCTWORK.
7. REMOVE ALL LOW VOLTAGE WIRING & EXISTING OUTLETS UNLESS INDICATED OTHERWISE ON ELECTRICAL PLAN. IF DEVICE IS INDICATED TO BE REMOVED ON WALL INDICATED TO EXISTING - PULL WIRES OUT & INSTALL BLANK PLATE
8. PRIOR TO DEMOLITION VERIFY THAT ALL APPROPRIATE UTILITIES HAVE BEEN DISCONNECTED AND MADE SAFE.
9. REMOVE ALL WIRING FROM DEMOLISHED WALLS (BACK TO PANEL).
10. DO NOT REMOVE OR OTHERWISE COMPROMISE 1-HR RATED ROOF STRUCTURE PROTECTION MEMBRANE
11. CONTROL AS MUCH AS PRACTICABLE THE SPREAD OF DUST AND DIRT. OBSERVE ENVIRONMENTAL PROTECTION REGULATIONS.
12. PROMPTLY DISPOSE OF MATERIALS RESULTING FROM DEMOLITION OPERATIONS. DO NOT ALLOW MATERIALS TO ACCUMULATE ON SITE.
13. TRANSPORT MATERIALS RESULTING FROM DEMOLITION OPERATIONS AND LEGALLY DISPOSE OFF-SITE.
14. UPON COMPLETION OF DEMOLITION OPERATIONS, REMOVE ALL TOOLS AND EQUIPMENT AND DISPOSE OFF-SITE ALL REMAINING DEBRIS.
15. LEAVE ALL AREAS (INCLUDING EXTERIOR) NOT AFFECTED BY DEMOLITION, FREE OF DEBRIS.
16. RETURN STRUCTURES AND SURFACES TO REMAIN TO CONDITION EXISTING PRIOR TO COMMENCEMENT OF DEMOLITION.
17. PATCH AND FIX ALL EXISTING DAMAGED FLOOR AND WALL SURFACES. PREPARE WALL AND FLOOR SURFACES TO RECEIVE NEW FINISHES.
18. COORDINATE WITH BUILDING OWNER/MANAGER ROUTES FOR WORKMEN, LOCATION OF DUMPSTERS, PARKING FOR WORKMEN, AND TIMES OF ANY UTILITY DISRUPTIONS.



**LCA** AA 003432  
 Architecture, Inc.  
 1975 Sansbury's Way  
 Suite 108  
 West Palm Beach, FL 33411  
 Phone: (561) 493-4787  
 Fax: (561) 493-4786

REVISIONS / DATE

**Interior Improvement for  
 Advantone Florida, Inc.  
 855 SW 78th Ave. - Atrium "C" - Suite #202  
 Plantation, Florida 33324**

LESLAW A. CZACZYK AIA

AR 00015391

PROJ. NO. 16180.well

DESIGNED BY LAC

DRAWN BY MSB

DATE 07/25/16

SCALE AS SHOWN

**DEMO PLAN NOTES**

**DEMOLITION PLAN**  
 SCALE: 1/4"=1'-0"