

ROOM FINISH SCHEDULE										
Number	ROOM NAME	FLOOR	BASE		WALLS				CEILING	NOTES
			MATERIAL	FINISH	N	S	E	W	MATL	
101	WORKROOM	CPT	CPT	--	PAIN	PAIN	PAIN	PAIN	ACC-1	---
102	CONFERENCE	CPT	CPT	--	PAIN	PAIN	PAIN	PAIN	ACC-1	---
103	OFFICE	CPT	CPT	--	PAIN	PAIN	PAIN	PAIN	ACC-1	---
104	OFFICE	CPT	CPT	--	PAIN	PAIN	PAIN	PAIN	ACC-1	---
105	OFFICE	CPT	CPT	--	PAIN	PAIN	PAIN	PAIN	ACC-1	---
106	OFFICE	CPT	CPT	--	PAIN	PAIN	PAIN	PAIN	ACC-1	---

DOOR AND FRAME SCHEDULE												
MARK	STYLE	DOOR			MATERIAL	FINISH	FRAME		FIRE RATING LABEL	HARDW.		NOTES
		WD	HGT	THK			MATERIAL	FINISH		SET	KEY	
102	B1	3'-0"	7'-0"	1 3/4"	WOOD	PAIN	METAL	PAIN	NONE	OFFICE	NO	GLAZING
103	A1	3'-0"	7'-0"	1 3/4"	WOOD	PAIN	METAL	PAIN	NONE	OFFICE	YES	---
104	A1	3'-0"	7'-0"	1 3/4"	WOOD	PAIN	METAL	PAIN	NONE	OFFICE	YES	---
105	A1	3'-0"	7'-0"	1 3/4"	WOOD	PAIN	METAL	PAIN	NONE	OFFICE	YES	---
106	A1	3'-0"	7'-0"	1 3/4"	WOOD	PAIN	METAL	PAIN	NONE	OFFICE	YES	---

**FINISH NOTES**

ACC-1: 2'x2' SUSPENDED REGULAR ACOUSTICAL CEILING TILE, ARMSTRONG "3253 OPTIMA OPEN PLAN" WITH 15/16" GRID

CPT : CARPET PATCRAFT(SHAW) BROADLOOM - COLOR YOUR WORLD 10131 COLOR CHIPS 00522  
ALTERNATE1 : CARPET PATCRAFT(SHAW) CARPET TILE-ECO SOLUTION Q-EXPERIENCE 10291 - 00550

PAINT : LATEX, PRIMER & 2 COATS, SHERWIN-WILLIAMS OR EQUAL COLOR TO MATCH EXISTING  
WALLS: FLAT OR EGGSHELL  
DOOR & TRIM: SEMI-GLOSS

WINDOW TREATMENTS 2" HORIZONTAL BLINDS BY TRENDS FAUXWOOD. COLOR: WHITE OR OFF-WHITE.

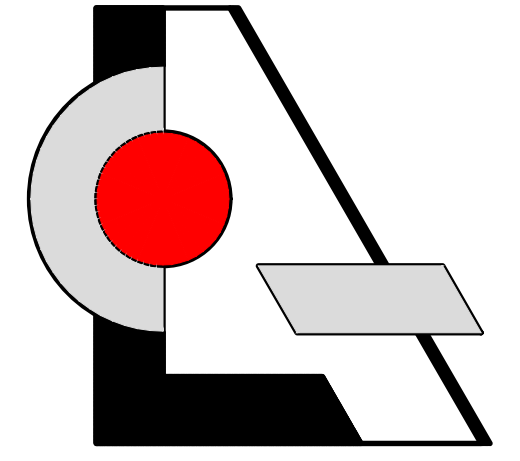
**FINISH REQUIREMENTS**

ALL WALL AND CEILING FINISHES IN PASSAGEWAYS SHALL CONFORM TO CLASS B REQUIREMENTS OF FBC.  
ALL WALL AND CEILING FINISHES IN ROOMS AND ENCLOSED SPACES SHALL CONFORM TO CLASS C REQUIREMENTS OF FBC.  
ALL FLOOR FINISHES SHALL CONFORM TO CLASS II REQUIREMENTS OF FBC.

**DOOR TYPES**

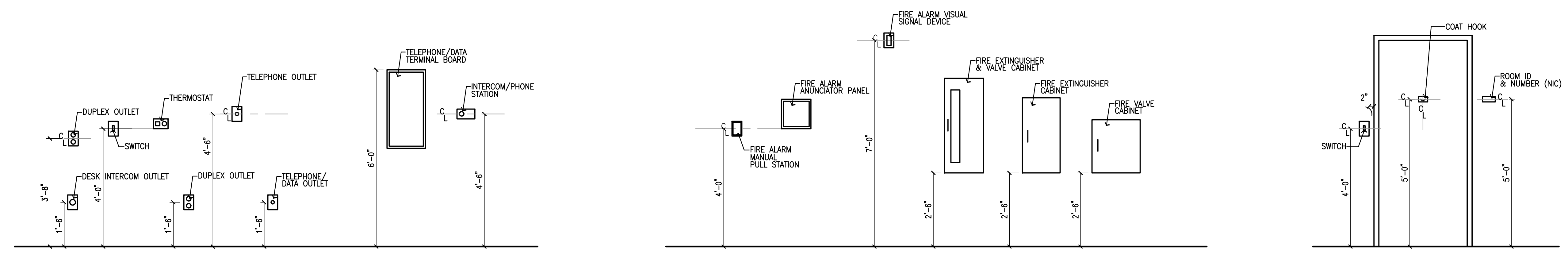
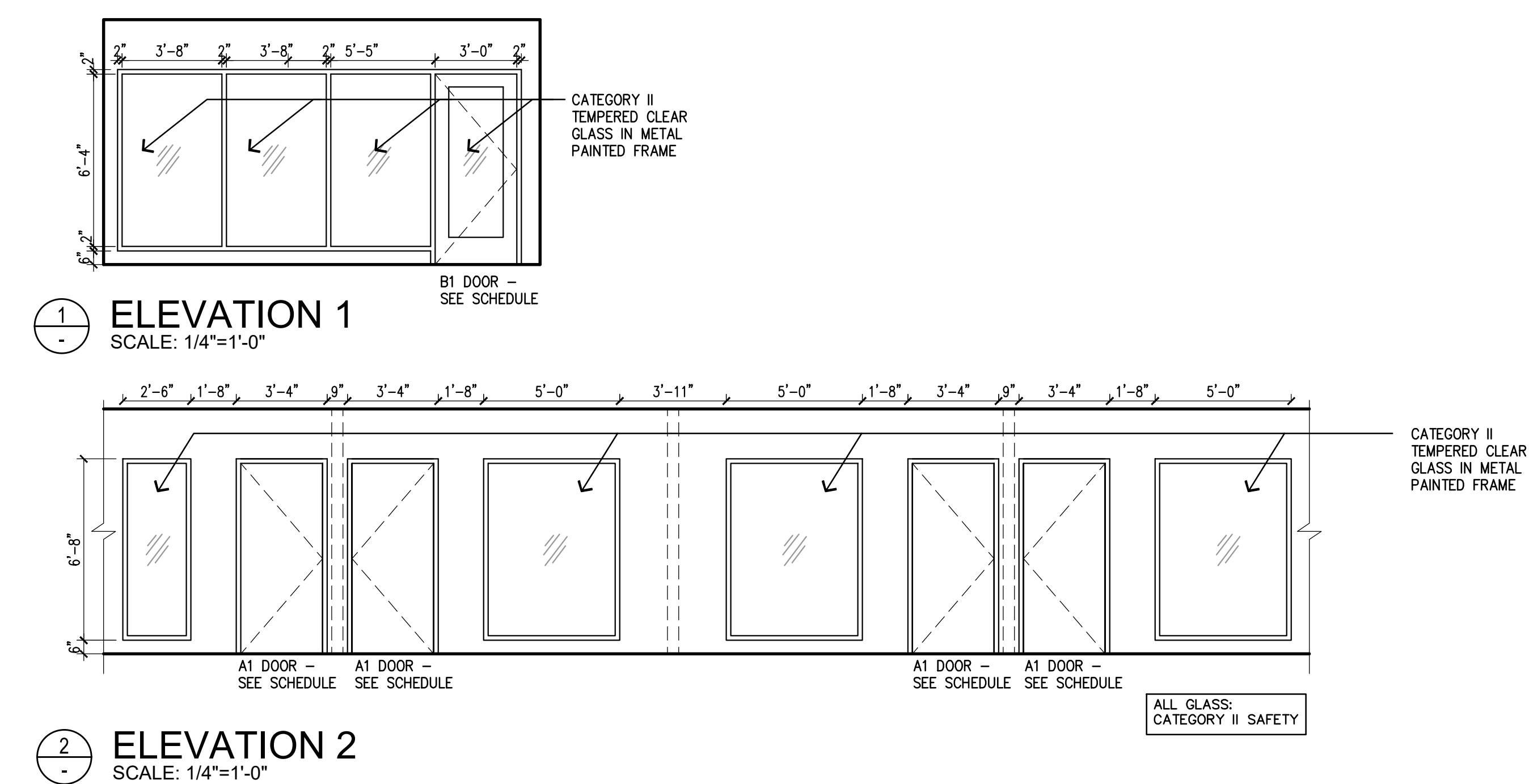
**GENERAL DOOR NOTES**

- ALL DOORS TO HAVE WALL MOUNTED OR FLOOR MOUNTED DOORSTOPS AS APPLICABLE.
- ALL METAL FRAME DOORS TO HAVE SILENCERS
- ALL DOOR HARDWARE TO COMPLY WITH NFPA 101 AND FBC, AND SHALL NOT REQUIRE KEY OPERATION IN DIRECTION OF EXIT.
- VERIFY KEYING SCHEDULE WITH CLIENT
- ALL DOOR HARDWARE SHALL BE ACCESSIBLE PER ADA AND FBC-ACCESSIBILITY.
- NO THRU-BOLTS FOR CLOSERS. DOORS TO BE ORDERED WITH SOLID STILE
- SUGGESTED HARDWARE: MATCH EXISTING
- CONTRACTOR SHALL OBTAIN FROM RESPECTIVE SUPPLIERS EXACT ROUGH OPENING SIZES FOR DOORS AND GLAZING AND ESTABLISH PROPER ROUGH OPENING SIZES.



**LCA** AA 003432  
Architecture, Inc.  
1975 Sansbury's Way  
Suite 108  
West Palm Beach, FL 33411  
Phone: (561) 493-4787  
Fax: (561) 493-4786

REVISIONS / DATE



TYP. MOUNTING DIAGRAMS  
SCALE: N.T.S.

Interior Improvement for  
**Advantone Florida, Inc.**  
855 SW 78th Ave. - Atrium "C" - Suite #202  
Plantation, Florida 33324

LESLAW A. CZACZYK AIA	
AR 00015391	
PROJ. NO.	16180.well
DESIGNED BY	LAC
DRAWN BY	MSB
DATE	07/25/16
SCALE	AS SHOWN

**SCHEDULES  
ELEVATIONS**