

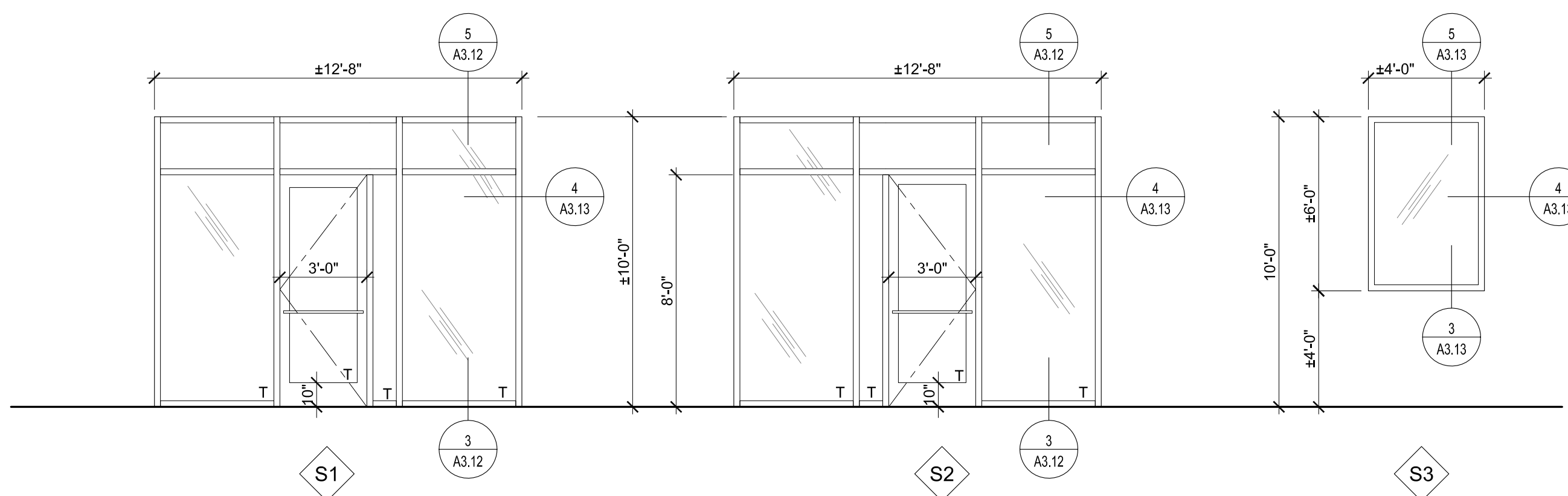
1. CONNECT ALL DOWNSPOUTS TO UNDERGROUND STORM WATER SYSTEM. PROVIDE "SQUARE TO ROUND" CONNECTION BOOT.

- 01 DASHED LINE DENOTES CANOPY ABOVE. TYPICAL.
- 02 DASHED LINE AT INTERIOR OF EXTERIOR WALL DENOTES FUTURE 5/8" GWB ON 3-5/8" GALV. METAL STUD FURRING WITH 3-1/2" BATT INSULATION (R-11 NOMINAL) TO BE INSTALLED AS PART OF TENANT BUILD-OUT (N.I.C. FOR SHELL CONTRACT). TYPICAL.
- 03 DASHED LINE DENOTES PRE-ENGINEERED CANOPY SYSTEM ABOVE. TYPICAL.
- 04 DASHED LINE DENOTES GUTTER ABOVE. TYPICAL.
- 05 3"x8" PRE-ENGINEERED ALUMINUM STRUCTURAL SUPPORT BRACE ASSEMBLY ABOVE. PRIME & PAINT. SEE DETAIL 6/A3.11 AND STRUCTURAL DRAWINGS FOR MORE INFORMATION. TYPICAL.
- 06 6"x6" 0.040" PRE-FINISHED ALUMINUM DOWNSPOUT
- 07 BRONZE LAMBS TONGUE CONNECTED TO 6"Ø OVERFLOW DRAIN
- 08 4"x4" 0.040" PRE-FINISHED ALUMINUM DOWNSPOUT
- 09 DASHED LINE DENOTES PRE-ENGINEERED "BOXED AWNING LOUVER" ABOVE. TYPICAL.
- 10 DASHED LINE DENOTES PROBABLE FUTURE TENANT DEMISING PARTITION. (N.I.C. FOR SHELL CONTRACT). TYPICAL.
- 11 LINE INDICATES EXTENT OF SLAB POUR. SLAB TO BE POURED AT PERIMETER ONLY. INTERIOR TO REMAIN AS COMPACTED FILL.
- 12 8" CMU WALL. SEE SECTIONS AND DETAILS FOR MORE INFORMATION. TYPICAL.

GENERAL NOTES

KEY NOTES

XX REFERENCED BY THIS SYMBOL



1. STOREFRONT AND CURTAIN WALL MANUFACTURER TO FIELD VERIFY SIZES FOR FINAL SIZES AND INSTALLATION DETAILS.
2. STOREFRONT WINDOW / DOOR AND CURTAIN WALL MANUFACTURER SHALL SUBMIT SIGNED & SEALED SHOP DRAWINGS TO ARCHITECT FOR FINAL APPROVAL. REFER TO SPECIFICATIONS FOR MORE INFORMATION.
3. T= TEMPERED / SAFETY GLAZING
4. ALL EXTERIOR GLAZING TO BE LARGE MISSILE IMPACT RATED
5. ALL EXTERIOR GLAZING TO BE INSULATED
6. DOORS & WINDOWS SHALL COMPLY WITH F.B.C. 1707.4.5.4 FOR 1.5 TIMES THE DESIGN WIND LOAD.
7. PROVIDE CYLINDER LOCK (W/ ADA COMPLIANT THUMB TURN) AND ADA COMPLIANT ALUMINUM THRESHOLD, BALANCE OF HARDWARE BY STOREFRONT MANUFACTURER.
8. INSTALL ALL STOREFRONT PER FLORIDA PRODUCT APPROVAL AND/OR MIAMI DADE NOA REQUIREMENTS.

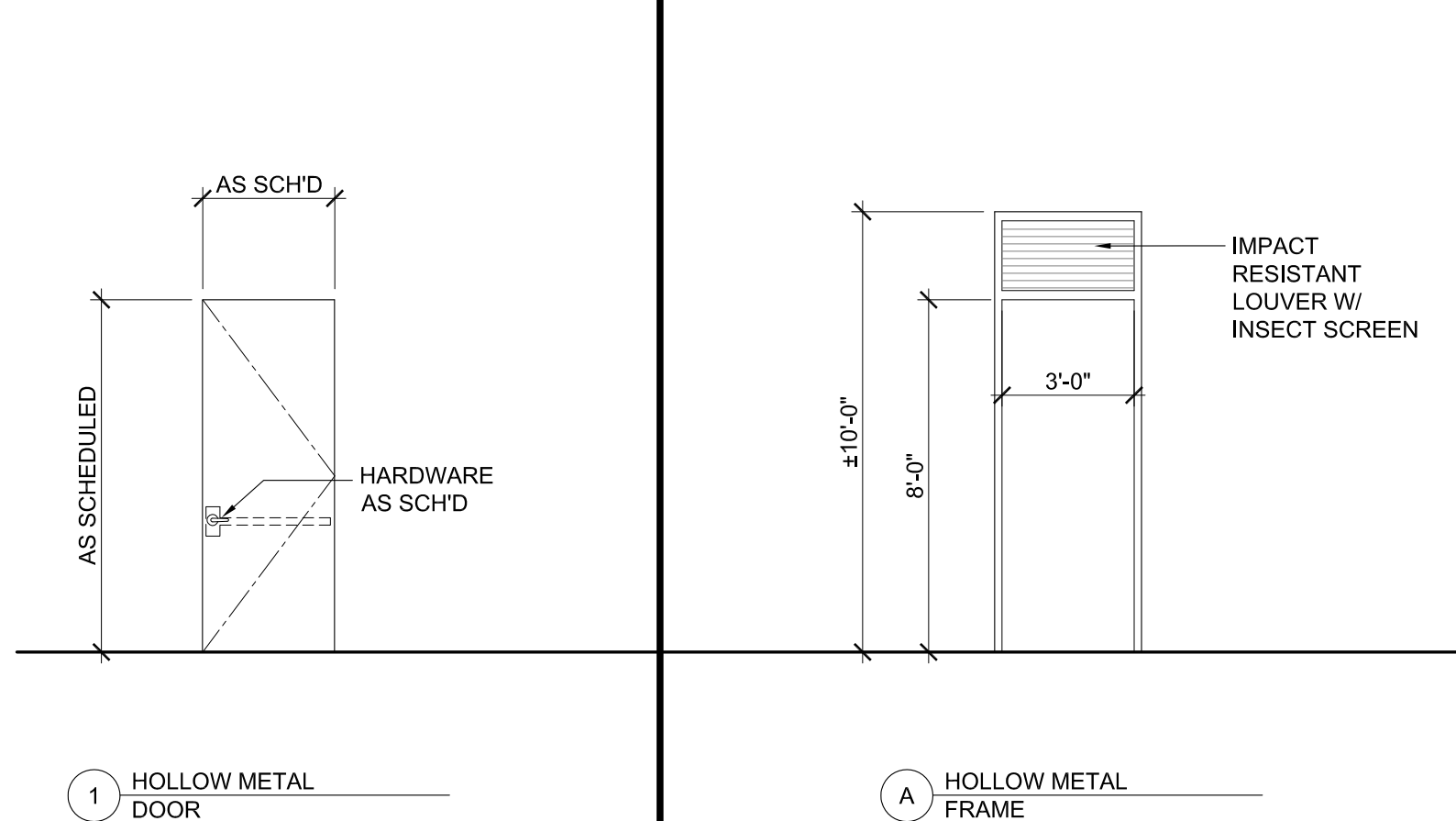
GLAZING
BASIS OF DESIGN IS LARGE AND SMALL IMPACT RATED / INSULATED ASSEMBLY USING:
PPG SOLARBAN 72 + STARPHIRE - SHGC 0.30 - SUMMER U VALUE: 0.27

STOREFRONT SYSTEM
BASIS OF DESIGN IS KAWNEER IR-501 LARGE AND SMALL IMPACT RATED / INSULATED FLORIDA PRODUCT APPROVAL FL3787
MIAMI DADE, NOA No. 14-30.18 (EXP 02-15-2017)
FINISH: CLEAR ANODIZED ALUMINUM
APPROVED FOR USE IN HVHZ; YES

SEE STRUCTURAL DRAWINGS FOR COMPONENTS AND CLADDING REQUIREMENTS. DESIGN STOREFRONT SYSTEM AS REQUIRED TO RESIST PRESSURES INDICATED THERE-IN.

STOREFRONT TYPES

SCALE 1/4"=1'-0" **4**



DOOR TYPES

DOOR FRAME TYPES

HARDWARE SET No. 1

QTY.	A.	TYPE	DESCRIPTION	FINISH
3EA.		HINGES	BB1279 4 1/2" X 4 1/2" NRP	652
1EA.		EXIT DEVICE	4501 X RM X G	626
1EA.		EXIT TRIM	45CE X AUG	626
1EA.		MORTISE CYLINDER	3902	626
1EA.		CLOSER	5100 X HDHOS	689
1EA.		KICK PLATE	1945	630
1EA.		THRESHOLD	412S	MIL
1EA.		DRIP GUARD	810S	MIL
1EA.		DOOR SWEEP	750S	MIL
1SET		GASKETING	881S	MIL
1EA.		LATCH GUARD		MIL

- HARDWARE NOTES:**
1. ALL DOOR HARDWARE SHALL COMPLY WITH H.C. ACCESSIBILITY CHAPTER 553, PAR V, FLORIDA STATUTES. DOORS TO HAVE OPENING FORCE 5.9LBS.
 2. ALL LEVERS TO COMPLY W/ A.D.A. ACCESSIBILITY.
 3. ALL EGRESS DOORS HAVE LEVER HANDLES.
 4. PROVIDE FLOOR/WALL STOPS AS REQUIRED.
 5. ANY HARDWARE NOT AVAILABLE IN FINISH NOTED ABOVE SHALL BE PROVIDED IN US28D/626-652 OR US32D/630. NOTIFY ARCHITECT

HOLLOW METAL DOOR
BASIS OF DESIGN IS: CURRIES MODEL 707 FLUSH DOOR
LARGE AND SMALL IMPACT RATED / INSULATED ASSEMBLY
APPROVED FOR USE IN HVHZ
19 GA FACE SKINS
SHOP PRIMER OVER G90 GALVANIZED COAT
FLORIDA PRODUCT APPROVAL FL3994-R3

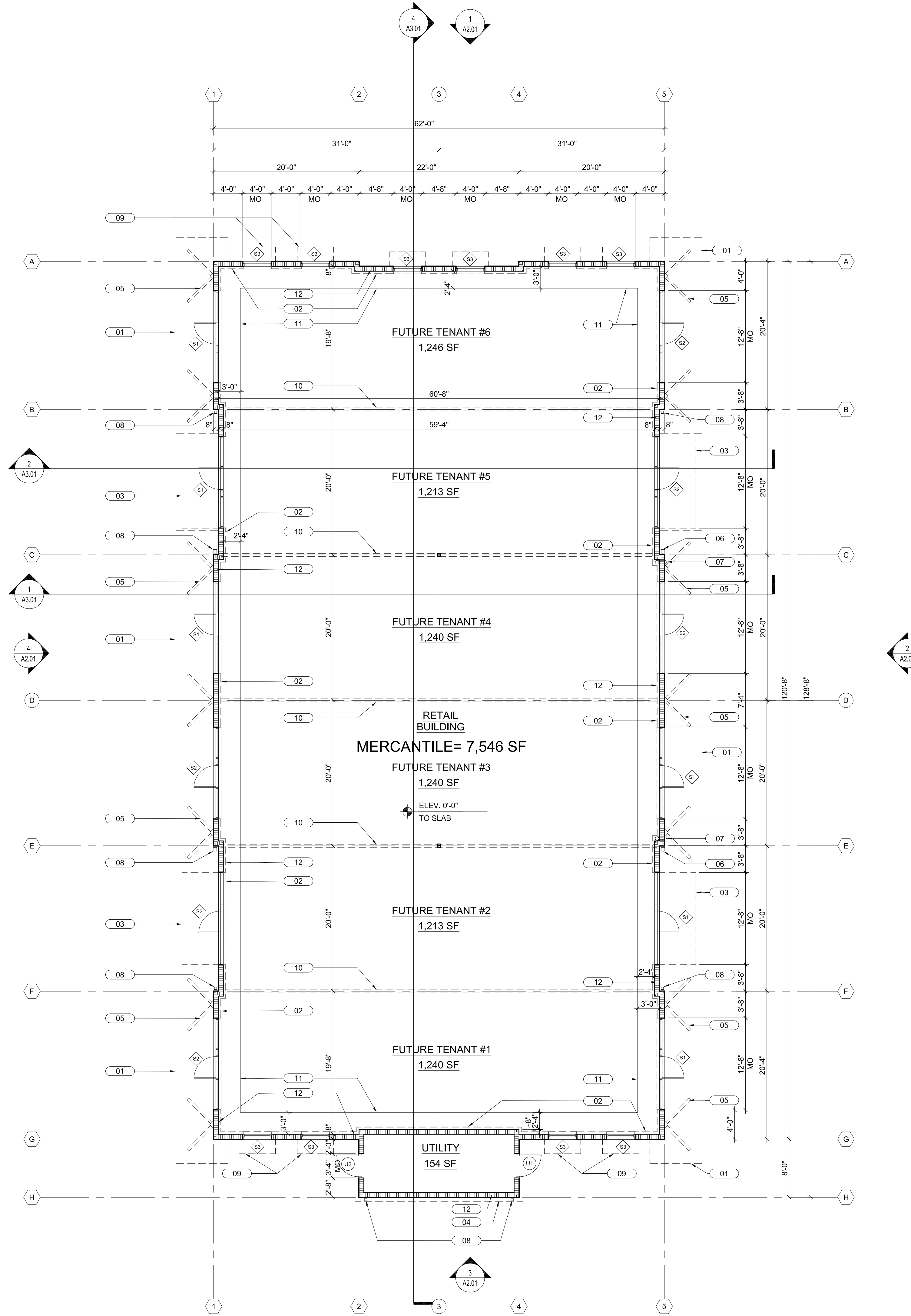
HOLLOW METAL FRAME
16 GA. MITERED AND WELDED (KD FRAMES WILL NOT BE ACCEPTED)
LARGE AND SMALL IMPACT RATED
APPROVED FOR USE IN HVHZ
SHOP PRIMER OVER G90 GALVANIZED COAT

AFTER INSTALLATION REPAIR SCRATCHES, RUST SPOTS AND DENTS PER MANUFACTURER'S RECOMMENDATIONS. DTM PRIME AND EPOXY PAINT.

SEE STRUCTURAL DRAWINGS FOR COMPONENTS AND CLADDING REQUIREMENTS. DOOR SYSTEM AS REQUIRED TO RESIST PRESSURES INDICATED THERE-IN.

DOOR, FRAME AND HARDWARE

SCALE 1/4"=1'-0" **3**



CONSTRUCTION FLOOR PLAN

SCALE 1/8"=1'-0" **1**

BULLETIN LOG



WESTLAKE AUXILIARY SALES CENTER
CITY OF WESTLAKE
PALM BEACH COUNTY, FLORIDA

ISSUE DATE: - 09-30-16
ISSUED FOR:
PERMIT - BUILDING SHELL ONLY
©AS DATED ARCHITECTURE PLUS INTERNATIONAL, INC.

REVISION LOG

STATE REGISTRATIONS
FL #AAC001935 NC #B581
SC #6109 GA #10079
TN #00102675

Juan F. Romero AIA License No. AR000793
TO THE BEST OF THE KNOWLEDGE OF THE ARCHITECT AND ENGINEER, NO PLANS AND SPECIFICATIONS DRAWN WITH THE ARCHITECT OR ENGINEER VIOLATE ANY APPLICABLE LAWS OR REGULATIONS OR THE APPLICABLE MINIMUM SAFETY STANDARDS.

WESTLAKE AUXILIARY SALES CENTER
PROJECT NAME
CONST. PLAN / DOOR AND STOREFRONT SCHED.
SHEET NAME
PROJECT NUMBER: **2018.082**
DRAWN BY: **PC** CHECKED BY: **PC**
SCALE: **AS NOTED**
A102
SHEET NUMBER