

BULLETIN LOG



WESTLAKE VISITOR CENTER
 CITY OF WESTLAKE
 PALM BEACH COUNTY, FLORIDA

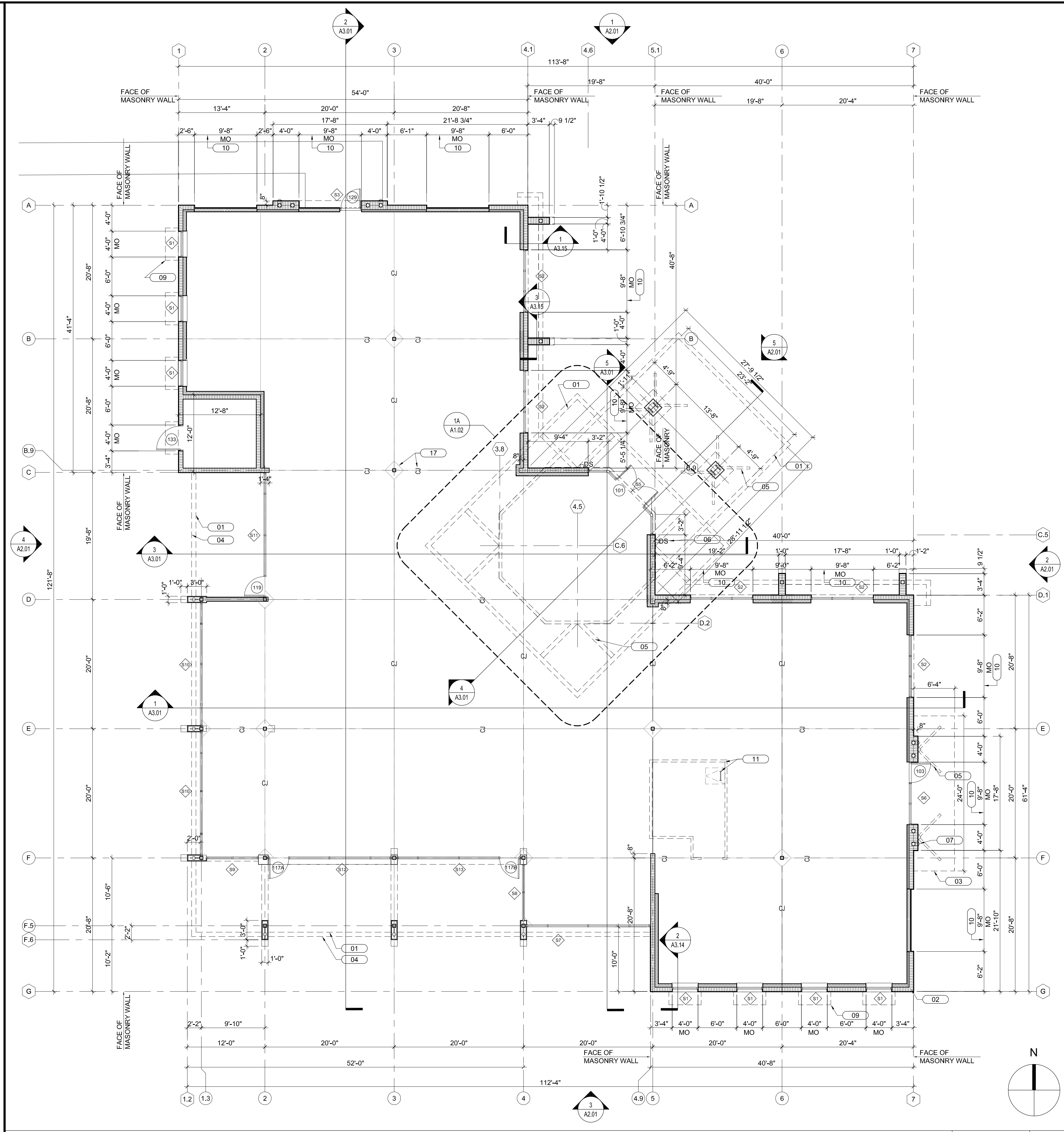
ISSUE DATE: - 09-30-16
 ISSUED FOR:
 PERMIT - BUILDING SHELL ONLY
 © AS DATED ARCHITECTURE PLUS INTERNATIONAL, INC.

REVISION LOG

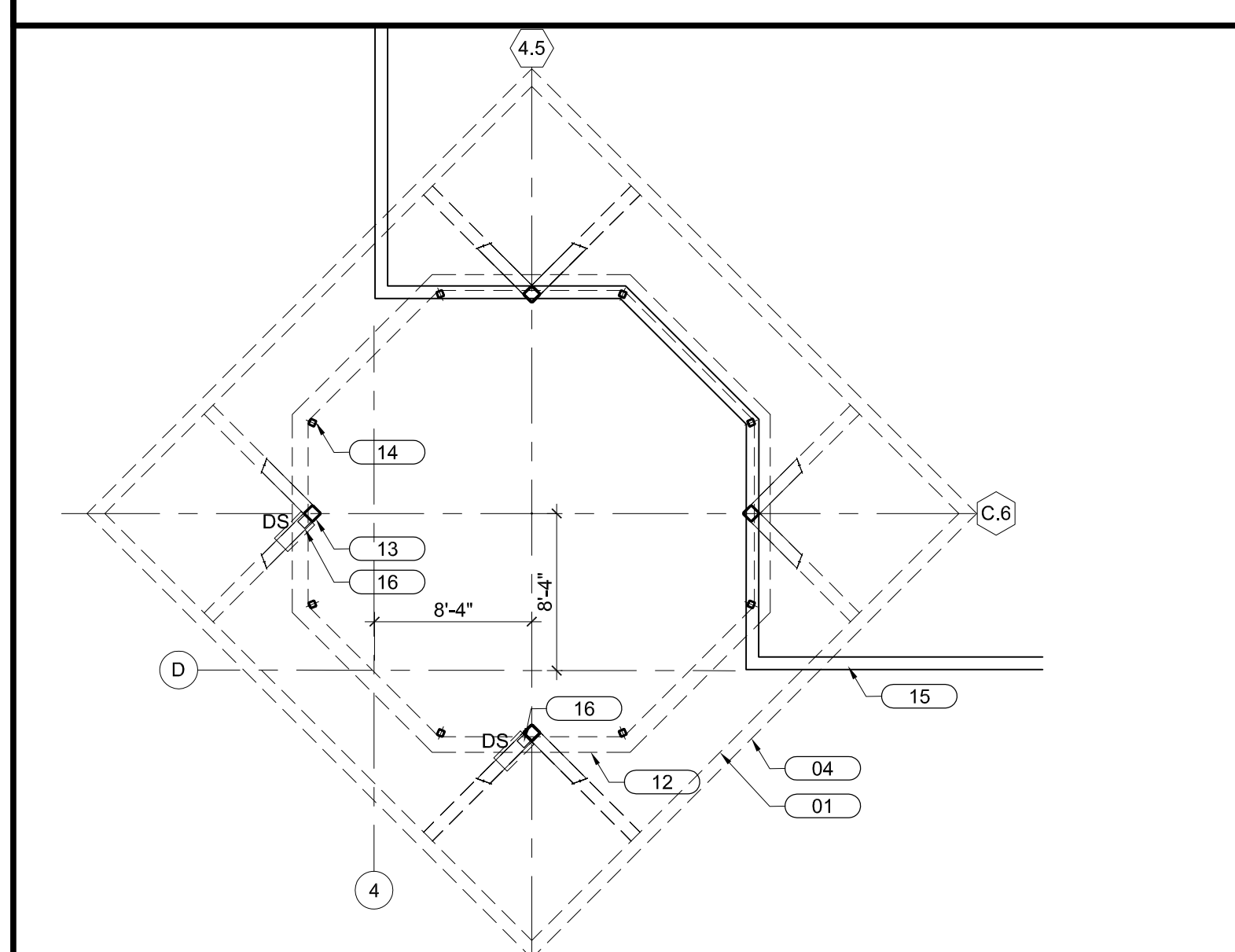
STATE REGISTRATIONS
 FL #AAC001935 NC #8581
 SC #6109 GA #10079
 TN #00102675

Juan F. Romero AIA License No. AR000793
TO THE BEST OF THE KNOWLEDGE OF THE ARCHITECT AND ENGINEER, SAID PLANS AND SPECIFICATIONS COMPLY WITH THE PROVISIONS OF THE FLORIDA BUILDING CODES AND THE APPLICABLE MINIMUM SAFETY STANDARDS.

WESTLAKE VISITOR CENTER
 PROJECT NAME
**CONSTRUCTION PLAN/
 ENTRY FEATURE PLAN**
 SHEET NAME
 PROJECT NUMBER: **2016.037**
 DRAWN BY: **DF/CV** CHECKED BY: **TM/PC**
 SCALE: **AS NOTED**
A1.02
 SHEET NUMBER



CONSTRUCTION FLOOR PLAN SCALE 1/8" = 1'-0" **1**



ROOFTOP ENTRY FEATURE PLAN SCALE 1/8" = 1'-0" **1A**

1. CONNECT ALL DOWNSPOUTS TO UNDERGROUND STORM WATER SYSTEM. PROVIDE "SQUARE TO ROUND" CONNECTION BOOT.

- 01 DASHED LINE DENOTES CANOPY/ROOF ABOVE, TYPICAL
- 02 8" CMU WALL. SEE SECTIONS AND DETAILS FOR MORE INFORMATION. TYPICAL
- 03 DASHED LINE DENOTES PRE-ENGINEERED CANOPY SYSTEM ABOVE. TYPICAL
- 04 DASHED LINE DENOTES GUTTER ABOVE. TYPICAL
- 05 TUBE STEEL STRUCTURAL SUPPORT BRACKET ASSEMBLY ABOVE. TYPICAL
- 06 6"x6" 0.040" PRE-FINISHED ALUMINUM DOWNSPOUT
- 07 BRONZE LAMBS TONGUE CONNECTED TO 6"Ø OVERFLOW DRAIN
- 08 4"x4" 0.040" PRE-FINISHED ALUMINUM DOWNSPOUT
- 09 DASHED LINE DENOTES PRE-ENGINEERED "BOXED AWNING LOUVER" ABOVE. TYPICAL
- 10 COORDINATE MASONRY OPENING SIZE WITH ARCHITECTURAL DRAWINGS REGARDING ACTUAL STOREFRONT SIZE. TYPICAL OF (10) OPENINGS
- 11 PRE-MFGR'D ROOF HATCH/CURBLADDER. PROVIDE 6" METAL STUD/GYP. BD. LADDER SUPPORT WALL AS REQUIRED. SEE ARCH'L / ID DRAWINGS.
- 12 PRE-MFGR'D 10" METAL LOUVERS-SEE WALL SECTIONS.
- 13 8X8 GALV. PRIMED/PAINTED HSS TYPICAL.
- 14 4X4 GALV. PRIMED/PAINTED HSS TYPICAL.
- 15 ROOF PARAPET BELOW.
- 16 DOWNSPOUT MOUNTED TO SUPPORT TUBE & 12"X24" TPO SPLASHPAD.
- 17 (CJ) SLAB CONTROL JOINT, TYPICAL.

GENERAL NOTES

KEY NOTES REFERENCED BY THIS SYMBOL