

Date:  
 Mark Duckett,  
 P.E., S.I., S.E.S.C.  
 consulting Structural Engineer  
 3844 N.W. 43rd Terr.  
 Coconut Creek, FL  
 FL Registration P.E. #45196  
 S.I. #1040

Bermuda High West  
 2150 S. Ocean Boulevard  
 Delray Beach,  
 Florida  
 RBA: PN: 11616.04

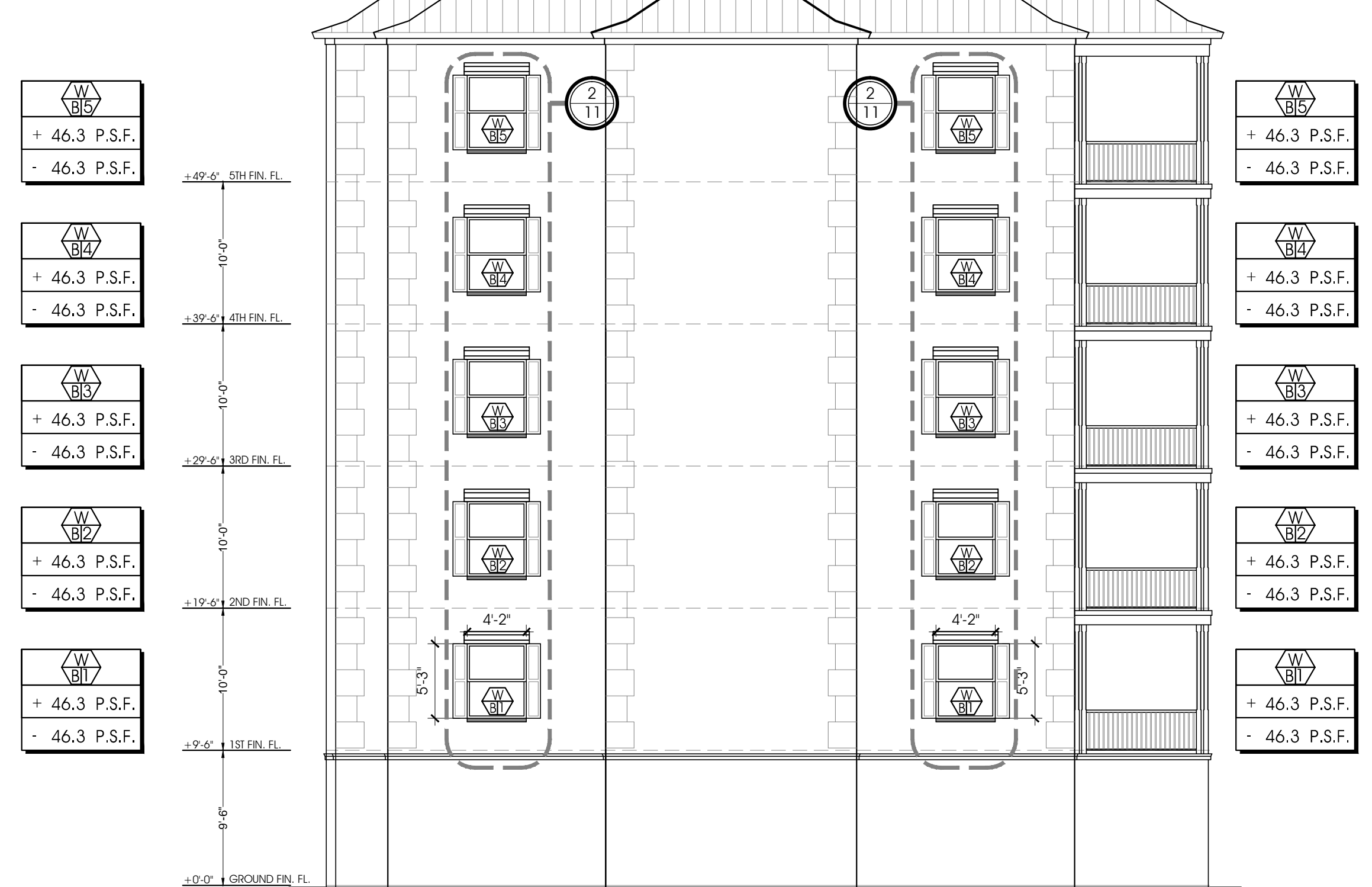
Issued  
 ● Permit Set  
 ○ G.C. Bid Set  
 ○ Owner Review  
 ● 9-15-16: Structural Review



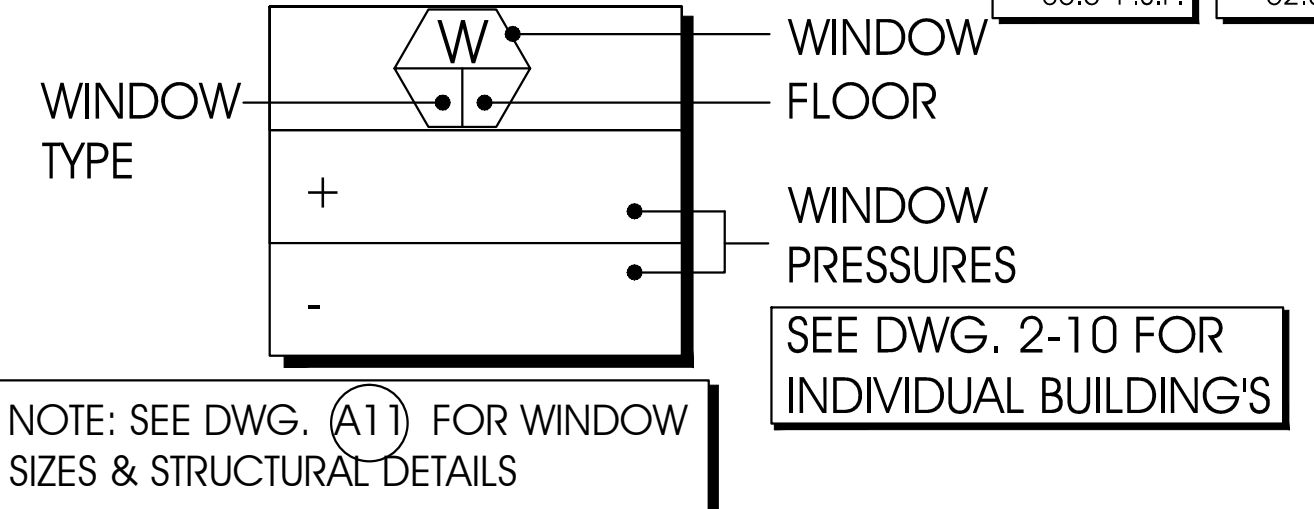
Rear Elevation

Front Elevation

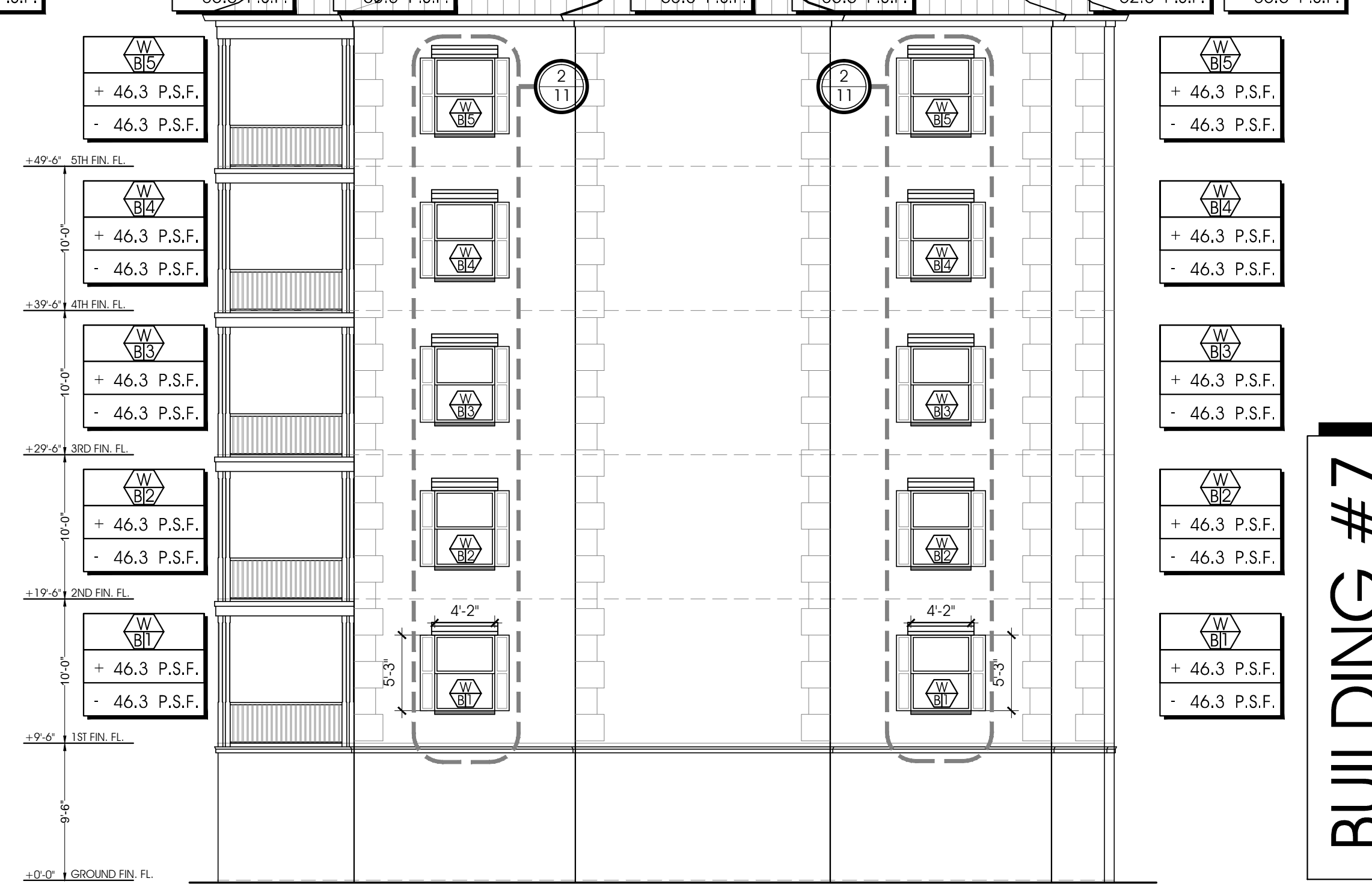
Finish Notes:		1/8" SC	
1	NEW PGT WINDOWS INSTALLED PER NOA	W 45	+ 46.7 P.S.F. - 85.6 P.S.F.
2	NEW 3/8" STUCCO FINISH TO MATCH EXISTING BONDING AGENT	W 46	+ 42.4 P.S.F. - 43.7 P.S.F.
3	ALUMINUM COLONIAL SHUTTER BY WILLARD SHUTTER CO. MIAMI, FL. INSTALL PER APPROVED NOA (MATCH EXISTING SHUTTER SPECS.)	W 47	+ 42.4 P.S.F. - 43.7 P.S.F.
<b>Aluminum Colonial Shutters</b>		W 48	+ 42.4 P.S.F. - 43.7 P.S.F.
ALUMINUM COLONIAL SHUTTER BY: WILLARD SHUTTER CO. MIAMI, FL. INSTALL PER APPROVED NOA (MATCH EXISTING SHUTTER SPECS.) 4420 NW 35 COURT, MIAMI, FL. 33142		W 49	+ 42.4 P.S.F. - 43.7 P.S.F.
W 50		W 51	+ 46.7 P.S.F. - 85.6 P.S.F.
W 51		W 52	+ 46.7 P.S.F. - 85.6 P.S.F.
W 52		W 53	+ 46.7 P.S.F. - 85.6 P.S.F.
W 53		W 54	+ 46.7 P.S.F. - 85.6 P.S.F.
W 54		W 55	+ 46.7 P.S.F. - 85.6 P.S.F.
W 55		W 56	+ 46.7 P.S.F. - 85.6 P.S.F.
W 56		W 57	+ 46.7 P.S.F. - 85.6 P.S.F.
W 57		W 58	+ 46.7 P.S.F. - 85.6 P.S.F.
W 58		W 59	+ 46.7 P.S.F. - 85.6 P.S.F.
W 59		W 60	+ 46.7 P.S.F. - 85.6 P.S.F.
W 60		W 61	+ 46.7 P.S.F. - 85.6 P.S.F.
W 61		W 62	+ 46.7 P.S.F. - 85.6 P.S.F.
W 62		W 63	+ 46.7 P.S.F. - 85.6 P.S.F.
W 63		W 64	+ 46.7 P.S.F. - 85.6 P.S.F.
W 64		W 65	+ 46.7 P.S.F. - 85.6 P.S.F.
W 65		W 66	+ 46.7 P.S.F. - 85.6 P.S.F.
W 66		W 67	+ 46.7 P.S.F. - 85.6 P.S.F.
W 67		W 68	+ 46.7 P.S.F. - 85.6 P.S.F.
W 68		W 69	+ 46.7 P.S.F. - 85.6 P.S.F.
W 69		W 70	+ 46.7 P.S.F. - 85.6 P.S.F.
W 70		W 71	+ 46.7 P.S.F. - 85.6 P.S.F.
W 71		W 72	+ 46.7 P.S.F. - 85.6 P.S.F.
W 72		W 73	+ 46.7 P.S.F. - 85.6 P.S.F.
W 73		W 74	+ 46.7 P.S.F. - 85.6 P.S.F.
W 74		W 75	+ 46.7 P.S.F. - 85.6 P.S.F.
W 75		W 76	+ 46.7 P.S.F. - 85.6 P.S.F.
W 76		W 77	+ 46.7 P.S.F. - 85.6 P.S.F.
W 77		W 78	+ 46.7 P.S.F. - 85.6 P.S.F.
W 78		W 79	+ 46.7 P.S.F. - 85.6 P.S.F.
W 79		W 80	+ 46.7 P.S.F. - 85.6 P.S.F.
W 80		W 81	+ 46.7 P.S.F. - 85.6 P.S.F.
W 81		W 82	+ 46.7 P.S.F. - 85.6 P.S.F.
W 82		W 83	+ 46.7 P.S.F. - 85.6 P.S.F.
W 83		W 84	+ 46.7 P.S.F. - 85.6 P.S.F.
W 84		W 85	+ 46.7 P.S.F. - 85.6 P.S.F.
W 85		W 86	+ 46.7 P.S.F. - 85.6 P.S.F.
W 86		W 87	+ 46.7 P.S.F. - 85.6 P.S.F.
W 87		W 88	+ 46.7 P.S.F. - 85.6 P.S.F.
W 88		W 89	+ 46.7 P.S.F. - 85.6 P.S.F.
W 89		W 90	+ 46.7 P.S.F. - 85.6 P.S.F.
W 90		W 91	+ 46.7 P.S.F. - 85.6 P.S.F.
W 91		W 92	+ 46.7 P.S.F. - 85.6 P.S.F.
W 92		W 93	+ 46.7 P.S.F. - 85.6 P.S.F.
W 93		W 94	+ 46.7 P.S.F. - 85.6 P.S.F.
W 94		W 95	+ 46.7 P.S.F. - 85.6 P.S.F.
W 95		W 96	+ 46.7 P.S.F. - 85.6 P.S.F.
W 96		W 97	+ 46.7 P.S.F. - 85.6 P.S.F.
W 97		W 98	+ 46.7 P.S.F. - 85.6 P.S.F.
W 98		W 99	+ 46.7 P.S.F. - 85.6 P.S.F.
W 99		W 100	+ 46.7 P.S.F. - 85.6 P.S.F.



Elevation Right Side



KEY PLAN



Elevation Left Side

Proposed Elevations Bldg. 7  
 6-Story  
 1/8" SC

BUILDING #7

ALL BEINGS, CONCEPTS AND IDEAS CONTAINED AND REPRESENTED HEREIN ARE THE PROPERTY OF RICK BRAUTIGAN ARCHITECTURE, INC. AND MAY NOT BE ALTERED, CHANGED, MODIFIED OR COPIED WITHOUT THE PERMISSION OF RICK BRAUTIGAN ARCHITECTURE, INC. EXPRESSED IN WRITING. 1. DRAWINGS ARE NOT TO BE SCALED. WRITTEN DIMENSIONS HAVE PRECEDENCE OVER ALL SCALED DIMENSIONS. 2. CONTRACTOR TO VERIFY ALL DIMENSIONS AND ADVISE ARCHITECT OF ANY DISCREPANCIES. CONSTRUCTION SHALL NOT PROCEED UNTIL SAID DISCREPANCIES HAVE BEEN RESOLVED. 3. NO MATERIALS OR SYSTEMS ARE TO BE FABRICATED UNTIL ALL DIMENSIONS HAVE BEEN VERIFIED BY CONTRACTOR BY SHOP DRAWINGS HAVE BEEN REVIEWED AND ACCEPTED BY THE ARCHITECT.

