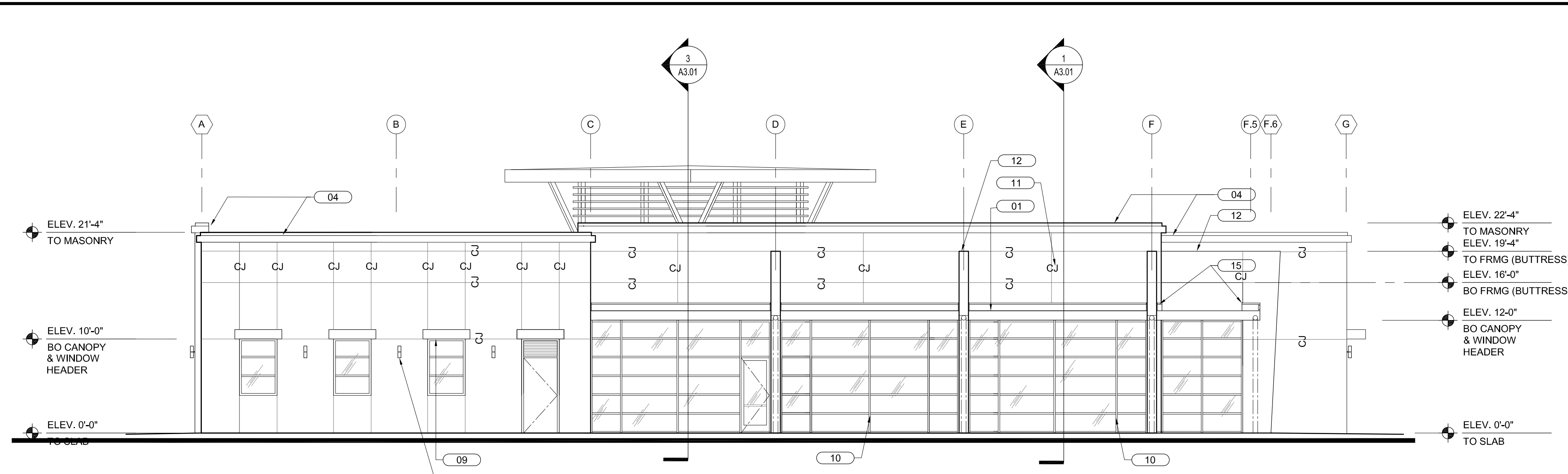


- CONNECT ALL DOWNSPOUTS TO UNDERGROUND STORM WATER SYSTEM. PROVIDE "SQUARE TO ROUND" CONNECTION BOOT.
- ALL SIGNAGE IS BY OTHERS UNDER SEPARATE PERMIT
- ALL COPING CORNERS TO BE SHOP FABRICATED, MITERED, WELDED AND GROUND SMOOTH. FOLDED AND RIVETED CORNERS WILL NOT BE ACCEPTED.

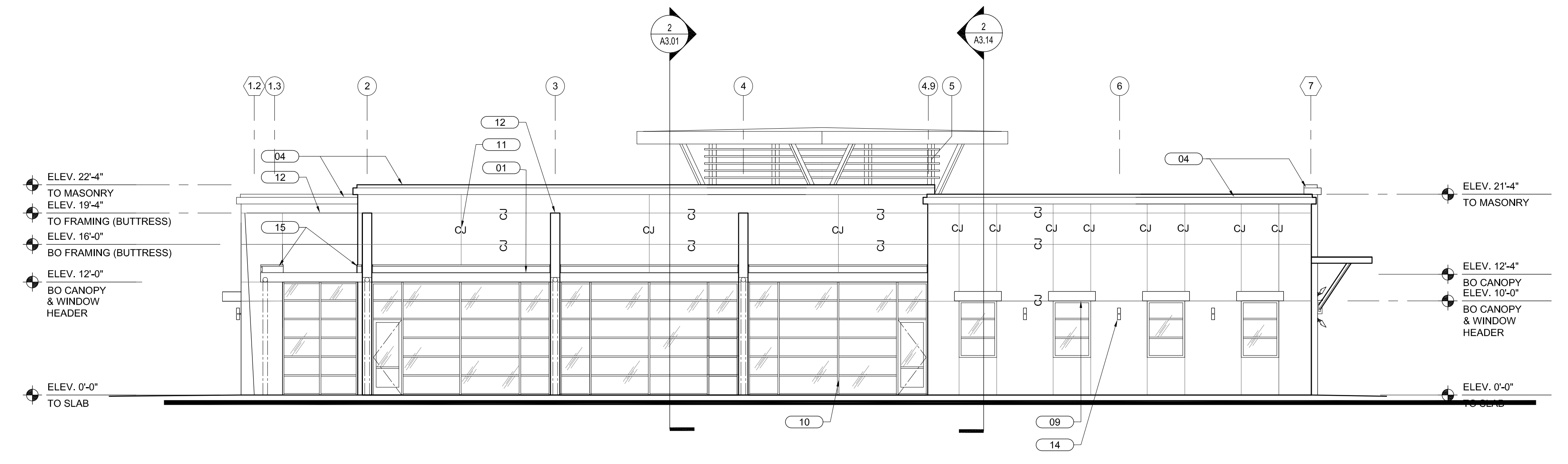
- 01 0.040" PRE-FINISHED ALUMINUM GUTTER. SEE DETAILS FOR MORE INFORMATION.
- 02 STUCCO WITH SAND FINISH, PRIME & PAINT. TYPICAL FOR ENTIRE EXTERIOR FINISH U.O.N.
- 03 NOT USED
- 04 0.050" PRE-FINISHED ALUMINUM COPING WITH WIND CLIPS AT 18" O.C. MAX. SEE DETAILS FOR MORE INFORMATION.
- 05 TUBE STEEL STRUCTURAL SUPPORT BRACKET ASSEMBLY. PRIME & PAINT. SEE DETAILS AND STRUCTURAL DRAWINGS FOR MORE INFORMATION. TYPICAL
- 06 THRU WALL ROOF SCUPPER & 6"Ø PVC DOWNSPOUT
- 07 BRONZE LAMBS TONGUE CONNECT TO 6"Ø PVC OVERFLOW DRAIN
- 08 4"x4" 0.040" PRE-FINISHED ALUMINUM DOWNSPOUT
- 09 PRE-ENGINEERED "BOXED AWNING LOUVER", TYPICAL
- 10 ALUMINUM AND GLASS STOREFRONT SYSTEM, TYPICAL
- 11 "CJ" REFERS TO STUCCO CONTROL JOINT, TYPICAL.
- 12 PAINTED STUCCO BUTTRESS, TYPICAL
- 13 NOT USED
- 14 SURFACE MOUNTED WALL SCONES. SEE WALL SECTIONS. TYPICAL. (SEE ELECTRICAL DRAWINGS)
- 15 LINE DENOTES FLASHING. SEE SECTIONS AND DETAILS FOR MORE INFORMATION. TYPICAL
- 16 10" "KAWNEER VERSOLEIL" ALUMINUM LOUVERS ATTACHED TO PAINTED 4X4 GALV. STL. POSTS. SEE SECTIONS AND DETAILS FOR MORE INFORMATION. TYPICAL
- 17 NOT USED

GENERAL NOTES

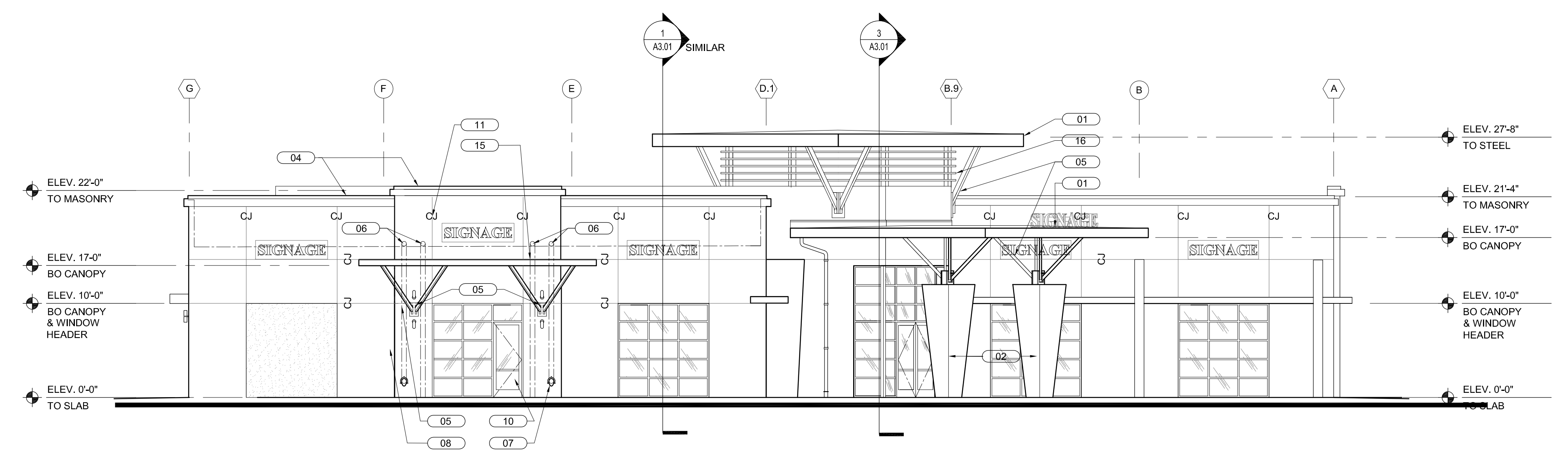
KEY NOTES XX REFERENCED BY THIS SYMBOL.



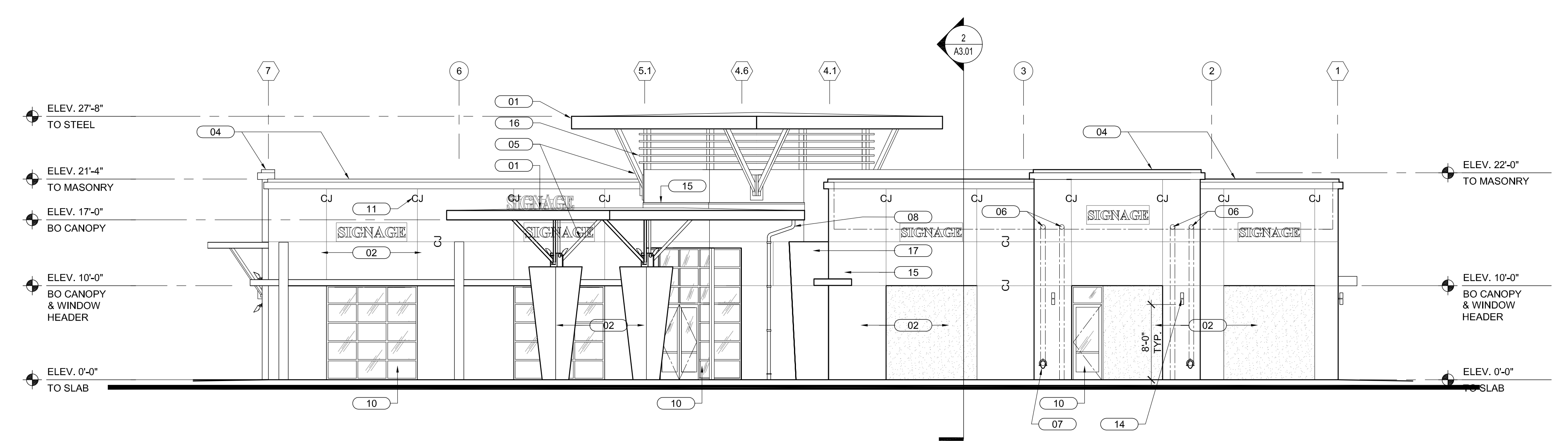
WEST ELEVATION SCALE 1/8" = 1'-0" **4**



SOUTH ELEVATION SCALE 1/8" = 1'-0" **3**

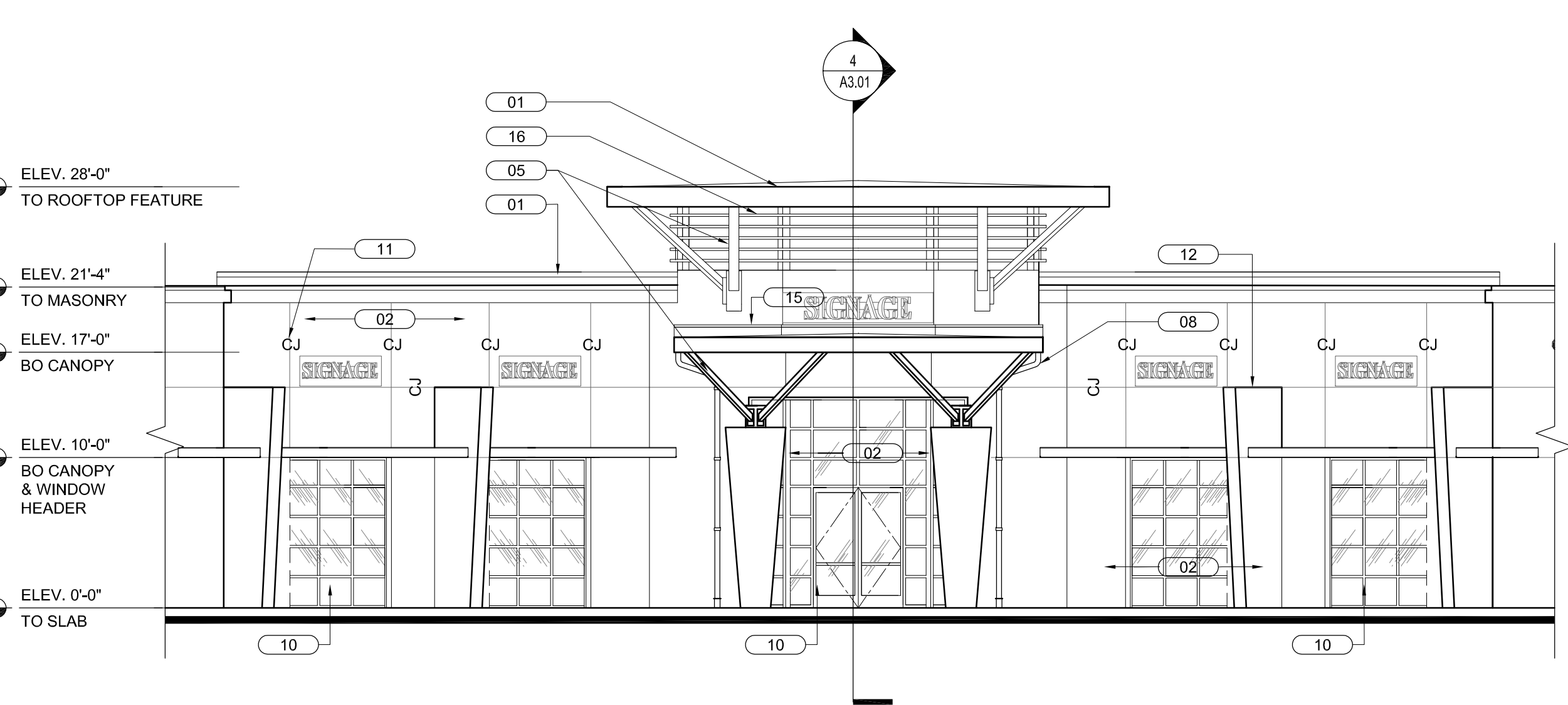


EAST ELEVATION SCALE 1/8" = 1'-0" **2**



NORTH ELEVATION SCALE 1/8" = 1'-0" **1**

NOT USED SCALE NA **6**



NORTHEAST ELEVATION SCALE 1/8" = 1'-0" **5**

○
○
○
○
○
○
○
○

BULLETIN LOG



**WESTLAKE VISITOR
 CENTER**
 CITY OF WESTLAKE
 PALM BEACH COUNTY, FLORIDA

ISSUE DATE: - 09-30-16
 ISSUED FOR:
PERMIT - BUILDING SHELL ONLY
© AS DATED ARCHITECTURE PLUS INTERNATIONAL, INC.

△
△
△
△
△
△
△
△

REVISION LOG

STATE REGISTRATIONS	
FL #AAC001935	NC #8581
SC #6109	GA #10079
TN #00102675	

Juan F. Romero AIA License No. AP00007793
 TO THE BEST OF THE KNOWLEDGE OF THE ARCHITECT AND ENGINEER, SAID PLANS AND SPECIFICATIONS COMPLY WITH THE APPLICABLE LOCAL, STATE AND FEDERAL CODES AND THE APPLICABLE MINIMUM SAFETY STANDARDS.

**WESTLAKE VISITOR
 CENTER**
 PROJECT NAME
EXTERIOR ELEVATIONS
 SHEET NAME
 PROJECT NUMBER: **2016.037**
 DRAWN BY: **BB/CV** CHECKED BY: **TM/PC**
 SCALE:
A2.01
 SHEET NUMBER