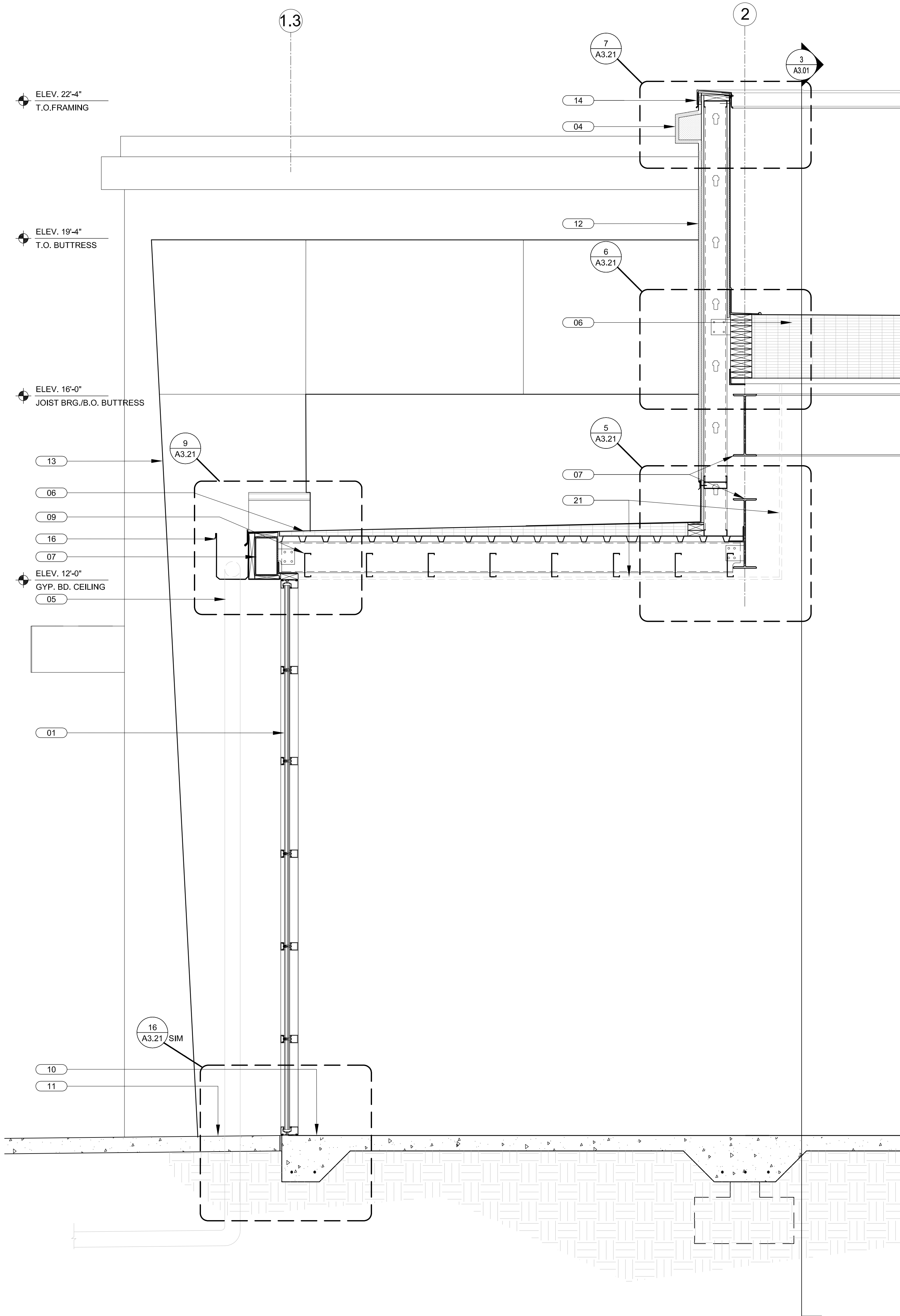
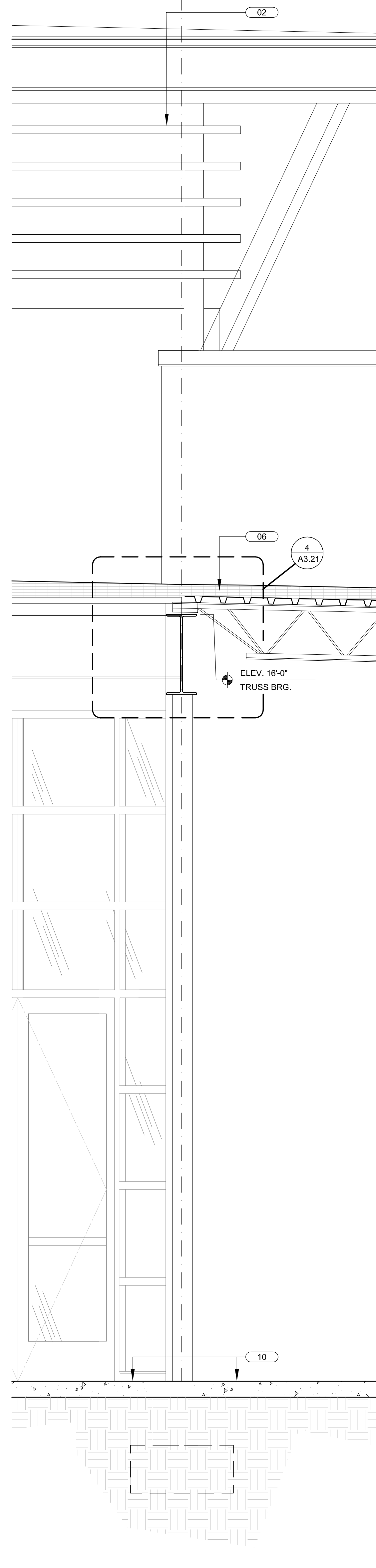


- KEY NOTES**
- 01 CURTAIN WALL GLAZING SYSTEM BY "KAWNEER" OR EQUAL.
  - 02 10" KAWNEER VERSOLEIL LOUVERS ATTACHED TO PRIMED/PAINTED 4x4 GALV. STEEL POSTS. TYPICAL.
  - 03 3" STUCCO ON GALV. P.B. MTL. LATH ON 15# FELT ON 8" CMU.
  - 04 STUCCO ON FOAM TRM ACCENT BAND.
  - 05 PVC DOWNSPOUT CONCEALED IN BUTTRESS. CONNECT TO STORM DRAIN SYSTEM-SEE CIVIL DWG'S.
  - 06 TPO ROOFING SYSTEM ON TAPERED INSULATION ON GALV. MTL. DECK.
  - 07 STRUCTURAL BEAM-SEE STRUCL DWG'S.
  - 08 CORBEL LEADING EDGE OF MASONRY BUTTRESS & FORM GROUT AS SHOWN.
  - 09 METAL STUD JOIST FRAMING-SEE STRUCL. DWG'S.
  - 10 SCHED. FLOOR FINISH ON REINF. CONC. SLAB-SEE STRUCL. DWG'S.
  - 11 PAVERS / CONC. WALKWAY-SEE CIVIL DWG'S.
  - 12 3" STUCCO ON GALV. P.B. MTL. LATH ON 15# FELT ON 3" DENSGLASS GOLD SHEATHING.
  - 13 STUCCO BUTTRESS BEYOND.
  - 14 PRE-MFG'D ANOD. ALUMINUM COPING CAP W/ P.T. NAILER.
  - 15 PRE-ENGINEERED STEEL ROOF TRUSS-SEE STRUCTURAL DRAWINGS.
  - 16 0.040" PRE-FINISHED ALUMINUM GUTTER. SEE DETAILS FOR MORE INFORMATION.
  - 17 PRE-ENGINEERED GALV. PAINTED MTL. CANOPY (BY OTHERS).
  - 18 SURFACE MOUNTED WALL SCONCE. PROVIDE JBOX-SEE ELEVATIONS AND SECTIONS. TYPICAL (SEE ELECTRICAL DRAWINGS).
  - 19 EXTERIOR LED SOFFIT LIGHT FIXTURE TYPICAL-SEE ELECTRICAL DRAWINGS.
  - 20 SEE STRUCTURAL DRAWINGS FOR FOUNDATIONS, CLIP ANGLES, LEDGERS, KNOCK-OUT BLOCKS, LINTELS, FILLED CELLS, ANCHORAGE AND REINFORCEMENT.
  - 21 DASHED LINE AT INTERIOR OF EXTERIOR WALL DENOTES FUTURE 5/8" GWB ON 6" GALV. METAL STUD FURRING WITH 5-1/2" BATT INSULATION (R-19 NOMINAL) TO BE INSTALLED AS PART OF TENANT BUILD-OUT (N.I.C. FOR SHELL CONTRACT), TYPICAL.
  - 22 3"x8" PRE-ENGINEERED ALUMINUM STRUCTURAL SUPPORT BRACE ASSEMBLY, PRIME & PAINT. SEE DETAIL 3/A3.13 & STRUCTURAL DRAWINGS FOR MORE INFORMATION, TYPICAL.
  - 23 SIGNAGE (BY OTHERS) PROVIDE JBOX-SEE ELECTRICAL DRAWINGS.

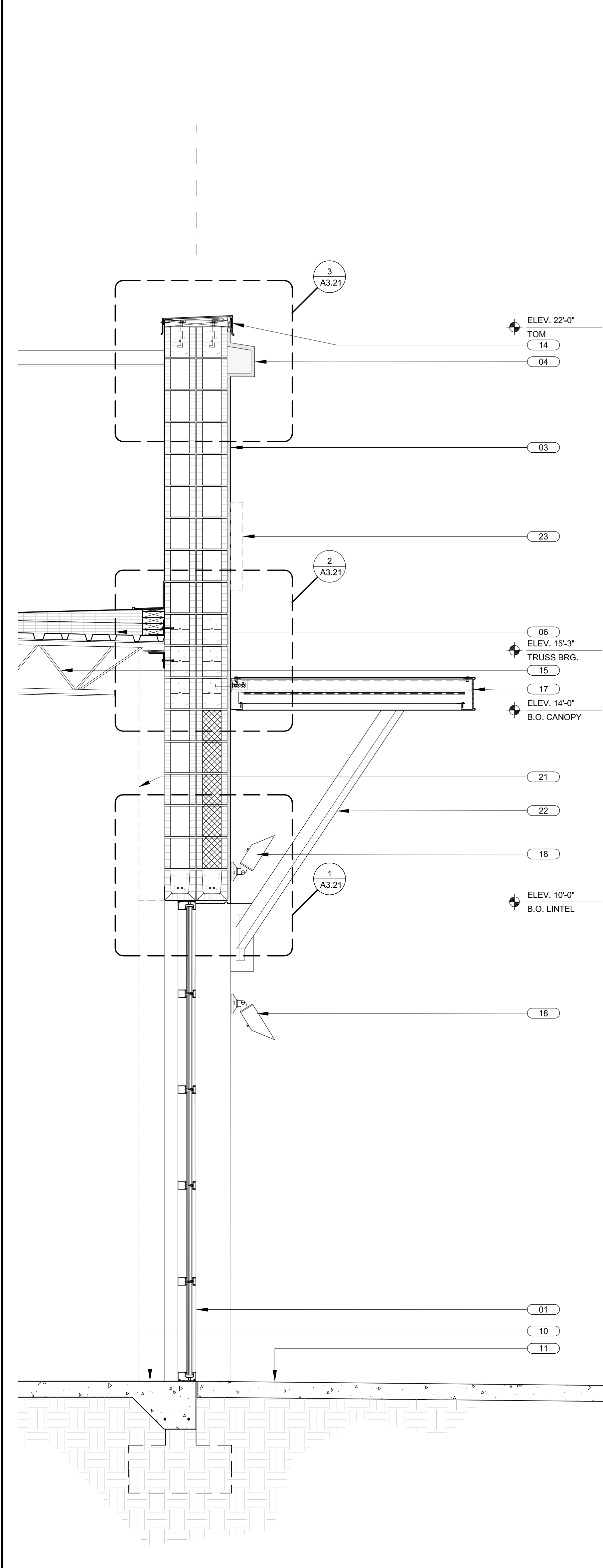
**KEY NOTES** SCALE NTS **4**



**WALL SECTION** SCALE 3/4" = 1'-0" **3**



**WALL SECTION** SCALE 3/4" = 1'-0" **2**



**WALL SECTION** SCALE 3/4" = 1'-0" **1**

BULLETIN LOG




**WESTLAKE VISITOR CENTER**  
 CITY OF WESTLAKE  
 PALM BEACH COUNTY, FLORIDA

ISSUE DATE: - 09-30-16  
 ISSUED FOR:  
 PERMIT - BUILDING SHELL ONLY  
 © AS DATED ARCHITECTURE PLUS INTERNATIONAL, INC.

REVISION LOG


STATE REGISTRATIONS  
 FL #AAC001935 NC #8581  
 SC #6109 GA #10079  
 TN #00102675

Juan F. Romero AIA License No. AP0000793  
TO THE BEST OF THE KNOWLEDGE OF THE ARCHITECT AND ENGINEER, SAID PLANS AND SPECIFICATIONS COMPLY WITH THE APPLICABLE MINIMUM BUILDING CODES AND THE APPLICABLE MINIMUM FIRE SAFETY STANDARDS.

**WESTLAKE VISITOR CENTER**  
 PROJECT NAME  
**WALL SECTIONS**  
 SHEET NAME  
 PROJECT NUMBER: 2016.037  
 DRAWN BY: DF/CV CHECKED BY: TM/PC  
 SCALE:  
**A3.11**  
 SHEET NUMBER