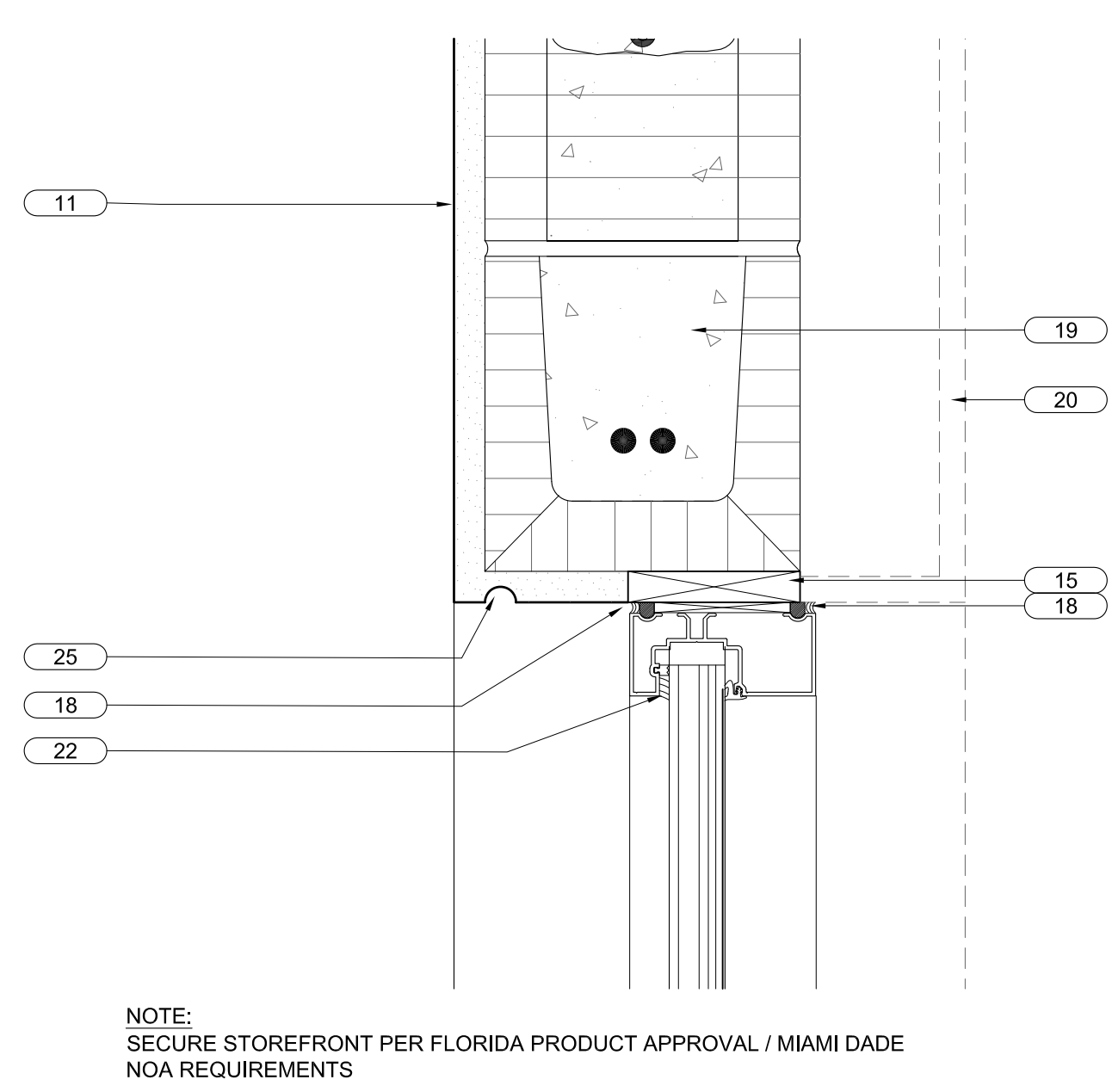


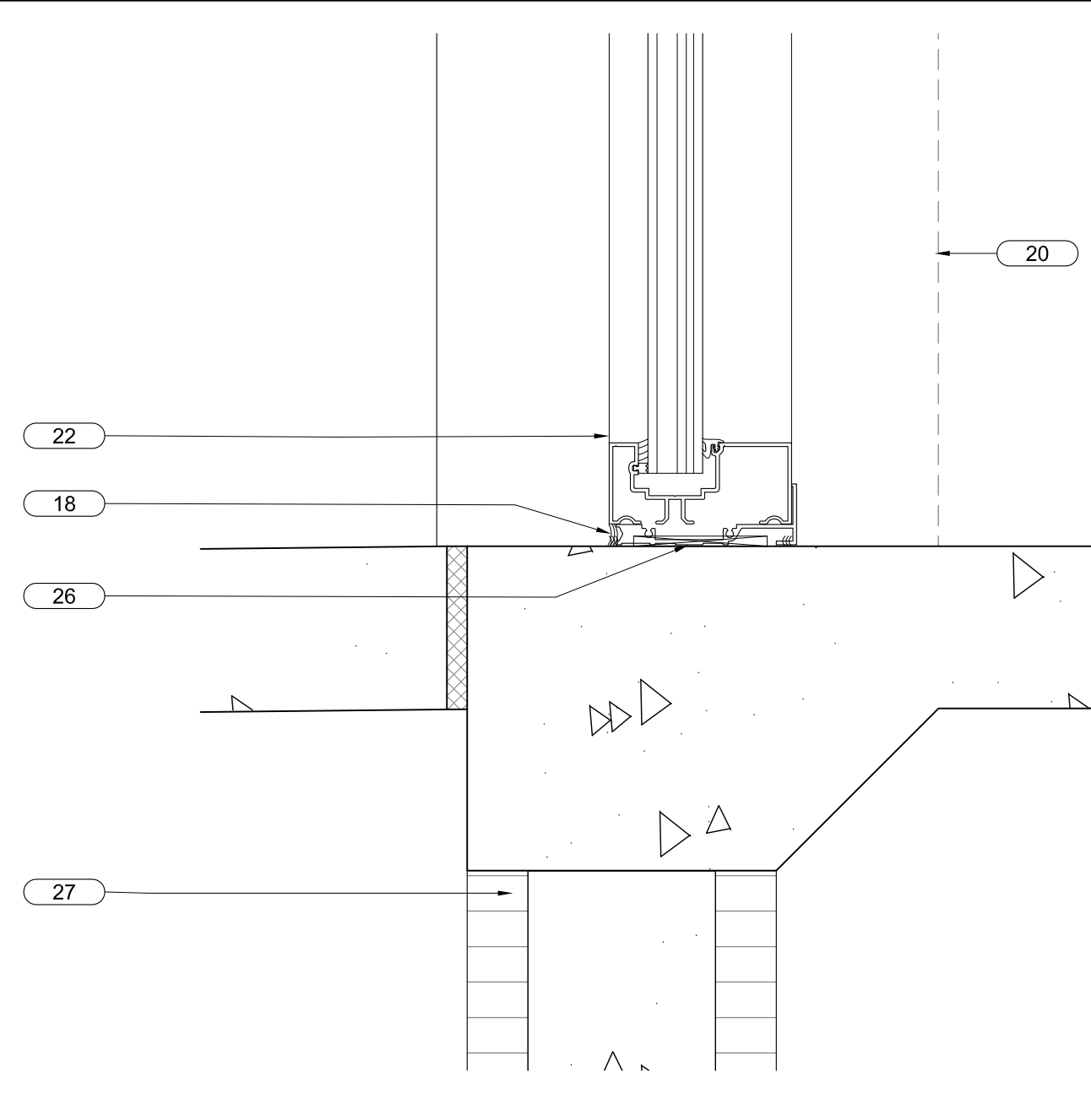
- 01 TPO ROOFING SYSTEM OVER R-19 RIGID INSULATION ON GALVANIZED METAL DECK. PROVIDE TAPERED INSULATION TO FORM CRICKETS AND SLOPE TO DRAIN AS INDICATED.
- 02 4" CONCRETE SLAB ON 10 MIL VAPOR BARRIER ON COMPACTED, TERMITES TREATED FILL. SEE STRUCTURAL DRAWINGS.
- 03 DASHED LINE INDICATES SLAB TO BE POURED AT TIME OF TENANT BUILD OUT. POUR. INTERIOR TO REMAIN AS COMPACTED FILL.
- 04 0.050" PRE-FINISHED ALUMINUM COPING WITH WIND CLIPS AT 18" O.C. MAX. SEE DETAILS FOR MORE INFORMATION.
- 05 0.040" PRE-FINISHED ALUMINUM GUTTER. SEE DETAILS FOR MORE INFORMATION.
- 06 STRUCTURAL STEEL. SEE STRUCTURAL DRAWINGS, TYPICAL.
- 07 EXTERIOR PAVEMENT SHOWN FOR REFERENCE ONLY AND MAY NOT REFLECT ACTUAL DESIGN INTENT. SEE CIVIL DRAWINGS AND LANDSCAPE DRAWINGS FOR ACCURATE INFORMATION. GC TO COORDINATE EXACT CONDITION. PROVIDE ASPHALT BOARD EXPANSION JOINT AT POURED IN PLACE PAVEMENT. RUN STUCCO TO 1" BELOW GRADE WHERE PAVEMENT / PAVERS ARE NOT PROVIDED.
- 08 6"x6" 0.040" PRE-FINISHED ALUMINUM DOWNSPOUT
- 09 STUCCO WITH SAND FINISH, PRIME & PAINT. TYPICAL AT ROOF SIDE OF HIGHER PARAPETS.
- 10 SURFACE MOUNTED WALL SCONES. SEE ELEVATIONS AND SECTIONS, TYPICAL. (SEE ELECTRICAL DRAWINGS)
- 11 3/4" STUCCO ON GALV. P.B. MTL. LATH ON 15# FELT ON 8" CMU
- 12 \*FOAM-IN" INSULATION (R-6 APPROXIMATE VALUE)
- 13 TPO ROOFING SYSTEM, RUN UP WALL TO FLASHING OR COPING AS INDICATED.
- 14 0.024" PRE-FINISHED ALUMINUM GRAVEL STOP (NOT USED THIS SHEET)
- 15 PT WOOD BLOCKING
- 16 STAINLESS STEEL TERMINATION BAR
- 17 TPO ROOFING BASE FLASHING
- 18 SEALANT
- 19 SEE STRUCTURAL DRAWINGS FOR CLIP ANGLES, LEDGERS, KNOCK-OUT BLOCKS, LINTELS, FILLED CELLS, ANCHORAGE AND REINFORCEMENT.
- 20 DASHED LINE AT INTERIOR OF EXTERIOR WALL DENOTES FUTURE 5/8" GWB ON 3/4" GALV. METAL STUD FURRING WITH 3/4" BATT INSULATION (R-11 NOMINAL) TO BE INSTALLED AS PART OF TENANT BUILD-OUT (N.I.C. FOR SHELL CONTRACT). TYPICAL
- 21 ASPHALT BOARD EXPANSION JOINT
- 22 ALUMINUM AND GLASS STOREFRONT SYSTEM
- 23 THRU WALL 8"x16" ROOF SCUPPER FORMED FROM 0.024" PRE-FINISHED ALUMINUM. CONNECT TO COLLECTION BOX FORMED FROM 0.063" PRE-FINISHED ALUMINUM. SEE DETAIL 5/A3.01 FOR MORE INFORMATION
- 25 "RODDED" DRIP
- 26 SILL FLASHING PER STOREFRONT MANUFACTURER'S REQUIREMENTS
- 27 FOUNDATION. SEE STRUCTURAL DRAWINGS
- 28 PRE-ENGINEERED CANOPY SYSTEM
- 29 NOT USED
- 30 NOT USED
- 31 NOT USED
- 32 3"x8" PRE-ENGINEERED ALUMINUM STRUCTURAL SUPPORT BRACE ASSEMBLY. PRIME & PAINT. SEE DETAIL 5/A3.11 AND STRUCTURAL DRAWINGS FOR MORE INFORMATION. TYPICAL

**KEY NOTES** (XX) REFERENCED BY THIS SYMBOL

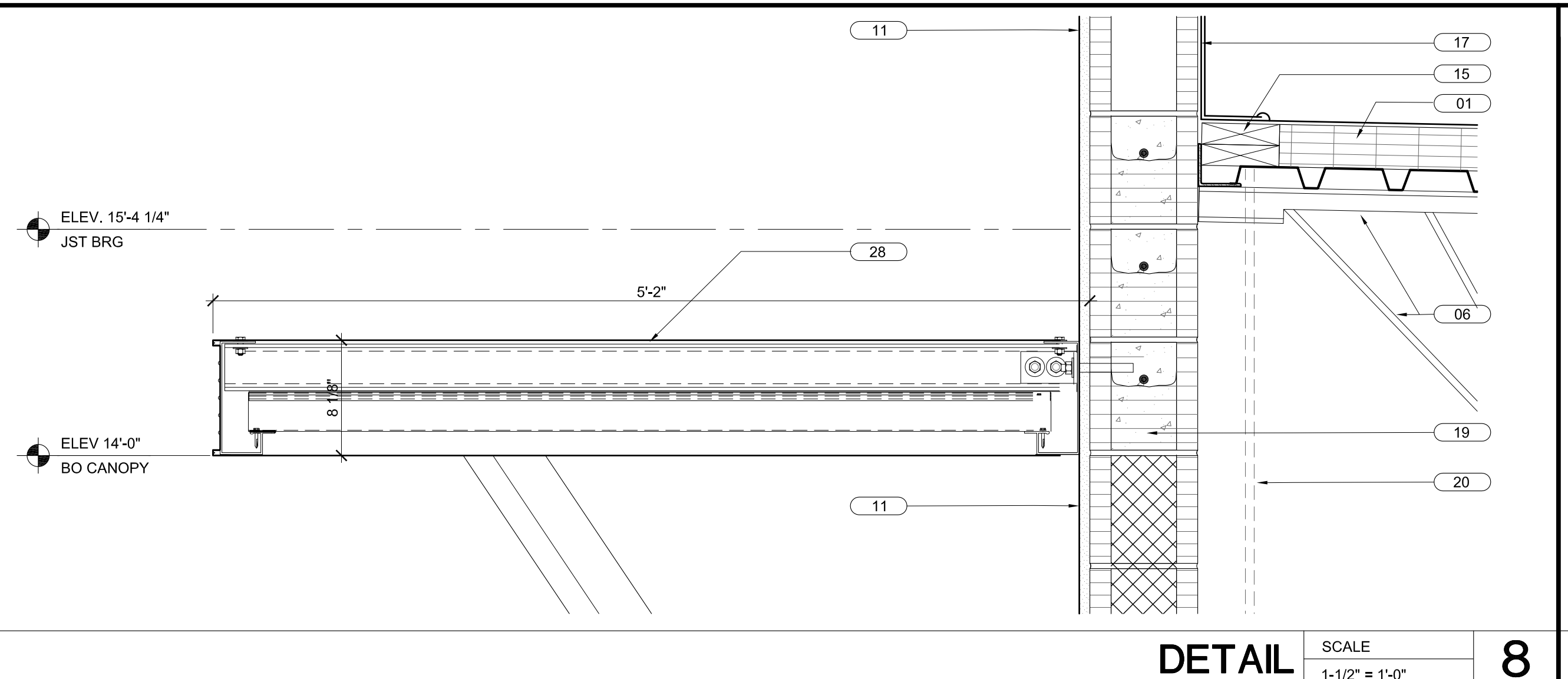


NOTE: SECURE STOREFRONT PER FLORIDA PRODUCT APPROVAL / MIAMI DADE NOA REQUIREMENTS

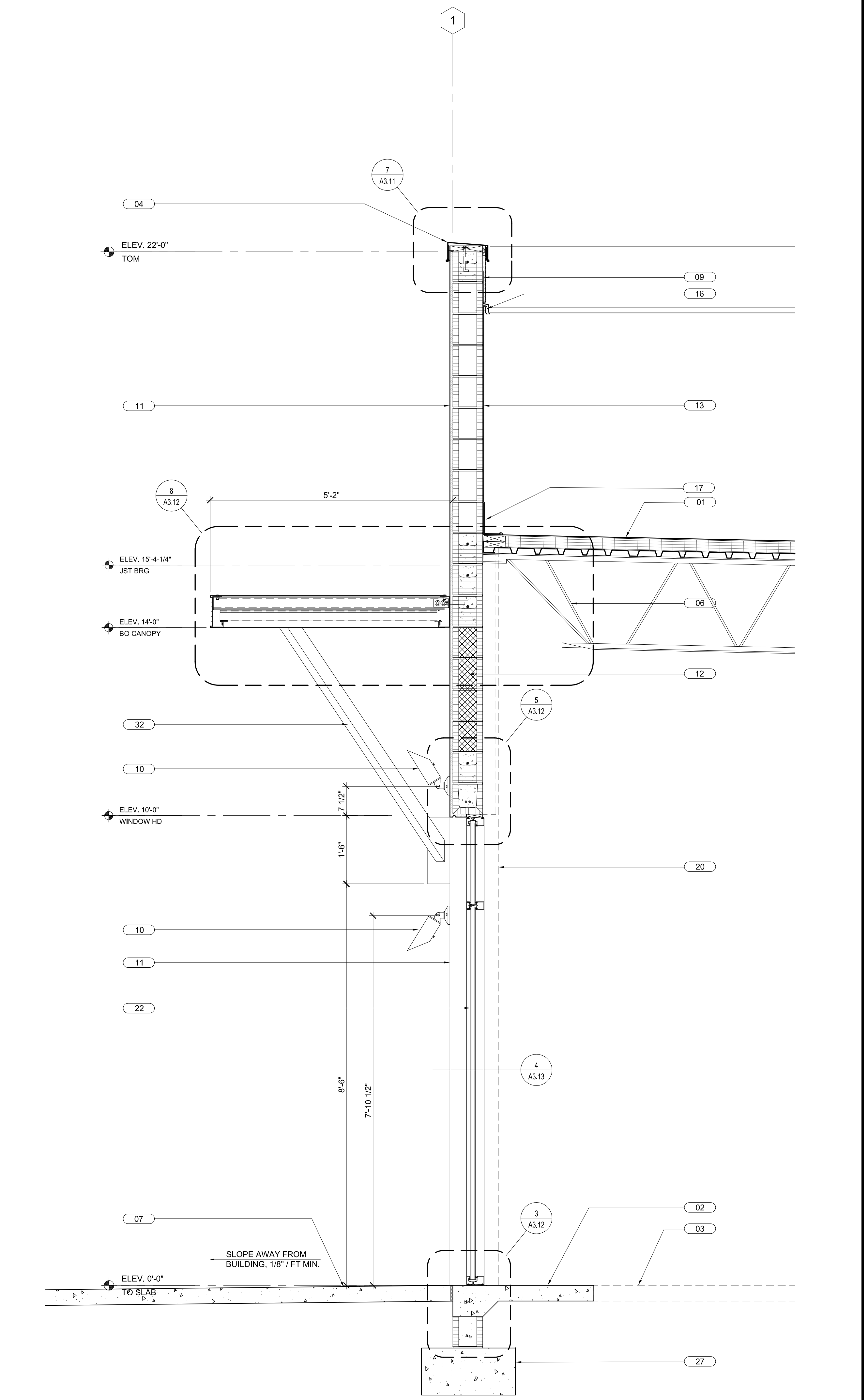
**HEAD DETAIL** SCALE 3" = 1'-0" **5**



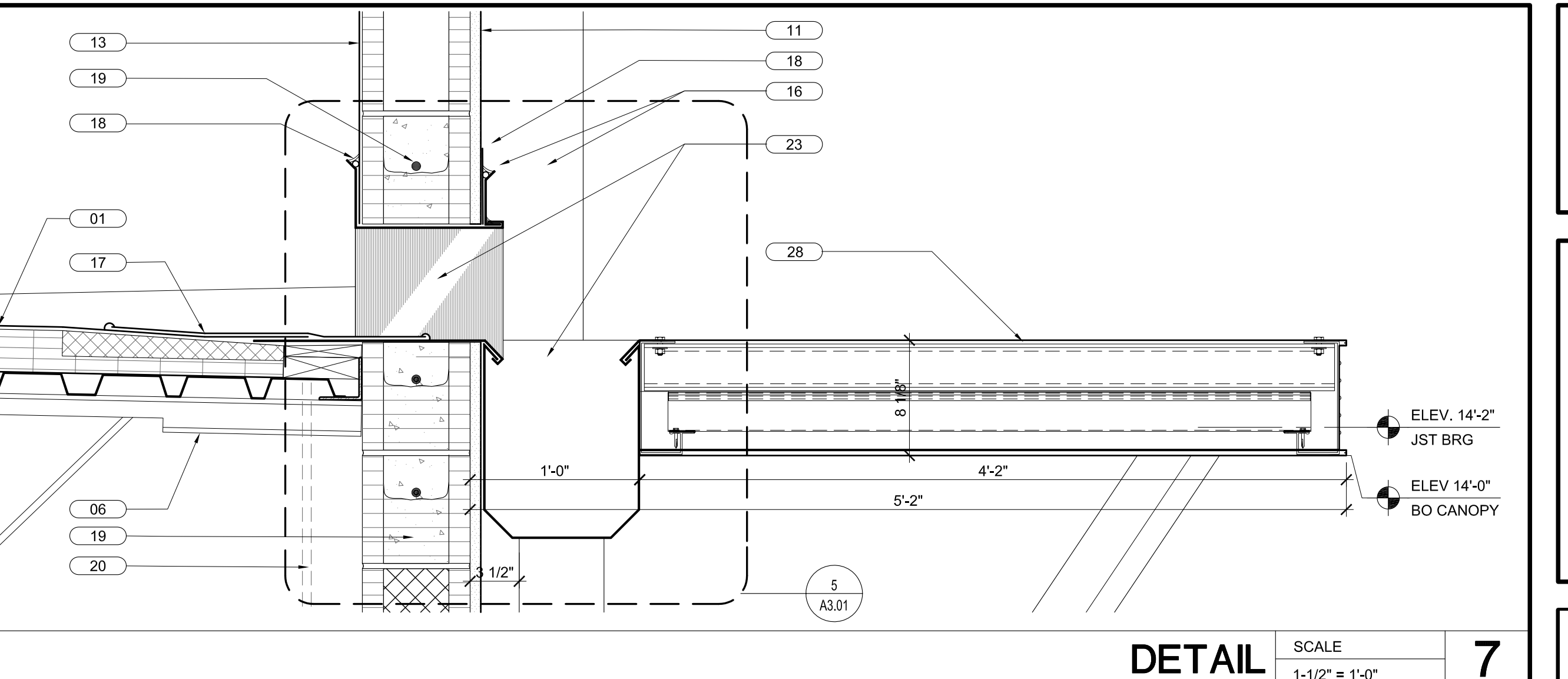
**SILL DETAIL** SCALE 3" = 1'-0" **3**



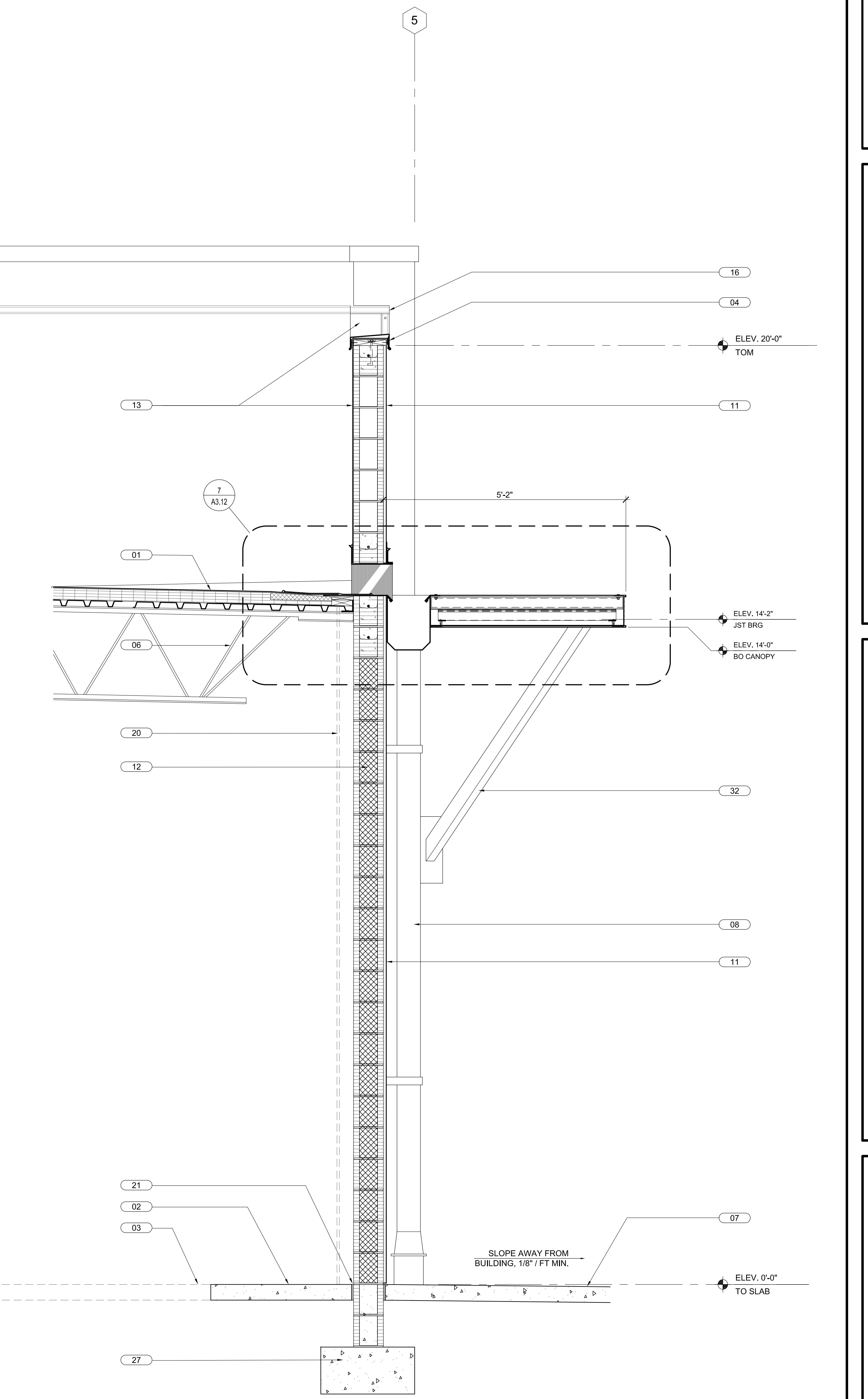
**DETAIL** SCALE 1-1/2" = 1'-0" **8**



**WALL SECTION** SCALE 3/4" = 1'-0" **2**



**DETAIL** SCALE 1-1/2" = 1'-0" **7**



**WALL SECTION** SCALE 3/4" = 1'-0" **1**

**api+**  
 2709 Rocky Point Dr. 201 T 813 + 281 9299  
 Tampa, Florida 33607 USA F 813 + 281 9292  
 License No AAC001935 [apiplus.com](http://apiplus.com)

BULLETIN LOG



**WESTLAKE AUXILIARY SALES CENTER**  
 CITY OF WESTLAKE  
 PALM BEACH COUNTY, FLORIDA

ISSUE DATE: - 09-30-16  
 ISSUED FOR:  
 PERMIT - BUILDING SHELL ONLY  
 © AS DATED ARCHITECTURE PLUS INTERNATIONAL, INC.

REVISION LOG

STATE REGISTRATIONS  
 FL #AAC001935 NC #8581  
 SC #6109 GA #10079  
 TN #00102675

Juan F. Romero AIA License No. AP0000793  
TO THE BEST OF THE ENGINEER'S KNOWLEDGE AND BELIEF, THE DESIGN AND CONSTRUCTION OF THE PROJECT SHALL BE IN ACCORDANCE WITH THE APPLICABLE MINIMUM SAFETY STANDARDS.

**WESTLAKE AUXILIARY SALES CENTER**  
 PROJECT NAME  
**WALL SECTIONS / DETAILS**  
 SHEET NAME  
 PROJECT NUMBER: **2016.082**  
 DRAWN BY: **PC** CHECKED BY: **PC**  
 SCALE  
**A3.12**  
 SHEET NUMBER