

○  
○  
○  
○  
○  
○  
○  
○  
○

BULLETIN LOG



**WESTLAKE VISITOR CENTER**  
 CITY OF WESTLAKE  
 PALM BEACH COUNTY, FLORIDA

ISSUE DATE: - 09-30-16  
 ISSUED FOR:  
**PERMIT - BUILDING SHELL ONLY**  
 ©AS DATED ARCHITECTURE PLUS INTERNATIONAL, INC.

△  
△  
△  
△  
△  
△  
△

REVISION LOG

STATE REGISTRATIONS

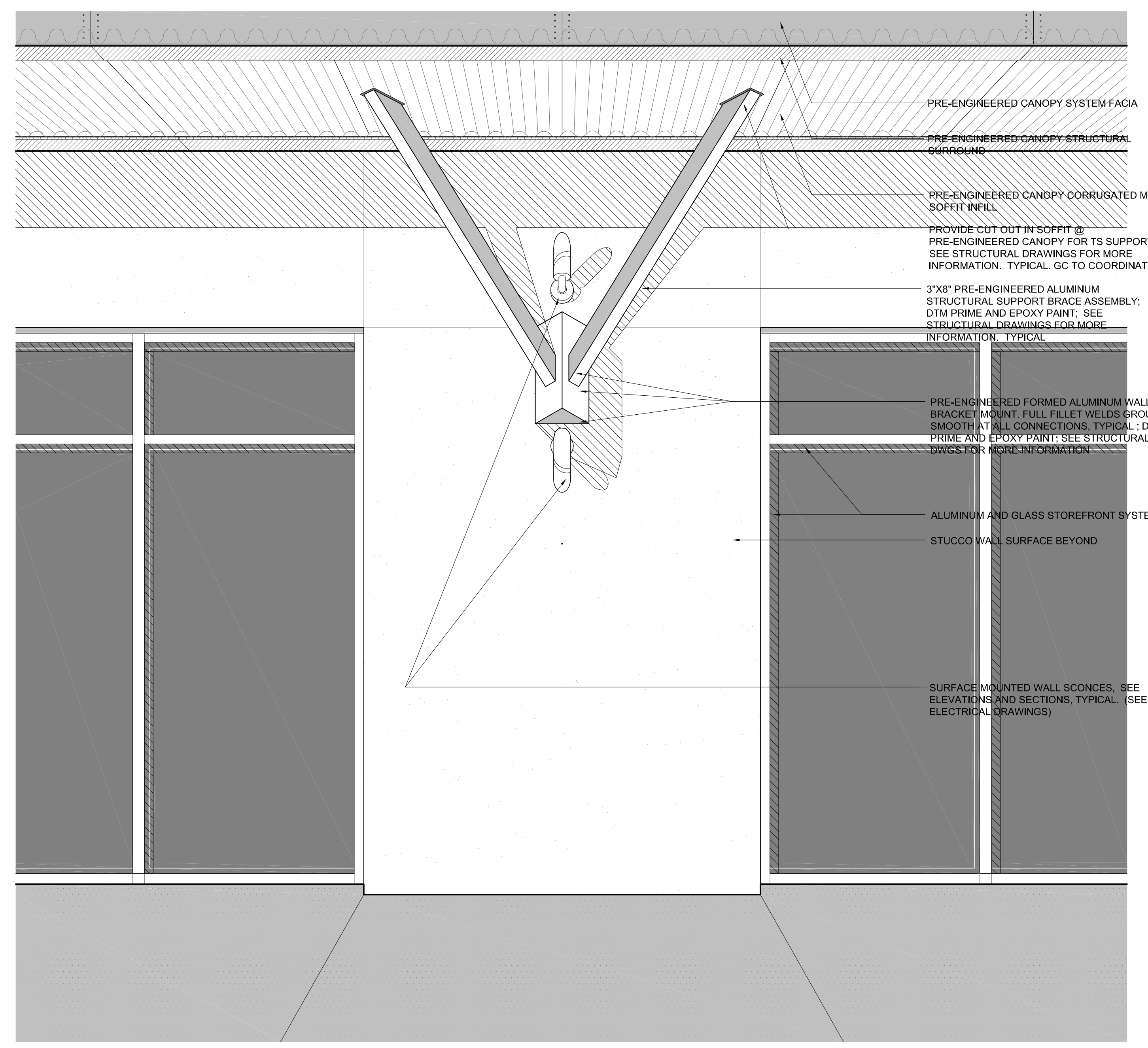
FL #AAC001935	NC #8581
SC #6109	GA #10079
TN #00102675	

Juan F. Romero AIA License No. AP00007793  
TO THE BEST OF THE KNOWLEDGE OF THE ARCHITECT AND ENGINEER, SAID PLANS AND SPECIFICATIONS COMPLY WITH THE APPLICABLE MINIMUM BUILDING CODES AND THE APPLICABLE MINIMUM SAFETY STANDARDS.

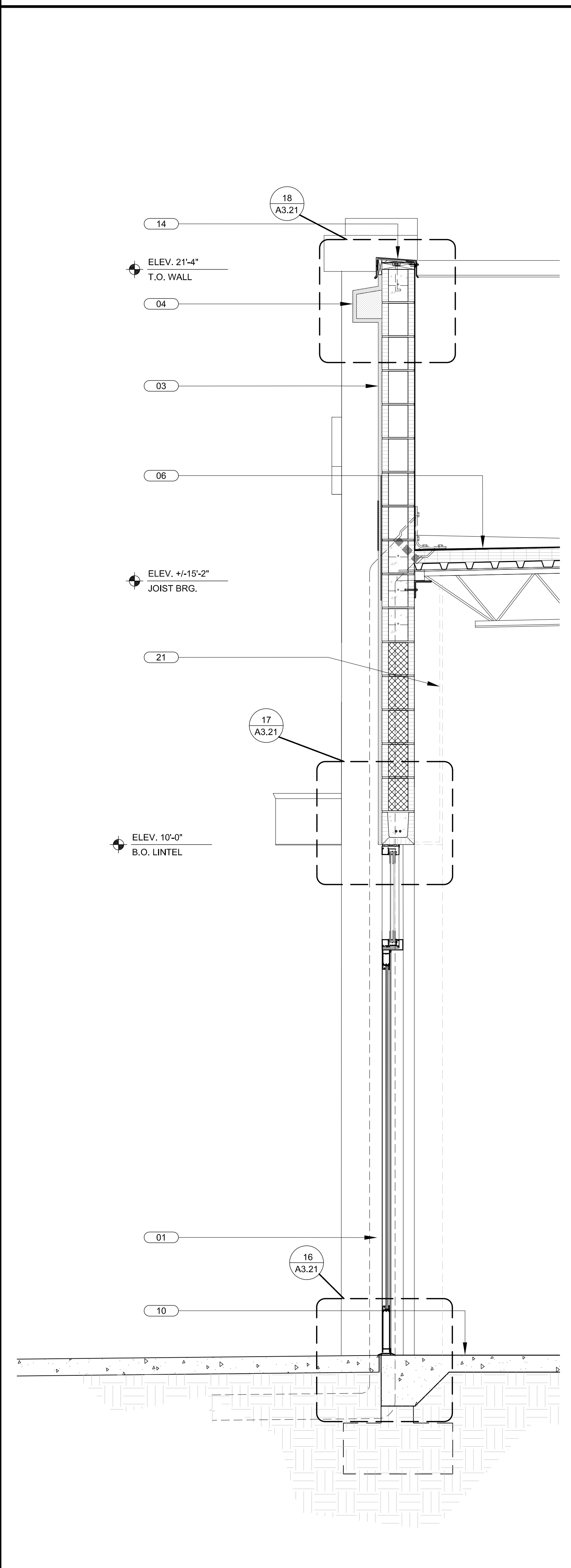
**WESTLAKE VISITOR CENTER**  
 PROJECT NAME  
**WALL SECTIONS**  
 SHEET NAME  
 PROJECT NUMBER: **2016.037**  
 DRAWN BY: **DF/CV** CHECKED BY: **TM/PC**  
 SCALE  
**A3.13**  
 SHEET NUMBER

- KEYED NOTES**
- |  |   |   |
|--|---|---|
| 01 CURTAIN WALL GLAZING SYSTEM BY "KAWNEER" OR EQUAL.                                      | 09 METAL STUD JOIST FRAMING-SEE STRUCT. DWGS  | 17 PRE-ENGINEERED GALV. PAINTED MTL. CANOPY (BY OTHERS)   |
| 02 10" KAWNEER VERSOLEIL LOUVERS ATTACHED TO PRIMED/PAINTED 4X4 GALV. STEEL POSTS, TYPICAL | 10 SCHED. FLOOR FINISH ON REINF. CONC. SLAB-SEE STRUCT. DWGS                        | 18 SURFACE MOUNTED WALL SCONCE. PROVIDE JBOX-SEE ELEVATIONS AND SECTIONS, TYPICAL (SEE ELECTRICAL DRAWINGS)   |
| 03 3/8" STUCCO ON GALV. P.B. MTL. LATH ON 15# FELT ON 8" CMU                               | 11 PAVERS / CONC. WALKWAY-SEE CIVIL DWGS  | 19 EXTERIOR LED SOFFIT LIGHT FIXTURE TYPICAL-SEE ELECTRICAL DRAWINGS  |
| 04 STUCCO ON FOAM TRIM ACCENT BAND   | 12 3/8" STUCCO ON GALV. P.B. MTL. LATH ON 15# FELT ON 1/2" DENSGLASS GOLD SHEATHING | 20 SEE STRUCTURAL DRAWINGS FOR FOUNDATIONS, CUP ANGLES, LEDGERS, KNOCK-OUT BLOCKS, LINTELS, FILLED CELLS, ANCHORAGE AND REINFORCEMENT.  |
| 05 PVC DOWNSPOUT CONCEALED IN BUTTRESS. CONNECT TO STORM DRAIN SYSTEM-SEE CIVIL DWGS       | 13 STUCCO BUTTRESS BEYOND   | 21 DASHED LINE AT INTERIOR OF EXTERIOR WALL DENOTES FUTURE 5/8" GWB ON 6" GALV. METAL STUD FLOORING WITH 5-1/2" BATT INSULATION (R-19 NOMINAL) TO BE INSTALLED AS PART OF TENANT BUILD-OUT (N.I.C. FOR SHELL CONTRACT), TYPICAL |
| 06 TPO ROOFING SYSTEM ON TAPERED INSULATION ON GALV. MTL. DECK                             | 14 PRE-MFG'RD ANOD. ALUMINUM COPING CAP W/ P.T. NAILER                              | 22 3"x8" PRE-ENGINEERED ALUMINUM STRUCTURAL SUPPORT BRACE ASSEMBLY, PRIME & PAINT. SEE DETAIL 3/A3.13 & STRUCTURAL DRAWINGS FOR MORE INFORMATION, TYPICAL.  |
| 07 STRUCTURAL BEAM-SEE STRUCT. DWGS  | 15 PRE-ENGINEERED STEEL ROOF TRUSS-SEE STRUCTURAL DRAWINGS                          | 23 SIGNAGE (BY OTHERS) PROVIDE JBOX-SEE ELECTRICAL DRAWINGS.  |
| 08 CORBEL LEADING EDGE OF MASONRY BUTTRESS & FORM GROUT AS SHOWN                           | 16 0.040" PRE-FINISHED ALUMINUM GUTTER. SEE DETAILS FOR MORE INFORMATION.           |   |

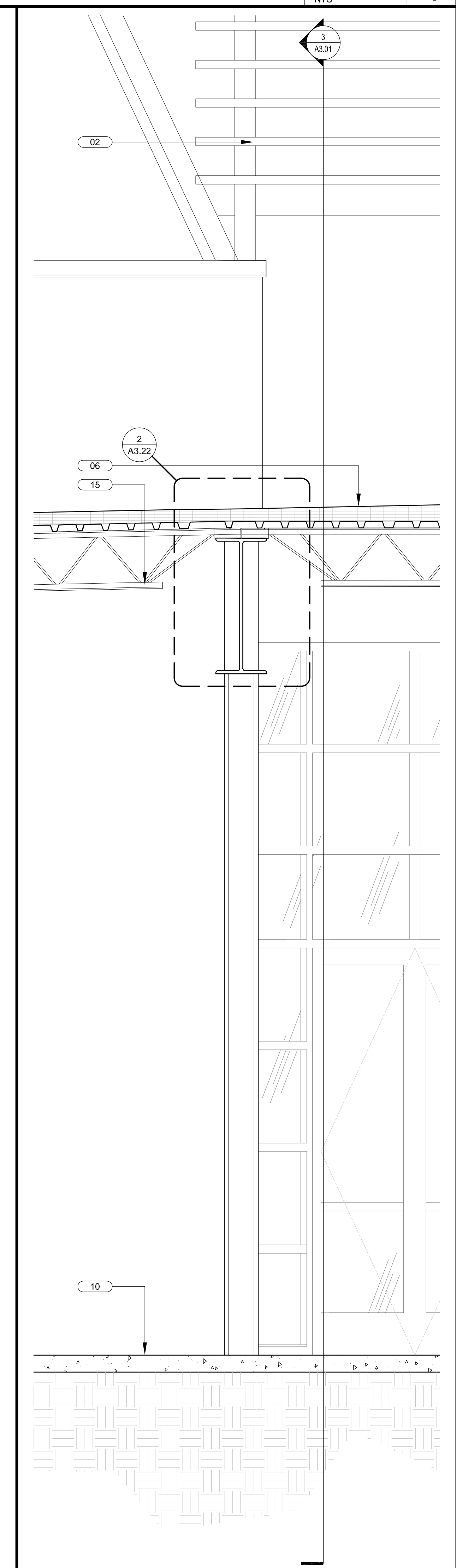
**KEY NOTES** SCALE NTS **4**



**PERSPECTIVE ELEVATION DETAIL** SCALE NTS **3**



**WALL SECTION** SCALE 3/4" = 1'-0" **2**



**WALL SECTION** SCALE 3/4" = 1'-0" **1**