

○
○
○
○
○
○
○
○

BULLETIN LOG



WESTLAKE VISITOR CENTER
 CITY OF WESTLAKE
 PALM BEACH COUNTY, FLORIDA

ISSUE DATE: - 09-30-16
 ISSUED FOR:
 PERMIT - BUILDING SHELL ONLY
 © AS DATED ARCHITECTURE PLUS INTERNATIONAL, INC.

△
△
△
△
△
△
△
△

REVISION LOG

NO.	DATE	DESCRIPTION

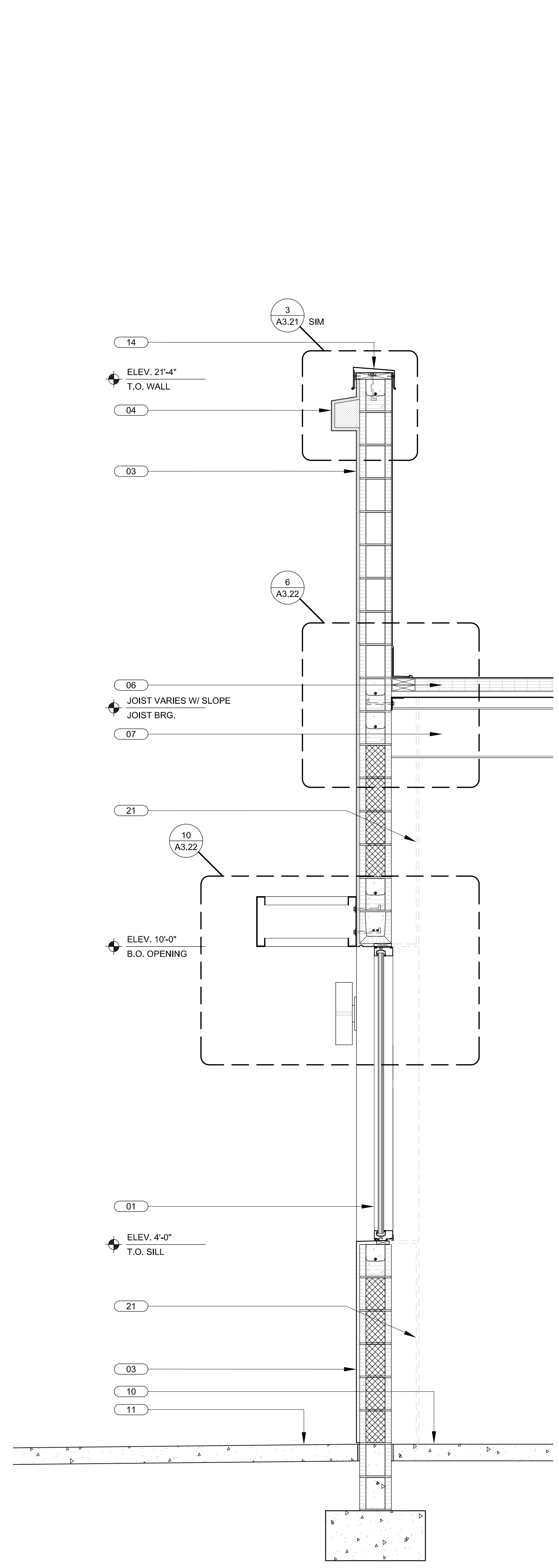
STATE REGISTRATIONS

FL #AAC001935	NC #8581
SC #6109	GA #10079
TN #00102675	

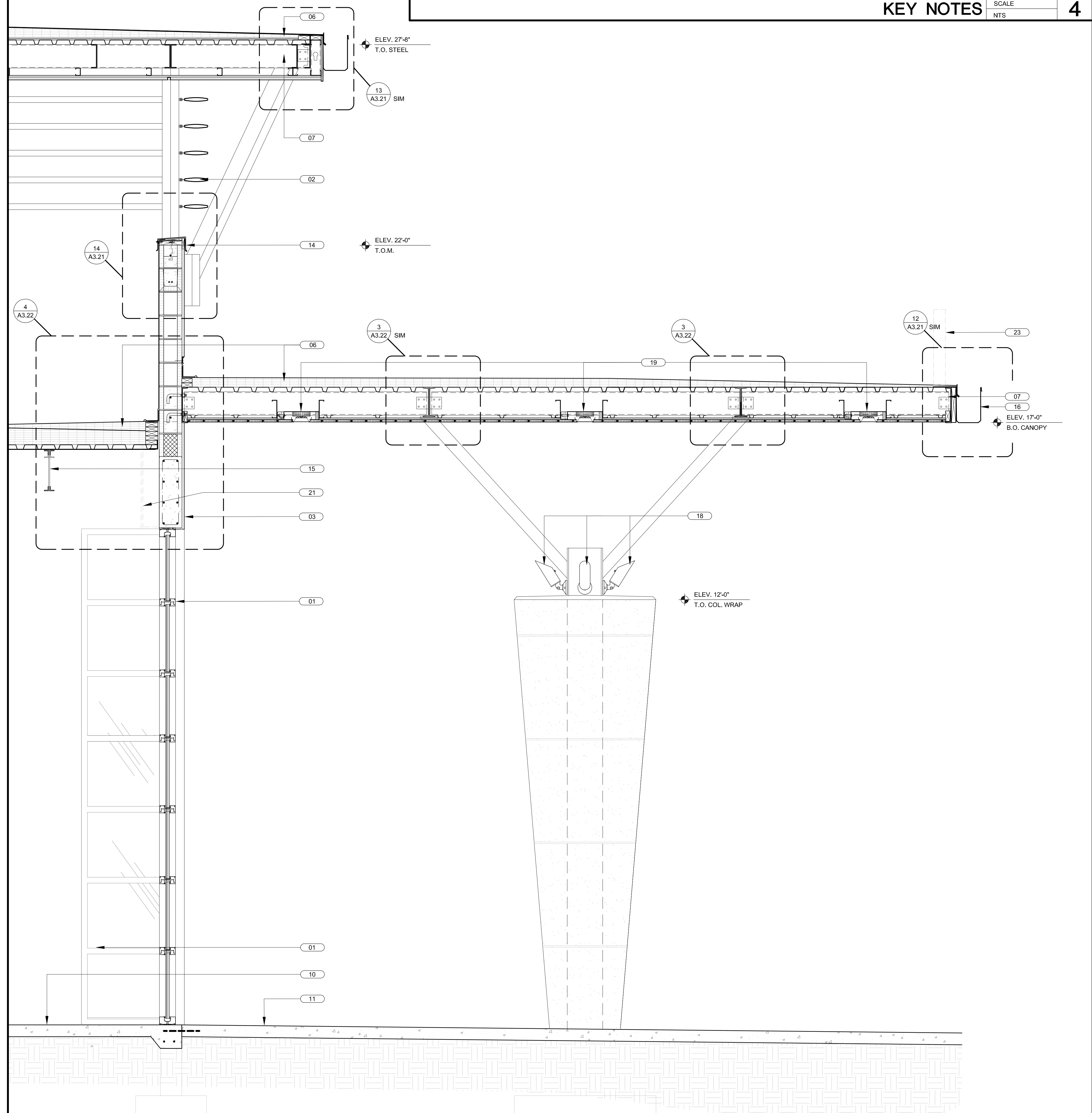
Jan F. Romero AIA License No. AP0007793
TO THE BEST OF HIS KNOWLEDGE AND BELIEF, THE ARCHITECT HAS EXERCISED REASONABLE CARE AND SKILL IN THE PREPARATION OF THESE ARCHITECTURAL DRAWINGS AND ASSURES THAT THEY ACCURATELY REPRESENT THE DESIGN INTENT.

WESTLAKE VISITOR CENTER
 PROJECT NAME
WALL SECTIONS
 SHEET NAME
 PROJECT NUMBER: **2016.037**
 DRAWN BY: **DF/CV** CHECKED BY: **TM/PC**
 SCALE
A3.14
 SHEET NUMBER

- KEY NOTES** SCALE NTS **4**
- | | | |
|--|---|--|
| 01 KEYED NOTES CURTAIN WALL GLAZING SYSTEM BY 'KAWNEER' OR EQUAL | 09 METAL STUD JOIST FRAMING-SEE STRUC'L DWG'S | 17 PRE-ENGINEERED GALV. PAINTED MTL. CANOPY (BY OTHERS) |
| 02 10" KAWNEER VERSOLEIL LOUVERS ATTACHED TO PRIMED/PAINTED 4X4 GALV. STEEL POSTS, TYPICAL | 10 SCHED. FLOOR FINISH ON REINF. CONC. SLAB-SEE STRUC'L DWG'S | 18 SURFACE MOUNTED WALL SCONCE PROVIDE BOX-SEE ELEVATIONS AND SECTIONS, TYPICAL (SEE ELECTRICAL DRAWINGS) |
| 03 3/8" STUCCO ON GALV. P.B. MTL. LATH ON 15# FELT ON 8" CMU | 11 PAVERS / CONC. WALKWAY-SEE CIVIL DWG'S | 19 EXTERIOR LED SOFFIT LIGHT FIXTURE TYPICAL-SEE ELECTRICAL DRAWINGS |
| 04 STUCCO ON FOAM TRIM ACCENT BAND | 12 3/8" STUCCO ON GALV. P.B. MTL. LATH ON 15# FELT ON 1" DENSGLASS GOLD SHEATHING | 20 SEE STRUCTURAL DRAWINGS FOR FOUNDATIONS, CLIP ANGLES, LEDGERS, KNOCKOUT BLOCKS, LINTELS, FILLED CELLS, ANCHORAGE AND REINFORCEMENT. |
| 05 PVC DOWNSPOUT CONCEALED IN BUTTRESS. CONNECT TO STORM DRAIN SYSTEM-SEE CIVIL DWG'S | 13 STUCCO BUTTRESS BEYOND | 21 DASHED LINE AT INTERIOR OF EXTERIOR WALL DENOTES FUTURE 5/8" GWB ON 6" GALV. METAL STUD FURRING WITH 5-1/2" BATT INSULATION (R-19 NOMINAL) TO BE INSTALLED AS PART OF TENANT BUILD-OUT (N.I.C. FOR SHELL CONTRACT), TYPICAL |
| 06 TPO ROOFING SYSTEM ON TAPERED INSULATION ON GALV. MTL. DECK | 14 PRE-MFG'D ANOD. ALUMINUM COPING CAP W/ P.T. NAILER | 22 3"x8" PRE-ENGINEERED ALUMINUM STRUCTURAL SUPPORT BRACE ASSEMBLY, PRIME & PAINT. SEE DETAIL 3/A3.13 & STRUCTURAL DRAWINGS FOR MORE INFORMATION. |
| 07 STRUCTURAL BEAM-SEE STRUC'L DWG'S | 15 PRE-ENGINEERED STEEL ROOF TRUSS-SEE STRUCTURAL DRAWINGS | 23 SIGNAGE (BY OTHERS) PROVIDE J-BOX-SEE ELECTRICAL DRAWINGS. |
| 08 CORBEL LEADING EDGE OF MASONRY BUTTRESS & FORM GROUT AS SHOWN | 16 0.040" PRE-FINISHED ALUMINUM GUTTER. SEE DETAILS FOR MORE INFORMATION. | |



WALL SECTION SCALE 3/4" = 1'-0" **2**



WALL SECTION SCALE 3/4" = 1'-0" **1**